

Timberland Subdivision DOWRoutine52620

by Campbell, Zachary (EEC)

Date: 5-26-2020

Timberland WWTP and Lift Station



Housekeeping improvements
should be made.




Lift station



Timberland WWTP



A photograph showing a large, cylindrical metal tank with a rusted, teal-colored surface. At the base of the tank, there is a significant pile of debris and trash, including several concrete blocks, pieces of white plastic, and long, rusted metal rods. The surrounding area is overgrown with dry grass and some green plants. A white text box is overlaid on the image, containing the text: "Housekeeping improvements should be made."

Housekeeping improvements should be made.











Leak in side of package plant
should be repaired.









Lagoon that is used
for extra aeration.

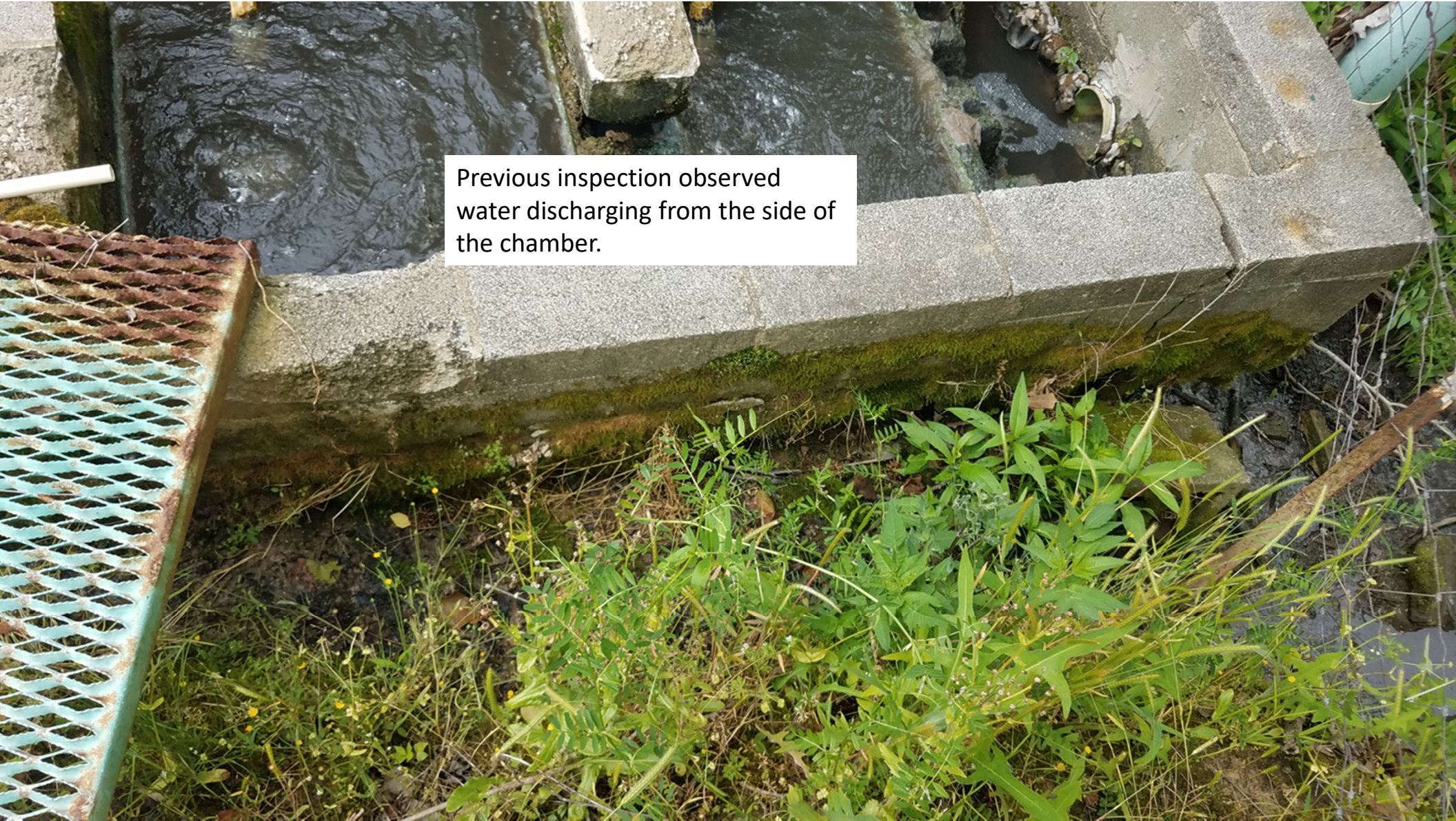





Creek surrounding lagoon with relatively clear water.

Disinfection chamber.





Previous inspection observed water discharging from the side of the chamber.

A photograph showing a concrete wall with a large, irregular hole. The wall is heavily covered in bright green algae or moss. Water is flowing through the hole, creating white foam and splashing. A piece of brown paper or debris is visible inside the hole. The water below is dark and turbulent.

Holes still present in disinfection chamber should be repaired to prevent future violations.



Outfall. Water effluent water is not very clear.