

Joint Application Exhibit 3
Mercer County Solar Facility
Maps, Conceptual Plans, Specifications, and Drawings

1 2 3 4 5 6 7 8 9 10 11 12 13 14 15 16



Scale For Microfitting
Millimeters
Inches

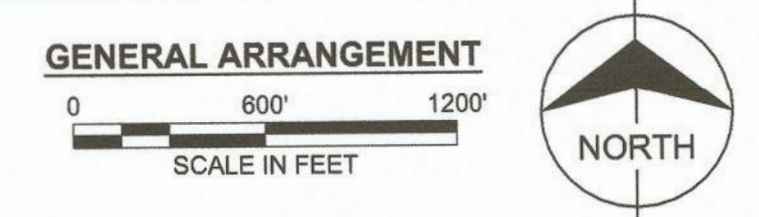
SYSTEM DESCRIPTION	
TOTAL CAPACITY @ POI (AC)	100.0 MW
SOLAR NAMEPLATE CAPACITY (AC)	122.4 MVA
SOLAR CAPACITY (DC)	126.4 MW
DC:AC RATIO	1.26
AC COLLECTION SYSTEM VOLTAGE	34.5 kV
DC SYSTEM VOLTAGE	1,500 V
TOTAL MODULES	229,812
MODULES PER STRING	33
AVERAGE STRINGS PER INVERTER	205
TOTAL INVERTERS	34

DESIGN PARAMETERS	
GROUND COVER RATIO	31%
RACKING	SINGLE AXIS TRACKER
ROW TO ROW SPACING	25.23'
BOUNDARY AREA	895 ACRES
SETBACKS	50' MIN. FROM SITE BOUNDARY 50' MIN. FROM STREAMS/WETLANDS 20' MIN. FROM RIGHTS-OF-WAY

MODULE PARAMETERS	
MANUFACTURER	TRINA
MODEL	TSM-DEG19C.20
BIN CLASS	550 W

INVERTER PARAMETERS	
MANUFACTURER	SUNGROW
MODEL	SG3600UD-MV
RATING	3,600 kVA

- NOTE:**
- THIS DRAWING IS CONCEPTUAL IN NATURE AND FOR PLANNING PURPOSES ONLY.
 - THIS DRAWING REPRESENTS ONE PROPOSED LAYOUT AND IS SUBJECT TO CHANGE BASED ON DETAILED DESIGN, AS WELL AS ACTUAL SITE CONDITIONS.
 - THIS DRAWING DOES NOT CONSIDER FEDERAL, STATE, OR OTHER LOCAL DEVELOPMENT REGULATION, WHICH MAY IMPACT THE PROPOSED LAYOUT.
 - THE PROPOSED LAYOUT IS BASED ON AERIAL IMAGE AND IS SUBJECT TO CHANGE BASED ON BOUNDARY SURVEY (ALTA).
 - THE SITE LAYOUT DOES NOT TAKE INTO CONSIDERATION THE FLOOD ZONE, TRANSMISSION EASEMENTS OR OTHER EASEMENTS.



PRELIMINARY - NOT FOR CONSTRUCTION



no.	date	by	ckd	description	no.	date	by	ckd	description
B	12/08/22	PSD	SH	ISSUED FOR REVIEW					
A	12/07/22	PSD	SH	ISSUED FOR REVIEW					

BURNS MCDONNELL
 9400 WARD PARKWAY
 KANSAS CITY, MO 64114
 816-333-9400
 Burns & McDonnell Engineering Co., Inc.
 Firm Reg. No. 43

designed: S. HIBBARD
 detailed: P. DURKEE

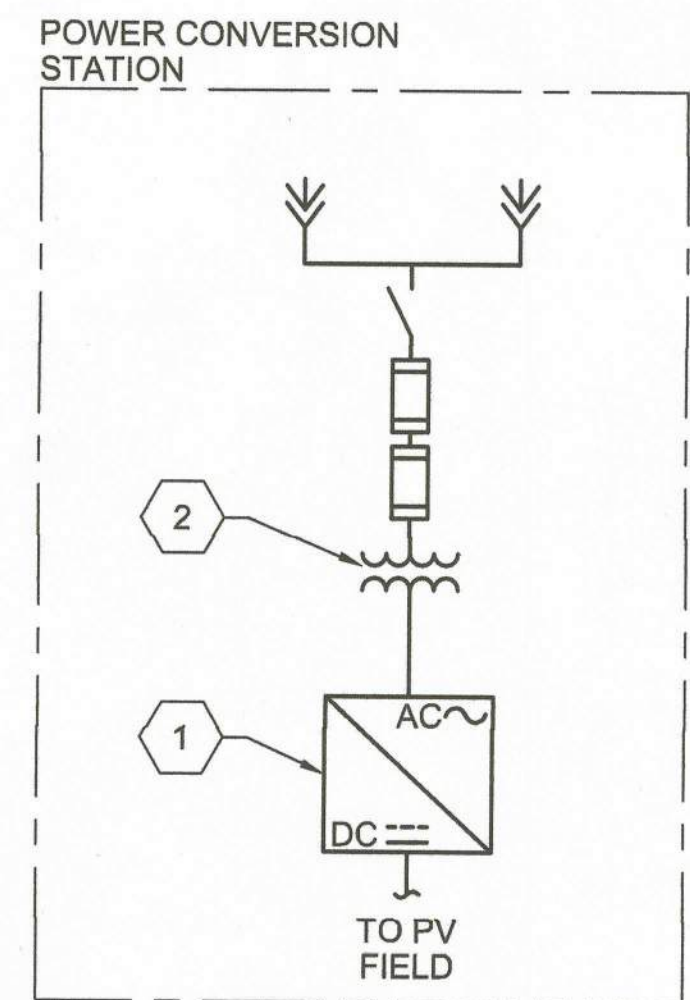
LC&E KU

MERCER COUNTY, KY

MERCER COUNTY SOLAR FACILITY GENERAL ARRANGEMENT	
project 145989	contract -
drawing EP100	rev. B
sheet - of - sheets	file 145989EP100.dwg

1 2 3 4 5 6 7 8 9 10 11 12 13 14 15 16

TO COLLECTOR SUBSTATION



TYPICAL 3,600 KVA INVERTER SKID
NOT TO SCALE

EQUIPMENT LIST		
NO.	QUANTITY	DESCRIPTION
1	34	SUNGROW SG3600UD
2	34	3,600 kVA, 34.5 kV:0.63 kV MV TRANSFORMER

SYSTEM DESCRIPTION	
TOTAL CAPACITY @ POI (AC)	100.0 MW
SOLAR NAMEPLATE CAPACITY (AC)	122.4 MVA
SOLAR CAPACITY (DC)	126.4 MW
DC:AC RATIO	1.26
AC COLLECTION SYSTEM VOLTAGE	34.5 kV
DC SYSTEM VOLTAGE	1,500 V
TOTAL MODULES	229,812
MODULES PER STRING	33
AVERAGE STRINGS PER INVERTER	205
INVERTER NAMEPLATE RATING	3,600 kVA
TOTAL INVERTERS	34

- NOTES:**
- THIS DRAWING REPRESENTS ONE PROPOSED ARRANGEMENT AND IS SUBJECT TO CHANGE BASED ON DETAILED DESIGN.
 - THIS DRAWING IS CONCEPTUAL IN NATURE AND IS FOR PLANNING PURPOSES ONLY.
 - TRANSFORMERS SHALL MEET THE INVERTER MANUFACTURER'S SPECIFICATIONS FOR MEDIUM VOLTAGE TRANSFORMERS.

- LEGEND**
- POWER TRANSFORMER
 - SURGE ARRESTOR
 - FUSE
 - DISCONNECT SWITCH
 - PV MODULE
 - 600 A ELBOW CONNECTOR
 - SOLAR PHOTOVOLTAIC INVERTER
 - RISER POLE/TRANSITION FROM UNDERGROUND TO OVERHEAD

PRELIMINARY - NOT FOR CONSTRUCTION

1 TYP



no.	date	by	ckd	description	no.	date	by	ckd	description
A	12/08/22	PSD	SH	ISSUED FOR REVIEW					

BURNS MCDONNELL
 9400 WARD PARKWAY
 KANSAS CITY, MO 64114
 816-333-9400
 Burns & McDonnell Engineering Co, Inc.
 Firm Reg. No. 43

designed: S. HIBBARD
 detailed: P. DURKEE



MERCER COUNTY, KY

MERCER COUNTY SOLAR FACILITY
 AC ONE LINE DIAGRAM

project: 145989 contract: -
 drawing: EE001 - rev. A
 sheet: - of - sheets
 file: 145989EE001.dwg

