

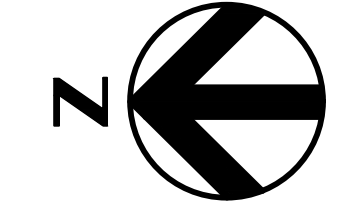
Joint Application Exhibit 1

Mill Creek NGCC

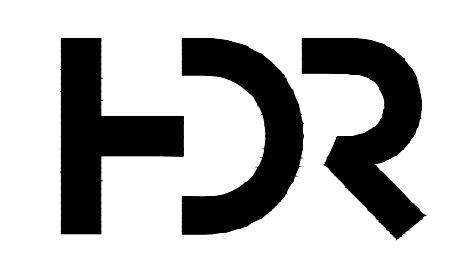
Maps, Conceptual Plans, Specifications, and Drawings

Revisions

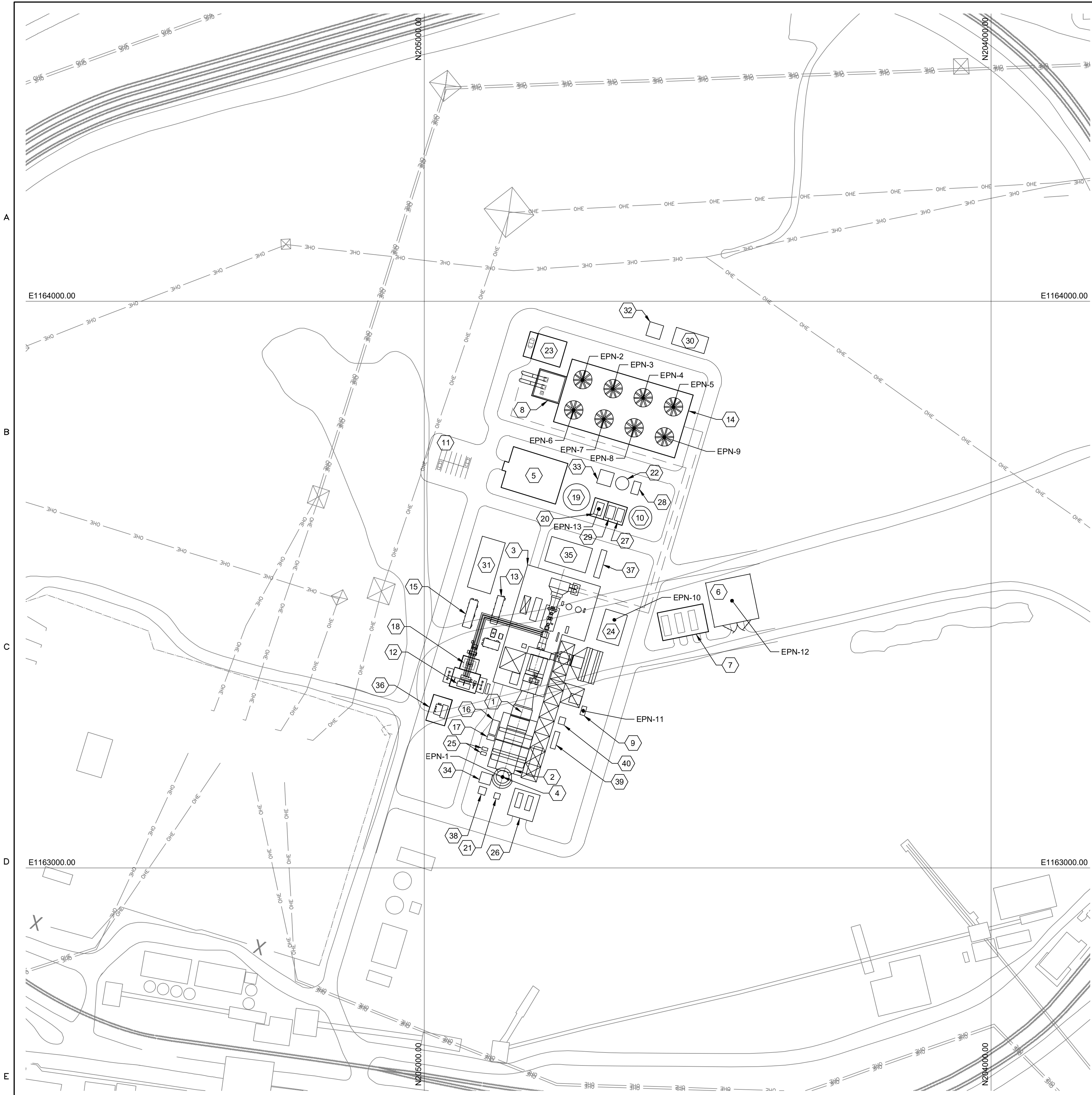
A	Project: 10358480	12/09/2022
INITIAL ISSUE		
Dwn:	EDC	12/09/2022
Chkd:	MAW	12/09/2022
Appd:		
B	Project: 10358480	12/09/2022
ISSUED FOR CPCN		
Dwn:	EDC	12/09/2022
Chkd:	J.C	12/09/2022
Appd:	MAW	12/09/2022



SITE PLAN
SCALE: 1" = 300'-0"



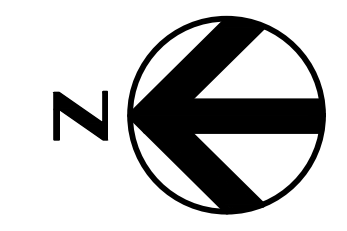
Location and Unit: MILL CREEK	Contract No. 10358480	Drawn: ZAP
Scale: 1" = 300'-0"	Engineering discipline: CIVIL	Checked: J.C
Drawing type: PLAN	PPL companies: LG&E KU	Approved: MAW
Title: COMBINED CYCLE GENERATION PROGRAM MILL CREEK UNIT 5 SITE PLAN		
Originator: HDR ENGINEERING, INC	Job or Project No. 10358480	Released for: CPCN
Job or Project No. 10358480	Drawing No. 5GA-C1000	Alternate Drawing No. C1000
8		Rev. B



EMISSION POINT LOCATION PLAN
SCALE: 1" = 100'-0"

EMISSION POINTS				
EMISSION POINT NUMBER (EPN)	NAME	SPCS NAD83 (FEET)	UTM ZONE 16S (METERS)	HEIGHT ABOVE GRADE (FEET)
1	HRSG STACK	N204861.86 E1163160.65	N4212011 E595858	185
2	COOLING TOWER CELL 1	N204720.72 E1163861.54	N4211974 E596073	55
3	COOLING TOWER CELL 2	N204667.35 E1163845.59	N4211957 E596068	55
4	COOLING TOWER CELL 3	N204613.98 E1163829.65	N4211941 E596064	55
5	COOLING TOWER CELL 4	N204560.61 E1163813.70	N4211925 E596059	55
6	COOLING TOWER CELL 5	N204736.67 E1163808.18	N4211978 E596056	55
7	COOLING TOWER CELL 6	N204683.30 E1163792.23	N4211962 E596052	55
8	COOLING TOWER CELL 7	N204629.93 E1163776.28	N4211945 E596047	55
9	COOLING TOWER CELL 8	N204576.56 E1163760.33	N4211929 E596043	55
10	AUXILIARY BOILER	N204664.64 E1163437.98	N4211953 E595944	60
11	EMERGENCY DIESEL GENERATOR	N204719.34 E1163277.48	N4211968 E595895	16
12	FUEL GAS HEATER	N204456.89 E1163471.79	N4211890 E595956	18
13	DIESEL FIRE PUMP	N204691.91 E1163633.61	N4211963 E596003	13

ALL COORDINATES ARE BASED ON NAD83 KENTUCKY STATE PLANE NORTH ZONE 1601, US SURVEY FEET. ALL ELEVATIONS ARE BASED ON NAVD88 VERTICAL DATUM.



FACILITY LEGEND:

- 1 GAS TURBINE (GT)
- 2 HEAT RECOVERY STEAM GENERATOR (HRSG)
- 3 STEAM TURBINE BUILDING
- 4 HRSG STACK
- 5 ADMINISTRATION / CONTROL BUILDING
- 6 GAS YARD
- 7 GAS COMPRESSOR BUILDING
- 8 CIRCULATING WATER PUMPS
- 9 EMERGENCY GENERATOR
- 10 DEMIN WATER STORAGE TANK
- 11 PLANT PARKING
- 12 GSU TRANSFORMER
- 13 BATTERY ENCLOSURE
- 14 COOLING TOWER
- 15 EXCITATION / STATIC START ENCLOSURE
- 16 AMMONIA FLOW CONTROL
- 17 DUCT BURNER SKID
- 18 UNIT AUX TRANSFORMERS
- 19 SERVICE / FIRE WATER STORAGE TANK
- 20 FIRE PROTECTION PUMP HOUSE
- 21 CEMS SHELTER
- 22 WASTE WATER TANK
- 23 CIRCULATING WATER CHEMICAL FEED BUILDING
- 24 AUXILIARY BOILER BUILDING
- 25 HRSG RECIRCULATION PUMPS
- 26 BOILER FEED PUMP / ELECTRICAL BUILDING
- 27 DEMIN FORWARDING PUMPS
- 28 WASTE WATER PUMP SKID
- 29 SERVICE WATER PUMP SKID
- 30 AMMONIA UNLOADING / STORAGE / FORWARDING
- 31 SINGLE SHAFT PECC
- 32 CO2 BULK STORAGE TANK
- 33 NITROGEN STORAGE TANK
- 34 HRSG BLOWDOWN TANK / PIT
- 35 MEDIUM VOLTAGE PDC
- 36 SPARE GSU TRANSFORMER
- 37 OIL / WATER SEPARATOR
- 38 HRSG BLOWDOWN SUMP
- 39 SAMPLE PANEL
- 40 CYCLE CHEMICAL FEED

Revisions

A	Project: 10358480	12/09/2022
INITIAL ISSUE		
Dwn: EDC 12/09/2022 Chkd: MAW 12/09/2022 Appd:		
B	Project: 10358480	12/09/2022
ISSUED FOR CPCN		
Dwn: EDC 12/09/2022 Chkd: J C 12/09/2022 Appd: MAW 12/09/2022		



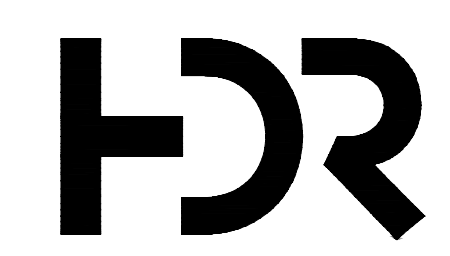
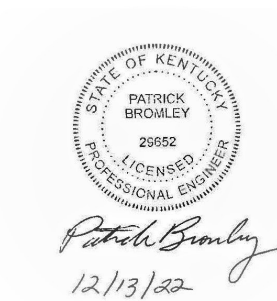
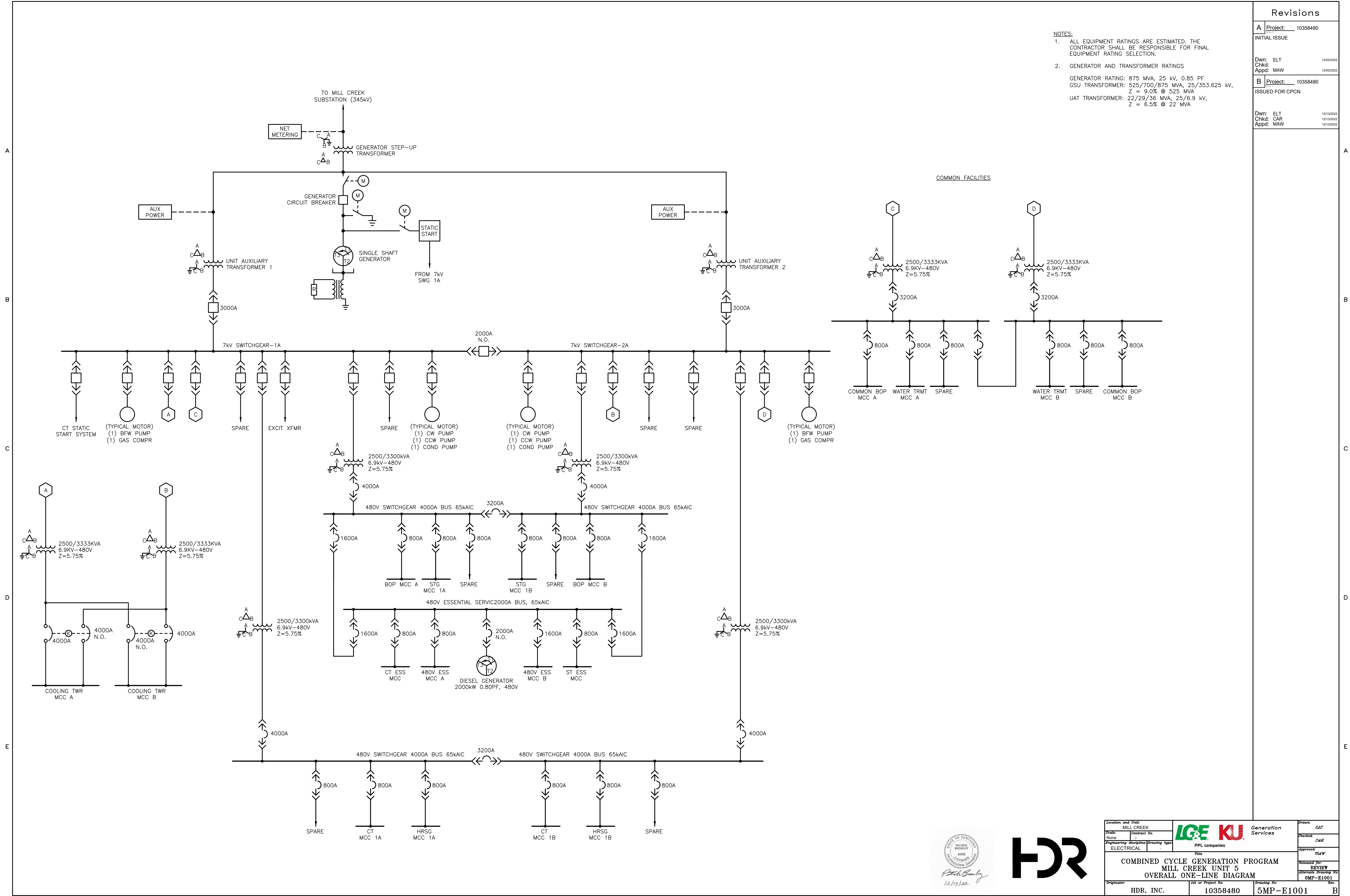
Location and Unit: MILL CREEK	Contract No. 12092022	Drawn: ZAP
Scale: 1" = 100'-0"	Engineering discipline: CIVIL	Checked: J.P.
Drawing type: PLAN	PPL companies	Approved: MAW
COMBINED CYCLE GENERATION PROGRAM MILL CREEK UNIT 5 EMISSION POINT LOCATION PLAN		Released for: CPCN
Originator: HDR ENGINEERING, INC	Job or Project No. 10358480	Drawing No. 5GA-C1002

Revisions

A	Project: 10358480	Drawn: ELT	12/02/2022
	INITIAL ISSUE	Chkd: MAW	12/02/2022
B	Project: 10358480	Drawn: ELT	12/13/2022
	ISSUED FOR CPCN	Chkd: CAR	12/13/2022
		Appd: MAW	12/13/2022

NOTES:

- ALL EQUIPMENT RATINGS ARE ESTIMATED. THE CONTRACTOR SHALL BE RESPONSIBLE FOR FINAL EQUIPMENT RATING SELECTION.
- GENERATOR AND TRANSFORMER RATINGS
 GENERATOR RATING: 875 MVA, 25 kV, 0.85 PF
 GSU TRANSFORMER: 525/700/875 MVA, 25/353.625 kV, Z = 9.0% @ 525 MVA
 UAT TRANSFORMER: 22/29/36 MVA, 25/6.9 kV, Z = 6.5% @ 22 MVA



Location and Unit: MILL CREEK		Drawn: <i>ELT</i>
Scale: None		Checked: <i>CAR</i>
Engineering discipline: ELECTRICAL	PPL companies	Approved: <i>MAW</i>
Title: COMBINED CYCLE GENERATION PROGRAM MILL CREEK UNIT 5 OVERALL ONE-LINE DIAGRAM		
Originator: HDR, INC.	Job or Project No.: 10358480	Released For: REVIEW
	Drawing No.: 5MP-E1001	Alternate Drawing No.: OMP-E1001

