



# ***Texas Gas Transmission, LLC***

## ***Presentation for the Commonwealth of Kentucky Legislature***

February 2, 2023

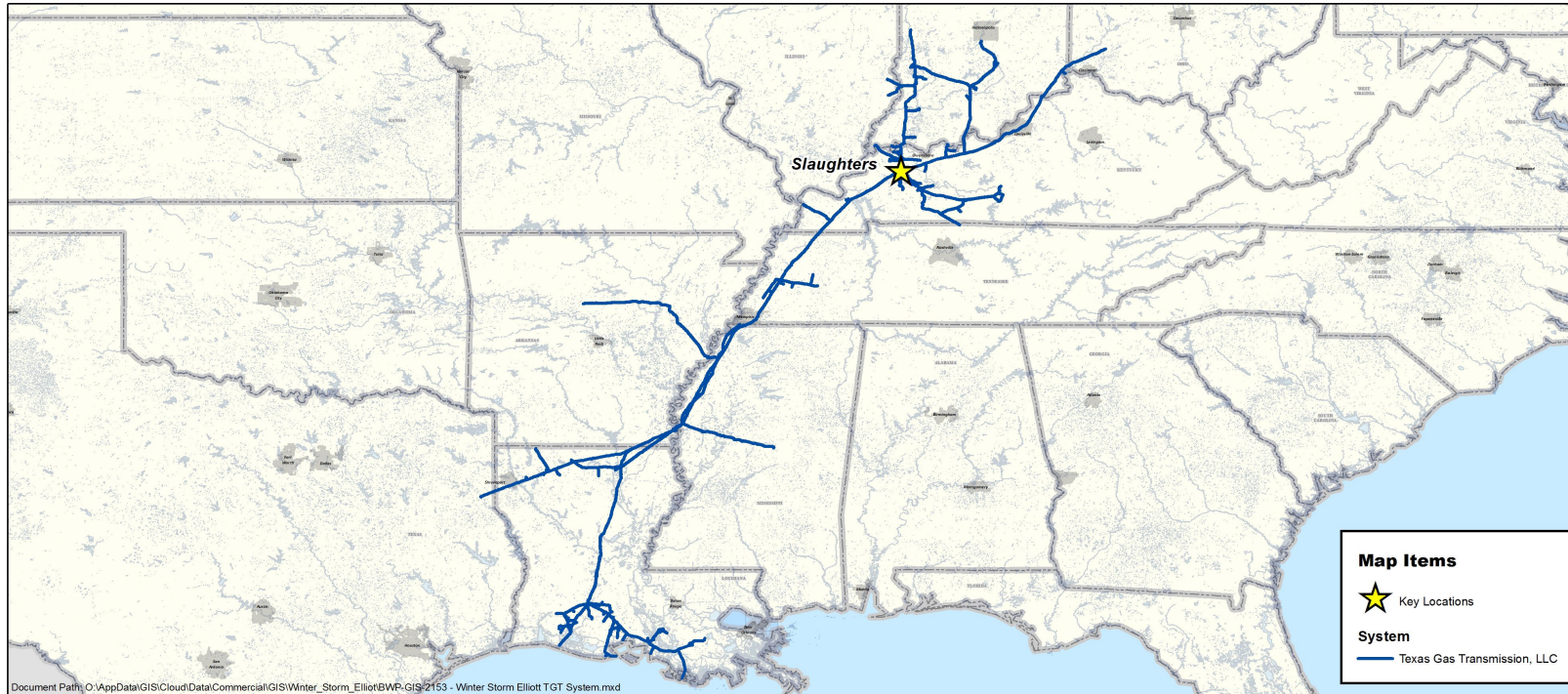


# Texas Gas Overview

- Major offices in Owensboro, KY and Houston, TX
- 303 employees in Kentucky
- Approximately 1200 employees system-wide and 200 employees in Owensboro
- Almost 1500 miles of pipelines in Kentucky
- Approximately 78 Billion cubic feet of natural gas storage capacity in Kentucky
- Texas Gas contributed over \$7.8 Million in ad valorem taxes to Kentucky in 2022



# System Map



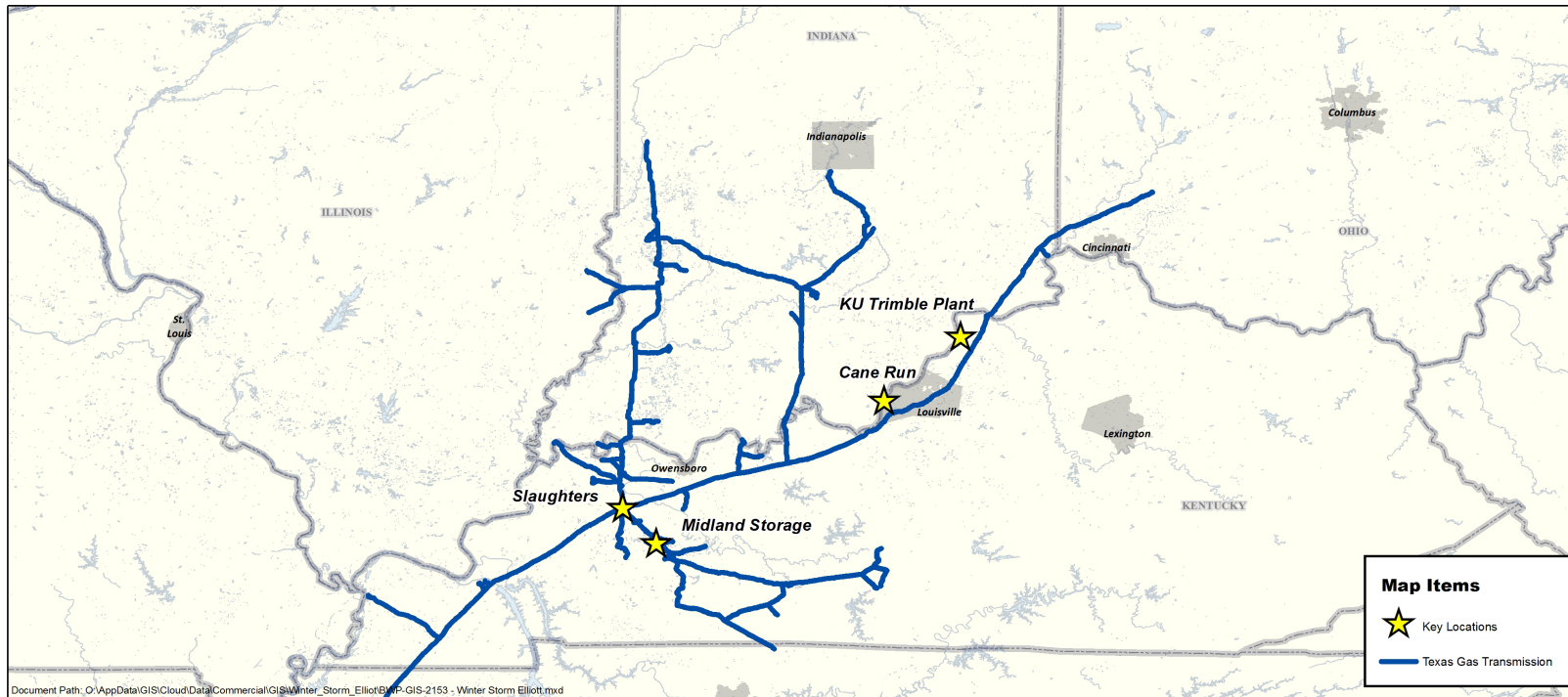


## Services Provided by Texas Gas

- Texas Gas performs its transportation services in accordance with customer's requests, on a daily basis, and is regulated by the Federal Energy Regulatory Commission
- Texas Gas Transmission is an open-access, interstate pipeline providing transportation and storage services for customers.
  - Services for customers
    - Transporting and storing customer gas
    - Customers choose type of service
      - Firm or Interruptible Transportation
      - Firm or Interruptible Storage
      - No Notice Service



# Kentucky and Indiana

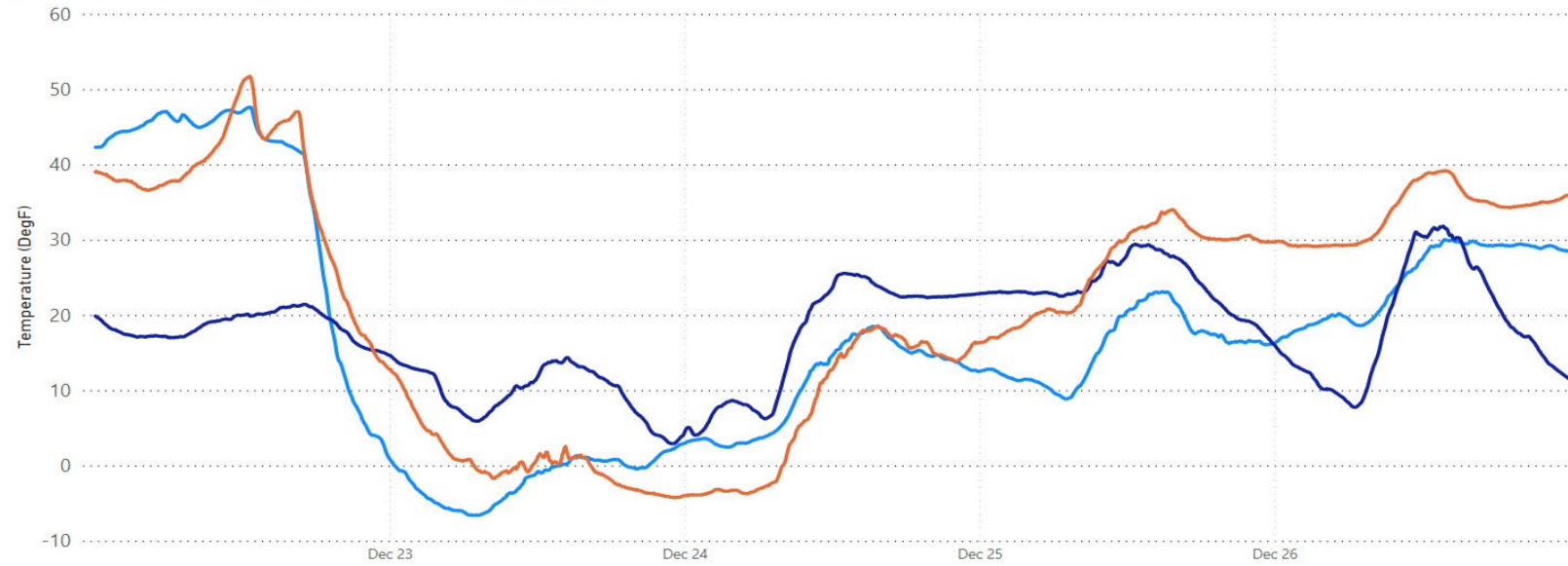




# System Performance

Hardinsburg Compressor Station Ambient Temperature

● December 2022 Winter Storm Elliot ● February 2021 Winter Storm Uri ● January 2014 Polar Vortex



Day 1 – Day 5 of each storm - normalized to Dec 2022 Winter Storm Elliot



# Preparation and What Happened

- **Steps taken in advance of the storm**
  - Winterized critical equipment
  - Added natural gas and pressure to the north end of the system
  - Manned key compression stations/locations
- **What happened during the storm**
  - On the morning of December 23, 2022, TXG Gas Control Center requested to start horsepower at Slaughters Station
  - Control unit on a valve failed due to icing
    - This affected our ability to deliver gas to KU's electric generation plants at contractual pressures, which limited their ability to bring on all of their generation.
    - This component failure did not prevent Texas Gas' ability to source 1.62 Billion cubic feet per day of storage capacity from storage fields in KY and IN to replace lost supply.



## Steps We Have Taken

- **Immediate near-term action steps across the system**
  - Additional maintenance checks on control and other critical equipment prior to severe winter weather events
  - Additional temporary covers and heating equipment on critical equipment that is exposed to the elements
  - Work with our control center to turn on compression and run it in a bypass or unloaded condition so it will be ready for full load when needed
- **Additional action steps**
  - Fabricate and install permanent structures over certain critical control equipment and include appropriate heat equipment