

COMMONWEALTH OF KENTUCKY

BEFORE THE PUBLIC SERVICE COMMISSION

In the Matter of:

ELECTRONIC BIG SANDY WATER)	
DISTRICT’S UNACCOUNTED-FOR)	CASE NO.
WATER LOSS REDUCTION PLAN,)	2022-00301
SURCHARGE, AND MONTORING)	

**NOTICE OF AMENDMENT TO INFRASTRUCTURE IMPROVEMENT
PLAN AND MOTION FOR AUTHORIZATION FOR USE OF
SURCHARGE PROCEEDS**

Request for Expedited Decision by May 18, 2026

Pursuant to 807 KAR 5:001, Section 5, Big Sandy Water District (“Big Sandy District” or “the District”) gives notice it is amending its request to use Water Loss Reduction Surcharge (“Surcharge”) proceeds to construct the Bear Creek Road Water Line Replacement Project and the Friendship Road Water Line Replacement Project, (collectively “the Approved Water Line Replacement Projects”) and moves for authorization to use to use **\$105,000¹** of its Surcharge Funds to perform an **emergency relocation** of approximately 300 feet of 12-inch waterline along U.S. Highway 23 in Boyd County and to use **\$394,800** of its Surcharge Funds to replace customer meters that are 10 years old or older. Due to the emergency nature of the

¹ See, Exhibit 3, page entitled “Construction Quote” \$6,000 of the \$105,000 cost to relocate the line is for the labor cost to repair the line on February 18 & 19th March 25th and April 1st.

relocation, the District further respectfully requests the Commission enter a decision on this Motion by **May 18, 2026**. The Resolution authorizing this Motion is attached as **Exhibit 1**.

In support of its Notice and Motion, the District states the following:

BACKGROUND

1. In its June 9, 2025 Order in this proceeding the Commission granted Big Sandy District's request to use Surcharge proceeds to construct the Approved Water Line Replacement Projects. The estimated total to construct the Approved Water Line Replacement Projects is \$1,555,000.²

2. Because the estimated cost to construct the Approved Water Line Replacement Projects far exceeded the Surcharge Funds available, and because there are three other areas in the District's distribution system where older leaky water lines need to be replaced, the District sought the assistance of its consulting engineers, Sisler-Maggard Engineering, PLLC ("Sisler-Maggard"), in applying for a U.S. Department of Agriculture, Office of Rural Development ("RD") loan to construct the Approved Water Line Replacement Projects, the other three water line replacement projects, and to replace the White's Creek Booster Pump Station (the "RD Project"). The estimated total to construct the RD Project is \$4,000,000.

² The June 9, 2025 Order authorizes Big Sandy District to use "... surcharge funds up to the amount actually collected, remaining in the account, not to exceed the total amount to be collected by the original Order establishing the surcharge." for the Bear Creek and Friendship Road Projects. The current balance of the Surcharge Account is approximately \$731,000, and the District has approximately 17 months remaining to collect the surcharge.

3. The current balance available in the Surcharge account is approximately **\$731,000**.

4. The District has obligated \$69,399.10 in Surcharge funds to cover the cost of materials and equipment to create 10 additional District Metering Areas (“DMAs”).³ The materials and equipment to create the DMAs have been ordered, but due to longer lead-times related to the shipping of some items, the District has not yet received the materials and equipment or the invoice.

5. Therefore, The District currently has approximately **\$661,600** in Surcharge Funds available for use at this time.

6. The District collects approximately \$30,000 each month in Surcharge proceeds and there are 17 months remaining in the Surcharge period.

7. Therefore, the District estimates it will collect approximately **\$510,000** in additional Surcharge proceeds during the Surcharge period.

REQUEST

8. Line Relocation The District has amended its Infrastructure Improvement Plan (“the Plan”) to perform an emergency relocation of approximately 300 feet of 12-inch waterline along U.S. Highway 23 in Boyd County

³ This purchase was approved by the Commission in its May 1, 2025 Order in this proceeding. The Commission approved the use of \$101,528.89 for this purpose. The District has already received and paid the invoice for \$31,678.28 for a portion of the materials and equipment. \$69,399.10 is what the District owes for materials and equipment that have not yet been delivered, but that have been ordered.

because the line has failed twice in the past two months requiring extensive repairs. The District estimates it has lost approximately 1,500,000 gallons of water due to these failures. Therefore, this line is a current source of water loss.

9. Additionally, the line serves a large number of customers. Approximately 1,000 households lost water service for two days during one of the recent line failures.

10. The line that is in need of relocation is in area experiencing subsidence, it is currently leaking, and the District's consulting engineer has opined that future failures are **nearly inevitable** unless the line is relocated. Therefore, this line is likely to be a source of future water loss unless it is relocated.

11. The District's Chairman has declared an emergency, and the District has obtained price quotes for the labor and materials needed to relocate the line. The Certificate of Emergency is attached as **Exhibit 2**.

12. The engineering plans for the relocation, cost estimates, Kentucky Division of Water approval, and photographs illustrating the location of the line and the proposed relocation are attached as **Exhibit 3**.

13. Meter Replacement The District has decided to return replacing all of its 5/8 x 3/4-inch customer meters that are 10 years old or older to the Plan. Meter replacement is not new to Big Sandy District's Plan; it was included in the District's First Revised Plan, submitted in this proceeding on February 10, 2023.

14. The District has included meter replacement in its Plan because it has approximately **1,103** 5/8 x 3/4-inch meters in its system that are 10 years old or older, this places the District out of compliance with 807 KAR 5:066, Section 16. Filed separately as **Exhibit 4** is a list of the District's 5/8 x 3/4-inch meters and their corresponding dates of installation.

15. In its May 30, 2023 Order in this proceeding the Commission granted the District's request for authority to purchase 1,000 new Neptune MACH-10 ultrasonic meters. Big Sandy District purchased these meters in 2024, and they have been installed. The District is very pleased with the performance of these meters and now exclusively installs Neptune MACH-10 ultrasonic meters for its residential customers.

16. Because meters tend to inaccurately register water flow as they age, especially water moving through the meter at low flowrates, and because over 22 percent of the District's 5/8 x 3/4-inch meters are 10 years old or older, the District has concluded that the older meters are contributing to its high level of water loss.

17. Replacing aging meters that are susceptible to under-registering the water that passes through them is an important step to reducing water loss, as the Commission recognized when it approved the purchase of 1,000 new customer meters in this proceeding in 2023.

18. Big Sandy District recently advertised for bids for 1,200 Neptune

MACH-10 water meter bases and registers. The Affidavit of Publication for the advertisement and a tear sheet are attached as **Exhibit 5**.

19. The District received one bid from NECO Water.

20. If the District purchases the meters by **June 30, 2026**, the cost will be **\$394,800**. If the District purchases the meters after June 30, 2026, but before the end of the calendar year, the cost will be \$410,400. NECO Water's bid is attached as **Exhibit 6**.

21. Big Sandy District realizes that in order to reduce its water loss significantly, it must address all factors contributing to water loss. Relocating lines prone to failure because of their placement, replacing older leaking water lines, and replacing aging meters prone to under-registering customer usage are all important priorities.

22. The leadership of the District has concluded that in order to address the many sources contributing to its high level of water loss, Big Sandy District must make the best use of *available* funds and seek **additional** funds with which to improve its system. The Surcharge approved in Case No. 2022-00044⁴ is **one** source of funds to be used to address the District's water loss. It will not be possible for the District to address **all** sources of water loss with Surcharge Funds **alone**.

⁴ *Electronic Application of Big Sandy Water District for an adjustment of its Water Rates Pursuant to 807 KAR 5:076, Case No, 2022-00044* (Ky. PSC Sep. 13, 2022).

23. Big Sandy District is aggressively pursuing sufficient funds to address replacing older leaky water lines existing within its system, including the water lines in the Approved Water Line Replacement Projects, as soon as possible. The District has filed its pre-application for an RD Loan and is working with Sisler-Maggard to provide RD with the information needed to complete the formal application process. The District and its consulting engineer are optimistic that it will be successful in securing RD funds by the end of the current calendar year.

24. Replacing the line along U.S. Highway 23 must be done if the District is going to bring its water loss down to 15 percent or lower as required by 807 KAR 5:066, Section 6(3). Likewise, replacing older, under-registering meters must be done to reduce water loss and to bring the District into compliance with the meter-testing regulation. The District has decided that the best use of its currently available Surcharge Funds is to use them to accomplish these two goals as soon as possible.

25. The District still plans to use a portion of its Surcharge Funds to partially fund the Approved Water Line Replacement Projects but anticipates it will require a smaller contribution from Surcharge funds than originally anticipated.

26. Big Sandy District estimates that it will use approximately **\$570,000** of Surcharge Funds to partially fund the RD Project and has communicated this to RD in its pre-application.

27. The District estimates that it will have adequate Surcharge Funds to

contribute to the RD Project, to relocate the U.S. Highway 23 line, and to purchase the requested meters.⁵

28. The District respectfully requests that the Commission enter a decision on this Motion by **May 18, 2026**, so that it may proceed with the line relocation and timely order the meters at the lowest possible cost, should the Commission grant this request.

CONCLUSION

29. The District believes using Surcharge Funds to relocate the U.S. 23 line that has already failed and is likely to fail again and to replace inaccurate meters is the most beneficial way to utilize the funds currently available and achieve reduction of water loss.

30. Further, Big Sandy District is using its best efforts to obtain sufficient funds to replace its leak-prone water lines in the Approved Water Line Replacement Project areas as soon as possible and estimates it will have sufficient Surcharge Funds to make a \$570,000 contribution towards the project.

WHEREFORE, Big Sandy Water District respectfully requests that the Commission:

1. Accept Big Sandy District's amendment of its request to use Surcharge

⁵ \$661,600 currently available + \$510,000 estimated future collection = \$1,171,600
\$394,800 cost of meters + \$105,00 cost of line relocation + \$570,000 contribution to RD Project = \$1,069,800

proceeds to construct the Approved Water Line Replacement Projects;

2. Authorize the District to use to use \$105,000 of its Surcharge Funds to perform an emergency relocation of approximately 300 feet of 12-inch waterline along U.S. Highway 23 in Boyd County and to purchase 1,200 Neptune MACH-10 meters using Surcharge Funds;

3. Enter a decision on this Motion by May 18, 2026; and

4. Provide any and all other relief to which Big Sandy District may be entitled.

Dated: April 16, 2026

Respectfully submitted,

/s/Tina C. Frederick

Tina C. Frederick

300 West Vine Street, Suite 2100

Lexington, KY 40507

Telephone((859) 231-3951

Fax: (270) 358-9560

Tina.frederick@skofirm.com

Counsel for Big Sandy Water District

CERTIFICATE OF SERVICE

In accordance with 807 KAR 5:001, Section 8, and the Commission's Order of July 22, 2021, in Case No. 2020-00085, I certify that this document was submitted electronically to the Public Service Commission on April 16, 2026, and that there are currently no parties that the Public Service Commission has excused from participation by electronic means in this proceeding.

/s/ Tina C. Frederick
Tina C. Frederick

Exhibit 1

Resolution

RESOLUTION NO. 2026-04-01

**RESOLUTION OF BIG SANDY WATER DISTRICT
AUTHORIZING CHAIRMAN AND DISTRICT MANAGER
TO SEEK THE AUTHORITY OF THE KENTUCKY PUBLIC
SERVICE COMMISSION TO USE WATER LOSS
REDUCTION SURCHARGE FUNDS TO PERFORM
EMERGENCY WATER LINE RELOCATION ALONG U.S.
HIGHWAY 23 AND TO PURCHASE CUSTOMER METERS**

WHEREAS, Big Sandy Water District District (“the District”) is a water district organized pursuant to the provisions of KRS Chapter 74;

WHEREAS, KRS 278.015 provides that a water district is a utility and is subject to the jurisdiction of the Kentucky Public Service Commission (the “Commission”) in the same manner and to the same extent as any other utility;

WHEREAS, the Commission established a Water Loss Reduction Surcharge in Case No. 2022-00044 and authorized the District to collect \$6.42 per customer for 60 months to fund the District’s unaccounted-for water loss reduction efforts, (the “Surcharge Funds”);

WHEREAS, the District currently has approximately **\$731,000** in available Surcharge Funds

WHEREAS, there are currently over 1,000 customer meters in the District’s distribution system that are over 10-years old;

WHEREAS, water meters tend to under-register customer usage as they age and aging water meters are one source of unaccounted-for water loss;

WHEREAS, the District advertised for bids to replace 1,200 customer meters and received a low bid of \$394,800;

WHEREAS, the District’s General Manager and consulting engineer at Sisler-Maggard Engineering, PLLC (“Sisler-Maggard”) have represented that there is an urgent need for the District to immediately relocate approximately 300 feet of 12-inch water main along U.S. Highway 23 in Boyd County, Kentucky (the “Line”)

because continued subsidence of the land in the location of the Line has caused the Line to fail twice in the last two months;

WHEREAS, The General Manager estimates that the District lost approximately 1,500,000 gallons of water during the course of these line failures; therefore, this failing water line is also a source of unaccounted-for water loss;

WHEREAS, Sisler-Maggard has designed the relocation of the Line, obtained Division of Water approval for the relocation, and submitted a cost estimate of \$105,000 for the relocation to the District's management;

WHEREAS, the combined cost of the customer meters and the Line relocation is approximately **\$499,800**;

WHEREAS, The District's Chairman has declared the need to replace the Line constitutes an emergency within the meaning of KRS 45A.380(1);

WHEREAS, the District has adequate Surcharge Funds to purchase 1,200 meters and to fund the emergency Line relocation; and

WHEREAS, The District must obtain Commission approval before spending any Surcharge Funds.

NOW, THEREFORE, BE IT RESOLVED BY THE BOARD OF COMMISSIONERS OF BIG SANDY WATER DISTRICT AS FOLLOWS:

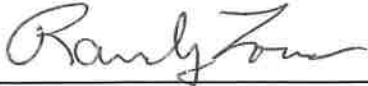
Section 1. The facts, recitals, and statements contained in the foregoing preamble of this Resolution are true and correct and are hereby affirmed and incorporated as a part of this Resolution.

Section 2. The Chairman and General Manager are each authorized and directed to take any and all actions reasonably necessary to prepare, execute, and submit a Motion to Use Surcharge Proceeds to the Commission as soon as practicable.

Section 3. This Resolution shall take effect upon its adoption.

Adopted by the Board of Commissioners of Big Sandy Water District at a meeting held on April 16, 2026, signed by the Chairman and attested by the Secretary.

BIG SANDY WATER DISTRICT

By: 
Randy Lowe, Chairman

ATTEST:


Darrell Bowling, Secretary

CERTIFICATION

The undersigned Secretary of Big Sandy Water District (the "District") does hereby certify that the foregoing is a true copy of a Resolution duly adopted by the District's Board of Commissioners at a meeting properly held on April 16, 2026, signed by the Chairman of the Board of Commissioners, attested by the Secretary of the Board of Commissioners, and now in full force and effect.

WITNESS my hand this 16th day of April 2026.


Darrell Bowling, Secretary

Exhibit 2

Certificate of Emergency

CERTIFICATE OF EMERGENCY
No. 2026-1

WHEREAS, the General Manager of Big Sandy Water District (“District”) and the District’s consulting engineer have represented to me that there is an urgent need for the District to immediately relocate approximately 300 feet of 12-inch water main along U.S. Highway 23 in Boyd County, Kentucky (the “Line”);

WHEREAS, due to subsidence of the land in the location of the Line, the Line is under stress and has failed twice in the past two months;

WHEREAS, approximately 1,000 families were without water for two days when the Line initially failed in February 2026;

WHEREAS, the Line failed again approximately two weeks ago and has been repaired in its current location;

WHEREAS, the land surrounding the Line continues to subside and the Line is known to be leaking at this time;

WHEREAS, the District’s consulting engineer has recommended relocating the Line away from the area of subsidence to prevent probable repeated failure of the Line;

WHEREAS, the Line is in urgent need of being relocated so that the District can continue to fulfill its duty to provide safe and reliable water service to its customers;

WHEREAS, the urgent need to relocate the Line constitutes an emergency within the meaning of KRS 45A.380(1). Public harm will result from the delay that would occur if normal competitive procurement procedures were followed;

WHEREAS, KRS 45A.380 and 424.260(4), under certain conditions, authorize the Chief Executive Officer of the District to certify that an emergency exists and to forego the normal procurement requirements of advertising for bids for the Line replacement in the newspaper; and

WHEREAS, time is of the essence.

NOW, THEREFORE, I DO HEREBY DECLARE THAT AN EMERGENCY EXISTS AND ISSUE THE FOLLOWING CERTIFICATE OF EMERGENCY:

Section 1. The facts, recitals, and statements contained in the foregoing preamble to this Certificate of Emergency are true and correct and are hereby affirmed and incorporated as a part of this Certificate of Emergency.

Section 2. Pursuant to the provisions of KRS 45A.380 and 424.260(4) and as the District's Chief Executive Officer, I hereby certify and declare that an emergency exists with respect to the relocation of the Line and issue this Certificate of Emergency.

Section 3. Pursuant to this Certificate of Emergency, it will not be necessary to advertise for bids for the relocation of the Line in the local newspaper as normal procurement requirements would otherwise dictate.

Section 4. I am filing a copy of this Certificate of Emergency with the District Treasurer as required by KRS 424.260(4).

Section 5. The effective date of this Certificate of Emergency is April 16, 2026.

Big Sandy Water District

BY: 

Randy Lowe,
Chairman and Chief Executive Officer

Exhibit 3

Cost Estimate and Engineering Plans

SISLER-MAGGARD ENGINEERING, PLLC.

220 E. REYNOLDS ROAD, SUITE A3

LEXINGTON, KY 40517

(859) 271-2978

Fax (859) 271-5670

E-MAIL sme@sislermaggard.com

LETTER OF TRANSMITTAL

DATE	4/14/2026	JOB NO.	26008
ATTENTION	Tina Frederick		
	Via email: tina.frederick@skofirm.com		
RE:	Big Sandy Water District		
	U.S. 23 / S.R. 757 – Water Transmission Line		
	Relocation		

TO Stoll Keenon Ogden, PLLC
300 W. Vine Street, Suite 2100
Lexington, KY 40507

FROM Joseph F. Sisler, PE, PLS

WE ARE SENDING YOU Attached Under separate cover via _____ the following items:

- Shop drawings
 Prints
 Plans
 Samples
 Specifications
 Copy of letter
 Change Order
 HAND DELIVERED

COPIES	DATE	NO.	DESCRIPTION
1			Project Description (1 page)
1			Preliminary Construction Cost Estimate (1 page)
1			Construction Quote (1 page)
1			Material Quotes (3 pages)
1			USDA-RD Fee Schedule (2 pages)
1			Pictures dated 2/20/26 (2 pages)
1			Pictures dated 3/20/26 (6 pages)
1			Pictures dated 4/02/26 (5 pages)
1			DOW Submittal Drawing (1 page)
1			DOW Approval Letter (5 pages)

THESE ARE TRANSMITTED as checked below:

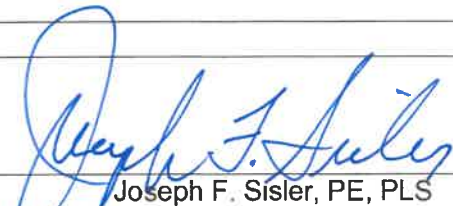
- For approval
 Approved as submitted
 Resubmit _____ copies for approval
 For your use
 Approved as noted
 Submit _____ copies for distribution
 As Requested
 Returned for corrections
 Return _____ corrected prints
 For review and comment

 FOR BIDS DUE
 PRINTS RETURNED AFTER LOAN TO US

REMARKS: _____

COPY TO BSWD
SME File

SIGNED:


 Joseph F. Sisler, PE, PLS

If enclosures are not as noted, kindly notify us at once

BIG SANDY WATER DISTRICT

EMERGENCY WATER LINE RELOCATION

U.S. 23 / S.R. 757 WATER TRANSMISSION LINE RELOCATION

PROJECT DESCRIPTION

The 12" CL 250 PVC water transmission main from the City of Kenova, WVA WTP on the west side of S.R. 757 was taken out of service 10+ years ago by a slide on the S.R. 757 KDOT road slope. The BSWD then relocated/replaced the line off of the KDOT slope and right of way to a location on **private property** ±10' off KDOT right of way and on original ground.

On February 18, 2026, the 12" waterline (on **private property**) broke and emptied water tanks on U.S. 23. The S.R. 757 1.5:1 highway slope, slid across the right of way line on to the **private property** and literally wiped out the 12" waterline (pictures attached). The KDOT road/slope slip has been repaired in the last year with the use of T-rails and riprap. The NEW pavement in pics is a clear indication of recent repairs. The location of the waterline on "**private property**" is in fact on a natural 2:1 slope, but the heavy riprap overburden is, in this writer's opinion, the clear reason for the waterline breaks.

Due to the natural slope and waterline location, the BSWD does not have large enough equipment to work/repair this waterline. Subsequently, a General Contractor with larger equipment must be hired for the repair. Due to the volatile (ground still moving, because of overburden) location, the General Contractor has had to mobilize men and large equipment to repair and continue to repair the line on February 18 and again on February 19, 2026. As stated above, the continuing earth movement has necessitated the contractor to return on March 25 and April 1, 2026 and make repairs.

After several delays in scheduling, the KDOT District Engineer from Flemingsburg and staff came to the site on March 20, 2026 to review the problem with District officials including the District's Engineers. The bottom line was that we/District could not prove that their (KDOT) slope/slide caused the waterline break (although it seems obvious to others) and therefore KDOT assumed NO responsibility. They did indicate that they would expedite an "Encroachment Permit" to **relocate** the 12" watermain across their right of way and across White's Creek to tie-in to existing 12" PVC on the same **private property** approximately 3-400 feet away.

The project has been designed with high density polyethylene (HDPE) waterline, as suggested & concurred by KDOT. The design has been submitted to Ky Division of Water for review and approval. They have also indicated that they would expedite review.

The District has received "emergency" quotes for labor from General Contractor and quotes from necessary materials suppliers to begin the relocation/replacement of the 12" transmission main serving approximately 2,000 customers in Boyd and Carter Counties, upon KDOW approval.

BIG SANDY WATER DISTRICT
PRELIMINARY CONSTRUCTION COST ESTIMATE
U.S. 23/S.R. 757 TRANSMISSION WATERLINE RELOCATION

Item No.	Description	Total Cost
1	Construction Quote (Attached)	\$45,158.00
2	Water Loss (4 Breaks) Purchased from Kenova WTP (Attached)	\$3,858.15
3	Miscellaneous Materials Purchased by BSWD (Invoices Attached)	
	a) ISCO 14" HDPE Pipe	\$12,726.56
	b) JABO Materials/Parts	\$12,626.70
	c) JABO Materials/Parts	\$1,365.46
	TOTAL	\$75,734.87

Contingency ± 5%	<u>\$4,265.13</u>
Total Estimated Construction Cost	\$80,000.00
Administrative Expenses	\$0.00
* Engineering Fees - Design (RD Schedule 80%)	\$8,960.00
Engineering Fees - Construction (RD Schedule 20%)	\$2,240.00
Engineering Fees - Inspection (RD Schedule)	\$10,400.00
Engineering Fees - Other KDOT Permits, etc.	<u>\$3,400.00</u>
TOTAL ESTIMATED PROJECT COSTS	\$105,000.00

* Fees per USDA-RD Schedule (Attached)

BIG SANDY WATER DISTRICT
CONSTRUCTION QUOTE
U.S. 23/S.R. 757 TRANSMISSION WATERLINE RELOCATION

Item No.	Description	Total Quantities	Unit Cost	Total Cost
1	14" HDPE DR9, IPS Waterline (LABOR ONLY)	253 L.F.	\$86.00	\$ 21,758.00
2	12" Gate Valves	2 EA.	\$4,500.00	\$ 9,000.00
3	Tie New 14" HDPE DR 9 , IPS Waterline to Existing 12" CL 250 PVC	2 EA.	\$3,000.00	\$ 6,000.00
4	Concrete Encasement (Stream)	30 L.F.	\$80.00	\$2,400.00
5	Leak Repair 4 Days	6,000.00	TOTAL	\$ 45,158.00

Opell Excavating, LLC
Company Name


President

4-13-2026
Date



Bill To:
125210
CITY OF TAYLORSVILLE
WATER SEWER
PO BOX 279
TAYLORSVILLE, KY 40071-0279

Ship To:
CITY OF TAYLORSVILLE
INTRSECTN OF US 23 AND SR 757
AT WHITES CREEK APROX 5 MILES
CATLETTSBURG, KY 41129
JIMMY BLANTON 606-831-1223

(a)

Order Confirmation

Order Number	01131783
Order Date	04/10/26
Page	1 of 1

Ship Via Best Way	Payment Terms NET 30	P/O Number VERBAL JOE
Freight Terms PREPAID AND ADD	Order Entered And Approved By REILLY CORUM	Job Number
Freight Collect Account #	PO Contact JOE SISLER	

#	Qty	UM	Product	Description	Each	Extended
(1)	280	FT	10140916	14" DR 9 IPS PIPE HDPE AWWA CL 250 FM [40' STICKS]	39.95	11,186.00
(2)	2	EA	53141116*	14" DR 11 IPS MJ ADAPTER ONLY PE W/ SS STIFF	404.52	809.04
(3)	2	EA	53140039*	14" ACCESSORY KIT C110 FOR MJ ADAPTER W/ BOLTS, GASKET	216.63	433.26
(4)	2	EA	53140045*	14" IPS / DIPS GLAND C110 RING W/ ACCESSORY KIT FOR MJ ADAPTE	149.13	298.26

*** PLEASE CONTACT JIMMY
BLANTON @ 606-831-1223 OR 606
-928-2075 APPROXIMATELY 4
HOURS BEFORE DELIVERY ***
DRIVER NEEDS TO CALL BEFORE.
DELIVERY AT INTERSECTION OF US
23 AND SR 757 AT WHITES CREEK,
LOCATED APPROX 5 MILES SOUTH
OF CATLETTSBURG IN BOYD
COUNTY, KY.

* Denotes Non-Stocking Item

ISCO Standard Terms and Conditions apply. Please visit <https://www.isco-pipe.com/terms-and-conditions.aspx>

Merchandise Total	Tax(1)	Shipping/Handling(2)	Order Total
12,726.56	0.00	0.00	US \$ 12,726.56
1 Sales tax will be charged based on the ship-to address at the time of invoice if there is no tax certificate on file.		Accepted By: _____	
2 Actual shipping/handling charges will be determined at the time of shipment.		Printed Name: _____	
		Date: _____	

100 WITHERSPOON ST * LOUISVILLE KY 40202
800-345-4726



JABO Supply Corporation

"Service is more than a promise"

Huntington

5164 Braley Street
P.O. Box 238
Huntington, WV 25705
Phone: (304) 736-8333
(800) 334-5226
Fax: (304) 736-8551

Parkersburg

10085 Emerson Avenue
P.O. Box 1109
Parkersburg, WV 26104
Phone: (304) 464-4400
(800) 624-2845
Fax: (304) 464-4419

Beckley

227 C&O Shop Road
P.O. Box 1866
Beaver, WV 25813
Phone: (304) 252-0000
(800) 295-5226
Fax: (304) 252-0011

Norton

205 Hawthorne Drive
P.O. Box 667
Norton, VA 24273
Phone: (276) 679-1224
(855) 888-5226
Fax: (276) 679-1266

Morganfield

118 Jim Veatch Road
Morganfield, KY 42437
Phone: (270) 389-3430
(844) 280-3430
Fax: (270) 389-3427

Proposal To:

Customer . . OPELL EXCAVATING LLC
Name/Inq# STEVE
Phone No..... 304 Ext:
Fax No.....

Quote No: 94479 **Rev-0**
Track# 72262-221
Date Entered: 4/09/26
Salesman: AB/42

Job Desc . . BIG SANDY

Expires: 4/16/26

Email.....
Terms..... NET 30 DAYS
FOB..... PREPAID & ALLOWED

Page: 1

Delivery:

QTY	ITEM NO	DESCRIPTION	UNIT	PRICE	EXTENDED
2	082-99990	14X12 MJ REDUCER C153 VPN MJR1412		550.23	1,100.46 ✓
2	135-00120	12" AVK 45-300-MMN GATE VLV MJ	EA	3,405.29	6,810.58 ✓
2	135-40000	CI VALVE BOX W/LID SCREW TYPE vpn VB562S	EA	132.00	264.00 ✓
2	082-31685	12 MJ SOLID SLV LONG C153 USA vpn MJSL12D	EA	469.33	938.66 ✓
20	086-30045	12"X20 DR18 C900 235#	FT	37.89	757.80 ✓
14 10	083-10205	12" IMP C900 STARGRIP 4000P vpn PVC4012G2	EA	✓ 196.80	1,968.00 2755.20

** ANY ITEM ENDING IN 99990 IS NON-CANCELABLE AND IS NON-RETURNABLE **

TOTAL ----> ~~11,839.50~~

#12,626.70

~~plus * 2-2272's~~
~~+ 4 mega lugs~~

Upon acceptance of this proposal, please indicate our quotation number on your purchase order and all other related correspondence.
This proposal is subject to the terms and conditions on the attached sheet.

Web site: www.jabosupply.com

Email: jabo@jabosupply.com

26008 INV (C)

JABO Supply Corporation

"Service is more than a promise"

Corp.

Huntington

5164 Braley Street
P.O. Box 238
Huntington, WV 25705
Phone: (304) 736-8333
(800) 334-5226
Fax: (304) 736-8551

Parkersburg

10085 Emerson Avenue
P.O. Box 1108
Parkersburg, WV 26104
Phone: (304) 484-4400
(800) 624-2645
Fax: (304) 484-4419

Beckley

227 C&O Shop Road
P.O. Box 1866
Beaver, WV 25813
Phone: (304) 252-0000
(800) 295-5226
Fax: (304) 252-0011

Norton

205 Hawthorne Drive
P.O. Box 667
Norton, VA 24273
Phone: (276) 679-1224
(856) 888-5226
Fax: (276) 679-1266

Morganfield

118 Jim Veatch Road
Morganfield, KY 42437
Phone: (270) 389-3430
(844) 280-3430
Fax: (270) 389-3427

Postal To:

Customer Name/Inq# : OPELL EXCAVATING LLC
Steve
Phone No. : 606
Fax No. : Ext:

Quote No: 94201 Rev-0
Track# 72262-220
Date Entered: 4/02/26
Salesman: AB/42
Expires: 4/09/26

Item Desc . . : BIG SANDY 12" HDPE BORE
Terms : NET 30 DAYS
FOB : PREPAID & ALLOWED
Delivery: STOCK HUNTINGTON

QTY	ITEM NO	DESCRIPTION	UNIT	PRICE	EXTENDED
400	029-20320	12" SDR 11 BLK HDPE PIPE	FT	29.35	11,740.00
2	029-83025	12" IPS SDR11 MJ ADP	EA	159.47	318.94
2	029-83245	12" INTEGRIFUSE MJ ASSY KIT	EA	88.72	177.44
2	082-31685	12 MJ SOLID SLV LONG C153 USA	EA	440.00	880.00
		vpn MJSL12D			
1	082-30100	12 45 MJ BEND C153 USA	EA	579.56 ✓	579.56
		vpn MJB4512D			
7	082-10190	12 22 1/2 MJ BEND C153	EA	392.95 ✓	392.95
		vpn MJB2212			
1	083-10205	12" IMP C900 STARCRIP 4000P	EA	196.80	196.80
		vpn PVC PK4012G2			
1	083-10235	12" IMP STARCRIP 4000P IPS PVC	EA	196.80	196.80
		vpn PVC PKT4012G2			

TOTAL ---> 14,482.49

~~918.38~~
\$1365.46

KENTUCKY USDA/RURAL DEVELOPMENT UTILITY PROGRAM FEE SCHEDULE

The following are Tables I and II which define the fees for Professional Engineering Services and Resident Project Representatives respectively. These tables are to be utilized in conjunction with projects using the "Engineers Joint Contract Documents Committee (EJCDC) documents for Project Contract Documents.

FEE SCHEDULE FOR PROFESSIONAL ENGINEERING SERVICES PERCENTAGE OF CONSTRUCTION COST

TABLE I – BASIC DESIGN

These fees shall pertain to projects requiring complex or detailed engineering design. This will include sewage treatment plants, sewage collection systems, sewage lift stations, water treatment plants, water distribution mains and appurtenances, water pump stations, water storage facilities and renovations of water and sewer facilities.

<u>NET CONSTRUCTION COST</u>	<u>PERCENTAGE FEE</u>
\$	
100,000	14.00
200,000	12.20
300,000	11.25
400,000	10.70
500,000	10.30
600,000	9.73
700,000	9.45
800,000	9.20
900,000	9.00
1,000,000	8.85
2,000,000	7.65
3,000,000	7.22
4,000,000	6.90
5,000,000	6.75
6,000,000	6.65
7,000,000	6.55
8,000,000	6.45
9,000,000	6.40

Fees for less complex projects such as light industrial buildings, roads, streets, storm drains 24 inches and larger, and appurtenances related thereto shall be 85% of the above Table I percentages.

Surveys for design such as topography, profiles, cross sections, and soundings (not to exceed six feet in depth) to estimate the amount of rock excavation are included in the basic service instead of being classified as additional services.

FEES FOR RESIDENT PROJECT REPRESENTATIVE SERVICES
PERCENTAGE OF CONSTRUCTION COST

TABLE I I – INSPECTION COSTS

<u>NET CONSTRUCTION COST</u>	<u>PERCENTAGE FEE</u>
\$	
100,000	13.00
200,000	10.40
300,000	8.80
400,000	8.00
500,000	7.40
600,000	6.80
700,000	6.40
800,000	6.00
900,000	5.80
1,000,000	5.60
2,000,000	4.60
3,000,000	4.00
4,000,000	3.70
5,000,000	3.50
6,000,000	3.32
7,000,000	3.20
8,000,000	3.12
9,000,000	3.05

NOTE: Add two percent to the above Table I I percentages for the first \$1,000,000 cost of treatment facilities. Add one percent to the above percentages for all over \$1,000,000 cost of treatment facilities.

GENERAL INFORMATION FOR BASIC AND RESIDENT PROJECT REPRESENTATIVE FEES

The Resident Project Representative will maintain a daily log meeting USDA/Rural Development Utility Program requirements. Compensation for construction costs between the values listed in the schedule should be determined by interpolation. If a project is divided into units and all units are authorized for design at the same time, the compensation will be determined by adding together the cost of the construction of the various units and applying the table to the sum of these costs. The initial construction award amount will set the fee percent for the project (change orders shall not adjust the fee percent). For construction inspection, the initial percent times the revised construction cost will create an up-set figure not to be exceeded. If remaining funds are used and additional construction is rebid, the project shall be treated as a new project with new fee percentages.

OWNER _____
TITLE _____
DATE _____

ENGINEER _____
TITLE _____
DATE _____

2/20/26



2/20/26



3/20/26





US 23

SR 707

KDOT
SLOPE



KDOT

12 11

12 23

12 11

THANKS

3/20/25



WATER

KDOT
SCOPE



KDOT SLOPE

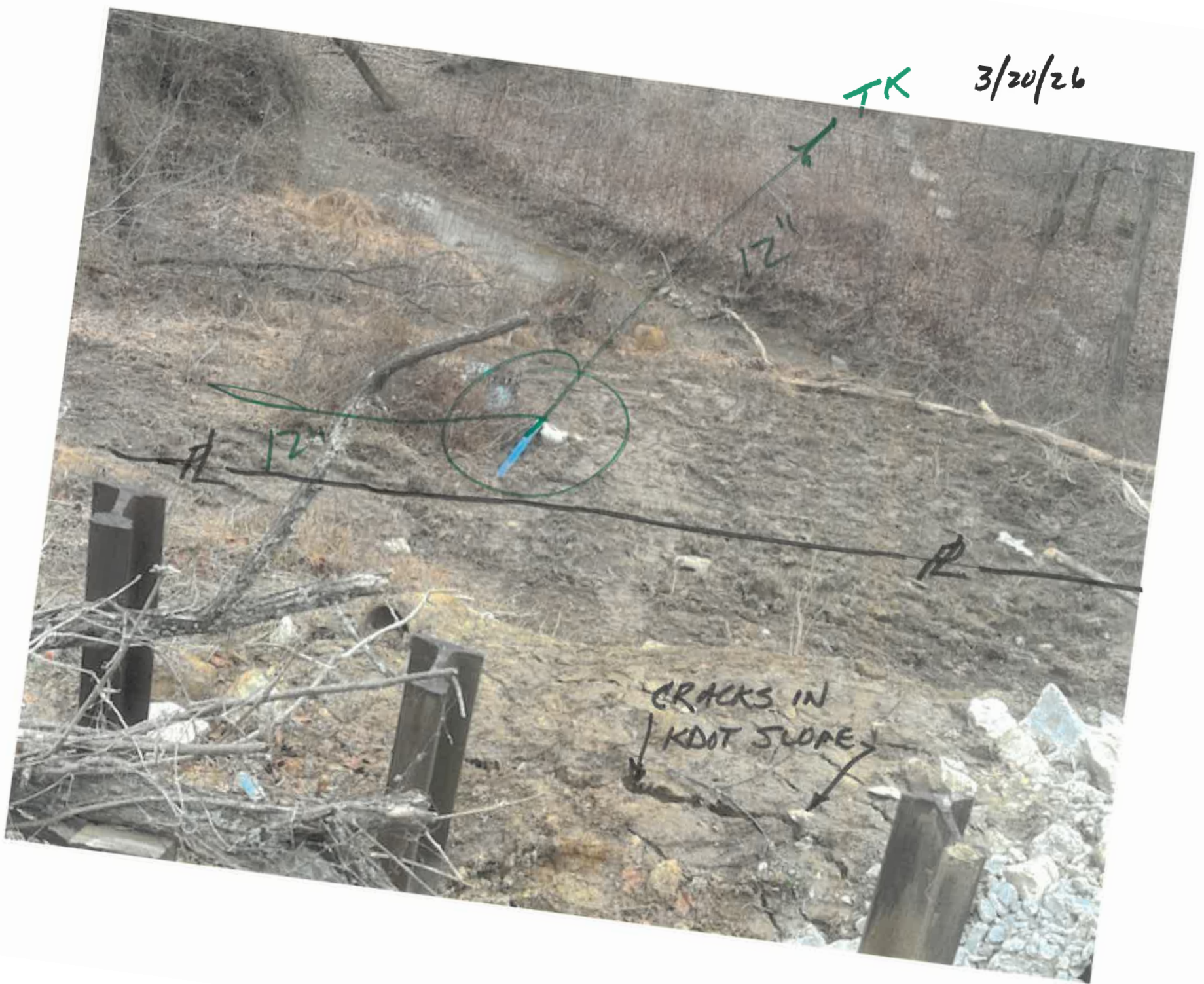
3/20/26

TK

12"

12"

CRACKS IN
KDOT SLOPE



4/2/26



4/2/26



4/2/26



4/2/26



4/2/26





Andy Beshear
GOVERNOR

ENERGY AND ENVIRONMENT CABINET
DEPARTMENT FOR ENVIRONMENTAL PROTECTION

300 Sower Boulevard
Frankfort, Kentucky 40601
Phone: (502) 564-2150
Fax: 502-564-4245

Rebecca W. Goodman
SECRETARY

Anthony R. Hatton
COMMISSIONER

April 14, 2026

James Blanton
Big Sandy Water District
1800 KY 3
Catlettsburg, KY 41129

RE: US 23/SR757 Water Transmission Line
Relocation (White's Creek)
Boyd County, KY
Big Sandy Water District
AI #: 33801, APE20260001
PWSID #: 0100944-26-001

Dear Mr. Blanton:

We have reviewed the plans and specifications for the above referenced project. The plans include the construction of approximately 253 linear feet of 14-inch HDPE water line. This is to advise that plans and specifications for the above referenced project are APPROVED with respect to sanitary features of design, as of this date with the requirements contained in the attached construction permit and the following stipulation:

- Floodplain approval, if required, for the stream crossing must be obtained prior to the commencement of construction.

If you have any questions concerning this project, please contact Brett Thompson at 502-782-4143.

Sincerely,

Terry Humphries, P.E.
Supervisor, Engineering Section
Water Infrastructure Branch
Division of Water

TH:BT

Enclosures

c: Sisler Maggard Engineering
Boyd County Health Department
Division of Plumbing

Distribution-Water Line Extension

Big Sandy Water District

Facility Requirements

Activity ID No.:APE20260001

Page 1 of 4

PORT0000000032 (US 27/757 Water Line Transmission Relocation) 253 linear feet of 14-inch HDPE water line:

Narrative Requirements:

Condition No.	Condition
T-1	Construction of this project shall not result in the water system's inability to supply consistent water service in compliance with 401 KAR 8:010 through 8:600. [401 KAR 8:100 Section 5]
T-2	The public water system shall not implement a change to the approved plans without the prior written approval of the cabinet. [401 KAR 8:100 Section 4(3)]
T-3	A proposed change to the approved plans affecting sanitary features of design shall be submitted to the cabinet for approval in accordance with Section 2 of this administrative regulation. [401 KAR 8:100 Section 4(2)]
T-4	During construction, a set of approved plans and specifications shall be available at the job site. Construction shall be performed in accordance with the approved plans and specifications. [401 KAR 8:100 Section 3(1)]
T-5	Unless construction begins within two (2) years from the date of approval of the final plans and specifications, the approval shall expire. [401 KAR 8:100 Section 3(3)]
T-6	Upon completion of construction, a professional engineer shall certify in writing that the project has been completed in accordance with the approved plans and specifications. [401 KAR 8:100 Section 4(1)]
T-7	The system shall be designed to maintain a minimum pressure of 20 psi at ground level at all points in the distribution system under all conditions of flow. [Recommended Standards for Water Works 8.2.1, Drinking Water General Design Criteria IV.1.a]
T-8	Water lines should be hydraulically capable of a flow velocity of 2.5 ft/s while maintaining a pressure of at least 20 psi. [Drinking Water General Design Criteria IV.1.b]
T-9	The normal working pressure in the distribution system at the service connection shall not be less than 30 psi under peak demand flow conditions. Peak demand is defined as the maximum customer water usage rate, expressed in gallons per minute (gpm), in the pressure zone of interest during a 24 hour (diurnal) time period. [Drinking Water General Design Criteria IV.1.d]
T-10	When static pressure exceeds 150 psi, pressure reducing devices shall be provided on mains or as part of the meter setting on individual service lines in the distribution system. [Drinking Water General Design Criteria IV.1.c]
T-11	The minimum size of water main in the distribution system where fire protection is not to be provided should be a minimum of three (3) inch diameter. Any departure from minimum requirements shall be justified by hydraulic analysis and future water use, and can be considered only in special circumstances. [Recommended Standards for Water Works 8.2.2, Drinking Water General Design Criteria IV.2.b]

Distribution-Water Line Extension

Big Sandy Water District

Facility Requirements

Activity ID No.:APE20260001

Page 2 of 4

PORT0000000032 (US 27/757 Water Line Transmission Relocation) 253 linear feet of 14-inch HDPE water line:

Narrative Requirements:

Condition No.	Condition
T-12	Water mains not designed to carry fire-flows shall not have fire hydrants connected to them. [Recommended Standards for Water Works 8.4.1.b]
T-13	Flushing devices should be sized to provide flows which will give a velocity of at least 2.5 feet per second in the water main being flushed. [Recommended Standards for Water Works 8.2.4.b, Recommended Standards for Water Works 8.4.1.b]
T-14	No flushing device shall be directly connected to any sewer. [Recommended Standards for Water Works 8.2.4.b, Recommended Standards for Water Works 8.4.1.b]
T-15	Pipe shall be constructed to a depth providing a minimum cover of 30 inches to top of pipe. [Drinking Water General Design Criteria IV.3.a]
T-16	Water mains shall be covered with sufficient earth or other insulation to prevent freezing. [Recommended Standards for Water Works 8.7]
T-17	A continuous and uniform bedding shall be provided in the trench for all buried pipe. Backfill material shall be tamped in layers around the pipe and to a sufficient height above the pipe to adequately support and protect the pipe. Stones found in the trench shall be removed for a depth of at least six inches below the bottom of the pipe. [Recommended Standards for Water Works 8.7]
T-18	Water line installation shall incorporate the provisions of the AWWA standards and/or manufacturer's recommended installation procedures. [Recommended Standards for Water Works 8.7]
T-19	All materials used for the rehabilitation of water mains shall meet ANSI/NSF standards. [Recommended Standards for Water Works 8.1]
T-20	Packing and jointing materials used in the joints of pipe shall meet the standards of AWWA and the reviewing authority. [Recommended Standards for Water Works 8.1]
T-21	All tees, bends, plugs and hydrants shall be provided with reaction blocking, tie rods or joints designed to prevent movement. [Recommended Standards for Water Works 8.7]
T-22	All materials including pipe, fittings, valves and fire hydrants shall conform to the latest standards issued by the ASTM, AWWA and ANSI/NSF, where such standards exist, and be acceptable to the Division of Water. [Recommended Standards for Water Works 8.1]
T-23	Water mains which have been used previously for conveying potable water may be reused provided they meet the above standards and have been restored practically to their original condition. [Recommended Standards for Water Works 8.1]

Distribution-Water Line Extension

Big Sandy Water District

Facility Requirements

Activity ID No.:APE20260001

Page 3 of 4

PORT0000000032 (US 27/757 Water Line Transmission Relocation) 253 linear feet of 14-inch HDPE water line:

Narrative Requirements:

Condition No.	Condition
T-24	Manufacturer approved transition joints shall be used between dissimilar piping materials. [Recommended Standards for Water Works 8.1]
T-25	The minimum size of water main which provides for fire protection and serving fire hydrants shall be six-inch diameter. [Recommended Standards for Water Works 8.2, Drinking Water General Design Criteria IV.2.a]
T-26	Pipes and pipe fittings containing more than 8% lead shall not be used. All products shall comply with ANSI/NSF standards. [Recommended Standards for Water Works 8.1]
T-27	Gaskets containing lead shall not be used. Repairs to lead-joint pipe shall be made using alternative methods. [Recommended Standards for Water Works 8.1]
T-28	Pipe materials shall be selected to protect against both internal and external pipe corrosion. [Recommended Standards for Water Works 8.1]
T-29	Dead end mains shall be equipped with a means to provide adequate flushing. [Recommended Standards for Water Works 8.2]
T-30	The hydrant lead shall be a minimum of six inches in diameter. Auxiliary valves shall be installed on all hydrant leads. [Recommended Standards for Water Works 8.4.3]
T-31	A sufficient number of valves shall be provided on water mains to minimize inconvenience and sanitary hazards during repairs. [Recommended Standards for Water Works 8.3]
T-32	Wherever possible, chambers, pits or manholes containing valves, blow-offs, meters, or other such appurtenances to a distribution system, shall not be located in areas subject to flooding or in areas of high groundwater. Such chambers or pits should drain to the ground surface, or to absorption pits underground. The chambers, pits and manholes shall not connect directly to any storm drain or sanitary sewer. Blow-offs shall not connect directly to any storm drain or sanitary sewer. [Recommended Standards for Water Works 8.6]
T-33	At high points in water mains where air can accumulate provisions shall be made to remove the air by means of air relief valves. [Recommended Standards for Water Works 8.5.1]
T-34	Automatic air relief valves shall not be used in situations where flooding of the manhole or chamber may occur. [Recommended Standards for Water Works 8.5.1]
T-35	The open end of an air relief pipe from automatic valves shall be extended to at least one foot above grade and provided with a screened, downward-facing elbow. [Recommended Standards for Water Works 8.5.2.c]

Distribution-Water Line Extension

Big Sandy Water District

Facility Requirements

Activity ID No.:APE20260001

Page 4 of 4

PORT000000032 (US 27/757 Water Line Transmission Relocation) 253 linear feet of 14-inch HDPE water line:

Narrative Requirements:

Condition No.	Condition
T-36	Discharge piping from air relief valves shall not connect directly to any storm drain, storm sewer, or sanitary sewer. [Recommended Standards for Water Works 8.5.2.d]
T-37	Water pipe shall be constructed with a lateral separation of 10 feet or more from any gravity sanitary or combined sewer measured edge to edge where practical. If not practical a variance may be requested to allow the water pipe to be installed closer to the gravity sanitary or combined sewer provided the water pipe is laid in a separate trench or undisturbed shelf located on one side of the sewer with the bottom of the pipe at least 18 inches above the top of the gravity sanitary or combined sewer pipe. [Drinking Water General Design Criteria IV.3.b]
T-38	Water lines crossing sanitary, combined or storm sewers shall be laid to provide a minimum vertical distance of 18 inches between the outside of the water main and the outside of the sanitary, combined or storm sewer with preference to the water main located above the sanitary, combined or storm sewer. [Drinking Water General Design Criteria IV.3.c]
T-39	At crossings, one full length of water pipe shall be located so both joints will be as far from the sewer as possible. [Recommended Standards for Water Works 8.8.3.b]
T-40	There shall be no connection between the distribution system and any pipes, pumps, hydrants, or tanks whereby unsafe water or other contaminating materials may be discharged or drawn into the system. [Recommended Standards for Water Works 8.10.1]
T-41	Water utilities shall have a cross connection program conforming to 401 KAR 8. [Recommended Standards for Water Works 8.10.1]
T-42	Installed pipe shall be pressure tested and leakage tested in accordance with the appropriate AWWA Standards. [Recommended Standards for Water Works 8.7.6]
T-43	New, cleaned and repaired water mains shall be disinfected in accordance with AWWA Standard C651. The specifications shall include detailed procedures for the adequate flushing, disinfection, and microbiological testing of all water mains. In an emergency or unusual situation, the disinfection procedure shall be discussed with the Division of Water. [Recommended Standards for Water Works 8.7.7]
T-44	A minimum cover of five feet shall be provided over pipe crossing underwater. [Recommended Standards for Water Works 8.9.2]
T-45	Valves shall be provided at both ends of water crossings so that the section can be isolated for testing or repair; the valves shall be easily accessible, and not subject to flooding for pipes crossing underwater. [Recommended Standards for Water Works 8.9.2.b]
T-46	Permanent taps or other provisions to allow insertion of a small meter to determine leakage and obtain water samples on each side of the valve closest to the supply source for pipes crossing. [Recommended Standards for Water Works 8.9.2.c]

Exhibit 4

Filed Separately

List of Meters by Installation Date

Exhibit 5

Advertisement for Bids

ow Bevin —
court he has
e the records —
the contempt
er he has re-
ucky.
the warrant ap-

she was biased.
Bevin claimed Johnson's
rulings against him were mo-
tivated by her desire for media
attention because of his former
role as governor from 2015-
2019. He also said the judge has

tion," Johnson's order said.
The judge added: "Upon a
final ruling, he has the right to
appeal any unfavorable out-
come. He does not, however,
have the right to indefinitely
delay proceedings."

o see a pain?

single injury, such as a pop
knee while playing pickle-

common spring joint injuries

Because of the increase in activ-
ity in moving from winter to
spring there are some injuries that
are fairly common. Some of
these include osteoarthritis flare,
osteoarthritis in the knee and elbow
overuse and ankle sprains.
There is also an increase in some
serious injuries such as lig-
ament and tendon tears as well as
injuries from falls.

Prevention

Remaining active has positive
impacts on numerous aspects of
overall health. For this reason, it is
important to take steps towards
preventing injury so that you can re-
turn to an active lifestyle.

- Warm up to help prevent injury:
- Stretching before activity
- Stretching after activity
- Gradually increasing your ac-
tivity levels over a period of time to
avoid overuse
- Maintaining proper nutrition

Dr. [Name], D.O., is assistant professor of ortho-
pedics and sports medicine at the University
of Kentucky.

PUBLIC NOTICES

PUBLIC NOTICE ADVERTISEMENT FOR BIDS

Big Sandy Water District is accepting sealed bids for providing approximately 1,200 **Neptune MACH 10 ultrasonic water meters** (5/8 x 3/4-inch with R900i Radio Transmitter and with the register to read in gallons). Bids will be received until 10:00 a.m. EST on Monday, April 6, 2026, at Big Sandy Water District, 18211 State Route 3, Catlettsburg, Kentucky 41129 at which time the bids will be publicly opened and read aloud. No bidder may withdraw its bid for 30 days from the bid opening date.

Contact Jimmy Blanton at Big Sandy Water District (Phone: 606-928-2075 or email bdistrict@windstream.net) for the meter specifications or if you need additional information.

Big Sandy Water District reserves the right to reject any and all bids or to waive any informalities.
Published: March 28, 2026

BOYD CIRCUIT COURT CIVIL ACTION NO. 25-CI-00118

PENNYMAC LOAN SERVICES, LLC PLAINTIFF,
vs. **ADVERTISEMENT**
JUSTIN CONLEY, aka JUSTIN WAYNE GRAYSON,
aka JUSTIN W. GRAYSON;
KELSI CONLEY, DEFENDANTS.

Pursuant to Order to Reschedule Sale entered on March 13, 2026, I shall sell the property described herein below at public auction in the lobby inside the front door of the old Boyd County Courthouse, Catlettsburg, Kentucky, on **Friday, April 17, 2026, at 11:25 a.m.**, to highest bidder on the following terms:

Full purchase price will be due at time of sale, payable by personal, business or official check. We do not accept cash. **IF the Master Commissioner has pre-approved the surety and collateral for a bidder's bond,** a down payment of ten-percent (10%) of the purchase price will be due at time of sale, and the unpaid balance with interest at the rate of **6.75% per annum** will be due within thirty (30) days from the date of sale.

Address of Property: 15542 Richland Court, Catlettsburg
(For Legal Description, see LSOT: Deed Book 844, Page 453, Boyd County Clerk's Office)

Map/Parcel ID Number: 026-04-00-005.00

NOTE - Only delinquent ad valorem taxes shall be paid from the sale proceeds. The Purchaser shall be responsible for payment of the taxes for the current year and thereafter.

/s/ Kenneth Williams, Jr.
KENNETH WILLIAMS, JR.
BOYD CIRCUIT COURT
MASTER COMMISSIONER

Please visit our website:
www.boydcountykymastercommissioner.com
Published: March 28 and April 9, 2026

BIG SANDY WATER DISTRICT
OPERATION & MAINTENANCE
18211 KY-3
CATLETTSBURG KY 41129

NEWSPAPER AFFIDAVIT

I, LEANNA HANKINS, EDITORIAL CLERK OF THE DAILY INDEPENDENT NEWSPAPER PUBLISHED IN ASHLAND, AND HAVING THE LARGEST CIRCULATION OF ANY NEWSPAPER IN THE BOYD COUNTY, KENTUCKY, DO HEREBY CERTIFY THAT FROM MY OWN KNOWLEDGE AND A CHECK OF THE FILES OF THIS NEWSPAPER THAT THE FOLLOWING ADVERTISEMENT WAS INSERTED IN THE DAILY INDEPENDENT.

SIGNATURE: Leanna Hankins

SUBSCRIBED AND SWORN TO BEFORE ME BY THE ABOVE, THIS 30th DAY OF March, 2026

NOTARY PUBLIC Ashley M Fletcher

MY COMMISSION EXPIRES _____

Ashley M. Fletcher
Notary Public, Commonwealth of Kentucky
Commission # KYNP88450
Expiration date. 5/15/2028

COMMENTS	EXPIRED DATE	AD CAPTION	#TIMES	AMOUNT
THE DAILY INDEPE 03/28/2026	03/28/2026	NEPTUNE MACH 10	1	165.00

Exhibit 6

Meter Bid



Big Sandy Water District
Jessica Sexton
18211 KY-3
Catlettsburg, KY 41129

Jessica,

Included in this sealed envelope are quotes for 1200 MACH meter bases and potted r900i registers to match your existing MACH meters. These meters can be read with your existing Neptune reading system.



MACH 10



MACH 10®)R900i™ Ultrasonic Meter

I look forward to further discussing this project.

Thanks,

Nicole Zaluski

Nicole Zaluski



NECO Water
 12125 ELLINGTON COURT
 CINCINNATI, OH, 45249

QUOTE

Quote Nbr.: **Q000944**
 Order Date: 9/26/2025
 Valid Until: 6/30/2026
 Sales Person: Nicole Zaluski
 Customer ID: BIG010
 Reference:
 Payment Terms:
 For: Jessica Sexton

FOR:
 BIG SANDY
 18200 STATE ROUTE 3
 CATLETTSBURG KY 41129
 United States of America

SHIP TO:
 BIG SANDY
 18200 STATE ROUTE 3
 CATLETTSBURG KY 41129
 United States of America

BILL TO:
 BIG SANDY
 18200 STATE ROUTE 3
 CATLETTSBURG KY 41129
 United States of America

NO.	ITEM	QTY.	UOM	PRICE	DISC.	AMOUNT
1	EU1B1G1B1A: 5/8X3/4 ULTRASONIC MACH 2 SA GAL	1,200.00	EA	204.00	0%	244,800.00
2	13442-400: R900 V4 PIT MIU 6' ASSY COMP FOR P/R PIT R	1,200.00	EA	125.00	0%	150,000.00

Signature:

Quote Total: 394,800.00
Less Discount: 0.00
Tax Total: 0.00
Total (USD): 394,800.00



NECO Water
 12125 ELLINGTON COURT
 CINCINNATI, OH, 45249

QUOTE

Quote Nbr.: **Q000982**
 Order Date: 3/17/2026
 Valid Until: 12/31/2026
 Sales Person: Nicole Zaluski
 Customer ID: BIG010
 Reference:
 Payment Terms:
 For: Jessica Sexton

FOR:
 BIG SANDY
 18200 STATE ROUTE 3
 CATLETTSBURG KY 41129
 United States of America

SHIP TO:
 BIG SANDY
 18200 STATE ROUTE 3
 CATLETTSBURG KY 41129
 United States of America

BILL TO:
 BIG SANDY
 18200 STATE ROUTE 3
 CATLETTSBURG KY 41129
 United States of America

NO.	ITEM	QTY.	UOM	PRICE	DISC.	AMOUNT
1	EU1B1G1B1A: 5/8X3/4 ULTRASONIC MACH 2 SA GAL	1,200.00	EA	211.00	0%	253,200.00
2	13442-400: R900 V4 PIT MIU 6' ASSY COMP FOR P/R PIT R	1,200.00	EA	131.00	0%	157,200.00

Signature:

Quote Total: 410,400.00
Less Discount: 0.00
Tax Total: 0.00
Total (USD): 410,400.00