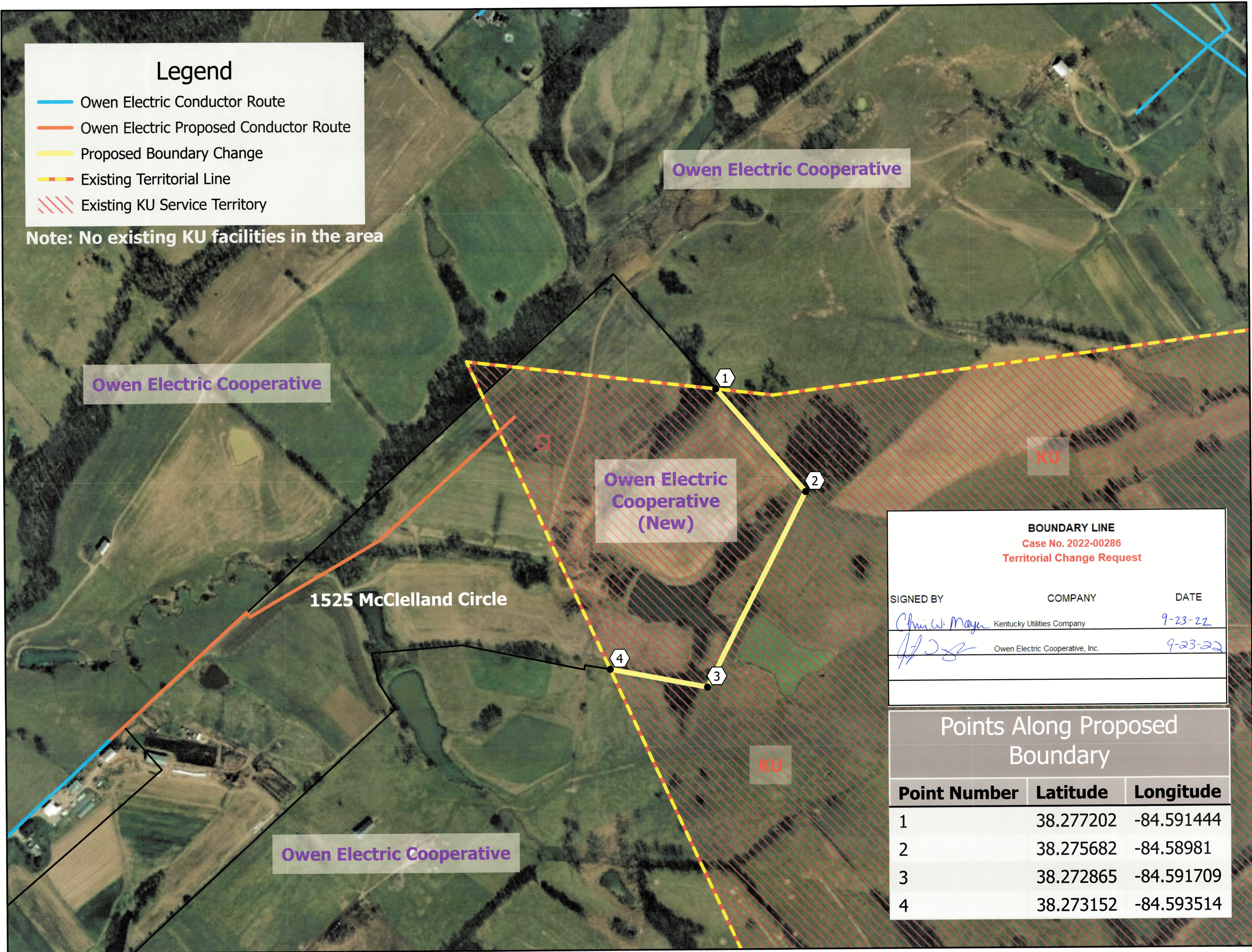


**Legend**

- Owen Electric Conductor Route
- Owen Electric Proposed Conductor Route
- Proposed Boundary Change
- Existing Territorial Line
- Existing KU Service Territory

Note: No existing KU facilities in the area



**BOUNDARY LINE**  
Case No. 2022-00286  
Territorial Change Request

SIGNED BY	COMPANY	DATE
<i>Chris W. Maye</i>	Kentucky Utilities Company	9-23-22
<i>A. J. ...</i>	Owen Electric Cooperative, Inc.	9-23-22

**Points Along Proposed Boundary**

Point Number	Latitude	Longitude
1	38.277202	-84.591444
2	38.275682	-84.58981
3	38.272865	-84.591709
4	38.273152	-84.593514