

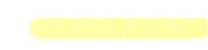


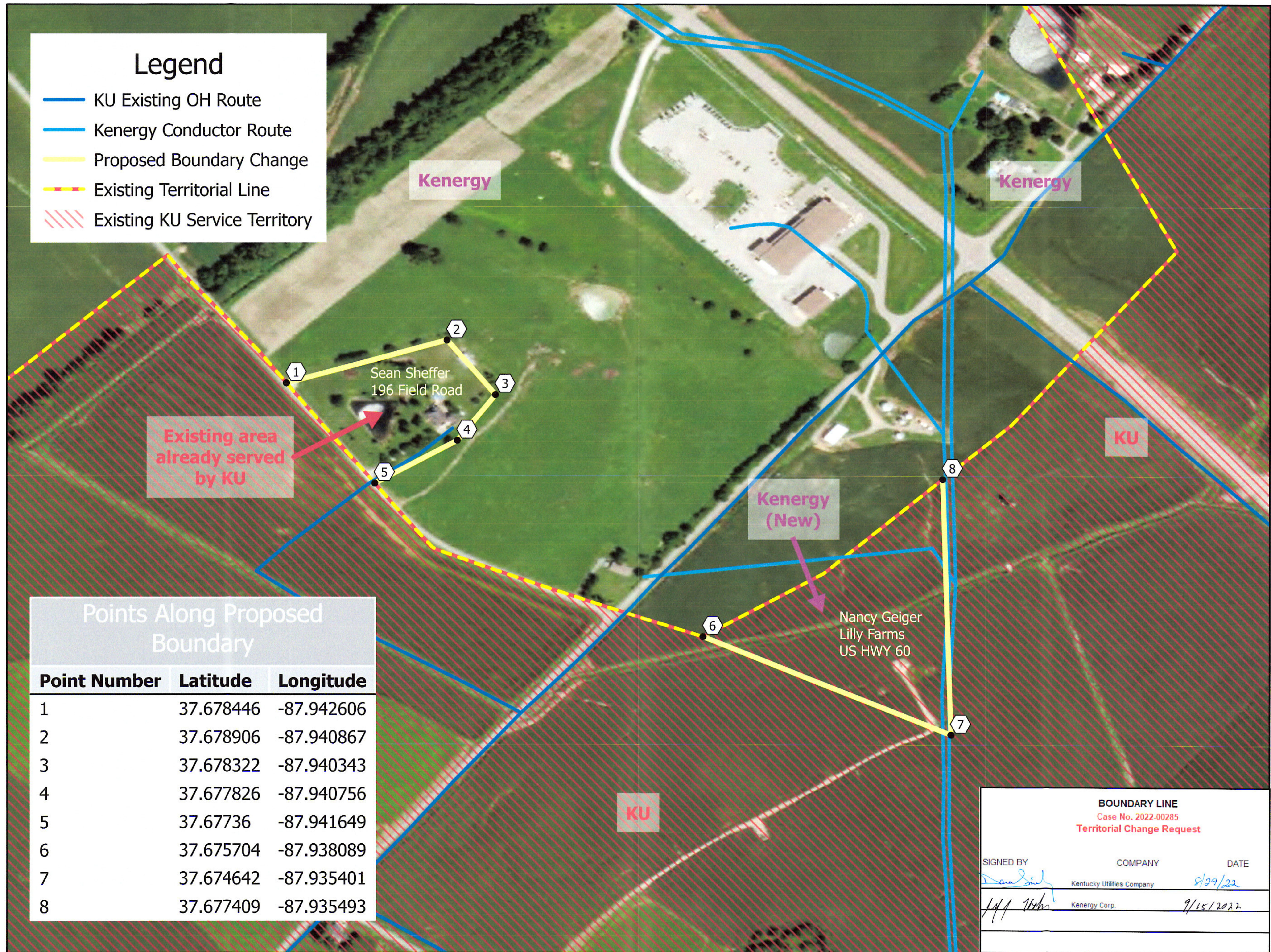


### Legend


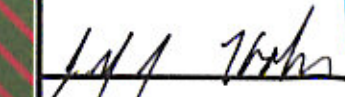
-  KU Existing OH Route
-  Kenergy Conductor Route
-  Proposed Boundary Change
-  Existing Territorial Line
-  Existing KU Service Territory



### Points Along Proposed Boundary

Point Number	Latitude	Longitude
1	37.678446	-87.942606
2	37.678906	-87.940867
3	37.678322	-87.940343
4	37.677826	-87.940756
5	37.67736	-87.941649
6	37.675704	-87.938089
7	37.674642	-87.935401
8	37.677409	-87.935493

**BOUNDARY LINE**  
Case No. 2022-00285  
**Territorial Change Request**

SIGNED BY	COMPANY	DATE
	Kentucky Utilities Company	8/29/22
	Kenergy Corp.	9/15/2022