

Hummingbird Energy LLC
Supplemental Responses to Siting Board Staff's First Request for Information
Case No. 2022-00272

Request No. 1:

Submit a copy of the leases or purchase agreements, including options, separate agreements, or deeds which Hummingbird Solar has entered into in connection with the proposed solar facility, including the agreements for each of the parcels of the project.

Original Response:

Due to file size limitations, please find the Project's redacted lease, purchase, and easement agreements attached as separate documents.

Supplemental Response:

Due to file size limitations, please find updated copies of the Project's redacted lease and easement agreements attached as separate documents. The following landowner leases have been revised to narrow the scope of redaction within each respective instrument: Eric and Aileen Carpenter, Helen Caudill and Tanner Floyd, Sandra Caudill Mattox and Johnny Mattox, Helen Caudill, Larry and Davetta Coffey, Eula Skaggs, Geneva Earls, John Gooding, Andrew Graham, Andrew Heflin, Rick and Teresa Hord, Jimmie and Geraldine Kegley, Keven and Gwen Ocul, Ben and Judy Peachey, Richard Lowe, Cheryl Souder, Mary Lu Stephens, Thomas Skaggs, Johnny Tucker, and Donald and Sharon Young. Also, in addition to the First Amendment to Solar Ground Lease Agreement between Hummingbird and Eric and Aileen Carpenter, the Applicant has supplied the original Solar Ground Lease Agreement, which was omitted from the leases attached to Hummingbird's Original Response. Additionally, Hummingbird has revised the easement agreements with the following landowners to clearly and uniformly indicate the redacted portions of each respective easement: Mary Brewer; Duane and April Lowe; Melodye, Bradley, and James Galbreath; Sherri Griffith; Michael and Barbara Hill; Randall and Willa Meadows; Natalie, Ruby, and Karen

Hummingbird Energy LLC
Supplemental Responses to Siting Board Staff's First Request for Information
Case No. 2022-00272

Mineer; Ruby Mineer; Daniel Schwartz, and Marcus and Mary Miller; Jason Schwartz; Kelley Smith and Leslie Litzler; and Lyle and Vickie Utterback.

Responding Witness: Orla Lavender

Hummingbird Energy LLC
Supplemental Responses to Siting Board Staff's First Request for Information
Case No. 2022-00272

Request No. 13:

Provide a detailed table listing all residential structures located within 2,000 feet of the Project boundary line. For each structure, provide: the distance to the boundary line; the distance to the closest solar panel; the distance to the nearest inverter; and the distance to the substation.

Original Response:

A 1,000 foot radius search for residential structures was utilized for Project analyses. This 1,000 foot radius is based on noise modeling sets with 1,000 feet as the threshold for any Project noise to diminish to 55 dBA and/or EPA-acceptable levels. A revised table that accounts for a 2,000-foot boundary line is being produced and will be submitted to the Siting Board by August 25, 2023.

Supplemental Response:

Please see attached.

Responding Witness: Adam Peterson, Chad Martin

Response to Comments #13. Residential Structures located within 2000 Feet of the Project

Receptor Number	Distance to Substation (ft)	Distance to Inverter (ft)	Distance to Solar Panel (ft)	Distance to Boundary (ft)	X (KY State Plane North)	Y (KY State Plane North)	Participating	Buffer Distance
mt carmel bible fellowship	2604	1967	493	407	1814184.367	350877.549	Non-Participating	0-1000ft
mt carmel christian church	4284	2208	1083	986	1814980.891	358843.332	Non-Participating	0-1000ft
R1	16202	1428	539	465	1814810.626	337276.981	Non-Participating	0-1000ft
R2	15228	1989	912	844	1815506.638	338262.532	Non-Participating	0-1000ft
R3	13969	992	480	429	1813259.569	339547.787	Non-Participating	0-1000ft
R4	15325	539	4	230	1811760.756	338362.960	Participating	0-1000ft
R5	16576	761	50	61	1808936.108	337789.424	Participating	0-1000ft
R6	16928	762	99	58	1807654.097	337903.322	Participating	0-1000ft
R7	14698	1537	1030	989	1808170.418	340112.010	Non-Participating	0-1000ft
R8	14958	1475	906	850	1807809.210	339994.430	Non-Participating	0-1000ft
R9	15848	1525	670	560	1806899.818	339456.318	Non-Participating	0-1000ft
R10	16537	1326	384	319	1806528.252	338873.584	Non-Participating	0-1000ft
R11	17477	1739	821	587	1806185.786	337991.101	Non-Participating	0-1000ft
R12	17349	1019	438	385	1805498.403	338518.262	Non-Participating	0-1000ft
R13	17800	1252	732	662	1804844.847	338387.167	Non-Participating	0-1000ft
R14	18081	1521	1061	988	1804497.605	338274.576	Non-Participating	0-1000ft
R15	14048	1117	1002	914	1804373.984	343520.962	Non-Participating	0-1000ft
R16	13586	1184	985	850	1805388.935	343209.080	Non-Participating	0-1000ft
R17	12998	1411	877	832	1806122.008	343362.726	Non-Participating	0-1000ft
R18	12806	1703	1076	993	1806478.778	343326.268	Non-Participating	0-1000ft
R19	12699	1602	948	848	1806460.549	343474.705	Non-Participating	0-1000ft
R20	12599	1548	846	742	1806470.966	343594.497	Non-Participating	0-1000ft
R21	12523	1458	719	614	1806435.810	343719.497	Non-Participating	0-1000ft
R22	12355	1408	568	467	1806461.851	343914.810	Non-Participating	0-1000ft
R23	12072	1348	374	317	1806472.268	344274.185	Non-Participating	0-1000ft
R24	11966	1331	350	304	1806457.945	344426.528	Non-Participating	0-1000ft
R25	11733	1411	368	305	1806499.612	344699.966	Non-Participating	0-1000ft
R26	11524	1250	394	310	1806780.862	344731.216	Non-Participating	0-1000ft
R27	11746	1473	542	476	1806658.466	344543.716	Non-Participating	0-1000ft
R28	11909	1536	557	506	1806663.674	344326.268	Non-Participating	0-1000ft
R29	12004	1550	584	519	1806668.910	344198.450	Non-Participating	0-1000ft
R30	12265	1625	754	658	1806672.789	343860.122	Non-Participating	0-1000ft
R31	12388	1666	851	750	1806661.070	343712.987	Non-Participating	0-1000ft
R32	12480	1722	950	847	1806667.581	343591.893	Non-Participating	0-1000ft
R33	10009	1655	716	573	1808817.320	345094.497	Non-Participating	0-1000ft
R34	9620	1400	455	364	1808729.421	345624.323	Non-Participating	0-1000ft
R35	9440	883	508	318	1808071.048	346370.747	Non-Participating	0-1000ft
R36	8913	1402	1133	957	1808147.040	347014.427	Non-Participating	0-1000ft
R37	11251	1294	535	474	1805068.188	347023.534	Non-Participating	0-1000ft
R38	8625	1844	1075	878	1807975.210	347596.526	Non-Participating	0-1000ft
R39	8219	1035	347	256	1807744.617	348498.518	Non-Participating	0-1000ft
R40	8581	1077	395	314	1807410.636	348340.591	Non-Participating	0-1000ft
R41	8702	1062	437	320	1807290.844	348298.924	Non-Participating	0-1000ft
R42	8800	1051	438	316	1807188.414	348272.882	Non-Participating	0-1000ft
R43	9072	1083	378	308	1806908.900	348194.757	Non-Participating	0-1000ft
R44	9343	1186	460	307	1806634.089	348112.808	Non-Participating	0-1000ft
R45	9752	891	471	340	1805950.550	348411.797	Non-Participating	0-1000ft
R46	9712	753	314	177	1805903.032	348569.480	Non-Participating	0-1000ft
R47	10854	1513	899	703	1805010.825	347837.041	Non-Participating	0-1000ft
R48	11408	1899	1180	946	1804466.192	347666.980	Non-Participating	0-1000ft
R49	11248	1655	960	905	1803820.021	349350.498	Non-Participating	0-1000ft
R50	11288	1897	1048	993	1803631.953	349738.873	Non-Participating	0-1000ft

R51	11233	1941	1043	953	1803634.001	349903.182	Non-Participating	0-1000ft
R52	7917	1318	407	340	1806812.499	350857.371	Non-Participating	0-1000ft
R53	7699	1154	362	319	1806988.413	351015.535	Non-Participating	0-1000ft
R54	8027	654	489	429	1806449.198	351728.673	Non-Participating	0-1000ft
R55	8196	903	684	594	1806134.218	352598.495	Non-Participating	0-1000ft
R56	6182	823	277	211	1808145.656	352735.125	Non-Participating	0-1000ft
R57	3533	755	345	244	1812481.874	357599.102	Non-Participating	0-1000ft
R58	3727	1245	349	216	1811906.353	357431.134	Non-Participating	0-1000ft
R59	4535	1307	285	211	1811522.888	358158.219	Non-Participating	0-1000ft
R60	8086	1052	1033	979	1806701.712	357373.988	Non-Participating	0-1000ft
R61	11210	2467	830	773	1804331.232	359719.730	Non-Participating	0-1000ft
R62	11009	1967	407	365	1804773.486	360106.632	Non-Participating	0-1000ft
R63	12790	2175	917	867	1807223.591	365224.695	Non-Participating	0-1000ft
R64	12487	1867	616	574	1807340.186	364939.027	Non-Participating	0-1000ft
R65	12484	1885	618	559	1807467.737	365019.048	Non-Participating	0-1000ft
R66	12260	1700	448	377	1807713.846	364910.585	Non-Participating	0-1000ft
R67	12151	1612	388	321	1807819.194	364848.169	Non-Participating	0-1000ft
R68	12057	1548	375	320	1807927.953	364805.888	Non-Participating	0-1000ft
R69	11906	1449	409	333	1808088.550	364727.754	Non-Participating	0-1000ft
R70	11765	1364	485	405	1808226.347	364646.383	Non-Participating	0-1000ft
R71	11606	1136	380	316	1808157.634	364417.921	Non-Participating	0-1000ft
R72	11320	1013	528	323	1808460.722	364267.693	Non-Participating	0-1000ft
R73	11383	1155	675	464	1808547.295	364392.196	Non-Participating	0-1000ft
R74	12465	2071	922	862	1808036.838	365347.277	Non-Participating	0-1000ft
R75	12162	1837	808	741	1808248.773	365119.176	Non-Participating	0-1000ft
R76	12049	1751	788	715	1808323.340	365031.204	Non-Participating	0-1000ft
R77	11486	1528	1064	840	1808847.265	364677.940	Non-Participating	0-1000ft
R78	9541	1270	992	884	1808323.266	362010.527	Non-Participating	0-1000ft
R79	6133	2196	743	697	1811479.385	360014.221	Non-Participating	0-1000ft
R80	3943	1529	537	340	1814358.176	358502.748	Non-Participating	0-1000ft
R81	3722	1739	396	348	1814584.738	358281.394	Non-Participating	0-1000ft
R82	3860	2005	676	608	1814846.457	358419.415	Non-Participating	0-1000ft
R83	3935	2308	956	873	1815144.634	358489.727	Non-Participating	0-1000ft
R84	4014	2375	1046	966	1815203.289	358565.331	Non-Participating	0-1000ft
R85	3165	2028	461	324	1814798.280	357724.102	Non-Participating	0-1000ft
R86	3395	3054	1113	928	1815867.954	357829.678	Non-Participating	0-1000ft
R87	2692	2915	859	810	1815889.238	357085.030	Non-Participating	0-1000ft
R88	925	1958	1708	643	1815881.582	354479.907	Non-Participating	0-1000ft
R89	893	2016	1557	474	1815849.872	354119.097	Non-Participating	0-1000ft
R90	1397	1573	599	445	1816253.686	353074.353	Non-Participating	0-1000ft
R91	790	1626	578	322	1815593.530	353073.051	Non-Participating	0-1000ft
R92	903	1389	431	356	1815494.571	352785.290	Non-Participating	0-1000ft
R93	1511	847	373	331	1815390.405	352044.405	Non-Participating	0-1000ft
R94	1217	1262	728	619	1815039.503	352268.479	Non-Participating	0-1000ft
R95	863	1713	630	577	1814739.868	352616.121	Non-Participating	0-1000ft
R96	1249	2228	366	299	1813955.792	352273.798	Non-Participating	0-1000ft
R97	1879	1680	593	489	1814370.873	351600.394	Non-Participating	0-1000ft
R98	1971	1119	414	363	1814929.467	351507.947	Non-Participating	0-1000ft
R99	3040	1904	370	320	1814471.304	350439.469	Non-Participating	0-1000ft
R100	3546	2501	983	680	1814100.162	349937.950	Non-Participating	0-1000ft
R101	3817	2510	1080	336	1814344.874	349662.564	Non-Participating	0-1000ft
R102	5481	3946	2699	341	1814238.868	347998.798	Non-Participating	0-1000ft
R103	4145	3100	268	222	1818969.393	352607.829	Non-Participating	0-1000ft

R104	5633	1587	317	248	1819847.170	350755.349	Non-Participating	0-1000ft
R105	6264	791	260	208	1820116.213	349985.834	Non-Participating	0-1000ft
R106	6403	653	286	228	1820189.544	349846.669	Non-Participating	0-1000ft
R107	6649	919	325	204	1820641.929	350098.368	Non-Participating	0-1000ft
R109	7780	577	401	283	1822584.587	351802.035	Non-Participating	0-1000ft
R111	8968	2207	562	486	1823854.956	352757.291	Non-Participating	0-1000ft
R112	8791	2394	370	315	1823703.509	353228.393	Non-Participating	0-1000ft
R113	9290	2886	906	850	1824217.499	353398.662	Non-Participating	0-1000ft
R114	9252	3204	981	926	1824204.478	353869.148	Non-Participating	0-1000ft
R115	9357	3528	1051	925	1824313.853	354205.086	Non-Participating	0-1000ft
R116	9397	3665	1093	941	1824353.914	354350.927	Non-Participating	0-1000ft
R117	7302	742	367	317	1821835.844	357006.518	Non-Participating	0-1000ft
R118	7418	964	540	370	1822009.074	356857.646	Non-Participating	0-1000ft
R119	8089	1354	731	610	1822704.701	356883.987	Non-Participating	0-1000ft
R120	8189	834	442	344	1822626.859	357427.525	Non-Participating	0-1000ft
R121	8462	767	647	556	1822814.718	357699.050	Non-Participating	0-1000ft
R122	9076	1323	864	691	1823450.353	357757.056	Non-Participating	0-1000ft
R123	9802	1798	955	902	1823964.242	358425.458	Non-Participating	0-1000ft
R124	11791	1349	771	710	1825523.213	359791.641	Non-Participating	0-1000ft
R125	12165	1328	419	329	1825501.802	360624.176	Non-Participating	0-1000ft
R126	9498	1435	451	397	1823488.547	358732.750	Non-Participating	0-1000ft
R127	9675	1425	531	413	1823589.242	358927.194	Non-Participating	0-1000ft
R128	9665	1351	453	332	1823512.853	359053.931	Non-Participating	0-1000ft
R129	9606	1286	306	244	1823320.145	359284.833	Non-Participating	0-1000ft
R130	9556	1313	477	374	1822997.228	359722.333	Non-Participating	0-1000ft
R131	9125	1394	395	246	1822660.422	359449.764	Non-Participating	0-1000ft
R132	8889	1642	507	404	1822149.765	359781.583	Non-Participating	0-1000ft
R133	9979	1260	387	335	1822987.293	360482.013	Non-Participating	0-1000ft
R134	9063	1794	889	793	1820963.266	361346.500	Non-Participating	0-1000ft
R135	8745	1587	919	876	1820158.686	361588.653	Non-Participating	0-1000ft
R136	11544	1683	918	685	1822868.364	362965.127	Non-Participating	0-1000ft
R137	12411	1301	587	472	1823621.402	363444.728	Non-Participating	0-1000ft
R138	13066	896	296	237	1824033.728	363956.880	Non-Participating	0-1000ft
R140	14719	2040	1212	1170	1815574.515	338774.968	Non-Participating	1000-1500ft
R141	14365	1800	1112	1038	1815264.629	339118.456	Non-Participating	1000-1500ft
R142	12957	1973	1458	1362	1813939.184	340527.254	Non-Participating	1000-1500ft
R143	16429	2417	1368	1241	1815801.656	337073.892	Non-Participating	1000-1500ft
R144	18225	1773	1460	1400	1803923.395	338484.327	Non-Participating	1000-1500ft
R145	14821	2007	1301	1228	1807343.099	340383.697	Non-Participating	1000-1500ft
R147	12715	1861	1190	1086	1806658.009	343303.919	Non-Participating	1000-1500ft
R148	12912	1787	1185	1117	1806477.888	343193.242	Non-Participating	1000-1500ft
R149	12943	2001	1396	1313	1806629.798	343041.333	Non-Participating	1000-1500ft
R150	13555	1823	1445	1357	1805989.607	342757.044	Non-Participating	1000-1500ft
R151	13755	1378	1188	1052	1805364.607	343006.610	Non-Participating	1000-1500ft
R152	14387	1467	1342	1256	1804228.992	343188.052	Non-Participating	1000-1500ft
R153	14601	1668	1566	1476	1803883.471	343229.670	Non-Participating	1000-1500ft
R154	12154	2279	1422	1363	1803962.986	347058.838	Non-Participating	1000-1500ft
R155	11713	1981	1363	1291	1803558.870	348768.042	Non-Participating	1000-1500ft
R156	11769	2085	1440	1394	1803410.892	348971.660	Non-Participating	1000-1500ft
R157	10635	2459	1428	1275	1803900.892	351173.739	Non-Participating	1000-1500ft
R157	8827	1715	1225	1018	1807765.001	347526.504	Non-Participating	1000-1500ft
R158	10532	2569	1536	1411	1803965.738	351363.437	Non-Participating	1000-1500ft
R159	10197	2491	1466	1408	1804285.127	351472.803	Non-Participating	1000-1500ft

R160	8959	1790	1521	1415	1805337.174	352986.512	Non-Participating	1000-1500ft
R161	8503	1721	1294	1212	1805779.479	353453.013	Non-Participating	1000-1500ft
R162	7642	2137	1397	1248	1806640.921	354293.163	Non-Participating	1000-1500ft
R163	4173	2186	1284	1155	1810806.613	356868.654	Non-Participating	1000-1500ft
R164	11942	2700	1335	1281	1804072.201	360753.466	Non-Participating	1000-1500ft
R165	11795	2594	1186	1131	1804158.339	360610.225	Non-Participating	1000-1500ft
R166	13119	2490	1254	1212	1806908.536	365409.343	Non-Participating	1000-1500ft
R167	13288	2655	1427	1386	1806780.152	365526.878	Non-Participating	1000-1500ft
R168	13218	2754	1515	1444	1807617.079	365973.526	Non-Participating	1000-1500ft
R169	9380	1236	1087	1015	1808970.540	362290.544	Non-Participating	1000-1500ft
R170	9183	1437	1252	1200	1808953.801	362038.314	Non-Participating	1000-1500ft
R171	8984	1646	1446	1402	1808990.537	361819.083	Non-Participating	1000-1500ft
R172	7356	2149	1519	1443	1810025.075	360558.203	Non-Participating	1000-1500ft
R172	6912	2393	1484	1461	1810659.153	360445.409	Non-Participating	1000-1500ft
R173	6834	2395	1404	1382	1810722.802	360393.333	Non-Participating	1000-1500ft
R174	5602	2145	1312	1194	1813897.760	360148.563	Non-Participating	1000-1500ft
R175	4944	2260	1589	1413	1814745.737	359503.687	Non-Participating	1000-1500ft
R176	4739	2224	1415	1256	1814822.406	359298.273	Non-Participating	1000-1500ft
R177	4632	2314	1376	1242	1814972.850	359191.226	Non-Participating	1000-1500ft
R178	4431	2334	1253	1150	1815069.481	358988.473	Non-Participating	1000-1500ft
R179	4302	2376	1201	1126	1815150.952	358857.008	Non-Participating	1000-1500ft
R180	4361	2678	1444	1369	1815453.114	358891.784	Non-Participating	1000-1500ft
R181	4235	2752	1444	1360	1815557.267	358751.466	Non-Participating	1000-1500ft
R182	4196	2639	1339	1257	1815446.802	358726.995	Non-Participating	1000-1500ft
R183	4145	2572	1263	1182	1815386.038	358681.856	Non-Participating	1000-1500ft
R184	4101	2509	1194	1113	1815328.708	358642.973	Non-Participating	1000-1500ft
R185	4054	2435	1114	1033	1815259.272	358602.468	Non-Participating	1000-1500ft
R186	2661	3104	1188	1124	1816233.543	356893.517	Non-Participating	1000-1500ft
R187	2383	2866	1124	1048	1816159.044	356616.316	Non-Participating	1000-1500ft
R188	2172	2712	1179	1092	1816154.704	356370.398	Non-Participating	1000-1500ft
R189	1752	2444	1455	1357	1816159.044	355833.717	Non-Participating	1000-1500ft
R190	1317	2133	1652	1141	1816004.920	355356.335	Non-Participating	1000-1500ft
R191	2954	1843	1478	1420	1817674.290	352419.355	Non-Participating	1000-1500ft
R192	8419	1859	1203	1136	1819851.144	361409.464	Non-Participating	1000-1500ft
R193	8336	1912	1317	1201	1819446.755	361583.143	Non-Participating	1000-1500ft
R194	8242	2020	1446	1321	1819286.942	361572.138	Non-Participating	1000-1500ft
R195	8059	2196	1606	1488	1819229.477	361392.798	Non-Participating	1000-1500ft
R196	13540	1814	1283	1170	1823600.081	364981.549	Non-Participating	1000-1500ft
R197	14811	2161	1366	1255	1824547.549	365845.294	Non-Participating	1000-1500ft
R198	9683	1902	1250	1116	1824063.483	357850.545	Non-Participating	1000-1500ft
R199	9411	3436	1110	1026	1824366.890	354035.224	Non-Participating	1000-1500ft
R200	9424	3231	1172	1118	1824372.359	353741.387	Non-Participating	1000-1500ft
R201	9583	3268	1266	1211	1824526.633	353624.792	Non-Participating	1000-1500ft
R202	8222	2211	1428	1327	1819957.827	346983.984	Non-Participating	1000-1500ft
R203	6965	2865	2447	1091	1817219.112	346905.859	Non-Participating	1000-1500ft
R204	7403	3295	2866	1495	1817158.348	346424.088	Non-Participating	1000-1500ft
R205	6829	3792	3416	1016	1816050.709	346745.269	Non-Participating	1000-1500ft
R206	7739	609	379	231	1822494.957	351908.546	Non-Participating	1000-1500ft
R207	6589	4928	3769	1194	1814318.148	346890.831	Non-Participating	1000-1500ft
R208	7576	5276	4611	1824	1814821.890	345903.776	Non-Participating	1500-2000ft
R209	7712	4390	3979	1904	1816092.376	345857.248	Non-Participating	1500-2000ft
R210	7562	3587	3159	1656	1816967.376	346200.564	Non-Participating	1500-2000ft
R211	7469	3131	2696	1595	1817436.126	346447.960	Non-Participating	1500-2000ft

R212	7515	2865	2383	1750	1817828.921	346552.127	Non-Participating	1500-2000ft
R213	7523	2795	2295	1798	1817930.918	346586.849	Non-Participating	1500-2000ft
R214	7522	2634	2100	1896	1818139.251	346682.335	Non-Participating	1500-2000ft
R215	9145	3045	2047	1976	1820388.638	346152.587	Non-Participating	1500-2000ft
R216	7629	3457	3024	1720	1817208.262	346202.734	Non-Participating	1500-2000ft
R217	4442	2977	1704	1622	1815750.871	358929.773	Non-Participating	1500-2000ft
R218	4414	2946	1669	1587	1815724.829	358906.336	Non-Participating	1500-2000ft
R219	12340	3057	1735	1681	1803760.984	361007.269	Non-Participating	1500-2000ft
R220	12418	3191	1809	1755	1803597.789	360887.477	Non-Participating	1500-2000ft
R221	11043	2311	1973	1763	1810014.456	364743.814	Non-Participating	1500-2000ft
R222	7982	2271	1675	1560	1819207.255	361315.020	Non-Participating	1500-2000ft
R223	10235	1690	1578	1554	1819100.172	363917.659	Non-Participating	1500-2000ft
R224	17629	2918	1986	1893	1828035.141	366380.927	Non-Participating	1500-2000ft
R225	10041	2577	1761	1715	1804379.428	351823.177	Non-Participating	1500-2000ft
R226	9951	2485	1643	1596	1804486.198	351730.729	Non-Participating	1500-2000ft
R227	10937	2703	1934	1810	1809136.308	343829.093	Non-Participating	1500-2000ft
R228	12883	2483	1821	1717	1807063.825	342809.128	Non-Participating	1500-2000ft
R229	13871	2421	1916	1876	1808233.724	340996.545	Non-Participating	1500-2000ft
R230	3622	4034	1611	1563	1818577.061	354671.981	Non-Participating	1500-2000ft
R231	10951	1909	1565	1527	1819363.932	364584.088	Non-Participating	1500-2000ft
R232	12455	3178	1847	1793	1803641.510	361031.237	Non-Participating	1500-2000ft
R233	6114	3034	1788	1704	1808210.833	355274.145	Non-Participating	1500-2000ft
R234	8874	2471	1993	1900	1805408.431	354120.766	Non-Participating	1500-2000ft
R235	9279	1951	1778	1681	1805040.045	352651.638	Non-Participating	1500-2000ft
R236	9187	1887	1693	1594	1805127.151	352723.258	Non-Participating	1500-2000ft
R237	9662	2230	2087	1987	1804703.235	352217.076	Non-Participating	1500-2000ft
R238	9766	2304	1798	1730	1804642.261	351918.980	Non-Participating	1500-2000ft
R239	10309	2692	1664	1594	1804141.886	351623.787	Non-Participating	1500-2000ft
R240	10427	2642	1609	1512	1804044.133	351505.710	Non-Participating	1500-2000ft
R241	12067	2331	1702	1607	1803235.015	348624.436	Non-Participating	1500-2000ft
R242	18493	2009	1650	1583	1803829.030	338224.219	Non-Participating	1500-2000ft
R243	13846	2558	1824	1758	1815864.808	339665.485	Non-Participating	1500-2000ft
R244	7612	2640	2038	1927	1818999.360	361008.962	Non-Participating	1500-2000ft
R245	4502	2920	1686	1609	1815674.146	359004.027	Non-Participating	1500-2000ft
R246	13452	2735	1602	1562	1806613.796	365611.864	Non-Participating	1500-2000ft
R246	4532	2987	1749	1671	1815738.731	359023.580	Non-Participating	1500-2000ft
R247	4590	3067	1833	1755	1815809.241	359069.797	Non-Participating	1500-2000ft
R248	4722	3190	1979	1902	1815904.636	359185.338	Non-Participating	1500-2000ft
R249	4745	3262	2042	1963	1815977.516	359193.040	Non-Participating	1500-2000ft
R250	4625	3269	2001	1880	1816020.288	359060.687	Non-Participating	1500-2000ft
R251	4548	3128	1863	1769	1815886.972	359011.619	Non-Participating	1500-2000ft
R252	4356	2880	1594	1512	1815667.555	358857.008	Non-Participating	1500-2000ft
R253	4976	2623	1760	1623	1815150.779	359531.172	Non-Participating	1500-2000ft
R254	7984	2497	1840	1660	1809633.123	361049.327	Non-Participating	1500-2000ft
R255	8409	2220	2022	1863	1809310.016	361340.031	Non-Participating	1500-2000ft
R257	13724	2849	1901	1861	1806281.083	365709.508	Non-Participating	1500-2000ft

Hummingbird Energy LLC
Supplemental Responses to Siting Board Staff's First Request for Information
Case No. 2022-00272

Request No. 14:

Provide a detailed table listing all non-residential structures located within 2,000 feet of the Project boundary line. For each structure, provide: a description of the structure (barn, commercial building, warehouse, church, etc.); the distance to the boundary line; the distance to the closest solar panel; the distance to the nearest inverter; and the distance to the substation.

Original Response:

See Hummingbird's Response No. 13.

Supplemental Response:

Please see attached.

Responding Witness: Adam Peterson, Chad Martin

Response to Comments #14. Non-Residential Structures located within 2000 Feet of the Project

Structure ID	Structure Type	Distance to Substation (ft)	Distance to Inverter (ft)	Distance to Panel (ft)	Distance to Boundary (ft)	X (KY State Plane North)	Y (KY State Plane North)
0	barn	12436	1811	629	587	1807018.838	364653.506
1	barn	12620	1886	828	781	1806838.016	364749.342
2	barn	12713	1976	912	869	1806809.084	364843.370
3	shed	12390	1780	518	468	1807447.387	364894.000
4	shed	12330	1746	480	414	1807597.822	364920.325
5	shed	12359	1785	522	454	1807625.967	364972.170
6	garage	11976	1492	381	313	1808011.845	364762.567
7	barn	11485	1054	479	393	1808256.675	364336.416
8	shed	11392	996	510	316	1808330.740	364272.767
9	shed	11428	977	466	326	1808240.473	364260.037
10	barn	9379	1249	1124	1040	1809063.577	362352.000
11	barn	9615	1283	993	853	1808184.057	361993.248
12	barn	9222	1443	1347	1253	1809309.495	362325.961
13	shed	11177	1669	1275	1054	1809296.063	364562.538
14	shed	11192	1754	1362	1142	1809366.976	364614.111
15	barn	11165	2398	2043	1829	1810015.594	364877.118
16	shed	9073	1545	1365	1311	1809045.234	361967.731
17	business	8524	2153	1916	1752	1809049.863	361288.186
18	storage building	8547	2080	1883	1839	1809243.357	361463.164
19	garage	8466	2153	1967	1918	1809360.837	361447.218
20	garage	7910	2511	1855	1693	1809745.147	361038.217
21	garage	8029	2586	1939	1762	1809682.191	361140.056
22	barn	7246	2017	1394	1330	1810016.187	360416.591
23	store	4411	2774	1538	1462	1815542.802	358930.842
24	furniture store	4471	3024	1752	1670	1815794.391	358951.441
25	barn	8286	1358	1352	1295	1806423.933	357187.353
26	shed	11045	2079	485	443	1804672.216	360003.660
27	barn	3314	844	452	402	1812638.072	357436.526
28	garage	4128	2125	1232	1099	1810868.907	356881.040
29	barn	3319	1033	818	658	1811993.014	356961.875
30	shed	3742	1345	403	209	1811820.755	357377.216
31	barn	3127	894	805	699	1812098.498	356797.138
32	barn	3937	2966	1462	1224	1815809.176	358402.535
33	garage	3189	3052	1049	907	1815908.786	357602.883
34	shed	3127	3136	1132	1018	1816027.858	357497.011
35	barn	2901	3320	1283	1235	1816312.653	357124.065
36	barn	2574	3115	1397	1325	1816438.234	356664.053
37	barn	793	1801	1633	584	1815744.193	354654.710
38	barn	1151	1146	463	410	1815331.692	352405.733
39	barn	1541	1543	640	542	1816388.372	353021.659
40	barn	2277	1246	96	56	1814840.081	351202.134
41	barn	1723	1439	652	538	1814631.005	351755.903
42	barn	5603	1404	205	161	1819710.756	350580.106
43	barn	8495	678	609	523	1822940.349	350688.770
44	garage	8387	1009	955	914	1823011.452	351283.510
45	barn	8817	2058	430	360	1823700.995	352716.664
46	barn	6449	1364	1000	952	1821171.728	356278.395
47	barn	8993	1349	982	811	1823420.665	357598.724
48	barn	10009	2245	1552	1437	1824409.537	357850.180
49	barn	7711	996	338	214	1822249.140	357065.334
50	barn	7191	806	410	333	1821759.617	356890.587
51	barn	8681	1464	1097	982	1823248.318	357129.716
52	barn	8095	1111	530	407	1822635.665	357119.725
53	barn	7976	2270	1660	1552	1819291.176	361254.116
54	greenhouse	7876	2373	1772	1660	1819173.413	361211.899
55	greenhouse	8059	2193	1600	1484	1819249.751	361379.849
56	barn	8304	1951	1310	1224	1819674.230	361393.497
57	barn	8427	1845	1291	1157	1819347.882	361752.248
58	barn	9303	1592	651	570	1821108.485	361537.313
59	barn	11765	1671	918	876	1822858.274	363276.099
60	barn	13435	781	279	134	1824298.219	364215.446
61	barn	12199	1717	276	209	1824614.100	362011.725
62	barn	12450	1606	686	601	1825742.622	360777.344
63	barn	8388	1893	991	828	1808283.611	347616.925
64	barn	8921	1486	1185	1101	1807907.437	347238.861
65	barn	14629	2119	1461	1389	1807440.121	340548.650
66	barn	13690	2566	1818	1760	1815797.446	339818.017
67	barn	14381	1565	870	796	1815023.294	339098.591
68	barn	17463	2403	1806	1732	1814993.330	336016.373
69	barn	16976	2160	1386	1307	1815163.794	336504.747

70	barn	16939	1868	1255	1182	1814787.719	336540.371
71	barn	16075	1479	479	381	1814924.429	337404.698
72	barn	15910	1566	483	354	1815066.203	337570.101
73	barn	18542	2080	1347	1302	1806220.088	336781.483
74	barn	18121	1600	1227	1161	1804204.674	338418.998
75	greenhouse	15578	1398	936	728	1806739.218	339849.593
76	greenhouse	15580	1486	938	734	1806840.539	339792.127
77	shed	15729	1525	751	632	1806901.029	339589.485
78	barn	14216	1405	1251	1143	1804630.647	343041.908
79	garage	14606	1672	1563	1474	1803933.799	343172.567
80	garage	10541	2645	1612	1490	1803940.574	351438.929
81	garage	10191	2420	1394	1335	1804305.451	351403.118
82	garage	10034	2568	1623	1577	1804409.979	351687.665
83	barn	9474	2049	1944	1883	1804886.158	352268.371
84	barn	9411	1972	1882	1831	1804960.682	352184.169
85	barn	8841	1849	1513	1403	1805443.637	353272.026
86	barn	8274	1488	1041	966	1806009.826	353343.647
87	garage	8661	2486	1944	1828	1805621.660	354288.626
88	garage	7711	2113	1386	1238	1806571.357	354258.381
89	barn	3719	2819	1292	754	1813811.622	349790.689
90	barn	6186	2943	1687	1622	1808125.769	355160.726
91	barn	4976	2330	1790	1712	1809628.575	356320.911
92	barn	4362	2214	1297	1197	1810671.050	357005.382
93	store	3876	1141	479	347	1813978.207	358423.399
94	store	3747	1038	398	342	1813884.210	358285.462
95	store	3872	1043	506	409	1813880.339	358410.314
96	shed	4969	1911	1309	1189	1814292.641	359528.175
97	barn	5916	2338	1458	1353	1813716.773	360448.050
98	barn	6669	2644	1245	1208	1811068.811	360402.683
99	barn	6612	2686	1195	1155	1811165.595	360390.585
100	barn	6803	2639	1377	1342	1810967.489	360499.467
101	barn	12043	2799	1435	1381	1803979.288	360795.083
102	barn	11783	2564	1174	1120	1804193.181	360645.067
103	barn	11161	2009	552	498	1804723.379	360319.509
104	shed	11182	2127	582	539	1804608.447	360166.771
105	barn	11410	2141	1643	1598	1819561.802	364998.755
106	barn	12371	2544	1820	1773	1820416.409	365659.793
107	barn	13593	1689	1173	1051	1823734.288	364938.534
108	barn	14990	2206	1394	1272	1824727.264	365927.047
109	barn	9779	2490	2046	1875	1824416.834	357035.222
110	barn	4707	3603	520	467	1819663.641	354467.745
111	barn	3986	3084	372	323	1818851.727	352843.916
112	barn	5100	3548	2298	135	1814370.714	348379.356
113	barn	6804	5119	3973	1324	1814353.857	346675.036
114	garage	7704	5346	4735	1947	1814835.915	345775.758
115	barn	7390	5162	4428	1643	1814823.229	346089.378
116	shed	15434	447	7	237	1811699.078	338263.470
117	barn	15542	313	3	401	1811803.618	338136.529
118	barn	15625	246	2	424	1811934.292	338031.989
119	barn	15625	337	0	340	1812083.635	338009.588
120	barn	15715	387	6	205	1812180.707	337905.048
121	shed	15244	358	7	498	1813356.779	338263.470
122	shed	15345	236	5	567	1813420.250	338158.931
123	barn	14133	977	336	278	1812990.890	339405.940
124	garage	14003	981	448	395	1813203.703	339517.947
125	shed	15349	524	4	204	1811723.238	338344.838
126	garage	13725	2637	1894	1833	1815893.014	339789.461
127	garage	14224	1657	939	864	1815061.181	339256.505
128	garage	15185	2042	984	918	1815567.048	338308.273
129	shed	17439	1644	821	735	1812020.164	336187.610
130	barn	18297	1785	912	773	1810334.722	335613.515
131	barn	20272	2525	1955	1797	1808153.646	334155.876
132	barn	20425	2675	2045	1943	1808026.910	334036.085
133	barn	17996	257	1	244	1808674.045	336379.401
134	barn	17319	418	34	20	1808965.712	336996.588
135	barn	17337	447	18	86	1809150.608	336919.765
136	barn	16917	547	106	0	1808771.473	337485.595
137	barn	16765	704	146	75	1808903.646	337600.321
138	barn	16739	456	181	61	1808434.896	337794.765
139	barn	16711	501	176	74	1808530.382	337789.557
140	barn	16173	461	0	419	1809068.577	338169.765
141	barn	16762	649	214	128	1807927.619	337968.936

142	barn	16806	954	75	3	1807346.894	338171.496
143	garage	17557	1521	730	569	1805843.750	338082.960
144	animal pen	17538	1796	885	652	1806181.424	337924.973
145	barn	17715	1869	1007	789	1806057.292	337789.557
146	shed	17653	1920	1004	787	1806189.236	337790.425
147	garage	17280	947	369	311	1805508.681	338592.769
148	barn	17423	979	391	350	1805293.837	338553.706
149	barn	17232	871	292	238	1805480.469	338665.468
150	shed	17585	1763	880	657	1806091.580	337918.854
151	shed	17598	1751	878	660	1806062.283	337918.854
152	shed	16654	1313	312	233	1806454.102	338779.748
153	shed	15750	1456	813	587	1806831.056	339603.073
154	shed	15914	1472	696	490	1806843.674	339411.145
155	barn	15256	1594	824	751	1807327.474	339901.058
156	barn	15214	1726	936	863	1807233.724	339996.545
157	shed	14953	1411	865	813	1807907.335	339953.142
158	barn	14835	1412	898	858	1808120.877	339984.392
159	barn	14788	1460	947	907	1808127.821	340033.003
160	animal pen	14544	1651	1161	1111	1808294.488	340225.711
161	barn	14145	2004	1542	1461	1808525.391	340559.045
162	shed	13797	2485	1984	1942	1808271.919	341060.781
163	shed	13801	2513	2005	1965	1808204.210	341088.558
164	shed	13044	1871	1380	1282	1813824.508	340443.720
165	garage	17772	1221	710	639	1804834.543	338426.532
166	shed	17721	1162	680	608	1804793.389	338513.268
167	shed	17734	1176	690	618	1804794.083	338496.949
168	shed	17747	1189	700	628	1804794.430	338481.671
169	shed	18048	1488	1032	959	1804509.022	338306.741
170	garage	18094	1536	1093	1020	1804438.710	338297.626
171	barn	17957	1455	1122	1062	1804244.265	338590.595
172	shed	18002	1462	1067	1000	1804366.205	338454.591
173	shed	17895	1475	1223	1175	1804092.356	338768.619
174	barn	17270	1513	1388	1267	1803852.599	339714.452
175	barn	16425	131	1	184	1805486.279	339608.549
176	garage	13615	1843	1485	1389	1805948.374	342713.642
177	shed	13646	1372	1153	1020	1805492.645	343041.333
178	shed	13802	1487	1290	1155	1805412.350	342904.614
179	barn	13858	1526	1335	1200	1805379.798	342859.041
180	shed	13863	1452	1272	1134	1805297.332	342921.975
181	barn	14035	1564	1394	1253	1805175.805	342800.447
182	shed	13297	925	684	552	1805483.964	343510.083
183	barn	13120	713	448	315	1805483.964	343746.628
184	barn	12599	995	307	248	1806035.180	343954.961
185	garage	12853	1302	718	672	1806135.006	343538.294
186	shed	12296	1310	428	329	1806397.593	344043.937
187	garage	12985	1819	1236	1178	1806454.016	343119.458
188	shed	12710	1510	861	775	1806382.402	343523.103
189	garage	12934	2551	1900	1796	1807087.697	342731.003
190	garage	12252	2297	1446	1345	1807237.437	343455.829
191	barn	12183	2834	2059	1854	1807931.881	343082.565
192	barn	12189	2910	2146	1941	1808016.516	343023.972
193	garage	12285	1759	903	807	1806777.367	343753.138
194	shed	11918	1598	623	568	1806723.114	344265.291
195	shed	11660	1418	528	416	1806792.558	344543.069
196	shed	9954	1144	185	45	1808413.652	345439.336
197	barn	10056	1195	283	167	1808413.652	345313.468
198	warehouse	9834	1556	588	446	1808806.447	345311.298
199	garage	10032	1789	854	711	1808919.294	345000.968
200	garage	9917	1926	971	827	1809088.565	345031.350
201	shed	10849	2699	1907	1779	1809201.412	343894.197
202	barn	10246	2973	2050	1907	1809845.944	344243.590
203	shed	8956	1424	1128	1038	1807938.391	347158.086
204	shed	9041	1260	955	759	1808170.596	346817.374
205	greenhouse	8413	1896	1237	1111	1808500.457	347368.590
206	barn	8225	1778	1057	962	1808582.923	347548.711
207	barn	8583	1772	1205	1034	1808216.169	347407.652
208	garage	8574	1847	1081	894	1808081.621	347557.392
209	barn	8736	1629	1321	1139	1808098.982	347307.826
210	barn	9044	1363	1061	980	1807838.565	347134.215
211	barn	9175	1233	929	851	1807762.610	347023.538
212	shed	8963	1503	1195	1125	1807790.822	347299.145
213	shed	8671	1671	1315	1142	1808200.978	347299.145

214	barn	9635	668	456	277	1807836.395	346318.242
215	garage	9530	796	443	255	1808010.006	346305.222
216	shed	9559	758	452	264	1807960.093	346309.562
217	barn	7214	1467	1299	1217	1809967.905	347697.583
218	silo	14120	1314	1158	1048	1804690.128	343117.722
219	barn	14393	1603	1448	1338	1804577.280	342850.360
220	garage	14381	1482	1347	1264	1804318.600	343109.041
221	barn	14359	1466	1329	1245	1804356.794	343103.833
222	shed	13987	1065	941	854	1804474.850	343506.610
223	shed	13984	1052	939	851	1804410.614	343574.319
224	shed	13652	720	635	544	1804552.975	343902.444
225	shed	13848	915	805	716	1804493.947	343683.694
226	barn	13722	798	723	634	1804454.016	343904.180
227	barn	13765	831	731	641	1804511.308	343784.388
228	shed	12239	2329	1472	1415	1803891.806	347011.963
229	barn	13092	2671	1978	1906	1803306.736	346343.561
230	shed	12047	2217	1362	1301	1804053.264	347116.130
231	lumber shed	12433	2709	1984	1792	1803285.903	347678.630
232	lumber warehouse	12549	2824	2100	1908	1803181.736	347626.547
233	lumber shed	12289	2539	1834	1660	1803308.472	347949.463
234	lumber shed	12461	2704	2012	1847	1803101.875	347977.241
235	lumber shed	12198	2438	1766	1619	1803273.750	348225.505
236	shed	11988	2244	1532	1356	1803598.403	348043.213
237	shed	12093	2379	1649	1453	1803603.611	347805.366
238	shed	12058	2324	1604	1419	1803572.361	347940.783
239	barn	11947	2271	1531	1321	1803808.472	347732.450
240	barn	11560	1860	1123	921	1804081.042	348043.213
241	barn	11044	1726	1091	878	1804903.959	347647.380
242	garage	10901	1579	964	764	1804994.236	347772.380
243	shed	11270	1443	680	617	1804966.893	347135.661
244	shed	11367	1363	559	494	1804953.872	346984.620
245	garage	10256	1496	1192	1042	1805815.242	347691.423
246	shed	9535	646	246	131	1806068.238	348637.397
247	shed	9570	686	283	165	1806049.792	348600.505
248	shed	9625	663	238	110	1805959.731	348644.993
249	garage	9667	814	407	283	1806010.729	348476.807
250	barn	9900	990	541	392	1805819.757	348342.259
251	shed	9973	961	539	392	1805731.867	348345.514
252	barn	9072	622	120	57	1806548.345	348736.836
253	barn	9179	70	8	422	1806158.900	349207.108
254	garage	9493	1298	570	418	1806514.613	348022.778
255	garage	8965	1065	381	333	1807021.123	348221.996
256	garage	8750	1102	489	364	1807269.821	348246.736
257	garage	8493	1102	368	314	1807500.290	348367.830
258	barn	7862	777	182	128	1808001.592	348750.642
259	barn	7914	932	294	116	1808051.071	348600.903
260	shed	7966	842	209	134	1807924.769	348680.330
261	shed	8007	937	305	222	1807944.300	348586.580
262	shed	8075	974	335	246	1807887.009	348548.819
263	shed	8135	998	357	252	1807828.415	348526.684
264	barn	6948	753	279	222	1808746.384	349281.458
265	garage	11842	2149	1509	1462	1803354.023	348919.045
266	shed	11336	1897	1078	1033	1803612.269	349652.552
267	garage	11420	2133	1242	1148	1803434.318	349910.798
268	barn	10788	1667	662	538	1804031.106	350119.132
269	barn	10736	1543	560	455	1804118.751	350021.996
270	shed	10720	2507	1469	1314	1803815.626	351164.323
271	garage	10643	2541	1513	1361	1803874.219	351258.073
272	garage	10593	2635	1603	1470	1803896.355	351394.791
273	shed	10484	2736	1703	1599	1803973.178	351571.875
274	garage	10257	2717	1692	1631	1804185.417	351676.041
275	carport	10211	2742	1721	1666	1804223.178	351724.219
276	carport	10235	2730	1707	1650	1804203.646	351700.781
277	shed	10133	2408	1387	1335	1804361.198	351419.531
278	shed	9425	2007	1896	1831	1804930.209	352307.552
279	shed	9168	1802	1653	1565	1805164.584	352525.000
280	shed	9119	1851	1636	1535	1805189.323	352797.135
281	garage	7814	1282	306	233	1806930.209	350834.028
282	shed	7600	1162	259	216	1807092.969	351016.319
283	barn	7587	866	82	40	1807013.542	351305.382
284	shed	8089	1386	529	441	1806645.053	350813.194
285	barn	8097	773	532	471	1806405.469	351603.559

286	barn	8087	836	498	427	1806443.230	351491.580
287	shed	7968	539	479	424	1806475.782	351883.507
288	garage	8287	1013	781	685	1806036.980	352649.132
289	shed	8376	1578	1145	1064	1805906.771	353375.694
290	barn	6283	513	6	191	1808108.160	352315.364
291	shed	6274	429	1	291	1808136.806	352216.406
292	shed	6278	395	3	325	1808140.712	352177.344
293	silo	6189	370	3	189	1808261.806	352045.833
294	silo	6189	370	3	189	1808261.806	352045.833
295	silo	6188	357	6	188	1808270.921	352010.677
296	barn	6190	339	7	203	1808295.660	351907.812
297	barn	6310	219	7	297	1808178.473	351881.771
298	barn	6399	129	5	209	1808092.535	351855.729
299	shed	6362	200	3	222	1808158.941	351754.166
300	shed	6389	229	6	285	1808059.983	352031.510
301	shed	6388	269	1	317	1808049.566	352078.385
302	shed	6129	801	245	179	1808194.532	352770.226
303	barn	7553	2071	1320	1168	1806729.659	354236.675
304	shed	7513	1952	1198	1046	1806770.024	354120.790
305	shed	7584	2145	1397	1246	1806698.409	354308.290
306	shed	8777	2532	2017	1905	1805505.701	354267.925
307	barn	6394	2738	1468	1421	1807896.543	354875.781
308	barn	5928	2805	1578	1462	1808377.229	355073.264
309	barn	5852	2755	1539	1402	1808449.928	355034.201
310	silo	4931	2447	1886	1799	1809632.654	356201.302
311	barn	3665	1409	1340	1192	1810634.390	354911.154
312	barn	3980	1578	1449	1312	1810302.359	354560.677
313	barn	3617	1482	1132	1088	1810673.887	353230.599
314	barn	3437	1338	958	913	1810853.574	353242.318
315	shed	2704	836	252	205	1811581.439	353359.505
316	barn	4141	2357	1665	1520	1810630.918	356513.151
317	barn	4155	3344	1359	1009	1812919.980	349554.166
318	silo	4292	3208	1241	897	1812762.645	349465.191
319	silo	4318	3180	1217	875	1812730.093	349450.000
320	silo	4304	3121	1155	812	1812678.010	349485.807
321	barn	5564	3456	2190	1477	1812813.296	348112.630
322	barn	5347	3083	1757	1531	1812509.911	348434.245
323	shed	5499	3347	2065	1528	1812726.057	348205.078
324	shed	5449	3443	2105	1421	1812831.525	348227.213
325	barn	5542	3631	2308	1325	1812989.077	348090.495
326	shed	5032	3520	2249	216	1814306.600	348447.072
327	garage	5355	3803	2561	212	1814308.081	348123.957
328	silo	5156	3627	2368	158	1814308.081	348323.610
329	shed	6701	5034	3880	1273	1814314.946	346778.776
330	shed	6895	5189	4045	1365	1814403.487	346584.331
331	shed	7059	4478	4016	1262	1815417.376	346438.498
332	barn	7140	3785	3387	1308	1816309.824	346477.040
333	garage	6870	3889	3514	1063	1815969.980	346690.581
334	shed	6765	3843	3474	958	1815945.241	346793.446
335	shed	7836	3652	3216	1925	1817199.581	345983.550
336	shed	7534	3615	3190	1632	1816900.102	346211.415
337	shed	7451	3512	3087	1544	1816941.334	346309.071
338	barn	7554	3066	2610	1714	1817620.588	346426.258
339	garage	7057	2855	2430	1199	1817321.109	346845.095
340	barn	6778	2730	2319	924	1817197.411	347096.831
341	shed	7423	2579	2068	1797	1818076.317	346762.630
342	shed	7431	2770	2296	1691	1817844.112	346649.783
343	garage	8249	2290	1516	1414	1819905.744	346910.199
344	barn	8404	644	554	496	1822866.031	350751.996
345	barn	8581	782	713	622	1823040.727	350717.274
346	shed	8222	858	814	762	1822883.837	351447.983
347	shed	7852	621	468	357	1822585.317	351793.377
348	barn	6773	536	135	84	1820483.731	349622.087
349	barn	6603	862	173	121	1821162.550	351339.101
350	shed	6765	653	141	101	1821360.467	351418.962
351	silo	6749	636	131	83	1821370.883	351505.768
352	silo	6775	618	161	109	1821389.981	351481.462
353	silo	6825	582	122	82	1821429.911	351439.796
354	shed	4265	3117	139	92	1819097.021	352634.981
355	barn	7268	1717	1	131	1822180.378	353228.062
356	shed	7614	1807	273	217	1822527.600	353254.459
357	shed	8178	1332	264	190	1823023.052	352403.663

358	barn	8759	1872	501	456	1823620.449	352502.151
359	shed	9019	2608	611	555	1823937.290	353294.252
360	shed	9287	2847	889	833	1824210.727	353346.335
361	barn	9380	3180	1119	1066	1824327.828	353713.870
362	shed	9448	3218	1173	1119	1824395.015	353698.765
363	shed	9181	3207	897	839	1824135.119	353936.265
364	garage	9361	3425	1058	970	1824317.411	354065.953
365	garage	9299	3626	996	841	1824255.432	354379.495
366	shed	9650	3298	1318	1263	1824591.695	353593.601
367	barn	6429	1514	1147	1092	1821192.389	356123.548
368	garage	7326	1007	621	481	1821943.692	356760.701
369	shed	7358	1068	680	510	1821990.567	356717.733
370	garage	8140	777	379	281	1822563.483	357456.014
371	shed	8042	847	319	214	1822499.681	357347.941
372	garage	8743	846	503	362	1823010.098	357961.222
373	barn	8908	907	295	127	1823086.921	358199.503
374	shed	9427	1373	456	409	1823484.056	358577.108
375	barn	10058	1609	1035	854	1824167.650	358597.941
376	garage	9934	1802	1107	999	1824115.567	358406.535
377	garage	9599	1895	1309	1156	1824027.025	357700.805
378	shed	9705	1981	1361	1219	1824124.681	357743.774
379	barn	9699	2023	1432	1282	1824148.119	357656.535
380	shed	9767	2395	1927	1757	1824370.775	357160.441
381	barn	9841	2418	1917	1753	1824426.764	357234.660
382	shed	9716	2544	2145	1973	1824392.910	356873.983
383	greenhouse	11677	1308	814	752	1825443.257	359694.946
384	barn	11981	1572	936	855	1825747.945	359765.259
385	shed	12063	1632	965	875	1825820.862	359801.717
386	barn	12131	1265	405	365	1825274.768	360938.436
387	barn	12215	1355	519	479	1825302.112	361053.019
388	shed	12104	1275	505	465	1825117.216	361136.352
389	shed	12240	1389	468	384	1825529.976	360726.196
390	garage	12174	1373	497	363	1825582.060	360500.936
391	shed	9743	1411	622	420	1823677.977	358902.329
392	garage	9713	1300	487	281	1823546.903	359092.342
393	shed	9784	1229	452	210	1823600.289	359143.123
394	barn	9617	1310	329	259	1823380.237	359199.113
395	shed	9669	1242	316	224	1823399.768	359272.029
396	shed	9574	1292	300	257	1823237.007	359365.779
397	abandoned house	9524	1327	315	274	1823136.747	359437.394
398	silo	9821	1036	204	136	1823269.560	359788.956
399	silo	9837	1028	215	149	1823259.143	359834.529
400	barn	8982	1170	331	216	1822635.445	359218.644
401	shed	8876	1052	249	171	1822574.247	359115.779
402	barn	8765	973	142	88	1822472.685	359068.904
403	shed	7323	428	96	83	1821390.653	358057.186
404	garage	9236	1814	526	435	1822415.393	360006.404
405	barn	8739	1745	662	564	1821899.768	359865.779
406	shed	16550	1869	1217	1122	1827784.490	365016.995
407	shed	17312	2578	1693	1623	1828009.100	365931.708
408	shed	17236	2503	1615	1545	1827939.655	365895.901
409	shed	17133	2417	1489	1403	1827707.450	366002.238
410	barn	15186	2382	1621	1481	1824752.372	366163.262
411	barn	13261	811	228	169	1824178.153	364089.477
412	silo	13270	856	278	215	1824148.205	364129.842
413	garage	13118	829	242	171	1824105.237	363960.571
414	barn	13446	304	3	280	1824644.299	363883.748
415	shed	11849	1838	1088	988	1823028.674	363233.748
416	shed	11630	1648	900	820	1822841.174	363108.748
417	shed	11704	1694	946	886	1822886.747	363167.342
418	barn	11866	1774	967	860	1823248.726	363047.550
419	abandoned building	12021	1576	758	653	1823458.362	363057.967
420	garage	11580	1695	946	724	1822882.841	363001.977
421	barn	11651	1499	745	703	1822685.467	363278.127
422	barn	11510	2185	1658	1612	1819622.880	365080.818
423	shed	11113	1949	1540	1499	1819469.234	364715.367
424	barn	10184	1852	1748	1723	1818927.567	363936.721
425	barn	9051	2160	1962	1868	1818440.588	362913.284
426	silo	9045	2243	2050	1958	1818354.651	362941.930
427	barn	9266	996	350	277	1820198.401	362199.742
428	barn	8616	1685	1175	1028	1819359.859	361965.367
429	barn	8533	1769	1254	1109	1819302.567	361902.867

430	shed	7869	2385	1790	1675	1819130.172	361230.298
431	garage	7641	2607	2000	1892	1819057.741	361006.687
432	barn	8439	1894	1227	1182	1820023.019	361308.770
433	shed	8423	1883	1219	1166	1819944.894	361346.964
434	shed	9253	1559	720	663	1820983.088	361580.905
435	shed	9064	1700	885	835	1820863.297	361434.204
436	garage	9081	1745	875	793	1820930.137	361399.482
437	silo	9240	1731	718	598	1821171.022	361397.746
438	barn	9184	2365	427	385	1821680.571	360814.412
439	barn	9274	1982	384	323	1822237.863	360302.693
440	barn	9281	1901	393	312	1822317.290	360212.850
441	barn	10134	1430	314	251	1822924.603	360821.736
442	barn	1581	1466	595	523	1816402.251	352939.900
443	shed	905	1516	460	253	1815670.914	352980.048
444	shed	812	1695	632	286	1815664.403	353162.340
445	shed	832	1559	515	325	1815600.384	353005.005
446	barn	512	1761	821	142	1815211.495	353060.994
447	barn	671	1848	622	435	1814732.329	352808.390
448	silo	588	1882	658	349	1814768.787	352891.723
449	shed	564	1805	804	313	1814914.620	352915.161
450	shed	554	1847	749	307	1814859.933	352925.578
451	shed	670	1694	851	413	1814961.495	352810.994
452	barn	726	1643	867	466	1814977.120	352756.307
453	barn	797	1540	807	518	1815065.662	352696.411
454	shed	897	1461	772	619	1815068.266	352594.848
455	silo	846	1502	790	567	1815065.662	352646.932
456	shed	1244	1341	812	654	1814919.829	352235.473
457	barn	1648	679	212	164	1815529.204	351949.015
458	garage	1588	834	344	236	1815339.100	351949.015
459	garage	2056	1046	357	317	1815005.766	351425.578
460	barn	2091	984	344	304	1815070.870	351394.328
461	shed	2217	931	273	213	1815146.391	351274.536
462	shed	2307	991	182	115	1815112.537	351180.786
463	shed	2150	1432	233	120	1814628.162	351329.223
464	shed	2114	1140	275	234	1814917.225	351365.682
465	shed	1801	1874	773	677	1814182.850	351680.786
466	church	2604	1967	493	407	1814184.367	350877.549
467	shed	2398	2158	759	712	1813927.641	351107.869
468	silo	3171	1685	308	237	1814862.537	350308.390
469	barn	3299	1702	421	289	1814979.725	350180.786
470	barn	3444	1777	549	423	1815047.433	350037.557
471	barn	3332	2083	591	532	1814469.308	350146.932
472	shed	3108	1782	299	235	1814675.037	350370.890
473	shed	3080	1707	251	189	1814747.954	350399.536
474	shed	3103	1672	254	205	1814815.662	350376.098
475	shed	3153	1786	333	268	1814706.287	350326.619
476	shed	3098	1578	231	131	1814940.662	350381.307
477	barn	3603	2813	1280	903	1813724.950	349919.935
478	shed	3536	2707	1174	875	1813816.096	349974.189
479	shed	3583	2681	1151	784	1813888.796	349917.765
480	shed	3538	2657	1125	821	1813885.540	349963.338
481	barn	1224	2340	304	252	1813847.699	352335.647
482	shed	968	1996	1756	692	1815924.233	354505.497
483	silo	1228	2130	1875	1049	1816054.441	355109.229
484	silo	1262	1988	1425	1095	1815809.649	355489.438
485	barn	1972	2563	1243	1148	1816122.149	356149.738
486	shed	2093	2646	1180	1089	1816125.621	356295.572
487	garage	2641	2780	725	676	1815754.094	357076.822
488	shed	3334	3794	1745	1694	1816729.788	357382.377
489	barn	3206	3662	1614	1564	1816615.205	357302.516
490	barn	3517	2067	569	465	1814903.399	358076.822
491	shed	3691	1964	544	462	1814809.649	358250.433
492	barn	3660	1582	266	179	1814427.705	358219.183
493	garage	3618	1664	266	225	1814507.566	358177.516
494	garage	3990	1622	591	417	1814445.066	358549.044
495	church	4284	2208	1083	986	1814980.891	358843.332
496	shed	4454	2629	1455	1387	1815375.621	358993.488
497	shed	4401	2663	1452	1381	1815426.837	358935.329
498	shed	4314	2574	1345	1273	1815354.788	358854.600
499	garage	4448	2855	1615	1537	1815619.545	358957.898
500	garage	4546	2888	1683	1609	1815628.226	359055.120
501	garage	4278	2840	1532	1447	1815641.246	358782.551

502	abandoned store	4093	2705	1350	1250	1815530.135	358612.412
503	garage	3947	2403	1040	954	1815239.746	358496.077
504	garage	4533	3198	1912	1781	1815967.256	358977.885
505	garage	4550	3337	2028	1850	1816112.655	358960.524
506	garage	4635	3110	1884	1806	1815843.558	359109.179
507	garage	4583	3012	1790	1713	1815751.327	359073.371
508	garage	4753	3116	1939	1866	1815812.091	359235.047
509	garage	4412	2386	1273	1181	1815130.667	358968.120
510	barn	4517	2262	1270	1144	1814962.481	359076.626
511	garage	4687	2346	1430	1293	1814982.881	359246.331
512	cemetery	4910	1480	778	655	1813761.526	359441.644
513	shed	4265	1639	859	660	1814392.169	358824.022
514	barn	6328	2754	1866	1766	1813784.964	360867.859
515	store	3911	973	571	477	1813805.580	358441.644
516	store	4380	1118	737	697	1813768.688	358909.309
517	store	4312	957	623	598	1813633.054	358822.503
518	store	4238	998	726	695	1813720.945	358759.569
519	barn	5127	1467	178	146	1811473.144	358847.547
520	barn	6561	2464	1129	1106	1810983.186	360229.869
521	shed	6731	2515	1300	1275	1810908.908	360384.005
522	garage	7334	2128	1499	1426	1810027.831	360533.310
523	silos	7168	2022	1412	1357	1810099.012	360379.665
524	silos	7193	2031	1417	1360	1810081.651	360398.762
525	silos	7194	2051	1438	1381	1810099.012	360411.783
526	silos	7209	2073	1459	1402	1810105.088	360434.352
527	barn	7150	2040	1434	1380	1810132.866	360381.401
528	barn	7085	2089	1496	1446	1810237.901	360376.192
529	barn	7339	2008	1373	1290	1809911.512	360454.317
530	barn	7444	1060	275	231	1808828.179	359625.614
531	barn	8645	897	325	281	1807189.290	359500.614
532	barn	8578	941	317	246	1807092.068	359236.725
533	shed	8719	1972	1740	1684	1808911.512	361427.697
534	greenhouse	9302	1350	1249	1156	1809215.331	362359.555
535	greenhouse	9278	1371	1266	1175	1809220.540	362334.815
536	barn	9356	1337	1266	1162	1809293.456	362474.138
537	barn	10241	884	484	321	1807802.173	362488.606
538	shed	10227	785	435	271	1807902.000	362551.540
539	barn	11413	786	261	207	1807839.066	363979.491
540	barn	11266	772	314	241	1807228.171	363342.772
541	shed	9461	1342	1303	1206	1809425.394	362678.536
542	barn	9377	1444	1405	1308	1809519.144	362636.870
543	shed	9326	1517	1478	1383	1809592.060	362619.508
544	shed	11428	935	406	316	1808172.442	364216.904
545	garage	11396	1044	557	355	1808389.890	364313.258
546	barn	11619	1509	922	816	1808660.723	364727.321
547	shed	11465	1312	834	619	1808626.869	364532.008
548	barn	11585	1796	1324	1114	1809031.817	364886.609
549	garage	11611	1240	541	466	1808315.671	364519.856
550	shed	11920	1496	485	410	1808146.401	364778.102
551	shed	11836	1405	441	362	1808157.251	364686.956
552	shed	12663	1996	849	809	1806905.081	364851.887
553	shed	12886	2265	1014	967	1807128.605	365277.234
554	barn	13745	2943	1901	1861	1806390.758	365813.258
555	shed	13732	3185	1919	1853	1807130.776	366282.008
556	barn	13430	2879	1613	1547	1807245.793	365997.720
557	barn	12627	3093	2089	1983	1803783.036	361573.086
558	shed	10967	1973	384	343	1804776.609	360028.102
559	shed	11100	2023	492	445	1804712.373	360182.616
560	barn	8195	516	500	444	1806822.399	357952.147
561	barn	8075	545	542	482	1806905.732	357842.772
562	barn	8152	656	648	593	1806796.357	357785.481
563	barn	8088	704	702	639	1806830.211	357702.147
564	barn	8322	993	980	925	1806525.524	357574.543
565	barn	8092	856	851	789	1806767.711	357561.522
566	barn	8403	1310	1299	1244	1806343.232	357311.522
567	barn	8485	1487	1473	1419	1806215.628	357189.126
568	barn	8387	1402	1392	1339	1806325.003	357207.356
569	shed	8058	966	946	891	1806757.295	357441.731
570	shed	8201	1266	1257	1200	1806528.128	357228.189
571	barn	4898	1705	1593	1486	1810202.390	357269.422
572	shed	4810	1800	1570	1473	1810256.644	357191.297
573	shed	4083	2093	1242	1102	1810896.835	356841.904

574	shed	4012	2068	1307	1156	1810916.366	356742.078
575	barn	3950	1881	1038	882	1811120.359	356926.540
576	barn	3368	1182	929	719	1811815.020	356851.019
577	shed	3227	950	842	739	1812062.416	356901.800
578	shed	3189	940	844	738	1812059.812	356845.810
579	shed	3345	991	701	581	1812081.947	357078.883
580	shed	3219	887	763	665	1812149.656	356970.810
581	shed	3590	1179	435	311	1812018.145	357344.508
582	shed	4666	1388	371	257	1811437.199	358257.811
583	shed	4685	1453	436	326	1811372.095	358230.468
584	shed	3287	819	563	509	1812449.569	357287.759
585	shed	3385	926	477	430	1812340.194	357332.030
586	barn	3567	456	281	186	1812827.173	357816.405

Hummingbird Energy LLC
Supplemental Responses to Siting Board Staff's First Request for Information
Case No. 2022-00272

Request No. 47:

Provide any geotechnical reports indicating the location of karst formations within the project boundaries.

Original Response:

Hummingbird has commissioned several geotechnical investigations related to the potential for karst formations. The initial study was a desktop investigation, which is attached. Additional reporting is in progress from completed field studies and will be provided by August 25, 2023.

Supplemental Response:

The report is progressing but incomplete at this time. Hummingbird anticipates that reporting will be completed in the near future and will provide the report upon completion.

Responding Witness: Chad Martin

Hummingbird Energy LLC
Supplemental Responses to Siting Board Staff's First Request for Information
Case No. 2022-00272

Request No. 59:

Refer to SAR, Exhibit D, Noise Assessment, Table 5. For each nonresidential receptor, provide a table with operational sound pressure levels similar to Table 5.

Original Response:

Hummingbird has contacted Stantec to produce the requested table and will submit the table to the Siting Board by August 25, 2023.

Supplemental Response:

The answers to questions 59, 61 and 62 essentially require a new noise assessment to be developed. Hummingbird's contractor, Stantec, is in the process of developing a noise report that will address these questions, but at this point we do not have a clear date by which the new report will be available. The report will be filed as soon as complete, hopefully within the next three weeks.

Responding Witness: Chad Martin

Hummingbird Energy LLC
Supplemental Responses to Siting Board Staff's First Request for Information
Case No. 2022-00272

Request No. 61:

Refer to SAR, Exhibit D, Noise Assessment, Table 3. Provide the same table with typical noise levels at 250 feet from the source.

Original Response:

A revised table that will extrapolate noise levels to 250 feet will be submitted to the Siting Board by August 25, 2023.

Supplemental Response:

See response to Request No. 59.

Responding Witness: Chad Martin

Hummingbird Energy LLC
Supplemental Responses to Siting Board Staff's First Request for Information
Case No. 2022-00272

Request No. 62:

Refer to SAR, Exhibit D, Noise Assessment, Table 4. Provide additional calculated noise levels reflecting the cumulative levels of construction related and ambient noise for the following noise receptors:

- a. R105.
- b. R52.
- c. R91.

Original Response:

The Project's Noise Assessment will be revised to reflect the cumulative levels of construction related and ambient noises for noise receptors R105, R53, and R91 and will be provided to the Siting Board by August 25, 2023.

Supplemental Response:

See response to Request No. 59.

Responding Witness: Chad Martin

Hummingbird Energy LLC
Supplemental Responses to Siting Board Staff's First Request for Information
Case No. 2022-00272

Request No. 82:

Provide copies of any documents submitted to the other agencies, other than what is provided in the application.

Original Response:

In addition to the U.S. Fish and Wildlife Service correspondence detailed in the response to Request No. 78, Hummingbird also submitted a request for a Jurisdictional Determination to the U.S. Army Corps of Engineers (Louisville District). Due to size limitations, please find Hummingbird's Jurisdictional Determination request attached as a separate file.

Supplemental Response:

Please see the attached Preliminary Jurisdictional Determination documents received on August 24, 2023, from the U.S. Army Corps of Engineers (Louisville District) verifying the locations of the wetlands and streams delineated within the site.

Responding Witness: Ben Kerr



DEPARTMENT OF THE ARMY
U.S. ARMY CORPS OF ENGINEERS, LOUISVILLE DISTRICT
600 DR. MARTIN LUTHER KING JR PL
LOUISVILLE, KY 40202

August 24, 2023

Regulatory Division
South Branch
ID No. LRL-2022-00991-sea

Mr. Adam Peterson
Recurrent Energy, LLC
3000 E Cesar Chavez Street, Suite 400
Austin, Texas 78702

Dear Mr. Peterson:

This letter is in regard to a preliminary jurisdictional determination request sent on your behalf by Stantec, regarding aquatic resources on a Recurrent Energy, LLC project site. The review area is a 4,137-acre project area located northeast of Flemingsburg, in Fleming County, Kentucky (Latitude: 38.463448°N; Longitude: 83.647487°W).

The site was reviewed pursuant to Section 404 of the Clean Water Act (CWA) and Section 10 of the Rivers and Harbors Act of 1899. Section 404 of the CWA requires that a Department of the Army (DA) permit be obtained for the placement or discharge of dredged and/or fill material into "waters of the United States (U.S.)," including wetlands, prior to conducting the work (33 U.S.C. 1344). Section 10 of the Rivers and Harbors Act of 1899 requires that a DA Permit be obtained for structures or work in or affecting navigable "waters of the U.S.," prior to conducting the work (33 U.S.C. 403).

Based on the information provided to this office, the site contains streams and wetlands that may be considered jurisdictional "waters of the U.S.," in accordance with the Regulatory Guidance Letter for Jurisdictional Determinations issued by the U.S. Army Corps of Engineers on October 31, 2016 (RGL No. 16-01).

As indicated in the guidance, this Preliminary Jurisdictional Determination is non-binding and cannot be appealed and only provides a written indication that "waters of the U.S.," including wetlands, may be present on-site. For purposes of computation of impacts, compensatory mitigation requirements, and other resource protection measures, a permit decision made on the basis of a Preliminary Jurisdictional Determination will treat all waters and wetlands on the site as if they are jurisdictional "waters of the U.S."

Attached to this letter are a preliminary jurisdictional determination (PJD), a Notification of Appeal Process (NAP) fact sheet, and Request for Appeal (RFA) form. However, a PJD is not appealable and impacting "waters of the U.S." identified in the PJD will result in you waiving the right to request an approved jurisdictional determination (AJD) at a later date. An AJD may be requested (which may be appealed), by contacting me for further instruction.

The delineation included herein has been conducted to identify the location and extent of the aquatic resource boundaries and/or the jurisdictional status of aquatic resources for purposes

of the Clean Water Act for the particular site identified in this request. This delineation and/or jurisdictional determination may not be valid for the Wetland Conservation Provisions of the Food Security Act of 1985, as amended. If you or your tenant are USDA program participants, or anticipate participation in USDA programs, you should discuss the applicability of a certified wetland determination with the local USDA service center prior to starting work.

Should your project proposal include the placement or discharge of dredged and/or fill material into any “waters of the U.S.,” a DA Permit application must be submitted. Along with the DA permit application, we will need additional details regarding the project’s design, scope, photos, construction methods, purpose, maps, and all impacts to “waters” (linear feet, width and acreage), as well as any coordination or documentation with the United States Fish and Wildlife Service and the State Historic Preservation Officer (if possible). To submit your application electronically, save documents as a PDF (must not exceed 10 megabytes) and submit as an attachment to CELRL.Door.To.The.Corps@usace.army.mil. If submitting paperwork, all drawings must be submitted on 8½ x 11-inch paper and be of reproducible quality, or you may submit the information in electronic format via CD (please note we cannot accept thumb drives).

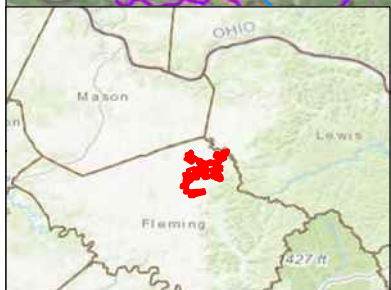
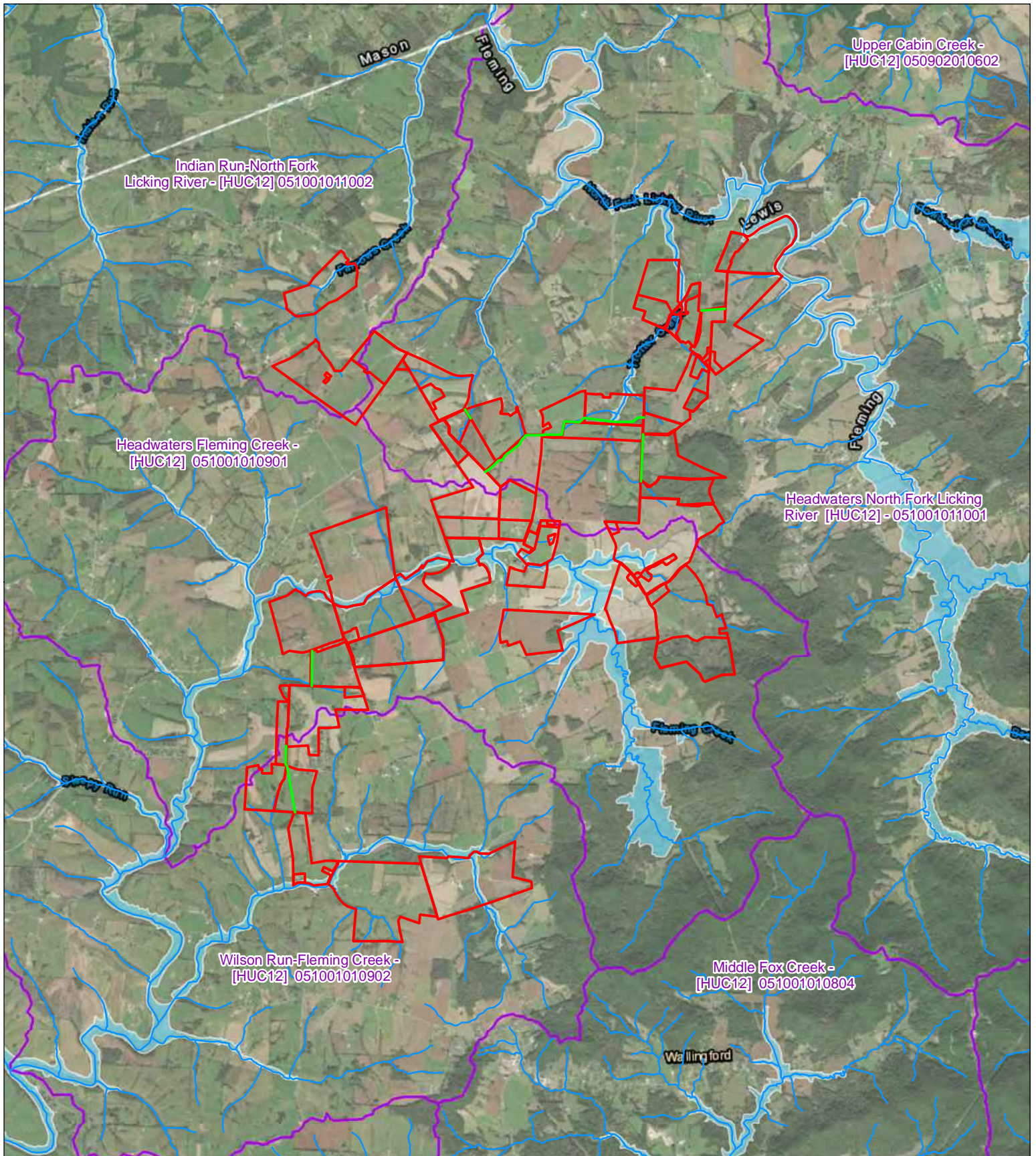
Further information on the Regulatory Program, including the DA Permit application, can be obtained from our website located at: <http://www.lrl.usace.army.mil/Missions/Regulatory.aspx> Please allow sufficient time in your preconstruction schedule for the processing of a DA permit application.

If you have any questions, please contact us by writing to the District Regulatory Office at the above address, ATTN: CELRL-RDS, or contact me directly at (502) 315-6711 or Sarah.E.Atherton@usace.army.mil. Any correspondence on this matter should refer to our ID Number LRL-2022-00991-sea. A copy of this letter will be furnished to your authorized agent.

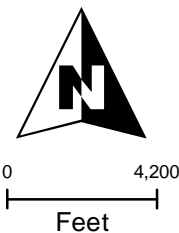
Sincerely,

Sarah Atherton
Project Manager, South Branch
Regulatory Division

Enclosures



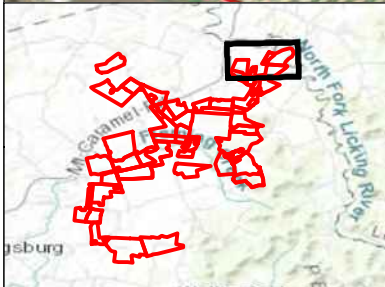
- NHDFlowline
- Utility_Corridors
- WBDHU12
- Project Area
- 100-Year Floodplains (Unstudied BFE)



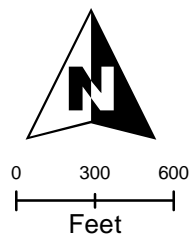
Hummingbird Energy LLC Solar Project
Environmental Resource Assessment
Fleming County, Kentucky

Project Area Overview

Date: February 2022	Project No: E320201701	Figure No: 2-1
------------------------	---------------------------	--------------------------



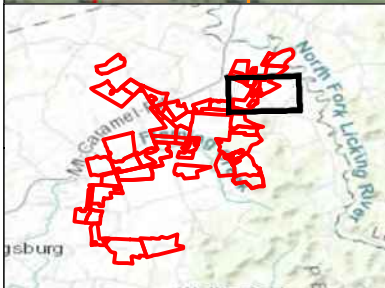
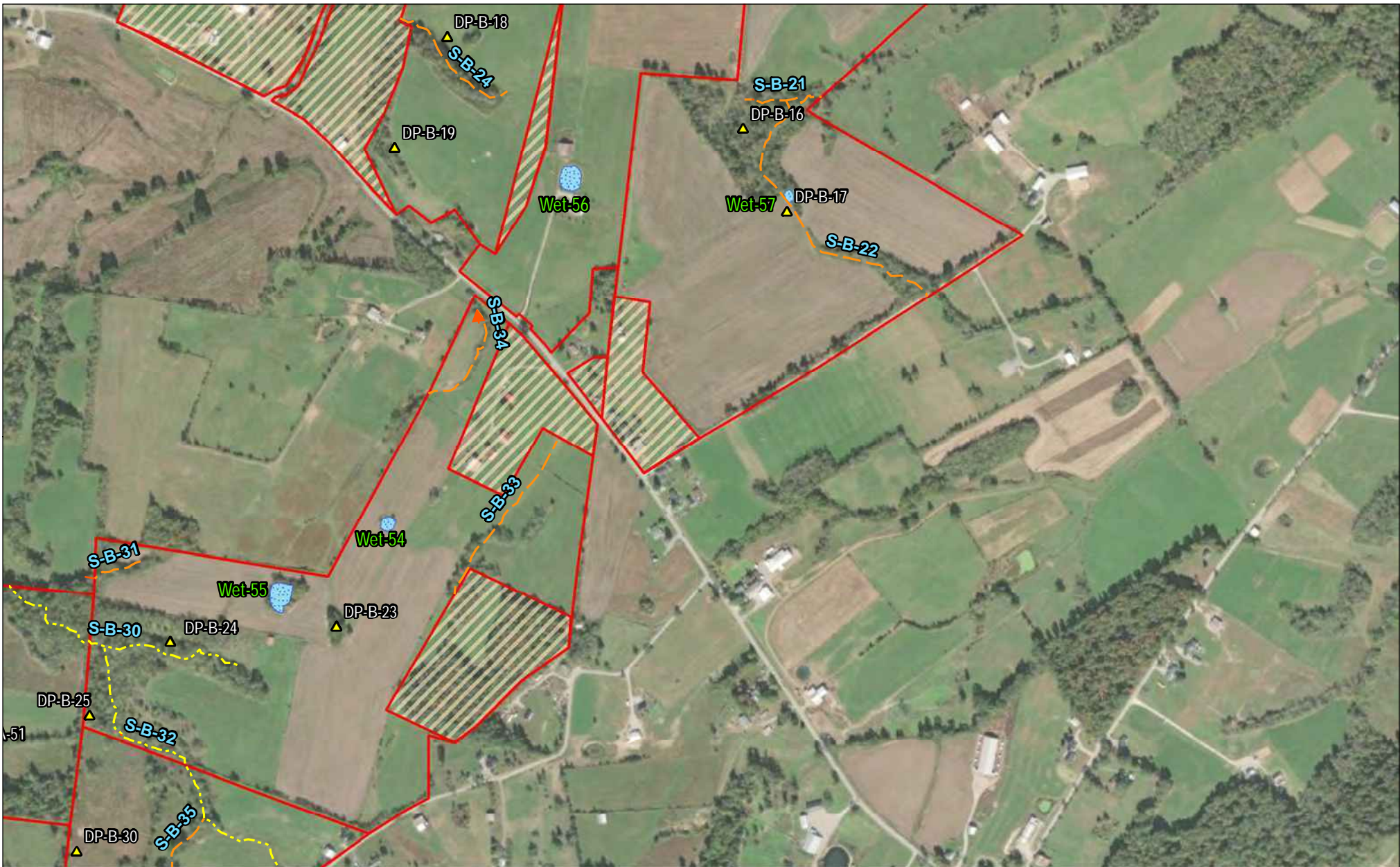
- ▲ Upland Datapoint
- Wetland Datapoint
- Ephemeral Stream
- Intermittent Stream
- Perennial Stream
- PEM Wetland
- PFO Wetland
- PUB Pond
- Excluded Parcels (No Access)
- Project Area



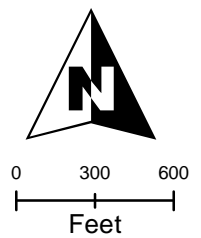
Hummingbird Energy LLC Solar Project
Environmental Resource Assessment
Fleming and Mason County, Kentucky

Delineated Wetlands and Waterbodies

Date: April 2023	Project No: E320201701	Figure No: A-	2
---------------------	---------------------------	-------------------------	---



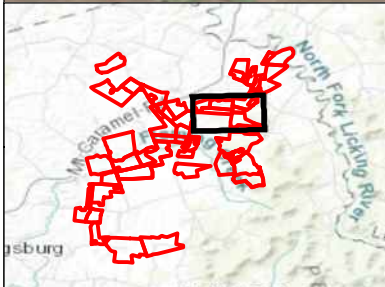
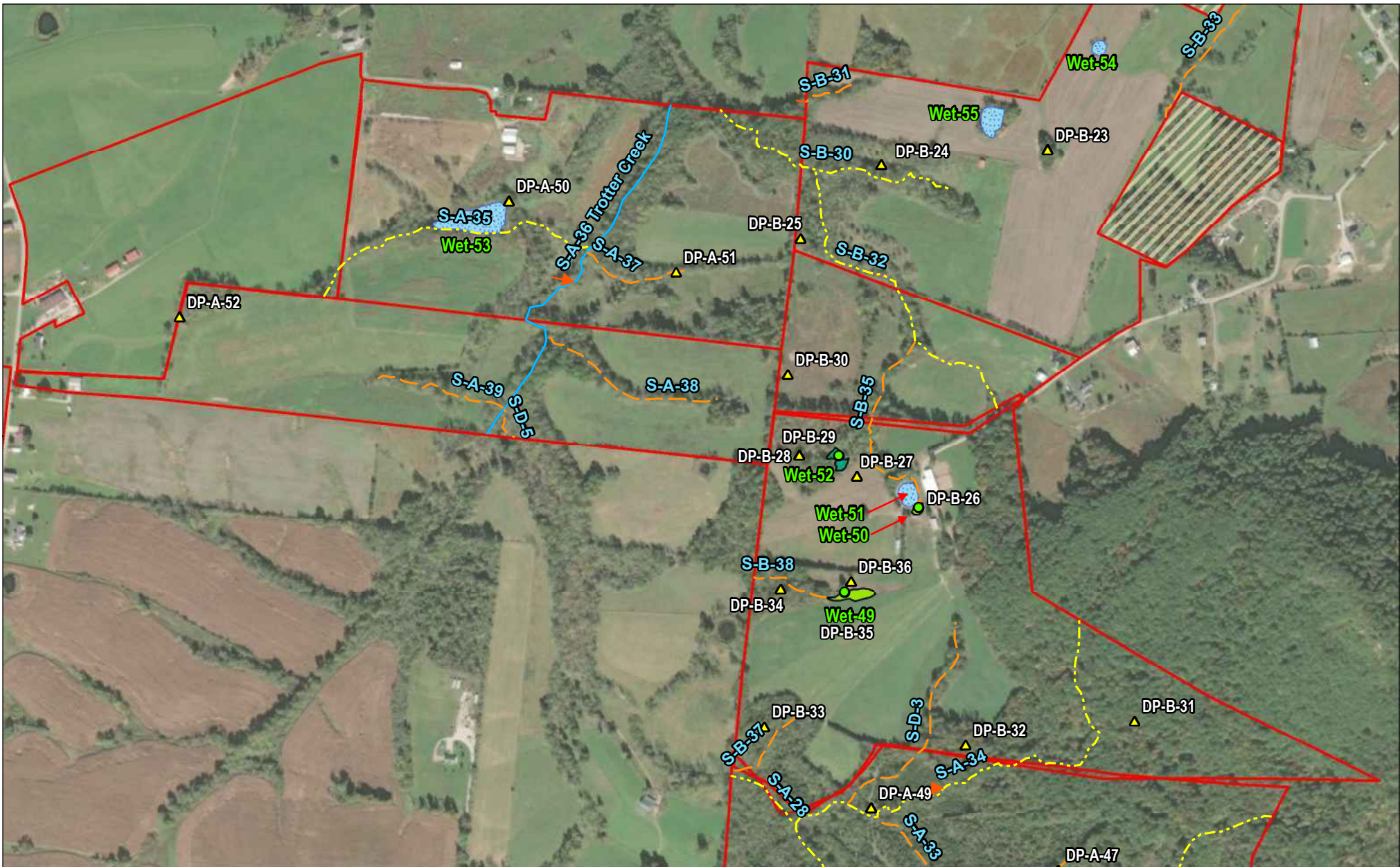
- ▲ Upland Datapoint
- Wetland Datapoint
- Ephemeral Stream
- Intermittent Stream
- Perennial Stream
- PEM Wetland
- PFO Wetland
- PUB Pond
- Excluded Parcels (No Access)
- Project Area



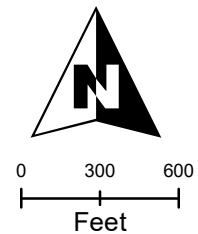
Hummingbird Energy LLC Solar Project
Environmental Resource Assessment
Fleming and Mason County, Kentucky

Delineated Wetlands and Waterbodies

Date: April 2023	Project No: E320201701	Figure No: A-
---------------------	---------------------------	-------------------------



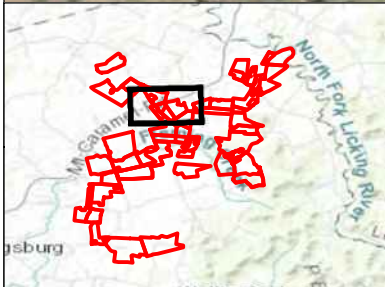
- ▲ Upland Datapoint
- Wetland Datapoint
- Ephemeral Stream
- - - Intermittent Stream
- Perennial Stream
- PEM Wetland
- PFO Wetland
- PUB Pond
- ▨ Excluded Parcels (No Access)
- ▭ Project Area



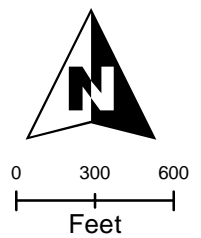
Hummingbird Energy LLC Solar Project
Environmental Resource Assessment
Fleming and Mason County, Kentucky

Delineated Wetlands and Waterbodies

Date: April 2023	Project No: E320201701	Figure No: A-4
---------------------	---------------------------	--------------------------



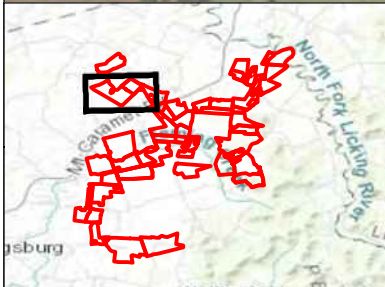
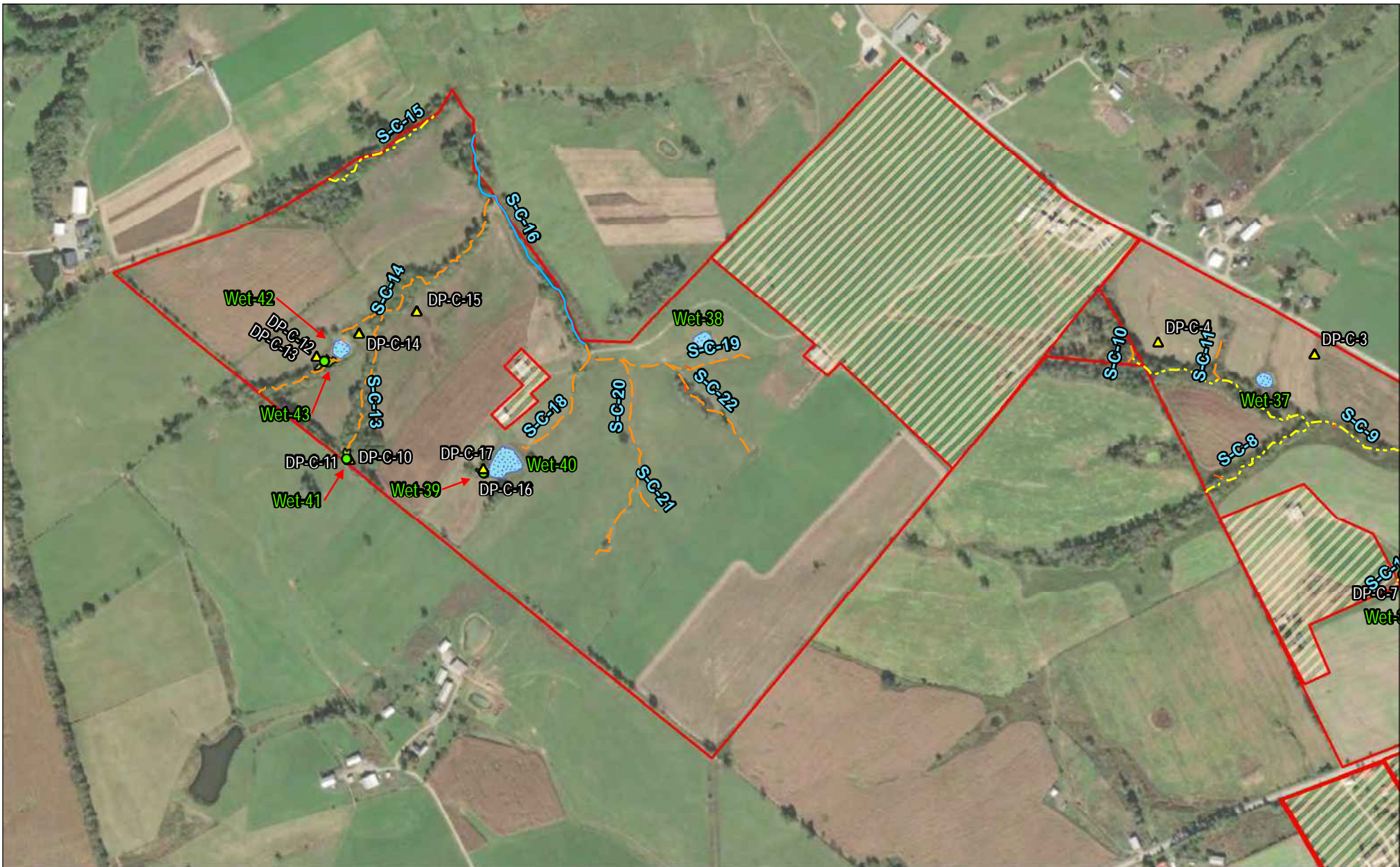
- ▲ Upland Datapoint
- Wetland Datapoint
- Ephemeral Stream
- Intermittent Stream
- Perennial Stream
- PEM Wetland
- PFO Wetland
- PUB Pond
- Excluded Parcels (No Access)
- Project Area



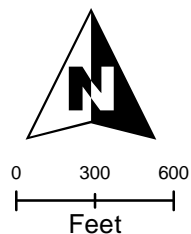
Hummingbird Energy LLC Solar Project
Environmental Resource Assessment
Fleming and Mason County, Kentucky

Delineated Wetlands and Waterbodies

Date: April 2023	Project No: E320201701	Figure No: A-
---------------------	---------------------------	-------------------------



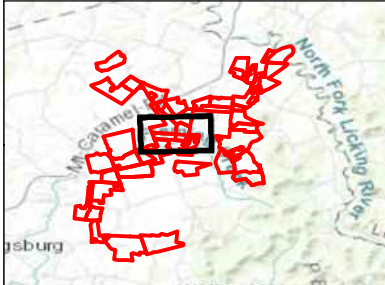
- ▲ Upland Datapoint
- Wetland Datapoint
- Ephemeral Stream
- .-.- Intermittent Stream
- Perennial Stream
- PEM Wetland
- PFO Wetland
- PUB Pond
- Excluded Parcels (No Access)
- Project Area



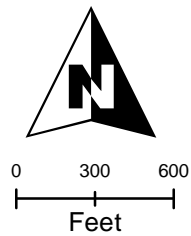
Hummingbird Energy LLC Solar Project
 Environmental Resource Assessment
 Fleming and Mason County, Kentucky

Delineated Wetlands and Waterbodies

Date: April 2023	Project No: E320201701	Figure No: A-
---------------------	---------------------------	------------------



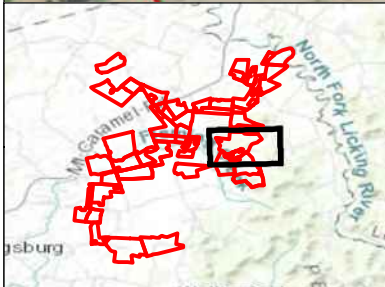
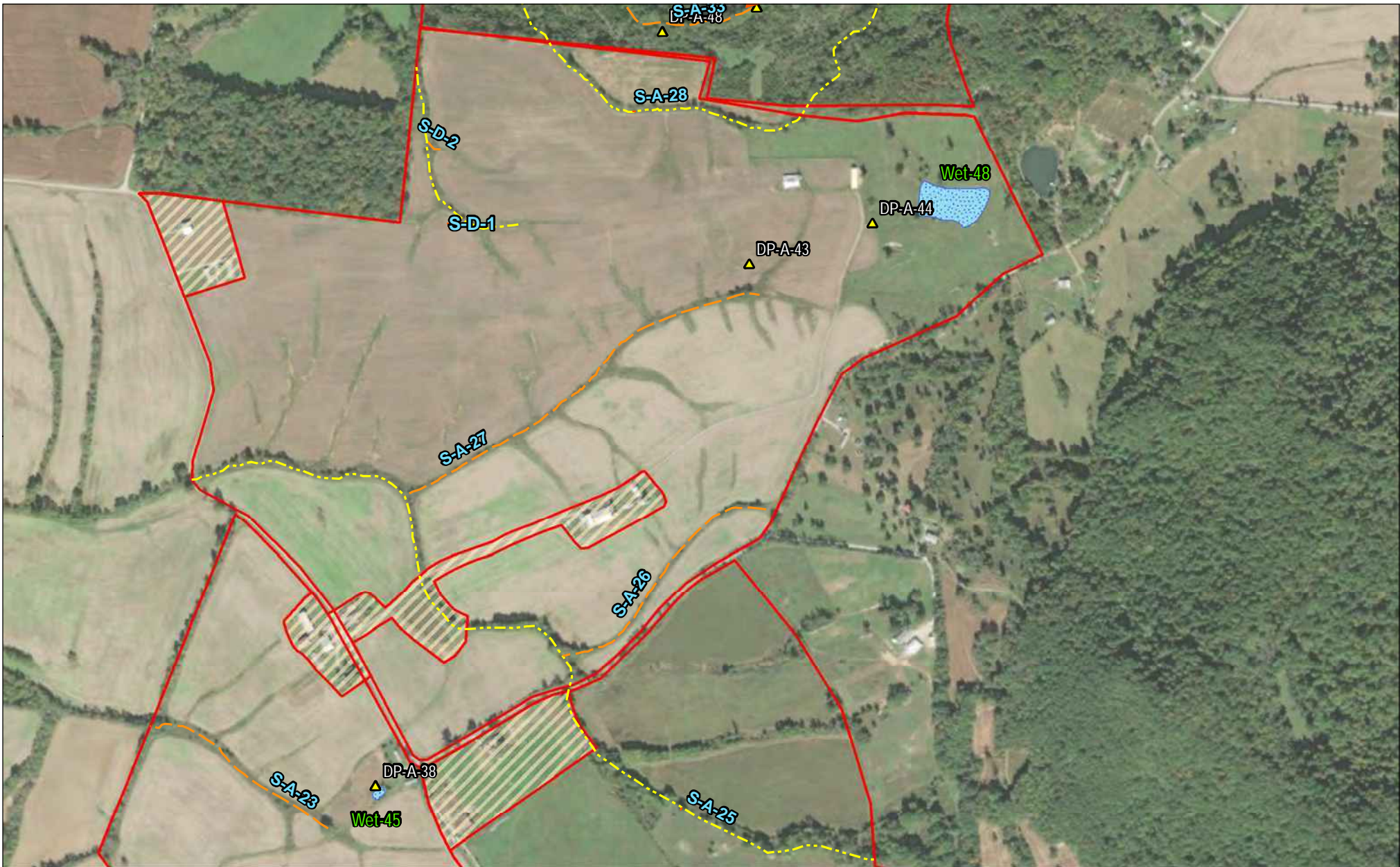
- ▲ Upland Datapoint
- Wetland Datapoint
- Ephemeral Stream
- - - Intermittent Stream
- Perennial Stream
- PEM Wetland
- PFO Wetland
- PUB Pond
- Excluded Parcels (No Access)
- Project Area



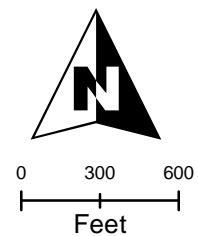
Hummingbird Energy LLC Solar Project
Environmental Resource Assessment
Fleming and Mason County, Kentucky

Delineated Wetlands and Waterbodies

Date: April 2023	Project No: E320201701	Figure No: A-
---------------------	---------------------------	-------------------------



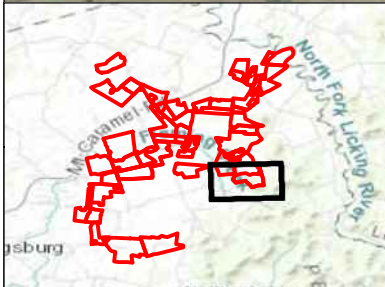
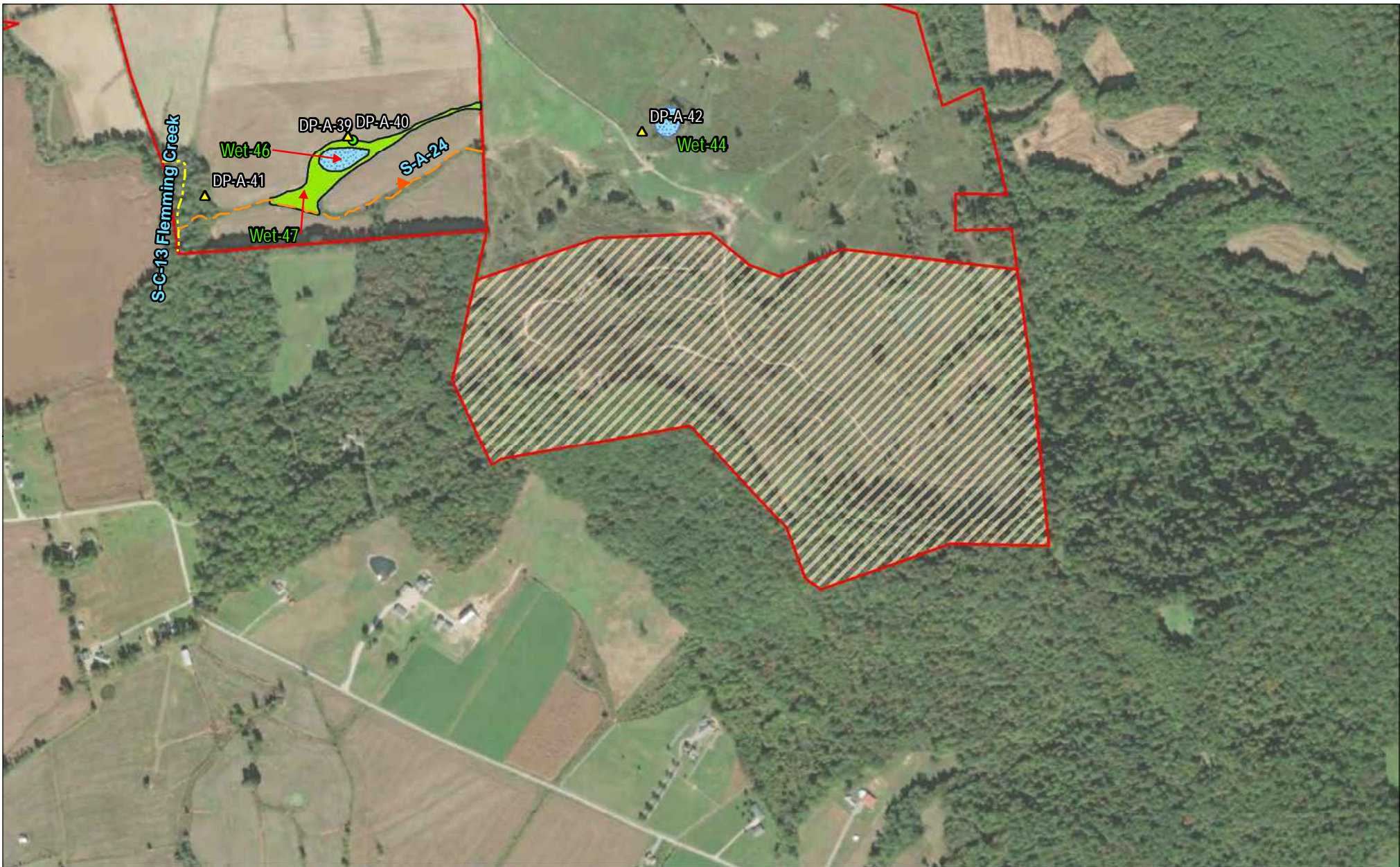
- ▲ Upland Datapoint
- Wetland Datapoint
- Ephemeral Stream
- Intermittent Stream
- Perennial Stream
- PEM Wetland
- PFO Wetland
- PUB Pond
- Excluded Parcels (No Access)
- Project Area



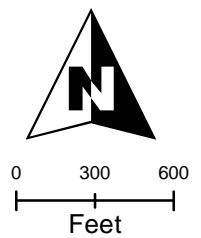
Hummingbird Energy LLC Solar Project
Environmental Resource Assessment
Fleming and Mason County, Kentucky

Delineated Wetlands and Waterbodies

Date: April 2023	Project No: E320201701	Figure No: A-
---------------------	---------------------------	-------------------------



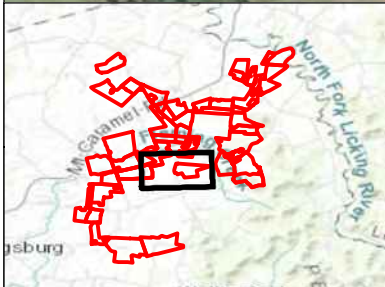
- ▲ Upland Datapoint
- Wetland Datapoint
- Ephemeral Stream
- Intermittent Stream
- Perennial Stream
- PEM Wetland
- PFO Wetland
- PUB Pond
- Excluded Parcels (No Access)
- Project Area



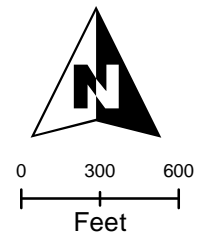
Hummingbird Energy LLC Solar Project
Environmental Resource Assessment
Fleming and Mason County, Kentucky

Delineated Wetlands and Waterbodies

Date: April 2023	Project No: E320201701	Figure No: A-
---------------------	---------------------------	-------------------------



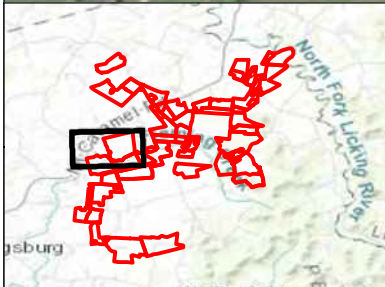
- ▲ Upland Datapoint
- Wetland Datapoint
- Ephemeral Stream
- Intermittent Stream
- Perennial Stream
- PEM Wetland
- PFO Wetland
- PUB Pond
- Excluded Parcels (No Access)
- Project Area



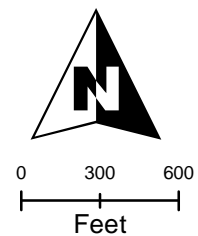
Hummingbird Energy LLC Solar Project
Environmental Resource Assessment
Fleming and Mason County, Kentucky

Delineated Wetlands and Waterbodies

Date: April 2023	Project No: E320201701	Figure No: A- 10
---------------------	---------------------------	----------------------------



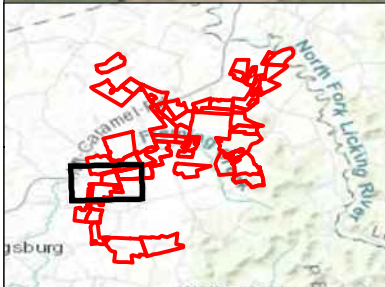
- ▲ Upland Datapoint
- Wetland Datapoint
- Ephemeral Stream
- Intermittent Stream
- Perennial Stream
- PEM Wetland
- PFO Wetland
- PUB Pond
- Excluded Parcels (No Access)
- Project Area



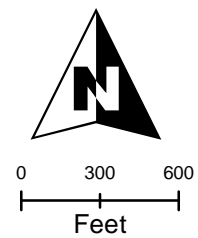
Hummingbird Energy LLC Solar Project
Environmental Resource Assessment
Fleming and Mason County, Kentucky

Delineated Wetlands and Waterbodies

Date: April 2023	Project No: E320201701	Figure No: A-	11
---------------------	---------------------------	-------------------------	----



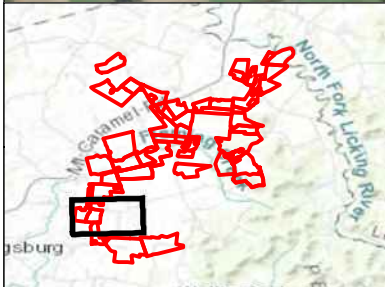
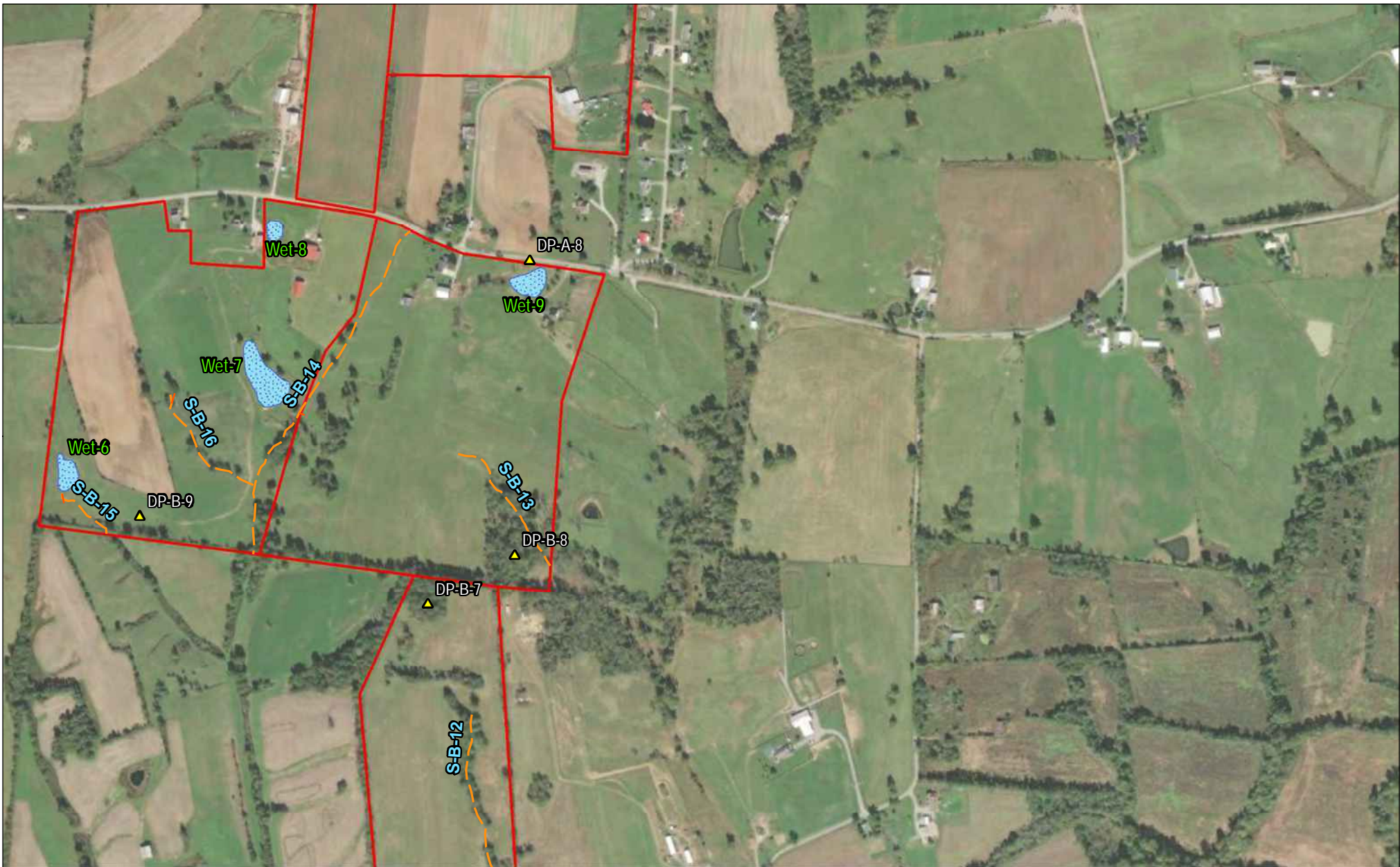
- ▲ Upland Datapoint
- Wetland Datapoint
- Ephemeral Stream
- Intermittent Stream
- Perennial Stream
- PEM Wetland
- PFO Wetland
- PUB Pond
- Excluded Parcels (No Access)
- Project Area



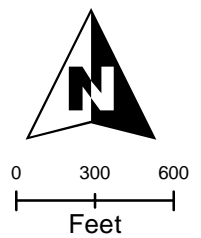
Hummingbird Energy LLC Solar Project
Environmental Resource Assessment
Fleming and Mason County, Kentucky

Delineated Wetlands and Waterbodies

Date: April 2023	Project No: E320201701	Figure No: A- 12
---------------------	---------------------------	----------------------------



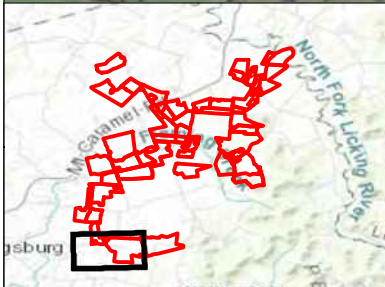
- ▲ Upland Datapoint
- Wetland Datapoint
- Ephemeral Stream
- Intermittent Stream
- Perennial Stream
- PEM Wetland
- PFO Wetland
- PUB Pond
- Excluded Parcels (No Access)
- Project Area



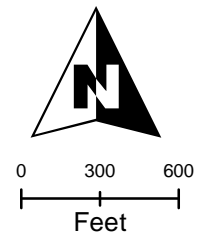
Hummingbird Energy LLC Solar Project
Environmental Resource Assessment
Fleming and Mason County, Kentucky

Delineated Wetlands and Waterbodies

Date: April 2023	Project No: E320201701	Figure No: A-
---------------------	---------------------------	-------------------------



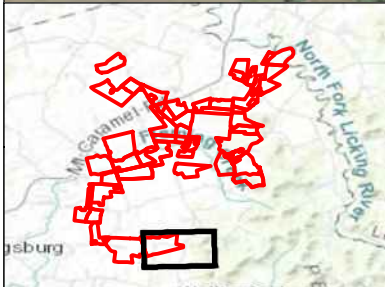
- ▲ Upland Datapoint
- Wetland Datapoint
- Ephemeral Stream
- .-.- Intermittent Stream
- Perennial Stream
- PEM Wetland
- PFO Wetland
- PUB Pond
- ▨ Excluded Parcels (No Access)
- ▭ Project Area



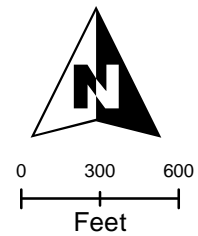
Hummingbird Energy LLC Solar Project
Environmental Resource Assessment
Fleming and Mason County, Kentucky

Delineated Wetlands and Waterbodies

Date: April 2023	Project No: E320201701	Figure No: A- 14
---------------------	---------------------------	----------------------------



- ▲ Upland Datapoint
- Wetland Datapoint
- Ephemeral Stream
- - - Intermittent Stream
- Perennial Stream
- PEM Wetland
- PFO Wetland
- PUB Pond
- Excluded Parcels (No Access)
- Project Area



Hummingbird Energy LLC Solar Project
Environmental Resource Assessment
Fleming and Mason County, Kentucky

Delineated Wetlands and Waterbodies

Date: April 2023	Project No: E320201701	Figure No: A- 15
---------------------	---------------------------	----------------------------

Appendix 2 - PRELIMINARY JURISDICTIONAL DETERMINATION (PJD) FORM

BACKGROUND INFORMATION

A. REPORT COMPLETION DATE FOR PJD: August 22, 2023

B. NAME AND ADDRESS OF PERSON REQUESTING PJD:

Mr. Adam Peterson
Recurrent Energy, LLC
3000 E Cesar Chavez Street, Suite 400
Austin, Texas 78702

C. DISTRICT OFFICE, FILE NAME, AND NUMBER: Louisville District, Hummingbird Solar JD Request, LRL-2022-00991-sea

**D. PROJECT LOCATION(S) AND BACKGROUND INFORMATION:
(USE THE TABLE BELOW TO DOCUMENT MULTIPLE AQUATIC RESOURCES AND/OR
AQUATIC RESOURCES AT DIFFERENT SITES)**

State: Kentucky County/parish/borough: Fleming City: Flemingsburg

Center coordinates of site (lat/long in degree decimal format):

Lat.: 38.463448° N Long.: 83.647487° W

Universal Transverse Mercator:

Name of nearest waterbody: Fleming Creek, Trotter Creek, North Fork
Licking River

E. REVIEW PERFORMED FOR SITE EVALUATION (CHECK ALL THAT APPLY):

Office (Desk) Determination. Date: May 2, 2023

Field Determination. Date(s):

TABLE OF AQUATIC RESOURCES IN REVIEW AREA WHICH "MAY BE" SUBJECT TO REGULATORY JURISDICTION.

Site number	Latitude (decimal degrees)	Longitude (decimal degrees)	Estimated amount of aquatic resource in review area (acreage and linear feet, if applicable)	Type of aquatic resource (i.e., wetland vs. non-wetland waters)	Geographic authority to which the aquatic resource "may be" subject (i.e., Section 404 or Section 10/404)
			See Attached Table		

- 1) The Corps of Engineers believes that there may be jurisdictional aquatic resources in the review area, and the requestor of this PJD is hereby advised of his or her option to request and obtain an approved JD (AJD) for that review area based on an informed decision after having discussed the various types of JDs and their characteristics and circumstances when they may be appropriate.
- 2) In any circumstance where a permit applicant obtains an individual permit, or a Nationwide General Permit (NWP) or other general permit verification requiring "pre-construction notification" (PCN), or requests verification for a non-reporting NWP or other general permit, and the permit applicant has not requested an AJD for the activity, the permit applicant is hereby made aware that: (1) the permit applicant has elected to seek a permit authorization based on a PJD, which does not make an official determination of jurisdictional aquatic resources; (2) the applicant has the option to request an AJD before accepting the terms and conditions of the permit authorization, and that basing a permit authorization on an AJD could possibly result in less compensatory mitigation being required or different special conditions; (3) the applicant has the right to request an individual permit rather than accepting the terms and conditions of the NWP or other general permit authorization; (4) the applicant can accept a permit authorization and thereby agree to comply with all the terms and conditions of that permit, including whatever mitigation requirements the Corps has determined to be necessary; (5) undertaking any activity in reliance upon the subject permit authorization without requesting an AJD constitutes the applicant's acceptance of the use of the PJD; (6) accepting a permit authorization (e.g., signing a proffered individual permit) or undertaking any activity in reliance on any form of Corps permit authorization based on a PJD constitutes agreement that all aquatic resources in the review area affected in any way by that activity will be treated as jurisdictional, and waives any challenge to such jurisdiction in any administrative or judicial compliance or enforcement action, or in any administrative appeal or in any Federal court; and (7) whether the applicant elects to use either an AJD or a PJD, the JD will be processed as soon as practicable. Further, an AJD, a proffered individual permit (and all terms and conditions contained therein), or individual permit denial can be administratively appealed pursuant to 33 C.F.R. Part 331. If, during an administrative appeal, it becomes appropriate to make an official determination whether geographic jurisdiction exists over aquatic resources in the review area, or to provide an official delineation of jurisdictional aquatic resources in the review area, the Corps will provide an AJD to accomplish that result, as soon as is practicable. This PJD finds that there "*may be*" waters of the U.S. and/or that there "*may be*" navigable waters of the U.S. on the subject review area, and identifies all aquatic features in the review area that could be affected by the proposed activity, based on the following information:

SUPPORTING DATA. Data reviewed for PJD (check all that apply)

Checked items should be included in subject file. Appropriately reference sources below where indicated for all checked items:

- Maps, plans, plots or plat submitted by or on behalf of the PJD requestor: Map:
Delineated Wetlands and Waterbodies Maps A-2 to A-15 dated April 2023
- Data sheets prepared/submitted by or on behalf of the PJD requestor.
 - Office concurs with data sheets/delineation report.
 - Office does not concur with data sheets/delineation report. Rationale: _____.
- Data sheets prepared by the Corps: _____.
- Corps navigable waters' study: _____.
- U.S. Geological Survey Hydrologic Atlas: _____.
 - USGS NHD data.
 - USGS 8 and 12 digit HUC maps.
- U.S. Geological Survey map(s). Cite scale & quad name: 1:24,000 - Flemingsburg, Kentucky Quad
- Natural Resources Conservation Service Soil Survey. Citation: USDA NRCS Web Map accessed December 2021
- National wetlands inventory map(s). Cite name: USFWS NWI Map accessed December 2021
- State/local wetland inventory map(s): _____.
- FEMA/FIRM maps:
- 100-year Floodplain Elevation is: _____.
- Photographs: Aerial (Name & Date):
or Other (Name & Date): Site Photos taken December 7-9, 2021
- Previous determination(s). File no. and date of response letter: _____.
- Other information (please specify):

IMPORTANT NOTE: The information recorded on this form has not necessarily been verified by the Corps and should not be relied upon for later jurisdictional determinations.

Signature and date of
Regulatory staff member
completing PJD

Signature and date of
person requesting PJD
(REQUIRED, unless obtaining
the signature is impracticable)

¹ Districts may establish timeframes for requestor to return signed PJD forms. If the requestor does not respond within the established time frame, the district may presume concurrence and no additional follow up is necessary prior to finalizing an action.

RGL 16-01: TABLE OF AQUATIC RESOURCES IN REVIEW AREA WHICH "MAY BE" SUBJECT TO REGULATORY JURISDICTION

Site number	Latitude (decimal degrees)	Longitude (decimal degrees)	Estimated amount of aquatic resource in review area (acreage and linear feet, if applicable)	Type of aquatic resource (i.e., wetland vs. non- wetland waters)	Geographic authority to which the aquatic resource "may be" subject (i.e., Section 404 or Section 10/404)
S-A-01 - Rapanos	38.44979	-83.668967	1526.48 feet	Non-wetland waters	Section 404
S-A-02 - Rapanos	38.460247	-83.670461	423.48 feet	Non-wetland waters	Section 404
S-A-03 - Rapanos	38.423295	-83.660539	1012.03 feet	Non-wetland waters	Section 404
S-A-04 - Rapanos	38.448695	-83.667431	552.17 feet	Non-wetland waters	Section 404
S-A-05 - Rapanos	38.448049	-83.674314	2129.2 feet	Non-wetland waters	Section 404
S-A-06 - Rapanos	38.466439	-83.660667	705.07 feet	Non-wetland waters	Section 404
S-A-07 - Rapanos	38.466639	-83.6596	3154.5 feet	Non-wetland waters	Section 404
S-A-08 - Rapanos	38.467477	-83.669048	721.51 feet	Non-wetland waters	Section 404
S-A-09 - Rapanos	38.465791	-83.669078	1626.19 feet	Non-wetland waters	Section 404
S-A-10 - Rapanos	38.466069	-83.668337	464.78 feet	Non-wetland waters	Section 404
S-A-11 - Rapanos	38.458202	-83.66588	578.55 feet	Non-wetland waters	Section 404
S-A-12 - Rapanos	38.458091	-83.661759	1846.96 feet	Non-wetland waters	Section 404
S-A-13 - Rapanos	38.457892	-83.659753	1130.24 feet	Non-wetland waters	Section 404
S-A-14 - Rapanos	38.460181	-83.662348	6279.91 feet	Non-wetland waters	Section 404
S-A-15 - Rapanos	38.459937	-83.654883	2706.97 feet	Non-wetland waters	Section 404
S-A-16 - Rapanos	38.423672	-83.662602	908.98 feet	Non-wetland waters	Section 404
S-A-17 - Rapanos	38.458564	-83.653167	319.3 feet	Non-wetland waters	Section 404
S-A-18 - Rapanos	38.456501	-83.636086	1544.86 feet	Non-wetland waters	Section 404
S-A-19 - Rapanos	38.457306	-83.642615	631.46 feet	Non-wetland waters	Section 404
S-A-20 - Rapanos	38.46178	-83.636702	966.59 feet	Non-wetland waters	Section 404
S-A-21 - Rapanos	38.459185	-83.655166	552.11 feet	Non-wetland waters	Section 404
S-A-22 - Rapanos	38.464354	-83.639101	596.08 feet	Non-wetland waters	Section 404
S-A-23 - Rapanos	38.459079	-83.625416	1181.53 feet	Non-wetland waters	Section 404
S-A-24 - Rapanos	38.454488	-83.623679	1894.55 feet	Non-wetland waters	Section 404
S-A-25 - Rapanos	38.461145	-83.619454	5028.69 feet	Non-wetland waters	Section 404
S-A-26 - Rapanos	38.462197	-83.617476	1487.91 feet	Non-wetland waters	Section 404
S-A-27 - Rapanos	38.464984	-83.619147	2317.41 feet	Non-wetland waters	Section 404
S-A-28 - Rapanos	38.469333	-83.617092	4106.7 feet	Non-wetland waters	Section 404

RGL 16-01: TABLE OF AQUATIC RESOURCES IN REVIEW AREA WHICH "MAY BE" SUBJECT TO REGULATORY JURISDICTION

Site number	Latitude (decimal degrees)	Longitude (decimal degrees)	Estimated amount of aquatic resource in review area (acreage and linear feet, if applicable)	Type of aquatic resource (i.e., wetland vs. non- wetland waters)	Geographic authority to which the aquatic resource "may be" subject (i.e., Section 404 or Section 10/404)
S-A-29 - Rapanos	38.476658	-83.640632	3457.83 feet	Non-wetland waters	Section 404
S-A-30a - Rapanos	38.48099	-83.646403	458.97 feet	Non-wetland waters	Section 404
S-A-30b - Rapanos	38.479459	-83.646289	475.25 feet	Non-wetland waters	Section 404
S-A-31 - Rapanos	38.475895	-83.640111	848.3 feet	Non-wetland waters	Section 404
S-A-32 - Rapanos	38.474111	-83.643721	487.25 feet	Non-wetland waters	Section 404
S-A-33 - Rapanos	38.470602	-83.617658	1320.93 feet	Non-wetland waters	Section 404
S-A-34 - Rapanos	38.472359	-83.617453	2708.26 feet	Non-wetland waters	Section 404
S-A-35 - Rapanos	38.48031	-83.62774	1700.95 feet	Non-wetland waters	Section 404
S-A-36 Trotter Creek - Rapanos	38.479768	-83.625415	2313.7 feet	Non-wetland waters	Section 404
S-A-37 - Rapanos	38.479615	-83.624307	610.68 feet	Non-wetland waters	Section 404
S-A-38 - Rapanos	38.477985	-83.624697	1081.83 feet	Non-wetland waters	Section 404
S-A-39 - Rapanos	38.47788	-83.628028	765.17 feet	Non-wetland waters	Section 404
S-B-01 - Rapanos	38.430022	-83.647414	450.82 feet	Non-wetland waters	Section 404
S-B-02 - Rapanos	38.462517	-83.639334	377.98 feet	Non-wetland waters	Section 404
S-B-03 - Rapanos	38.427473	-83.648585	3163.4 feet	Non-wetland waters	Section 404
S-B-04 - Rapanos	38.42888	-83.652071	846.83 feet	Non-wetland waters	Section 404
S-B-05 - Rapanos	38.424867	-83.651076	2031.61 feet	Non-wetland waters	Section 404
S-B-06 - Rapanos	38.424108	-83.664262	4874.45 feet	Non-wetland waters	Section 404
S-B-07 - Rapanos	38.425673	-83.664531	957.84 feet	Non-wetland waters	Section 404
S-B-08 - Rapanos	38.42837	-83.658089	989.81 feet	Non-wetland waters	Section 404
S-B-09 - Rapanos	38.422143	-83.66415	1485.51 feet	Non-wetland waters	Section 404
S-B-10 - Rapanos	38.421274	-83.665034	133.11 feet	Non-wetland waters	Section 404
S-B-11 - Rapanos	38.421209	-83.663993	402.4 feet	Non-wetland waters	Section 404
S-B-12 - Rapanos	38.430675	-83.672725	2350.45 feet	Non-wetland waters	Section 404
S-B-13 - Rapanos	38.436918	-83.672642	860.77 feet	Non-wetland waters	Section 404
S-B-14 - Rapanos	38.438645	-83.676395	2054.78 feet	Non-wetland waters	Section 404
S-B-15 - Rapanos	38.436594	-83.680827	389.29 feet	Non-wetland waters	Section 404
S-B-16 - Rapanos	38.437638	-83.678704	748.78 feet	Non-wetland waters	Section 404

RGL 16-01: TABLE OF AQUATIC RESOURCES IN REVIEW AREA WHICH "MAY BE" SUBJECT TO REGULATORY JURISDICTION

Site number	Latitude (decimal degrees)	Longitude (decimal degrees)	Estimated amount of aquatic resource in review area (acreage and linear feet, if applicable)	Type of aquatic resource (i.e., wetland vs. non- wetland waters)	Geographic authority to which the aquatic resource "may be" subject (i.e., Section 404 or Section 10/404)
S-B-17 - Rapanos	38.495272	-83.604389	2347.28 feet	Non-wetland waters	Section 404
S-B-18 - Rapanos	38.494478	-83.604903	759.55 feet	Non-wetland waters	Section 404
S-B-19 - Rapanos	38.494592	-83.602998	463.4 feet	Non-wetland waters	Section 404
S-B-20 - Rapanos	38.499819	-83.60423	378.23 feet	Non-wetland waters	Section 404
S-B-21 - Rapanos	38.489922	-83.608213	474.52 feet	Non-wetland waters	Section 404
S-B-22 - Rapanos	38.48807	-83.607782	1685.86 feet	Non-wetland waters	Section 404
S-B-23 - Rapanos	38.451156	-83.669045	1117.22 feet	Non-wetland waters	Section 404
S-B-24 - Rapanos	38.490364	-83.614697	814.15 feet	Non-wetland waters	Section 404
S-B-25 - Rapanos	38.428738	-83.668942	1297.33 feet	Non-wetland waters	Section 404
S-B-26 - Rapanos	38.492634	-83.616341	305.47 feet	Non-wetland waters	Section 404
S-B-27 - Rapanos	38.493823	-83.616807	603.94 feet	Non-wetland waters	Section 404
S-B-28 Trotter Creek - Rapanos	38.497012	-83.615958	379.21 feet	Non-wetland waters	Section 404
S-B-29 - Rapanos	38.496106	-83.617643	1246.44 feet	Non-wetland waters	Section 404
S-B-30 - Rapanos	38.481383	-83.620526	1534.27 feet	Non-wetland waters	Section 404
S-B-31 - Rapanos	38.48254	-83.620763	283.06 feet	Non-wetland waters	Section 404
S-B-32 - Rapanos	38.479548	-83.619298	1905.29 feet	Non-wetland waters	Section 404
S-B-33 - Rapanos	38.483506	-83.613365	1039.77 feet	Non-wetland waters	Section 404
S-B-34 - Rapanos	38.485871	-83.614	667 feet	Non-wetland waters	Section 404
S-B-35 - Rapanos	38.477662	-83.619745	1202.39 feet	Non-wetland waters	Section 404
S-B-37 - Rapanos	38.472604	-83.621583	528.14 feet	Non-wetland waters	Section 404
S-B-38 - Rapanos	38.475061	-83.621225	453.08 feet	Non-wetland waters	Section 404
S-C-01 Farrow's Creek - Rapanos	38.49588	-83.667394	3904.51 feet	Non-wetland waters	Section 404
S-C-02 - Rapanos	38.495961	-83.668759	584.8 feet	Non-wetland waters	Section 404
S-C-03 - Rapanos	38.495567	-83.666811	411.16 feet	Non-wetland waters	Section 404
S-C-04 - Rapanos	38.495284	-83.666298	146.27 feet	Non-wetland waters	Section 404
S-C-05 - Rapanos	38.496903	-83.662906	1177.07 feet	Non-wetland waters	Section 404
S-C-06 - Rapanos	38.497751	-83.666594	632.71 feet	Non-wetland waters	Section 404

RGL 16-01: TABLE OF AQUATIC RESOURCES IN REVIEW AREA WHICH "MAY BE" SUBJECT TO REGULATORY JURISDICTION

Site number	Latitude (decimal degrees)	Longitude (decimal degrees)	Estimated amount of aquatic resource in review area (acreage and linear feet, if applicable)	Type of aquatic resource (i.e., wetland vs. non- wetland waters)	Geographic authority to which the aquatic resource "may be" subject (i.e., Section 404 or Section 10/404)
S-C-07 - Rapanos	38.497937	-83.666779	84.66 feet	Non-wetland waters	Section 404
S-C-08 - Rapanos	38.484732	-83.653163	782.12 feet	Non-wetland waters	Section 404
S-C-09 - Rapanos	38.485125	-83.651403	2968.96 feet	Non-wetland waters	Section 404
S-C-10 - Rapanos	38.486214	-83.655619	117.12 feet	Non-wetland waters	Section 404
S-C-11 - Rapanos	38.486178	-83.654015	236.31 feet	Non-wetland waters	Section 404
S-C-12 - Rapanos	38.483132	-83.648616	1154.58 feet	Non-wetland waters	Section 404
S-C-13 - Rapanos	38.485496	-83.670375	844.33 feet	Non-wetland waters	Section 404
S-C-14 - Rapanos	38.487085	-83.669467	2039.74 feet	Non-wetland waters	Section 404
S-C-15 - Rapanos	38.488975	-83.670159	757.31 feet	Non-wetland waters	Section 404
S-C-16 - Rapanos	38.487627	-83.667428	1395.42 feet	Non-wetland waters	Section 404
S-C-18 - Rapanos	38.485069	-83.666509	695.55 feet	Non-wetland waters	Section 404
S-C-19 - Rapanos	38.485893	-83.664621	993.25 feet	Non-wetland waters	Section 404
S-C-20 - Rapanos	38.48442	-83.665058	1301.21 feet	Non-wetland waters	Section 404
S-C-21 - Rapanos	38.483806	-83.664953	185.6 feet	Non-wetland waters	Section 404
S-C-22 - Rapanos	38.4852	-83.663759	691.73 feet	Non-wetland waters	Section 404
S-C-24 - Rapanos	38.467828	-83.648486	1003.42 feet	Non-wetland waters	Section 404
S-C-25 - Rapanos	38.467559	-83.645588	999.41 feet	Non-wetland waters	Section 404
S-D-1 - Rapanos	38.468086	-83.622053	1257.28 feet	Non-wetland waters	Section 404
S-D-2 - Rapanos	38.468613	-83.621852	96.41 feet	Non-wetland waters	Section 404
S-D-3 - Rapanos	38.472557	-83.618754	1306.96 feet	Non-wetland waters	Section 404
S-D-4 - Rapanos	38.476685	-83.638002	1395.65 feet	Non-wetland waters	Section 404
S-D-5 - Rapanos	38.477439	-83.626795	230 feet	Non-wetland waters	Section 404
WET-1 - Rapanos	38.4258	-83.643	0.81 acres	Non-wetland waters	Section 404
WET-2 - Rapanos	38.42832	-83.6583	0.17 acres	Non-wetland waters	Section 404
WET-3 - Rapanos	38.42483	-83.6575	0.44 acres	Non-wetland waters	Section 404
WET-4 - Rapanos	38.42599	-83.6607	0.44 acres	Non-wetland waters	Section 404
WET-5 - Rapanos	38.42776	-83.6725	0.23 acres	Non-wetland waters	Section 404
WET-6 - Rapanos	38.43717	-83.6812	0.37 acres	Non-wetland waters	Section 404

RGL 16-01: TABLE OF AQUATIC RESOURCES IN REVIEW AREA WHICH "MAY BE" SUBJECT TO REGULATORY JURISDICTION

Site number	Latitude (decimal degrees)	Longitude (decimal degrees)	Estimated amount of aquatic resource in review area (acreage and linear feet, if applicable)	Type of aquatic resource (i.e., wetland vs. non- wetland waters)	Geographic authority to which the aquatic resource "may be" subject (i.e., Section 404 or Section 10/404)
WET-7 - Rapanos	38.4387	-83.6775	1.09 acres	Non-wetland waters	Section 404
WET-8 - Rapanos	38.44094	-83.6773	0.19 acres	Non-wetland waters	Section 404
WET-9 - Rapanos	38.44026	-83.6724	0.49 acres	Non-wetland waters	Section 404
WET-10 - Rapanos	38.44599	-83.6736	0.22 acres	Wetland	Section 404
WET-11 - Rapanos	38.44557	-83.6733	0.11 acres	Non-wetland waters	Section 404
WET-12 - Rapanos	38.44772	-83.6676	0.58 acres	Non-wetland waters	Section 404
WET-13 - Rapanos	38.44849	-83.6651	0.16 acres	Wetland	Section 404
WET-14 - Rapanos	38.45244	-83.668	0.34 acres	Non-wetland waters	Section 404
WET-15 - Rapanos	38.4503	-83.6657	0.57 acres	Non-wetland waters	Section 404
WET-16 - Rapanos	38.45338	-83.671	0.15 acres	Wetland	Section 404
WET-17 - Rapanos	38.45487	-83.6696	0.36 acres	Wetland	Section 404
WET-18 - Rapanos	38.45737	-83.6694	0.18 acres	Non-wetland waters	Section 404
WET-19 - Rapanos	38.45673	-83.6656	0.06 acres	Non-wetland waters	Section 404
WET-20 - Rapanos	38.45694	-83.6588	0.21 acres	Non-wetland waters	Section 404
WET-21 - Rapanos	38.46667	-83.6678	0.23 acres	Non-wetland waters	Section 404
WET-22 - Rapanos	38.46649	-83.6624	1.54 acres	Non-wetland waters	Section 404
WET-23 - Rapanos	38.46521	-83.6613	0.04 acres	Non-wetland waters	Section 404
WET-24 - Rapanos	38.46467	-83.6632	0.2 acres	Non-wetland waters	Section 404
WET-25 - Rapanos	38.46331	-83.6617	1.39 acres	Wetland	Section 404
WET-26 - Rapanos	38.46238	-83.664	1.2 acres	Wetland	Section 404
WET-27 - Rapanos	38.46392	-83.6689	0.32 acres	Wetland	Section 404
WET-28 - Rapanos	38.46219	-83.6397	0.3 acres	Non-wetland waters	Section 404
WET-29 - Rapanos	38.46176	-83.6378	0.69 acres	Wetland	Section 404
WET-30 - Rapanos	38.47105	-83.6431	0.13 acres	Wetland	Section 404
WET-31 - Rapanos	38.46958	-83.6393	0.49 acres	Wetland	Section 404
WET-32 - Rapanos	38.47213	-83.6399	0.09 acres	Wetland	Section 404
WET-33 - Rapanos	38.47093	-83.6397	0.17 acres	Non-wetland waters	Section 404
WET-34 - Rapanos	38.47883	-83.6463	0.19 acres	Non-wetland waters	Section 404

RGL 16-01: TABLE OF AQUATIC RESOURCES IN REVIEW AREA WHICH "MAY BE" SUBJECT TO REGULATORY JURISDICTION

Site number	Latitude (decimal degrees)	Longitude (decimal degrees)	Estimated amount of aquatic resource in review area (acreage and linear feet, if applicable)	Type of aquatic resource (i.e., wetland vs. non- wetland waters)	Geographic authority to which the aquatic resource "may be" subject (i.e., Section 404 or Section 10/404)
WET-35 - Rapanos	38.48303	-83.6503	0.02 acres	Wetland	Section 404
WET-36 - Rapanos	38.48304	-83.6473	0.08 acres	Wetland	Section 404
WET-37 - Rapanos	38.48589	-83.6531	0.13 acres	Non-wetland waters	Section 404
WET-38 - Rapanos	38.48624	-83.6639	0.18 acres	Non-wetland waters	Section 404
WET-39 - Rapanos	38.48415	-83.6681	0.04 acres	Wetland	Section 404
WET-40 - Rapanos	38.4843	-83.6677	0.48 acres	Non-wetland waters	Section 404
WET-41 - Rapanos	38.48435	-83.6707	0.06 acres	Wetland	Section 404
WET-42 - Rapanos	38.48596	-83.6709	0.16 acres	Non-wetland waters	Section 404
WET-43 - Rapanos	38.48575	-83.6711	0.1 acres	Wetland	Section 404
WET-44 - Rapanos	38.45604	-83.6171	0.42 acres	Non-wetland waters	Section 404
WET-45 - Rapanos	38.45883	-83.6228	0.07 acres	Non-wetland waters	Section 404
WET-46 - Rapanos	38.45534	-83.6234	0.61 acres	Non-wetland waters	Section 404
WET-47 - Rapanos	38.45518	-83.6234	1.98 acres	Wetland	Section 404
WET-48 - Rapanos	38.468	-83.6121	1.54 acres	Non-wetland waters	Section 404
WET-49 - Rapanos	38.47496	-83.62	0.27 acres	Wetland	Section 404
WET-50 - Rapanos	38.47629	-83.6188	0.06 acres	Wetland	Section 404
WET-51 - Rapanos	38.47651	-83.619	0.26 acres	Non-wetland waters	Section 404
WET-52 - Rapanos	38.477	-83.6204	0.16 acres	Wetland	Section 404
WET-53 - Rapanos	38.48047	-83.6275	0.99 acres	Non-wetland waters	Section 404
WET-54 - Rapanos	38.48334	-83.6156	0.11 acres	Non-wetland waters	Section 404
WET-55 - Rapanos	38.48221	-83.6176	0.35 acres	Non-wetland waters	Section 404
WET-56 - Rapanos	38.48865	-83.6123	0.3 acres	Non-wetland waters	Section 404
WET-57 - Rapanos	38.48848	-83.6081	0.06 acres	Non-wetland waters	Section 404
WET-58 - Rapanos	38.49203	-83.6073	0.14 acres	Non-wetland waters	Section 404
WET-59 - Rapanos	38.49614	-83.6051	0.13 acres	Non-wetland waters	Section 404
WET-60 - Rapanos	38.49915	-83.6039	0.24 acres	Wetland	Section 404
WET-61 - Rapanos	38.42708	-83.6618	0.2 acres	Non-wetland waters	Section 404
WET-62 - Rapanos	38.43037	-83.6447	6.62 acres	Non-wetland waters	Section 404

RGL 16-01: TABLE OF AQUATIC RESOURCES IN REVIEW AREA WHICH "MAY BE" SUBJECT TO REGULATORY JURISDICTION

Site number	Latitude (decimal degrees)	Longitude (decimal degrees)	Estimated amount of aquatic resource in review area (acreage and linear feet, if applicable)	Type of aquatic resource (i.e., wetland vs. non- wetland waters)	Geographic authority to which the aquatic resource "may be" subject (i.e., Section 404 or Section 10/404)
WET-63 - Rapanos	38.474932	-83.644801	0.23 acres	Non-wetland waters	Section 404

Hummingbird Energy LLC
Supplemental Responses to Siting Board Staff's First Request for Information
Case No. 2022-00272

Request No. 84:

Refer to the Application, Exhibit F, Economic & Fiscal Contribution Report Table 2. Confirm that the average earnings per construction job will be \$49,000 over the entire construction period.

Original Response:

Hummingbird has contacted Mangum Economics to revise Table 2 to reflect the average earnings per construction job, and will submit the updated table to the Siting Board by August 25, 2023.

Supplemental Response:

Confirmed. The average earnings would be \$49,000 during the assumed 12-month construction period.

Responding Witness: Ben Kerr

Hummingbird Energy LLC
Supplemental Responses to Siting Board Staff's First Request for Information
Case No. 2022-00272

Request No. 85:

Refer to the Application, Exhibit F, Economic & Fiscal Contribution Report, Table 3. Confirm that the average earnings per operational job will be \$24,120 per year. Explain whether these are part-time or full-time positions.

Original Response:

Hummingbird has contacted Mangum Economics to revise Table 3 to provide the average earnings per operational job and clarify whether the average earnings figure reflects part-time or full-time positions. Hummingbird will submit the updated table to the Siting Board by August 25, 2023.

Supplemental Response:

The average earnings would be \$26,730 per year based on 3.6 jobs (rounded to 4). The total employment is the sum of fractional workers providing contract services over a 12-month period.

Responding Witness: Ben Kerr

Hummingbird Energy LLC
Supplemental Responses to Siting Board Staff's First Request for Information
Case No. 2022-00272

Request No. 86:

Refer to the Application, Exhibit F, Economic & Fiscal Contribution Report, Table 8 and Table 10. Explain if the net fiscal benefit to Fleming County and Kentucky would be the estimated cumulative tax revenue of the Project shown in Table 8 minus the estimated tax revenue generated under agricultural use shown in Table 10.

Original Response:

Hummingbird has contacted Mangum Economics to revise its report to clarify the figures used to calculate the net fiscal benefit to Fleming County and Kentucky through tax revenue generation. An updated figure will be submitted to the Siting Board by August 25, 2023.

Supplemental Response:

Yes, the fiscal benefit to Fleming County and Kentucky would be the estimated cumulative tax revenue of the Project shown in Table 8 minus the estimated tax revenue generated under agricultural use shown in Table 10.

Responding Witness: Ben Kerr