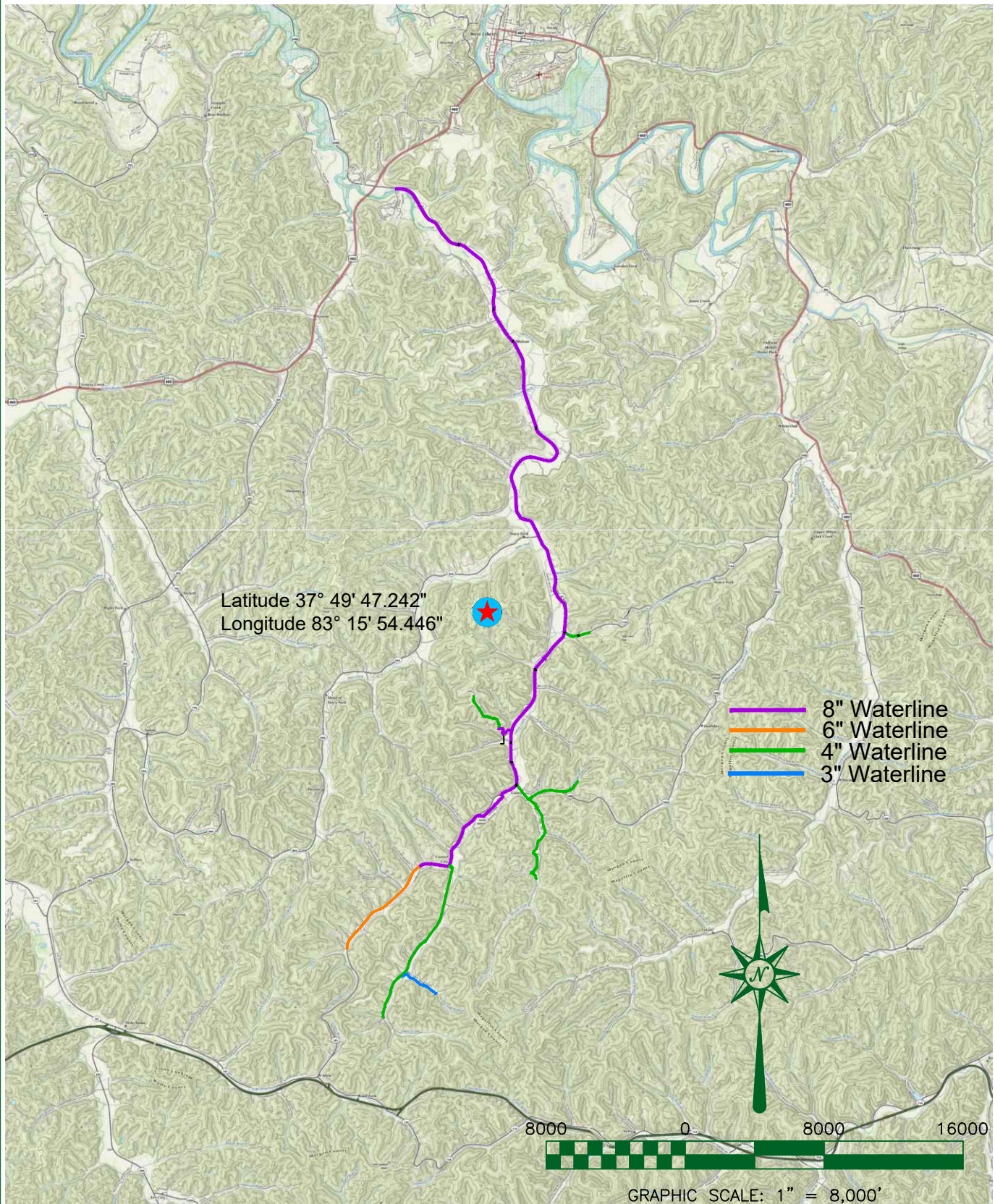


LAST PLOTTED ON: 4/27/2022 BY: SPARKS, JAMES H.
 DRAWING FILE LOCATION: P:\MORGAN COUNTY WATER DISTRICT\1191-02 WATERLINE REPLACEMENT PROJECT PHASE 2\04 PERMITS\KTC\PROJECT LOCATION MAP.DWG



- 8" Waterline
- 6" Waterline
- 4" Waterline
- 3" Waterline



GRAPHIC SCALE: 1" = 8,000'



nesbitt engineering, inc.
providing proven solutions since 1976

Project Locations
Morgan County Water District
Waterline Replacement Phase 2

drawing revisions:

drawn by:
JHS
 date:
2/23/22

job no.:
1191.02.04
 scale:
1" = 8000'