

**DELMAR
QUADRANGLE**



SCALE: 1" = 2,000'

**TODD ROAD: PROPOSED ±1,200 LF
OF 3-INCH WATER LINE TO REPLACE
EXISTING 3-INCH WATER LINE
LAT: 37° 03' 06.56" N
LONG: 84° 42' 23.40" W**

**SHEPOLA ROAD: PROPOSED ±900 LF
OF 3-INCH WATER LINE TO REPLACE
EXISTING 3-INCH WATER LINE
LAT: 37° 02' 56.30" N
LONG: 84° 42' 21.03" W**



**WESTERN PULASKI CO. WATER DISTRICT
SHEPOLA ROAD & TODD ROAD
WATER LINE REPLACEMENT**

M
Monarch Engineering, Inc.
556 Carlton Drive
Lawrenceburg, KY

SCIENCE HILL
QUADRANGLE

DELMAR
QUADRANGLE

SCALE: 1" = 2,000'

PROPOSED ±270 LF OF 3-INCH
WATER LINE TO REPLACE
EXISTING 3-INCH WATER LINE
LAT: 37° 08' 01.62" N
LONG: 84° 40' 21.51" W

EXISTING 3-INCH
WATER LINE

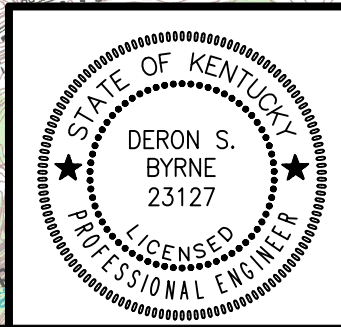
INSTALL 3-INCH
BLOWOFF ASSEMBLY

EXISTING 3-INCH
WATER LINE

CUT & CAP EXISTING
3-INCH WATER LINE

EXISTING 3-INCH
WATER LINE

200 LF OF CREEK CROSSING
FOR 3-INCH WATER LINE
VIA DIRECTIONAL BORE
LAT: 37° 08' 00.42" N
LONG: 84° 40' 20.68" W



WESTERN PULASKI CO. WATER DISTRICT
CLIFTY ROAD / BETHLEHAM ROAD
WATER LINE EXTENSION



Monarch Engineering, Inc.

556 Carlton Drive
Lawrenceburg, KY