

SERVICE LINE NOTE
 ALL TIES AND SERVICE LINES ARE TO BE LOCATED AS CLOSE AS POSSIBLE TO THEIR CURRENT LOCATION. CONTRACTOR MUST HAVE LICENSED PLUMBER TO RE-CONNECT CURB/OTHERS TO NEW TIE SETTINGS.

FREE BORE NOTE
 FREE BORES FOR DRIVEWAYS MUST BE ATTEMPTED BEFORE INSTALLING CASING PIPE.

UTILITY NOTE
 UTILITIES SHOWN HEREON WERE LOCATED FROM AGENCIES RECORDS AND ANY OTHER AVAILABLE EVIDENCE. OTHER UTILITIES THAT EXIST AND NOT BE SHOWN OR VARY FROM THESE SHOULD NOT BE GUARANTEED. SERVICE LINES SHOWN AS TO THE ORIGINAL SURFACE ARE SHOWN HEREON BUT NOT VISIBLE FROM THE SURFACE.

ROW NOTE
 THE ROW WIDTH IS 50' ALL NEW WATER MAIN MUST BE INSTALLED WITHIN THE ROW.

NO.	DATE	REVISIONS	CHKD.	APP'D.	DATE

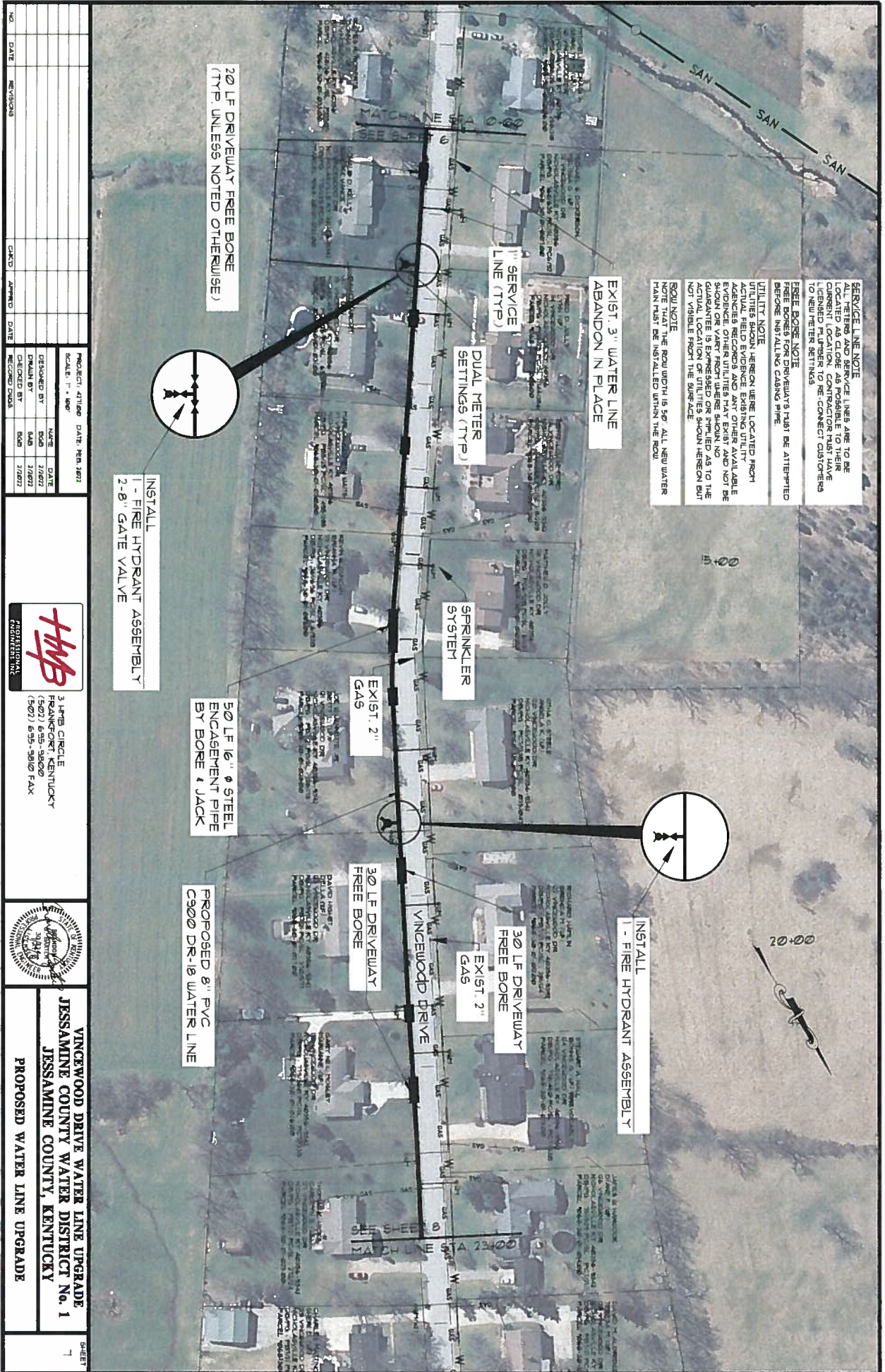
PROJECT: 4/10/08 DATE: 05/12/08
 SCALE: 1" = 40'

DESIGNED BY	NAME	DATE
DRAWN BY	NAME	DATE
CHECKED BY	NAME	DATE
RECORD DATA	DATE	

VINCEWOOD DRIVE WATER LINE UPGRADE
 JESSAMINE COUNTY WATER DISTRICT No. 1
 JESSAMINE COUNTY, KENTUCKY

PROPOSED WATER LINE UPGRADE

SHEET 6



SERVICE LINE NOTE
 SERVICE LINES ARE TO BE LOCATED AS CLOSE AS POSSIBLE TO THEIR CURRENT LOCATION. CONTRACTOR MUST HAVE LICENSED PLUMBER TO RE-CONNECT CUSTOMERS TO NEW METER SETTINGS.

FREE BORE NOTE
 FREE BORES FOR DRIVEWAYS MUST BE ATTEMPTED BEFORE INSTALLING CASING PIPE.

UTILITY NOTE
 UTILITIES SHOWN HEREON WERE LOCATED FROM ACTUAL FIELD EVIDENCE. EXISTING UTILITIES ARE SHOWN AS CLOSE AS POSSIBLE TO THEIR ACTUAL LOCATION. CONTRACTOR MUST HAVE EVIDENCE OTHER UTILITIES MAY EXIST AND NOT BE SHOWN OR VARY FROM WHERE SHOWN. NO GUARANTEE IS EXPRESSED OR IMPLIED AS TO THE ACTUAL LOCATION OF UTILITIES SHOWN HEREON BUT AS VISIBLE FROM THE SURFACE.

ROW NOTE
 NOTE THAT THE ROW WIDTH IS 50'. ALL NEW WATER MAINS MUST BE INSTALLED WITHIN THE ROW.

20 LF DRIVEWAY FREE BORE
 (TYP. UNLESS NOTED OTHERWISE)

EXIST'G 3" WATER LINE
 ABANDON IN PLACE

1" SERVICE
 LINE (TYP)

DUAL METER
 SETTINGS (TYP)

SPRINKLER
 SYSTEM

EXIST'G 2"
 GAS

50 LF 16" Ø STEEL
 ENCASUREMENT PIPE
 BY BORE & JACK

INSTALL
 1" FIRE HYDRANT ASSEMBLY
 2-8" GATE VALVE

INSTALL
 1" FIRE HYDRANT ASSEMBLY

EXIST'G 2"
 GAS

30 LF DRIVEWAY
 FREE BORE

PROPOSED 8" PVC
 C900 DR-18 WATER LINE

NO.	DATE	REVISION	DATE	APPROVED	DATE

PROJECT	DATE	REV.	DATE
AT1800	1/18/07	1	1/18/07

SCALE	DATE	REV.	DATE
1" = 50'	1/18/07	1	1/18/07

THB PROFESSIONAL ENGINEERING

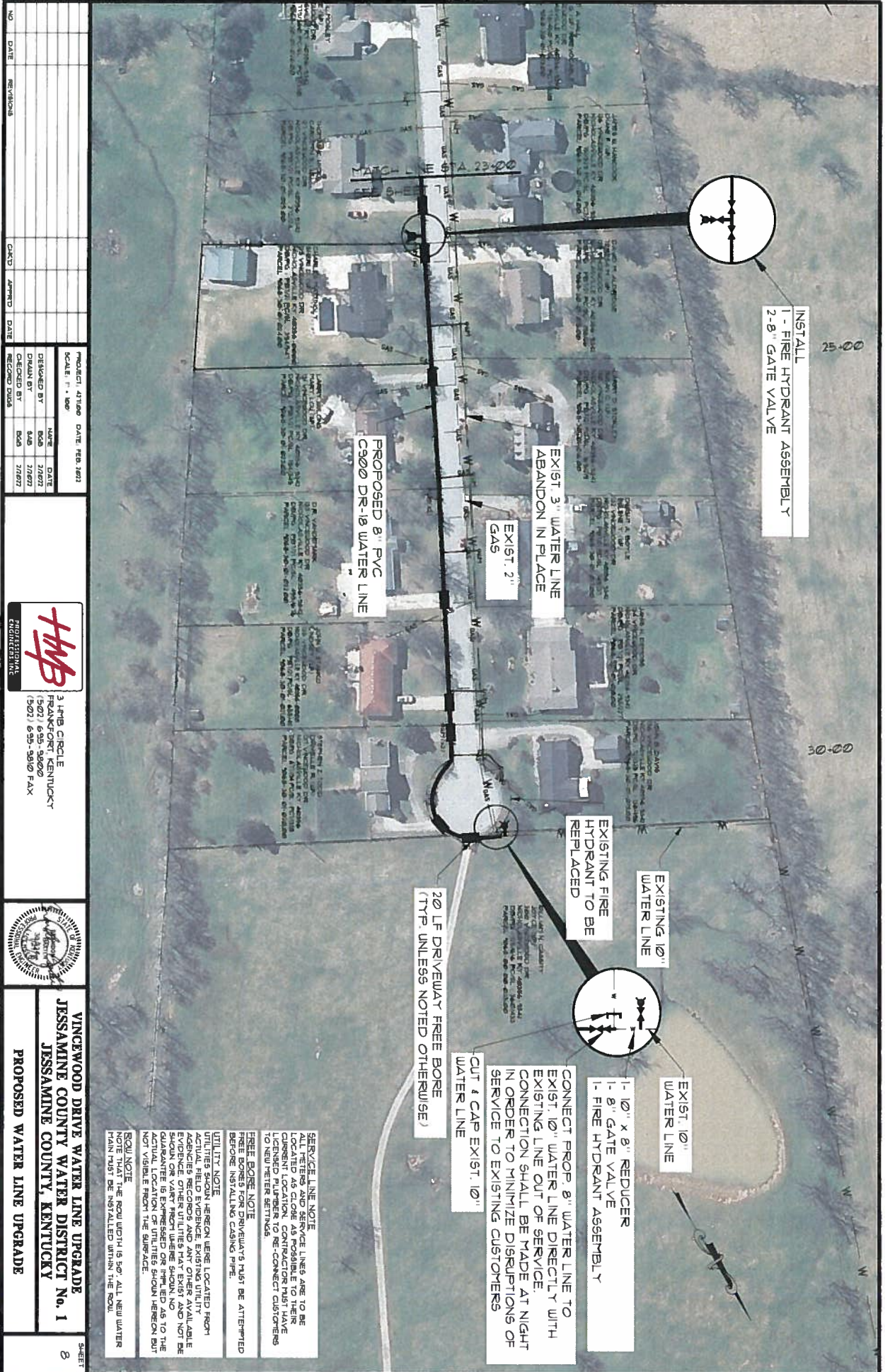
3 THB CIRCLE
 FRANKFORT, KENTUCKY
 (502) 635-5800
 (502) 635-5810 FAX



VINCEWOOD DRIVE WATER LINE UPGRADE
 JESSAMINE COUNTY WATER DISTRICT No. 1
 JESSAMINE COUNTY, KENTUCKY

PROPOSED WATER LINE UPGRADE

SHEET 7



NO.	DATE	REVISIONS	CAUSE	APPROVED	DATE

PROJECT ACTION	DATE	REV.	BY
DESIGNED BY	BOB	2/6/27	BOB
DRAWN BY	BOB	2/6/27	BOB
CHECKED BY	BOB	2/6/27	BOB
RECORD BOOK			

SCALE: 1" = 40'

HMB PROFESSIONAL ENGINEERS

3418 CIRCLE
FRANKFORT, KENTUCKY
(502) 635-5800 FAX
(502) 635-5800 FAX



VINCEWOOD DRIVE WATER LINE UPGRADE
JESSAMINE COUNTY WATER DISTRICT No. 1
JESSAMINE COUNTY, KENTUCKY

PROPOSED WATER LINE UPGRADE

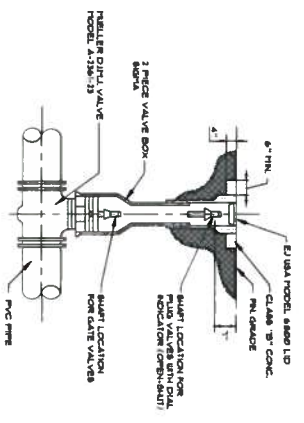
SHEET 8

SERVICE LINE NOTE
ALL METERS AND SERVICE LINES ARE TO BE LOCATED AT THE CURB OR SIDEWALK. CONTRACTOR MUST HAVE LICENSED PLUMBER TO RE-CONNECT CUSTOMERS TO NEW METER SETTINGS.

FREE BORE NOTE
FREE BORES FOR DRIVEWAYS MUST BE ATTEMPTED BEFORE INSTALLING CASING PIPE.

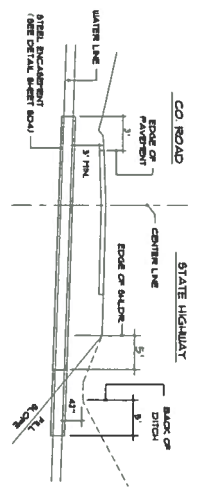
UTILITY NOTE
UTILITIES SHOWN HEREON WERE LOCATED FROM ACTUAL FIELD EVIDENCE. EXISTING UTILITY LOCATIONS RECORDS AND ANY OTHER AVAILABLE RECORDS SHOULD BE REFERRED TO. CONTRACTOR SHOULD OR VERIFY FROM UNDERGROUND NOT BE GUARANTEED OR IMPLIED AS TO THE ACTUAL LOCATION OF UTILITIES SHOWN HEREON BUT NOT VISIBLE FROM THE SURFACE.

ROW NOTE
NOTE THAT THE ROW WIDTH IS 50'. ALL NEW WATER MAIN MUST BE INSTALLED WITHIN THE ROW.

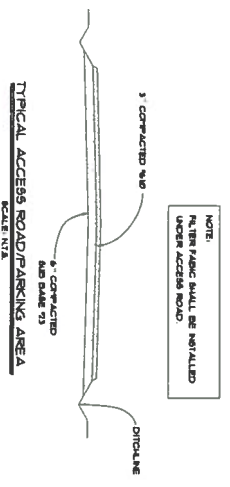


- NOTES:
- NO EXTERNA MAY ALLOW FOR CONCRETE COLLAR
 - CONCRETE COLLARS SHALL BE FORMED IN THE FIELD AND POWERED IN PLACE. PRE-CAST/CAST COLLARS ARE NOT ACCEPTABLE.
 - VALVE COLLARS IN TRAFFIC AREAS SHALL BE 6" MIN THICKNESS.
 - VALVE COLLARS SHALL BE 6" MIN THICKNESS.
 - 6" x 48" x 14" PIPE MAY BE USED AS NO. 1 AND LEFT IN PLACE.
 - VALVE COLLARS SHALL BE 6" MIN THICKNESS.
 - VALVE COLLARS SHALL BE 6" MIN THICKNESS.
 - COLLAR SHALL BE POWERED ON THE ROADWAY TO PERMIT REMOVAL AND RE-INSTALLMENT.

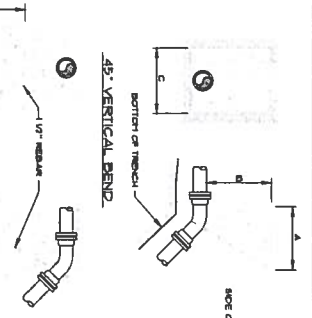
TYPICAL VALVE SETTING
SCALE N12



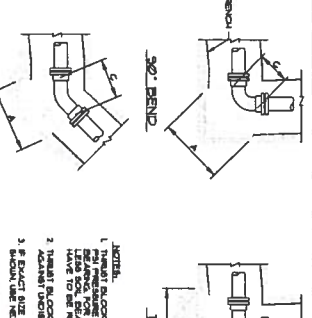
TYPICAL ROAD CROSSING
SCALE N12



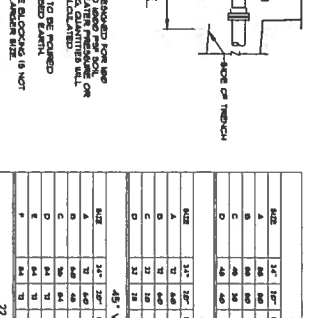
TYPICAL ACCESS ROAD/PARKING AREA
SCALE N12



45° VERTICAL BEND
SCALE N12

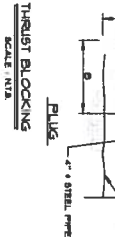


90° BEND
SCALE N12



45° VERTICAL BEND
SCALE N12

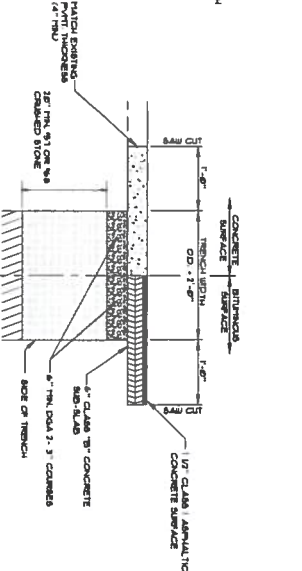
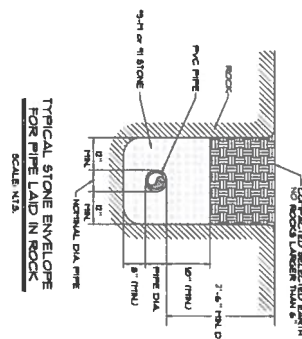
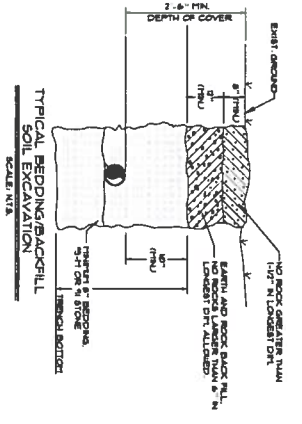
NOTE:
ROTAC-STYLE GRIP RINGS MAY ONLY BE INSTALLED ON PIPE DIAMETER 8" OR LESS. REGALUS-STYLE RESTRAINTS ARE REQUIRED FOR ALL PIPE LARGER THAN 8" DIAMETER.



THRUST BLOCKING
SCALE N12



TYPICAL SECTION
SCALE N12



DETAIL - PAVEMENT REPLACEMENT
(NON-STATE MAINTAINED STREETS/ROADS)
SCALE N12

NO	DATE	REVISIONS	BY	CHECKED	DATE
1	1/11/17	REVISE VALVE TYPICAL WATER MAIN	CAB	CAB	1/11/17
2	1/17/17	TRAC NOTE REVISIONS	CAB	CAB	1/17/17
3	2/20/17	TRAC NOTE REVISIONS	CAB	CAB	2/20/17

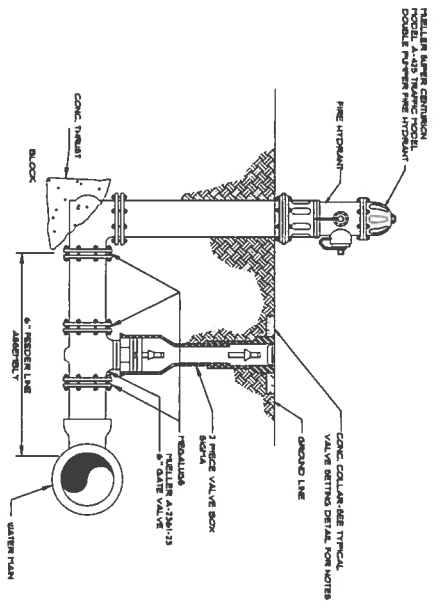
PROJECT	4118D	DATE	FEB. 2011
SCALE	N12		
DESIGNED BY	CAB	DATE	
DRAWN BY	SAB		
CHECKED BY	CAB		
RECORD DRAW			

3 LAMB CIRCLE
FRANKFORT, KENTUCKY
(502) 655-5800
(502) 655-5800 FAX



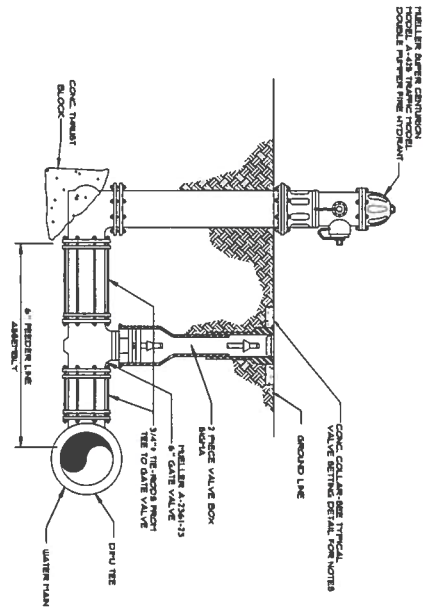
JESSAMINE COUNTY WATER DISTRICT No. 1
JESSAMINE COUNTY, KENTUCKY
STANDARD DETAILS
SHEET 5D1

SIZE	12"	18"	24"	30"	36"	42"	48"	54"	60"	66"	72"	78"	84"	90"	96"	102"	108"	114"	120"
A	12	18	24	30	36	42	48	54	60	66	72	78	84	90	96	102	108	114	120
B	12	18	24	30	36	42	48	54	60	66	72	78	84	90	96	102	108	114	120
C	12	18	24	30	36	42	48	54	60	66	72	78	84	90	96	102	108	114	120
D	12	18	24	30	36	42	48	54	60	66	72	78	84	90	96	102	108	114	120



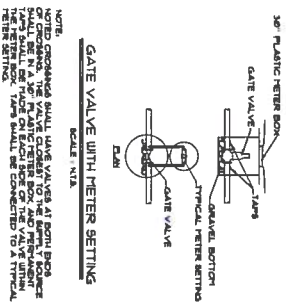
OPTION 1
FIRE HYDRANT (2 NOZZLE)
SCALE: N1/4"

NOTE:
ALL HYDRANTS SHALL BE ADJUSTED
TO GRADE AND FACE ROAD.



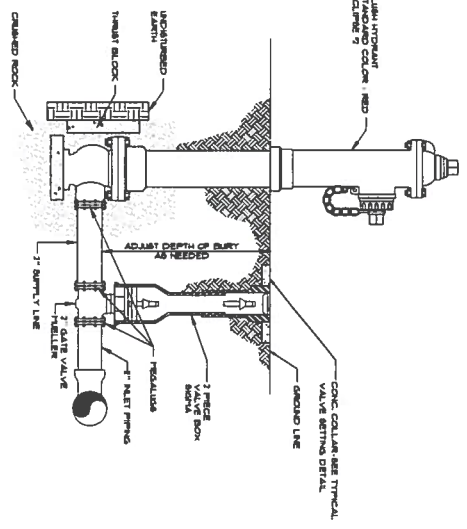
OPTION 2
FIRE HYDRANT (2 NOZZLE)
SCALE: N1/4"

NOTE:
ALL HYDRANTS SHALL BE ADJUSTED
TO GRADE AND FACE ROAD.



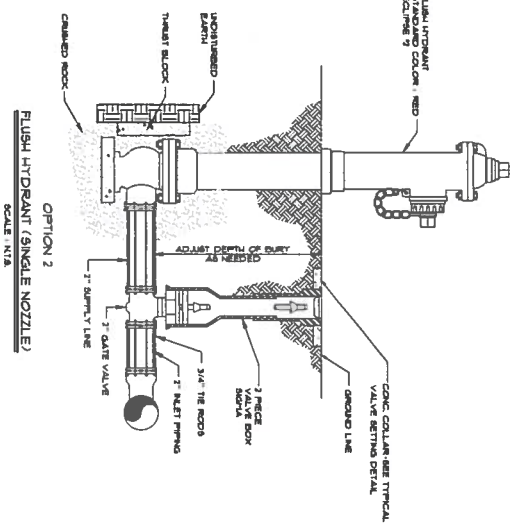
GATE VALVE WITH METER SETTING
SCALE: N1/4"

NOTE:
GATED OR GATE VALVE SHALL BE SET IN A 30\"/>



OPTION 1
FLUSH HYDRANT (SINGLE NOZZLE)
SCALE: N1/4"

NOTES:
1. MANUFACTURED BY HUMPHREYS
EQUIPMENT CO.
2. MET SHALL BE 7\"/>



OPTION 2
FLUSH HYDRANT (SINGLE NOZZLE)
SCALE: N1/4"

NOTES:
1. MANUFACTURED BY HUMPHREYS
EQUIPMENT CO.
2. MET SHALL BE 7\"/>

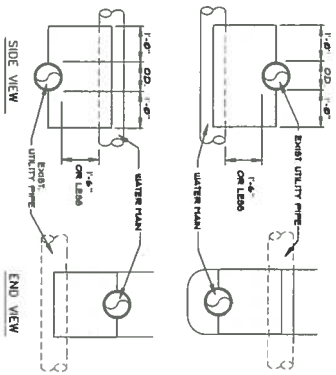
NO.	DATE	REVISIONS	BY	CHKD	APPRD	DATE	RECORD DRAW
1	T/MT	REVISE VALVE MODEL NUMBER	CAB	T/MT			
2	T/MT	ADD HYDRANT NOTE	CAB	T/MT			

THWB
PROFESSIONAL ENGINEERS

3 LAMB CIRCLE
FRANKFORT, KENTUCKY
(502) 695-5800
(502) 695-5810 FAX

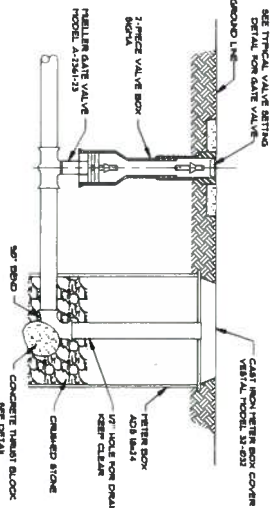
JESSAMINE COUNTY WATER DISTRICT No. 1
JESSAMINE COUNTY, KENTUCKY

- NOTES
1. CONCRETE BACKCASTING SHALL BE MADE UPON VERTICAL CLEARANCE BETWEEN WATER MAIN AND UTILITY PIPES IN 3" OR LESS OF SPACING. CLEARANCE SHALL BE MAINTAINED THROUGHOUT THE ENTIRE LENGTH OF THE SANITARY SEWER LINE.
 2. WHEN ENCOUNTERING SANITARY SEWER LINE OR FIELD DRAIN WITH SEPARATION LESS THAN 6" VERTICAL, OR 6" HORIZONTAL, CONCRETE BACKCASTING SHALL BE MADE AGAINST UTILITY FROM DIRECTION OF SANITARY SEWER TO MAINTAIN CLEARANCE.
 3. CONCRETE BACKCASTING IS NOT A SEPARATE PAY ITEM.

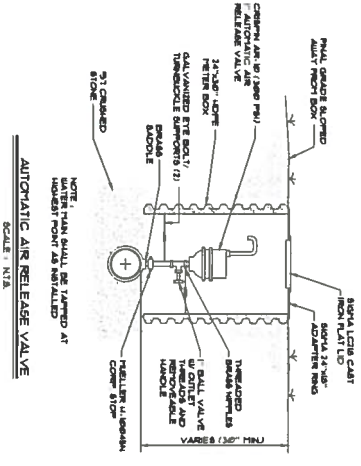


SANITARY SEWER LINE CROSSING / ENCASEMENT SCALE: N12

NOTE: THE UPRIGHT PIPE SHALL INCLUDE BRICK CHAMBER STONE / TERRAZZO. THE PIPE SHALL BE PAID FOR AT THE CONTRACTOR'S PRICE.



BLIND OFF ASSEMBLY SCALE: N12



AUTOMATIC AIR RELEASE VALVE SCALE: N12

GENERAL NOTES

CONTRACTOR/DEVELOPER SHALL BE SOLELY RESPONSIBLE FOR COMPLIANCE WITH ALL APPLICABLE STATEMENT REGULATIONS, INCLUDING BUT NOT LIMITED TO:

POBTS: USE EITHER WOOD OR STEEL, GREATER THAN 4 FEET IN HEIGHT FOR HANDHOOD PROVIDE A MINIMUM 1/2\"/>

UPPER OR UNLINED UPRIGHT FABRIC CONDUIT TO SECTION 805. OR ALL UPRIGHT FABRIC WITH 4\"/>

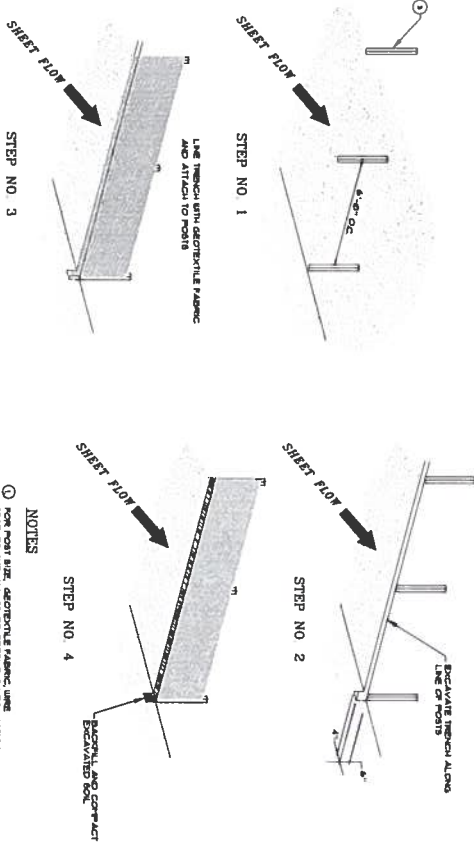
DEGRADABLE FABRIC CONDUIT TO MATCH TO 2\"/>

FABRIC WITH A HEIGHT OF 3 FEET.

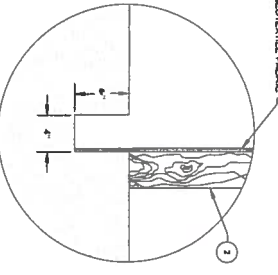
PAINT/PAVE: USE NO. 3, ONE NON-LOOSE WIRE STAPLES AND/OR FABRIC TIES THAT CONFORM TO SUBSECTION 805.11.1.1 OF THE TRANSPORTATION CONTRACTOR'S OF HUBBARD'S STANDARD PROVISIONS FOR ROAD AND BRIDGE CONSTRUCTION.

POBTS SHALL COMPLY WITH ALL APPLICABLE STATE TRANSPORTATION CONTRACT DEPARTMENT OF HUBBARD'S STANDARD LATEST EDITION SECTION 811.

SCALE SHALL BE REVISED AS REQUESTED BY THE ENGINEER OR OTHER AGENCY.



- NOTES
1. FOR POBTS USE 4\"/>
 - 2. USE THE CONTRACTOR'S STANDARD FOR ROAD AND BRIDGE CONSTRUCTION OR CALL AT 811/800/452-4524 FOR MORE INFORMATION.
 - 3. POBTS SHALL BE 1\"/>



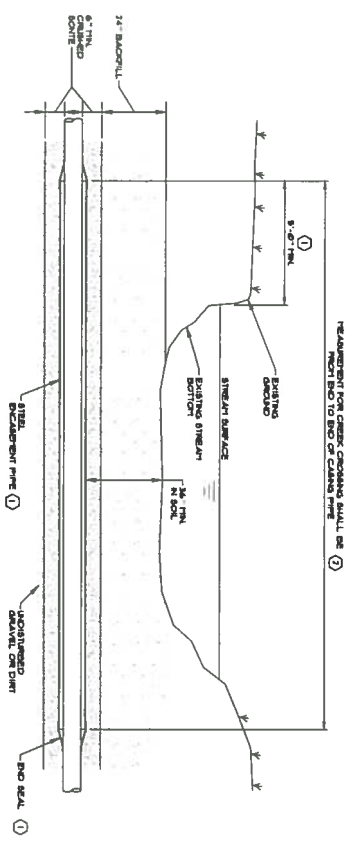
SECTIONAL DETAIL SILT FENCE DETAILS SCALE: N12

NO.	DATE	REVISIONS	BY	CHKD	APP'D	DATE
1	1/20/21	ADD AIR RELEASE DETAIL	CAS	CAS	1/20/21	
2	1/20/21	REVISE VALVE DETAIL NUMBER	CAS	CAS	1/20/21	

PROJECT:	DATE:	SCALE:
47180	1/20/21	N12

3 HUBBARD'S
FRANKFORT, KENTUCKY
(502) 635-3800
(502) 635-3810 FAX

JESSAMINE COUNTY WATER DISTRICT No. 1
JESSAMINE COUNTY, KENTUCKY
STANDARD DETAILS
SHEET 5D3

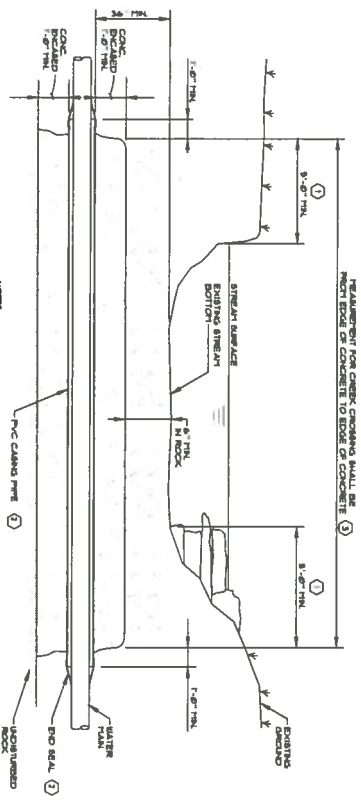


REINFORCEMENT FOR CONCRETE CROSSING SHALL BE FROM END OF CONCRETE TO END OF CONCRETE

NOTE:
 (1) REFER TO DETAIL - ENCASEMENT PIPE SPACER
 (2) 3" LIFT PIERCE

TYPE "A" STREAM CROSSING
 DETAIL ON DIRT BOTTOM W/ GRAVEL CAR

SCALE: 1"=12'

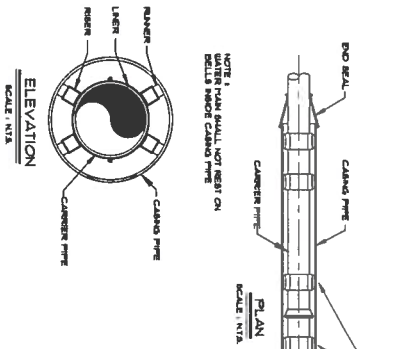


REINFORCEMENT FOR CONCRETE CROSSING SHALL BE FROM END OF CONCRETE TO END OF CONCRETE

NOTE:
 (1) CONCRETE TO BE BUILT 1'-0" + SETBACK POINT OF BANK
 (2) REFER TO DETAIL - ENCASEMENT PIPE SPACER
 (3) 3" LIFT PIERCE

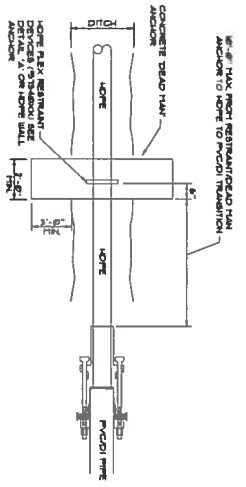
TYPE "B" STREAM CROSSING
 SOLE ROCK BOTTOM CONCRETE CAR

SCALE: 1"=12'



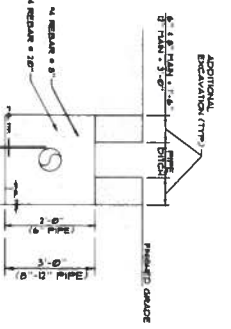
ENCASEMENT PIPE AND SPACER

SCALE: 1"=12'



HDPE CONNECTION TO PVC/DIP

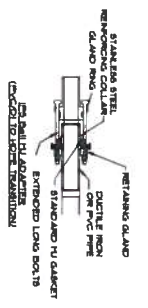
SCALE: 1"=12'



SECTION A-A

SCALE: 1"=12'

CHAMBER PIPE (INCHES)	SPACER (INCHES)	PIER (INCHES)
36	24	36
42	30	42
48	36	48
54	42	54
60	48	60
66	54	66
72	60	72



DETAIL A-A

SCALE: 1"=12'

NOTE:
 6" x 6" x 3-HOUR FLEX RESTRAINTS
 6" x 6" x 3-HOUR FLEX RESTRAINTS
 6" x 6" x 3-HOUR FLEX RESTRAINTS

HDPE DIRECTIONAL BORE DETAIL

SCALE: 1"=12'

NO.	DATE	REVISIONS	DESIGNED BY	CHECKED BY	DATE
1	1/20/21	ADD NOTE TO ENCASEMENT PIPE AND SPACER DETAIL	CAS	CAS	1/20/21



3 HWB CIRCLE
 FRANKFORT, KENTUCKY
 (502) 635-3600
 (502) 635-3610 FAX

JESSAMINE COUNTY WATER DISTRICT No. 1
 JESSAMINE COUNTY, KENTUCKY
 STANDARD DETAILS
 SHEET 5D4