



thoroughbred solar

## **Exhibit 6**

---

# **Report of Public Involvement Program**

## **EXHIBIT 6 – REPORT OF PUBLIC INVOLVEMENT PROGRAM ACTIVITIES**

*A complete report of the applicant's public involvement program activities undertaken prior to the filing of the application, including:*

- 1. The scheduling and conducting of a public meeting in the county or counties in which the proposed facility will be constructed at least ninety (90) days prior to the filing of an application, for the purpose of informing the public of the project being considered and receiving comment on it; and*
- 2. Evidence that notice of the time, place, and location of the meeting was published in the newspaper of general circulation in the county, and that individual notice was mailed to all owners of property adjoining the proposed project at least two (2) weeks prior to the meeting; and*
- 3. Any use of media coverage, direct mailing, fliers, newsletters, additional public meetings, establishment of a community advisory group, and any other efforts to obtain local involvement in the siting process. KRS 278.708(2)(f).*

**Respondent: Rob Kalbouss**

### **Public Outreach Prior to the Public Information Meeting**

Thoroughbred Solar has been working closely with the community near the proposed Project since spring of 2020, beginning with contacts with potential participating landowners. In October 2021, a presentation was given to the Judge Executive, District 1 Magistrate, and a county economic development representative to generally introduce the Project (Attachment A-1) and understand the local permitting framework. It was confirmed through these contacts that no local or county zoning exists, and initial communication channels were established to learn about community priorities and receive feedback.

Through December 2021, as ongoing feasibility and Project design work continued, Project representatives met with the local Chamber of Commerce to introduce the Project. Thoroughbred Solar became a Chamber of Commerce member a few weeks later. In response to the devastating tornado experienced in Kentucky in December, Thoroughbred Solar participated in community support activities, including sponsorship of relief efforts (Attachment A-2).

In January 2022, using a slightly updated version of the presentation used in October, a formal introduction of the Project was made at a public meeting before the Hart County Fiscal Court. Similar materials were used, with updated timeline information. Project field studies and design activities continued throughout this period. Thoroughbred Solar representatives made introductions to the Hart County Schools Superintendent as well as representatives of the Hart County Fair during this time.

In March 2022, the Project launched its website, [www.thoroughbredsolar.com](http://www.thoroughbredsolar.com), and continues to use it to provide regular updates regarding Project status for the community throughout permitting and construction. A Project-specific phone number (800.342.9853) and email address ([info@thoroughbredsolar.com](mailto:info@thoroughbredsolar.com)) were also created around that same time and remain active and advertised on the Thoroughbred website. These contact options allow community members to reach out to the Thoroughbred Project team at any time throughout the development process with questions or comments.

Thoroughbred Solar further broadened involvement and outreach in early April 2022. This included having Project representatives visit the 35 closest residences in an attempt to engage in person to introduce the Project. The materials provided in Attachment A-3 were provided to the residents with whom conversations occurred. Where no contact was able to be made, Attachment Thoroughbred Solar left a “door hanger” behind to welcome outreach to the Project for additional information. After Project representatives made initial contact, Rob Kalbouss, the Senior Development Manager, followed up with several individuals at their request to answer certain questions in greater detail.

In early May 2022, a Facebook page was launched for the Project, [https://www.facebook.com/ThoroughbredSolar/?ref=py\\_c](https://www.facebook.com/ThoroughbredSolar/?ref=py_c), (Attachment A-4) that provided

general Project information, details regarding the then-upcoming Public Information Meeting, and was intended as a platform for ongoing information sharing. The Facebook page continues to be well-utilized by the public and allows individuals to interact directly with the Project team members publicly or privately. Numerous follow-up communications and/or visits have resulted.

### **Notice of and Summary of Public Information Meeting**

Thoroughbred Solar properly noticed and, on April 27, 2022, held a Public Information Meeting (“PIM”) in Hart County, Kentucky. On April 13, 2022, Thoroughbred Solar published public notice of the PIM in the local newspaper of general circulation, *The Hart County News-Herald* (Attachment A-5), sent notice letters to abutting landowners (Attachment A-6), and sent additional communication via post card to local residents (Attachment A-7).

The PIM included displays of the materials (Attachment A-8) and allowed for one-on-one conversations between interested parties (including local residents) and Project representatives to answer questions about the Project and allow for feedback. The Project team heard concerns raised about construction traffic. This feedback resulted in a modification to the design to include an additional entrance to the Project Site for a total of five, to increase the distribution of traffic across the site. Several attendees had questions about the fate of the 23-acre woodlot on the southern parcel of the Project Area. They were assured this area was being excluded from development. The Project team learned about the upcoming Hart County Fair from a member of the Fair’s Board of Directors who attended the PIM, which led to Thoroughbred Solar’s involvement in this important community event in July 2022. People expressed interest in employment opportunities that the Project will create during construction and operations. Additionally, several PIM attendees expressed interest in the potential to participate as a lessor if a second phase were to be initiated.

Although the PIM sign-in sheet (Attachment A-9) indicates 13 of the attendees chose to sign in, a total of approximately 40 community members attended the PIM.

### **Ongoing Public Outreach**

Later in April 2022, the Senior Development Manager introduced himself at a local School Board meeting. In addition, Thoroughbred Solar began a relationship with the Hart County Cattlemen's Association in late April 2022 through an introductory meeting attended by approximately 60 members. There, Mr. Kalbouss made a presentation about the Project similar to Attachment A-1 with updated information. The Project deemed forming a relationship with this prominent community organization a high priority because two of the Project's participating landowners will continue to raise cattle on adjacent property and because the organization supports a critical component of Hart County's economy. Thoroughbred Solar continues to consider contributions that will support ongoing agriculture in Hart County as reflected by this group.

Thoroughbred Solar's pre-application community activities have also included (in conjunction with the Chamber of Commerce) participating in the May 2022 Imagination Library Fun Fest to support providing free books to local children (Attachment A-10) and holding a presentation in mid-August 2022 for approximately 25 members of the community to solicit feedback at its Beyond Breakfast event (Attachment A-11).

As the Project neared time to file its Application, it also sought to identify other stakeholders in the community that would be important for engagement, including the following with whom meetings have been held:

- Hart County Historical Society – Thoroughbred Solar representatives were given a tour of the Battle of the Bridge Historic Preserve while discussing the Project in June 2022. Shared interests in the history of the area resulted in Thoroughbred Solar sponsoring a 5K race in June 2022 and sponsoring an October awards event (Attachment A-12), and developing plans to notify local representatives as a part of its Unanticipated Discoveries Plan that will be implemented during construction.

- Hart County Fair – Thoroughbred Solar was a sponsor of the fair, held in early July 2022, and also had a staffed booth to provide information and answer questions about the Project (Attachment A-13).
- Dutch Country Safari Park – A meeting was held in July 2022 to ensure awareness of the Project and the intention to work cooperatively with this local recreational neighbor.
- Local churches – A meeting was held with leadership of the Rowlett’s Baptist Church in early September 2022, and outreach is ongoing to schedule a meeting with the Kingdom Hall of Jehovah’s Witnesses located nearby.
- University of Kentucky College of Agriculture, Food and Environment Cooperative Extension Service – Thoroughbred Solar met in September 2022 and discussed with this Munfordville-based organization a range of themes, including the potential for coordination on the Project site’s planned vegetation, as well as use of the Project – once operational – as a part of the STEM curriculum.
- Hart County Sheriff – In October 2022, a Project representative met with the Sheriff to make an introduction, answer questions about the Project and express interest in working together on an emergency response plan at a later date, closer to construction.
- Follow-up continues with neighbors and members of the community, as requested, and Thoroughbred Solar continues to meet with local potential vendors or service providers.

As the various meetings have occurred, Thoroughbred Solar has responded to issues by making design changes in the Project, including, for example:

- Addition of multiple points of access/egress to limit traffic distributed on any one local roadway;
- Increase in setback distances of solar arrays from residences;
- Increase of setback distances of inverters from residences;
- Adjusting the location and size of the footprint for the Utility Switchyard and Project Substation, and reorienting them such that the equipment with a louder sound profile is more interior to the Project Area; and
- Ongoing enhancements to layout spacing and landscaping plans.

Communication and soliciting of feedback will continue throughout the permitting process.

Thoroughbred Solar intends to issue a quarterly newsletter to abutting landowners, participating

landowners, and other key stakeholders to provide status updates on project milestones and community involvement efforts. In addition, Facebook will continue to be used both to communicate information and receive feedback.

Prior to construction, Thoroughbred Solar intends to use these tools to provide notifications and information regarding various construction phases, as well as clearly specify contacts for providing comments and/or complaints that should be addressed. Once constructed, Thoroughbred Solar intends to continue working with the educational and employment community, as well as such organizations as 4-H, Future Farmers of America, and those already engaged to continue as a meaningful contributor to the community.

Attachment A (44 pages), consisting of:

- Attachment A-1 (17 pages) – Hart County Judge Executive Meeting October 2021
- Attachment A-2 (1 page) - Hart County Disaster Relief
- Attachment A-3 (2 pages) - Thoroughbred Solar Door Knocking Fact Sheet
- Attachment A-4 (1 page) - Thoroughbred Solar Facebook Landing Page
- Attachment A-5 (2 pages) - Notice of PIM Published in *The Hart News-Herald*
- Attachment A-6 (3 pages) - Sample Landowner Notice of PIM and Mailing List
- Attachment A-7 (1 page) - Thoroughbred Solar PIM Postcard
- Attachment A-8 (10 pages) - Thoroughbred PIM Posters & Visual Simulations
- Attachment A-9 (2 pages) Thoroughbred PIM Signup Sheets
- Attachment A-10 (1 page) - Imagination Library Fun Fest
- Attachment A-11 (1 page) - Hart County Chamber of Commerce Beyond Breakfast
- Attachment A-12 (2 pages) - Hart County Historical Society Roy A. Cann Dinner
- Attachment A-13 (1 page) - Thoroughbred Hart County Fair Sponsorship



thoroughbred solar

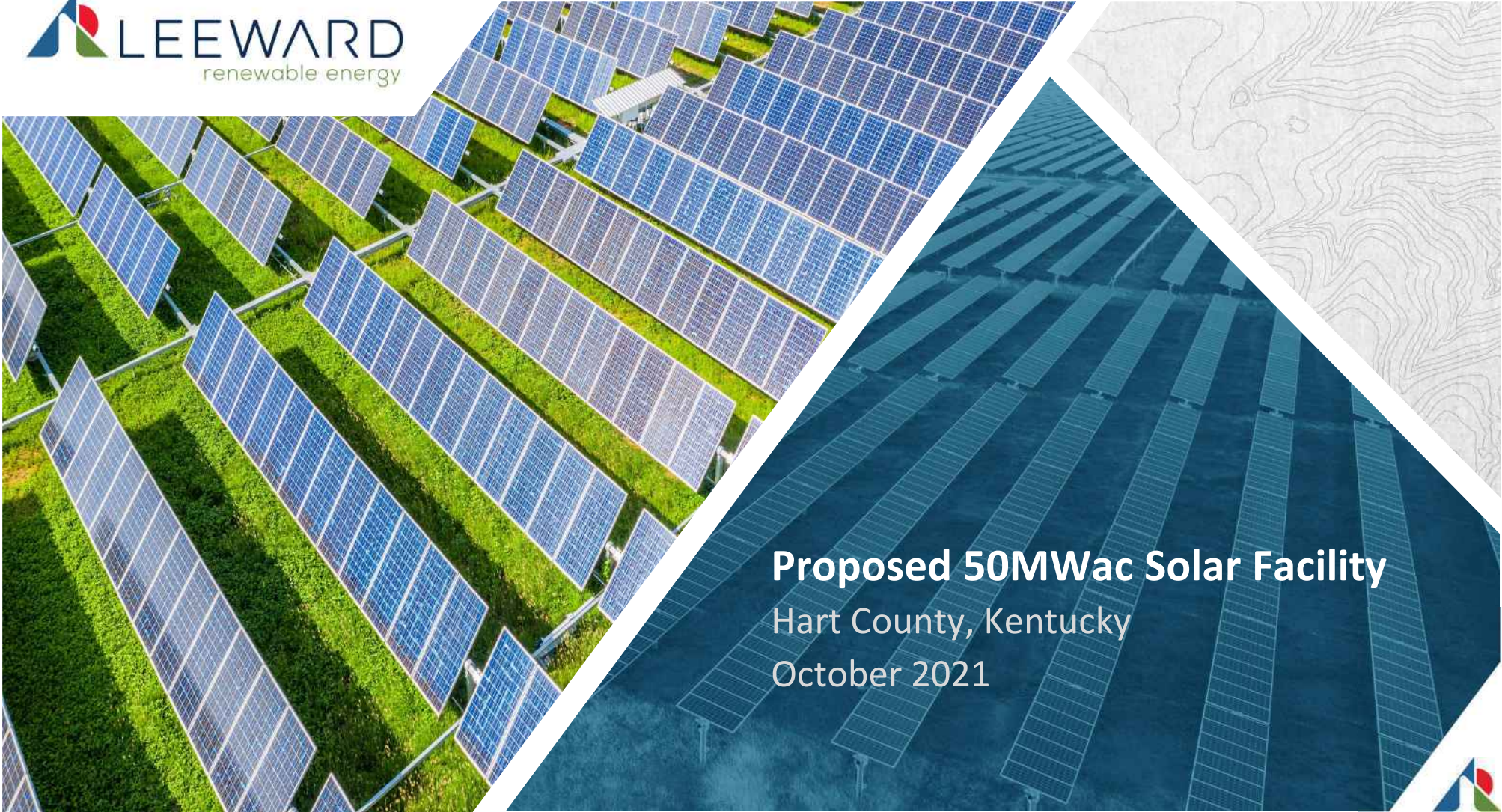
# **Attachment A**

---

# **Public Involvement Activities**

**Exhibit 6 – Report of Public Involvement Program**





**Proposed 50MWac Solar Facility**  
Hart County, Kentucky  
October 2021



# AGENDA



1. Introduction

2. How to develop and build a utility-scale solar facility



# WHO WE ARE – LEEWARD RENEWABLE ENERGY



Leading developer, owner and operator of U.S. renewable generation projects.

22 renewable energy facilities across nine states.

2,000+ Megawatts (MW) of renewable energy capacity.

17 Gigawatts (GW) under development, spanning over 100 projects.

Headquartered in Dallas, TX with regional offices in Chicago, IL, Houston, TX, and San Francisco, CA.

Portfolio company of OMERS Infrastructure, one of Canada's largest pension plans.

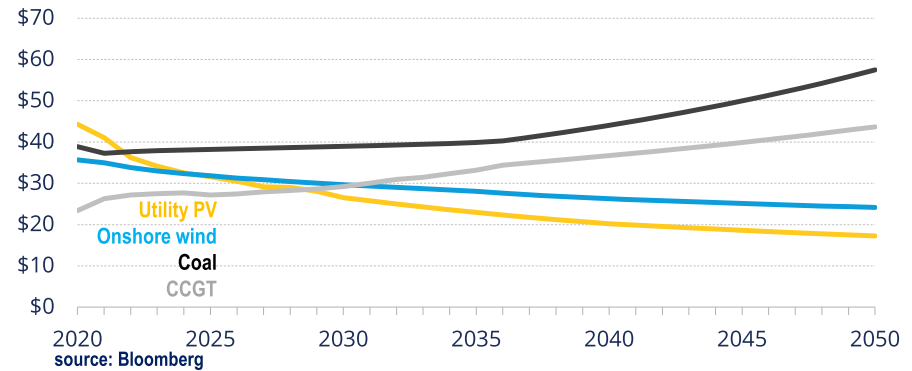


# WHY UTILITY SOLAR?

## Cost Competitiveness

- Levelized cost of energy is trending below running costs of traditional forms of generation (ref: Exhibit 2)
- Rapid technological advancement and efficiency gains
  - Bi-facial modules
  - Single-axis tracking
  - Over 20% increase in mono crystalline module efficiency within the past 8 years
- Decreasing system costs – over 70% in the past decade

Levelized cost per MWh of solar (pv) and wind and running cost of natural gas and coal

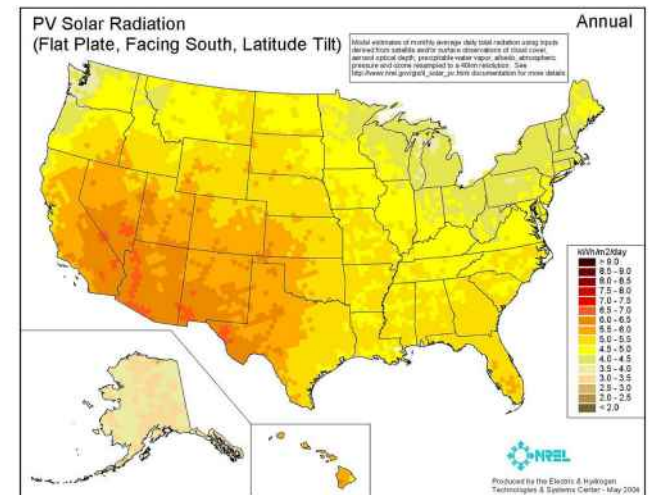
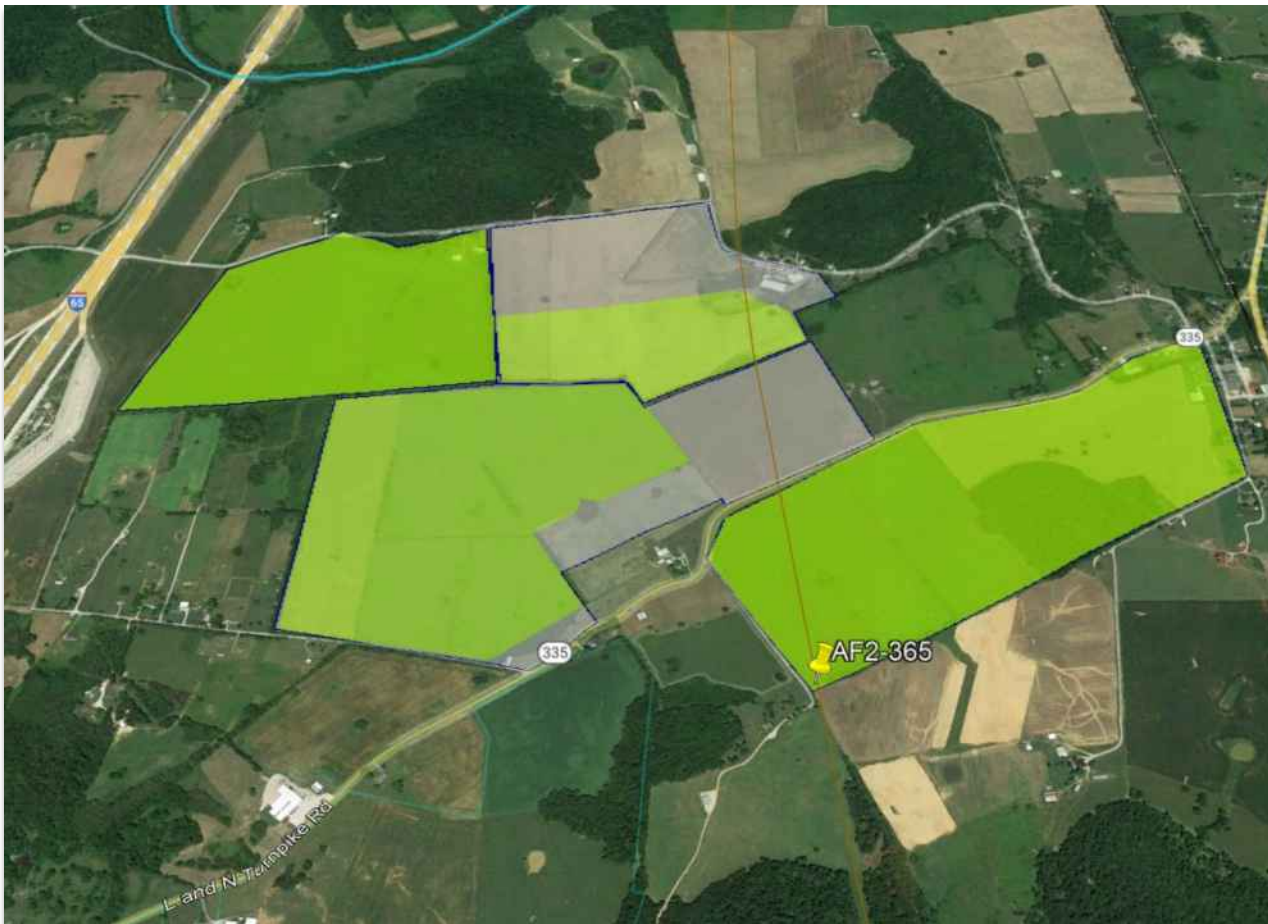


## Minimal impact

- No need for permanent water or sewer systems
- Negligible acoustic impacts at property boundaries
- No operational GHG, other emissions or noxious odors
- Negligible operational traffic



# SITE SELECTION | option to lease 450 acres



## Site Selection Criteria:

- High-quality solar resource
- Access to PJM transmission system
- Flat to gently rolling topography
- Minimal environmental and other constraints
- Willing landowners



# BENEFITS TO HART COUNTY



## Long-term Predictable Income

- 100s of thousands of dollars in new tax revenues
- 30-40 year project lifetime
- Landowner rent



## Employment opportunities

- Hundreds of temporary construction jobs
- Temporary jobs induced by construction
- Long-term operations and maintenance jobs



## Community Involvement

- Educational Programs
- Corporate Giving Campaigns
- Sponsorships



# HOW TO BUILD A SOLAR FACILITY



# SOLAR DEVELOPMENT & PROJECT LIFECYCLE OVERVIEW



## Site Selection

- Proximate access to electrical transmission system
- Electrical injection capability
- Suitable acreage – size, topography, etc.

## Electrical Interconnection

- Multi-year study process resulting in an interconnection service agreement and ultimately backfeed of power to the grid



## Power Offtake

- Long-term Power Purchase Agreements (PPAs) with creditworthy counterparties (e.g. utilities, large industrial users, etc.)
- The PPA guarantees a revenue stream that enables the financing of the project

## Permitting

- Certificate of Environmental Compatibility and Public Need (CECPN) and other discretionary actions
- Grading & building permits

## Construction

- Approximately 9–18-month duration



## Operations

- ~30-40+ years

## Decommissioning

- Restoration to pre-existing condition





# COMPONENTS

## PV (photovoltaic) Modules

- Thin solar cells are adjoined together and affixed to glass and metal-framed modules
- Typically, ~3.5' x 7' in size
- Durable and are designed to resist harsh weather conditions and corrosion
- Designed to absorb sunlight – studies have shown that they are less reflective than water & standard glass

## Mounting System & Trackers

- The modules are mounted on steel frames or trackers, which are supported by driven vertical steel posts
- The system is aligned in either east-west or north-south rows, depending on use of fixed-tilt (E-W) or tracking arrangements (N-S) to maximize the amount of sunlight the system can absorb

## Collection System

- The collection system consists of electrical cables and combiners that collect electricity from the solar modules, delivers it to inverters and medium voltage transformers, and ultimately delivers it to the facility substation

## Access and Perimeter Fencing

- Solar facilities contain accessways that provide vehicular ingress & egress to key components of the facility for operations and maintenance
- The facility is enclosed with fencing to secure the equipment contained within the site



*Varies by project size & location, but typically takes ~9-18 months to build a utility-scale PV facility*

## Order of Operations

1. Site preparation – includes installing stormwater controls, security fencing, access roads, & laydown areas
2. Underground installation of medium-voltage DC and AC collection cables
3. Install solar field pile foundations (typically installed to a depth of ~7 – 10') and equipment pad foundations
4. Install module racking and modules and complete DC connections
5. Install central inverters and medium voltage transformers throughout the site along with plant control system
6. Install project high voltage substation and transmission line to interconnection point
7. Complete O&M building and communications systems install



# CONSTRUCTION – FOUNDATION INSTALLATION



Friction piles are used to secure module racking and tracking system



Final install of piles



# CONSTRUCTION – TRACKING SYSTEM, COLLECTION, & WIRING



**Tracking System**



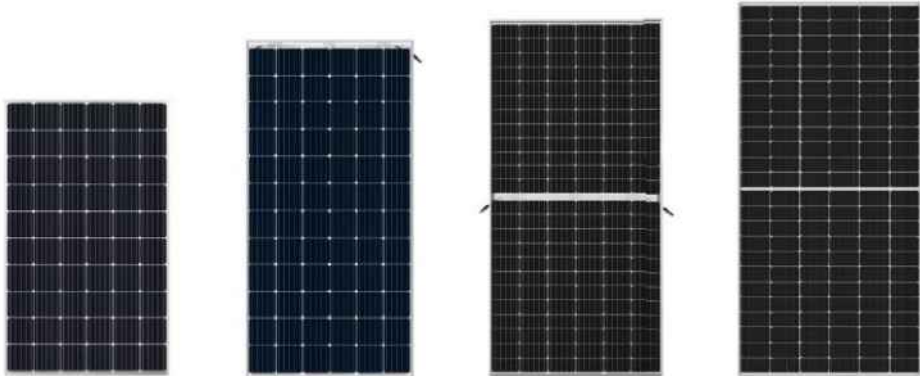
**Wiring Modules**



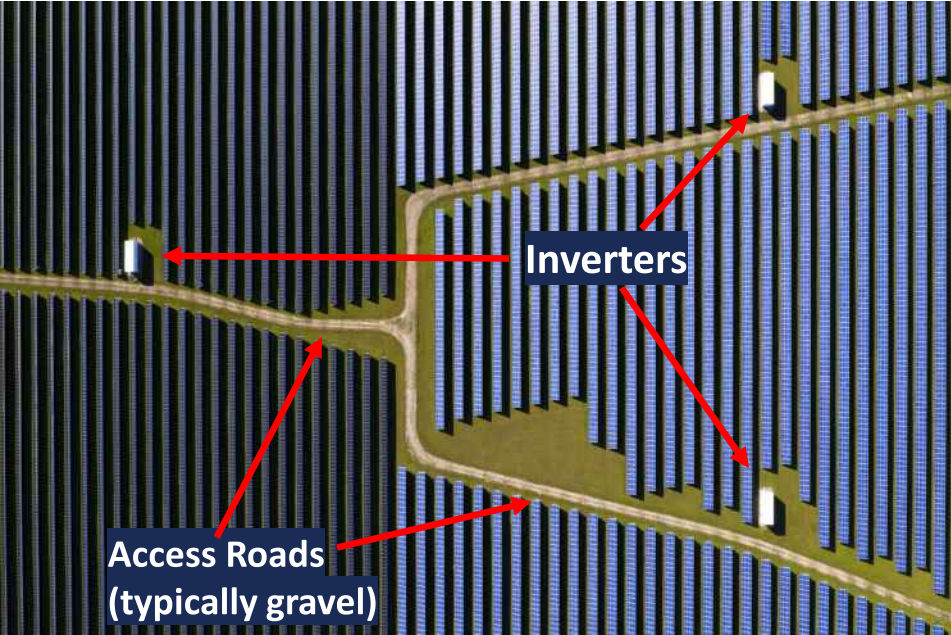
**Installing Collection System**



# CONSTRUCTION – MODULES



# CONSTRUCTION – INVERTERS



**Inverter enclosure & medium voltage transformer**



# CONSTRUCTION – ELECTRICAL SUBSTATION



**Control House**

**Main Power Transformer**



# OPERATIONS, MAINTENANCE & DECOMMISSIONING



- Typically, 2-3 full time O&M employees on site during normal working hours; remote monitoring at night and during off hours
- Landscaping and vegetative screening will be maintained by operator to ensure proper mitigation and growth
- Components are disposed and/or recycled at the end of the project's useful life, per federal and local requirements
- The site will be restored to its previous condition at the end of the facility's life
- Decommissioning and restoration bond will be posted prior to construction





**Thank You!**





**Monetary Donations**  
can be made at  
Limestone Bank or  
mailed to PO Box 688,  
Munfordville, KY

**Hart County, KY Tornado Relief**

**DISASTER RELIEF**

**Suggested Items to Donate (new items only):**  
toiletries, towels, blankets, pillows, clothes, household items (such as  
pots/pans, utensils, etc.), non-perishable food, gift cards

Donated Items can be dropped off at the Hart County Sheriff's Office beginning  
Tuesday, December 14 between 9 am and 3 pm.  
Items will be accepted through Friday, December 17.

No large items will be accepted at this drop-off location.

---


**QUESTIONS? Call the Chamber of Commerce**  
at 270-524-2892


[www.hartcountyky.com](http://www.hartcountyky.com)





HART COUNTY, KY



  
**50**  
 MEGAWATT (MW)  
 SOLAR CAPACITY

  
**105,000**  
 ANNUAL MEGAWATT  
 HOURS GENERATED

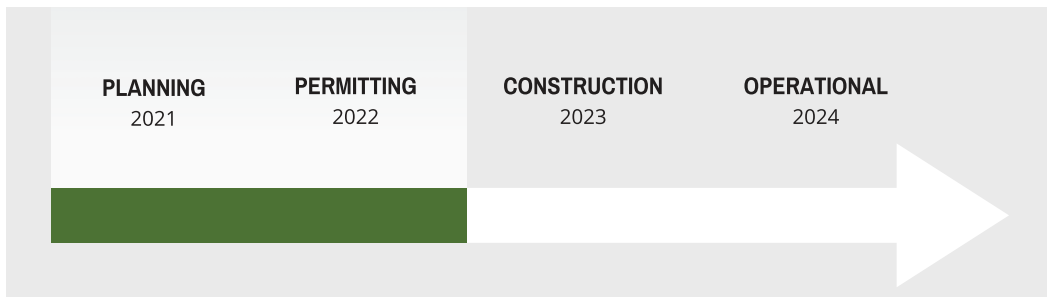
  
**140**  
 JOBS CREATED  
 DURING CONSTRUCTION

  
**2024**  
 TARGETED  
 OPERATIONAL

Thoroughbred Solar, LLC (“Thoroughbred Solar”) is working on the development of a 50-megawatt (MW) solar facility located on approximately 450 acres of farmland near the town of Rowletts in Hart County, Kentucky. The project will connect to the existing 69kV Eastern Kentucky Power Cooperative transmission line.

Thoroughbred Solar is expected to operate for 30+ years, providing significant economic investment to the community, a substantial property tax base for Hart County’s local government, infrastructure and schools, and generate emission-free renewable energy.

As Thoroughbred Solar completes development, construction is scheduled to start in 2023, bringing an influx of new jobs to the community. The project is expected to begin operating in late 2024 or early 2025.



**ABOUT**

Thoroughbred Solar, LLC is a wholly owned subsidiary of Leeward Renewable Energy, LLC, a leading renewable energy producer dedicated to sustainably powering the future. Leeward currently owns and operates 22 renewable energy facilities across nine states, totaling more than 2,000 MW of installed capacity. Leeward is a portfolio company of OMERS infrastructure, a preeminent global infrastructure investment arm of OMERS, one of Canada’s largest defined benefit pension plans with over C\$121 billion in net assets (as at December 31, 2021).



## BENEFITS TO THE COMMUNITY

Solar energy facilities are a beneficial, temporary, and low impact use of land. Benefits of solar projects include:

- Significant property tax contributions will add low-impact, assessed value to the region.
- Operational facilities are a passive use of the land, generating minimal traffic, dust, odors or other nuisances.
- Approximately 300 new full-time equivalent jobs will be created during the construction phase of the project.
- The facility will not generate significant emissions or consume water during operation.
- Solar facilities provide economic diversification to participating landowners and communities. Two families that have partnered with Thoroughbred Solar will continue to raise cattle on their family farms adjacent to the project.
- At the end of operations, equipment will be removed, and the land will be made ready to return to its prior use. A bond will be posted at the start of construction to ensure funds are available for decommissioning.

## PUBLIC ENGAGEMENT

Thoroughbred Solar is committed to earning the trust of our neighbors. Our engagement with the community goes beyond job creation, economic investment and providing renewable energy. From the development phase to project operation, we strive to building lasting relationships civic leaders, landowners, local organizations, and community members. We value being transparent in our communication and responsive to public feedback. With a long history of supporting local organizations, we believe in getting to know our neighbors and supporting causes with deep community involvement. Whether through employee volunteer opportunities or corporate-level sponsorships, we look for positive ways to stay actively engaged and demonstrate our value of community stewardship.



## CONTACT

Rob Kalbous | Development  
rob.kalbous@leewardenergy.com  
512-902-8837

Erica Zolezzi | Public Affairs  
erica.zolezzi@leewardenergy.com  
808-276-5269



# Thoroughbred Solar

@ThoroughbredSolar · Energy Company

[Learn more](#)  
thoroughbredsolar.com

Home About Photos Videos More ▾  
Liked Message Search

## About

- 1 Thoroughbred Solar is poised to harness the sun in Hart County! This proposed 50 megawatt project would boost the community's tax base, diversify the income of local farmers and landowners, and deliver renewable energy to Kentucky. [See less](#)
  - 1 Thoroughbred Solar is expected to operate for 30+ years, providing significant economic investment to the community, a substantial new property tax base for public services and schools, while generating renewable energy. On top of this, we also strive to build a lasting relationship with the community. We get to know our neighbors and love supporting the local causes they are passionate about. Whether through employee volunteer opportunities or corporate-level sponsorships, we are always looking for ways to support Hart County. For more information, please visit us at [thoroughbredsolar.com](http://thoroughbredsolar.com)
- FACEBOOK PAGE CODE OF CONDUCT**  
This page is designed to be a source of information and civil discussion. To maintain this environment, we expect that users will refrain from posting content that is in

Create post

Photo/video Check in Tag friends

Thoroughbred Solar 7h · 🌐

Today is a day to celebrate the red, white, and blue. Fly your stars and stripes high this Flag Day!

# CLASSIFIEDS

TO PLACE A CLASSIFIED AD CALL 270-786-2676

## GUN SHOW

**GUNS, KNIVES, AMMO.** Buy, Sell, Trade or Look. Cave City Convention Center. Saturday, March 26, 9 to 5; Sunday, March 27, 9 to 4.

## WANTED TO BUY

**Miller's Cedar Mill**  
**BUYING LOGS**  
Call for pricing  
Horse Cave  
270.786.4316

## STORAGE

**HART MINI STORAGE:** New, secure, fenced, lights inside units, Munfordville. Call 270-524-3690 or 270-524-4475. RV & Boat storage available.

## WOOD FURNACES

**CENTRAL BOILER OUTDOOR WOOD FURNACES**  
Parts, accessories, insulated underground pipe and radiant floor heat supplies in stock  
**SOUTHERN KY WOOD FURNACES**  
270-459-1840

## LAWN SERVICE

**CHAD'S LAWN CARE & BUSH HOGGING.** For all your mowing, bush hogging, food plots, pasture and hay fields seed drilling. Also fertilizing and hardwood installation. Adam Miller. Call (270)528-6213.

## WOODWORKING & FLOORS

**MILLER'S WOODWORKING AND CUSTOM FLOORS:** Vinyl, laminate and hardwood installation. Adam Miller. 270-218-1456.

## LOGGING SERVICES

**STANDING TIMBER:** Nolin River Logging, Certified Kentucky Master Logger. In business since 1983. 270-528-1537.

## FOR RENT

**FOR RENT: 2 bedroom duplexes; 3 bedroom homes.** Lease required. No pets. Rent \$600 and up. Call for information and availability. 270-524-3690.

# Yellow lenses to rescue for macular degeneration



**DEAR DR. ROACH:** I have an elderly friend who's becoming blind from macular degeneration. After hearing of a particularly frustrating event she experienced due to vision loss, I remembered the great clarity that the yellow-lens (to reduce glare) glasses gave me, not just at night, but daytime also.

So, I sent her a pair to see if it would help, as a last-ditch effort. She called me crying, it had made such a difference! She has now had her prescription eyeglasses done with the yellow (blue-canceling?) lenses. Of course, we understand that this is just a temporary help, and won't prevent the blindness from taking its course, but it has given her much better vision for a time. -- I.L.B.

**ANSWER:** Age-related macular degeneration is the leading cause of vision loss in industrialized countries. It is a degeneration of the central part of the retina, called the macula, which is responsible for fine de-

tail central vision. The underlying cause is not precisely known, and the course is progressive.

I was able to find a 2002 study that confirmed that yellow or orange lenses improved contrast sensitivity in people with early age-related macular degeneration, whereas red and gray lenses worsened it. Another study suggested that the perceived benefit (the subjective experience by the person) was enhanced, but that objective improvement in vision was not actually improved much at all.

In my opinion, perceived benefit is still worth a great deal, and since there is little effective treatment for the more common "dry" form of ARMD beyond vitamins and smoking cessation, I am publishing your letter in hopes that some people will get improvements in their vision, as your friend did, from this low-cost treatment with essentially no risk of side effects.

\*\*\*  
**DEAR DR. ROACH:** I am a healthy 73-year-old man who has always had a large prostate. Thirty years ago, my urologist described it more like the size of an orange rather than a walnut. Despite its size, it has never given me any problems -- no UTIs, sudden urination, poor stream, waking me in the middle of the night, etc. Despite not having symptoms, about 10 years ago I was prescribed finasteride at a dose of 5 milligrams, and Rapaflo "try to keep it in check." In 2018 I had an ultrasound done of my prostate, and it was measured at 185 grams. It was measured again recently and is now 232 grams. My PSA is always in the 3.2-3.5 range.

At what point does a prostate get too large? Should I be concerned even without having any symptoms? To his credit, my urologist discussed my surgical options, along with the related side effects. I am reluctant to do anything if it's not necessary. -- J.J.

**ANSWER:** The normal prostate gland is about 20 grams, and only 4% of men will develop a prostate over 100 grams. Yours is well past that, though far short of the world record of 2,410 grams.

It is striking that the size of the prostate does not well correlate with a man's symptoms. Since you have no symptoms and a low PSA level (especially considering the size), there is no indication to do anything surgically. The risk of surgical complications is higher in men with very enlarged prostate glands, so I would certainly be cautious about considering surgery.

## PUBLIC NOTICE

**THOROUGHbred SOLAR PROJECT**  
Thoroughbred Solar, LLC, is proposing to develop and construct an up to 50-megawatt solar electric generating facility on approximately 450 acres comprised of multiple tracts of undeveloped, agricultural land located south of the City of Munfordville, Hart County, Kentucky on the east side of Interstate 65 and west of the town of Rowletts.

The Project website includes information about the size and location of the proposed Project and the anticipated economic impact. Information on an upcoming public meeting is also included. The website can be accessed at [www.thoroughbredsolar.com](http://www.thoroughbredsolar.com). Additionally, you may email questions to [rob.kalbous@leewardenergy.com](mailto:rob.kalbous@leewardenergy.com).

Additionally, a public meeting has been scheduled for April 13, 2022 from 6:00 p.m. to 8:00 p.m. at Hart on Main, 301 Main Street, Munfordville, Kentucky 42765. The meeting format will be similar to an open house and maps of the project area will be available to review. Company representatives will be available to answer questions.

## PUBLIC NOTICE

Bailey Gibson Buick GMC at 306 Happy Valley Rd. intends to obtain title for 2011 Chevrolet Cruze LT VIN #1G1PE559087216796 belonging to Preston Wooten with last known address of 175 Woods Rd., Munfordville, KY 42765 with intent to sell for purpose of recouping storage fees and diagnostic charges.

If owner does not object in writing within 14 days of last publication of this notice, Bailey Gibson Buick GMC will apply for title and sell vehicle pursuant to KRS.186A.190.

## ADVERTISEMENT FOR BIDS

Caveland Environmental Authority and the Hart County Industrial Authority request bids on the following Project:

**HORSE CAVE PRETREATMENT PLANT COMPOST SCREEN WITH DIESEL ENGINE, 150 TONS PER HOUR.**

Sealed bids will be received at the Caveland Environmental Authority Office located at, 508 S. Dixie Highway, Cave City, KY 42127, no later than **8:00 a.m. (Local Time) on April 4-2022.** Plans and specifications for the Project are on file and may be examined at Caveland Environmental Authority.

## PETS

**PUPPIES, DOGS, KITTENS AND CATS:** Glasgow/Barren County Animal Center. 175 Trojan Trail, or call 270-651-PAWS (7297).

## CHIROPRACTOR

Having . . .

- ✓ Headaches?
- ✓ Low back pain?
- ✓ Pain from an AUTO ACCIDENT?

**Call us Today!**

**PILLARS FAMILY CHIROPRACTIC**  
**270-524-5240**

# BUSINESS & SERVICES DIRECTORY

<h3>GARAGE DOORS</h3> <p><b>GARAGE DOORS</b> by Farmwald Construction • New Construction • Replacement Doors SAFEGUARD DOORS HAAS DOORS LINEAR OPENERS 808 FARMWALD 270-570-4456 270-524-2428</p>	<h3>GUTTERING</h3> <p><b>YODER'S SEAMLESS 5" &amp; 6" GUTTERS</b> 50 COLORS CUSTOM VINYL SIDING LEAF GUARD AVAILABLE WITH 10 YEAR WARRANTY Mervin Yoder (270) 925-9437</p>	<h3>ELECTRIC</h3> <p><b>A&amp;B Electric</b> Commercial &amp; Residential <b>DONNIE ALLEN</b> 270-404-0202 Licensed &amp; Insured</p>	<h3>DRILLING</h3> <p><b>LOGSDON DRILLING CONTRACTING</b> • Water Well • Oil &amp; Gas <b>SERVICE</b> 270-242-6186 • Pump Sales • Service • Installation</p>	<h3>PLUMBING</h3> <p><b>WILSON PLUMBING &amp; REPAIRS</b> We Do: • Residential • Commercial • New Construction &amp; Repairs • Gas Lines • Equipment Hook Ups • Drains <b>CRAIG WILSON</b> 492 Charlie Dowling Rd. Munfordville, KY 42785 <b>270-524-4217</b> Master Plumber License # 6116</p>	<h3>CONSTRUCTION</h3> <p><b>G.L. BAILEY &amp; SONS</b> GENERAL CONTRACTORS Building, Remodeling and Roofing LICENSED &amp; INSURED 442 Rubie Smith Road Carmet, KY 42722 <b>JONATHAN BAILEY</b> (270) 539-2686 Cell 270-537-1897</p>	<h3>ELECTRIC</h3> <p><b>TWEEDY &amp; SON ELECTRIC, LLC</b> CE 64183 ME 64043 ME 65590 <b>WILLIAM &amp; EVERETT TWEEDY OWNERS</b> 270-528-6051 OR 270-218-0395 Call Licensed &amp; Insured</p>	<h3>WINDOWS</h3> <p><b>Ridgetop Windows</b> Replacement &amp; Stock Vinyl Windows &amp; Doors Call <b>270-786-3078</b></p>
---	--	---	---	---	--	---	--

### LOGGING

**WANTED: STANDING TIMBER**  
*Money Grows On Trees*

• Certified Logger  
• References Available  
• Licensed and Insured  
Experience Makes The Difference  
**ELI MILLER LOGGING**  
**270-524-2967**  
Please leave message

### FIREWOOD

**HORSE CAVE HARDWOOD**  
*Now Open!*  
\* Buying \*  
**Firewood Grade Timber**  
"Processors, Packagers and Sellers of Kiln-Dried Firewood"  
320 Cherry Street, Horse Cave  
Call Dan at  
**270-401-6653**

### LOGGING

**ATTENTION LOGGERS: WE NEED YOUR LOW GRADE LOGS!**

We are a large consumer of low grade logs in Central Kentucky.  
Cub Run Hardwoods in Cub Run, KY and Eagle Lumber in Greensburg, KY  
**WE BUY YEAR ROUND!**  
Tie Logs (Mixed Hwd) Pallet Grade  
(Oak) Tie Logs  
**Call for current pricing!**  
(Subject to demand. We can arrange to pick up your load. Call for prices.)  
**CUB RUN HARDWOODS** Wilmer Yoder - 270-524-7811  
**EAGLE LUMBER** Rodney Zimmerman - 270-485-7472

### METAL ROOFING

**Metal Roofing**  
*Free Estimates*  
**270-590-0250**  
**HAGAN'S CONSTRUCTION**  
ROOFING \* SIDING \* WINDOWS

AFFIDAVIT

This is to certify that the 24 day of March,  
2022 an ad for Thoroughbred Solar Project,  
LLC

was published in the regular edition of the Hart County  
News Herald, a newspaper published for general  
circulation in the City of Munfordsville, Hart  
County and adjoining counties.

Pam Wright

COMMONWEALTH OF KENTUCKY

County of Hart

The foregoing was subscribed and sworn to before me by \_\_\_\_\_  
Pam Wright on this 24 day of March  
in 2022.

Leslie London

Notary Public, Kentucky, State-At-Large

My commission expires: 02-09-23



Bricker & Eckler LLP  
100 South Third Street  
Columbus, OH 43215  
Office: 614.227.2300  
Fax: 614.227.2390

Sommer L. Sheely  
Direct Dial: 614.227.8870  
ssheely@bricker.com  
www.bricker.com  
info@bricker.com

March 28, 2022

Dear ) Property Owners of Land Leased for the Project:  
) Property Owners of Land Next to Land Leased for the Project:

As the attorneys representing Thoroughbred Solar, LLC (“Thoroughbred Solar”) before the Kentucky Electric Generation and Transmission Siting Board (“Board”), we are writing to inform you that Thoroughbred Solar is seeking to develop and construct an up to 50-megawatt solar electric generating facility on approximately 450 acres comprised of multiple tracts of undeveloped, agricultural land located south of the City of Munfordville, Hart County, on the east side of Interstate 65 and west of the town of Rowletts. Thoroughbred Solar will be formally submitting an application to the Board for review and approval to begin construction in 2023.

Leeward Renewable Energy Development, LLC (“Leeward Renewable”), the owner of Thoroughbred Solar, is one of the largest, most technologically advanced utility-scale solar and energy storage project development companies in the U.S. Leeward Renewable has been developing over 17,000 megawatts of utility-scale photovoltaic (PV) and energy storage projects in more than twenty states. Leeward Renewable upholds the highest standard of safety and competency required for long-term and day-to-day operations.

Thoroughbred Solar has set up a project website to provide additional information and help keep you informed of project updates. You can visit it at [www.thoroughbredsolar.com](http://www.thoroughbredsolar.com).

Additionally, a public meeting has been scheduled for April 13, 2022 from 6:00 p.m. to 8:00 p.m. at Hart on Main, 301 Main Street, Munfordville Kentucky 42765. The meeting format will be similar to an open house, and maps of the project area will be available to review. Company representatives will be available to answer questions.

If you have any questions, you may contact Rob Kalbouss at [rob.kalbouss@leewardenergy.com](mailto:rob.kalbouss@leewardenergy.com) or (512) 902-8837.

Sincerely on behalf of  
Thoroughbred Solar, LLC,

Sommer L. Sheely  
Dylan F. Borchers



**THOROUGHBRED SOLAR, LLC**

**LIST OF LANDOWNER ADDRESSES RECEIVING NOTICE OF  
THE PUBLIC INFORMATION MEETING**

LINDA B SLOAN  
420 GARY WILSON LN  
HORSE CAVE, KY 42749

MICHAEL C & PAMELA DENNIS  
584 LEGRANDE HWY  
HORSE CAVE, KY 42749

AJ RE VENTURE LLC  
13801 WASHINGTON RD  
LARGO, KY 33774

ANITA RICHARDSON  
2832 S DIXIE HWY  
ROWLETTS, KY 42765

ARLIE HORTON  
335 L & N TURNPIKE  
MUNFORDVILLE, KY 42765

CARRIE ROWLETT  
620 ROWLETTS CAVE SPGS RD  
HORSE CAVE, KY 42749

CHARLES & BEVERLY GAIL STOUT  
221 BUNNELL CROSSING RD  
MUNFORDVILLE, KY 42765

CHRISTOPHER M & LORI MEREDITH  
651 MAPLE GROVE LANE  
MUNFORDVILLE, KY 42765

CONSTANCE J & DOROTHY J  
WAGGONER  
353 L&N TURNPIKE RD  
HORSE CAVE, KY 42749

DAVID A & TRACI A GARDNER  
1129 L & N TURNPIKE ROAD  
HORSE CAVE, KY 42749

DAVID D & BONNIE A SAMMONS  
982 ROWLETTS CAVE SPGS RD  
HORSE CAVE, KY 42749

DAVID D & BONNIE A SAMMONS  
983 ROWLETTS CAVE SPGS RD  
HORSE CAVE, KY 42749

DAVID D & BONNIE A SAMMONS  
984 ROWLETTS CAVE SPGS RD  
HORSE CAVE, KY 42749

DAVID SPENCER  
5160 HWY 44 EAST  
SHEPHERDSVILLE, KY 40165

ENGLAND MIKE LIVING TRUST  
1631 HARDYVILLE RD  
MUNFORDVILLE, KY 42765

FANNIE WILSON  
650 GARY WILSON LN  
HORSE CAVE, KY 42749

ISAACS FAMILY LLP  
PO BOX 610  
MUNFORDVILLE, KY 42765

JAMES LEE & BEVERLY A BERGER  
455 L & N TURNPIKE RD  
HORSE CAVE, KY 42749

JESSE & DOROTHY HARDESTY  
670 ROWLETTS CAVE SPGS RD  
HORSE CAVE, KY 42749

JOHNATHAN & ROWLAND C  
& AELENA S THOMPSON  
131 MAPLE GROVE LN  
HORSE CAVE, KY 42749

JOSHUA RANDALL PRATHER  
884 ROWLETTS CAVE SPRING RD  
HORSE CAVE, KY 42749

JUDY SALCHI  
7108 BLAZIER CT  
LOUISVILLE, KY 40228

**THOROUGHBRED SOLAR, LLC**

**LIST OF LANDOWNER ADDRESSES RECEIVING NOTICE OF  
THE PUBLIC INFORMATION MEETING**

LOGSDON FAMILY CEMETERY  
c/o HERSHELL LOGSDON  
1298 L&N TURNPIKE RD  
HORSE CAVE, KY 42749

LYNN DOUGLAS & KIMBERLY  
ENGLAND  
1670 L&N TURNPIKE RD  
HORSE CAVE, KY 42749

MARA KATHLEEN PURGIEL  
366 MAPLE GROVE LN  
MUNFORDVILLE, KY 42765

MARTY D & SARA A MILLER  
299 MEADOW RIDGE LANE  
HORSE CAVE, KY 42749

MCFELIA CLARA DEAN REVOCABLE  
TRUST  
1934 S DIXIE HWY  
MUNFORDVILLE, KY 42765

MUNFORDVILLE CONG OF JEHOVAHS  
WITNESSES  
c/o JEFF MOSHER  
177 J C HARLOW RD  
HARDYVILLE, KY 42746

PAMELA GREEN  
240 L&N TURNPIKE RD  
HORSE CAVE, KY 42749

PATRICIA MARKWELL & DANA HOYT  
3344 NUGGETT DR  
BOWLING GREEN, KY 42104

RONNIE & PAM LANE  
370 MAPLE GROVE LN  
ROWLETTS, KY 42765

ROWLETTS BAPTIST CHURCH  
191 CHURCH ST  
ROWLETTS, KY 42765

ROWLETTS BAPTIST CHURCH  
c/o AJ WILSON  
10772 N JACKSON HWY  
MAGNOLIA, KY 42757

RUBY & CHRISTOPHER MEREDITH  
651 MAPLE GROVE LN  
ROWLETTS, KY 42765

TAMMY HUMPHREY  
160 HOWARD SCOTT RD  
MUNFORDVILLE, KY 42765

WALTER DEVINE  
250 MAPLE GROVE LN  
ROWLETTS, KY 42765

WALTER DEVINE  
251 MAPLE GROVE LN  
ROWLETTS, KY 42765

WARREN & TOREKA PULOU  
JOHNSON  
695 L & N TURNPIKE RD  
HORSE CAVE, KY 42749

WILLIAM & ROSANNA BYLER  
1822 ROWLETTS CAVE SPRINGS RD  
HORSE CAVE, KY 42749

WILLIAM & ROSANNAR BYLER  
1823 ROWLETTS CAVE SPRINGS RD  
HORSE CAVE, KY 42749

WILLIAM MICK & JERRY LAWLER  
PO BOX 42  
MUNFORDVILLE, KY 42765

WOODSONVILLE CEMETERY  
ROWLETTS, KY 42772

ZACHARY I COTTRELL  
1262 L & N TURNPIKE  
HORSE CAVE, KY 42749

**YOU'RE INVITED!**

**THOROUGHbred SOLAR**  
**OPEN HOUSE**

HART COUNTY, KY

**DATE**  
April 13, 2022

**WHEN**  
6 p.m. - 8 p.m.

**PLACE**  
Hart on Main  
301 Main St  
Munfordville, KY 42765



thoroughbred solar

**FOR MORE INFORMATION**

ThoroughbredSolar.com  
Info@ThoroughbredSolar.com

Thoroughbred Solar, LLC | 6688 N. Central Expy., | Suite 500 | Dallas, TX 75206



Hart County has an opportunity to harness the sunshine! Thoroughbred Solar, LLC, is proposing the development of a 50-megawatt (MW) solar facility in the area - creating renewable energy, local jobs, and more. The Thoroughbred Solar team is committed to working alongside the community as we move through the permitting process. As part of our commitment, we are hosting an open house to introduce the project, answer questions, and gather feedback from residents.

There will not be a formal presentation during the Open House, so please stop by any time to get information and meet project representatives.

We look forward to meeting you.



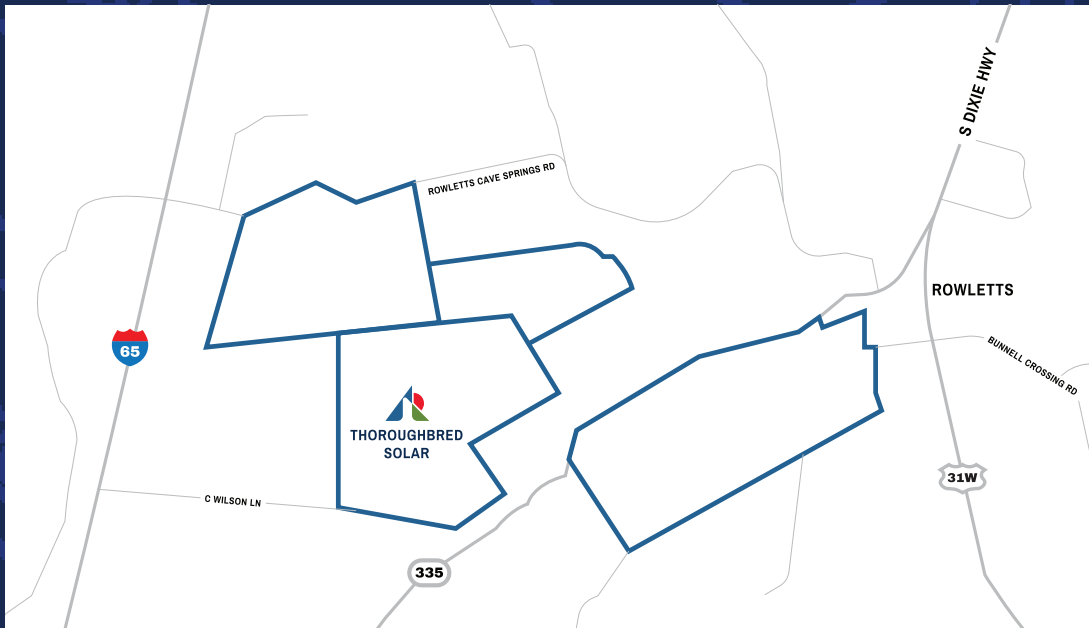
# WELCOME



HART COUNTY, KY

## COMMUNITY MEETING

6-8 PM  
Wednesday,  
April 13, 2022



# PROJECT FACTS

## OVERVIEW:

- Up to 50 megawatt (MW) alternating current (AC) solar project in the early stages of development. Electricity generated by the solar facility will be supplied to the PJM transmission system.

## LOCATION:

- Approximately 450 acres west of the town of Rowletts in Hart County, Kentucky.

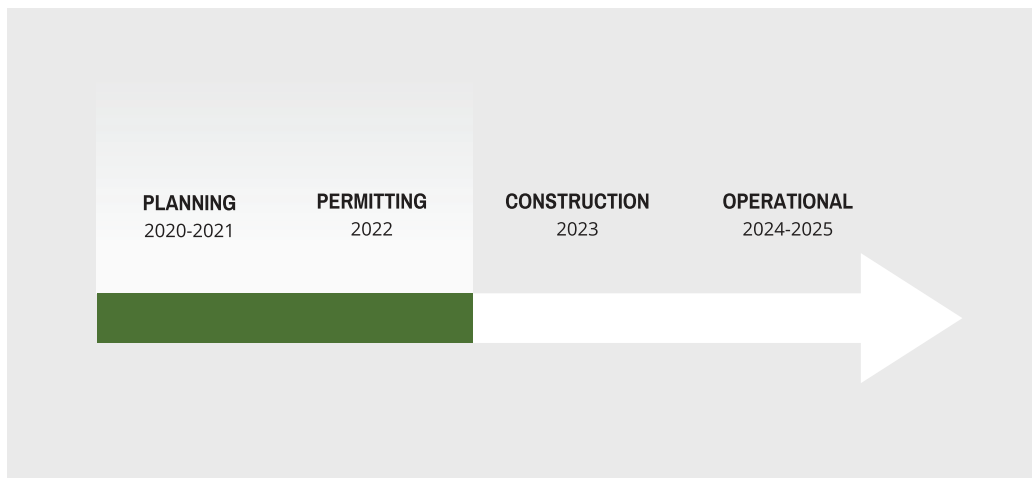
## PERMITTING:

- Thoroughbred Solar will submit a permit application to the Kentucky State Electric Generation and Transmission Siting Board.
- A Siting Board permit is required prior to a company constructing and operating a solar project in the state.
- As part of the Siting Board permit review process, numerous studies and plans are required.
- Thoroughbred Solar will apply for permit approval through the Siting Board in Summer 2022.

## DESIGN:

- Solar panels mounted on single axis trackers.
- Peak height of 15-feet, at maximum tilt.
- Driven steel post foundations.
- 7-foot-tall game fencing with 8-foot wooden posts.
- Nearest residence is over 200 feet.
- Visual screening with professional landscaping.
- Native grasses and pollinators planted on site after construction.

# PROJECT SCHEDULE



# WHO WE ARE

## Leeward Renewable Energy



- Leading developer, owner and operator of renewable energy projects.
- 22 renewable energy facilities across nine states.
- 2,000+ Megawatts (MW) of renewable energy capacity.
- 20 Gigawatts (GW) under development, spanning over 100 projects.
- Headquartered in Dallas, TX with regional offices across the U.S.
- Portfolio company of OMERS Infrastructure, one of Canada's largest pension plans.

# FREQUENTLY ASKED QUESTIONS

## PROJECT SITE SELECTION

- Access to electrical transmission and PJM electricity market
- Strong regional demand for new, low-cost solar power
- Willing landowners
- Minimal topographic constraints, environmental and cultural impacts

## PROPERTY VALUES

- Solar is a low-intensity, passive use compared to many other “by-right” uses
- Project will not generate substantive noise, traffic, or dust once operational
- Well-developed solar projects will not have a negative impact on property values

## PROJECT DECOMMISSIONING

- Decommissioning bond will be posted prior to construction
- 30+ years of native ground cover will rejuvenate soils while the solar project operates

## NOISE & VISIBILITY

- Negligible noise or glare beyond the project boundary
- Panels are designed to absorb light to generate electricity
- Existing terrain and vegetation, enhanced by setbacks, agricultural-style fencing and professional landscaping will mitigate visual impacts

## COMPATIBILITY WITH AGRICULTURE

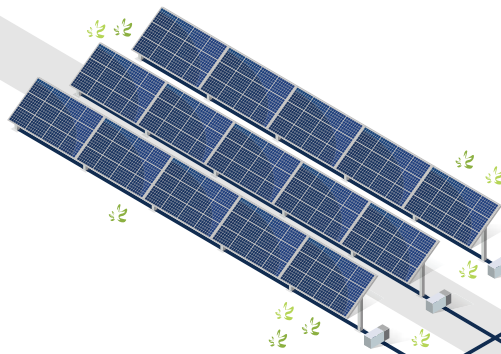
- Two project landowners will continue to raise cattle on their adjacent property
- Project landowners receive income diversification and this supports continued agricultural land use in the community
- Design features like vegetative screening will help the facility blend with the surrounding area



# HOW SOLAR ENERGY WORKS



**1** SOLAR PANELS



**2** INVERTER STATION



**3**

**MV COLLECTION LINES**

The collection lines carry the electric energy underground from the solar panels to the collector substation

**4**

**COLLECTOR SUBSTATION**

The substation transforms the energy received into a high voltage that can be sent long distances

**5**

**TRANSMISSION LINES**

The transmission lines carry the solar-generated high voltage electricity to the grid where it can be distributed by the electric company to businesses, homes, farms, etc.

**6**

**RESIDENCES, BUSINESSES**



# SOLAR DEVELOPMENT PROJECT LIFE CYCLE REVIEW

## SITE SELECTION

- Proximate access to electrical transmission system
- Electrical injection capability
- Suitable acreage – size, topography, etc.

## ELECTRICAL INTERCONNECTION

- Multi-year study process resulting in an interconnection service agreement and ultimately backfeed of power to the grid



## POWER OFFTAKE

- Long-term Power Purchase Agreements (PPAs) with creditworthy counterparties (e.g. utilities, large industrial users, etc.)
- The PPA guarantees a revenue stream that enables the financing of the project

## PERMITTING

- Certificate for Construction of an electric generating facility from the Kentucky State Siting Board and other discretionary actions
- Grading & building permits

## CONSTRUCTION

- Approximately 9–18-month duration

## OPERATIONS

- 30-40 years

## DECOMMISSIONING

- Restoration to pre-existing condition

# PERMITTING STUDIES & REPORTS

## SITING BOARD APPLICATION REQUIREMENTS FOR STUDIES AND PLANS:

### Required for Application

Effect on Kentucky electricity transmission system

Effect on local and regional economics

Property value impact analysis

Noise assessment

Traffic study and fugitive dust

Compatibility with scenic surroundings

### Planned Thoroughbred Solar Study

Interconnection studies and reports, completed in conjunction with the electrical system operator, will ensure a positive effect from the Project's contribution of renewable energy.

The economic impact of the Project will be documented for both construction and operational phases, considering direct effects, indirect effects, and induced effects.

A detailed study regarding the degree to which property values are maintained in proximity to similar solar energy facilities will be provided.

An analysis to demonstrate minimal sound levels outside of the Project Area boundary.

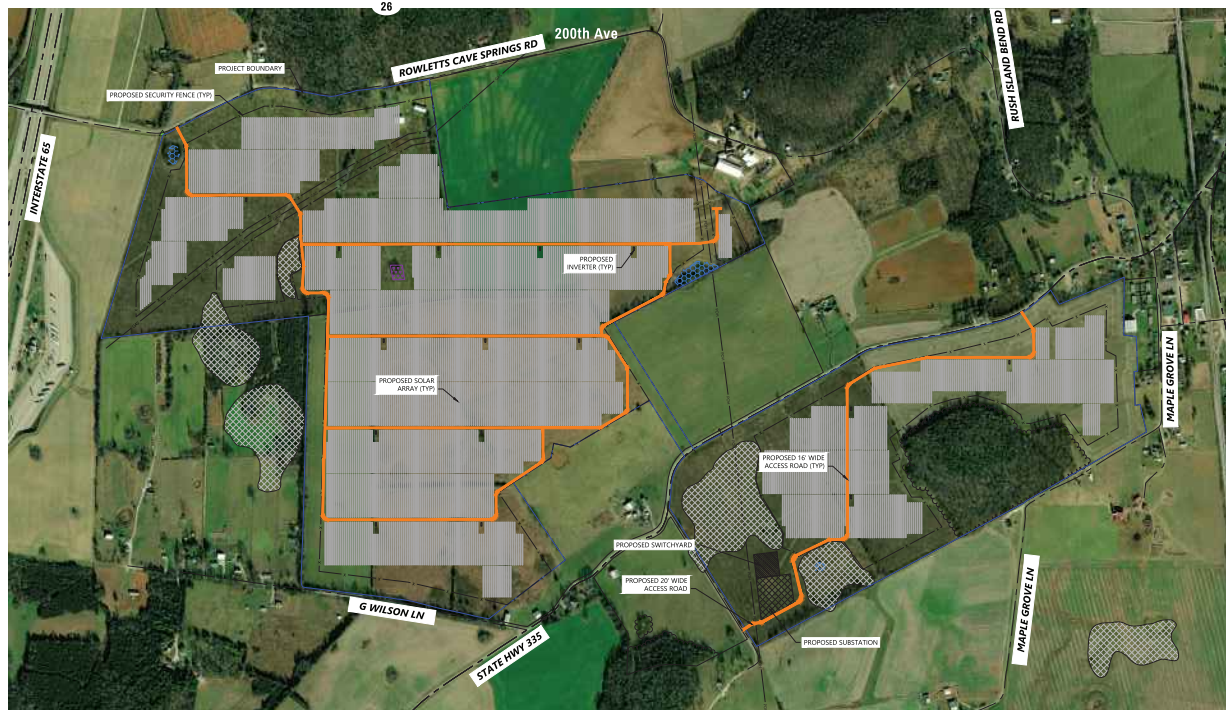
Evaluation of planned construction phase road usage to identify measures to minimize impact on the community, and commitments to control of fugitive dust during construction.

Assessment of representative views to plan for landscape screening.

## Supplementary Analysis by Thoroughbred Solar

- Field identification of **wetlands, streams, and mapped floodplain** to avoid encroachment.
- Retain significant stands of **existing trees**.
- Integrate **protective measures**, as appropriate, to avoid impact to rare, threatened, or endangered species.
- Conduct preliminary **geotechnical analysis** to confirm feasibility and consider appropriate design.
- Provide for **additional landscaping** where appropriate to soften views of the Project.
- Develop a **decommissioning plan** as a roadmap for restoration following end of commercial operations.
- Integrate **pollinator-friendly species** into planting plans.
- Develop a comprehensive **stormwater management** plan to control rainwater and avoid offsite flooding.

# PROJECT SITE BOUNDARY



**LEGEND:**

	PROJECT BOUNDARY
	EX. PARCEL LINE (GIS)
	EX. TREELINE
	EX. OVERHEAD POWER
	EX. GAS PIPELINE
	EX. DELINEATED WETLAND
	EX. CEMETERY
	FEMA FLOOD ZONE
	PROPOSED ACCESS ROAD
	PROPOSED SECURITY FENCE
	PROPOSED ELECTRICAL EQUIPMENT
	PROPOSED SWITCHYARD
	PROPOSED SUBSTATION
	PROPOSED SOLAR ARRAY

**SYSTEM SPECIFICATIONS**

DC System Size (kW)	66,096
AC System Size (MW) @ Inverter	54.0
AC System Size (MW) @ POI	50.0
Module Model	First Solar Series 6 CuRe
Module Rating (W)	400
String Length	8
String Quantity	23,950
13 String Rack Qty	1,355
12 String Rack Qty	398
Module Quantity	132,700
Inverter Rating (kVA)	3000
Inverter Quantity	15
GCB	40%
Pack (M)	16.62
DC/AC Ratio @ Inv	1.22
DC/AC Ratio @ POI	1.32
Racking Type	Single-Axis Tracker
Racking Configuration	1P
Panel Gap Spacing	40"

**Westwood**

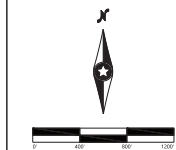
Phone: (802) 967-1730 1211 Whitehall Drive, Suite #100  
 Fax: (802) 967-5822 Montpelier, VT 05602  
 Email: (802) 967-1730 westwood@westwood.com  
 Westwood Professional Services, Inc.

PREPARED FOR:



6688 North Central Expressway, Suite 500  
 Dallas, TX 75206

PROJECT: F-3425 COMMENTS: BY: CHL JAS  
 A: 04/07/2022 Conceptual Site Plan - 1st Review



**Thoroughbred Solar Project**  
 Hart County, Kentucky

Conceptual Site Plan

**NOT FOR CONSTRUCTION**

DATE: 04/07/2022 REV: A  
 SHEET: C300

# LOCAL BENEFITS

- Thoroughbred Solar demonstrates that Hart County is “open for business” and has the infrastructure to attract businesses like advanced manufacturing and data centers that can bring new jobs and new investment to the County.
- Thoroughbred Solar will increase property tax revenue generated by the four land parcels that are being leased which will support additional funding for schools and other local tax entities.
- Thoroughbred Solar will create around 140 jobs during the construction phase of the project. During operations the facility staff and additional economic activity are expected to result in a total of seven full time equivalent jobs.
- Community involvement is a top priority for Thoroughbred Solar. We are committed to giving back and have already been working with the Hart County Chamber of Commerce to support resiliency and relief efforts following the December tornados.



**THANK  
YOU**



[www.thoroughbredsolar.com](http://www.thoroughbredsolar.com)

[info@thoroughbredsolar.com](mailto:info@thoroughbredsolar.com)  
410-861-7727



Pre-Development View:  
Maple Grove Lane





Simulation:  
Maple Grove Lane







Pre-Development View:  
Rowletts Cave Spring  
Road



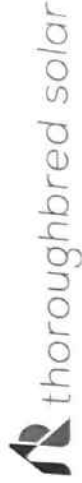


## Simulation: Rowletts Cave Spring Road



# PUBLIC INFORMATION MEETING

Please sign in below:



NAME		PHONE	EMAIL	ZIP CODE	Preferred Method of Contact	
Nike Wilson	270-834-6011			42744	<input type="checkbox"/> Phone	<input type="checkbox"/> Email
<i>(noise, screening)</i> Rachael Spencer	270-404-2130			42749	<input type="checkbox"/> Phone	<input type="checkbox"/> Email
Linda Stoner	270-537-1904			42749	<input type="checkbox"/> Phone	<input type="checkbox"/> Email
Lisa Wilson	270-528-4192			42765	<input checked="" type="checkbox"/> Phone	<input type="checkbox"/> Email
David & Bonnie	270-524-2637				<input type="checkbox"/> Phone	<input type="checkbox"/> Email
Chris Mercedes	270 537 -4084			42765	<input type="checkbox"/> Phone	<input type="checkbox"/> Email
Tony & Traci Gardner	270-218-0486			42749	<input type="checkbox"/> Phone	<input type="checkbox"/> Email
Bruce & Traci	270-774-1828			42765	<input checked="" type="checkbox"/> Phone	<input type="checkbox"/> Email
Michael Boygdon	270-528-7969			42765	<input type="checkbox"/> Phone	<input type="checkbox"/> Email
					<input type="checkbox"/> Phone	<input type="checkbox"/> Email



**Thoroughbred Solar**  
May 25 at 3:36 PM · 🌐

👉 Thoroughbred Solar is thrilled to be among the businesses to help make Dolly Parton Imagination Library FUN Fest shine by providing a \$2,000 donation to help spread the joy of reading.



**CHAMBER OF COMMERCE**

*The Chamber to Everyone's Business*



**Thank  
you!**

👍❤️ 27

1 Share

Hart County Chamber of Commerce is at The Hart on Main.  
August 4 · Munfordville, KY · 📍

Join us at Hart On Main, August 10! We will have Brew House muffins and scones, coffee, and great conversation! #networking #community #breakfast #coffee #tea



*Join us for our first*

# BEYOND BREAKFAST



August 10, 2022  
10-11 am  
Hart On Main  
301 Main Street, Munfordville



*Rob Kalhous, Development Manager  
for LRE will discuss updates on the  
proposed solar project with  
Thoroughbred Solar.*

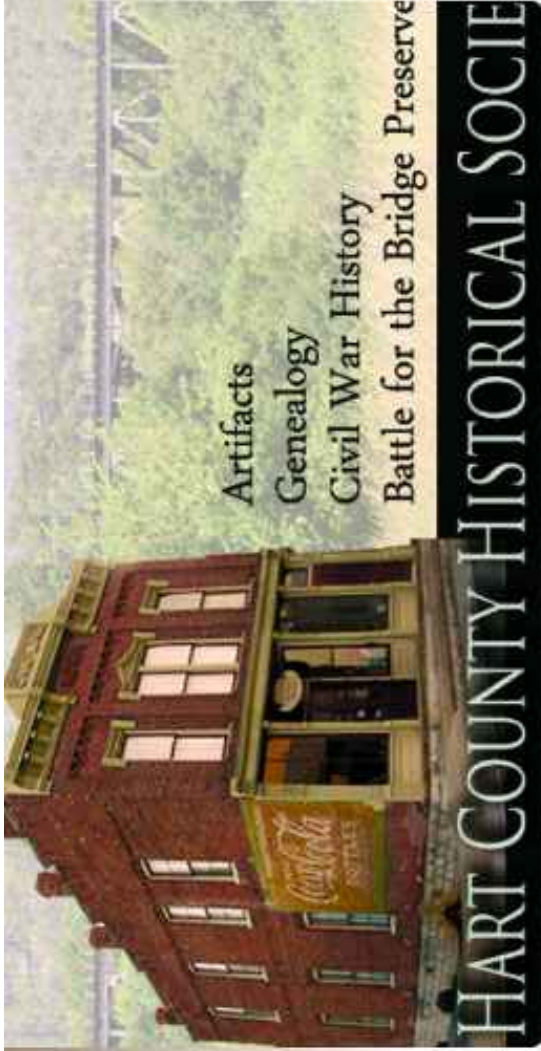
👍 2

🔄 2 Shares

👍 Like

💬 Comment

🔗 Share



1

SATURDAY, OCTOBER 1, 2022 AT 6:30 PM EDT

## Roy A. Cann Award Banquet

Hart County Fairgrounds

About Discussion

- Interested
- Going
- Invite
- ...

### Details

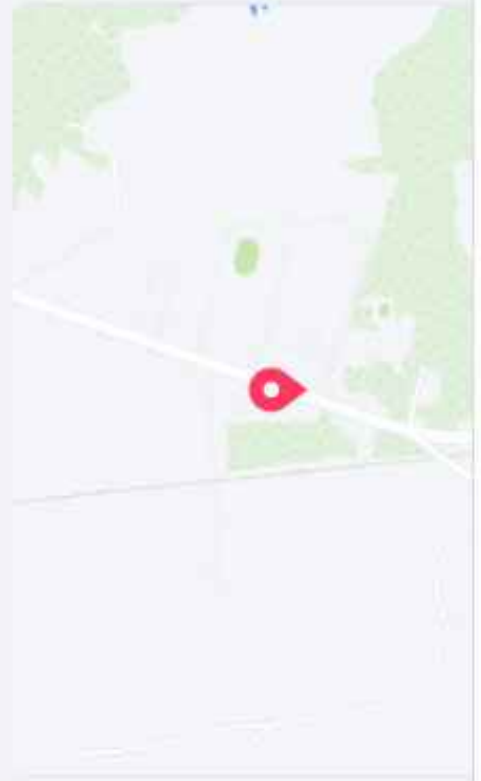
- 10 people responded
- Event by Hart County Historical Museum
- Hart County Fairgrounds
- Tickets [www.hartcountymuseum.org/roy-a-cann-award-2022.html](http://www.hartcountymuseum.org/roy-a-cann-award-2022.html)
- Public · Anyone on or off Facebook

Let's Celebrate Together!  
The First Annual  
Roy A. Cann Award Banquet  
... See more

Foods

### Tickets

Find Tickets



Thank you for attending.

From research and tours at the museum to visiting the Anthony Woodson house and the Battle for the Bridge Preserve, we welcome you to join us.

---

Sincere thanks to our sponsors:

## Event Sponsor



## Table Sponsors

Munfordville Tourism

Limestone Bank

Cecilian Bank

German American Bank

## Sponsors

Ricky Alvey

Phillip Thompson



**Thoroughbred Solar**  
July 15 · 🌐

...

Thank you again to everyone who attended the Hart County Fair! We had a blast sponsoring and spectating the tractor pull. What was your favorite part of the fair?



👍❤️ 104

6 Comments 3 Shares