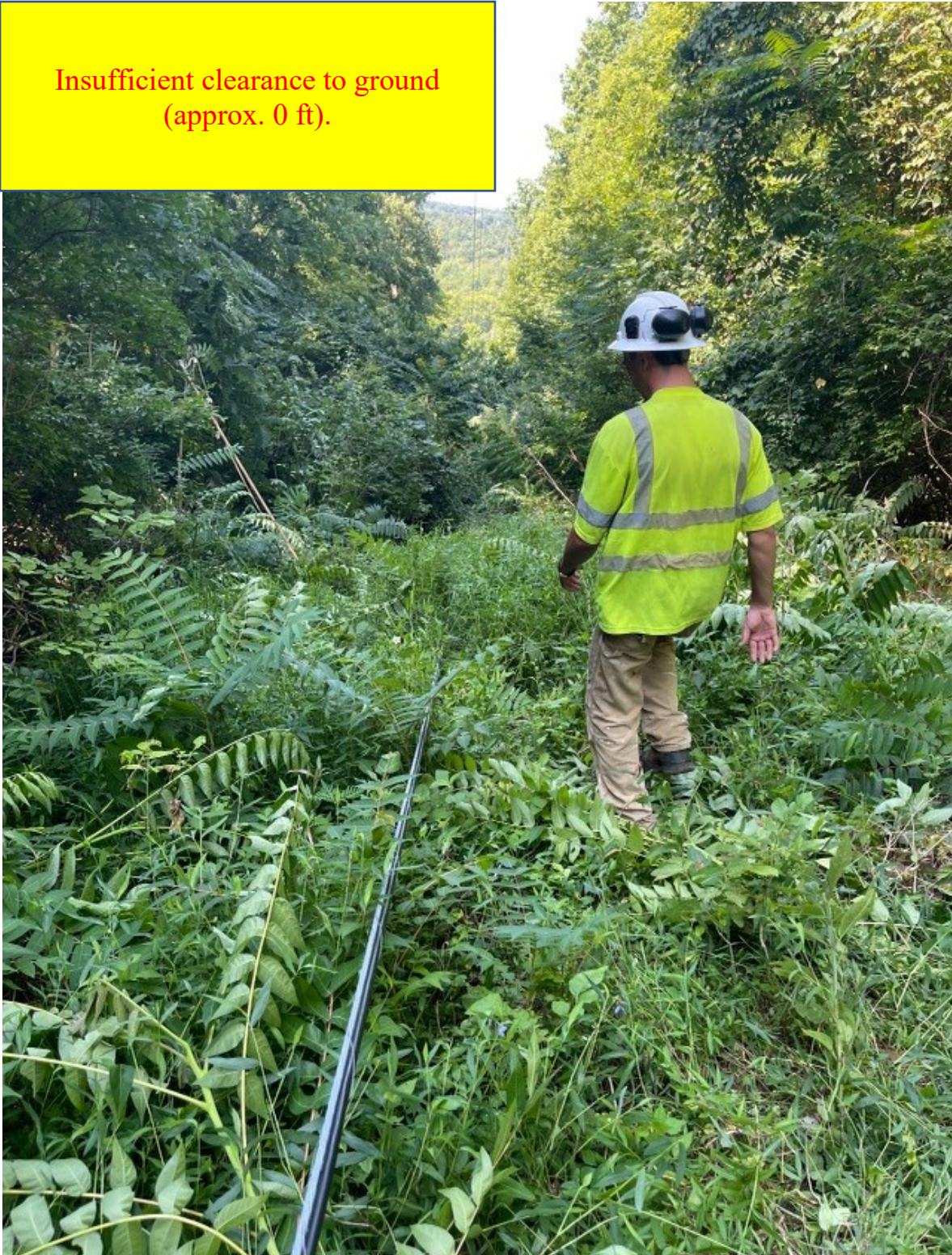


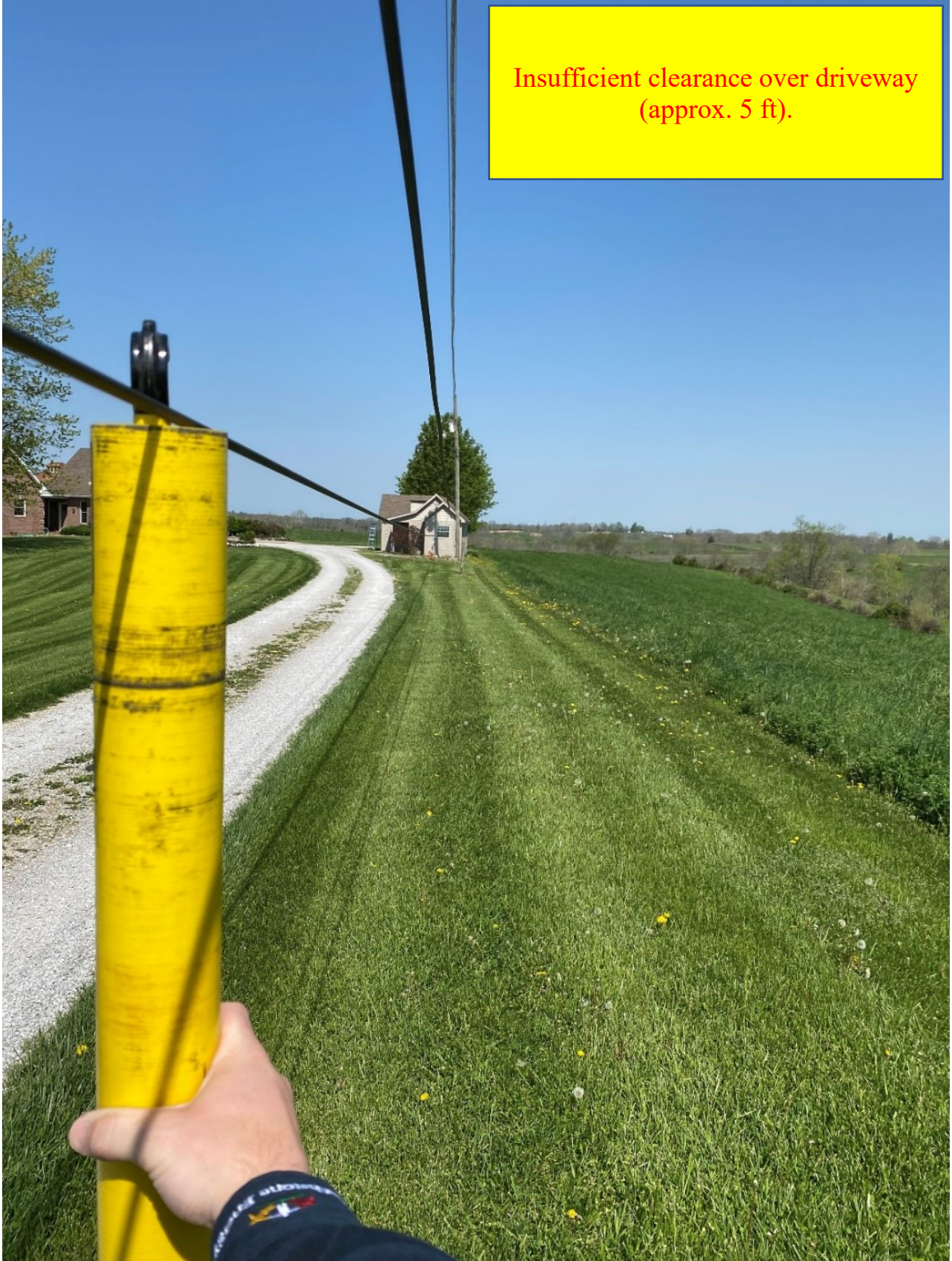
Tethering communications messenger
to power neutral while installing.



Insufficient clearance to ground
(approx. 0 ft).



Insufficient clearance over driveway
(approx. 5 ft).



Insufficiently guyed leaning pole.
Improperly communications cable.





Communications facilities attached with a rope.




Cable been on ground for months

Cable damage



Wire on ground



A photograph of a cornfield under a clear blue sky. Several power lines run across the top of the frame. A red arrow points from a yellow text box to a cable that has become unlashed and is hanging low over the corn plants. The corn plants are tall and green, reaching up to the cable. In the background, there are trees and a utility pole.

Cable unlashed,
hanging low over 4' tall
corn.



Cables located in the supply space.



Insufficient guying on cables leaving the powerline route causing pole to lean.

No guy wire for this tap, causing the pole to lean toward the road.

