

COMMONWEALTH OF KENTUCKY
BEFORE THE KENTUCKY STATE BOARD ON ELECTRIC GENERATION
AND TRANSMISSION SITING

In the Matter of:

<i>Electronic</i> Application of Telesto Energy)	
Project LLC for Certificate of Construction for)	
an approximately 110 Megawatt Merchant)	Case No.
Electric Solar Generating Facility in Hardin)	2022-00096
County, Kentucky)	

Notice of Filing

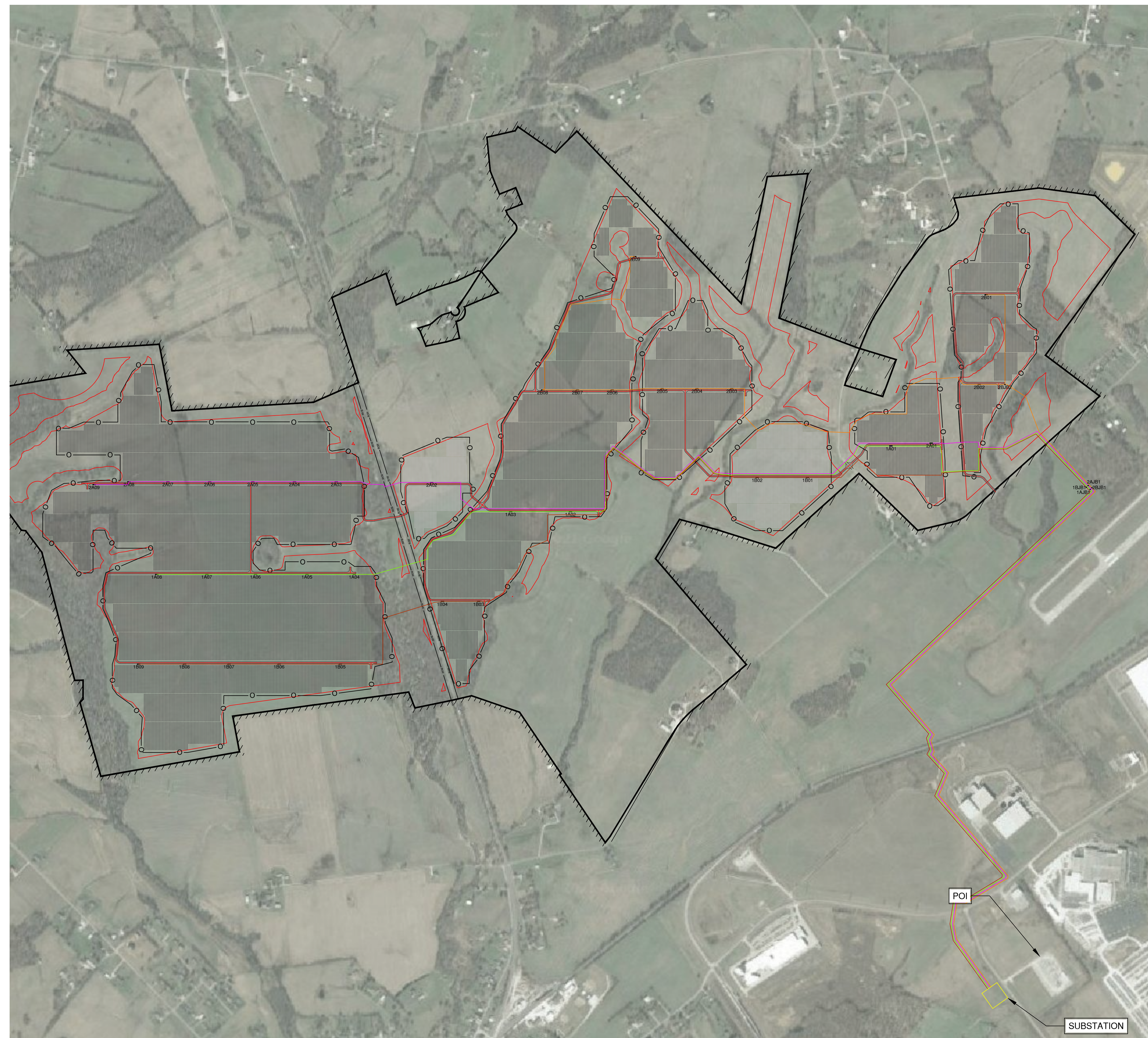
Telesto Energy Project LLC provides this Notice of Filing for its updated, “10% design” layout plan for the Project. The attached is a two-sheet supplement to Application Exhibit A and has been marked for identification and reference as Application Exhibit A.5. As with the initial layout plans filed with the Application as Exhibit A.1, this updated design remains preliminary and is not necessarily the final plan. Note, however, that the proposed Project boundaries within the leased properties have not changed from those in the initial layout filed with the Application.

Respectfully submitted,

/s/ Kathryn A. Eckert

Katherine K. Yunker
Kathryn A. Eckert
MCBRAYER PLLC
201 East Main St., Suite 900
Lexington, KY 40507
(859) 231-8780
kyunker@mcbayerfirm.com
keckert@mcbayerfirm.com

Counsel for Telesto Energy Project LLC



TELESTO SOLAR PROJECT		
INTERCONNECTION VOLTAGE	138 kV	
GEN-TIE LENGTH	0.1 MILES	
DC/AC RATIO AT POI	1.16	
DESIGN HIGH TEMP	33°C	
DESIGN MINIMUM TEMP	-18°C	
INVERTERS	(35) Power Electronics HEM FS3430 3550kVA (33°C RATING)	
TRANSFORMERS	(35) 3550 kVA	
SYSTEM SIZE (AC-POI)	110.0 MW	
RACKING TYPE	ATI SAT, 40.1% GCR, ±52° RANGE OF MOTION (2,936) 13 STRING TRACKERS; (353) 10 STRING TRACKERS; (249) 3 STRING TRACKERS; (87) 2 STRING TRACKERS	
RACKING QUANTITIES		
MODULE TYPE	FIRST SOLAR	JINKO
MODULES (MOD)	(250,182) FIRST SOLAR FS-6470-C	(25,788) JINKO JKM356M-72H-TV
SYSTEM SIZE (DC-STC)	117.6 MW	10.2 MW
STRINGING (STG)	(6) MOD/STG; (41,697) STGS	(28) MOD/STG; (921) STGS
MAX STRING VOC (NEG CALC)	1427.33 V	1461.77 V
ROAD LENGTH	33,133'	
FENCE LENGTH	62,739'	
FENCED AREA	566 ACRES	

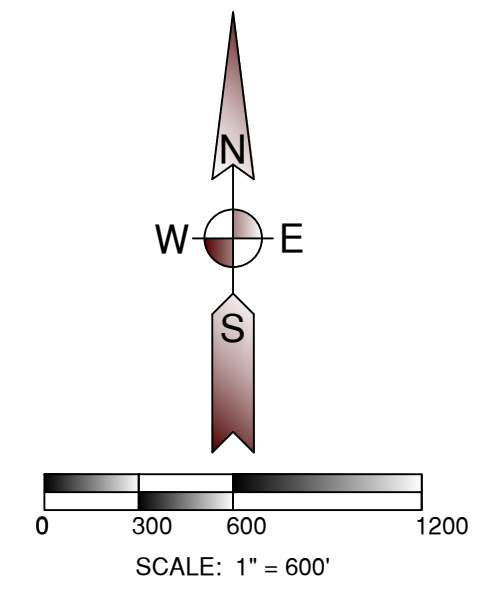
LEGEND	
	PROJECT BOUNDARIES
	PV BUILDABLE AREA
	SUBSTATION
	PROJECT ROAD
	PROJECT FENCE
	MV FEEDER 1A
	MV FEEDER 1B
	MV FEEDER 2A
	MV FEEDER 2B
	INVERTER SKID
	2 STRING TRACKER - FIRST SOLAR
	3 STRING TRACKER - FIRST SOLAR
	2 STRING TRACKER - JINKO
	3 STRING TRACKER - JINKO

TELESTO SOLAR PROJECT

HARDIN COUNTY, KENTUCKY

Rev	Date	Description	By
A	03/25/2022	10% DESIGN	UEI
B	07/08/2022	10% DESIGN RESUBMITTAL	UEI
C	08/19/2022	10% DESIGN RESUBMITTAL	UEI

Lightsource Renewable Energy North America
400 Montgomery Street, 8th floor, San Francisco, CA 94104
General: +1 (714) 333-0032
Web: www.lightsourcebp.com/us
info@lightsourcebp.com



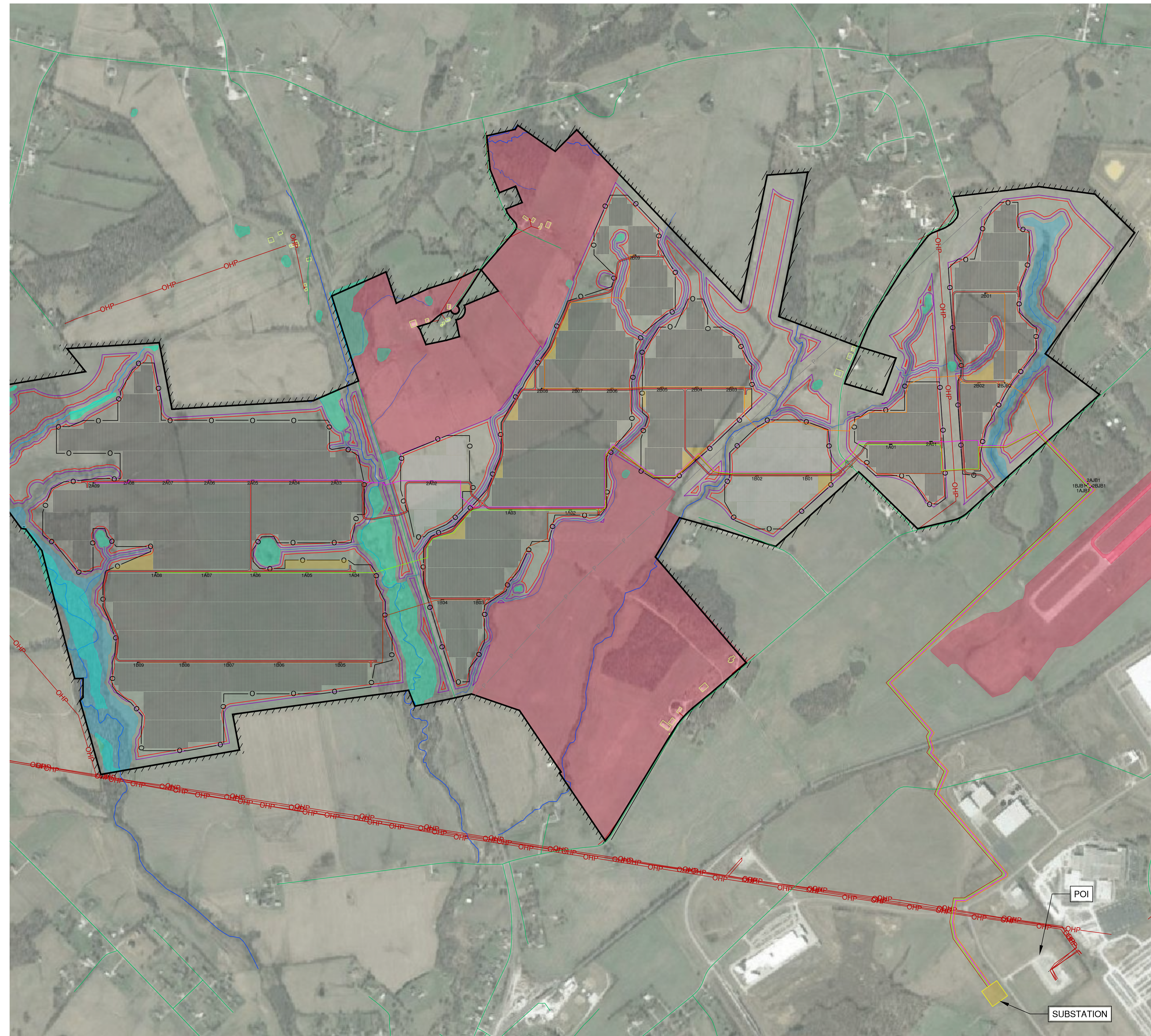
NAD83 Kentucky State Planes,
South Zone, US Foot

THIS DRAWING IS
PRELIMINARY AND NOT TO
BE USED FOR
CONSTRUCTION. FOR
REVIEW PURPOSES ONLY.

3350 38th Avenue South
Fargo, North Dakota 58104
Phone: 701.280.8500
Fax: 701.237.3191
www.ulteig.com
Project Number: 21.10242
Design By: J. BELTMAN
Drawn By: B. CAMPBELL
Approved By: N. BARNES

OVERALL ELECTRICAL SITE PLAN

DRAWING: TEL-PV-101
REVISION: C



TELESTO SOLAR PROJECT	
INTERCONNECTION VOLTAGE	138 kV
GEN-TIE LENGTH	0.1 MILES
DC/AC RATIO AT POI	1.16
DESIGN HIGH TEMP	33°C
DESIGN MINIMUM TEMP	-18°C
INVERTERS	(35) Power Electronics HEM FS3430 3550kVA (33°C RATING)
TRANSFORMERS	(35) 3550 kVA
SYSTEM SIZE (AC-POI)	110.0 MW
RACKING TYPE	ATI SAT, 40.1% GCR, ±52° RANGE OF MOTION (2,909) 13 STRING TRACKERS; (353) 10 STRING TRACKERS; (249) 3 STRING TRACKERS; (87) 2 STRING TRACKERS
RACKING QUANTITIES	
MODULE TYPE	FIRST SOLAR JINKO TOTAL
MODULES (MOD)	(250,182) FIRST SOLAR FS-6470-C (25,788) JINKO JKM356M-72H-TV (275,970) TOTAL MODS
SYSTEM SIZE (DC-STC)	117.6 MW 10.2 MW 127.8 MW
STRINGING (STG)	(6) MOD/STG; (41,697) STGS (28) MOD/STG; (921) STGS (42,618) TOTAL STRINGS
MAX STRING VOC (NEG CALC)	1427.33 V 1461.77 V N/A
ROAD LENGTH	33,133'
FENCE LENGTH	62,739'
FENCED AREA	566 ACRES

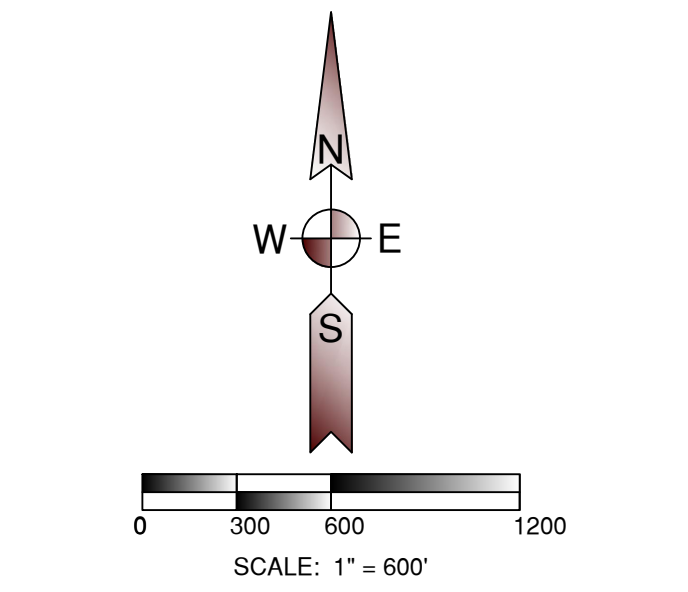
LEGEND	
	PROJECT BOUNDARIES
	PV BUILDABLE AREA
	SUBSTATION
	PUBLIC ROAD/RAIL
	OVERHEAD POWER LINES
	PIPELINES
	WELL LOCATION
	DELINEATED WETLANDS
	DELINEATED STREAMS
	DO NOT DISTURB AREAS
	LAYDOWN & SUBSTATION ONLY
	RESIDENTIAL BUILDINGS
	FLOOD DEPTH CONSTRAINTS
	FEMA 100-YEAR FLOOD HAZARD
	CONSTRAINT SETBACKS
	PROJECT ROAD
	PROJECT FENCE
	MV FEEDER 1A
	MV FEEDER 1B
	MV FEEDER 2A
	MV FEEDER 2B
	INVERTER SKID
	10 STRING TRACKER - FIRST SOLAR
	13 STRING TRACKER - FIRST SOLAR
	2 STRING TRACKER - JINKO
	3 STRING TRACKER - JINKO

TELESTO SOLAR PROJECT

HARDIN COUNTY, KENTUCKY

Rev	Date	Description	By
A	03/25/2022	10% DESIGN	UEI
B	07/08/2022	10% DESIGN RESUBMITTAL	UEI
C	08/19/2022	10% DESIGN RESUBMITTAL	UEI

Lightsource Renewable Energy North America
400 Montgomery Street, 8th floor, San Francisco, CA 94104
General: +1 (714) 333-0032
Web: www.lightsourcebp.com/us
info@lightsourcebp.com



NAD83 Kentucky State Planes,
South Zone, US Foot

THIS DRAWING IS
PRELIMINARY AND NOT TO
BE USED FOR
CONSTRUCTION. FOR
REVIEW PURPOSES ONLY.

3350 38th Avenue South
Fargo, North Dakota 58104
Phone: 701.280.8500
Fax: 701.237.3191
www.ulteig.com
Project Number: 21.10242
Design By: J. BELTMAN
Drawn By: B. CAMPBELL
Approved By: N. BARNES

OVERALL ELECTRICAL SITE PLAN 2

DRAWING: TEL-PV-102 REVISION: C