



Wednesday, December 5, 2018

RE: Ballard County Zoning Plots

Site Name: **EV Barlow.**

To Whom It May Concern:

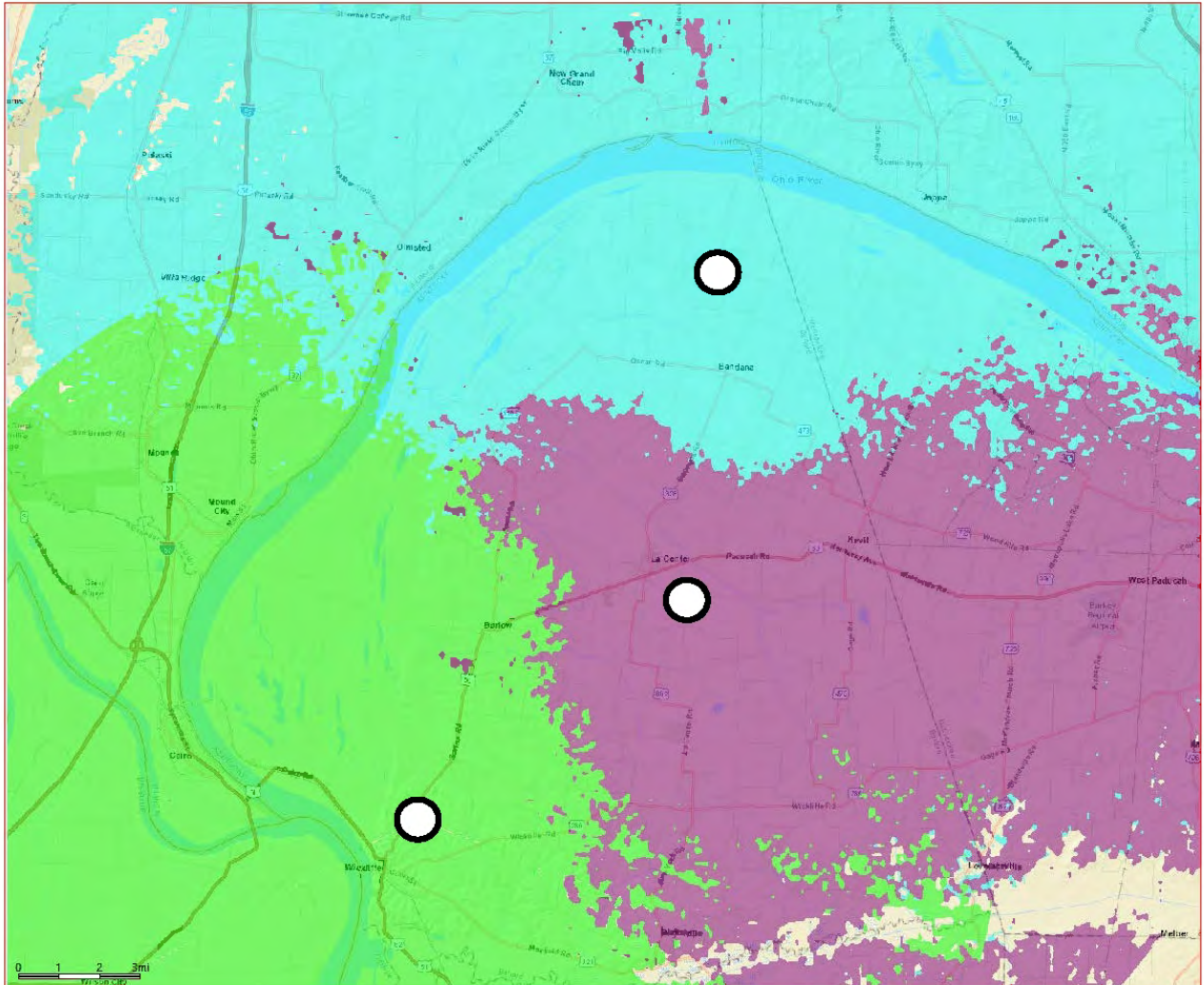
This map is not a guarantee of coverage and may contain areas with no service. This map reflects a depiction of predicted and approximate wireless coverage of the network and is intended to provide a relative comparison of coverage. The depictions of coverage do not guarantee service availability as there are many factors that can influence coverage and service availability. These factors vary from location to location and change over time. The coverage areas may include locations with limited or no coverage. Even within a coverage area shown, there are many factors, including but not limited to, usage volumes, service, outage, and customer's equipment, and terrain, proximity to buildings, foliage, and weather that may impact service.

The proposed site is needed to offload capacity from existing sites. This map reflects the predicted coverage area that will be offloaded from existing sites and transferred to the proposed site.

Michael Fahim.

RF Engineer, Verizon Wireless

EV Barlow Pre



Legend:

Existing Verizon Sites	○
Proposed Verizon Site	●
Future Verizon Site	○
County Border	-----

EV Barlow Post

