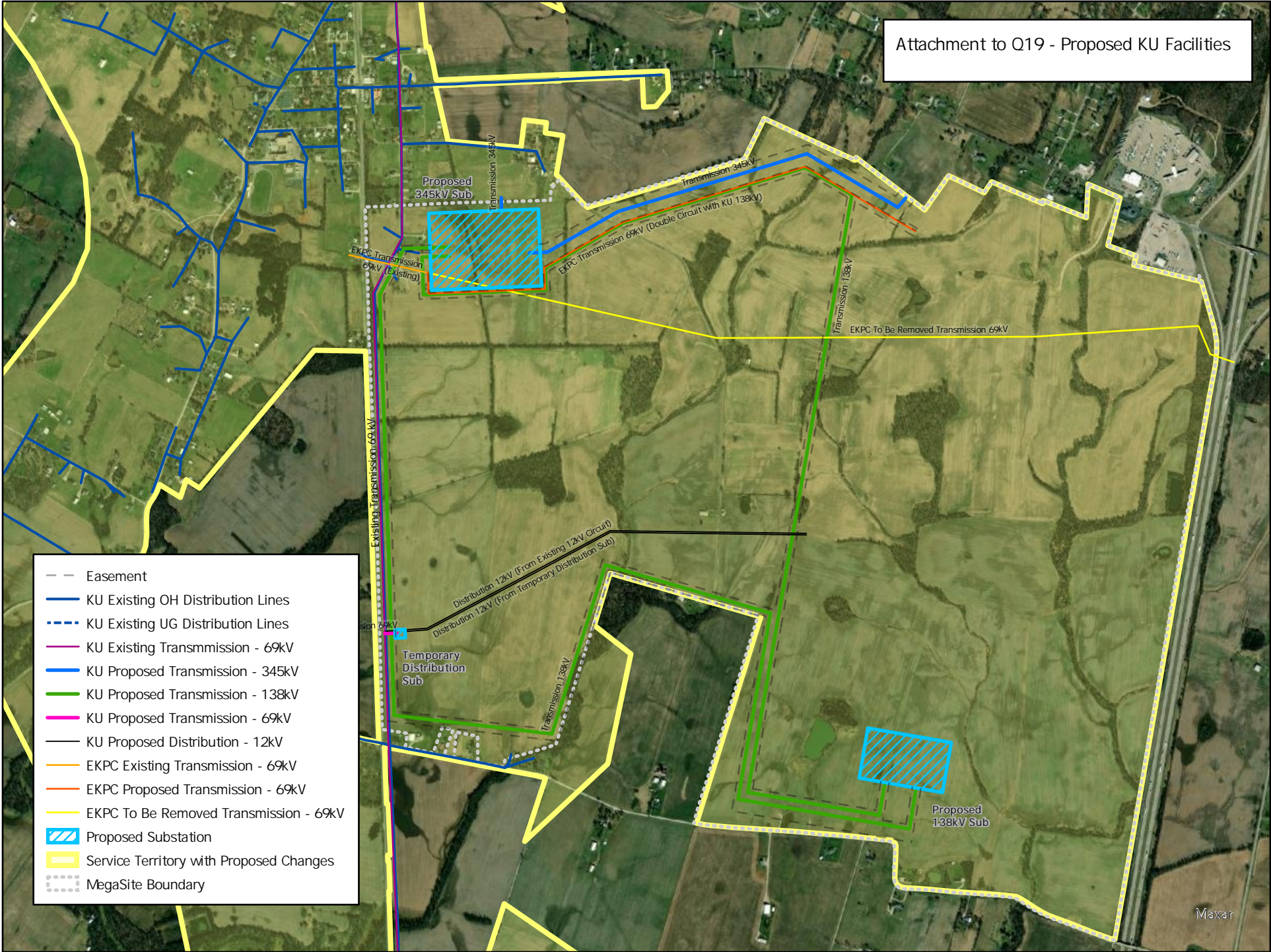


Attachment to Q19 - Proposed KU Facilities



- - Easement
- KU Existing OH Distribution Lines
- - - KU Existing UG Distribution Lines
- KU Existing Transmission - 69kV
- KU Proposed Transmission - 345kV
- KU Proposed Transmission - 138kV
- KU Proposed Transmission - 69kV
- KU Proposed Distribution - 12kV
- EKPC Existing Transmission - 69kV
- EKPC Proposed Transmission - 69kV
- EKPC To Be Removed Transmission - 69kV
- ▨ Proposed Substation
- ▭ Service Territory with Proposed Changes
- ⋯ MegaSite Boundary