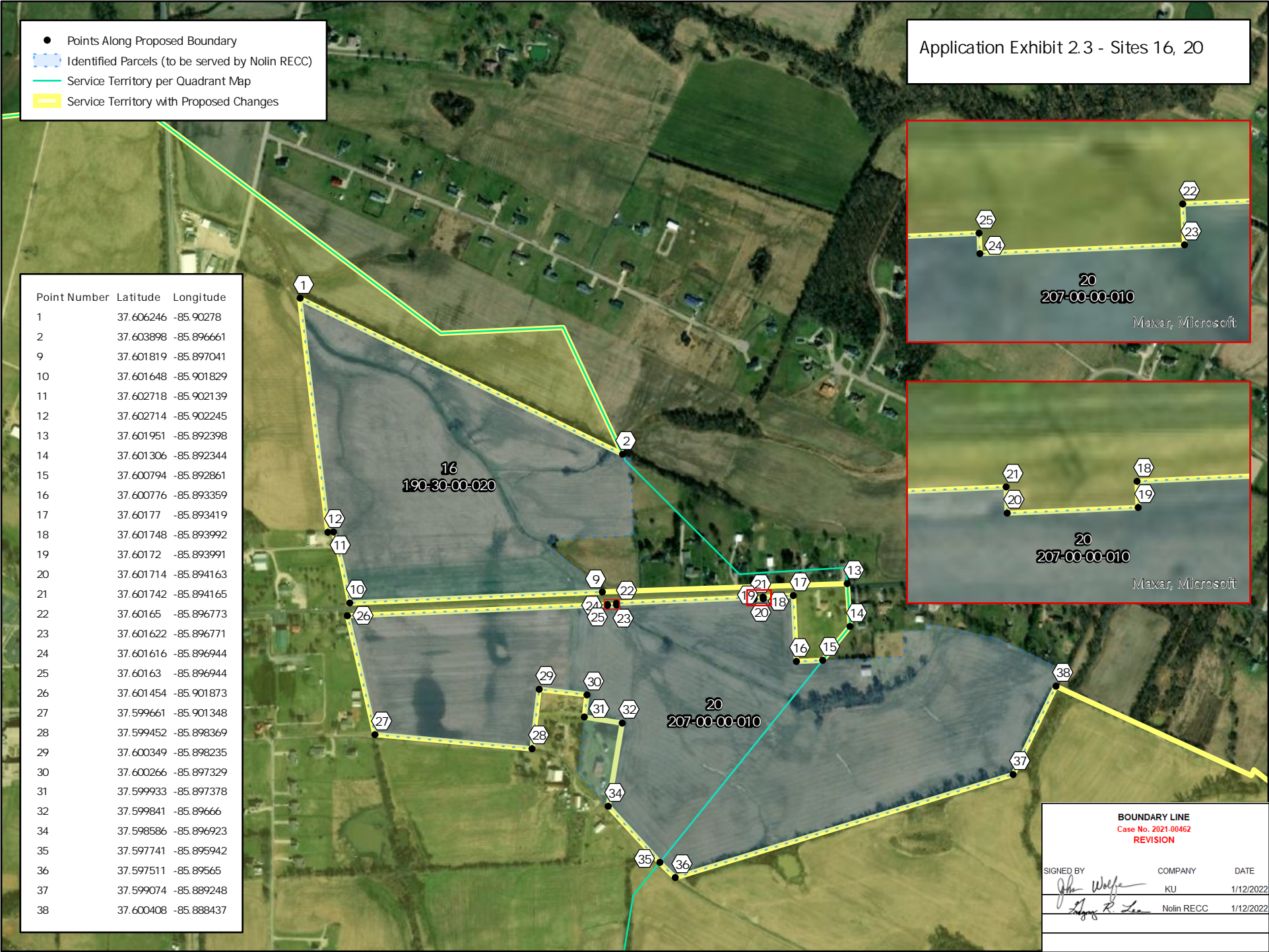
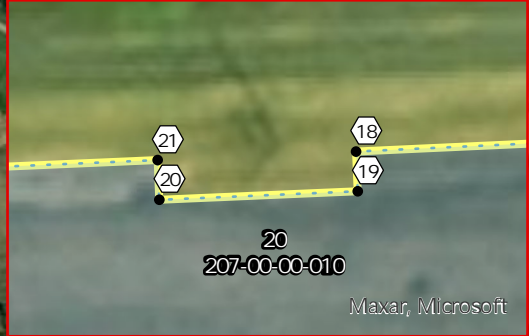
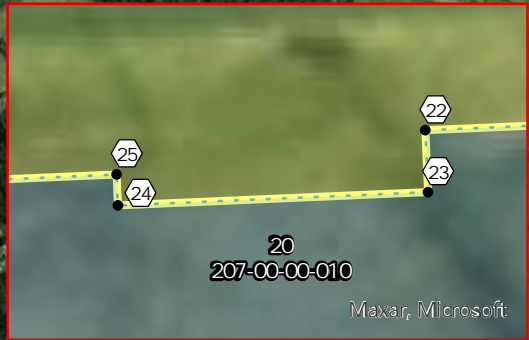


Application Exhibit 2.3 - Sites 16, 20

- Points Along Proposed Boundary
- ▭ Identified Parcels (to be served by Nolin RECC)
- Service Territory per Quadrant Map
- ▭ Service Territory with Proposed Changes

Point Number	Latitude	Longitude
1	37.606246	-85.90278
2	37.603898	-85.896661
9	37.601819	-85.897041
10	37.601648	-85.901829
11	37.602718	-85.902139
12	37.602714	-85.902245
13	37.601951	-85.892398
14	37.601306	-85.892344
15	37.600794	-85.892861
16	37.600776	-85.893359
17	37.60177	-85.893419
18	37.601748	-85.893992
19	37.60172	-85.893991
20	37.601714	-85.894163
21	37.601742	-85.894165
22	37.60165	-85.896773
23	37.601622	-85.896771
24	37.601616	-85.896944
25	37.60163	-85.896944
26	37.601454	-85.901873
27	37.599661	-85.901348
28	37.599452	-85.898369
29	37.600349	-85.898235
30	37.600266	-85.897329
31	37.599933	-85.897378
32	37.599841	-85.89666
34	37.598586	-85.896923
35	37.597741	-85.895942
36	37.597511	-85.89565
37	37.599074	-85.889248
38	37.600408	-85.888437



BOUNDARY LINE		
Case No. 2021-00462		
REVISION		
SIGNED BY	COMPANY	DATE
<i>John Wolfe</i>	KU	1/12/2022
<i>Edgar R. Lee</i>	Nolin RECC	1/12/2022