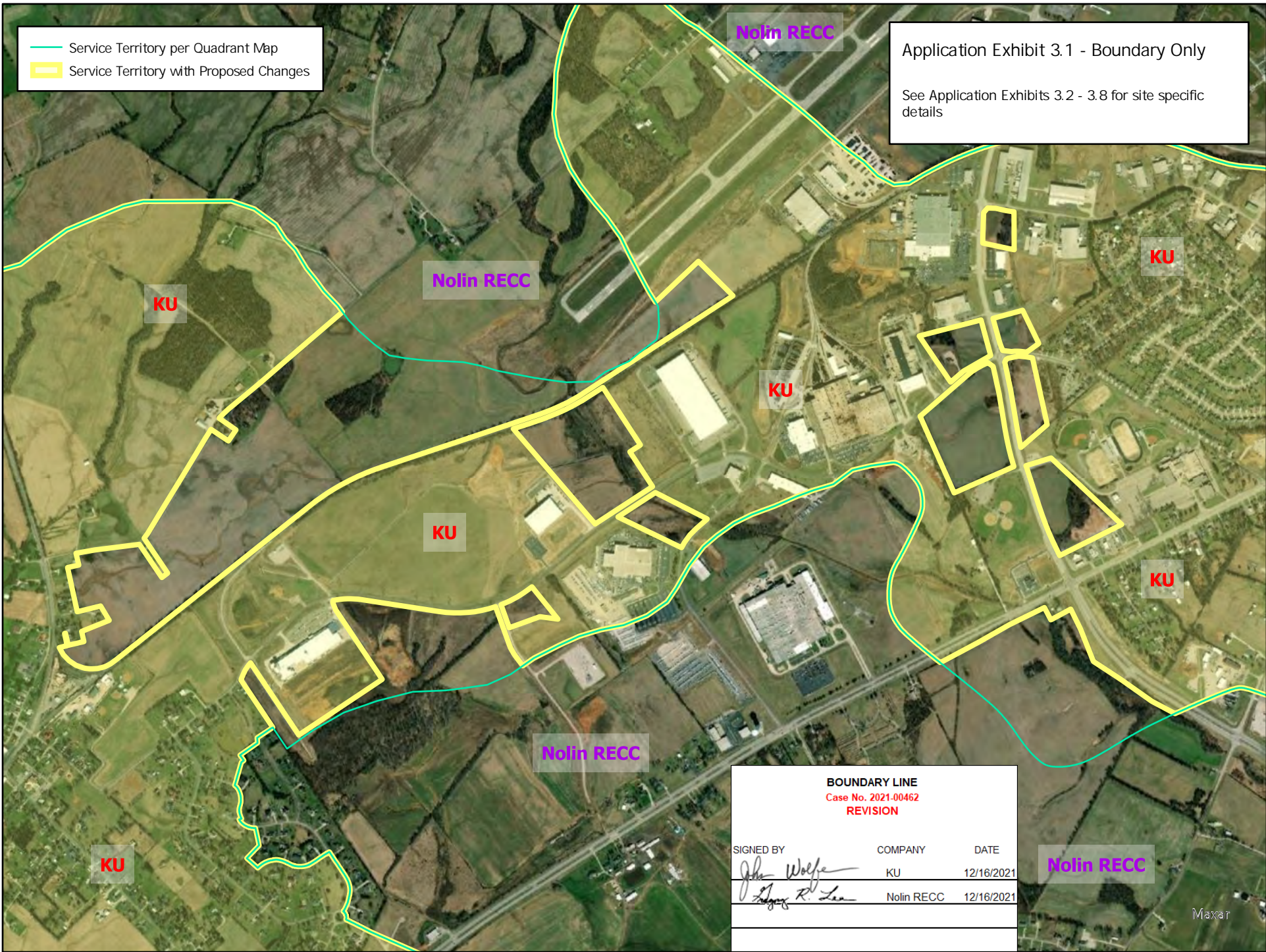


— Service Territory per Quadrant Map
 Service Territory with Proposed Changes

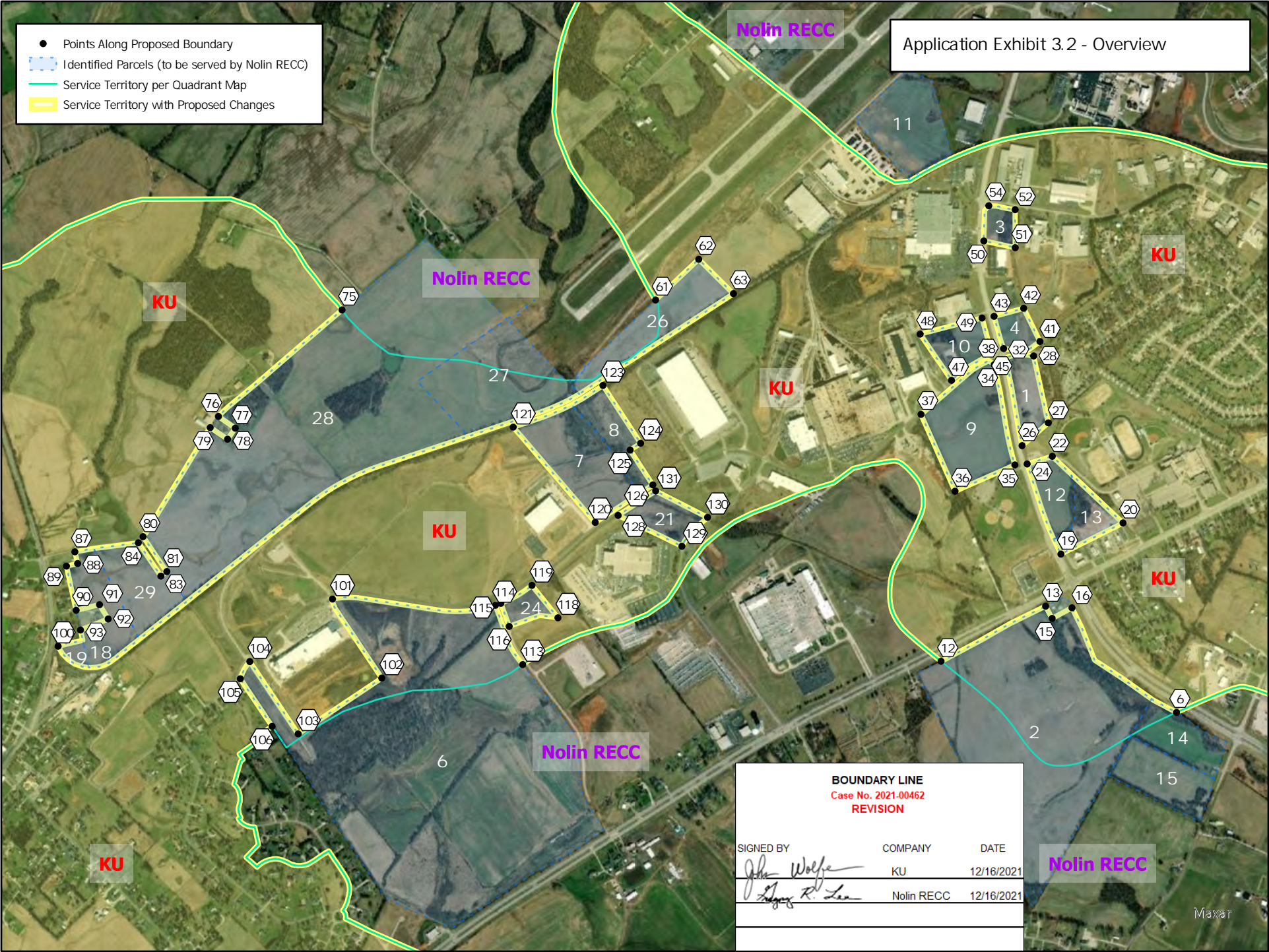
Application Exhibit 3.1 - Boundary Only
 See Application Exhibits 3.2 - 3.8 for site specific details



BOUNDARY LINE		
Case No. 2021-00462		
REVISION		
SIGNED BY	COMPANY	DATE
<i>John Wolfe</i>	KU	12/16/2021
<i>Robert R. Lee</i>	Nolin RECC	12/16/2021

Application Exhibit 3.2 - Overview

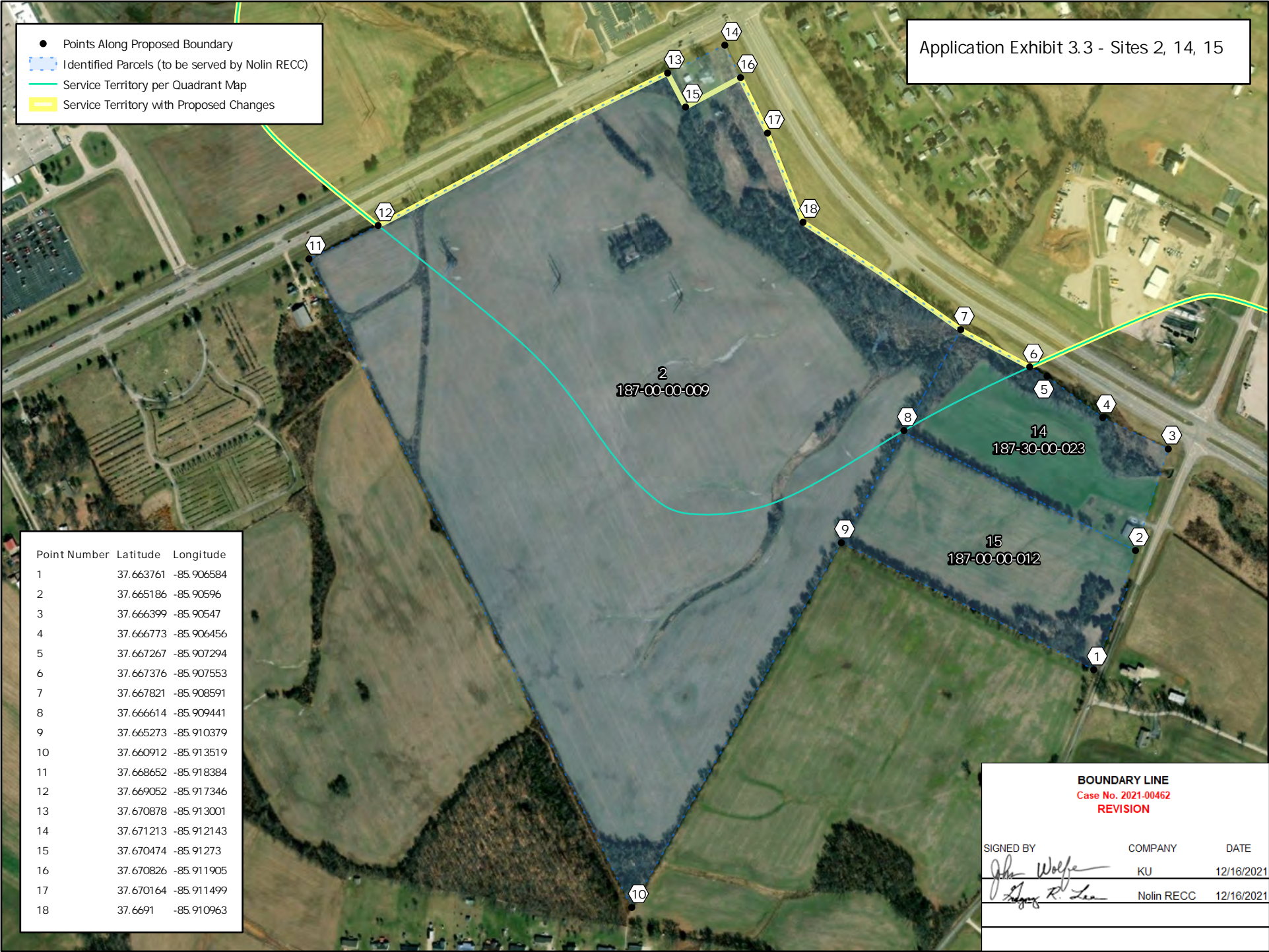
- Points Along Proposed Boundary
- ▭ Identified Parcels (to be served by Nolin RECC)
- Service Territory per Quadrant Map
- ▭ Service Territory with Proposed Changes



BOUNDARY LINE		
Case No. 2021-00462		
REVISION		
SIGNED BY	COMPANY	DATE
<i>John Wolfe</i>	KU	12/16/2021
<i>Logan R. Lea</i>	Nolin RECC	12/16/2021

Application Exhibit 3.3 - Sites 2, 14, 15

- Points Along Proposed Boundary
- ▭ Identified Parcels (to be served by Nolin RECC)
- Service Territory per Quadrant Map
- ▭ Service Territory with Proposed Changes



Point Number	Latitude	Longitude
1	37.663761	-85.906584
2	37.665186	-85.90596
3	37.666399	-85.90547
4	37.666773	-85.906456
5	37.667267	-85.907294
6	37.667376	-85.907553
7	37.667821	-85.908591
8	37.666614	-85.909441
9	37.665273	-85.910379
10	37.660912	-85.913519
11	37.668652	-85.918384
12	37.669052	-85.917346
13	37.670878	-85.913001
14	37.671213	-85.912143
15	37.670474	-85.91273
16	37.670826	-85.911905
17	37.670164	-85.911499
18	37.6691	-85.910963

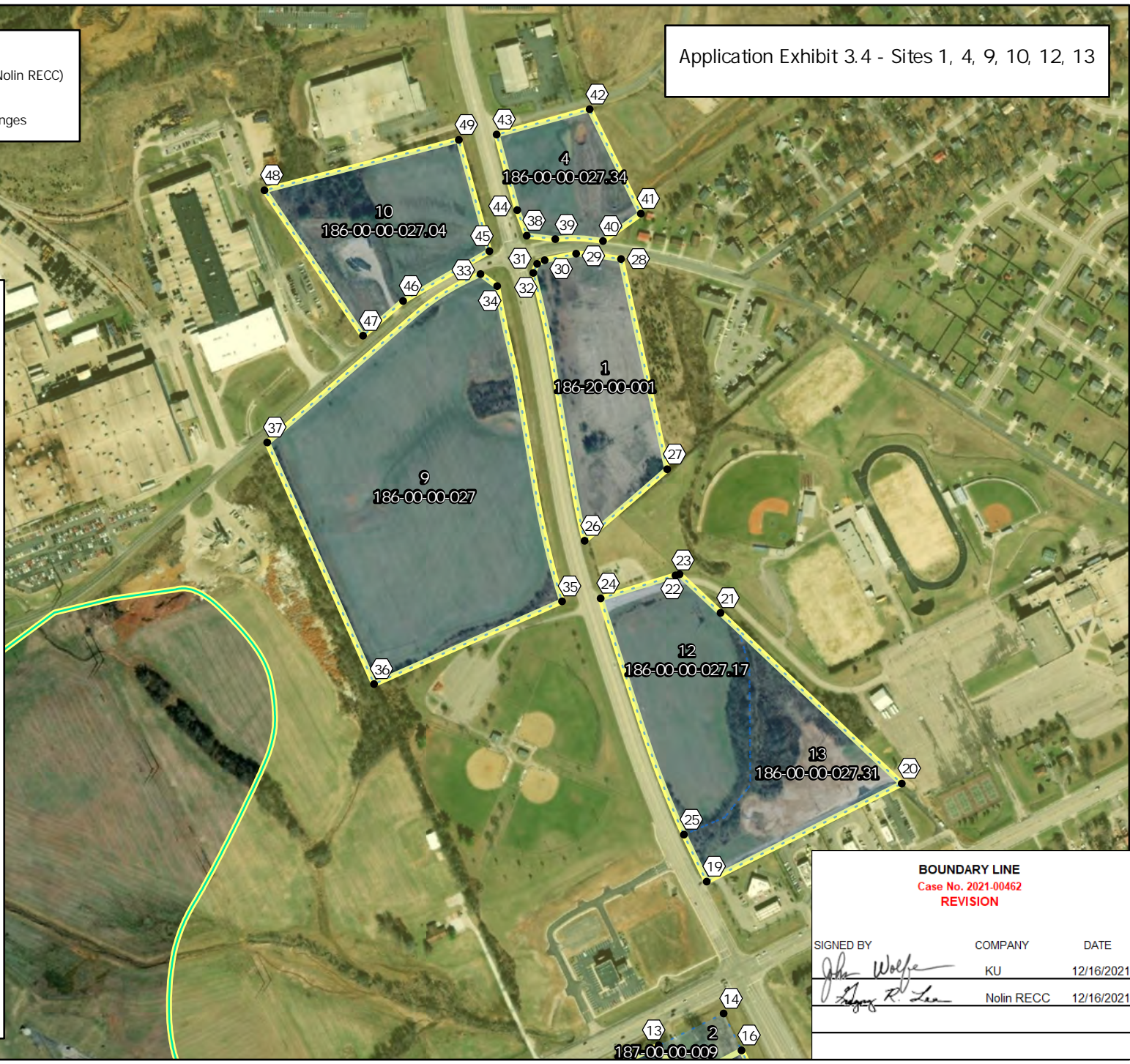
BOUNDARY LINE
Case No. 2021-00462
REVISION

SIGNED BY	COMPANY	DATE
<i>John Wolfe</i>	KU	12/16/2021
<i>Logan R. Lee</i>	Nolin RECC	12/16/2021

Application Exhibit 3.4 - Sites 1, 4, 9, 10, 12, 13

- Points Along Proposed Boundary
- ▭ Identified Parcels (to be served by Nolin RECC)
- Service Territory per Quadrant Map
- ▭ Service Territory with Proposed Changes

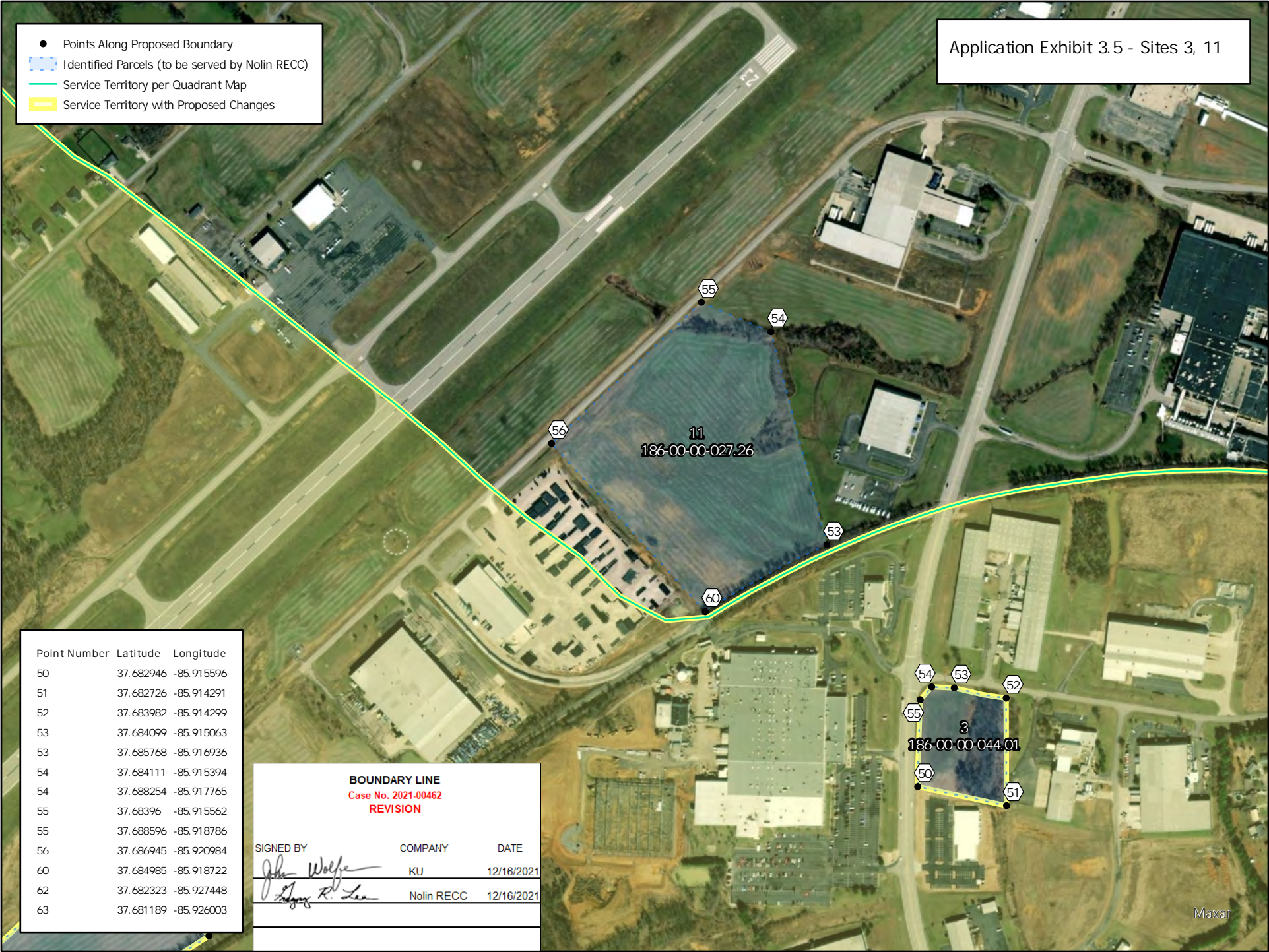
Point Number	Latitude	Longitude
13	37.670878	-85.913001
14	37.671213	-85.912143
16	37.670826	-85.911905
19	37.672601	-85.912369
20	37.673635	-85.909791
21	37.675427	-85.912193
22	37.675833	-85.912735
23	37.675821	-85.91279
24	37.675578	-85.91378
25	37.673094	-85.912672
26	37.676184	-85.913993
27	37.676938	-85.912902
28	37.679148	-85.913518
29	37.679204	-85.914112
30	37.679134	-85.914528
31	37.679096	-85.914627
32	37.679	-85.914678
33	37.678987	-85.915377
34	37.678861	-85.915156
35	37.675546	-85.91429
36	37.674673	-85.916776
37	37.677212	-85.918196
38	37.679392	-85.914767
39	37.679356	-85.914388
40	37.679337	-85.913757
41	37.679626	-85.913257
42	37.680723	-85.913936
43	37.680455	-85.915166
44	37.679661	-85.914893
45	37.679228	-85.91526
46	37.678703	-85.916401
47	37.678337	-85.91693
48	37.679865	-85.918238
49	37.680398	-85.915667



BOUNDARY LINE		
Case No. 2021-00462		
REVISION		
SIGNED BY	COMPANY	DATE
<i>John Wolfe</i>	KU	12/16/2021
<i>Angus R. Lee</i>	Nolin RECC	12/16/2021

Application Exhibit 3.5 - Sites 3, 11

- Points Along Proposed Boundary
- ▭ Identified Parcels (to be served by Nolin RECC)
- Service Territory per Quadrant Map
- ▭ Service Territory with Proposed Changes



Point Number	Latitude	Longitude
50	37.682946	-85.915596
51	37.682726	-85.914291
52	37.683982	-85.914299
53	37.684099	-85.915063
53	37.685768	-85.916936
54	37.684111	-85.915394
54	37.688254	-85.917765
55	37.68396	-85.915562
55	37.688596	-85.918786
56	37.686945	-85.920984
60	37.684985	-85.918722
62	37.682323	-85.927448
63	37.681189	-85.926003

BOUNDARY LINE
Case No. 2021-00462
REVISION

SIGNED BY	COMPANY	DATE
<i>John Wolfe</i>	KU	12/16/2021
<i>Logan R. Lee</i>	Nolin RECC	12/16/2021

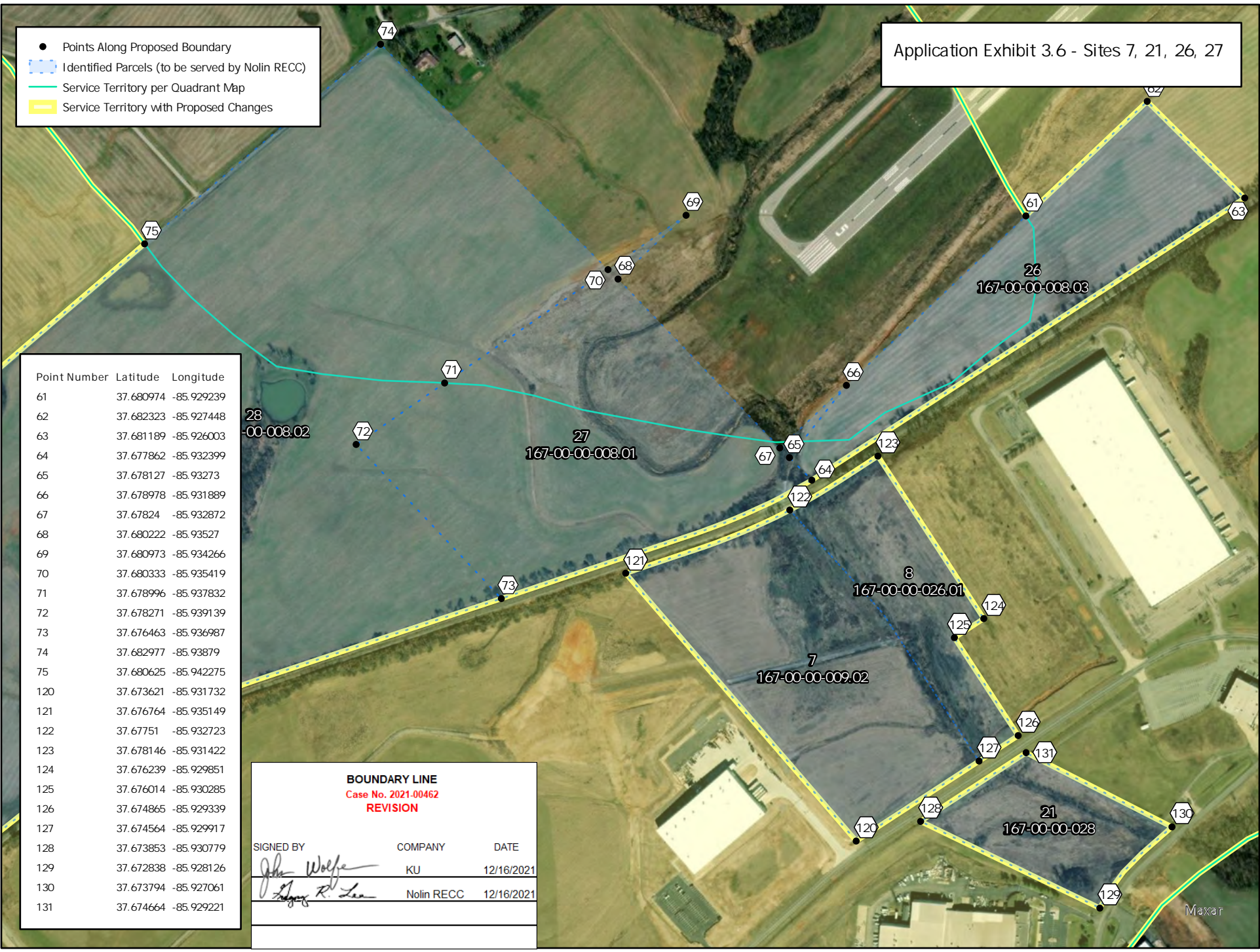
Application Exhibit 3.6 - Sites 7, 21, 26, 27

- Points Along Proposed Boundary
- ▭ Identified Parcels (to be served by Nolin RECC)
- Service Territory per Quadrant Map
- ▭ Service Territory with Proposed Changes

Point Number	Latitude	Longitude
61	37.680974	-85.929239
62	37.682323	-85.927448
63	37.681189	-85.926003
64	37.677862	-85.932399
65	37.678127	-85.93273
66	37.678978	-85.931889
67	37.67824	-85.932872
68	37.680222	-85.93527
69	37.680973	-85.934266
70	37.680333	-85.935419
71	37.678996	-85.937832
72	37.678271	-85.939139
73	37.676463	-85.936987
74	37.682977	-85.93879
75	37.680625	-85.942275
120	37.673621	-85.931732
121	37.676764	-85.935149
122	37.67751	-85.932723
123	37.678146	-85.931422
124	37.676239	-85.929851
125	37.676014	-85.930285
126	37.674865	-85.929339
127	37.674564	-85.929917
128	37.673853	-85.930779
129	37.672838	-85.928126
130	37.673794	-85.927061
131	37.674664	-85.929221

BOUNDARY LINE
Case No. 2021-00462
REVISION

SIGNED BY	COMPANY	DATE
<i>John Wolfe</i>	KU	12/16/2021
<i>Angus R. Lee</i>	Nolin RECC	12/16/2021



Application Exhibit 3.7 - Sites 18, 19, 28, 29

- Points Along Proposed Boundary
- ▭ Identified Parcels (to be served by Nolin RECC)
- Service Territory per Quadrant Map
- ▭ Service Territory with Proposed Changes

Point Number	Latitude	Longitude
71	37.678996	-85.937832
72	37.678271	-85.939139
73	37.676463	-85.936987
74	37.682977	-85.93879
75	37.680625	-85.942275
76	37.677097	-85.947404
77	37.67671	-85.946703
78	37.676346	-85.947021
79	37.676727	-85.947746
80	37.673119	-85.950527
81	37.671965	-85.949537
82	37.670983	-85.948697
83	37.671816	-85.949783
84	37.672915	-85.950722
85	37.672723	-85.952577
86	37.669727	-85.950676
87	37.672611	-85.95336
88	37.672225	-85.953245
89	37.67214	-85.95371
90	37.670679	-85.953302
91	37.670867	-85.95233
92	37.670395	-85.951969
93	37.670027	-85.953119
94	37.669689	-85.953025
95	37.668788	-85.952773
96	37.669563	-85.953676
97	37.669966	-85.953789
98	37.669958	-85.953829
99	37.669555	-85.953716
100	37.669491	-85.954048
101	37.67107	-85.942647
102	37.668462	-85.940592
103	37.666609	-85.944061
104	37.668997	-85.946079
105	37.668428	-85.946472
106	37.666858	-85.945145

BOUNDARY LINE
Case No. 2021-00462
REVISION

SIGNED BY	COMPANY	DATE
<i>John Wolfe</i>	KU	12/16/2021
<i>Edgar R. Lee</i>	Nolin RECC	12/16/2021



Application Exhibit 3.8 - Sites 6, 24

- Points Along Proposed Boundary
- ▭ Identified Parcels (to be served by Nolin RECC)
- Service Territory per Quadrant Map
- Service Territory with Proposed Changes

29
147-30-01-058.01

Point Number	Latitude	Longitude
81	37.671965	-85.949537
82	37.670983	-85.948697
83	37.671816	-85.949783
101	37.671107	-85.942647
102	37.668462	-85.940592
103	37.666609	-85.944061
104	37.668997	-85.946079
105	37.668428	-85.946472
106	37.666858	-85.945145
107	37.664657	-85.943284
108	37.664618	-85.943339
109	37.661178	-85.940398
110	37.660187	-85.937645
111	37.662382	-85.933337
112	37.663458	-85.93133
113	37.668916	-85.934735
114	37.670873	-85.935875
115	37.670939	-85.935649
116	37.670177	-85.935299
117	37.670546	-85.934026
118	37.670465	-85.933274
119	37.671535	-85.934356
129	37.672838	-85.928126

6
168-00-00-042

24
168-00-00-005.02

BOUNDARY LINE
Case No. 2021-00462
REVISION

SIGNED BY	COMPANY	DATE
<i>John Wolfe</i>	KU	12/16/2021
<i>Lizette R. Lee</i>	Nolin RECC	12/16/2021