

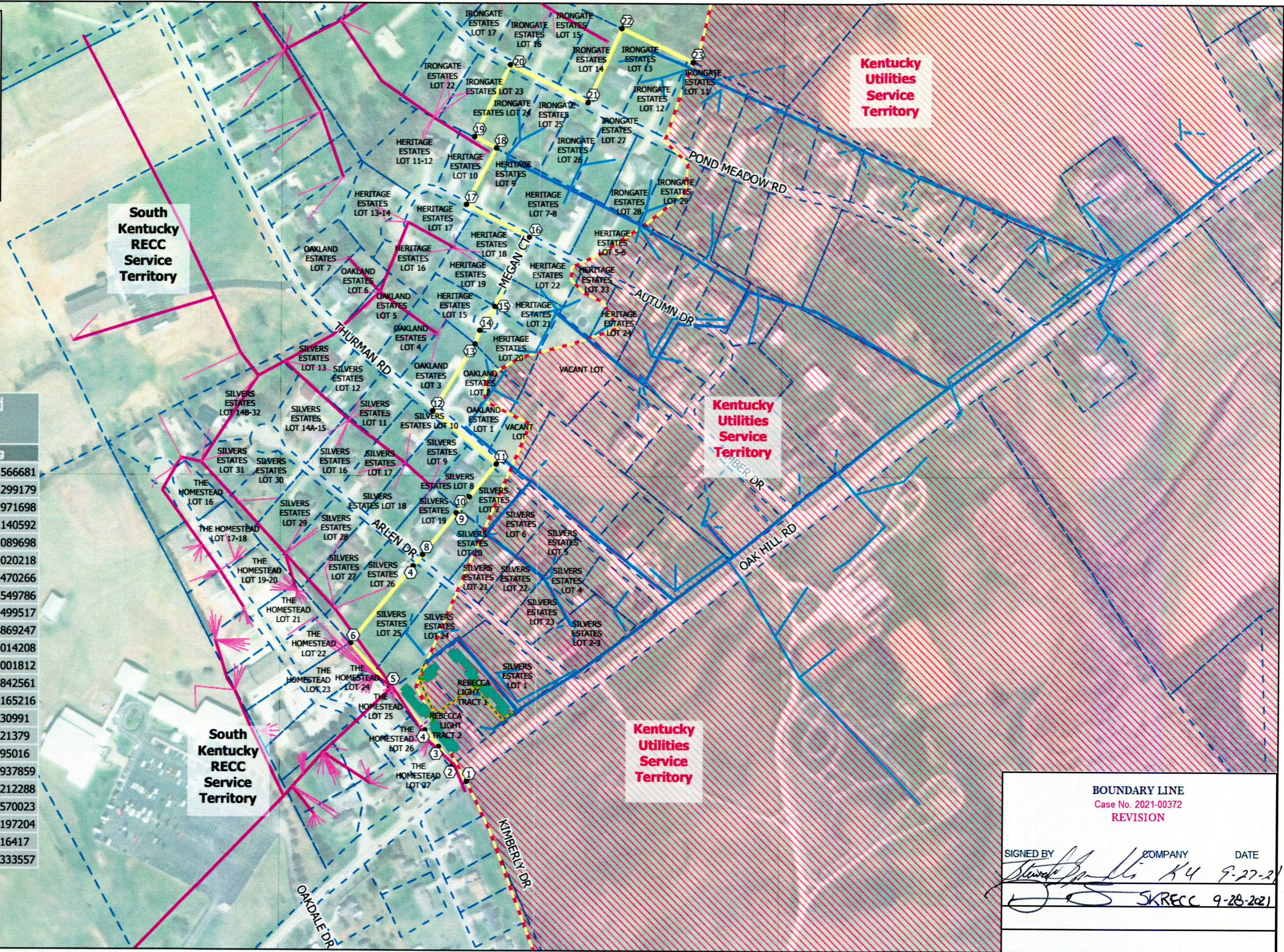
**Legend**

- KU UG Services
- KU OH Services
- KU Proposed UG Services
- KU Existing OH Primary
- KU Proposed UG Primary
- South Kentucky RECC Primary\*
- South Kentucky RECC Services\*
- South Kentucky RECC Proposed UG Primary\*
- Proposed Boundary
- Proposed Buildings
- Existing Territorial Line

\*Data provided by South Kentucky RECC

**Points Along Proposed Boundary**

Point Number	Easting	Northing
1	5246939.929503	1909561.566681
2	5246901.533985	1909606.299179
3	5246861.410044	1909655.971698
4	5246823.279046	1909702.140592
4	5246789.301655	1910153.089698
5	5246724.277089	1909822.020218
6	5246616.734641	1909940.470266
8	5246814.688211	1910184.549786
9	5246908.325511	1910299.499517
10	5246944.330872	1910343.869247
11	5247017.772155	1910434.014208
12	5246840.726728	1910580.001812
13	5246957.092274	1910764.842561
14	5246970.208007	1910802.165216
15	5247010.820183	1910868.30991
16	5247105.839738	1911058.21379
17	5246930.644333	1911190.95016
18	5247012.43984	1911194.937859
19	5246952.093069	1911172.212288
20	5247049.819498	1911268.570023
21	5247266.745907	1911410.197204
22	5247359.612491	1911435.16417
23	5247558.551819	1911647.333557



**BOUNDARY LINE**  
Case No. 2021-00372  
**REVISION**

SIGNED BY	COMPANY	DATE
<i>Stewart J. ...</i>	KY	9-27-21
<i>[Signature]</i>	SKRECC	9-28-2021