

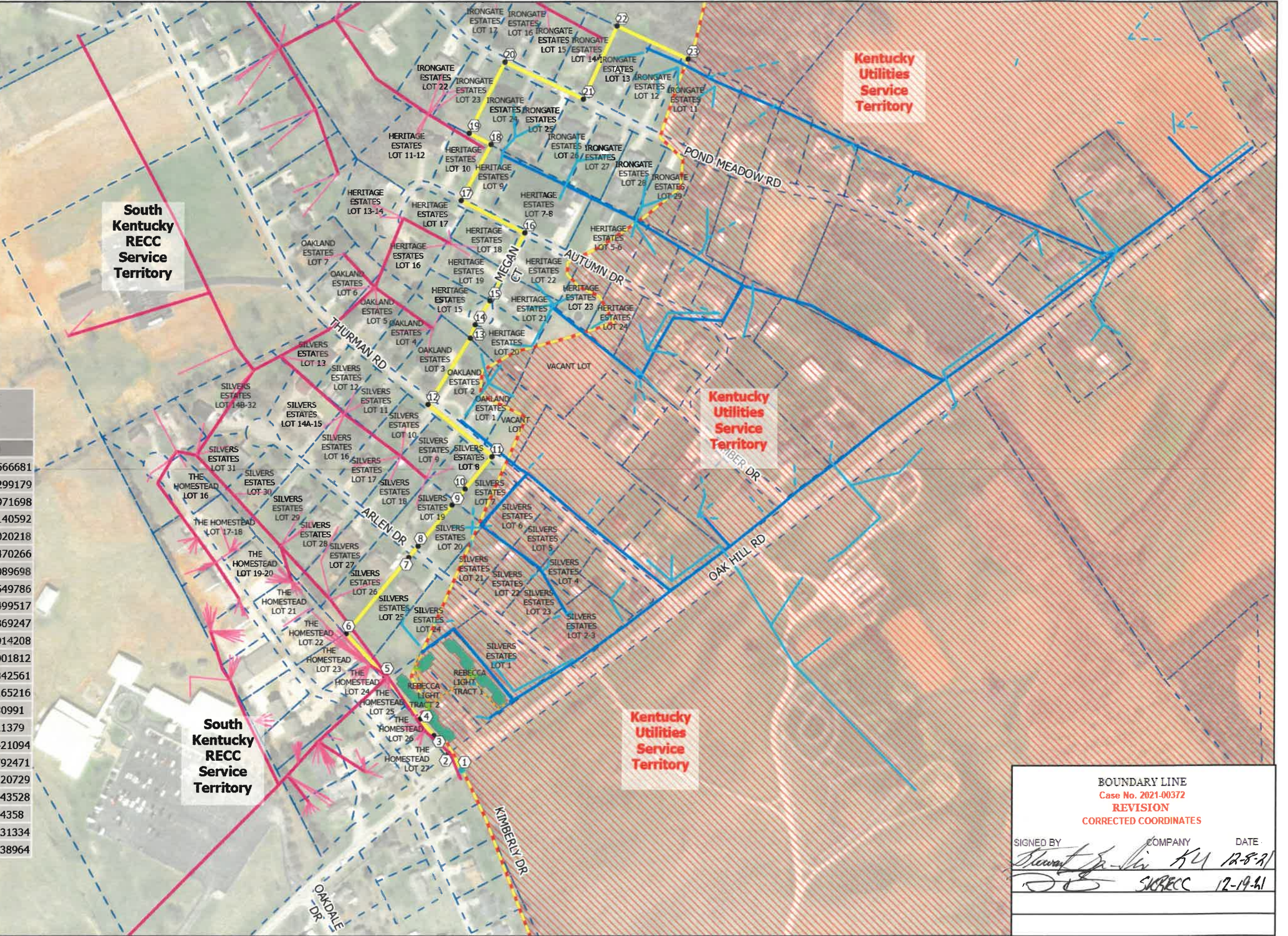
Legend

- KU UG Services
- KU OH Services
- KU Proposed UG Services
- KU Existing OH Primary
- KU Proposed UG Primary
- South Kentucky RECC Primary*
- South Kentucky RECC Services*
- South Kentucky RECC Proposed UG Primary*
- Proposed Boundary
- Proposed Buildings
- Existing Territorial Line

*Data provided by South Kentucky RECC

Points Along Proposed Boundary

Point Number	Easting	Northing
1	1966091.252502	1909561.566681
2	1966052.865348	1909606.299179
3	1966012.750574	1909655.971698
4	1965974.628135	1909702.140592
5	1965875.648393	1909822.020218
6	1965768.128346	1909940.470266
7	1965940.718209	1910153.089698
8	1965966.108156	1910184.549786
9	1966059.757809	1910299.499517
10	1966095.767947	1910343.869247
11	1966169.218926	1910434.014208
12	1965992.203193	1910580.001812
13	1966108.590249	1910764.842561
14	1966121.710817	1910802.165216
15	1966162.330744	1910868.30991
16	1966257.373582	1911058.21379
17	1966082.199591	1911148.421094
18	1966164.01396	1911303.792471
19	1966103.674611	1911335.220729
20	1966201.425354	1911532.943528
21	1966418.326578	1911430.14358
22	1966511.218521	1911633.231334
23	1966710.135053	1911541.038964



BOUNDARY LINE
Case No. 2021-00372
REVISION
CORRECTED COORDINATES

SIGNED BY	COMPANY	DATE
<i>Stewart J. ...</i>	KU	12-8-21
<i>...</i>	SKRECC	12-19-21