



Big Rivers Electric Corporation
710 West 2nd Street
Owensboro, KY 42301
www.bigrivers.com
(270) 827-2561

October 5, 2023

VIA ELECTRONIC FILING

Ms. Linda C. Bridwell
Executive Director
Public Service Commission
211 Sower Boulevard, P.O. Box 615
Frankfort, Kentucky 40602-0615

Re: *In the Matter of: Electronic Application of Big Rivers Electric Corporation for a Certificate Of Public Convenience and Necessity to Construct a 161 KV Transmission Line in McCracken County, Kentucky*
- **Case No. 2021-00275**

Dear Ms. Bridwell:

In compliance with Ordering Paragraphs No. 5 and No. 6 of the Public Service Commission's January 14, 2022, order in this matter directing Big Rivers Electric Corporation ("Big Rivers") to file "as built" drawings or maps and documentation of the total costs of the 161 kV transmission line in McCracken County, Big Rivers submits the below statement and the attached copy of "as built" drawings for the project.

The substantial completion of the McCracken County transmission line occurred on August 7, 2023. Final invoices are still being received and the total cost of the project is forecasted to be \$8,496,102. Construction costs associated with this project will be classified into the following transmission plant accounts in accordance with the Uniform System for Accounts for electric utilities:

Ms. Linda C. Bridwell

October 5, 2023

Page 2

RUS Account	Account Description	Asset Descriptions
350	Land & Land Rights	Land and easement purchases
355	Poles & Fixtures	Guy assemblies, cross arms, braces, and settings
356	Overhead Conductor & Devices	Conductors, ground wires, insulators, switches, overhead optical ground wire, and other line devices

This letter constitutes the Read1st file required by 807 KAR 5:001 Section 8(5).

The Commission excused no parties to this proceeding from its electronic filing procedures. Please feel free to contact me should you have any questions regarding this filing.

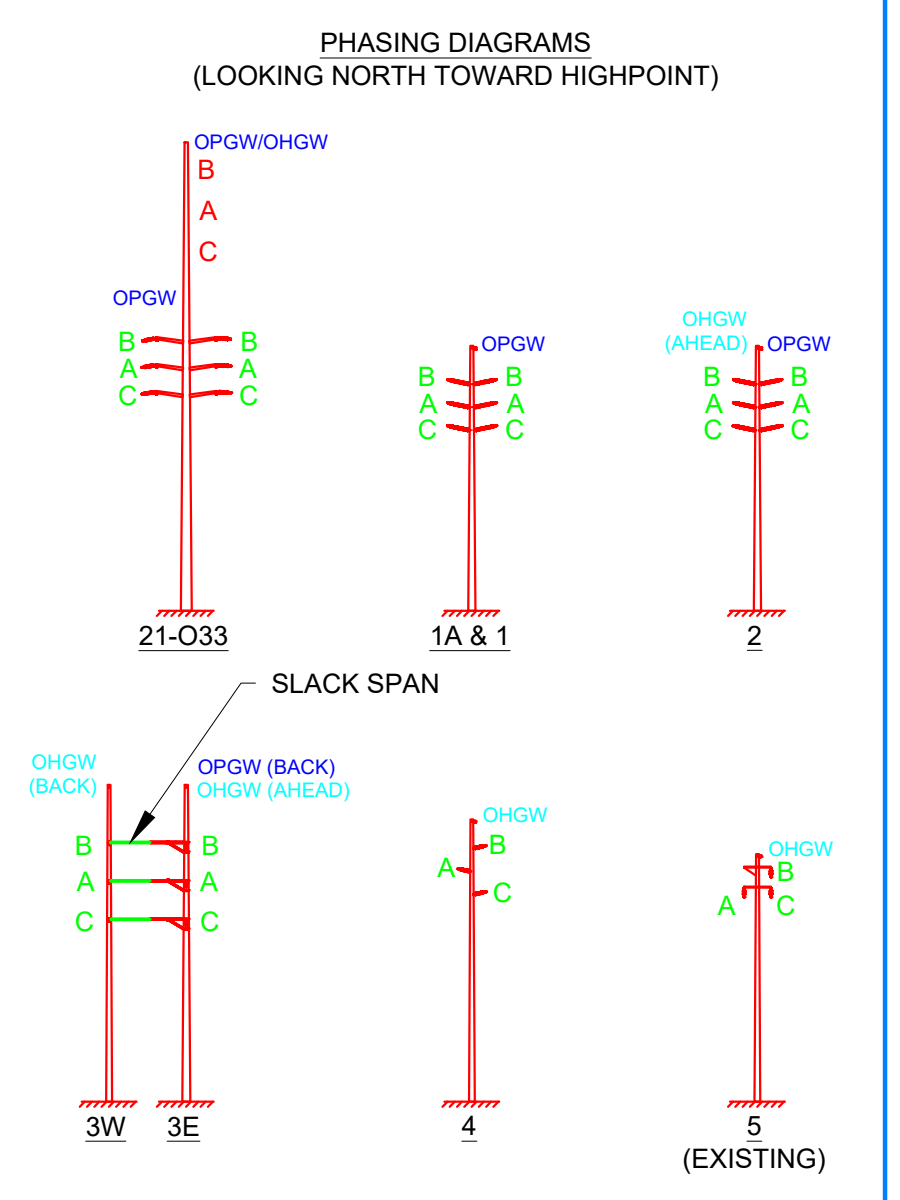
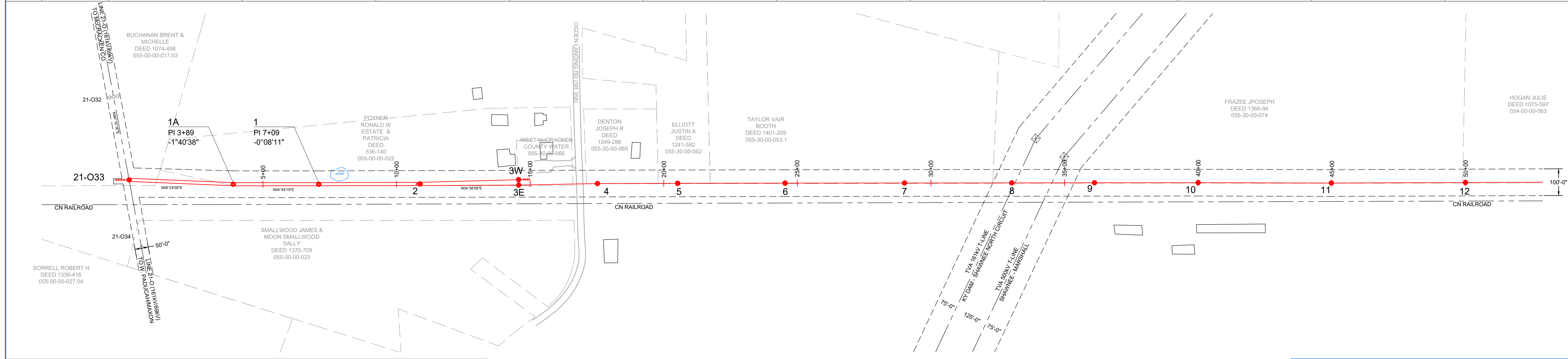
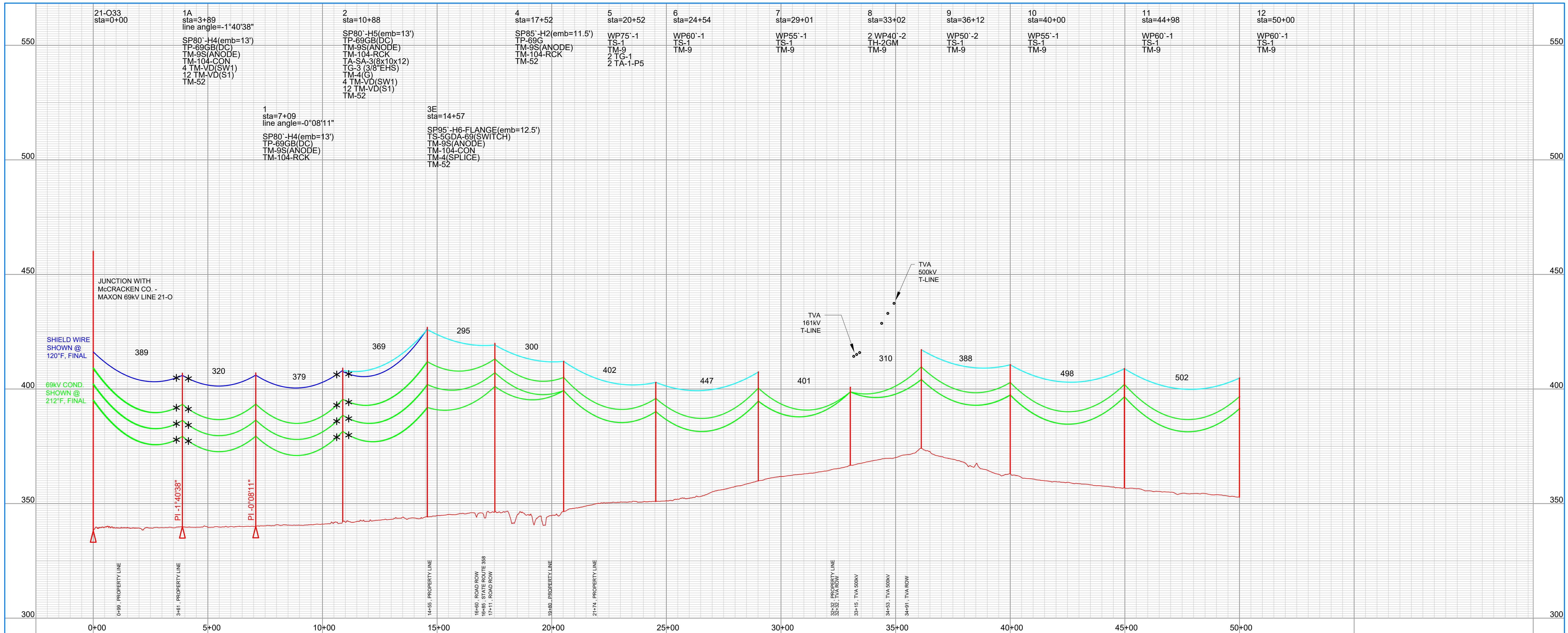
Sincerely,

/s/ Senthia Santana

Senthia Santana

Associate Attorney

senthia.santana@bigrivers.com



CABLE DATA (LOADING: HEAVY DISTRICT 1/2" ICE, 4LBS WIND @ 0°F)			
STR. 21-033 TO STR. 3E/3W	STR. 2 TO 3E)	STR. 3W TO STR. 5	
OHGW: 3/8" EHS 7-STRAND STEEL	R.S. = 368' D.T. = 2,250W @ NESC 250B, INITIAL	3,600# @ 250B, INITIAL	
OPGW: 48 FIBER, OD 0.602"	(STR. 21-033 TO 3E), R.S. = 364' D.T. = 4,500W @ NESC 250B, INITIAL		
69KV CONDUCTOR: 336 KCMIL 26/7 ACSF "LINNET"	(STR. 21-033 TO 3W), R.S. = 367' D.T. = 4,230W @ NESC 250B, INITIAL		
	(STR. 33 TO 3E), R.S. = 366' D.T. = 4,230W @ NESC 250B, INITIAL	5,050# @ 250B, INITIAL	

PRELIMINARY
 FOR BID
 FOR CONSTRUCTION
 FOR RECORD
 "AS BUILT"

- LEGEND**
- POLES
 - DOWN GUY
 - EXISTING POLE
 - EXISTING OH LINE
 - - - FENCE
 - - - EASEMENT
 - - - PROPERTY LINE
 - - - DITCH/STREAM
 - * VIBRATION DAMPER

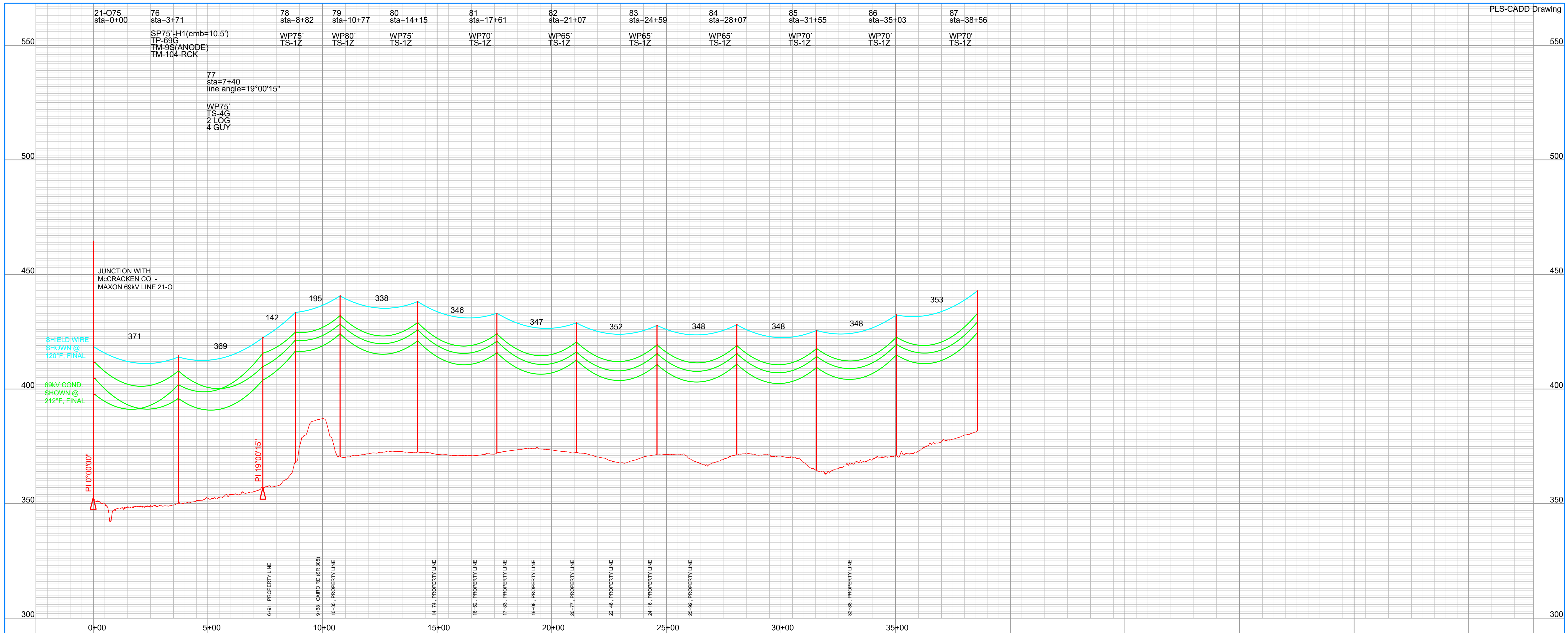


REV	DATE	DRFT	ENGR	REVISION DESCRIPTION
0	08/02/2022		ABG	ISSUED FOR CONSTRUCTION
1	09/06/2023		ABG	AS-BUILT

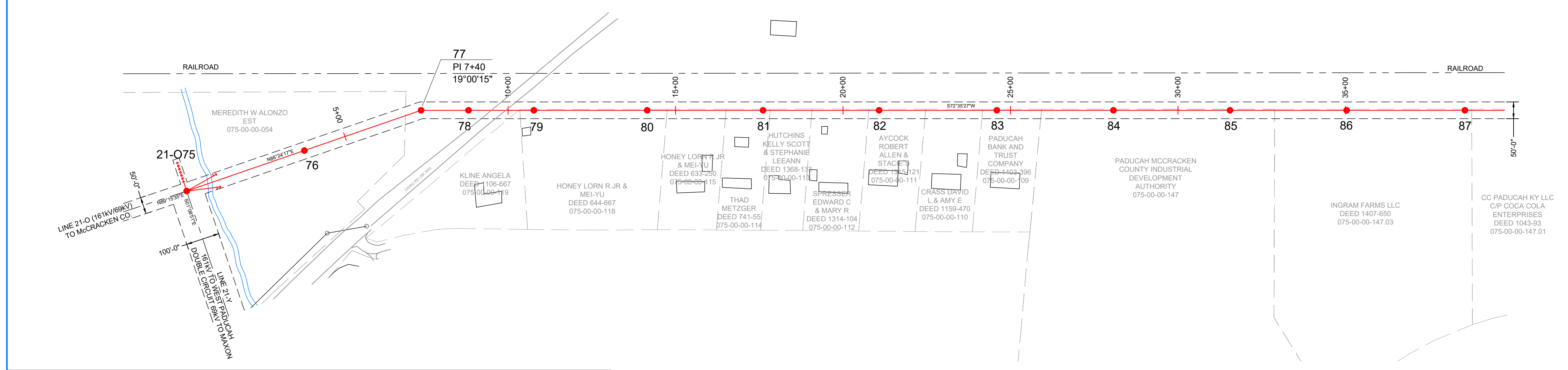
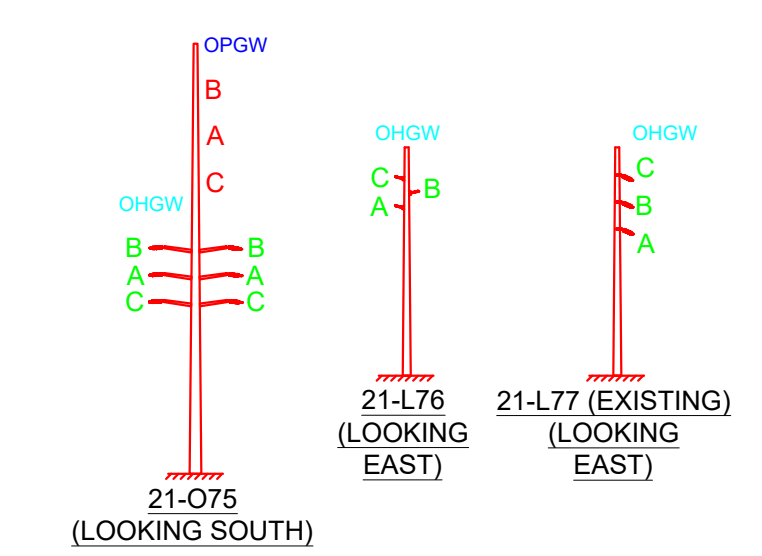
Big Rivers
ELECTRIC CORPORATION

HIGHPOINT TAP 69KV LINE 21 - J

W.O.	DRAWING REVIEW	DATE	21 - J
SCALE: 1" = 200' HORZ 1" = 20' VERT	ENGINEER	10/01/2021	
	DRAWN		SHEET 1



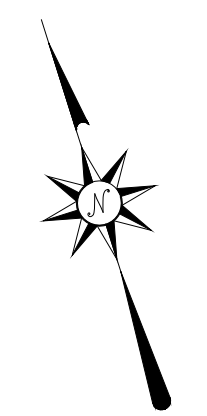
PHASING DIAGRAMS



CABLE DATA (LOADING: HEAVY DISTRICT 1/2" ICE, 4LBS WIND @ 0°F)

OHGW: 3/8" HS 7-STRAND STEEL	3,200# @ 250B, INITIAL			
69kV CONDUCTOR: 266 KCMIL 26/7 ACSR "PARTRIDGE"	3,800# @ 250B, INITIAL			

- PRELIMINARY
- FOR BID
- FOR CONSTRUCTION
- FOR RECORD
- "AS BUILT"



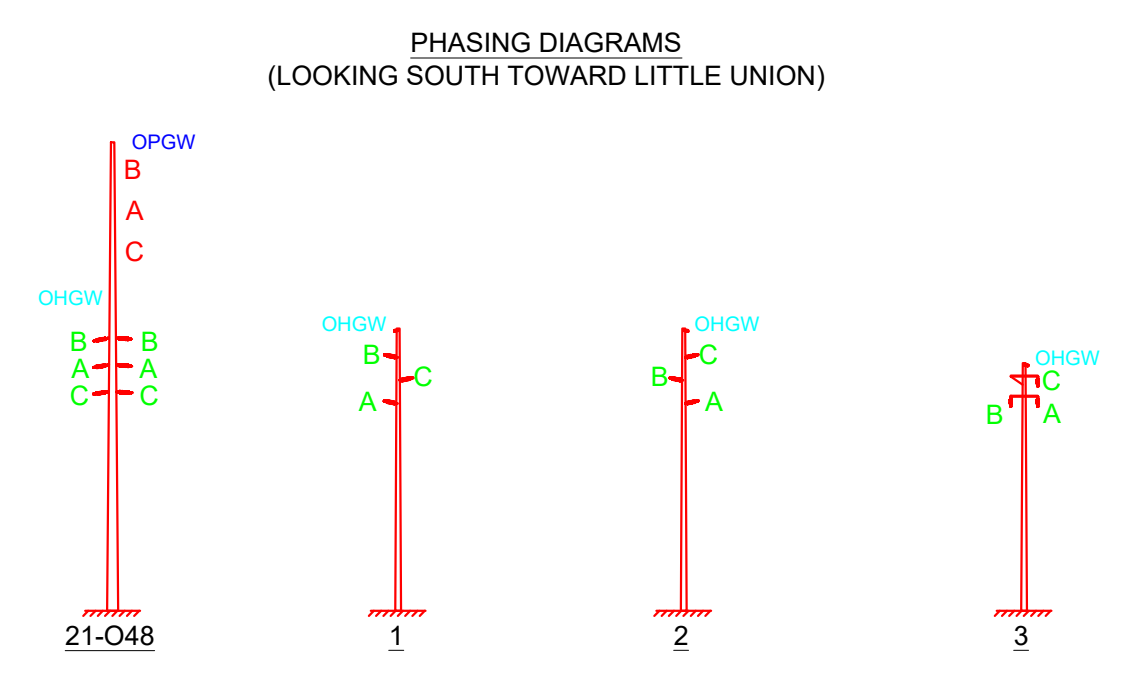
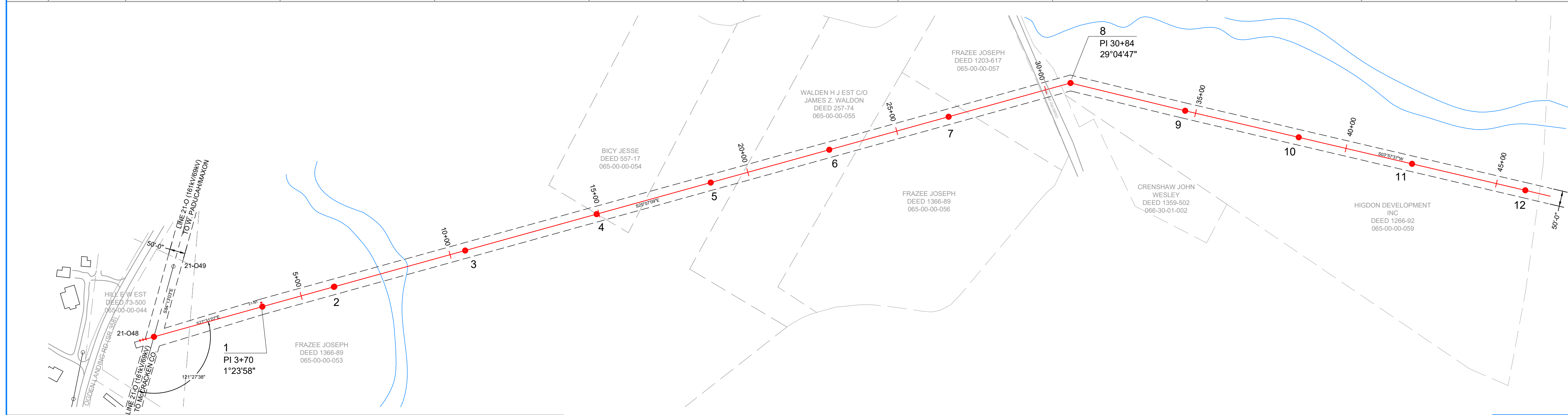
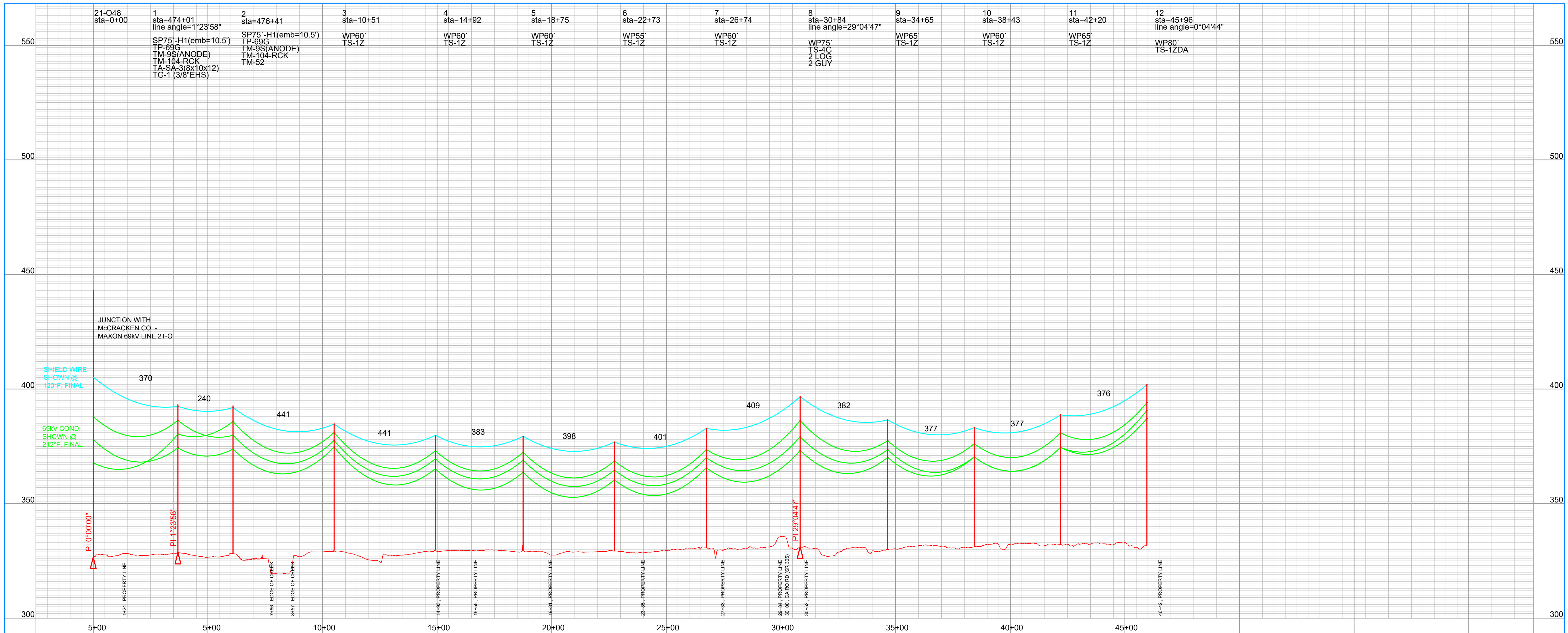
- LEGEND
- POLE
 - DOWN GUY
 - EXISTING POLE
 - EXISTING OH LINE
 - X- FENCE
 - - - EASEMENT
 - - - PROPERTY LINE
 - - - DITCH/STREAM
 - * VIBRATION DAMPER

REV	DATE	DRFT	ENGR	REVISION DESCRIPTION
0	08/02/2022		ABG	ISSUED FOR CONSTRUCTION
0	09/06/2023		ABG	AS-BUILT

Big Rivers
ELECTRIC CORPORATION

MAXON - COLMAN ROAD 69kV
LINE 21 - L

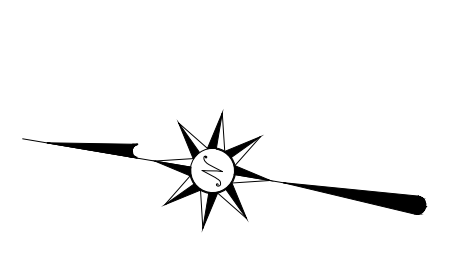
W.O.	DRAWING REVIEW	DATE	21 - L
SCALE: 1" = 200' HORZ 1" = 20' VERT	ENGINEER ABG (P&D ENGINEERS)	10/01/2021	
	DRAWN		SHEET 1



CABLE DATA (LOADING: HEAVY DISTRICT 1/2" ICE, 4LBS WIND @ 0'F)

OHGW: 3/8" HS 7-STRAND STEEL	3,400# @ NESC 250B, INITIAL			
69KV CONDUCTOR: 266 KCMIL 26/7 ACSR "PARTRIDGE"	4,000# @ NESC 250B, INITIAL			

- PRELIMINARY
- FOR BID
- FOR CONSTRUCTION
- FOR RECORD
- "AS BUILT"
-



- LEGEND
- POLE
 - DOWN GUY
 - EXISTING POLE
 - - - EXISTING OH LINE
 - - - FENCE
 - - - EASEMENT
 - - - PROPERTY LINE
 - - - DITCH/STREAM
 - * VIBRATION DAMPER

REV	DATE	DRFT	ENGR	REVISION DESCRIPTION
0	08/02/2022		ABG	ISSUED FOR CONSTRUCTION
1	09/06/2023		ABG	AS-BUILT

W.O.

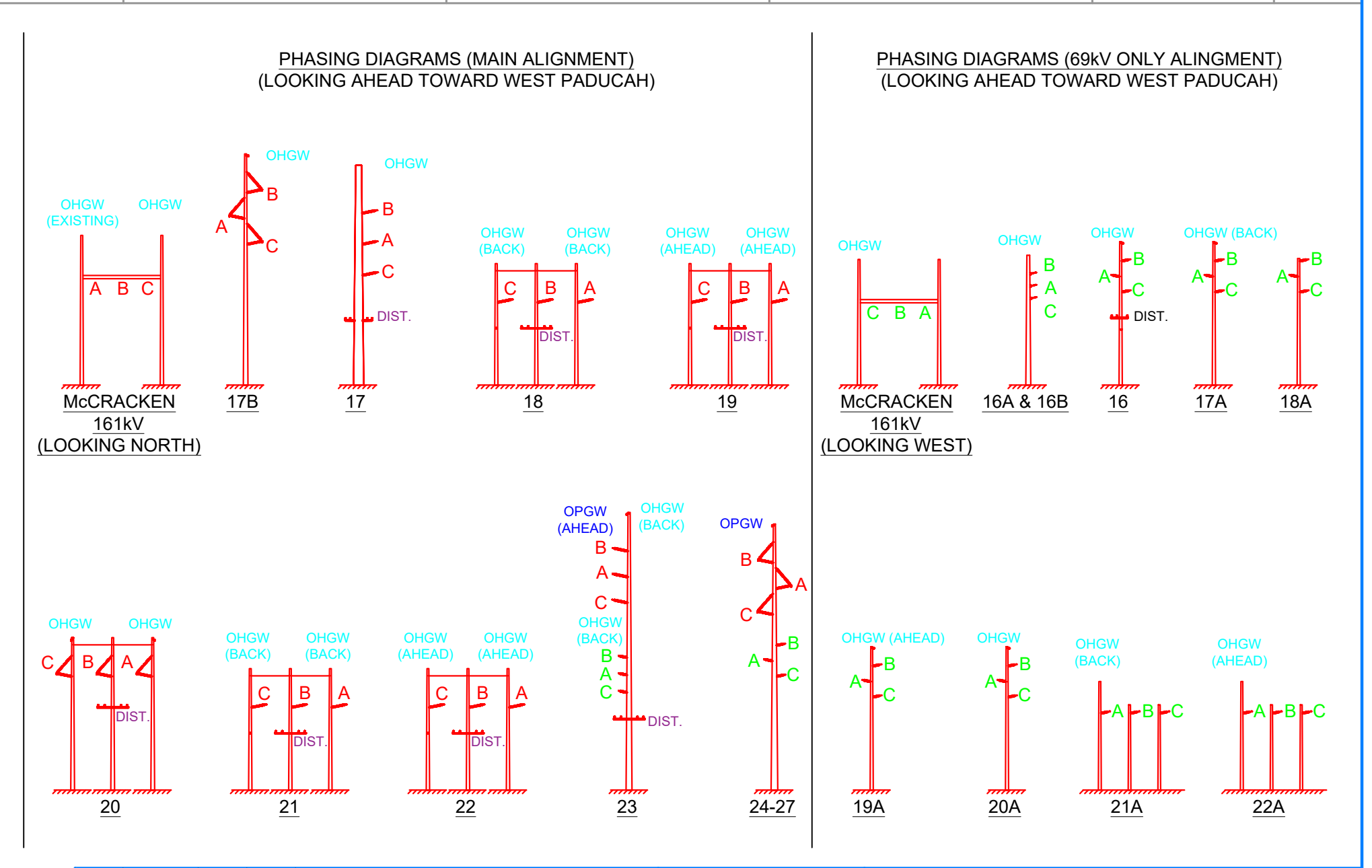
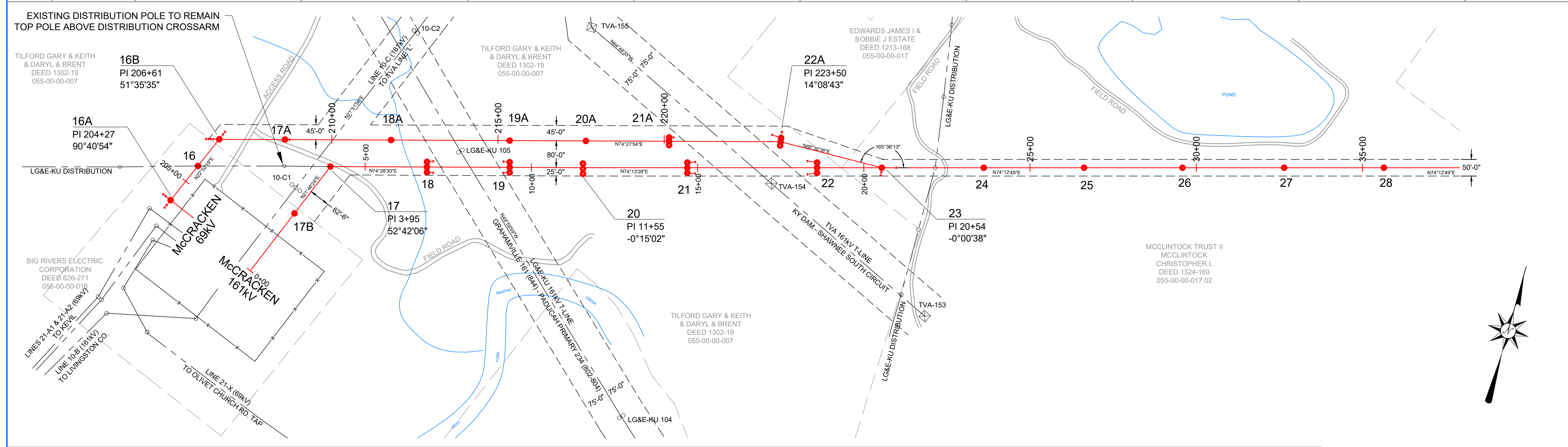
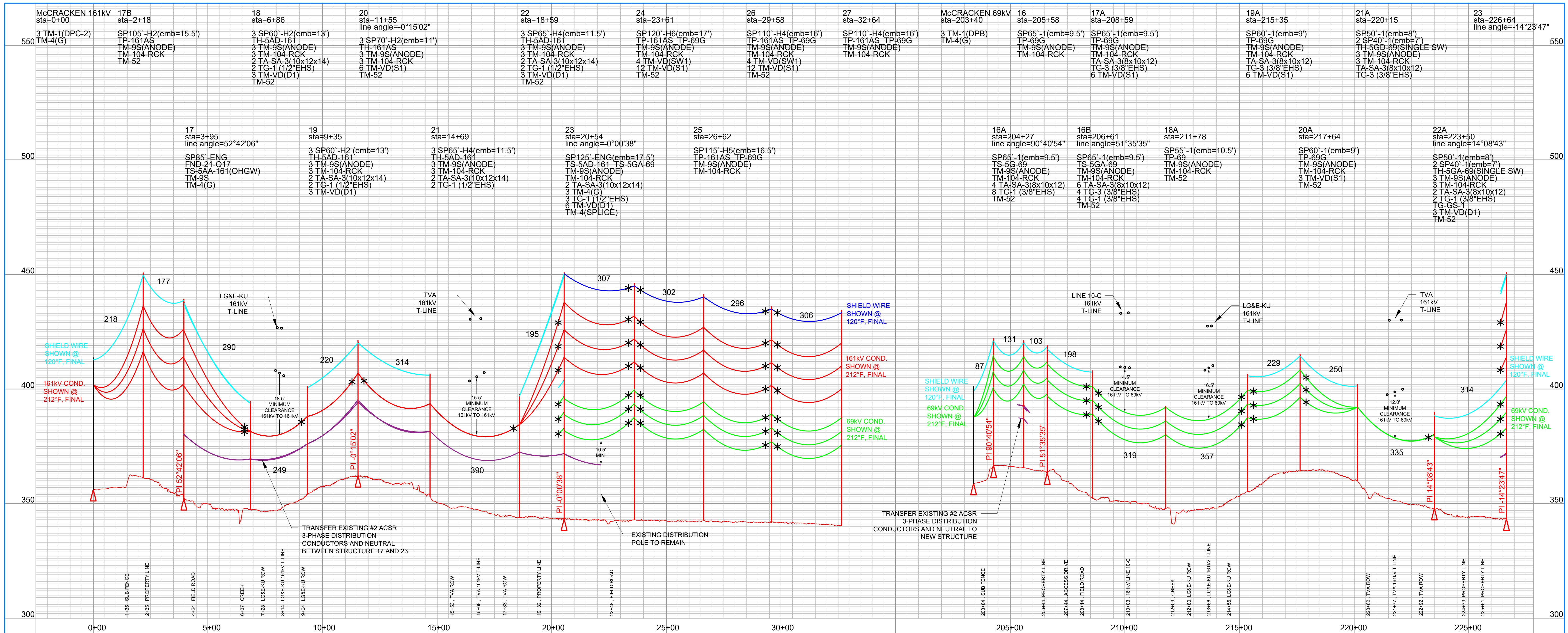
SCALE: 1" = 200' HORIZ
1" = 20' VERT

Big Rivers
ELECTRIC CORPORATION

LITTLE UNION TAP 69KV
LINE 21 - N

ENGINEER	DRAWING REVIEW	DATE	
ABG (P&D ENGINEERS)		10/01/2021	21 - N

SHEET 1



CABLE DATA (LOADING: HEAVY DISTRICT 1/2" ICE, 4LBS WIND @ 0°F)										
McCracken 161kV	STR. 17 TO STR. 18	STR. 18 TO STR. 19	STR. 19 TO STR. 21	STR. 21 TO STR. 22	STR. 22 TO STR. 23	STR. 16A TO STR. 16B	STR. 16B TO STR. 21A	STR. 21A TO STR. 22A	STR. 22A TO STR. 23	STR. 23 TO STR. 31
OHGW: 3/8" EHS 7-STRAND STEEL	R.S. = 199' D.T. = 1,000# @ NESC 250B, INITIAL	(2X) R.S. = 286' D.T. = 2,250# @ NESC 250B, INITIAL	(2X) R.S. = 278' D.T. = 3,000# @ NESC 250B, INITIAL	(2X) R.S. = 188' D.T. = 2,800# @ NESC 250B, INITIAL	R.S. = 65' D.T. = 750# @ NESC 250B, INITIAL	R.S. = 119' D.T. = 4,230# @ NESC 250B, INITIAL	(STR. 16B TO 17A & 19A TO 21A) D.T. = 2,250# @ NESC 250B, INITIAL	R.S. = 315' D.T. = 2,250# @ NESC 250B, INITIAL	R.S. = 305' D.T. = 4,500# @ NESC 250B, INITIAL	R.S. = 305' D.T. = 7,875# @ NESC 250B, INITIAL
OPGW: 48 FIBER, OD 0.602"										
161kV CONDUCTOR: 795 KCMIL 26/7 ACSR "DRAKE"	R.S. = 199' D.T. = 1,400# @ NESC 250B, INITIAL	R.S. = 287' D.T. = 7,875# @ NESC 250B, INITIAL	R.S. = 248' D.T. = 7,875# @ NESC 250B, INITIAL	R.S. = 278' D.T. = 7,875# @ NESC 250B, INITIAL	R.S. = 389' D.T. = 7,875# @ NESC 250B, INITIAL	R.S. = 190' D.T. = 4,230# @ NESC 250B, INITIAL				
69kV CONDUCTOR: 336 KCMIL 26/7 ACSR "LINNET"					R.S. = 82' D.T. = 1,000# @ NESC 250B, INITIAL	R.S. = 119' D.T. = 1,000# @ NESC 250B, INITIAL	R.S. = 289' D.T. = 4,230# @ NESC 250B, INITIAL	R.S. = 335' D.T. = 4,230# @ NESC 250B, INITIAL	R.S. = 313' D.T. = 4,230# @ NESC 250B, INITIAL	R.S. = 305' D.T. = 4,230# @ NESC 250B, INITIAL

LEGEND

- POLE
- DOWN GUY
- EXISTING POLE
- EXISTING OH LINE
- - - FENCE
- - - EASEMENT
- - - PROPERTY LINE
- - - DITCH/STREAM
- * VIBRATION DAMPER

REV	DATE	DRFT	ENGR	REVISION DESCRIPTION
0	08/02/2022		ABG	ISSUED FOR CONSTRUCTION
1	09/06/2023		ABG	AS-BUILT

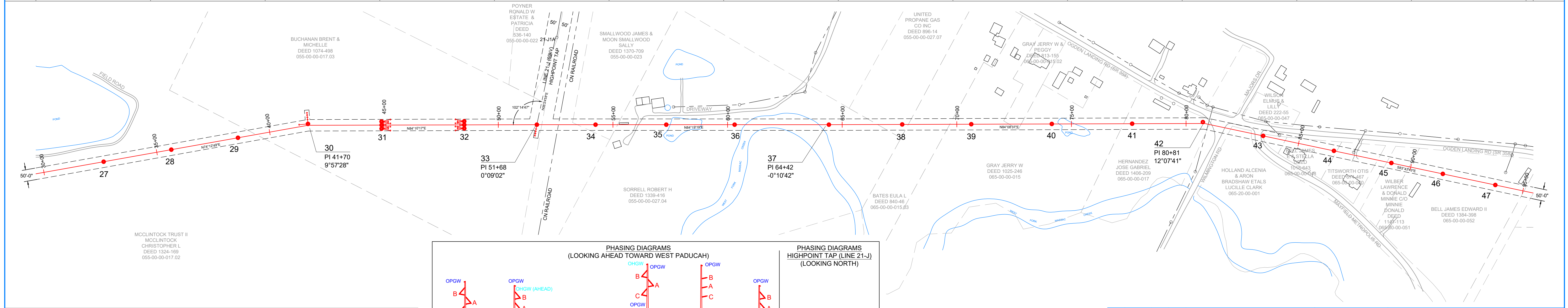
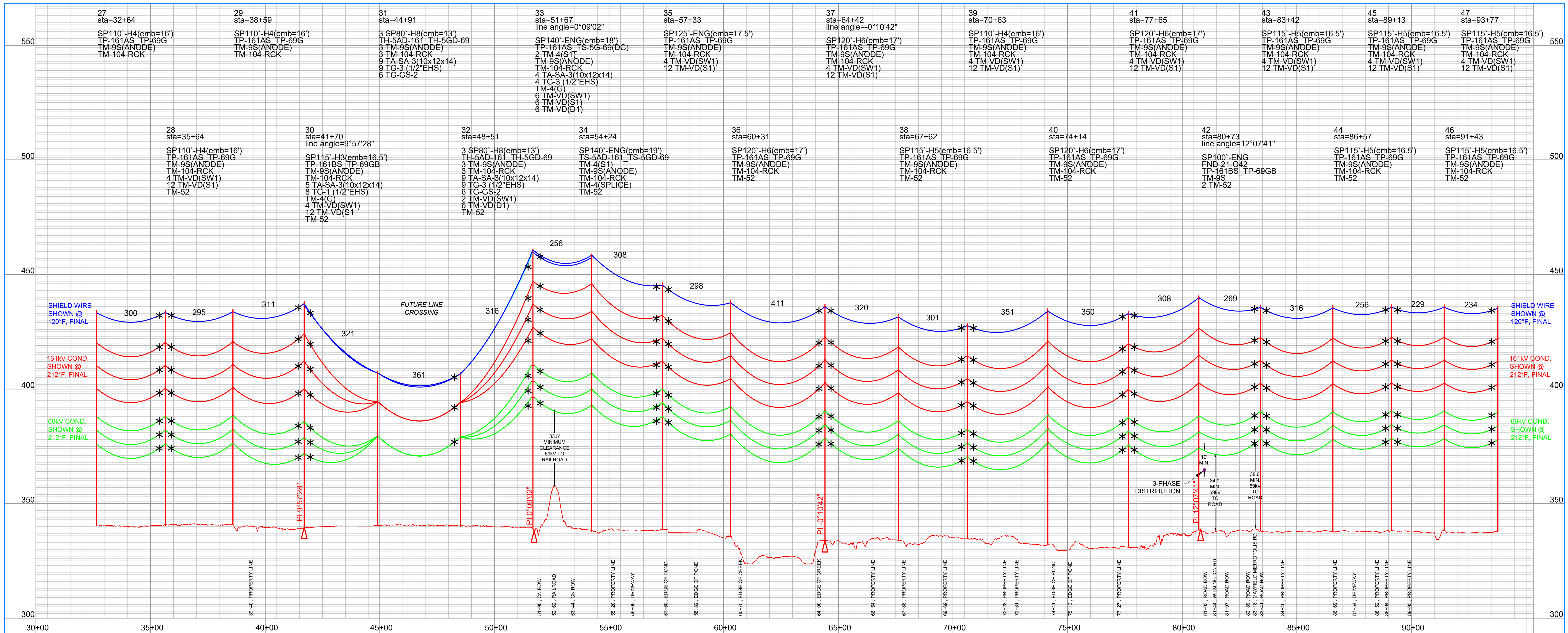
W.O. _____ DATE _____

SCALE: 1" = 200' HORZ
1" = 20' VERT

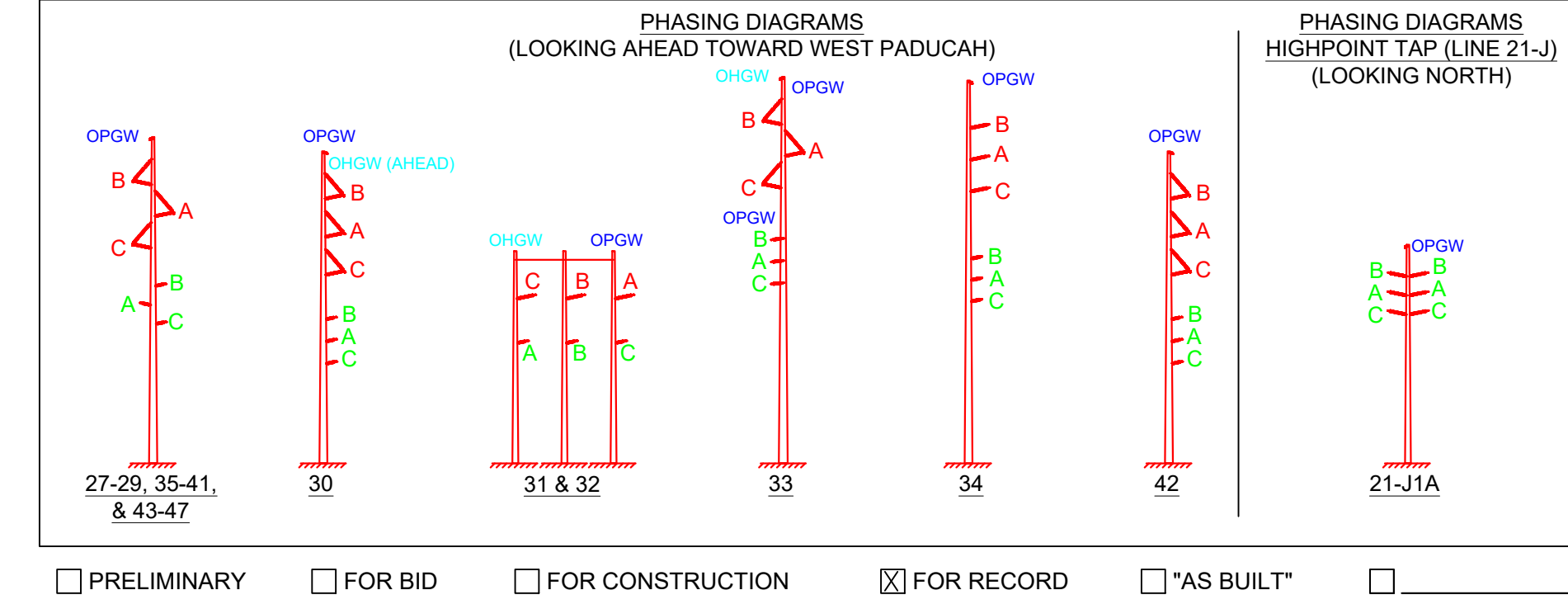
DRAWING REVIEW: _____ DATE _____

ENGINEER: _____ ABG (P&D ENGINEERS)

DRAWN: _____



CABLE DATA (LOADING: HEAVY DISTRICT 1/2" ICE, 4 LBS WIND @ 0°F)				
STR. 23 TO STR. 31	STR. 31 TO STR. 32	STR. 32 TO STR. 33	STR. 33 TO STR. 34	STR. 34 TO STR. 48
OHGW: 3/8" EHS 7-STRAND STEEL R.S. = 319' D.T. = 3,000# @ NESC 250B, INITIAL	R.S. = 360' D.T. = 3,000# @ NESC 250B, INITIAL	R.S. = 317' D.T. = 3,000# @ NESC 250B, INITIAL	(2X) R.S. = 190' D.T. = 3,000# @ NESC 250B, INITIAL	R.S. = 324' D.T. = 4,500# @ NESC 250B, INITIAL
OPGW: 48 FIBER, OD 0.602"	R.S. = 305' D.T. = 4,500# @ NESC 250B, INITIAL	R.S. = 317' D.T. = 4,500# @ NESC 250B, INITIAL	R.S. = 278' D.T. = 7,875# @ NESC 250B, INITIAL	R.S. = 312' D.T. = 4,230# @ NESC 250B, INITIAL
161KV CONDUCTOR: 795 KCMIL 26/7 ACSR "DRAKE"	R.S. = 305' D.T. = 4,230# @ NESC 250B, INITIAL	R.S. = 360' D.T. = 7,875# @ NESC 250B, INITIAL	R.S. = 312' D.T. = 4,230# @ NESC 250B, INITIAL	R.S. = 324' D.T. = 4,230# @ NESC 250B, INITIAL
69KV CONDUCTOR: 336 KCMIL 26/7 ACSR "LINNET"	R.S. = 305' D.T. = 4,230# @ NESC 250B, INITIAL	R.S. = 360' D.T. = 4,230# @ NESC 250B, INITIAL	R.S. = 312' D.T. = 4,230# @ NESC 250B, INITIAL	R.S. = 324' D.T. = 4,230# @ NESC 250B, INITIAL



LEGEND

- POLE
- DOWN GUY
- EXISTING POLE
- EXISTING OH LINE
- FENCE
- EASEMENT
- PROPERTY LINE
- DITCH/STREAM
- * VIBRATION DAMPER

REV	DATE	DRFT	ENGR	REVISION DESCRIPTION
0	08/02/2022		ABG	ISSUED FOR CONSTRUCTION
1	09/06/2023		ABG	AS-BUILT

W.O. _____

SCALE: 1" = 200' HORIZ
1" = 20' VERT

ENGINEER: _____ DATE: 10/01/2021

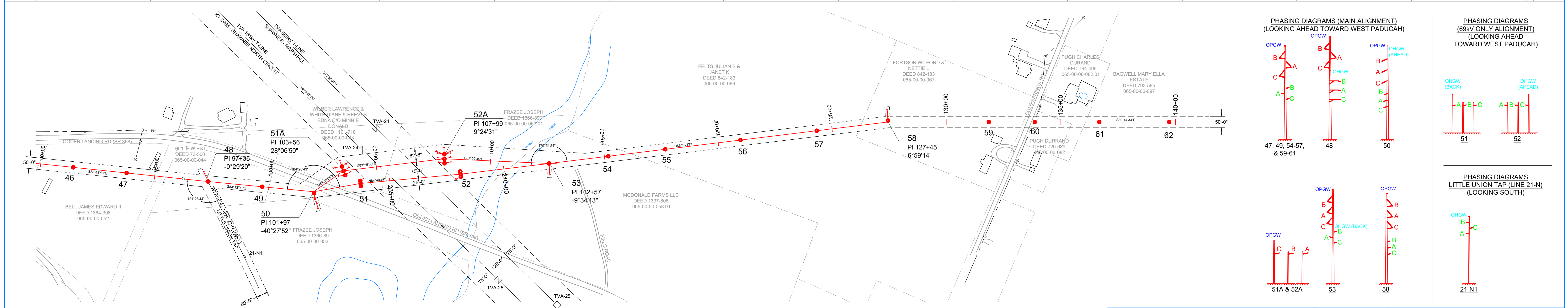
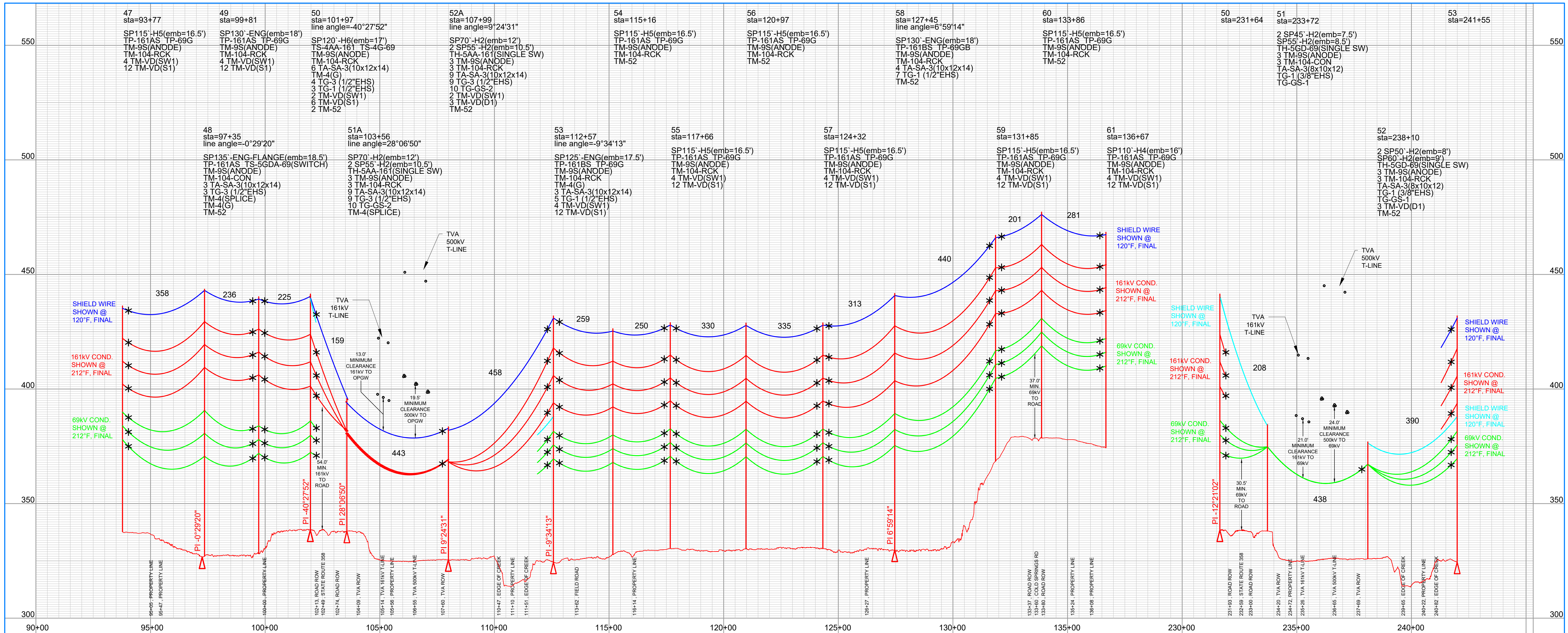
DRAWING REVIEW: _____

DRAWN: _____

McCRACKEN CO. - WEST PADUCAH 161KV
McCRACKEN CO. - MAXON 69KV
LINE 21 - O

21 - O

SHEET 2 of 4



CABLE DATA (LOADING: HEAVY DISTRICT 1/2" ICE, 4LBS WIND @ 0°F)

STR. 34 TO STR. 48	STR. 48 TO STR. 51/51A	STR. 51A TO STR. 52A	STR. 51 TO STR. 52	STR. 52/52A TO STR. 75
OHGW: 3/8" EHS 7-STRAND STEEL	(STR. 50 TO 51), R.S. = 199' D.T. = 1,500# @ NESC 250B, INITIAL	R.S. = 449' D.T. = 4,500# @ NESC 250B, INITIAL	(STR. 52 TO STR. 53), R.S. = 389' D.T. = 2,250# @ NESC 250B, INITIAL	(STR. 52 TO STR. 53), R.S. = 345' D.T. = 4,500# @ NESC 250B, INITIAL
OPGW: 48 FIBER, OD 0.602"	R.S. = 324' D.T. = 4,500# @ NESC 250B, INITIAL	(STR. 48 TO 51A), R.S. = 219' D.T. = 4,500# @ NESC 250B, INITIAL	R.S. = 442' D.T. = 7,875# @ NESC 250B, INITIAL	(STR. 52A TO STR. 75), R.S. = 345' D.T. = 7,875# @ NESC 250B, INITIAL
161KV CONDUCTOR: 795 KCMIL 26/7 ACSR "DRAKE"	(STR. 34 TO 51A), R.S. = 312' D.T. = 7,875# @ NESC 250B, INITIAL	R.S. = 442' D.T. = 7,875# @ NESC 250B, INITIAL	(STR. 52 TO STR. 75), R.S. = 345' D.T. = 4,230# @ NESC 250B, INITIAL	(STR. 52 TO STR. 75), R.S. = 345' D.T. = 4,230# @ NESC 250B, INITIAL
69KV CONDUCTOR: 336 KCMIL 26/7 ACSR "LINNET"	R.S. = 324' D.T. = 4,230# @ NESC 250B, INITIAL	(STR. 48 TO 51), R.S. = 228' D.T. = 4,230# @ NESC 250B, INITIAL	R.S. = 437' D.T. = 4,230# @ NESC 250B, INITIAL	(STR. 52 TO STR. 75), R.S. = 339' D.T. = 4,230# @ NESC 250B, INITIAL

LEGEND

- POLE
- DOWN GUY
- EXISTING POLE
- - - EXISTING OH LINE
- - - FENCE
- - - EASEMENT
- - - PROPERTY LINE
- - - DITCH/STREAM
- * VIBRATION DAMPER

PHASING DIAGRAMS (MAIN ALIGNMENT) (LOOKING AHEAD TOWARD WEST PADUCAH)

PHASING DIAGRAMS (69KV ONLY ALIGNMENT) (LOOKING AHEAD TOWARD WEST PADUCAH)

PHASING DIAGRAMS (LOOKING AHEAD TOWARD WEST PADUCAH)

PHASING DIAGRAMS (LOOKING SOUTH)

PHASING DIAGRAMS (LOOKING SOUTH)

PHASING DIAGRAMS (LOOKING SOUTH)

REVISIONS

REV	DATE	DRFT	ENGR	REVISION DESCRIPTION
0	08/02/2022	ABG		ISSUED FOR CONSTRUCTION
1	02/14/2023	ABG		SHIFT OF STR. 21-051 DUE TO UG UTILITIES
2	09/06/2023	ABG		AS-BUILT

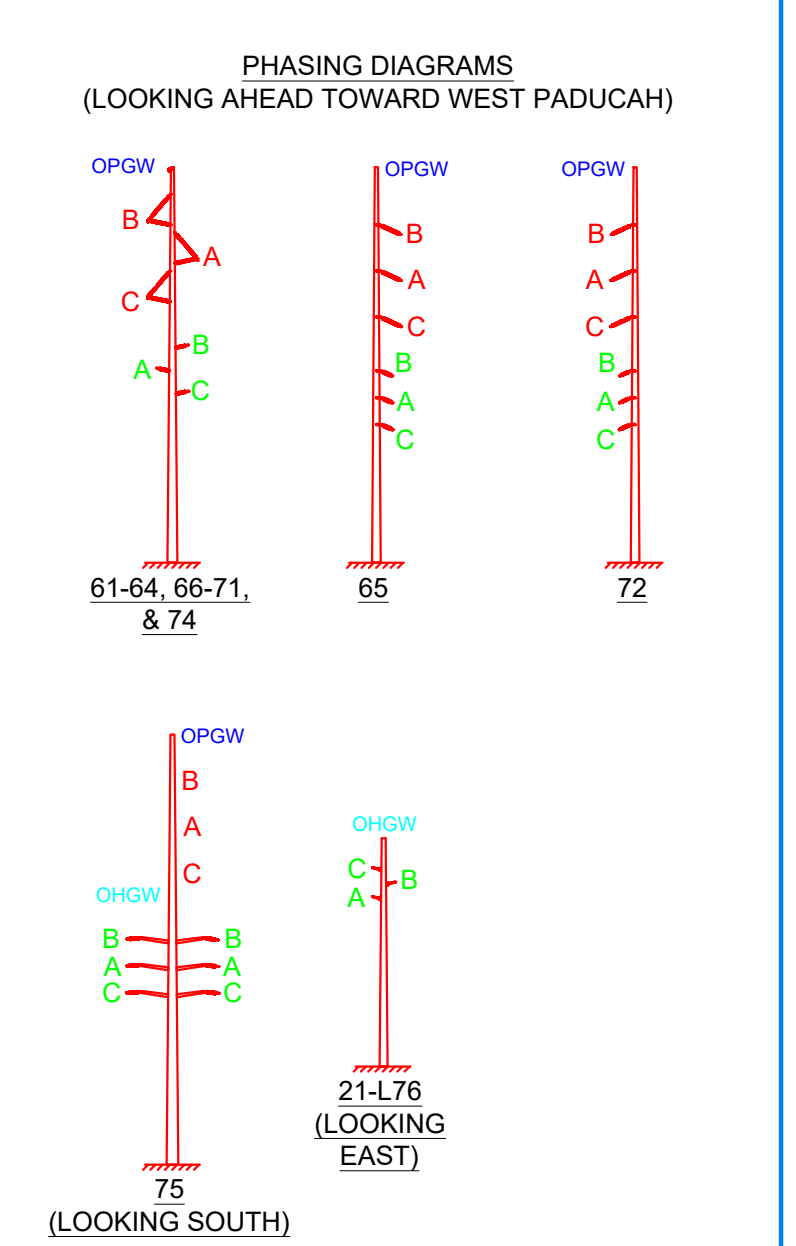
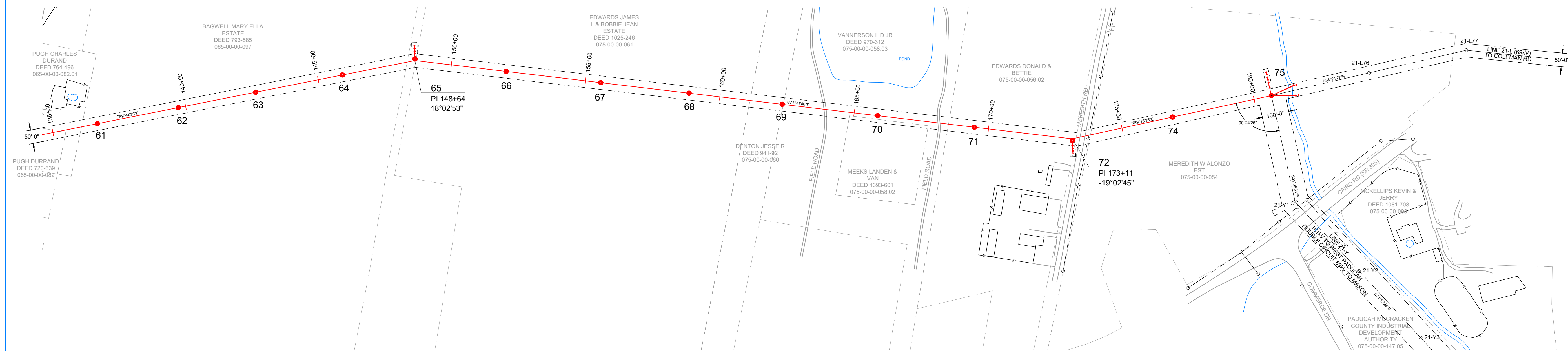
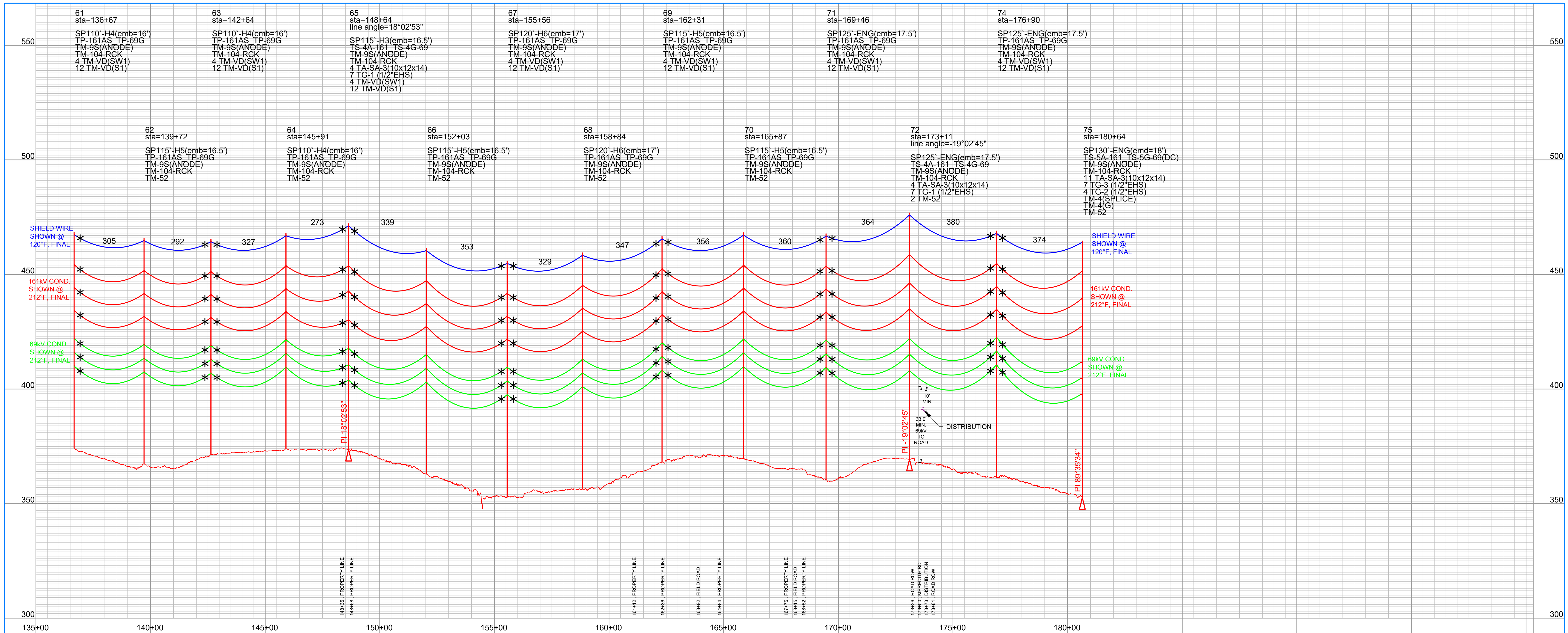
Big Rivers ELECTRIC CORPORATION

McCRACKEN CO. - WEST PADUCAH 161KV
McCRACKEN CO. - MAXON 69KV
LINE 21 - O

W.O. SCALE: 1" = 200' HORZ
1" = 20' VERT

DRAWING REVIEW: 10/01/2021
ENGINEER: ABG (P&D ENGINEERS)
DRAWN: []

21 - O
SHEET 3 of 4



CABLE DATA (LOADING: HEAVY DISTRICT 1/2" ICE, 4LBS WIND @ 0°F)

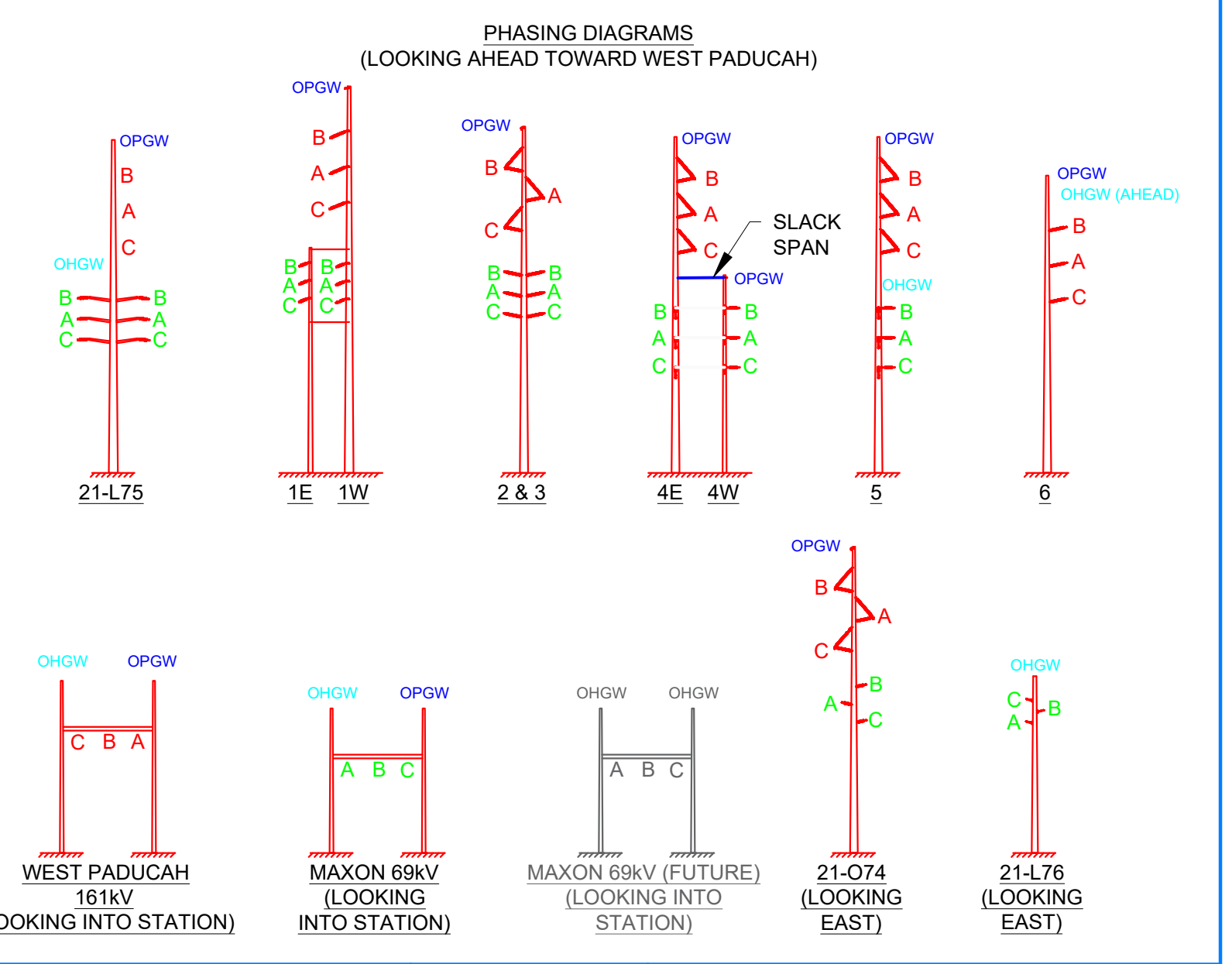
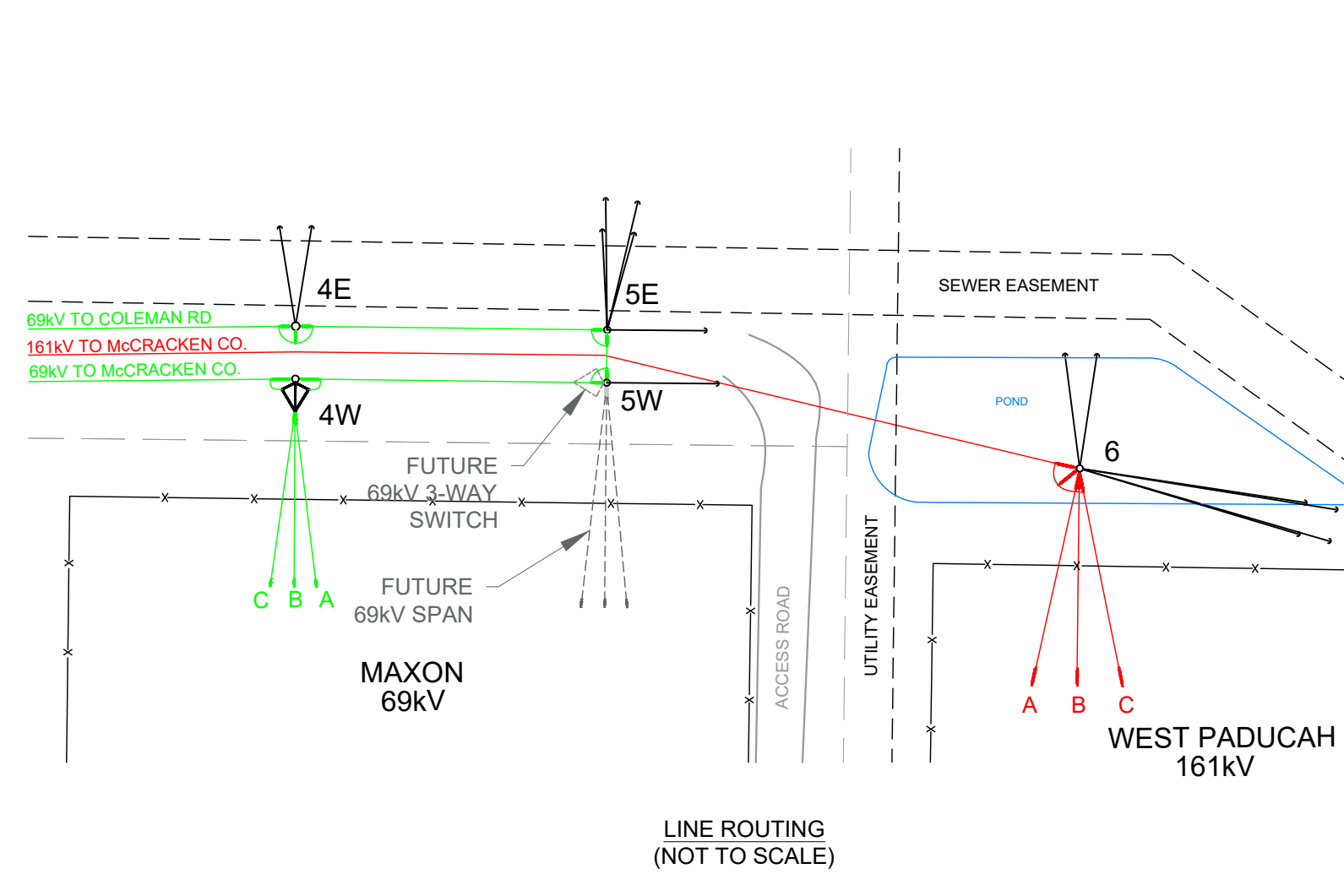
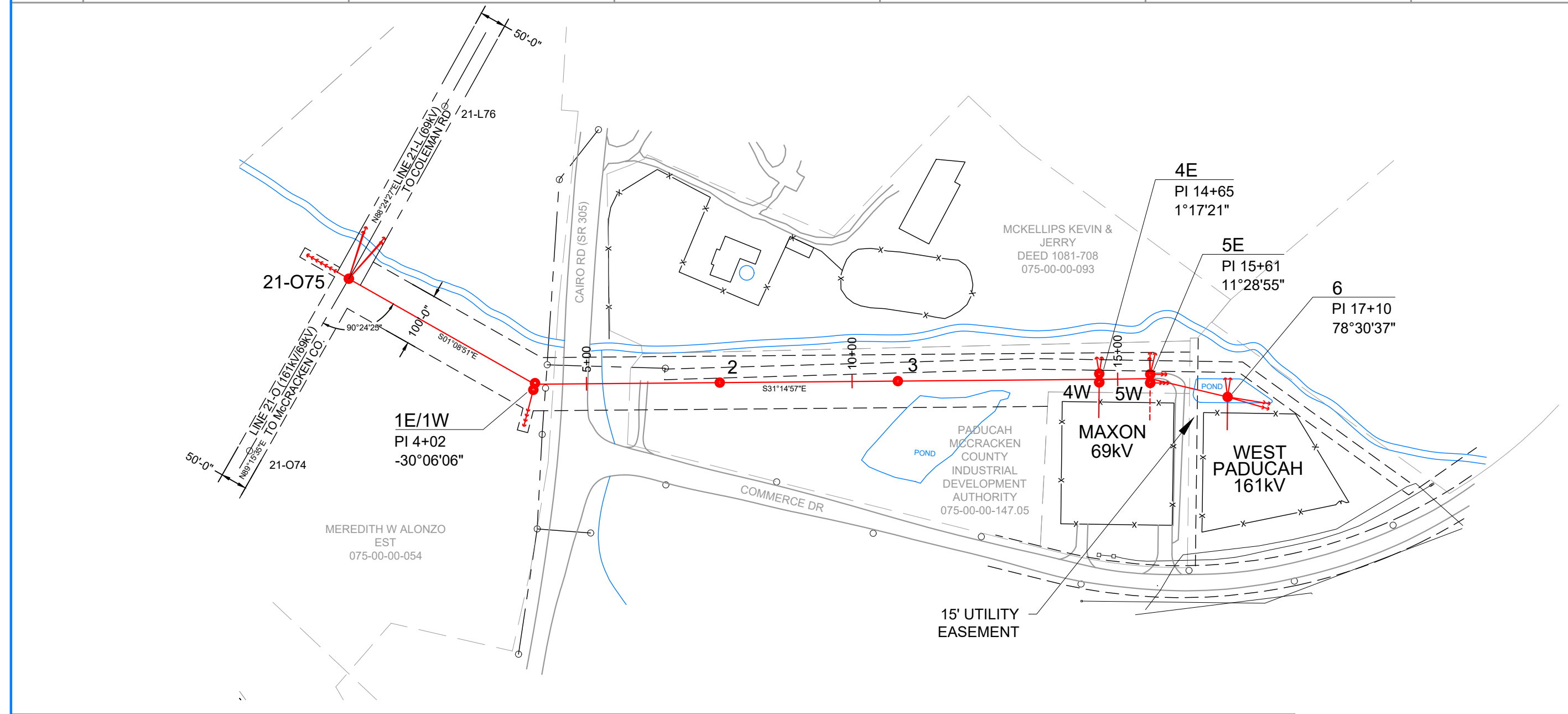
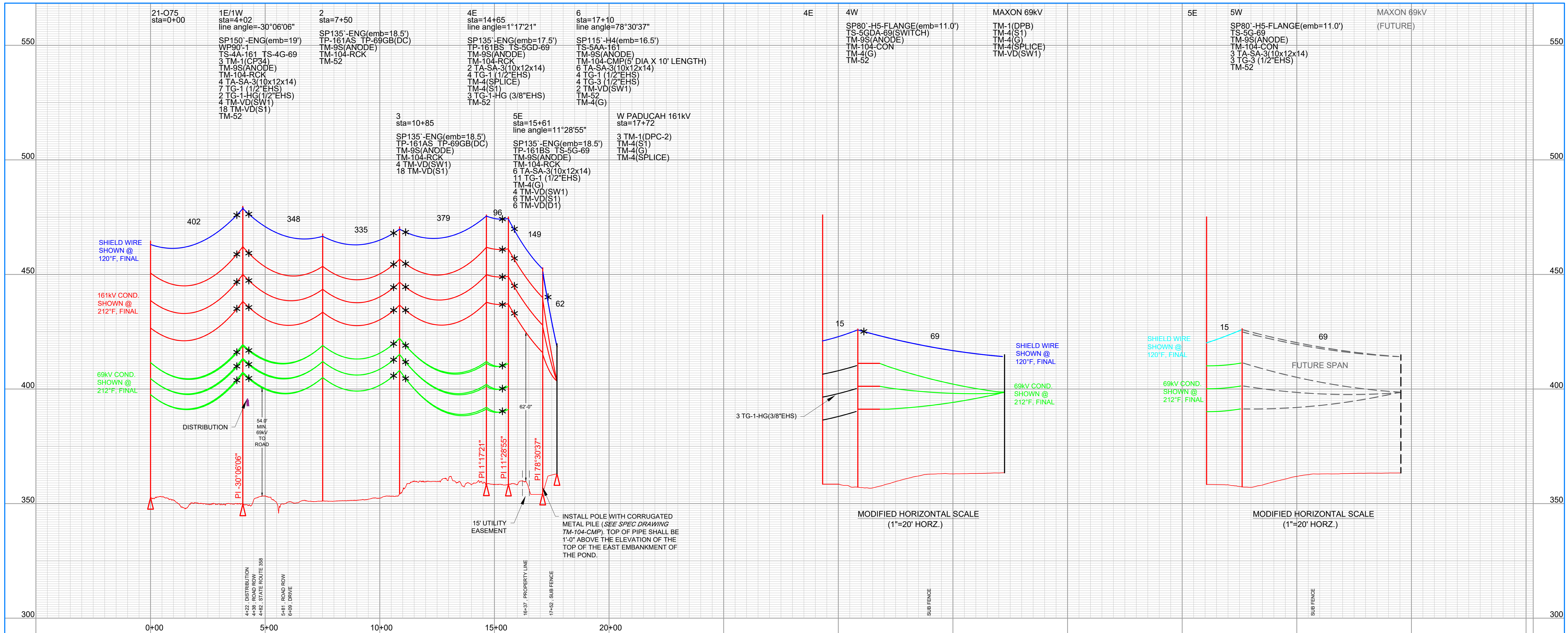
CONDUCTOR	SPACING	WINDING	WINDING
OHGW: 3/8" EHS 7-STRAND STEEL	(STR. 52 TO STR. 53), R.S. = 389' D.T. = 2,250W @ NESC 250B, INITIAL		
OPGW: 48 FIBER, OD 0.602"	(STR. 52A TO STR. 75), R.S. = 345' D.T. = 4,500W @ NESC 250B, INITIAL		
161KV CONDUCTOR: 795 KCMIL 26/7 ACSR "DRAKE"	(STR. 52A TO STR. 75), R.S. = 345' D.T. = 7,875W @ NESC 250B, INITIAL		
69KV CONDUCTOR: 336 KCMIL 26/7 ACSR "LINNET"	(STR. 52 TO STR. 75), R.S. = 339' D.T. = 4,230W @ NESC 250B, INITIAL		

- PRELIMINARY
- FOR BID
- FOR CONSTRUCTION
- FOR RECORD
- "AS BUILT"

- LEGEND
- POLE
 - DOWN GUY
 - EXISTING POLE
 - EXISTING OH LINE
 - - - FENCE
 - - - EASEMENT
 - - - PROPERTY LINE
 - - - DITCH/STREAM
 - *

REV	DATE	DRFT	ENGR	REVISION DESCRIPTION
0	08/02/2022		ABG	ISSUED FOR CONSTRUCTION
1	09/06/2023		ABG	AS-BUILT

McCracken Co. - West Paducah 161kV
 McCracken Co. - Maxon 69kV
 LINE 21 - O



CABLE DATA (LOADING: HEAVY DISTRICT 1/2" ICE, 4LBS WIND @ 0°F)					
STR. 21-075 TO STR. 4E/4W	STR. 4E/4W TO STR. 5E/5W	STR. 5 TO STR. 6	STR. 6 TO WEST PADUCAH 161KV	STR. 4W TO STR. 4E	STR. 4E TO MAXON 69KV
OHGW: 3/8" EHS 7-STRAND STEEL			D.T. = 1,500# @ NESC 250B, INITIAL	SLACK SPAN	SLACK SPAN
OPGW: 48 FIBER, OD 0.602"	R.S. = 129' D.T. = 4,500# @ NESC 250B, INITIAL	R.S. = 62' D.T. = 1,500# @ NESC 250B, INITIAL	R.S. = 62' D.T. = 1,500# @ NESC 250B, INITIAL	R.S. = 63' D.T. = 750# @ NESC 250B, INITIAL	R.S. = 63' D.T. = 750# @ NESC 250B, INITIAL
161KV CONDUCTOR: 795 KCMIL 26/7 ACSR "DRAKE"	R.S. = 346' D.T. = 7,875# @ NESC 250B, INITIAL	R.S. = 62' D.T. = 2,000# @ NESC 250B, INITIAL	R.S. = 62' D.T. = 2,000# @ NESC 250B, INITIAL	R.S. = 54' D.T. = 1,000# @ NESC 250B, INITIAL	R.S. = 54' D.T. = 1,000# @ NESC 250B, INITIAL
69KV CONDUCTOR: 336 KCMIL 26/7 ACSR "LINNET"					

PRELIMINARY FOR BID FOR CONSTRUCTION
 FOR RECORD "AS BUILT" _____

LEGEND
 ● POLE
 ○ DOWN GUY
 ○ EXISTING POLE
 --- EXISTING OH LINE
 --- FENCE
 --- EASEMENT
 --- PROPERTY LINE
 --- DITCH/STREAM
 * VIBRATION DAMPER

REV	DATE	DRFT	ENGR	REVISION DESCRIPTION
0	08/02/2022		ABG	ISSUED FOR CONSTRUCTION
1	09/06/2023		ABG	AS-BUILT

Big Rivers
 ELECTRIC CORPORATION

McCracken Co. - WEST PADUCAH 161KV
 McCracken Co. - MAXON 69KV
 LINE 21 - Y

W.O. _____
 SCALE: 1" = 200' HORZ
 1" = 20' VERT

DRAWING REVIEW: _____ DATE: 10/01/2021
 ENGINEER: ABG (P&D ENGINEERS)
 DRAWN: _____

21 - Y
 SHEET 1 of 1