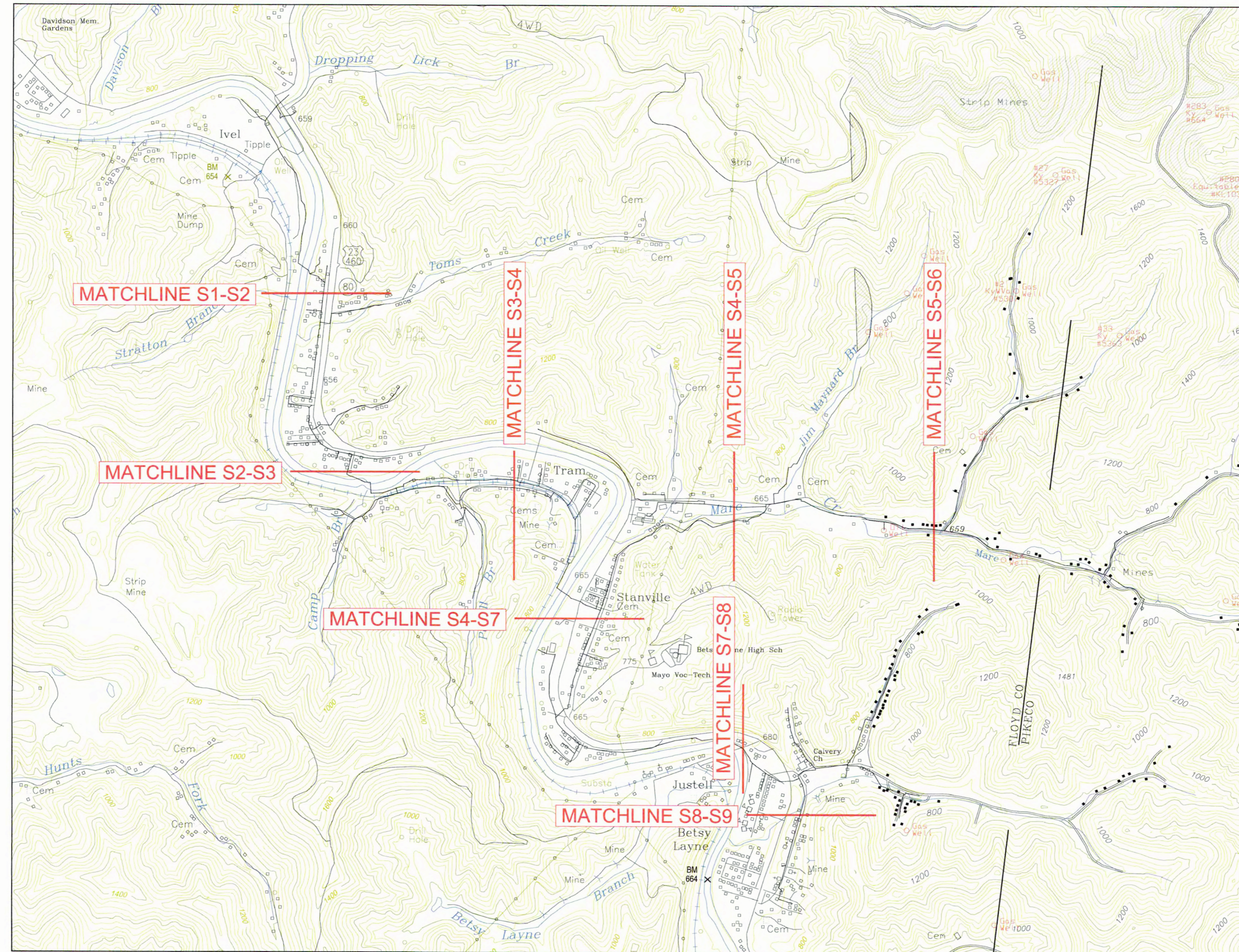


Project:  
**B & H GAS**  
**PIPELINE LOCATIONS**  
 FLOYD COUNTY, KENTUCKY



BUD RIFE  
 B & H GAS  
 FLOYD COUNTY

JOB NAME

SHEET TITLE

TITLE SHEET

Atchemy Engineering Associates, Inc.  
 MINING & CIVIL ENGINEERING CONSULTANTS  
 H<sub>2</sub>O LABORATORIES

516 West Old Middlebrook Road  
 Potosi, Missouri 63450  
 Phone: (636) 886-8889 Fax: 866-8847



JOB NO. BUD RTE  
 DATE: 02-13-2020  
 PRODUCED BY: RS  
 NOTES:

SHEET No.

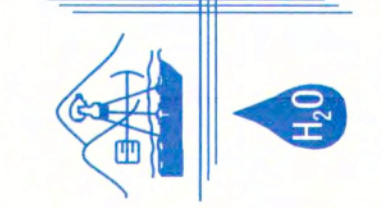


BUD RIFE  
B & H GAS  
FLOYD COUNTY

JOB NAME

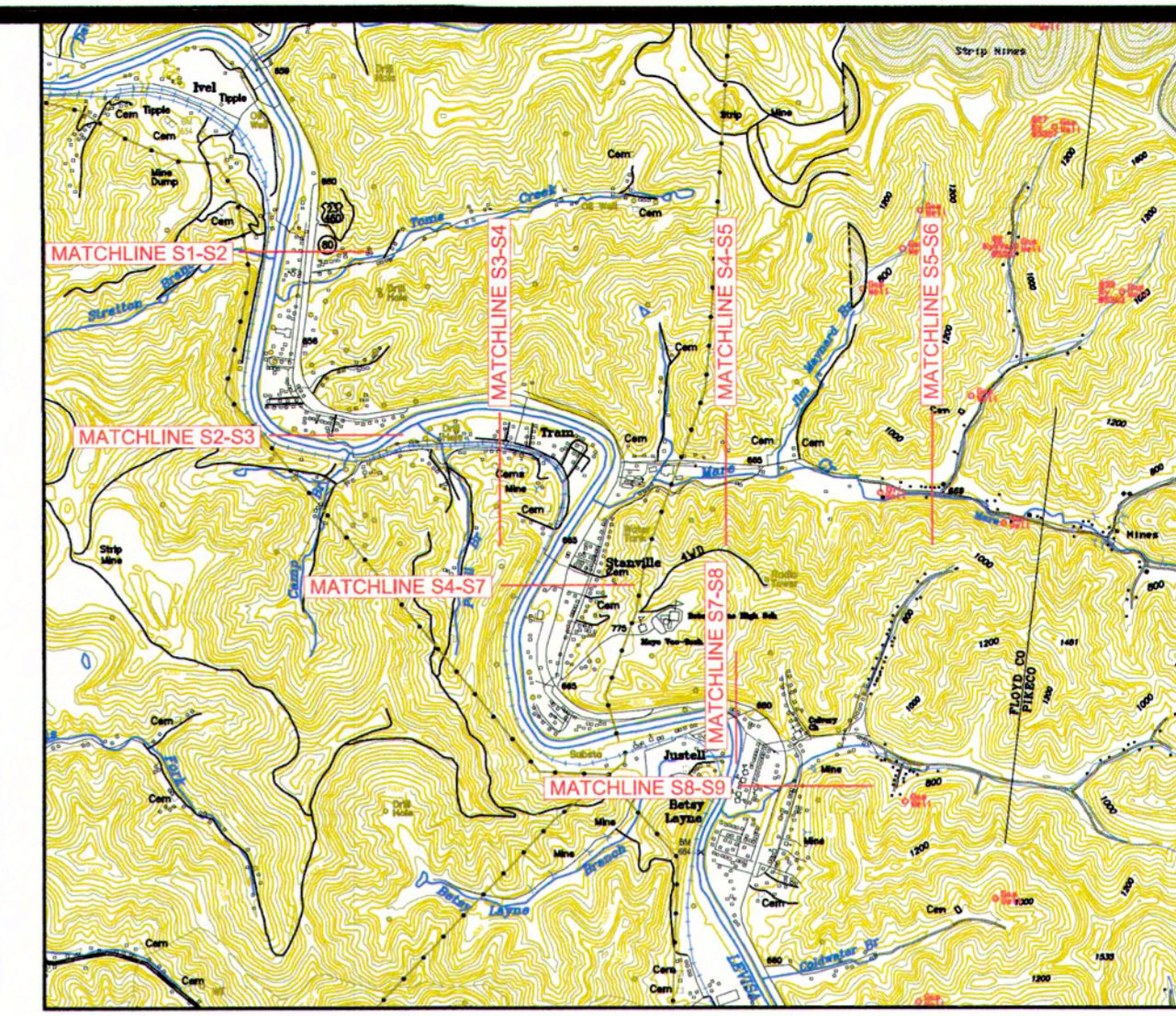
SHEET TITLE

**Alchemy Engineering Associates, Inc.**  
MINING & CIVIL ENGINEERING CONSULTANTS  
H<sub>2</sub>O LABORATORIES  
546 West Old Middlecreek Road  
Prestonsburg, Kentucky 41653  
Phone: (606) 886-8889 Fax: 886-8847

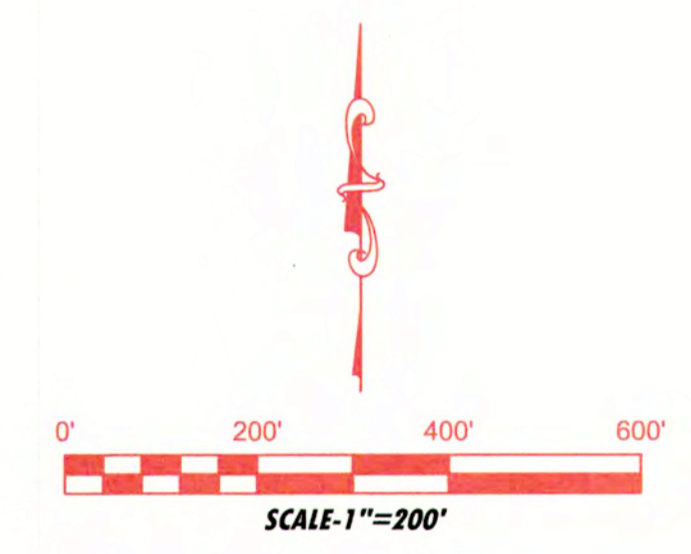


JOB NO. BUD RIFE  
DATE: 02-13-2020  
PRODUCED BY: RS  
NOTES:

SHEET No. **S1**

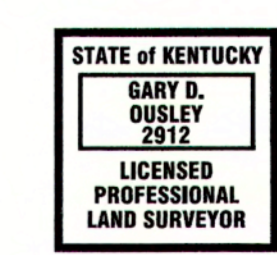


**LOCATION MAP**  
HAROLD & BROADBOTTOM, KY U.S.G.S. QUADRANGLE MAPS  
NOT TO SCALE



- LEGEND**
- 1" PIPELINE
  - 2" PIPELINE
  - 3" PIPELINE
  - VALVE
  - GAS WELL

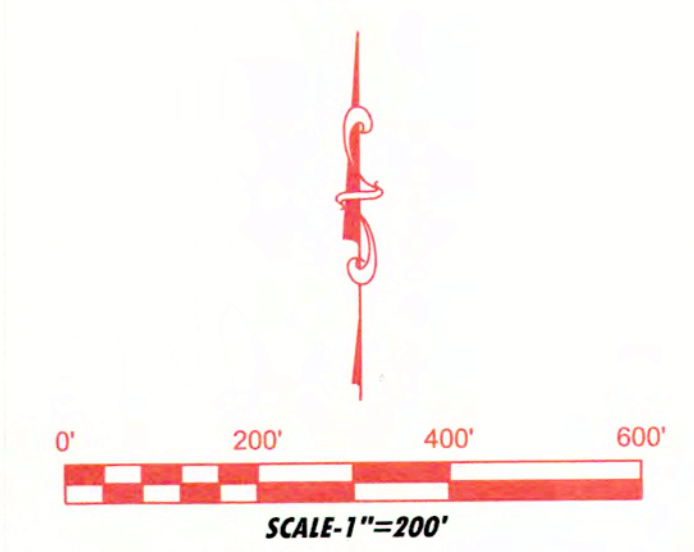
NOTE: ALL PIPELINE AND VALVE LOCATIONS WERE SUPPLIED BY B & H GAS.



GARY D. OUSLEY L.L.S. No. 2912 DATE



**LOCATION MAP**  
 HAROLD & BROADBOTTOM, KY U.S.G.S. QUADRANGLE MAPS  
 NOT TO SCALE



STATE OF KENTUCKY  
**GARY D. OUSLEY**  
 2912  
 LICENSED  
 PROFESSIONAL  
 LAND SURVEYOR

GARY D. OUSLEY      L.S. No. 2912      DATE

- LEGEND**
- 1" PIPELINE
  - 2" PIPELINE
  - 3" PIPELINE
  - VALVE
  - GAS WELL
- NOTE: ALL PIPELINE AND VALVE LOCATIONS WERE SUPPLIED BY B & H GAS.



BUD RIFE  
 B & H GAS  
 FLOYD COUNTY

**GAS PIPELINE MAP**

**Alchemy Engineering Associates, Inc.**  
 MINING & CIVIL ENGINEERING CONSULTANTS  
 H<sub>2</sub>O LABORATORIES  
 546 West Old Middlecreek Road  
 Prestonsburg, Kentucky 41653  
 Phone: (606) 886-8889 Fax: 886-8847

JOB NO. BUD RIFE  
 DATE: 02-13-2020  
 PRODUCED BY: RS  
 NOTES:



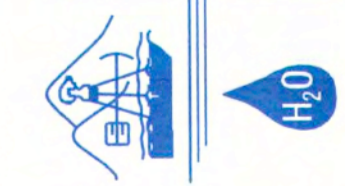
BUD RIFE  
B & H GAS  
FLOYD COUNTY

JOB NAME

SHEET TITLE

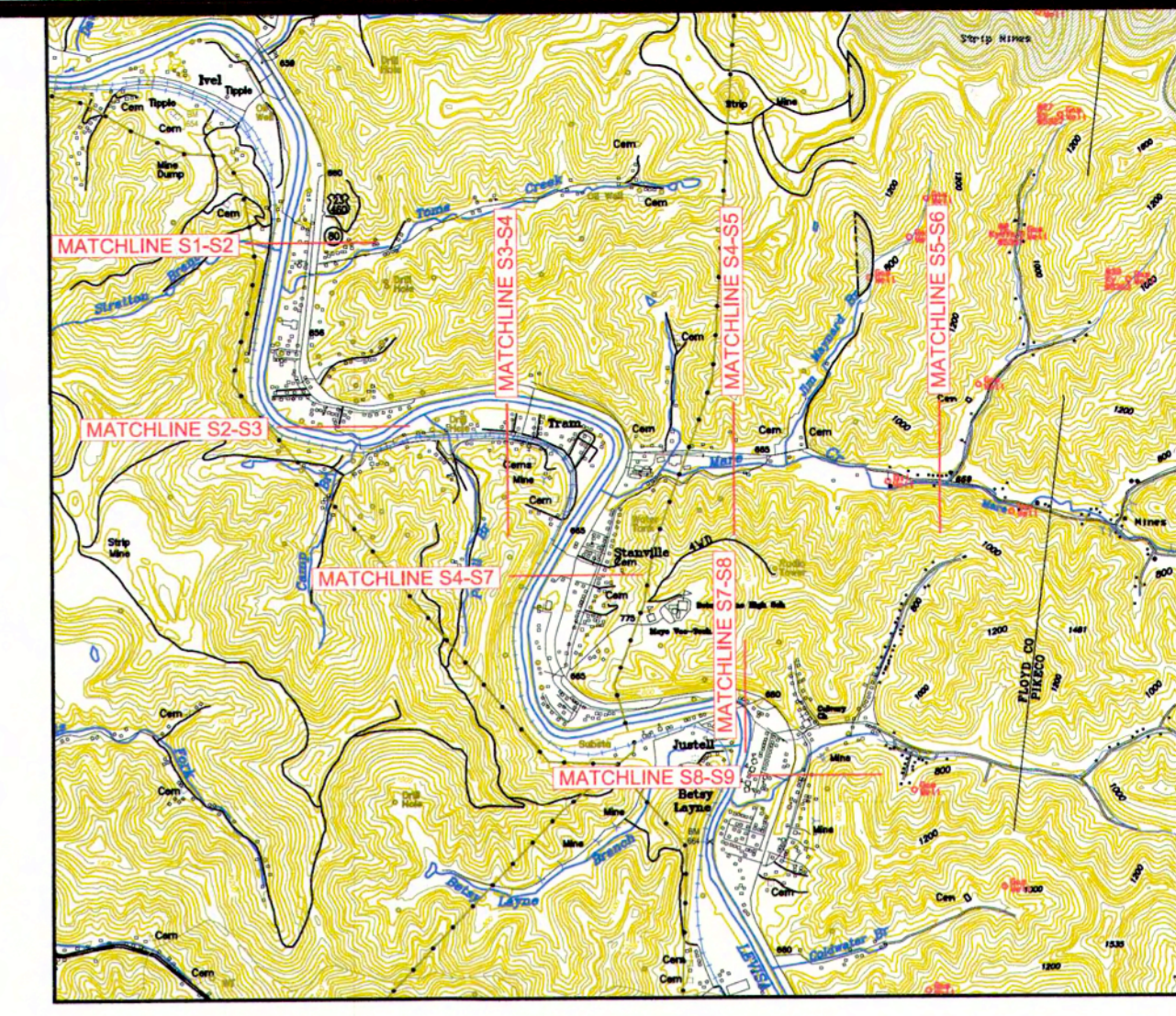
# GAS PIPELINE MAP

**Alchemy Engineering Associates, Inc.**  
MINING & CIVIL ENGINEERING CONSULTANTS  
H<sub>2</sub>O LABORATORIES  
546 West Old Middletown Road  
Phosporic Acid Plant  
Phosporic Acid Plant  
Phone: (606) 686-6889 Fax: 686-6847

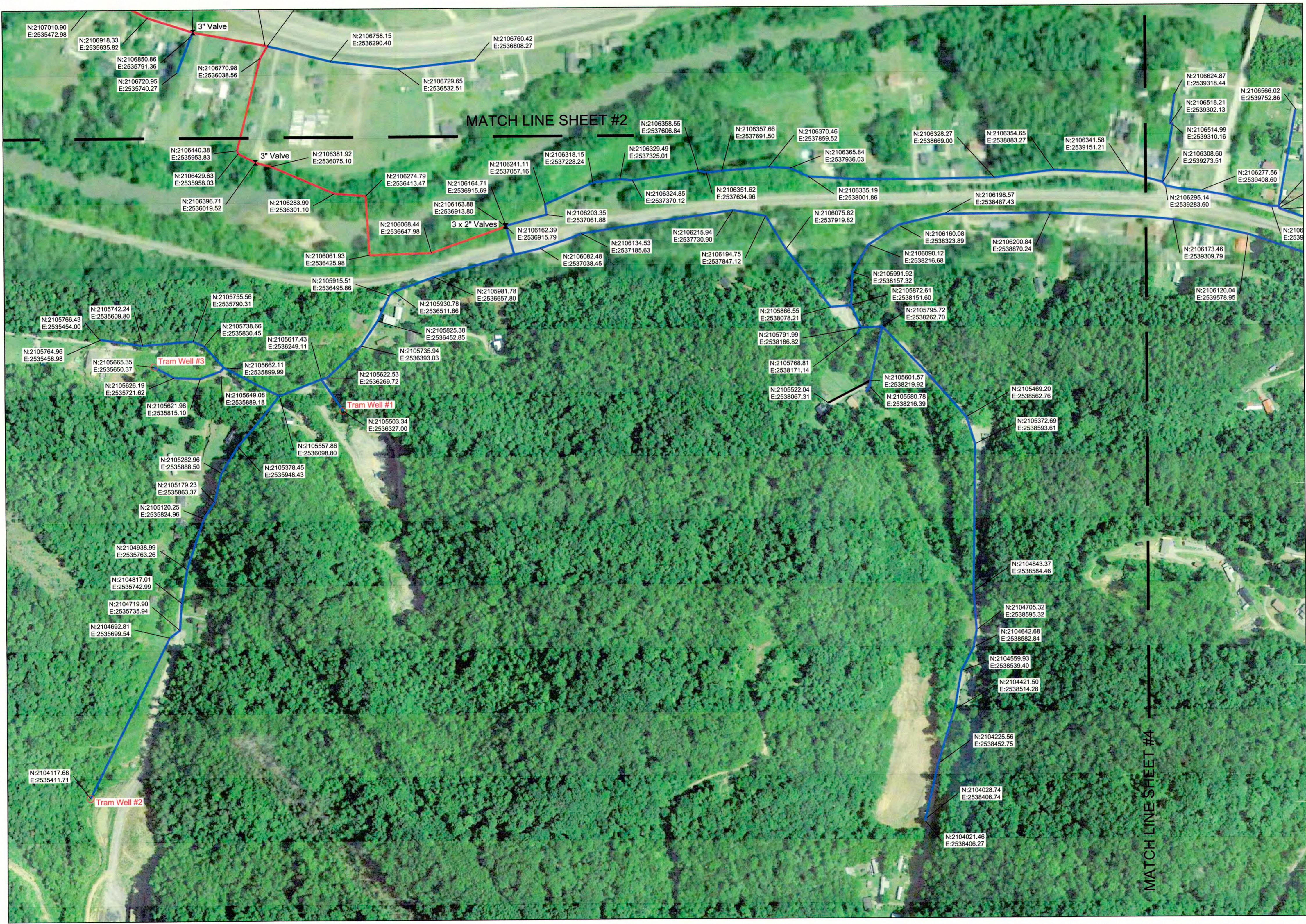
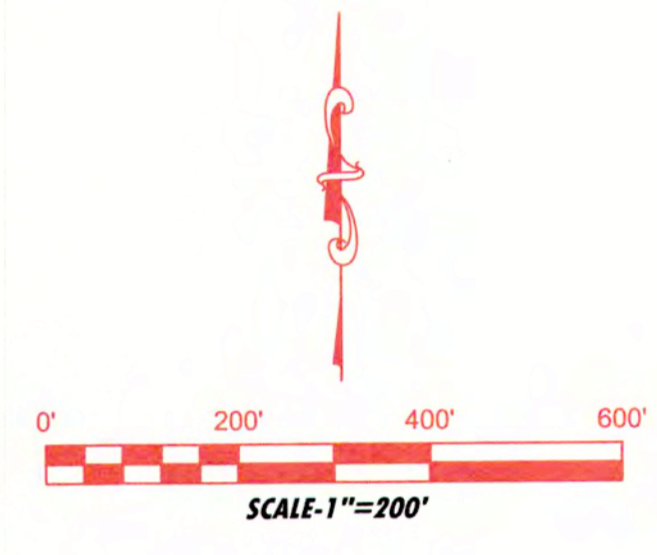


JOB NO. BUD RIFE  
DATE: 02-13-2020  
PRODUCED BY: RS  
NOTES:

SHEET No. **S3**



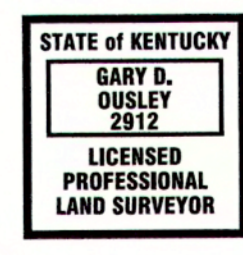
**LOCATION MAP**  
HAROLD & BROADBOTTOM, KY U.S.G.S. QUADRANGLE MAPS  
NOT TO SCALE



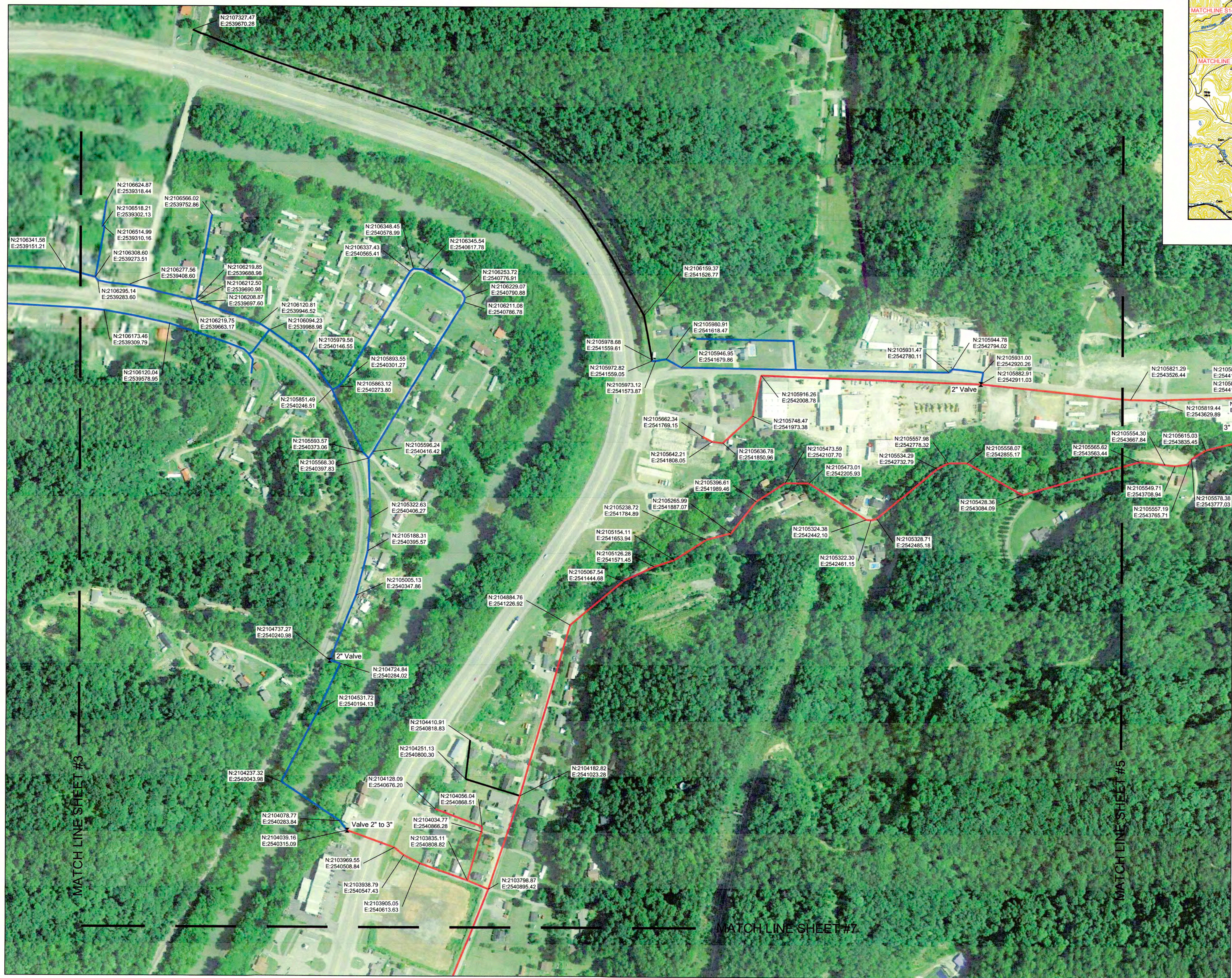
### LEGEND

- 1" PIPELINE
- 2" PIPELINE
- 3" PIPELINE
- VALVE
- GAS WELL

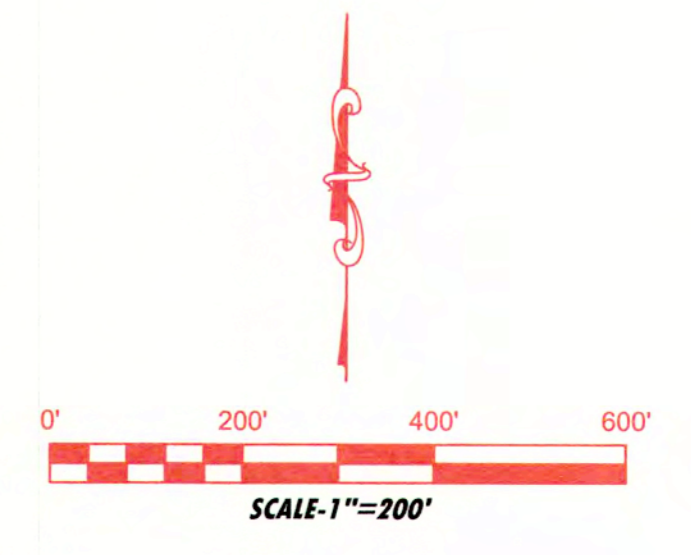
NOTE: ALL PIPELINE AND VALVE LOCATIONS WERE SUPPLIED BY B & H GAS.



GARY D. OUSLEY      L.S. No. 2912      DATE



LOCATION MAP  
HAROLD & BROADBOTTOM, KY U.S.G.S. QUADRANGLE MAPS  
NOT TO SCALE



- LEGEND**
- 1" PIPELINE
  - 2" PIPELINE
  - 3" PIPELINE
  - ⊗ VALVE
  - GAS WELL

NOTE: ALL PIPELINE AND VALVE LOCATIONS WERE SUPPLIED BY B & H GAS.



GARY D. OUSLEY L.S. No. 2912 DATE

SHEET 4 OF 9



BUD RIFE  
B & H GAS  
FLOYD COUNTY

GAS PIPELINE MAP

Alchemy Engineering Associates, Inc.  
MINING & CIVIL ENGINEERING CONSULTANTS  
H<sub>2</sub>O LABORATORIES

546 West Old Middlebrook Road  
Prestonsburg, Kentucky 41653  
Phone: (606) 896-8889 Fax: 896-8847

JOB NO. BUD RIFE  
DATE: 02-13-2020  
PRODUCED BY: RS  
NOTES:

S4



BUD RIFE  
B & H GAS  
FLOYD COUNTY

JOB NAME

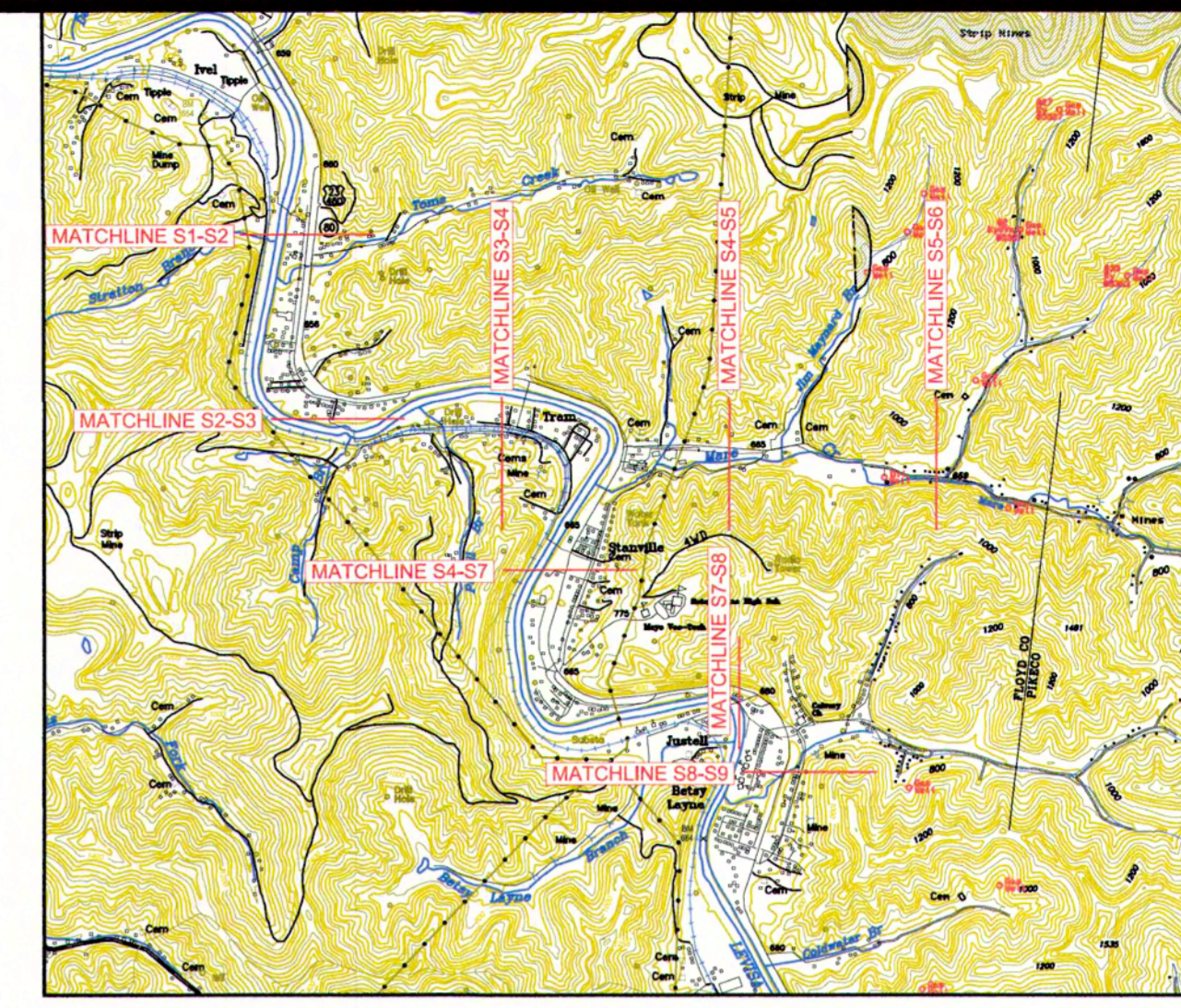
SHEET TITLE

**Alchemy Engineering Associates, Inc.**  
MINING & CIVIL ENGINEERING CONSULTANTS  
H<sub>2</sub>O LABORATORIES  
546 West Old Middlecreek Road  
Prestonsburg, Kentucky 41653  
Phone: (606) 686-8869 Fax: 686-8847

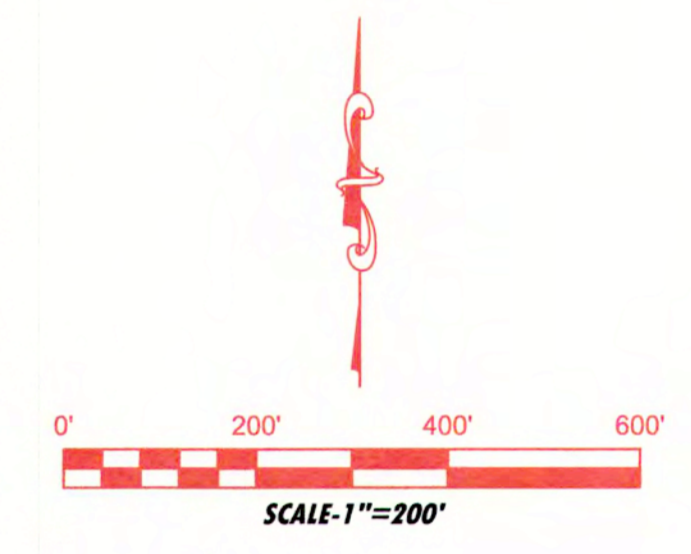


JOB NO. BUD RIFE  
DATE: 07-15-2020  
PRODUCED BY: RS  
NOTES:

SHEET No. **S5**



**LOCATION MAP**  
HAROLD & BROADBOTTOM, KY U.S.G.S. QUADRANGLE MAPS  
NOT TO SCALE



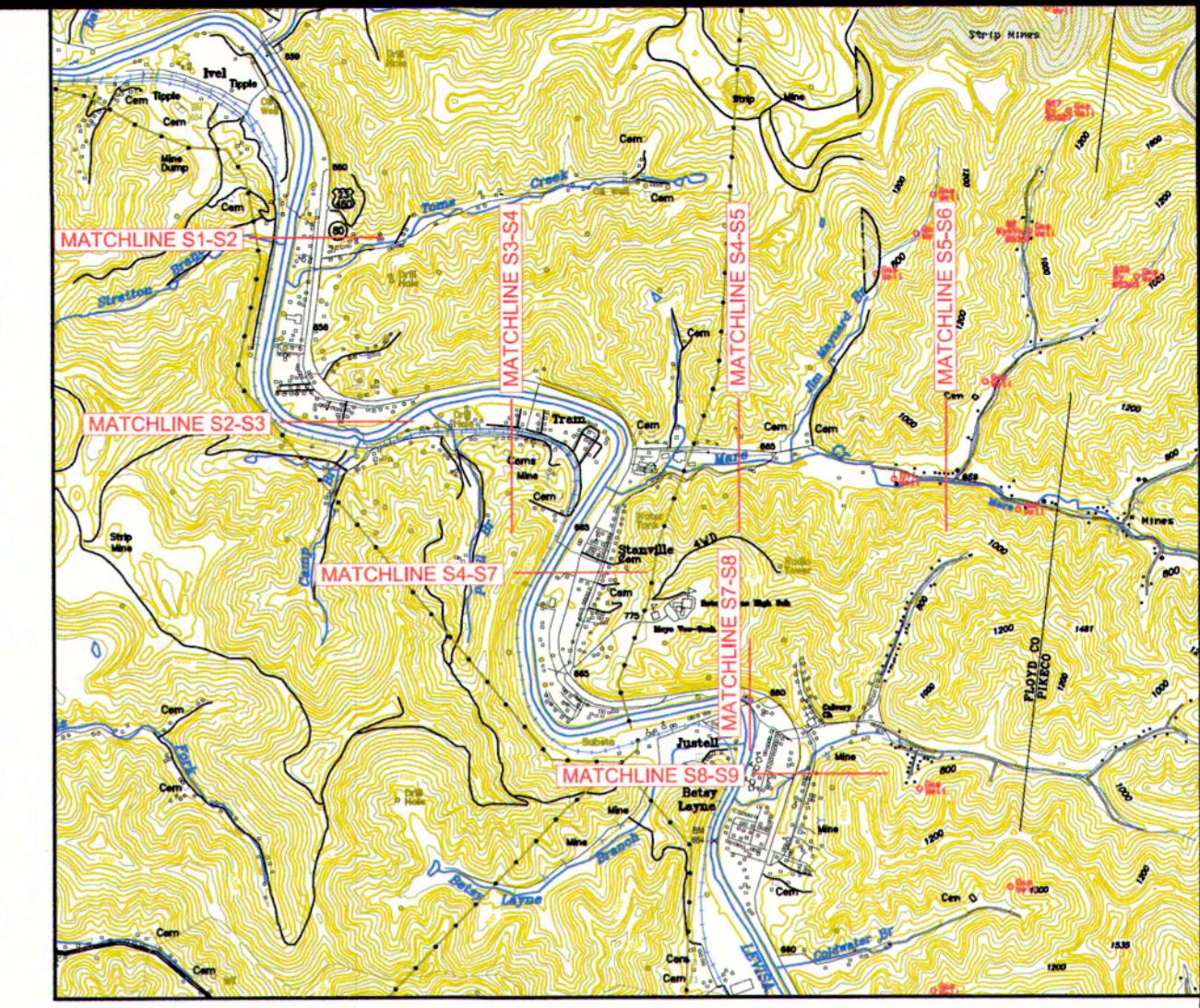
**LEGEND**

- 1" PIPELINE
- 2" PIPELINE
- 3" PIPELINE
- VALVE
- GAS WELL

NOTE: ALL PIPELINE AND VALVE LOCATIONS WERE SUPPLIED BY B & H GAS.



GARY D. OUSLEY L.L.S. No. 2912 DATE



**LOCATION MAP**  
 HAROLD & BROADBOTTOM, KY U.S.G.S. QUADRANGLE MAPS  
 NOT TO SCALE

**LEGEND**

- 1" PIPELINE
- 2" PIPELINE
- 3" PIPELINE
- VALVE
- GAS WELL

NOTE: ALL PIPELINE AND VALVE LOCATIONS WERE SUPPLIED BY B & H GAS.

STATE OF KENTUCKY  
**GARY D. OUSLEY**  
 2912  
 LICENSED PROFESSIONAL LAND SURVEYOR

GARY D. OUSLEY L.L.S. No. 2912 DATE

**SHEET 6 OF 9**



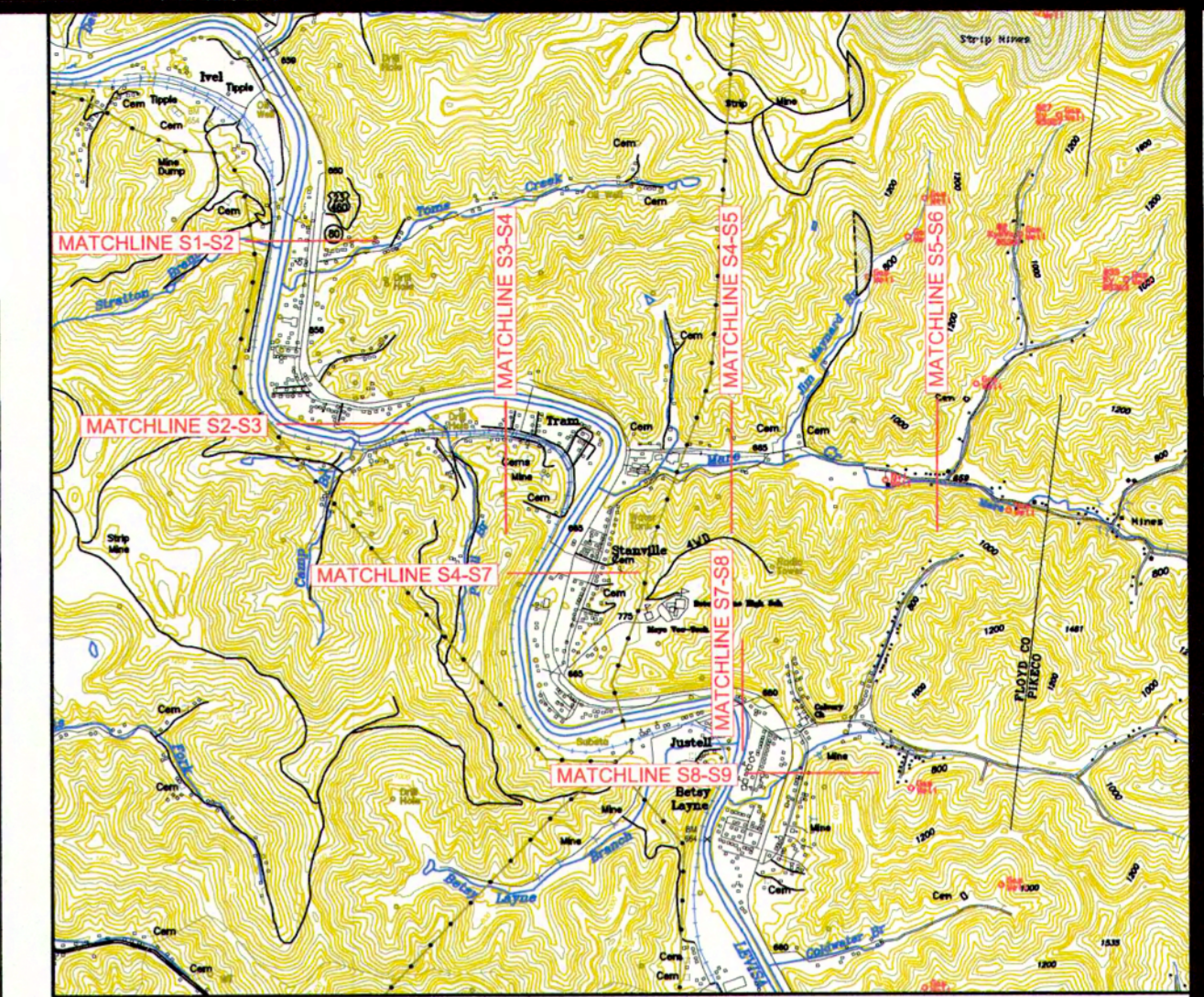
**BUD RIFE  
 B & H GAS  
 FLOYD COUNTY**

**GAS PIPELINE MAP**

**Acheny Engineering Associates, Inc.**  
 MINING & CIVIL ENGINEERING CONSULTANTS  
 H<sub>2</sub>O LABORATORIES  
 546 West Old Middletown Road  
 Prestonsburg, Kentucky 41653  
 Phone: (606) 886-8889 Fax: 886-8847

JOB NO. BUD RIFE  
 DATE: 03-13-2020  
 PRODUCED BY: RS  
 NOTES:

SHEET No. **S6**



**LOCATION MAP**  
 HAROLD & BROADBOTTOM, KY U.S.G.S. QUADRANGLE MAPS  
 NOT TO SCALE

- LEGEND**
- 1" PIPELINE
  - 2" PIPELINE
  - 3" PIPELINE
  - VALVE
  - GAS WELL

NOTE: ALL PIPELINE AND VALVE LOCATIONS WERE SUPPLIED BY B & H GAS.



GARY D. OUSLEY L.L.S. No. 2912 DATE

**SHEET 7 OF 9**



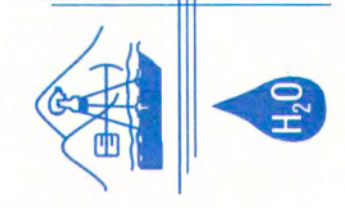
BUD RIFE  
 B & H GAS  
 FLOYD COUNTY

JOB NAME

SHEET TITLE

**GAS PIPELINE MAP**

**Acheney Engineering Associates, Inc.**  
 MINING & CIVIL ENGINEERING CONSULTANTS  
 H<sub>2</sub>O LABORATORIES  
 546 West Old Middlecreek Road  
 Prestonsburg, Kentucky 41653  
 Phone: (606) 886-8889 Fax: 886-8847



JOB NO. BUD RIFE  
 DATE: 02-13-2020  
 PRODUCED BY: RS  
 NOTES:

SHEET No. **S7**





**LOCATION MAP**  
 HAROLD & BROADBOTTOM, KY U.S.G.S. QUADRANGLE MAPS  
 NOT TO SCALE

**LEGEND**

- 1" PIPELINE
- 2" PIPELINE
- 3" PIPELINE
- VALVE
- GAS WELL

NOTE: ALL PIPELINE AND VALVE LOCATIONS WERE SUPPLIED BY B & H GAS.

STATE OF KENTUCKY  
 GARY D. OUSLEY  
 2912  
 LICENSED  
 PROFESSIONAL  
 LAND SURVEYOR

GARY D. OUSLEY L.S. No. 2912 DATE

**SHEET 8 OF 9**



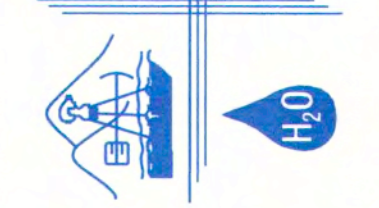
BUD RIFE  
 B & H GAS  
 FLOYD COUNTY

JOB NAME

SHEET TITLE

**GAS PIPELINE MAP**

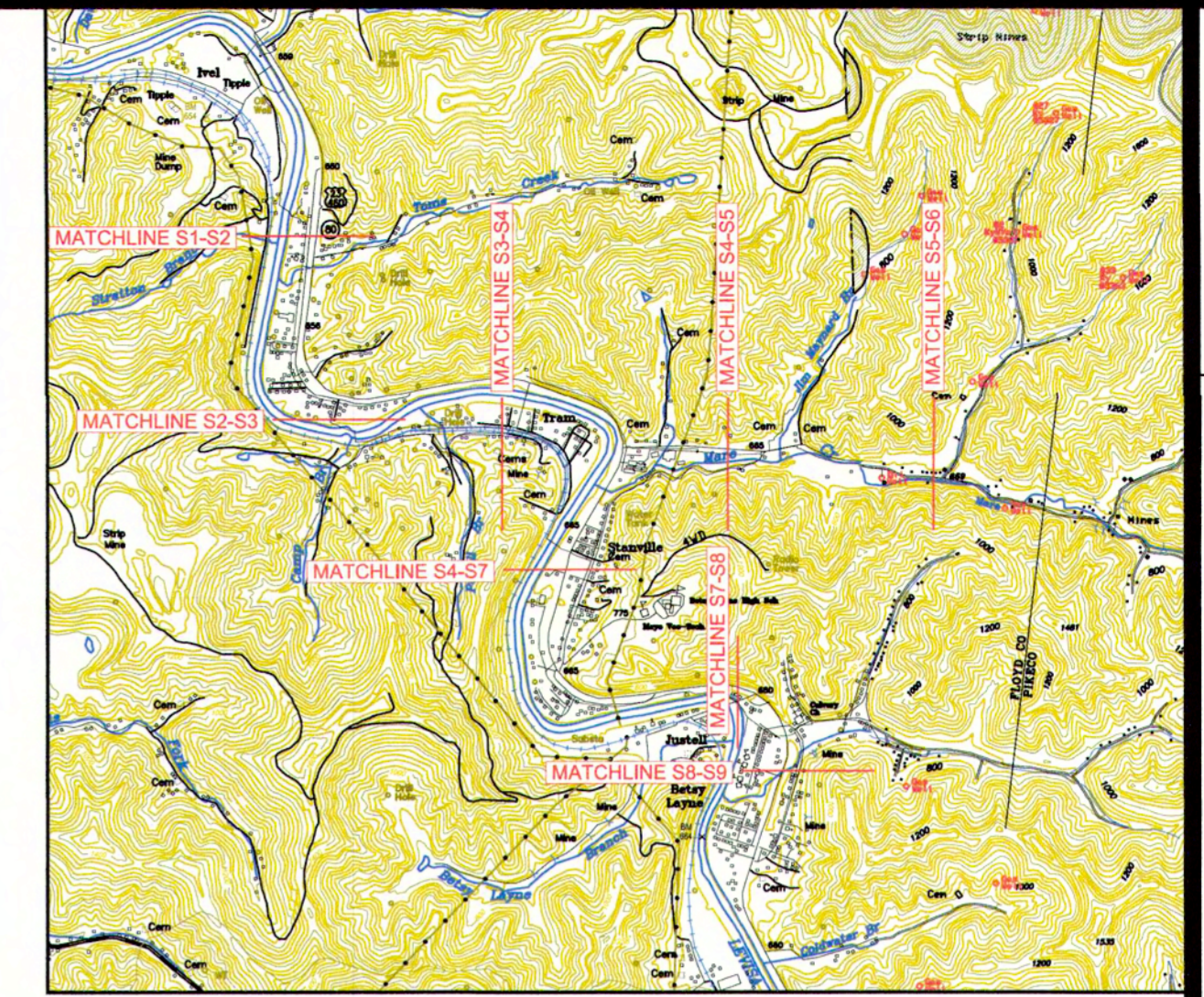
**Alchemy Engineering Associates, Inc.**  
 MINING & CIVIL ENGINEERING CONSULTANTS  
 H<sub>2</sub>O LABORATORIES  
 546 West Old Middlecreek Road  
 Prestonsburg, Kentucky 41659  
 Phone: (606) 666-8888 Fax: 666-8847



JOB NO. BUD RIFE  
 DATE: 02-13-2020  
 PRODUCED BY: RS  
 NOTES:

SHEET No.

**S8**



**LOCATION MAP**  
HAROLD & BROADBOTTOM, KY U.S.G.S. QUADRANGLE MAPS  
NOT TO SCALE

**LEGEND**

- 1" PIPELINE
- 2" PIPELINE
- 3" PIPELINE
- VALVE
- GAS WELL

NOTE: ALL PIPELINE AND VALVE LOCATIONS WERE SUPPLIED BY B & H GAS.



GARY D. OUSLEY L.L.S. No. 2912 DATE

**SHEET 9 OF 9**



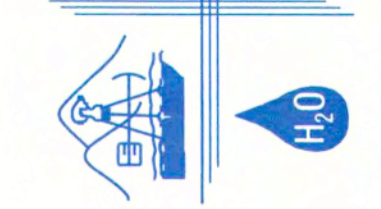
**BUD RIFE  
B & H GAS  
FLOYD COUNTY**

JOB NAME

SHEET TITLE

**GAS PIPELINE MAP**

**Alchemy Engineering Associates, Inc.**  
MINING & CIVIL ENGINEERING CONSULTANTS  
H<sub>2</sub>O LABORATORIES  
546 West Old Middlecreek Road  
Prestonsburg, Kentucky 41653  
Phone: (606) 886-8889 Fax: 886-8847



JOB NO. BUD RIFE  
DATE: 02-13-2020  
PRODUCED BY: RS  
NOTES:

SHEET No. **S9**