

BLUEBIRD SOLAR LANDSCAPE PROJECT NARRATIVE

LANDSCAPE INTENT

The intent of the landscape design for the Bluebird Solar site is to have the trees and shrubs be dense enough to screen/break up views to the solar array fields year-round and to blend with the surrounding rural character comprised of its woodlots and tree lined roads and fields. This is accomplished by preserving existing landscape vegetation, new plantings consisting of a mix of native trees and shrubs, and a native grass/pollinator mix located within a thirty-foot (30') landscape buffer that surrounds the site. The plant material selected for the landscape buffer provides layers of screening and habitat for the various types of wildlife in the area. New tree plantings are selected to provide various heights, shapes, and fall color. The selected shrubs provide a variety of foliage textures, visual interest through bloom color, and a supplemental food source for wildlife. In total, the selected plant materials screen and break-up views to the solar arrays while blending with the surrounding landscape.

LANDSCAPE BUFFER ZONES

Four different landscape buffers have been designed for the project: Segment 1, Segment 2, Segment 3, and Segment 4. Each landscape buffer segment is approximately 585' in length, comprised of different dominant tree and shrub landscape material, and designed so that the landscape buffers blend together.

Segment 1

Dominate Trees and Shrub

- Black Walnut (*Juglens nigra*)
- Eastern Red Cedar (*Juniperus virginiana*)
- Coralberry (*Symphoricarpos orbiculatus*)

Secondary Tree and Shrubs

- Pin Oak (*Quercus palustris*)
- Black Raspberry (*Rubus occidentalis*)
- Black Huckleberry (*Gaylussacia baccata*)

Segment 2

Dominate Tree and Shrub

- Eastern Red Cedar (*Juniperus virginiana*)
- Coralberry (*Symphoricarpos orbiculatus*)

Secondary Tree and Shrubs

- Silver Maple (*Acer saccharinum*)
- Prairie Crabapple (*Malus ioensis*)
- Southern Viburnum (*Viburnum dentatum*)
- American Hazelnut (*Corylus americana*)

Segment 3

Dominate Trees and Shrub

- Eastern Red Cedar (*Juniperus virginiana*)
- Silver Maple (*Acer saccharinum*)
- Black Raspberry (*Rubus occidentalis*)

Secondary Trees and Shrubs

- Redbud (*Cercis canadensis*)
- American Plum (*Prunus americana*)
- Black Raspberry (*Rubus occidentalis*)
- Black Huckleberry (*Gaylussacia baccata*)

Segment 4

Dominate Trees and Shrub

- Eastern Red Cedar (*Juniperus virginiana*)
- American Hazelnut (*Corylus Americana*)

Secondary Trees and Shrubs

- Ilex Opaca (*American Holly*)
- Pinus Echinata (*Shortleaf Pine*)
- Corralberry (*Symphoricarpos orbiculatus*)
- Southern Viburnum (*Viburnum dentatum*)

County Option

Dominate Trees and Shrub

- Eastern Red Cedar (*Juniperus virginiana*)

Secondary Trees and Shrubs

- American Holly (*Ilex opaca*)
- Shortleaf Pine (*Pinus echinata*)

Sections of perimeter fencing that will require landscape buffer zones range in length from approximately 60’ (a portion of one segment) to 3,300’ (5.5 segments). Each segment will use the same native grass/pollinator seed mix. The intent is to interchange the landscape buffers as they are used around the site.

LANDSCAPE PLANT PALETTE

<u>Botanical Name</u>	<u>Common Name</u>	<u>Evergreen / Deciduous</u>
Trees		
Acer saccharinum	Silver Maple	Deciduous
Amelanchier arborea	Downy Serviceberry	Deciduous
Cercis canadensis	Redbud	Deciduous
Comus amomum	Silky Dogwood	Deciduous
Ilex Opaca	American Holly	Evergreen
Juglans nigra	Black Walnut	Deciduous
Juniperus virginiana	Eastern Red Cedar	Evergreen
Malus ioensis	Prairie Crabapple	Deciduous
Pinus echinate	Shortleaf Pine	Evergreen
Prunus americana	American Plum	Deciduous
Quercus palustris	Pin Oak	Deciduous
Shrubs		
Corylus americana	American Hazelnut	Deciduous
Gaylussacia baccata	Black Huckleberry	Deciduous
Hydrangea arborescens	Wild Hydrangea	Deciduous
Rubus occidentalis	Black Raspberry	Deciduous

Symphoricarpos orbiculatus	Coralberry	Deciduous
Viburnum dentatum	Southern Viburnum	Semi-Evergreen

NATIVE GRASS/POLLINATOR SEED MIX

<u>Botanical Name</u>	<u>Common Name</u>
Aster laevis	Smooth Aster
Baptisia australis	Blue False Indigo
Bouteloua curtipendula	Side Oats Grama
Cassia fasciculata	Partridge Pea
Coreopsis lanceolata	Lance Leaved Coreopsis
Dalea candida	White Prairie Clover
Dalea purpurea	Purple Prairie Clover
Eryngium yuccifolium	Rattlesnake Master
Gaillardia pulchella	Indian Blanket
Heliopsis helianthoides	False Sunflower
Liatris spicata	Spiked Blazing Star
Monarda fistulosa	Bergamot
Panicum virgatum	Switchgrass
Parthenium integrifolium	Wild Quinine
Ratibida pinnata	Greyheaded Coneflower
Rudbeckia hirta	Blackeyed Susan
Schizachyrium scoparium	Little Bluestem
Solidago rigida	Rigid Goldenrod
Solidago nemoralis	Gray Goldenrod
Sporobolus compositus	Tall Dropseed
Tridens flavus	Purple Top

LANDSCAPE BUFFER ZONES

Four different landscape buffers have been designed for the project: Segment 1, Segment 2, Segment 3, and Segment 4. Each landscape buffer segment is approximately 585' in length, comprised of different dominant tree and shrub landscape material, and designed so that the landscape buffers blend together.

Segment 1

- Dominate Trees and Shrub
- Black Walnut (*Juglens nigra*)
 - Eastern Red Cedar (*Juniperus virginiana*)
 - Coralberry (*Symphoricarpos orbiculatus*)
- Secondary Tree and Shrubs
- Pin Oak (*Quercus palustris*)
 - Black Raspberry (*Rubus occidentalis*)
 - Black Huckleberry (*Gaylussacia baccata*)

Segment 2

- Dominate Tree and Shrub
- Eastern Red Cedar (*Juniperus virginiana*)
 - Coralberry (*Symphoricarpos orbiculatus*)
- Secondary Tree and Shrubs
- Silver Maple (*Acer saccharinum*)
 - Prairie Crabapple (*Malus ioensis*)
 - Southern Viburnum (*Viburnum dentatum*)
 - American Hazelnut (*Corylus americana*)

Segment 3

- Dominate Trees and Shrub
- Eastern Red Cedar (*Juniperus virginiana*)
 - Silver Maple (*Acer saccharinum*)
 - Black Raspberry (*Rubus occidentalis*)
- Secondary Trees and Shrubs
- Redbud (*Cercis canadensis*)
 - American Plum (*Prunus americana*)
 - Black Raspberry (*Rubus occidentalis*)
 - Black Huckleberry (*Gaylussacia baccata*)

Segment 4

- Dominate Trees and Shrub
- Eastern Red Cedar (*Juniperus virginiana*)
 - American Hazelnut (*Corylus Americana*)
- Secondary Trees and Shrubs
- Ilex Opaca (*American Holly*)
 - Pinus Echinata (*Shortleaf Pine*)
 - Corralberry (*Symphoricarpos orbiculatus*)
 - Southern Viburnum (*Viburnum dentatum*)

Sections of perimeter fencing that will require landscape buffer zones range in length from approximately 60' (a portion of one segment) to 3,300' (5.5 segments). Each segment will use the same native grass/pollinator seed mix. The intent is to interchange the landscape buffers as they are used around the site.

LANDSCAPE INTENT

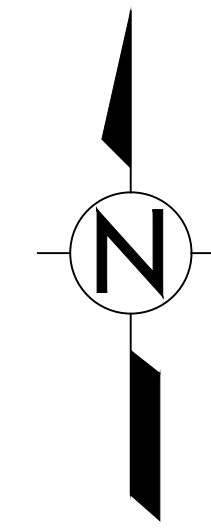
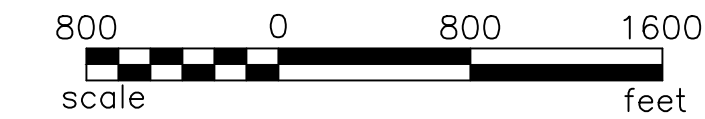
The intent of the landscape design for the Bluebird Solar site is to have the trees and shrubs be dense enough to screen/break up views to the solar array fields year-round and to blend with the surrounding rural character comprised of its woodlots and tree lined roads and fields. This is accomplished by preserving existing landscape vegetation, new plantings consisting of a mix of native trees and shrubs, and a native grass/pollinator mix located within a thirty-foot (30') landscape buffer that surrounds the site. The plant material selected for the landscape buffer provides layers of screening and habitat for the various types of wildlife in the area. New tree plantings are selected to provide various heights, shapes, and fall color. The selected shrubs provide a variety of foliage textures, visual interest through bloom color, and a supplemental food source for wildlife. In total, the selected plant materials screen and break-up views to the solar arrays while blending with the surrounding landscape.

LANDSCAPE LEGEND

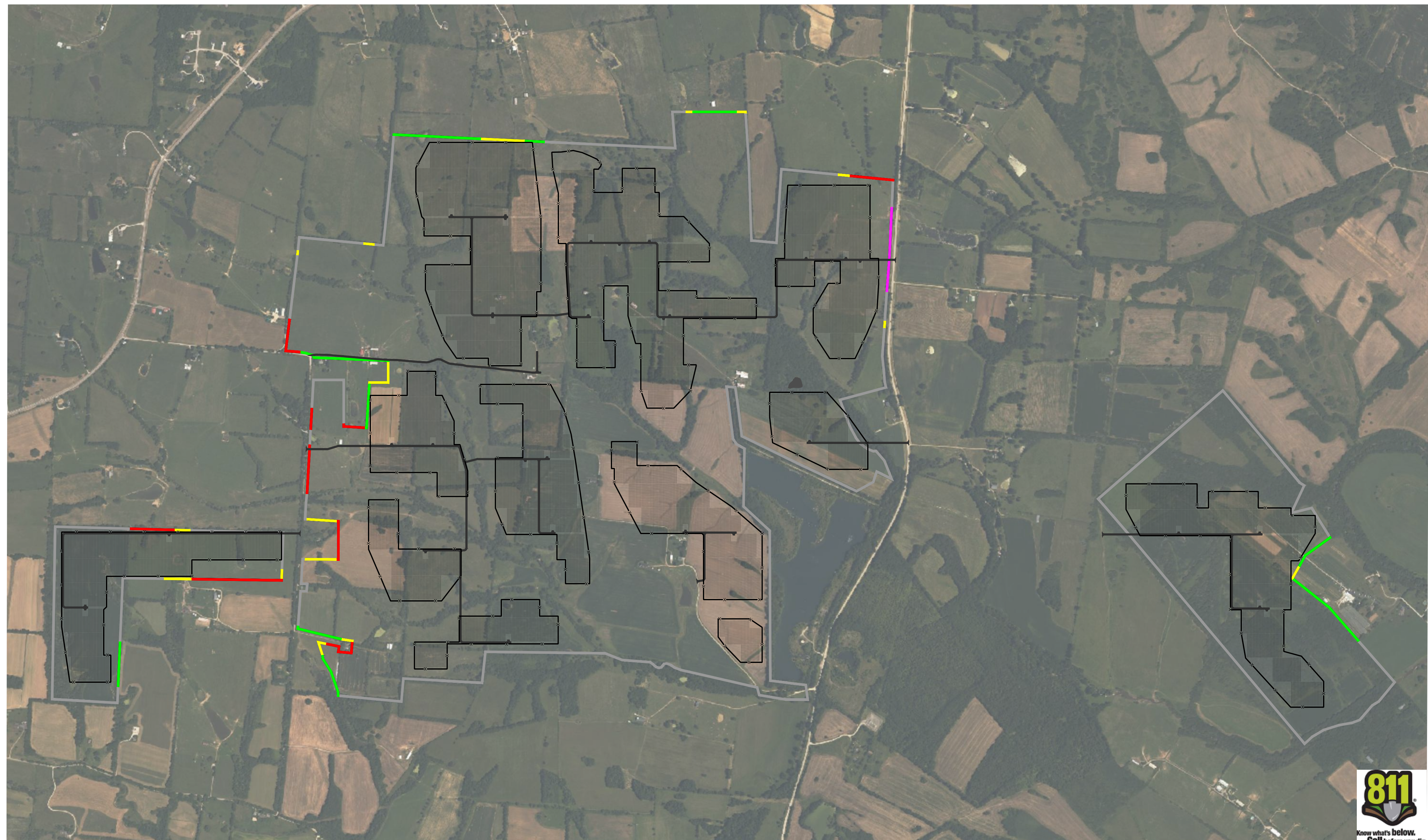
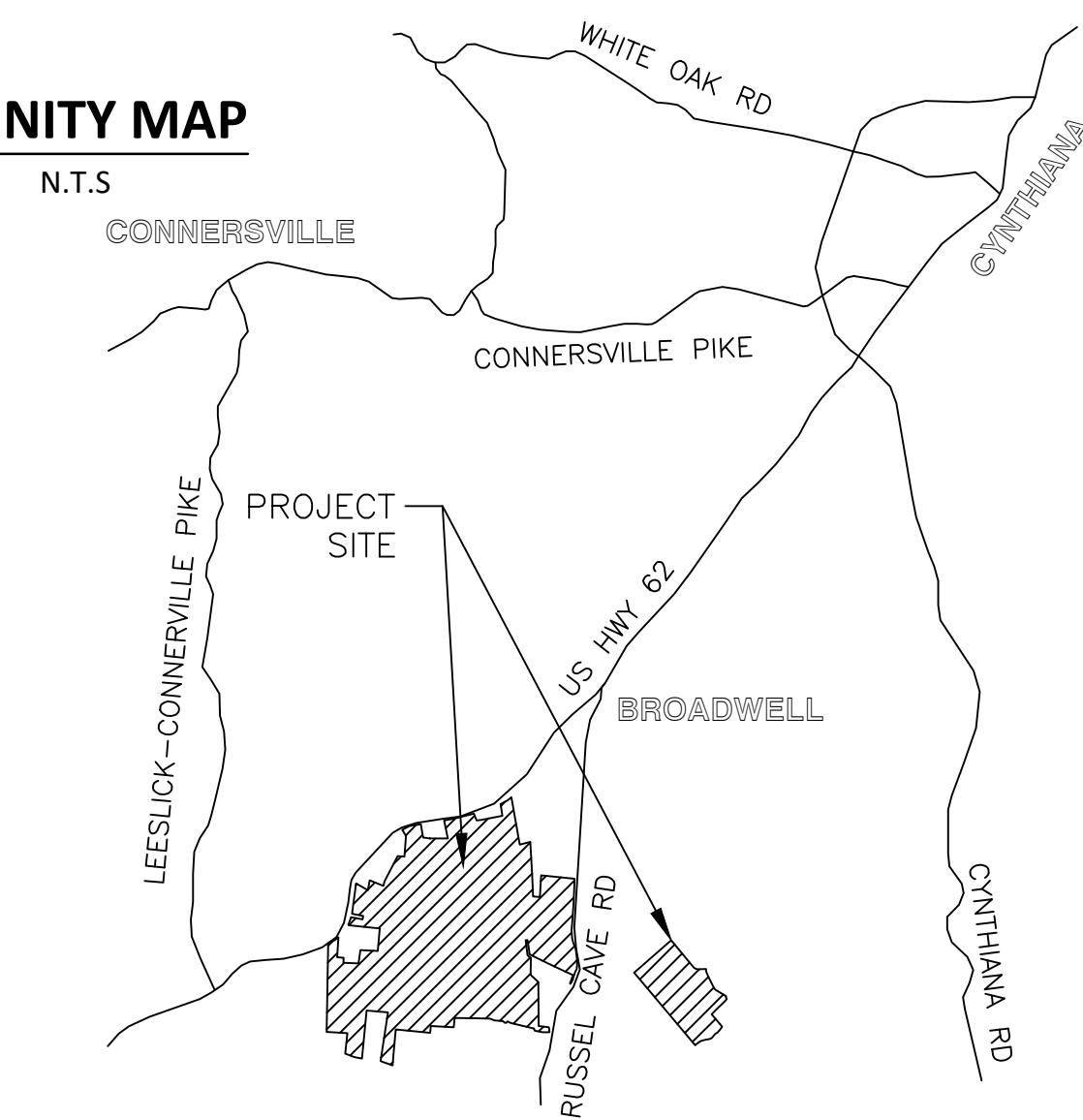
SYMBOL	DESCRIPTION
	EXISTING VEGETATION NO BUFFER REQUIRED
	SEGMENT 1
	SEGMENT 2
	SEGMENT 3
	SEGMENT 4

SEE SHEET L2.02 FOR TYPICAL LANDSCAPE PLANTING DESIGN IN BUFFER AREAS

30' LANDSCAPE BUFFER TO BE SEEDED WITH NATIVE GRASS/POLLINATOR SEED MIX, SEEDING TO EXTEND UNDER ALL PLANTINGS



VICINITY MAP



REV	DATE	DESCRIPTION	DRW		CK		APV	
			CRK	JDL	CRK	JDL	CRK	JDL
0	3/05/21	CLIENT REVIEW						
1	3/09/21	CLIENT REVIEW						
2	4/27/21	CLIENT REVIEW						

SCALE: 1"=5'
SIZE: 22"x34"
PROJECT#: AZENE1917-06



LANDSCAPE LEGEND

SYMBOL BOTANICAL NAME
COMMON NAME

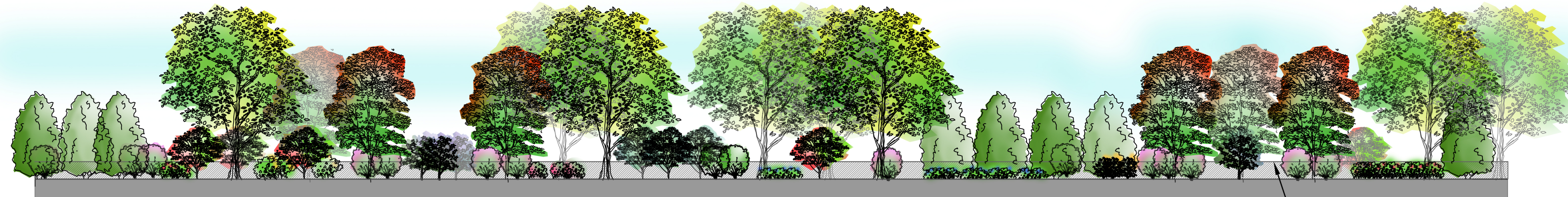
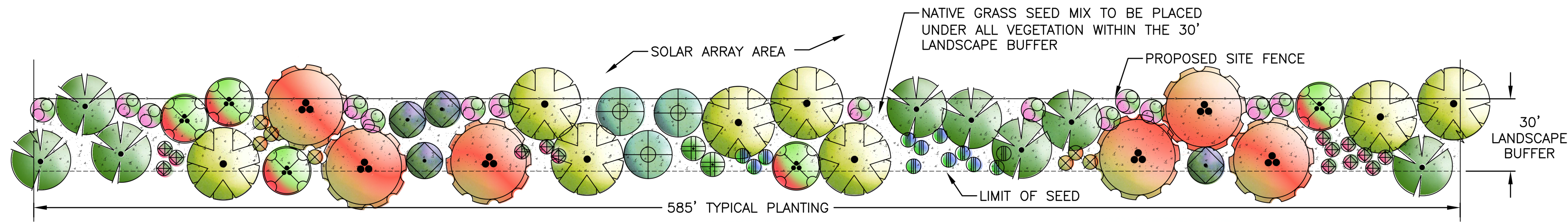
- ACER SACCHARINUM
SILVER MAPLE
- AMELANCHIER ARBOREA
DOWNY SERVICEBERRY
- CERCIS CANADENSIS
REDBUD
- CORNUS AMOMUM
SILKY DOGWOOD
- ILEX OPACA
AMERICAN HOLLY
- JUNIPERUS VIRGINIANA
EASTERN RED CEDAR
- JUGLANS NIGRA
BLACK WALNUT
- MALUS IOENSIS
PRAIRIE CRABAPPLE
- PINUS ECHINATA
SHORTLEAF PINE
- PRUNUS AMERICANA
AMERICAN PLUM
- QUERCUS PALUSTRIS
PIN OAK

- CORYLUS AMERICANA
AMERICAN HAZELNUT
- GAYLUSSACIA BACCATA
BLACK HUCKLEBERRY
- HYDRANGEA ARBORESCENS
WILD HYDRANGEA
- RUBUS OCCIDENTALIS
BLACK RASPBERRY
- SYMPHORICARPOS ORBICULATUS
CORALBERRY
- VIBURNUM DENTATUM
SOUTHERN VIBURNUM

NATIVE GRASS/POLLINATOR SEED MIX

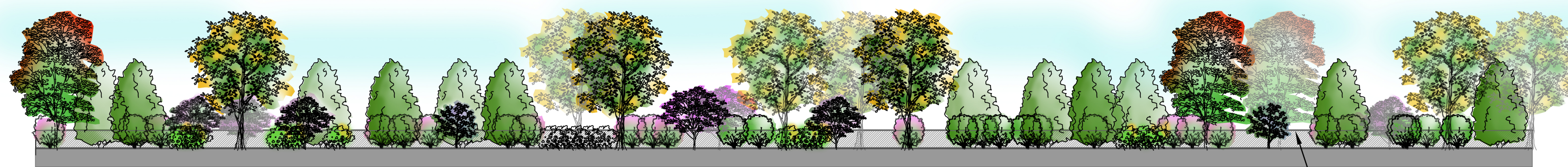
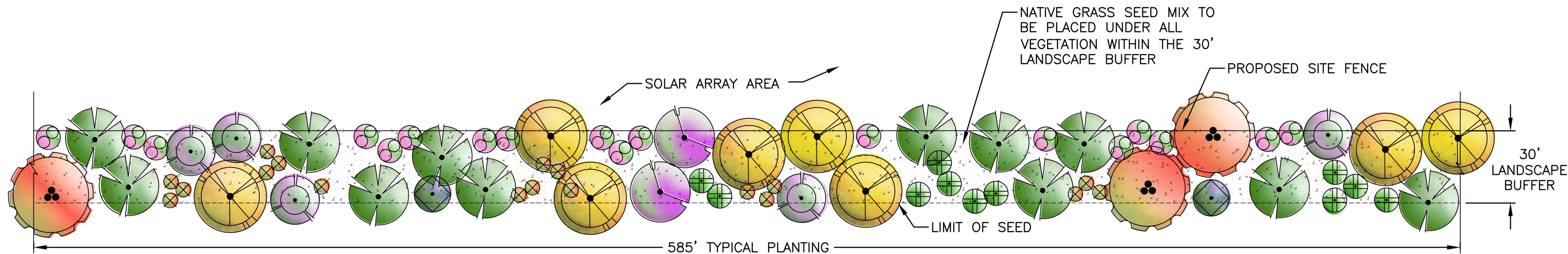
BOTANICAL NAME / COMMON NAME

- ASTER LAEVIS / SMOOTH ASTER
- BAPTISIA AUSTRALIS / BLUE FALSE INDIGO
- BOUTELOUA CURTIPENDULA / SIDE OATS GRAMA
- CASSIA FASCICULATA / PARTRIDGE PEA
- COREOPSIS LANCEOLATA / LANCE LEAVED COREOPSIS
- DALEA CANDIDA / WHITE PRAIRIE CLOVER
- DALEA PURPUREA / PURPLE PRAIRIE CLOVER
- ERYNGIUM YUCCIFOLIUM / RATTLESNAKE MASTER
- GAILLARDIA PULCHELLA / INDIAN BLANKET
- HELIOPSIS HELIANTHOIDES / FALSE SUNFLOWER
- LIATRIS SQUARROSA / BLAZING STAR
- MONARDA FISTULOSA / BERGAMOT
- PANICUM VIRGATUM / SWITCHGRASS
- PARTHENIUM INTEGRIFOLIUM / WILD QUININE
- RATIBIDA PINNATA / GREYHEADED CONEFLOWER
- RUDBECKIA HIRTA / BLACKEYED SUSAN
- SCHIZACHYRIUM SCOPARIUM / LITTLE BLUESTEM
- SOLIDAGO RIGIDA / RIGID GOLDENROD
- SOLIDAGO NEMORALIS / GRAY GOLDENROD
- SPOROBOLUS COMPOSITUS / TALL DROPSSEED
- TRIDENS FLAVUS / PURPLE TOP



PROPOSED SITE FENCE

SEGMENT 1



PROPOSED SITE FENCE

SEGMENT 2

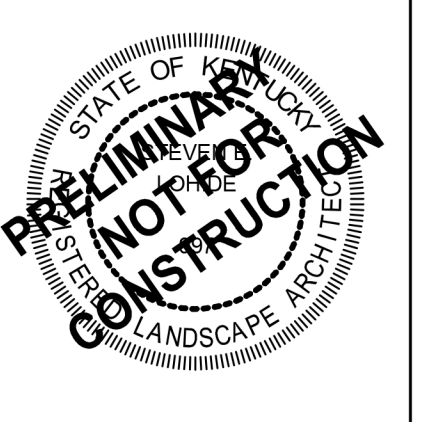
ENGINEER



DEVELOPER



CONTRACTOR



REV	DATE	DESCRIPTION	APV		JDL		SEL	
			DRW	CK	CRK	JDL	UP	I
0	3/05/21	CLIENT REVIEW						
1	3/08/21	CLIENT REVIEW						
2	4/27/21	CLIENT REVIEW						

SCALE: 1"=30'
SIZE: 22"x34"
PROJECT#: AZENE1917-06

PROJECT
BLUEBIRD SOLAR
HARRISON COUNTY, CYNTHIANA, KENTUCKY
TITLE
TYPICAL LANDSCAPE SEGMENT PLANTING





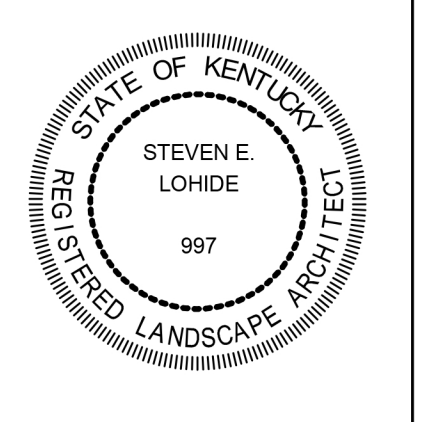
ENGINEER



DEVELOPER



CONTRACTOR



REV	DATE	DESCRIPTION	APV		JDL		SEL	
			DRW	CK	CRK	JDL	UP	SEL
0	3/05/21	CLIENT REVIEW						
1	3/08/21	CLIENT REVIEW						
2	4/27/21	CLIENT REVIEW						

SCALE: 1"=30'
 SIZE: 22"x34"
 PROJECT#: AZENE1917-06

PROJECT
 BLUEBIRD SOLAR
 HARRISON COUNTY, CYNTHIANA, KENTUCKY
 TITLE
 TYPICAL LANDSCAPE SEGMENT PLANTING

SHEET
 LS02.03
 REV
 2

LANDSCAPE LEGEND

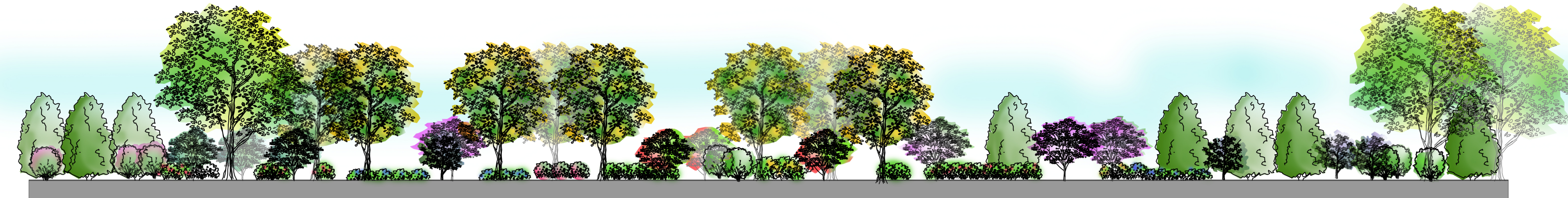
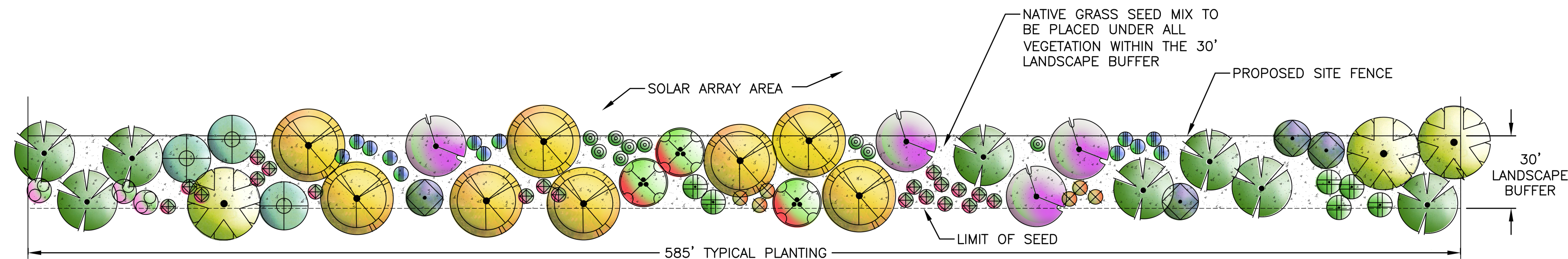
SYMBOL BOTANICAL NAME
 COMMON NAME

- ACER SACCHARINUM / SILVER MAPLE
- AMELANCHIER ARBOREA / DOWNY SERVICEBERRY
- CERCIS CANADENSIS / REDBUD
- CORNUS AMOMUM / SILKY DOGWOOD
- ILEX OPACA / AMERICAN HOLLY
- JUNIPERUS VIRGINIANA / EASTERN RED CEDAR
- JUGLANS NIGRA / BLACK WALNUT
- MALUS IOENSIS / PRAIRIE CRABAPPLE
- PINUS ECHINATA / SHORLEAF PINE
- PRUNUS AMERICANA / AMERICAN PLUM
- QUERCUS PALUSTRIS / PIN OAK

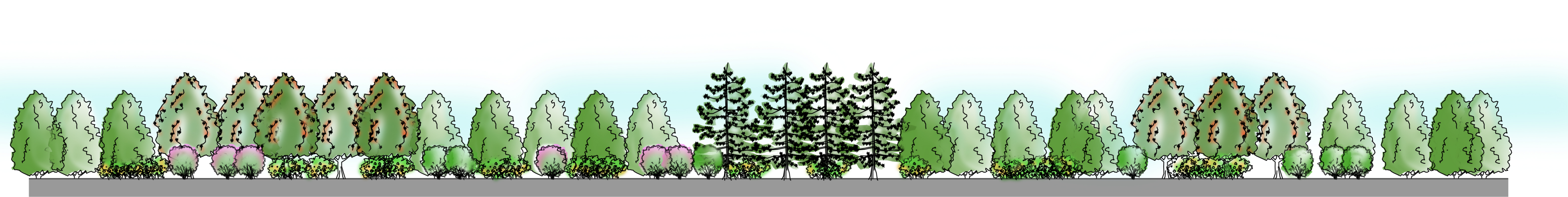
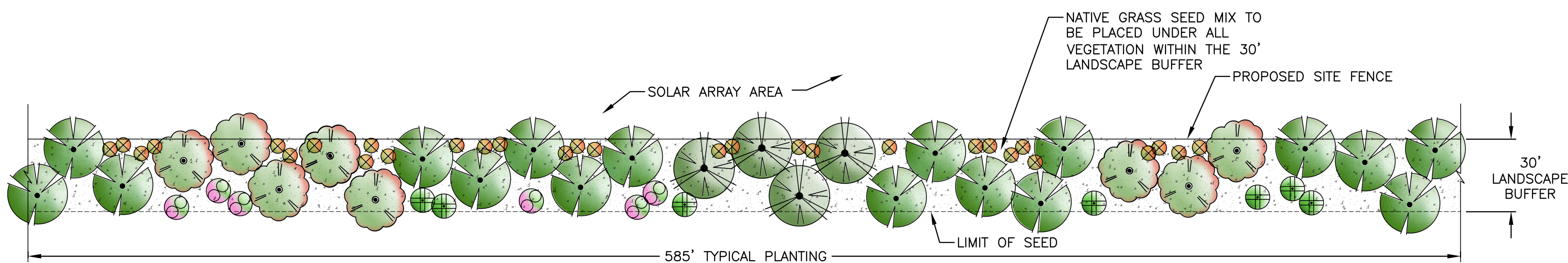
- CORYLUS AMERICANA / AMERICAN HAZELNUT
- GAYLUSSACIA BACCATA / BLACK HUCKLEBERRY
- HYDRANGEA ARBORESCENS / WILD HYDRANGEA
- RUBUS OCCIDENTALIS / BLACK RASPBERRY
- SYMPHORICARPOS ORBICULATUS / CORALBERRY
- VIBURNUM DENTATUM / SOUTHERN VIBURNUM

NATIVE GRASS/POLLINATOR SEED MIX

- BOTANICAL NAME / COMMON NAME
- ASTER LAEVIS / SMOOTH ASTER
 - BAPTISIA AUSTRALIS / BLUE FALSE INDIGO
 - BOUTELOUA CURTIPENDULA / SIDE OATS GRAMA
 - CASSIA FASCICULATA / PARTRIDGE PEA
 - COREOPSIS LANCEOLATA / LANCE LEAVED COREOPSIS
 - DALEA CANDIDA / WHITE PRAIRIE CLOVER
 - DALEA PURPUREA / PURPLE PRAIRIE CLOVER
 - ERYNGIUM YUCCIFOLIUM / RATTLESNAKE MASTER
 - GAILLARDIA PULCHELLA / INDIAN BLANKET
 - HELIOPSIS HELIANTHOIDES / FALSE SUNFLOWER
 - LIATRIS SQUARROSA / BLAZING STAR
 - MONARDA FISTULOSA / BERGAMOT
 - PANICUM VIRGATUM / SWITCHGRASS
 - PARTHENIUM INTEGRIFOLIUM / WILD QUININE
 - RATIBIDA PINNATA / GREYHEADED CONEFLOWER
 - RUDBECKIA HIRTA / BLACKEYED SUSAN
 - SCHIZACHYRIUM SCOPARIUM / LITTLE BLUESTEM
 - SOLIDAGO RIGIDA / RIGID GOLDENROD
 - SOLIDAGO NEMORALIS / GRAY GOLDENROD
 - SPOROBOLUS COMPOSITUS / TALL DROPSEED
 - TRIDENS FLAVUS / PURPLE TOP

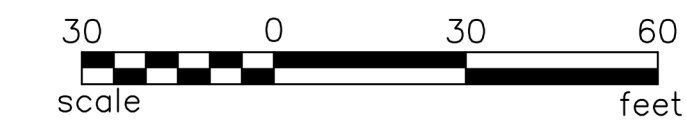


SEGMENT 3



SEGMENT 4





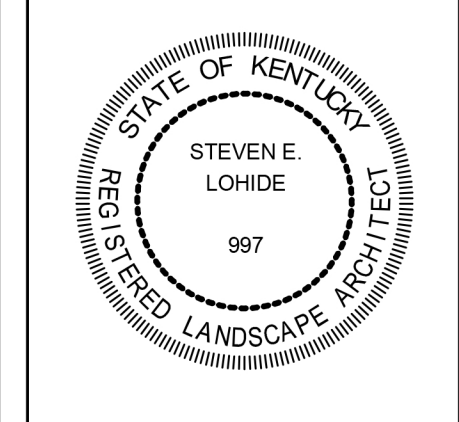
ENGINEER



DEVELOPER



CONTRACTOR

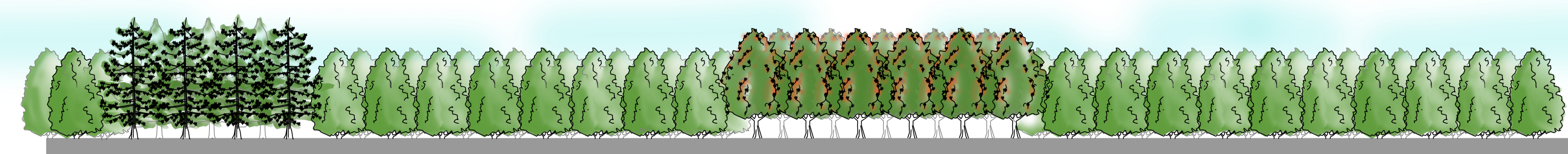
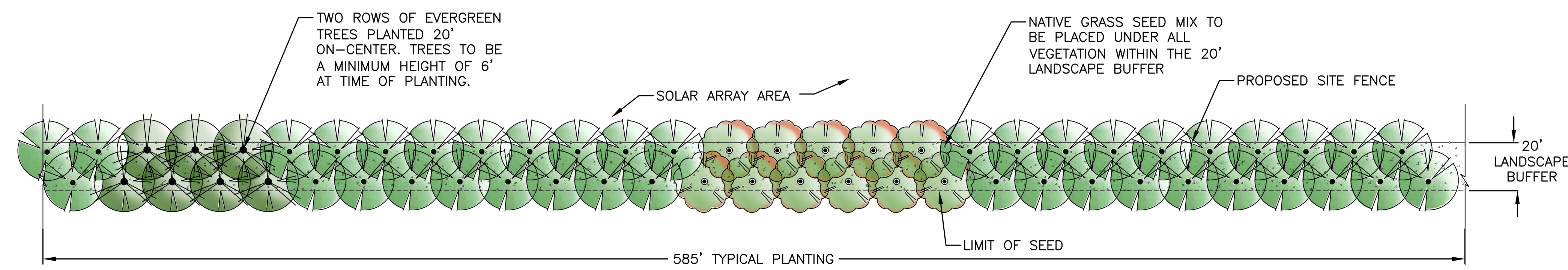


LANDSCAPE LEGEND

SYMBOL	BOTANICAL NAME	COMMON NAME
	ILEX OPACA	AMERICAN HOLLY
	JUNIPERUS VIRGINIANA	EASTERN RED CEDAR
	PINUS ECHINATA	SHORTLEAF PINE

NATIVE GRASS/POLLINATOR SEED MIX
BOTANICAL NAME / COMMON NAME

- ASTER LAEVIS / SMOOTH ASTER
- BAPTISIA AUSTRALIS / BLUE FALSE INDIGO
- BOUTELOUA CURTIPENDULA / SIDE OATS GRAMA
- CASSIA FASCICULATA / PARTRIDGE PEA
- COREOPSIS LANCEOLATA / LANCE LEAVED COREOPSIS
- DALEA CANDIDA / WHITE PRAIRIE CLOVER
- DALEA PURPUREA / PURPLE PRAIRIE CLOVER
- ERYNGIUM YUCCIFOLIUM / RATTLESNAKE MASTER
- GAILLARDIA PULCHELLA / INDIAN BLANKET
- HELIOPSIS HELIANTHOIDES / FALSE SUNFLOWER
- LIATRIS SQUARROSA / BLAZING STAR
- MONARDA FISTULOSA / BERGAMOT
- PANICUM VIRGATUM / SWITCHGRASS
- PARTHENIUM INTEGRIFOLIUM / WILD QUININE
- RATIBIDA PINNATA / GREYHEADED CONEFLOWER
- RUDBECKIA HIRTA / BLACKEYED SUSAN
- SCHIZACHYRIUM SCOPARIUM / LITTLE BLUESTEM
- SOLIDAGO RIGIDA / RIGID GOLDENROD
- SOLIDAGO NEMORALIS / GRAY GOLDENROD
- SPOROBOLUS COMPOSITUS / TALL DROPSEED
- TRIDENS FLAVUS / PURPLE TOP



COUNTY OPTION

REV	DATE	DESCRIPTION	REVISIONS		
			DRW	CK	APV

SCALE: 1"=30'
 SIZE: 22"x34"
 PROJECT#: AZENE1917-06

PROJECT: BLUEBIRD SOLAR
 HARRISON COUNTY, CYNTHIANA, KENTUCKY

TITLE: TYPICAL LANDSCAPE SEGMENT PLANTING

