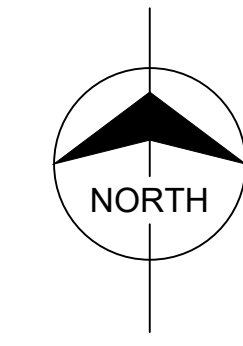


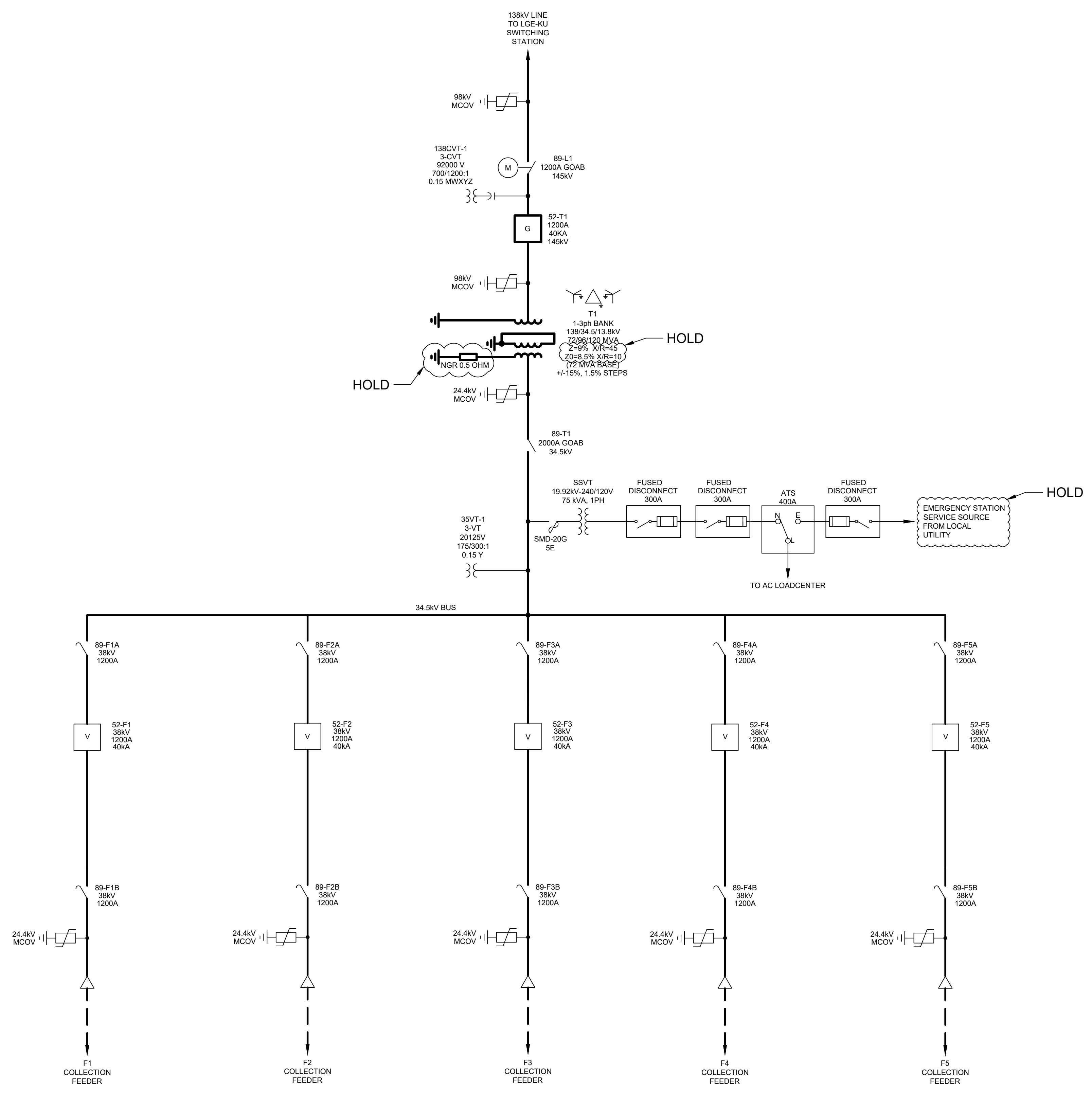
# **Attachment R**

## Single-Line Diagram



Scale For Microfilming

Inches



- LEGEND**
- MOTOR OPERATED DISCONNECT SWITCH
  - GROUP OPERATED DISCONNECT SWITCH
  - STICK OPERATED DISCONNECT SWITCH
  - POWER TRANSFORMER
  - GAS CIRCUIT BREAKER
  - VACUUM CIRCUIT BREAKER
  - 34.5kV POWER FUSE
  - SURGE ARRESTOR
  - UNDERGROUND CABLE TERMINATION
  - POTENTIAL TRANSFORMER
  - CAPACITOR VOLTAGE TRANSFORMER

no.	date	by	ckd	description
-----	------	----	-----	-------------

**PRELIMINARY - NOT FOR CONSTRUCTION**



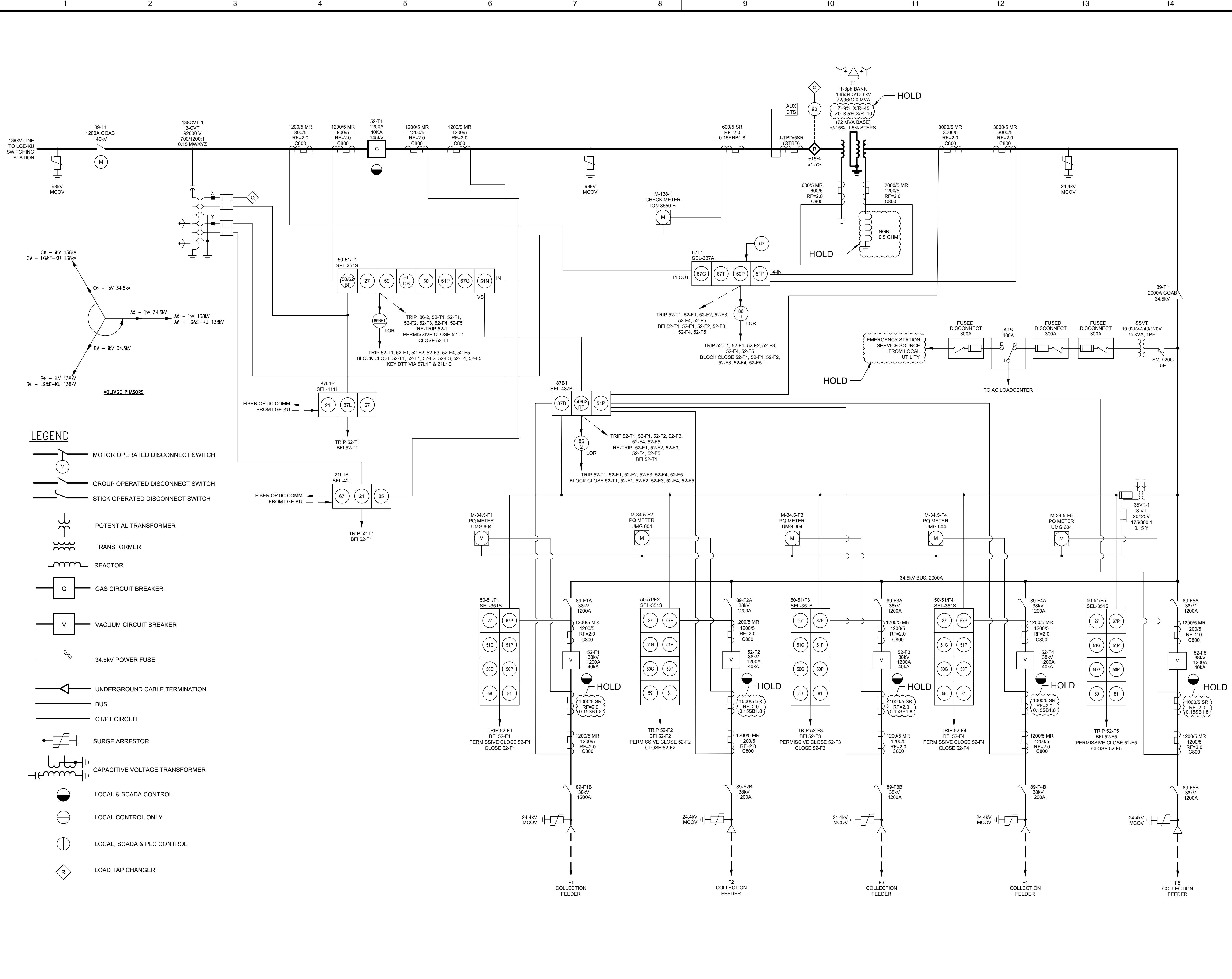
200 W ADAMS ST. SUITE 2700  
CHICAGO, IL 60606  
312-223-0920  
Burns & McDonnell Engineering Co., Inc.

date	08/13/21	detailed	A.GALLEGOS
designed	A.GALLEGOS	checked	J.HAY

ibV ENERGY PARTNERS  
984.238.4284  
JEFFREY CHANG  
jeffrey.chang@ibvenergy.com  
777 BRICKELL AVE.  
SUITE 500, MIAMI, FL 33131

RHUDES CREEK SOLAR  
HARDIN COUNTY, KY  
UNITED STATES

EQUIPMENT SINGLE LINE DIAGRAM 138/34.5kV SOLAR COLLECTOR SUBSTATION	
project	133582
contract	XXX
drawing	RC-SL-001
sheet	1 of 1 sheets
file	RC-SL-001.DWG



**LEGEND**

- MOTOR OPERATED DISCONNECT SWITCH
- GROUP OPERATED DISCONNECT SWITCH
- STICK OPERATED DISCONNECT SWITCH
- POTENTIAL TRANSFORMER
- TRANSFORMER
- REACTOR
- GAS CIRCUIT BREAKER
- VACUUM CIRCUIT BREAKER
- 34.5KV POWER FUSE
- UNDERGROUND CABLE TERMINATION
- BUS
- CT/PT CIRCUIT
- SURGE ARRESTOR
- CAPACITIVE VOLTAGE TRANSFORMER
- LOCAL & SCADA CONTROL
- LOCAL CONTROL ONLY
- LOCAL, SCADA & PLC CONTROL
- LOAD TAP CHANGER

Scale For Microlining  
Millimeters  
Inches

no.	date	by	ckd	description
<b>PRELIMINARY - NOT FOR CONSTRUCTION</b>				
200 W ADAMS ST. SUITE 2700 CHICAGO, IL 60606 312-223-0920 Burns & McDonnell Engineering Co., Inc.				
date	08/13/21	detailed	B.KEEGAN	
designed	B.KEEGAN	checked	K.STEFANSKI	
ibV ENERGY PARTNERS 984.238.4284 JEFFREY CHANG jeffrey.chang@ibvenergy.com 777 BRICKELL AVE. SUITE 500, MIAMI, FL 33131				
RHODES CREEK SOLAR HARDIN COUNTY, KY UNITED STATES				
<b>RELAY &amp; METERING SINGLE LINE DIAGRAM</b> <b>138/34.5KV SOLAR COLLECTOR SUBSTATION</b>				
project	133582	contract	XXX	
drawing	<b>RC-SL-002</b>		rev.	<b>A</b>
sheet	1	of	1	sheets
file RC-SL-002.DWG				