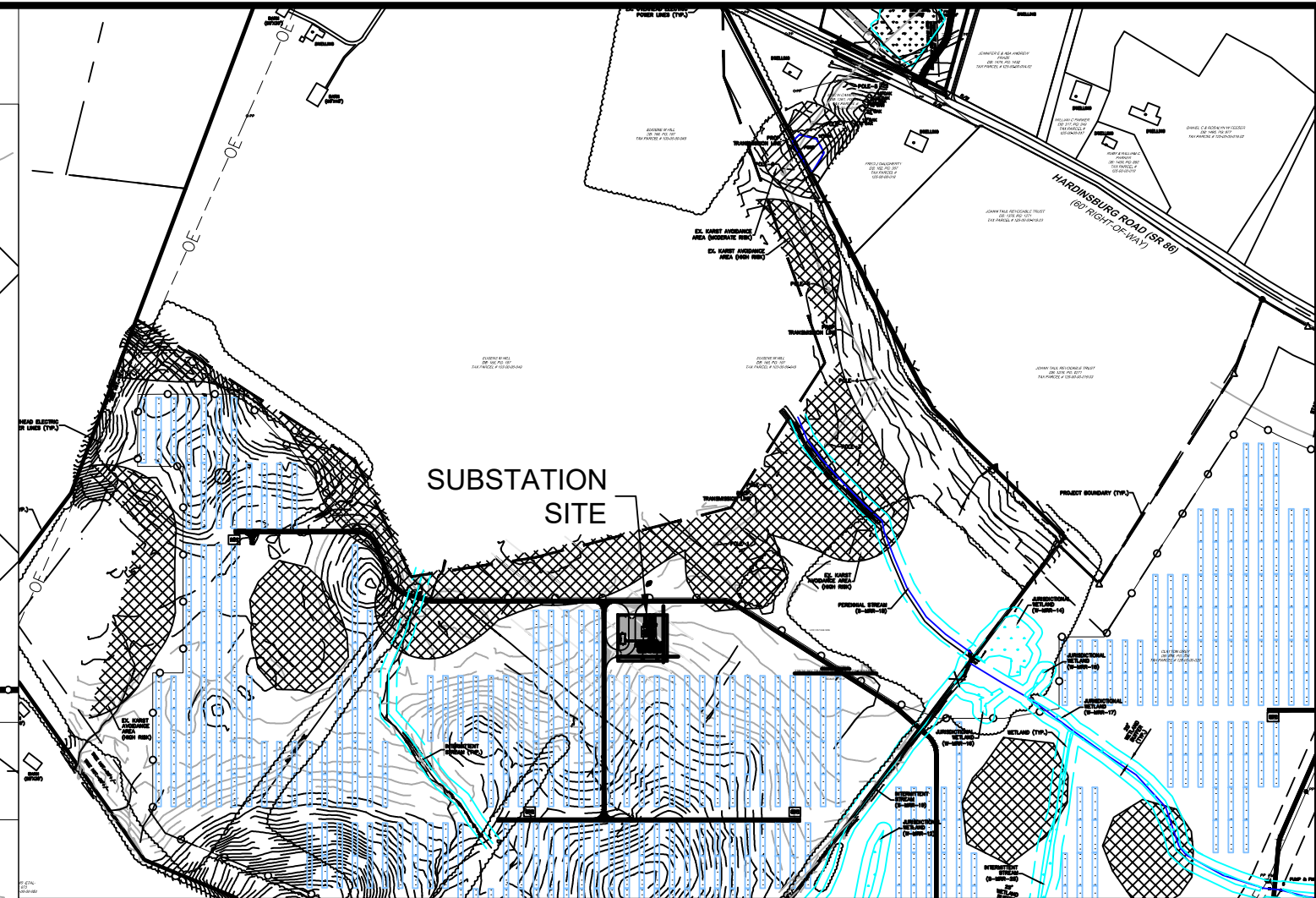
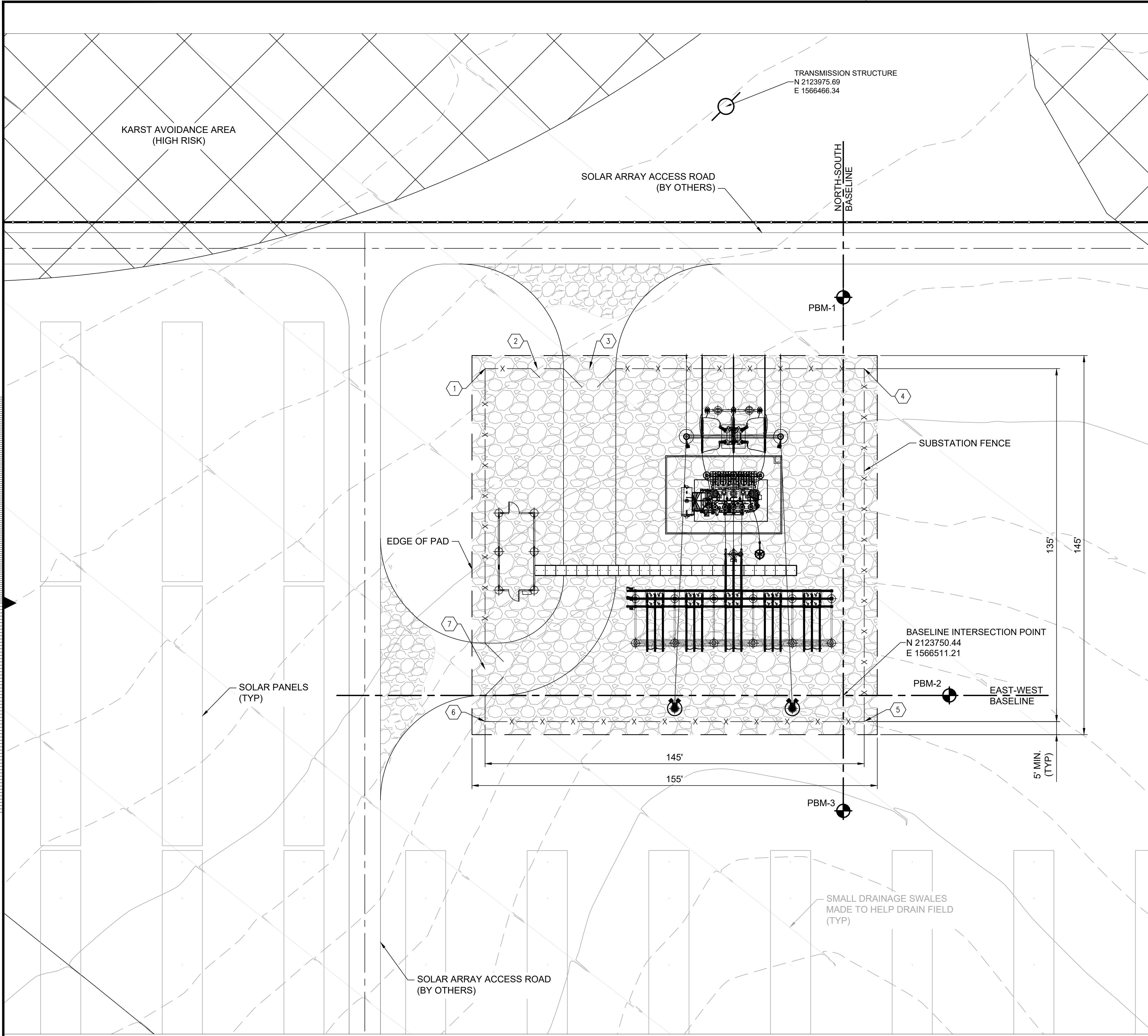


Attachment Q

Project Substation Site Plan

1 2 3 4 5 6 7 8 9 10 11 12 13 14

no. | date | by | ckd | description



VICINITY MAP

NOTES:

- COORDINATES SHOWN ARE IN NAD83 KENTUCKY STATE PLANES, SOUTH ZONE, US FOOT. NAD83 & NAVD88 HORIZONTAL AND VERTICAL DATA, RESPECTIVELY.
- CONTRACTOR SHALL CONFIRM PROPERTY BOUNDARY, HORIZONTAL AND VERTICAL CONTROL PRIOR TO THE START OF CONSTRUCTION. CONTACT ENGINEER IF CONDITIONS VARY FROM INFORMATION SHOWN.
- THE BASELINES SHALL BE ESTABLISHED AS SHOWN, AND THE EAST-WEST BASELINE SHALL BE PERPENDICULAR TO THE NORTH-SOUTH BASELINE.
- CONTRACTOR SHALL FURNISH AND INSTALL (4) BERNSTEN MODEL G-1 MONUMENTS 48" LONG OR ENGINEER APPROVED EQUAL. MONUMENTS SHALL BE CAPPED AND MARKED WITH AN "X". BENCHMARK ELEVATIONS SHALL BE WITHIN 0.1 FEET OF FINAL OR EXISTING GRADE. BENCHMARK ELEVATIONS SHALL BE RECORDED AND SUBMITTED TO OWNER.

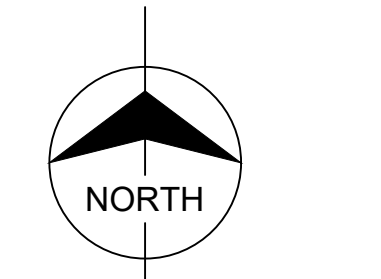
LEGEND:

- EX. MAJOR CONTOUR
- - - EX. MINOR CONTOUR
- EDGE OF PAD/ROCK
- - - BASELINE
- x - x - x - SUBSTATION FENCE
- ▨ CRUSHED ROCK SURFACING
- ⊕ BENCHMARK

| PERMANENT BENCHMARK LOCATIONS | | | |
|-------------------------------|------------|------------|-----------|
| POINT # | NORTHING | EASTING | ELEVATION |
| PBM-1 | 2123902.69 | 1566511.21 | * |
| PBM-2 | 2123750.44 | 1566551.78 | * |
| PBM-3 | 2123706.29 | 1566511.21 | * |

* TO BE DETERMINED BY CONTRACTOR AND REPORTED TO OWNER

| POINT TABLE | | | |
|-------------|------------|------------|------------------------|
| POINT # | NORTHING | EASTING | DESCRIPTION |
| ① | 2123875.44 | 1566374.21 | |
| ② | 2123875.44 | 1566394.21 | CENTER 5'-0" MAIN GATE |
| ③ | 2123875.44 | 1566414.16 | CENTER 20' SWING GATE |
| ④ | 2123875.44 | 1566519.21 | |
| ⑤ | 2123740.44 | 1566519.21 | |
| ⑥ | 2123740.44 | 1566374.21 | |
| ⑦ | 2123760.50 | 1566374.21 | CENTER 20' SWING GATE |



PRELIMINARY - NOT FOR CONSTRUCTION



REFERENCES:

- RC-GR-001 GRADING PLAN
- RC-GR-002 GRADING DETAILS
- RC-GR-003 EROSION CONTROL PLAN
- RC-GR-004 EROSION CONTROL DETAILS
- RC-FD-001 FOUNDATION PLAN

A
B
C
D
E
F
G
H
I
J

Scale For Microfilming
Millimeters
Inches

**BURNS
MCDONNELL**
200 W ADAMS ST. SUITE 2700
CHICAGO, IL 60606
312-223-0920
Burns & McDonnell Engineering Co., Inc.

| | |
|-----------------------|-----------------------|
| date 08/13/21 | detailed K.HICKERT |
| designed K.HICKERT | checked R.KUHNS |

ibV ENERGY PARTNERS
984.238.4284
JEFFREY CHANG
jeffrey.chang@ibvenergy.com
777 BRICKELL AVE.
SUITE 500, MIAMI, FL 33131

RHUDES CREEK SOLAR
HARDIN COUNTY, KY
UNITED STATES

ibV energy partners
an ibv company

SITE PLAN
COLLECTOR SUBSTATION

| | |
|-------------------|-----------------|
| project 133582 | contract XXX |
|-------------------|-----------------|

drawing
RC-SP-001 — **A**
sheet 1 of 1 sheets
file RC-SP-001.DWG