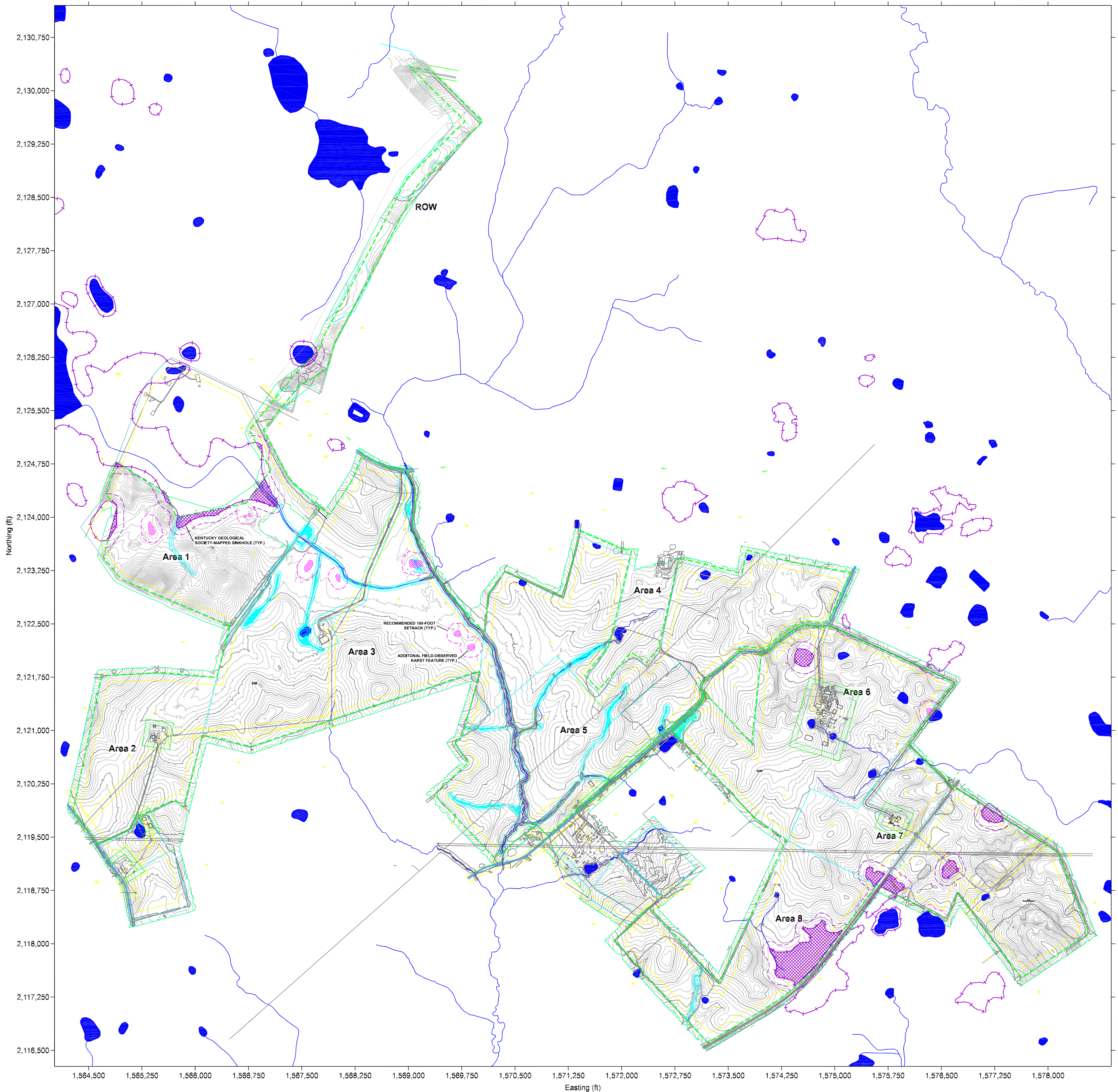
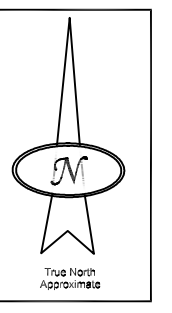


Attachment 15

Karst Assessment Map



Legend

- - - Project Boundary
- NHD Water Bodies
- ~ NHD Flow Lines
- Kentucky Geological Society-Mapped Sinkholes within Project Boundary
- Additional Field-Observed Karst Features within Project Boundary
- Recommended 100-Foot Setback (KGS-Mapped Sinkholes)
- Recommended 100-Foot Setback (Field-Observed Karst Features)

Notes

Geophysical survey conducted February 8-12, 2021 using a GF Instruments ARES II electrical resistivity meter with active multi-electrode cable sections and Geometrics Geode 24-channel seismograph.

Real-time positioning of data using fully integrated Trimble Geo-7X global positioning system set to NAD 1983 US State Plane (Kentucky Single Zone) coordinate system in US Survey feet.

Locations are approximate.

GIS Overlays:
Topography
Provided by TRC Companies on 4/7/2021

Water Bodies & Stream Flow Lines
USGS NHD for Hydrologic Unit 8 - 05110001, 2021

Sinkholes
Paylor, R.L., Florea, L., Caudill, M., & Currens, J. C. (2003). A GIS Sinkhole Coverage for the Karst Areas of Kentucky. Kentucky Speleological Survey, Inc., 228 Mining and Minerals Resources Building, Lexington, KY.

DRN	AXB	2/18/21
DES	AXB	2/18/21
CHK	PAH	2/23/21
REV	MLT	4/16/21
PROJ. MGR.	AXB	2/23/21
SCALE:	1 in = 750 ft	
SOURCE:	USGS High Resolution Orthoimagery 2012	
PREPARED FOR:		

PROJECT:	Geophysical Investigation Rhodes Creek Solar Project Cecilia, Kentucky
DRAWING NO.:	Karst Hazard Map
PROJECT NO.:	1285-10736
SHEET TITLE:	DWG10736F2rev