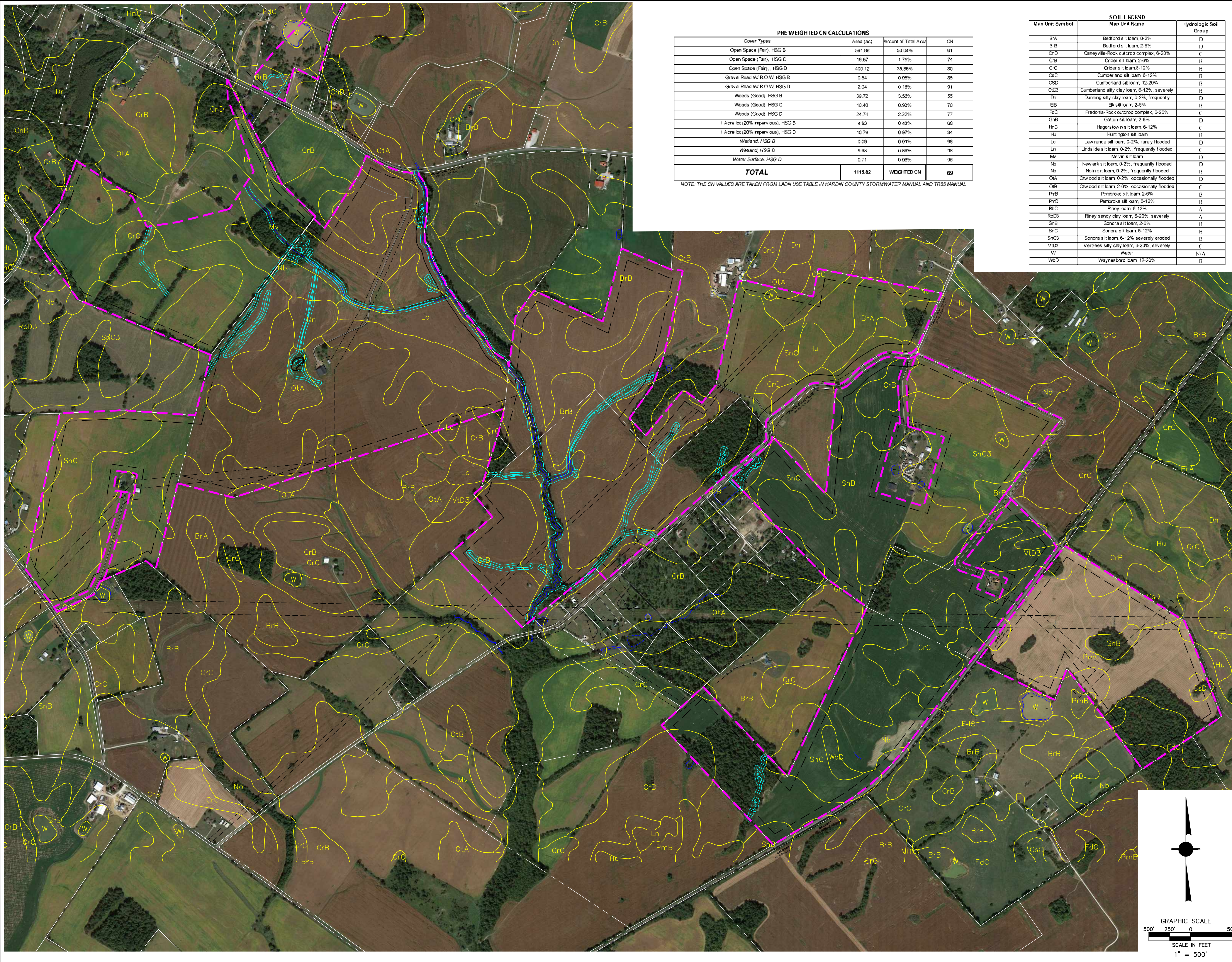


Attachment 12

NRCS Runoff Curve Number Analysis



PRE WEIGHTED CN CALCULATIONS

| Cover Types | Area (ac) | Percent of Total Area | CN |
|------------------------------------|----------------|-----------------------|-----------|
| Open Space (Fair), HSG B | 591.88 | 53.04% | 61 |
| Open Space (Fair), HSG C | 19.67 | 1.76% | 74 |
| Open Space (Fair), HSG D | 400.12 | 35.86% | 80 |
| Gravel Road W/ R.O.W, HSG B | 0.84 | 0.08% | 65 |
| Gravel Road W/ R.O.W, HSG D | 2.04 | 0.18% | 91 |
| Woods (Good), HSG B | 39.72 | 3.54% | 55 |
| Woods (Good), HSG C | 10.40 | 0.93% | 70 |
| Woods (Good), HSG D | 24.74 | 2.22% | 77 |
| 1 Acre lot (20% impervious), HSG B | 4.53 | 0.41% | 69 |
| 1 Acre lot (20% impervious), HSG D | 10.79 | 0.97% | 84 |
| Wetland, HSG B | 0.09 | 0.01% | 99 |
| Wetland, HSG D | 9.99 | 0.89% | 99 |
| Water Surface, HSG D | 0.71 | 0.06% | 99 |
| TOTAL | 1115.82 | WEIGHTED CN | 69 |

NOTE: THE CN VALUES ARE TAKEN FROM LADN USE TABLE IN HARDIN COUNTY STORMWATER MANUAL AND TRGS MANUAL.

SOIL LEGEND

| Map Unit Symbol | Map Unit Name | Hydrologic Soil Group |
|-----------------|--|-----------------------|
| BrA | Bedford silt loam, 0-2% | D |
| BrB | Bedford silt loam, 2-6% | D |
| CnD | Caneyville-Rock outcrop complex, 6-20% | C |
| CrB | Crider silt loam, 2-6% | B |
| CnC | Crider silt loam, 6-12% | B |
| CsC | Cumberland silt loam, 6-12% | B |
| CsD | Cumberland silt loam, 12-20% | B |
| CtC3 | Cumberland silty clay loam, 6-12%, severely | B |
| Dn | Dunning silty clay loam, 0-2%, frequently | D |
| Dk | Dk silt loam, 2-6% | B |
| FdC | Fredonia-Rock outcrop complex, 6-20% | C |
| GnB | Garton silt loam, 2-6% | D |
| HnC | Hagerstown silt loam, 6-12% | C |
| Hu | Huntington silt loam | B |
| Lc | Lawrence silt loam, 0-2%, rarely flooded | D |
| Ln | Lindsie silt loam, 0-2%, frequently flooded | C |
| Mv | Melvin silt loam | D |
| Nb | Newark silt loam, 0-2%, frequently flooded | D |
| No | Nolin silt loam, 0-2%, frequently flooded | B |
| OtA | Ottawa silt loam, 0-2%, occasionally flooded | D |
| CrB | Ottawa silt loam, 2-6%, occasionally flooded | C |
| PmB | Pembroke silt loam, 2-6% | B |
| PmC | Pembroke silt loam, 6-12% | B |
| RbC | Riney loam, 6-12% | A |
| RcD3 | Riney sandy clay loam, 6-20%, severely | A |
| SnB | Sonora silt loam, 2-6% | B |
| SnC | Sonora silt loam, 6-12% | B |
| SnC3 | Sonora silt loam, 6-12%, severely eroded | B |
| SnD | Sonora silt loam, 6-12% | B |
| VtD3 | Ventres silty clay loam, 6-20%, severely | C |
| W | Water | N/A |
| WbD | Waynesboro loam, 12-20% | B |

LEGEND PRE-DEVELOPMENT DRAINAGE AREA FEATURES

- INDEX CONTOUR LINE
- INTERMEDIATE CONTOUR LINE
- PROPERTY BOUNDARY LINE
- PROJECT BOUNDARY LINE
- SOIL TYPE SYMBOL
- WETLAND AREA
- SINKHOLE IN KARST AREA

| NO. | REVISION | DATE |
|-----|--------------------------------|------------|
| 2 | PRELIMINARY 90% CUP SUBMISSION | 05/14/2021 |
| 1 | PRELIMINARY CUP SUBMISSION | 02/23/2021 |

Property Owners:
 EUGENE M & DOROTHY J HILL
 CLAYTON & GERALDINE GREY
 KERBY ADAM GREY
 CLAYTON GREY
 CLAYTON GREY LIVING TRUST
 CHARLES D & MARY A PETERSON

TRC TRC Engineers, Inc.
 650 Suffolk Street
 Lowell, MA 01854
 Tel: 978-970-5600
 www.trcsolutions.com

ibV energypartners
 an ibv energy company
 Applicant
ibV ENERGY PARTNERS
 984.238.4284
 JEFFREY CHANG
 JEFFREY.CHANG@IBVENERGY.COM
 777 BRICKELL AVE
 SUITE 500
 MIAMI, FL 33131

RHODES CREEK SOLAR PROJECT
 HARDIN COUNTY, KY

DRAWING TITLE:
PRE-DEVELOPMENT CURVE NUMBER EVALUATION

ISSUE FOR PERMITTING ONLY. NOT INTENDED FOR CONSTRUCTION OR BIDDING PURPOSES.

SCALE: 1" = 500'
 DATE: 05/14/2021
 DRAWN BY: TRC
 CHECKED BY: DTB
 PROJECT: 363193
 DRAWING NO.: 1 OF 2

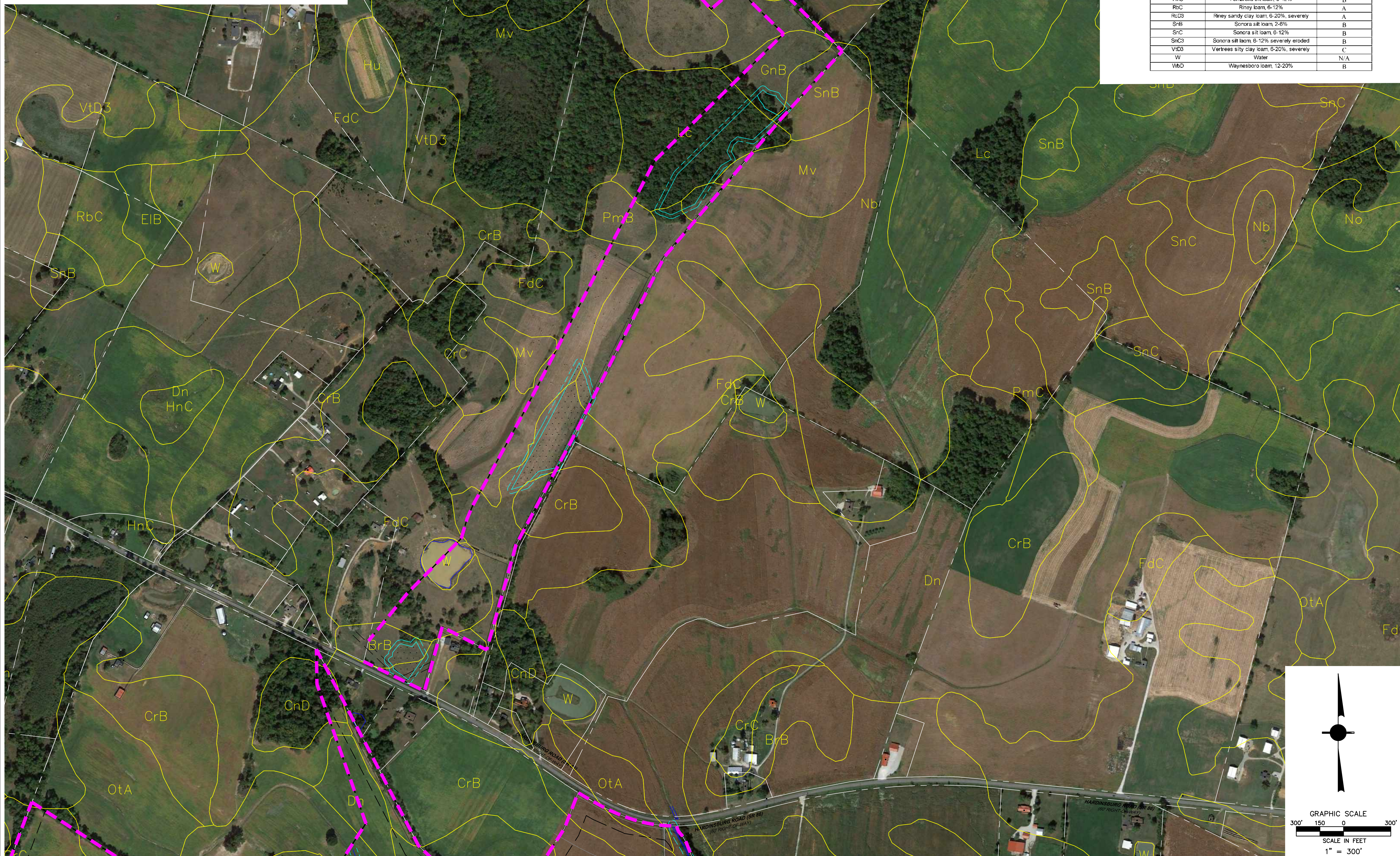
H:\Work in Progress\Solar\ibV Energy\Rhodes Creek Solar - Hardin County\K\Y\CAD\Drawings\RC-01_x1TB.dwg H:\Work in Progress\Solar\ibV Energy\Rhodes Creek Solar - Hardin County\K\Y\CAD\Drawings\RC-02_SoL INFO.dwg H:\Work in Progress\Solar\ibV Energy\Rhodes Creek Solar - Hardin County\K\Y\CAD\Drawings\RC-02_x1E.dwg L:\Users\SS\Comshare\Site_GIS_Topo_Export.dwg H:\Work in Progress\Solar\ibV Energy\Rhodes Creek Solar - Hardin County\K\Y\CAD\Drawings\Aerial.dwg

| PRE WEIGHTED CN CALCULATIONS | | | |
|------------------------------------|----------------|-----------------------|-----------|
| Cover Types | Area (ac) | Percent of Total Area | CN |
| Open Space (Fair), HSG B | 591.88 | 53.04% | 61 |
| Open Space (Fair), HSG C | 19.67 | 1.76% | 74 |
| Open Space (Fair), HSG D | 400.12 | 35.86% | 80 |
| Gravel Road W R O W, HSG B | 0.94 | 0.08% | 95 |
| Gravel Road W R O W, HSG D | 2.04 | 0.18% | 91 |
| Woods (Good), HSG B | 39.72 | 3.56% | 55 |
| Woods (Good), HSG C | 10.40 | 0.93% | 70 |
| Woods (Good), HSG D | 24.74 | 2.22% | 77 |
| 1 Acre lot (20% impervious), HSG B | 4.83 | 0.43% | 68 |
| 1 Acre lot (20% impervious), HSG D | 10.79 | 0.97% | 94 |
| Wetland, HSG B | 0.09 | 0.01% | 99 |
| Wetland, HSG D | 9.98 | 0.89% | 99 |
| Water Surface, HSG D | 0.71 | 0.06% | 96 |
| TOTAL | 1115.82 | WEIGHTED CN | 69 |

NOTE: THE CN VALUES ARE TAKEN FROM LADN USE TABLE IN HARDIN COUNTY STORMWATER MANUAL AND TR55 MANUAL

| Map Unit Symbol | SOIL LEGEND Map Unit Name | Hydrologic Soil Group |
|-----------------|---|-----------------------|
| B/A | Bedford silt loam, 0-2% | D |
| B/B | Bedford silt loam, 2-6% | D |
| CrD | Caneyville-Rock outcrop complex, 6-20% | C |
| CrB | Order silt loam, 2-6% | B |
| CrC | Order silt loam, 6-12% | B |
| CrC | Cumberland silt loam, 6-12% | B |
| CSD | Cumberland silt loam, 12-20% | B |
| C/C3 | Cumberland silt loam, 6-12%, severely | B |
| Dn | Dunning silt loam, 0-2%, frequently | D |
| EB | Ek silt loam, 2-6% | B |
| FdC | Fredonia-Rock outcrop complex, 6-20% | C |
| GnB | Gallon silt loam, 2-6% | D |
| HnC | Hagerstown silt loam, 6-12% | C |
| Hu | Huntington silt loam | B |
| Lc | Lawrence silt loam, 0-2%, rarely flooded | D |
| Ln | Lindsdale silt loam, 0-2%, frequently flooded | C |
| Mv | Melvin silt loam | D |
| Nb | Newark silt loam, 0-2%, frequently flooded | D |
| No | Nolin silt loam, 0-2%, frequently flooded | B |
| O/A | Owens silt loam, 0-2%, occasionally flooded | D |
| OB | Owens silt loam, 2-6%, occasionally flooded | C |
| H/B | Pembroke silt loam, 2-6% | B |
| HnC | Pembroke silt loam, 6-12% | B |
| R/C | Riley loam, 6-12% | A |
| R/C3 | Riley sandy clay loam, 6-20%, severely | A |
| SnB | Sonora silt loam, 2-6% | B |
| SnC | Sonora silt loam, 6-12% | B |
| SnC3 | Sonora silt loam, 6-12%, severely eroded | B |
| V/D3 | Vertrees silt loam, 6-20%, severely | C |
| W | Water | N/A |
| WbD | Waynesboro loam, 12-20% | B |

| LEGEND PRE-DEVELOPMENT DRAINAGE AREA FEATURES | |
|---|---------------------------|
| --- | INDEX CONTOUR LINE |
| --- | INTERMEDIATE CONTOUR LINE |
| --- | PROPERTY BOUNDARY LINE |
| --- | PROJECT BOUNDARY LINE |
| --- | SOIL TYPE SYMBOL |
| --- | WETLAND AREA |
| --- | SINKHOLE IN KARST AREA |



| NO. | REVISION | DATE |
|-----|--------------------------------|------------|
| 2 | PRELIMINARY 90% CUP SUBMISSION | 05/14/2021 |
| 1 | PRELIMINARY CUP SUBMISSION | 02/23/2021 |

Property Owners:
 EUGENE M & DOROTHY J HILL
 CLAYTON & GERALDINE GREY
 KERBY ADAM GREY
 CLAYTON GREY
 CLAYTON GREY LIVING TRUST
 CHARLES D & MARY A PETERSON

TRC TRC Engineers, Inc.
 650 Suffolk Street
 Lowell, MA 01854
 Tel: 978-970-5600
 www.trcsolutions.com

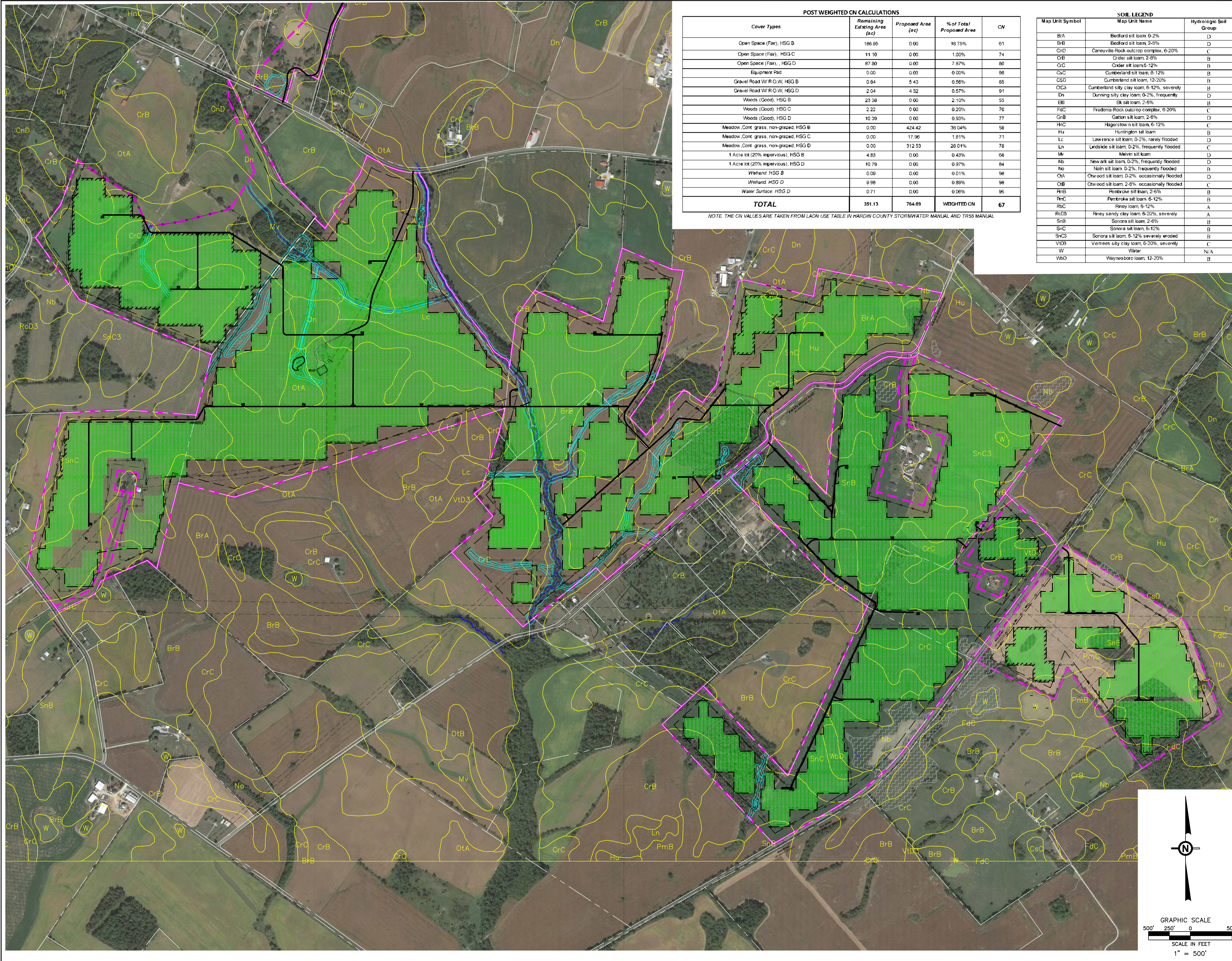
ibV energypartners
 an ibv energy company
 Applicant
ibV ENERGY PARTNERS
 984.238.4284
 JEFFREY.CHANG@IBVENERGY.COM
 777 BRICKELL AVE
 SUITE 500
 MIAMI, FL 33131

RHODES CREEK SOLAR PROJECT
 HARDIN COUNTY, KY

DRAWING TITLE:
PRE-DEVELOPMENT CURVE NUMBER EVALUATION

| | | |
|---|--------------|------------|
| ISSUE FOR PERMITTING ONLY. NOT INTENDED FOR CONSTRUCTION OR BIDDING PURPOSES. | SCALE: | 1" = 300' |
| | DATE: | 05/14/2021 |
| | DRAWN BY: | TRC |
| | CHECKED BY: | DTB |
| | PROJECT: | 363193 |
| | DRAWING NO.: | 2 OF 2 |

Small text at the bottom of the page containing project details and file paths.



POST WEIGHTED CN CALCULATIONS

| Cover Types | Remaining Existing Area (ac) | Proposed Area (ac) | % of Total Proposed Area | CN |
|--|------------------------------|--------------------|--------------------------|-----------|
| Open Space (Fair), HSG B | 166.95 | 0.00 | 16.76% | 61 |
| Open Space (Fair), HSG C | 11.10 | 0.00 | 1.00% | 74 |
| Open Space (Fair), HSG D | 87.90 | 0.00 | 7.87% | 80 |
| Equipment Pad | 0.00 | 0.00 | 0.00% | 98 |
| Gravel Road W/ R.O.W, HSG B | 0.84 | 5.43 | 0.56% | 85 |
| Gravel Road W/ R.O.W, HSG D | 2.04 | 4.32 | 0.57% | 91 |
| Woods (Good), HSG B | 23.38 | 0.00 | 2.10% | 55 |
| Woods (Good), HSG C | 2.22 | 0.00 | 0.20% | 70 |
| Woods (Good), HSG D | 10.39 | 0.00 | 0.93% | 77 |
| Meadow, Cont. grass, non-grazed, HSG B | 0.00 | 424.42 | 39.04% | 58 |
| Meadow, Cont. grass, non-grazed, HSG C | 0.00 | 17.96 | 1.61% | 71 |
| Meadow, Cont. grass, non-grazed, HSG D | 0.00 | 312.53 | 28.01% | 78 |
| 1 Acre lot (20% impervious), HSG B | 4.83 | 0.00 | 0.43% | 66 |
| 1 Acre lot (20% impervious), HSG D | 10.79 | 0.00 | 0.97% | 84 |
| Wetland, HSG B | 0.09 | 0.00 | 0.01% | 98 |
| Wetland, HSG D | 9.98 | 0.00 | 0.89% | 98 |
| Water Surface, HSG D | 0.71 | 0.00 | 0.06% | 95 |
| TOTAL | 351.13 | 764.89 | WEIGHTED CN | 67 |

NOTE: THE CN VALUES ARE TAKEN FROM LADN USE TABLE IN HARDIN COUNTY STORMWATER MANUAL AND TR55 MANUAL

SOIL LEGEND

| Map Unit Symbol | Map Unit Name | Hydrologic Soil Group |
|-----------------|--|-----------------------|
| BrA | Bedford silt loam, 0-2% | D |
| BrB | Bedford silt loam, 2-6% | D |
| CrD | Caneyville-Rock outcrop complex, 6-20% | C |
| CrB | Crider silt loam, 2-8% | B |
| CrC | Crider silt loam, 8-12% | B |
| CsC | Cumpleland silt loam, 8-12% | B |
| CsD | Cumpleland silt loam, 12-20% | B |
| CtC3 | Cumpleland silt loam, 6-12%, severely | B |
| Dn | Dunning silt loam, 0-2%, frequently | D |
| EiB | Eli silt loam, 2-6% | B |
| FdC | Fredonia-Rock outcrop complex, 8-20% | C |
| GnB | Gaston silt loam, 2-6% | D |
| HnC | Hagerstown silt loam, 6-12% | C |
| Hu | Huntington silt loam | B |
| Lc | Lawrence silt loam, 0-2%, rarely flooded | D |
| Ln | Lindsie silt loam, 0-2%, frequently flooded | C |
| Mv | Melvin silt loam | D |
| Nb | Newark silt loam, 0-2%, frequently flooded | D |
| Np | Nolin silt loam, 0-2%, frequently flooded | B |
| OnA | Ottawa silt loam, 0-2%, occasionally flooded | D |
| OnB | Ottawa silt loam, 2-6%, occasionally flooded | C |
| PmB | Pembroke silt loam, 2-6% | B |
| PmC | Pembroke silt loam, 6-12% | B |
| Rsc | Rinsy loam, 6-12% | A |
| ReD8 | Rinsy sandy clay loam, 8-20%, severely | A |
| SnB | Sonora silt loam, 2-6% | B |
| SnC | Sonora silt loam, 6-12% | B |
| SnC3 | Sonora silt loam, 8-12%, severely eroded | B |
| VtD3 | Ventress silt loam, 6-20%, severely | C |
| W | Water | N/A |
| WbD | Waynesboro loam, 12-20% | B |

LEGEND POST DEVELOPMENT DRAINAGE AREA FEATURES

- INDEX CONTOUR LINE
- INTERMEDIATE CONTOUR LINE
- PROPERTY BOUNDARY LINE
- PROJECT BOUNDARY LINE
- SOIL TYPE SYMBOL
- WETLAND AREA
- SINHOLE IN KARST AREA
- SOLAR ARRAY
- 25' WIDE EXTRA WATER QUALITY MEADOWLAND COVER BUFFER
- PROPOSED MEADOW LAND COVER

| NO. | REVISION | DATE |
|-----|--------------------------------|------------|
| 2 | PRELIMINARY 90% CUP SUBMISSION | 05/14/2021 |
| 1 | PRELIMINARY CUP SUBMISSION | 02/23/2021 |

Property Owners:
 EUGENE M & DOROTHY J HILL
 CLAYTON & GERALDINE GREY
 KERBY ADAM GREY
 CLAYTON GREY
 CLAYTON GREY LIVING TRUST
 CHARLES D & MARY A PETERSON

TRC TRC Engineers, Inc.
 650 Suffolk Street
 Lowell, MA 01854
 Tel: 978-970-5600
 www.trcsolutions.com

ibV energypartners
 an ibv energy company
ibV ENERGY PARTNERS
 984.238.4284
 JEFFREY CHANG
 JEFFREY.CHANG@IBVENERGY.COM
 777 BRICKELL AVE
 SUITE 500
 MIAMI, FL 33131

RHUDES CREEK SOLAR PROJECT
 HARDIN COUNTY, KY

DRAWING TITLE:
POST DEVELOPMENT CURVE NUMBER EVALUATION

| | | |
|---|--------------|------------|
| ISSUE FOR PERMITTING ONLY. NOT INTENDED FOR CONSTRUCTION OR BIDDING PURPOSES. | SCALE: | 1" = 500' |
| | DATE: | 05/14/2021 |
| | DRAWN BY: | TRC |
| | CHECKED BY: | DTB |
| | PROJECT: | 363193 |
| | DRAWING NO.: | 1 OF 2 |

H:\Work in Progress\Solar Sites\ibV Energy\Rhudes Creek Solar - Hardin County\KYY\CAD\Drawings\01_ArB.dwg, L:\Web\RC_02_SOL_INF.dwg, L:\Web\RC_02_AE.dwg, L:\Web\GIS\Contours\Site_GSE_Top.dwg, L:\Web\Area.dwg, L:\Work in Progress\Structure\Work in Progress\Solar Sites\ibV Energy\Rhudes Creek Solar - Hardin County\KYY\CAD\Drawings\01_ArB.dwg, L:\Web\RC_02_SOL_INF.dwg, L:\Web\RC_02_AE.dwg, L:\Web\GIS\Contours\Site_GSE_Top.dwg, L:\Web\Area.dwg

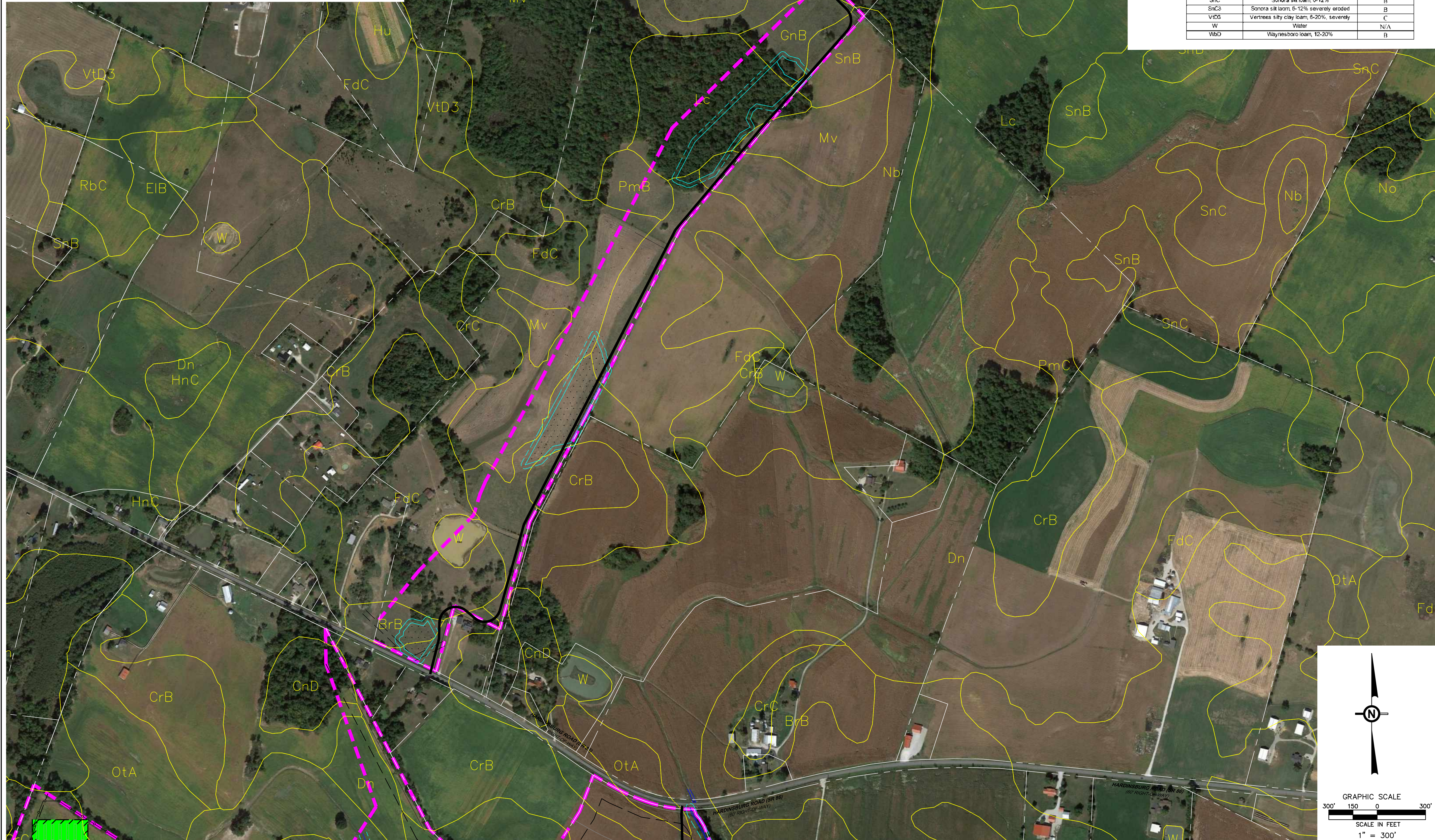
| POST WEIGHTED CN CALCULATIONS | | | | |
|--|------------------------------|--------------------|--------------------------|-----------|
| Cover Types | Remaining Existing Area (ac) | Proposed Area (ac) | % of Total Proposed Area | CN |
| Open Space (Fair), HSG B | 196.95 | 0.00 | 16.75% | 61 |
| Open Space (Fair), HSG C | 11.10 | 0.00 | 1.00% | 74 |
| Open Space (Fair), HSG D | 87.90 | 0.00 | 7.87% | 80 |
| Equipment Pad | 0.00 | 0.03 | 0.00% | 98 |
| Gravel Road W R.O.W. HSG B | 0.84 | 5.43 | 0.56% | 85 |
| Gravel Road W R.O.W. HSG D | 2.04 | 4.32 | 0.57% | 91 |
| Woods (Good), HSG B | 23.38 | 0.00 | 2.10% | 55 |
| Woods (Good), HSG C | 2.22 | 0.00 | 0.20% | 70 |
| Woods (Good), HSG D | 10.39 | 0.00 | 0.93% | 77 |
| Meadow, Cont. grass, non-grazed, HSG B | 0.00 | 424.42 | 38.04% | 58 |
| Meadow, Cont. grass, non-grazed, HSG C | 0.00 | 17.96 | 1.61% | 71 |
| Meadow, Cont. grass, non-grazed, HSG D | 0.00 | 312.53 | 28.01% | 78 |
| 1 Acre lot (20% impervious), HSG B | 4.83 | 0.00 | 0.43% | 68 |
| 1 Acre lot (20% impervious), HSG D | 10.79 | 0.00 | 0.97% | 84 |
| Wetland HSG B | 0.06 | 0.00 | 0.01% | 98 |
| Wetland HSG D | 9.98 | 0.00 | 0.89% | 98 |
| Water Surface, HSG D | 0.71 | 0.00 | 0.06% | 98 |
| TOTAL | 351.13 | 764.69 | WEIGHTED CN | 67 |

NOTE: THE CN VALUES ARE TAKEN FROM LADN USE TABLE IN HARDIN COUNTY STORMWATER MANUAL AND TR55 MANUAL

| Map Unit Symbol | Map Unit Name | Hydrologic Soil Group |
|-----------------|--|-----------------------|
| B/A | Bedford silt loam, 0-2% | D |
| B/B | Bedford silt loam, 2-8% | D |
| GnD | Carneyville-Rock outcrop complex, 6-20% | C |
| CrB | Crider silt loam, 2-8% | B |
| CrC | Crider silt loam, 8-12% | B |
| CsC | Cumberland silt loam, 6-12% | B |
| CsD | Cumberland silt loam, 12-20% | B |
| CtC3 | Cumberland silty clay loam, 6-12%, severely | B |
| En | Dunning silty clay loam, 0-2%, frequently | D |
| EB | Elk loam, 2-8% | B |
| FdC | Fredonia-Rock outcrop complex, 6-20% | C |
| GnB | Ganton silt loam, 2-8% | C |
| HnC | Hoggestown silt loam, 6-12% | C |
| Hu | Huntington silt loam | B |
| Lc | Lawrence silt loam, 0-2%, rarely flooded | D |
| Ln | Landside silt loam, 0-2%, frequently flooded | C |
| Mv | Melvin silt loam | D |
| Nb | Newark silt loam, 0-2%, frequently flooded | D |
| No | Nolin silt loam, 0-2%, frequently flooded | B |
| OA | Clwood silt loam, 0-2%, occasionally flooded | D |
| OB | Clwood silt loam, 2-8%, occasionally flooded | C |
| PmB | Pembroke silt loam, 2-6% | B |
| PmC | Pembroke silt loam, 6-12% | B |
| RbC | Riney loam, 8-12% | A |
| RcC3 | Riney sandy clay loam, 6-20%, severely | A |
| SnB | Sonora silt loam, 2-6% | B |
| SnC | Sonora silt loam, 6-12% | B |
| SnC3 | Sonora silt loam, 6-12%, severely eroded | B |
| VtC3 | Vertrees silty clay loam, 6-20%, severely | C |
| W | Water | N/A |
| WdD | Waynesboro loam, 12-20% | B |

LEGEND POST DEVELOPMENT DRAINAGE AREA FEATURES

- INDEX CONTOUR LINE
- INTERMEDIATE CONTOUR LINE
- PROPERTY BOUNDARY LINE
- PROJECT BOUNDARY LINE
- SOIL TYPE SYMBOL
- WETLAND AREA
- SINKHOLE IN KARST AREA
- SOLAR ARRAY



| NO. | REVISION | DATE |
|-----|--------------------------------|------------|
| 2 | PRELIMINARY 90% CUP SUBMISSION | 05/14/2021 |
| 1 | PRELIMINARY CUP SUBMISSION | 02/23/2021 |

Property Owners:
 EUGENE M & DOROTHY J HILL
 CLAYTON & GERALDINE GREY
 KERBY ADAM GREY
 CLAYTON GREY
 CLAYTON GREY LIVING TRUST
 CHARLES D & MARY A PETERSON

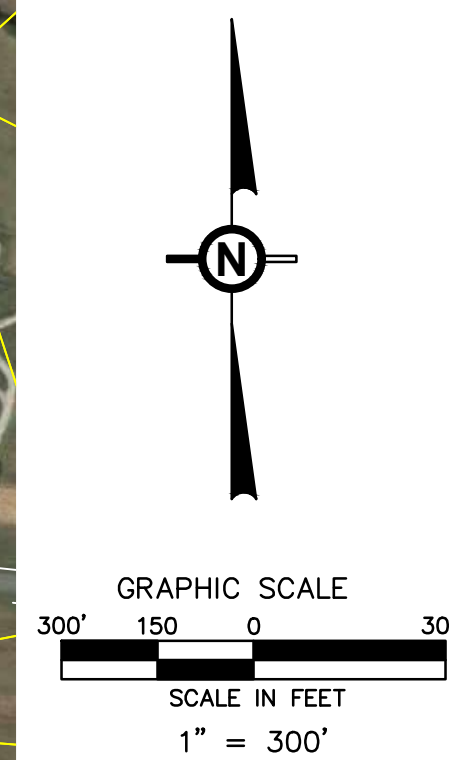
TRC TRC Engineers, Inc.
 650 Suffolk Street
 Lowell, MA 01854
 Tel: 978-970-5600
 www.trcsolutions.com

ibV energypartners
 an ibv energy company
 Applicant
ibV ENERGY PARTNERS
 984.238.4284
 JEFFREY CHANG
 JEFFREY.CHANG@IBVENERGY.COM
 777 BRICKELL AVE
 SUITE 500
 MIAMI, FL 33131

RHODES CREEK SOLAR PROJECT
 HARDIN COUNTY, KY

DRAWING TITLE:
POST DEVELOPMENT CURVE NUMBER EVALUATION

| | | |
|---|--------------|------------|
| ISSUE FOR PERMITTING ONLY. NOT INTENDED FOR CONSTRUCTION OR BIDDING PURPOSES. | SCALE: | 1" = 300' |
| | DATE: | 05/14/2021 |
| | DRAWN BY: | TRC |
| | CHECKED BY: | DTB |
| | PROJECT: | 363193 |
| | DRAWING NO.: | 2 OF 2 |



H:\Work in Progress\Solar Sites\ibV Energy\Rhodes Creek Solar - Hardin County\K\Y\CAD\Drawings\RC-01.dwg - L:\Vet\RC-02_SOL_INF.dwg - L:\Vet\RC-02_XREF.dwg - L:\Vet\GIS Contours\Site_GIS_Top_Ext.dwg - L:\Vet\Site.dwg
 I:\Projects\Infrastructure\Work in Progress\Solar Sites\ibV Energy\Rhodes Creek Solar - Hardin County\K\Y\CAD\Drawings\RC-01.dwg - L:\Vet\RC-02_SOL_INF.dwg - L:\Vet\RC-02_XREF.dwg - L:\Vet\GIS Contours\Site_GIS_Top_Ext.dwg - L:\Vet\Site.dwg