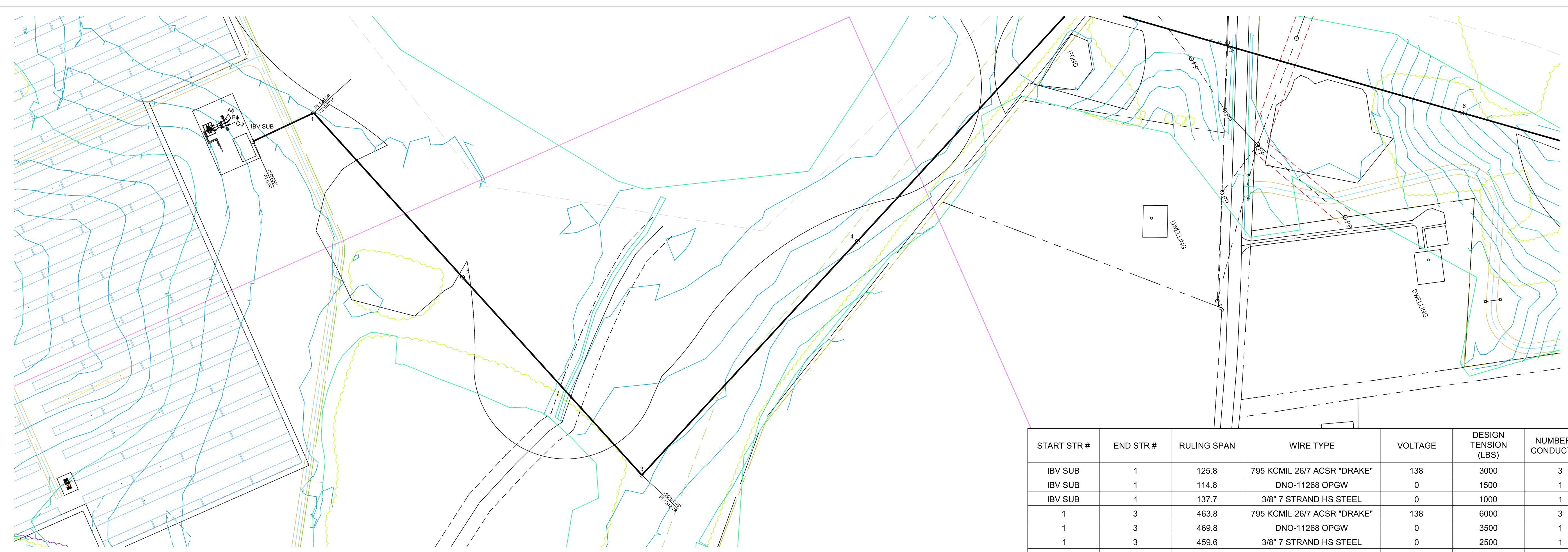


Attachment P

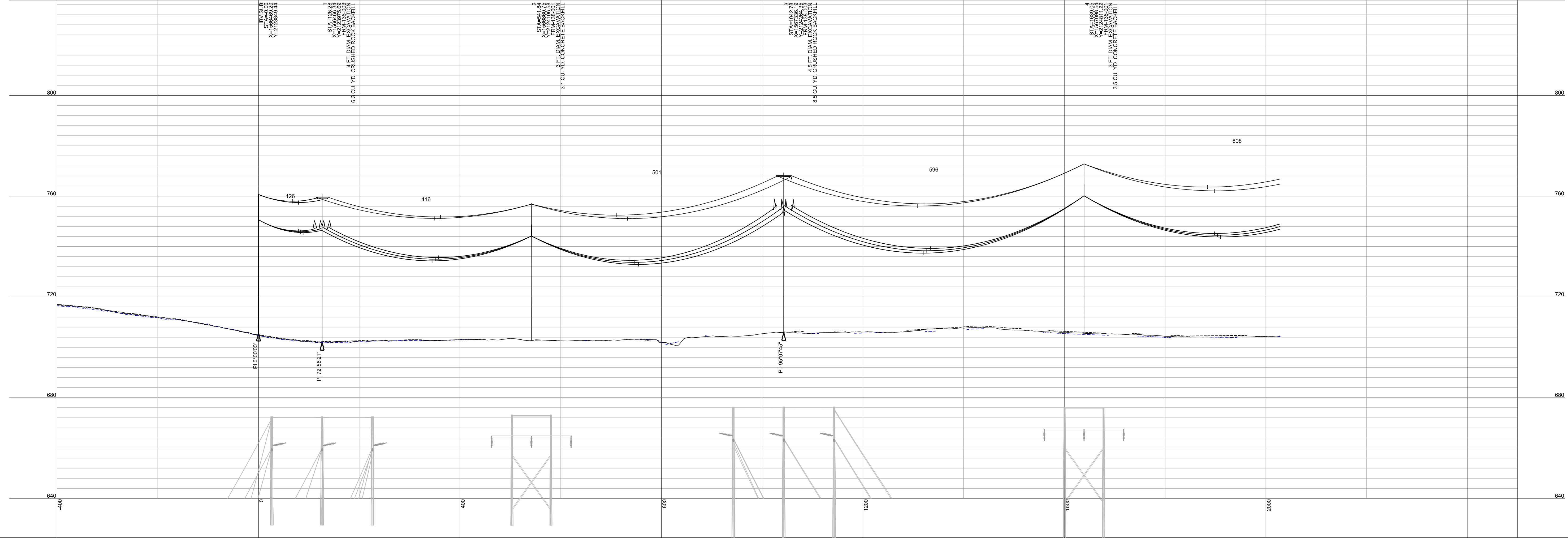
Transmission Plan and Profile Drawings

100.0 FT. HORIZ. SCALE
 20.0 FT. VERT. SCALE



START STR #	END STR #	RULING SPAN	WIRE TYPE	VOLTAGE	DESIGN TENSION (LBS)	NUMBER OF CONDUCTORS
IBV SUB	1	125.8	795 KCMIL 26/7 ACSR "DRAKE"	138	3000	3
IBV SUB	1	114.8	DNO-11268 OPGW	0	1500	1
IBV SUB	1	137.7	3/8" 7 STRAND HS STEEL	0	1000	1
1	3	463.8	795 KCMIL 26/7 ACSR "DRAKE"	138	6000	3
1	3	469.8	DNO-11268 OPGW	0	3500	1
1	3	459.6	3/8" 7 STRAND HS STEEL	0	2500	1
3	5	601.6	795 KCMIL 26/7 ACSR "DRAKE"	138	6000	3
3	5	604.2	DNO-11268 OPGW	0	3500	1
3	5	600.6	3/8" 7 STRAND HS STEEL	0	2500	1

- NOTES:
- DESIGN CONDITION = NESC HEAVY (RULE 250B)
 - DISPLAY WEATHER CASE = 120°F FOR SHIELD WIRE & 212°F (MOT) FOR CONDUCTOR
 - DISPLAY CONDITION = MAX SAG RS
 - SURVEY COORDINATE SYSTEM = NAD83/2011 KENTUCKY SINGLE ZONE
 - SURVEYED BY MCKIM & CREED 12/29/20 - 1/12/20



IBV SUB
 STA=0+00
 X=18764.00
 Y=7232849.44

STA=126+28
 X=18996.07
 Y=7232977.69
 6.4 CU. YD. CRUSHED ROCK BACKFILL

STA=414
 X=19096.07
 Y=7232977.69
 3.1 CU. YD. CONCRETE BACKFILL

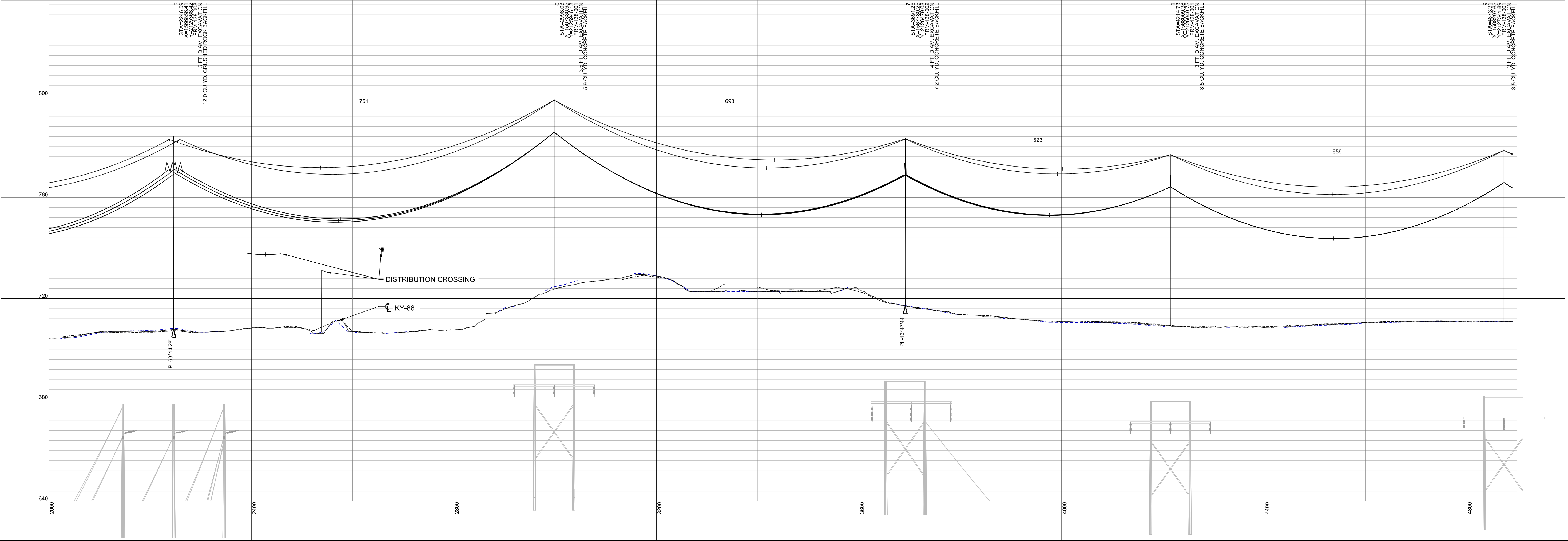
STA=596+00
 X=19726.07
 Y=7232977.69
 4.5 CU. YD. CRUSHED ROCK BACKFILL

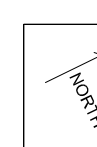
STA=1638+00
 X=19726.07
 Y=7232977.69
 3.5 CU. YD. CONCRETE BACKFILL

START STR #	END STR #	RULING SPAN	WIRE TYPE	VOLTAGE	DESIGN TENSION (LBS)	NUMBER OF CONDUCTORS
5	11	681.0	795 KCMIL 26/7 ACSR "DRAKE"	138	7000	3
5	11	678.5	DNO-11268 OPGW	0	3500	1
5	11	683.9	3/8" 7 STRAND HS STEEL	0	3000	1

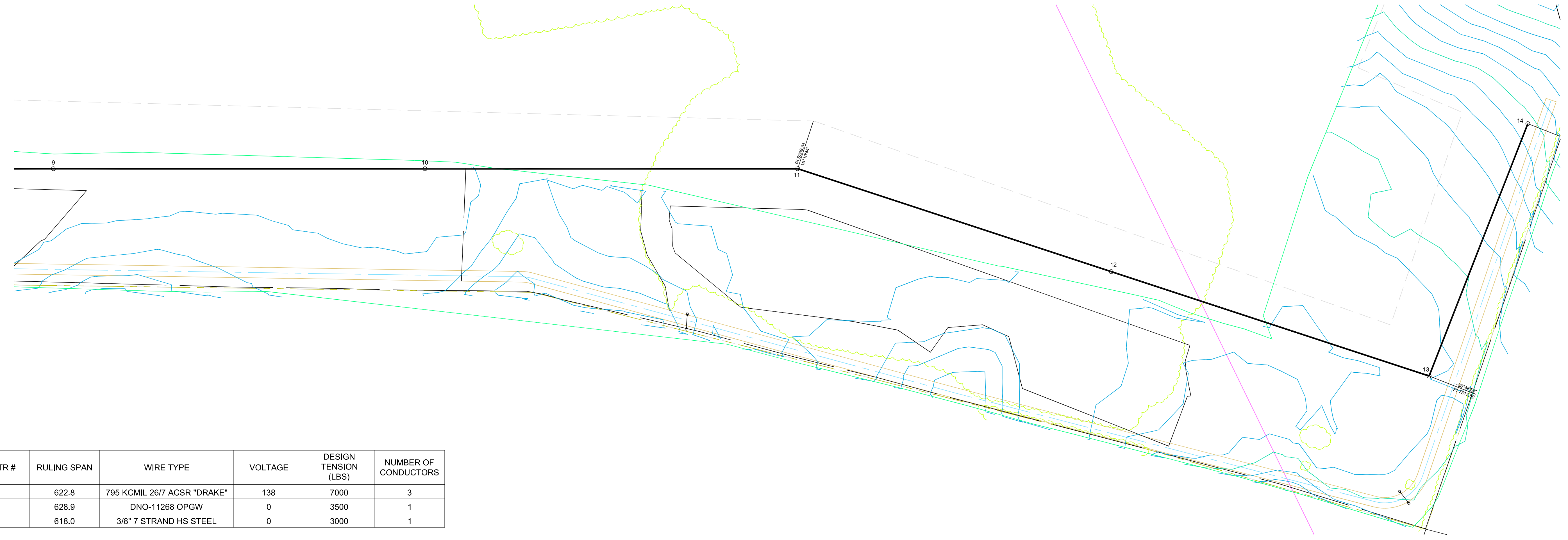


- NOTES:
- DESIGN CONDITION = NESC HEAVY (RULE 250B)
 - DISPLAY WEATHER CASE = 120°F FOR SHIELD WIRE & 212°F (MOT) FOR CONDUCTOR
 - DISPLAY CONDITION = MAX SAG RS
 - SURVEY COORDINATE SYSTEM = NAD83/2011 KENTUCKY SINGLE ZONE
 - SURVEYED BY MCKIM & CREED 12/29/20 - 1/12/20



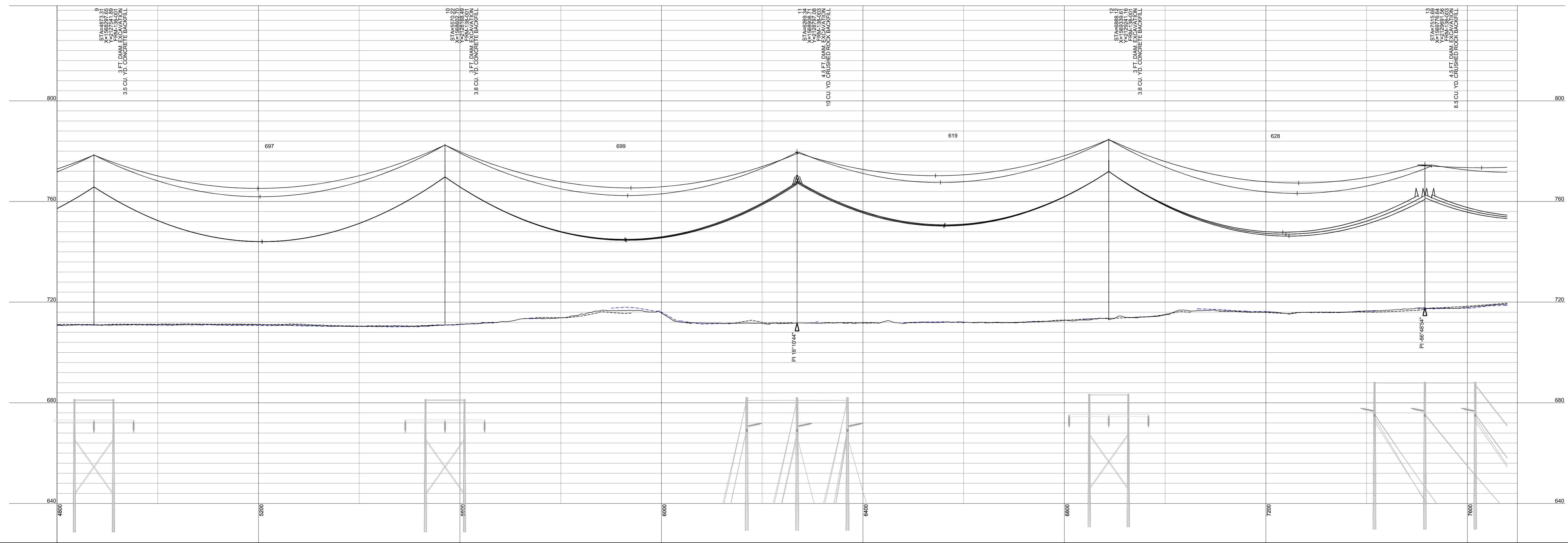


100.0 FT. HORIZ. SCALE
 20.0 FT. VERT. SCALE

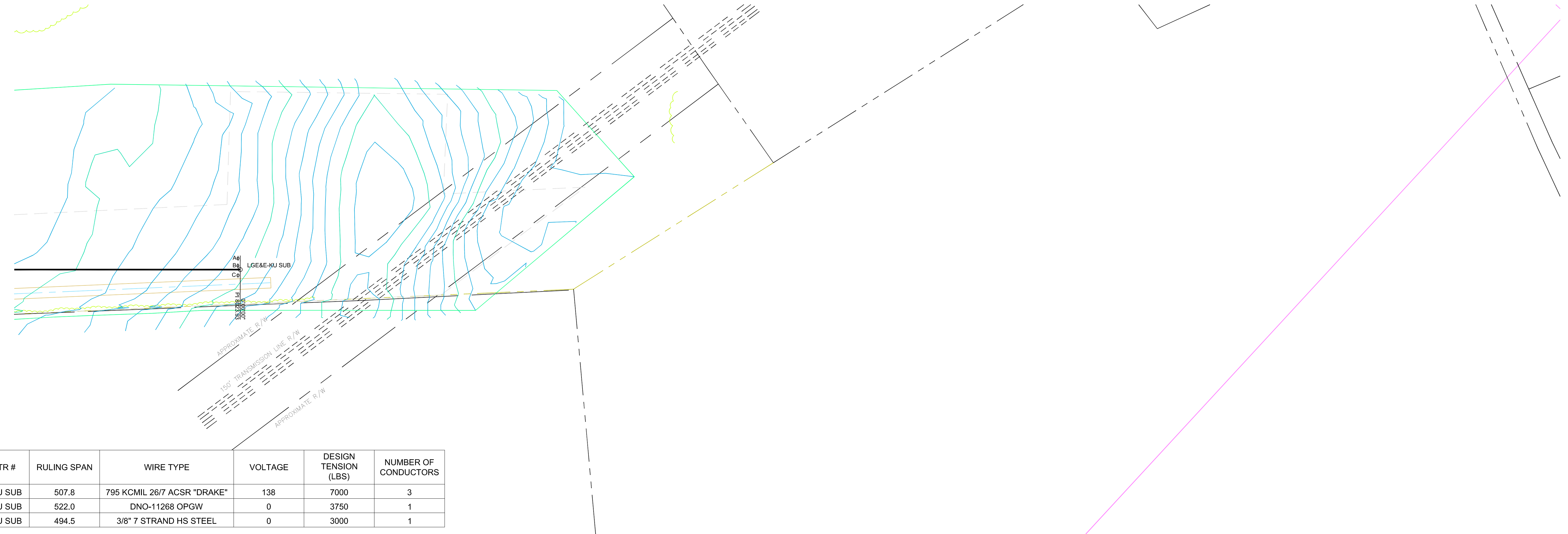


START STR #	END STR #	RULING SPAN	WIRE TYPE	VOLTAGE	DESIGN TENSION (LBS)	NUMBER OF CONDUCTORS
11	13	622.8	795 KCMIL 26/7 ACSR "DRAKE"	138	7000	3
11	13	628.9	DNO-11268 OPGW	0	3500	1
11	13	618.0	3/8" 7 STRAND HS STEEL	0	3000	1

- NOTES:
- DESIGN CONDITION = NESC HEAVY (RULE 250B)
 - DISPLAY WEATHER CASE = 120°F FOR SHIELD WIRE & 212°F (MOT) FOR CONDUCTOR
 - DISPLAY CONDITION = MAX SAG RS
 - SURVEY COORDINATE SYSTEM = NAD83/2011 KENTUCKY SINGLE ZONE
 - SURVEYED BY MCKIM & CREED 12/29/20 - 1/12/20



100.0 FT. HORIZ. SCALE
 20.0 FT. VERT. SCALE



START STR #	END STR #	RULING SPAN	WIRE TYPE	VOLTAGE	DESIGN TENSION (LBS)	NUMBER OF CONDUCTORS
13	LG&E-KU SUB	507.8	795 KCMIL 26/7 ACSR "DRAKE"	138	7000	3
13	LG&E-KU SUB	522.0	DNO-11268 OPGW	0	3750	1
13	LG&E-KU SUB	494.5	3/8" 7 STRAND HS STEEL	0	3000	1

- NOTES:
- DESIGN CONDITION = NESC HEAVY (RULE 250B)
 - DISPLAY WEATHER CASE = 120°F FOR SHIELD WIRE & 212°F (MOT) FOR CONDUCTOR
 - DISPLAY CONDITION = MAX SAG RS
 - SURVEY COORDINATE SYSTEM = NAD83/2011 KENTUCKY SINGLE ZONE
 - SURVEYED BY MCKIM & CREED 12/29/20 - 1/12/20

