

- NOT A PROPERTY BOUNDARY SURVEY -

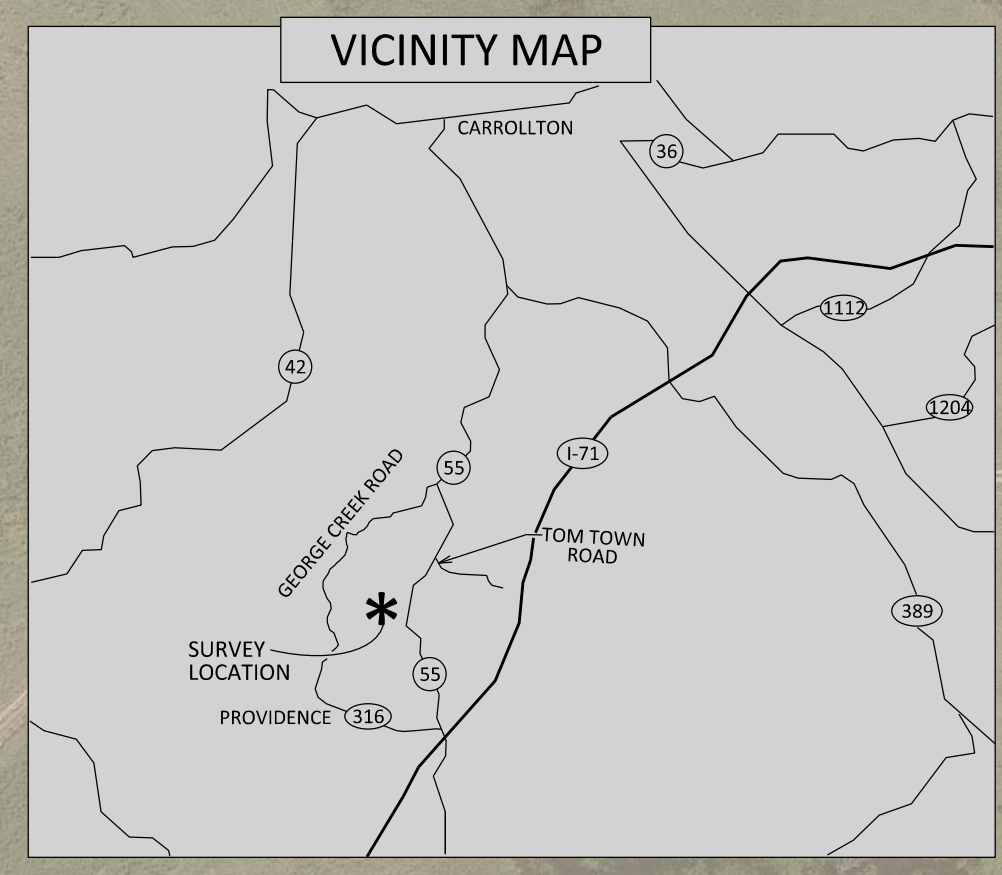
NUMBER	DIRECTION	DISTANCE
L1	N 82°00'33" W	329.26
L2	N 82°48'21" W	393.35
L3	N 78°13'28" W	349.92
L4	S 81°44'30" W	32.38
L5	S 81°07'39" W	445.04
L6	S 86°29'47" W	287.03
L7	N 71°15'19" W	201.31
L8	N 79°08'36" W	75.35
L9	S 88°37'38" W	178.64
L10	N 83°19'36" W	270.02
L11	S 83°35'20" W	214.47
L12	N 73°59'00" W	62.65
L13	N 73°55'51" W	45.68
L14	N 55°07'09" W	67.14
L15	N 40°39'41" W	13.35
L16	N 40°39'41" W	73.38
L17	N 18°50'08" W	365.87
L18	N 04°40'44" W	140.48
L19	N 04°37'46" E	156.73
L20	N 04°37'46" E	99.07
L21	N 20°32'17" E	99.49
L22	N 21°25'06" E	186.09
L23	N 25°28'11" E	208.50
L24	N 06°05'26" W	302.41
L25	N 58°19'40" E	35.42
L26	N 58°19'40" E	66.14
L27	N 75°42'43" E	128.30
L28	S 85°33'25" E	277.38
L29	S 63°45'19" E	254.66
L30	S 81°16'11" E	109.55
L31	S 73°26'18" E	78.54
L32	S 86°47'14" E	22.70
L33	S 53°09'03" E	32.59
L34	S 50°15'35" E	373.91
L35	S 43°50'44" E	196.45
L36	S 40°36'36" E	162.65
L37	S 86°43'59" E	388.00
L38	N 19°19'50" W	350.21
L39	N 30°35'01" W	442.14
L40	N 87°20'54" E	397.48
L41	N 89°18'41" E	514.05
L42	S 89°25'35" E	617.61
L43	S 06°24'55" W	934.66
L44	S 06°16'42" W	30.00
L45	S 81°52'18" E	781.70

SHELBY ENERGY COOPERATIVE, INC
SERVICE TERRITORY

COORDINATES			
1 = N=397526.48 E=1366840.95	13 = N=397701.41 E=1364039.07	25 = N=399314.84 E=1363935.09	37 = N=398701.69 E=1365412.59
2 = N=397572.25 E=1366514.89	14 = N=397714.05 E=1363995.18	26 = N=399333.44 E=1363965.23	38 = N=398679.58 E=1365799.95
3 = N=397621.51 E=1366124.63	15 = N=397752.45 E=1363940.10	27 = N=399368.17 E=1364021.52	39 = N=399010.05 E=1365884.03
4 = N=397692.92 E=1365782.08	16 = N=397762.58 E=1363991.40	28 = N=399399.83 E=1364145.85	40 = N=399390.68 E=1365459.07
5 = N=397688.27 E=1365750.04	17 = N=397818.24 E=1363883.59	29 = N=399378.34 E=1364422.40	41 = N=399409.07 E=1365856.12
6 = N=397619.63 E=1365310.32	18 = N=398164.52 E=1363765.47	30 = N=399265.73 E=1364650.81	42 = N=399415.25 E=1366370.14
7 = N=397602.09 E=1365023.83	19 = N=398304.53 E=1363754.01	31 = N=399249.10 E=1364759.09	43 = N=399409.06 E=1366987.72
8 = N=397666.78 E=1364833.20	20 = N=398460.75 E=1363766.66	32 = N=399226.71 E=1364834.37	44 = N=398480.26 E=1366883.29
9 = N=397680.97 E=1364759.20	21 = N=398559.50 E=1363774.65	33 = N=399225.44 E=1364857.03	45 = N=398450.44 E=1366880.00
10 = N=397676.69 E=1364580.61	22 = N=398652.66 E=1363809.56	34 = N=399205.90 E=1364883.11	46 = N=398339.91 E=1367653.85
11 = N=397708.07 E=1364312.42	23 = N=398825.90 E=1363877.51	35 = N=398966.85 E=1365170.63	
12 = N=397684.13 E=1364099.29	24 = N=399014.14 E=1363967.18	36 = N=398825.17 E=1365306.72	

NOTES

- 1.) SURVEY DATUM:
SURVEY CONTROL WAS BASED ON A KYTC VRS ENABLED GPS ROVER.
HORIZONTAL: KENTUCKY NORTH ZONE (NAD83)
VERTICAL: NORTH AMERICAN VERTICAL DATUM 1988 - GEOID 18
ALL BEARINGS, DISTANCES, AND COORDINATES SHOWN HEREON ARE REFERENCED TO GRID NORTH OF THE KENTUCKY NORTH ZONE STATE PLANE COORDINATE SYSTEM (NAD83).
ALL HORIZONTAL MEASUREMENTS SHOWN HEREON ARE EXPRESSED IN US SURVEY FEET.
- 2.) THE EXISTING TERRITORIAL BOUNDARY LINES SHOWN HEREON ARE BASED UPON MAP 28-C-3, APPROVED BY THE PUBLIC SERVICE COMMISSION (PSC) ON SEPTEMBER 2, 1982.
- 3.) AGE ENGINEERING PERFORMED A FIELD SURVEY ON DECEMBER 29TH, 2020 AND JANUARY 4TH, 2021 TO LOCATE CORNER MONUMENTATION OF THE PLATS OF RECORD SHOWN HEREON. MONUMENTS FOUND ARE NOTED ON THIS MAP. THE PLATS SHOWN HEREON ARE OF RECORD IN THE CARROLL CO. CLERKS OFFICE.
- 4.) IT IS THE INTENT OF THE PROPOSED TERRITORIAL BOUNDARY LINES TO RUN COINCIDENT WITH EXISTING PROPERTY DIVISION LINES.



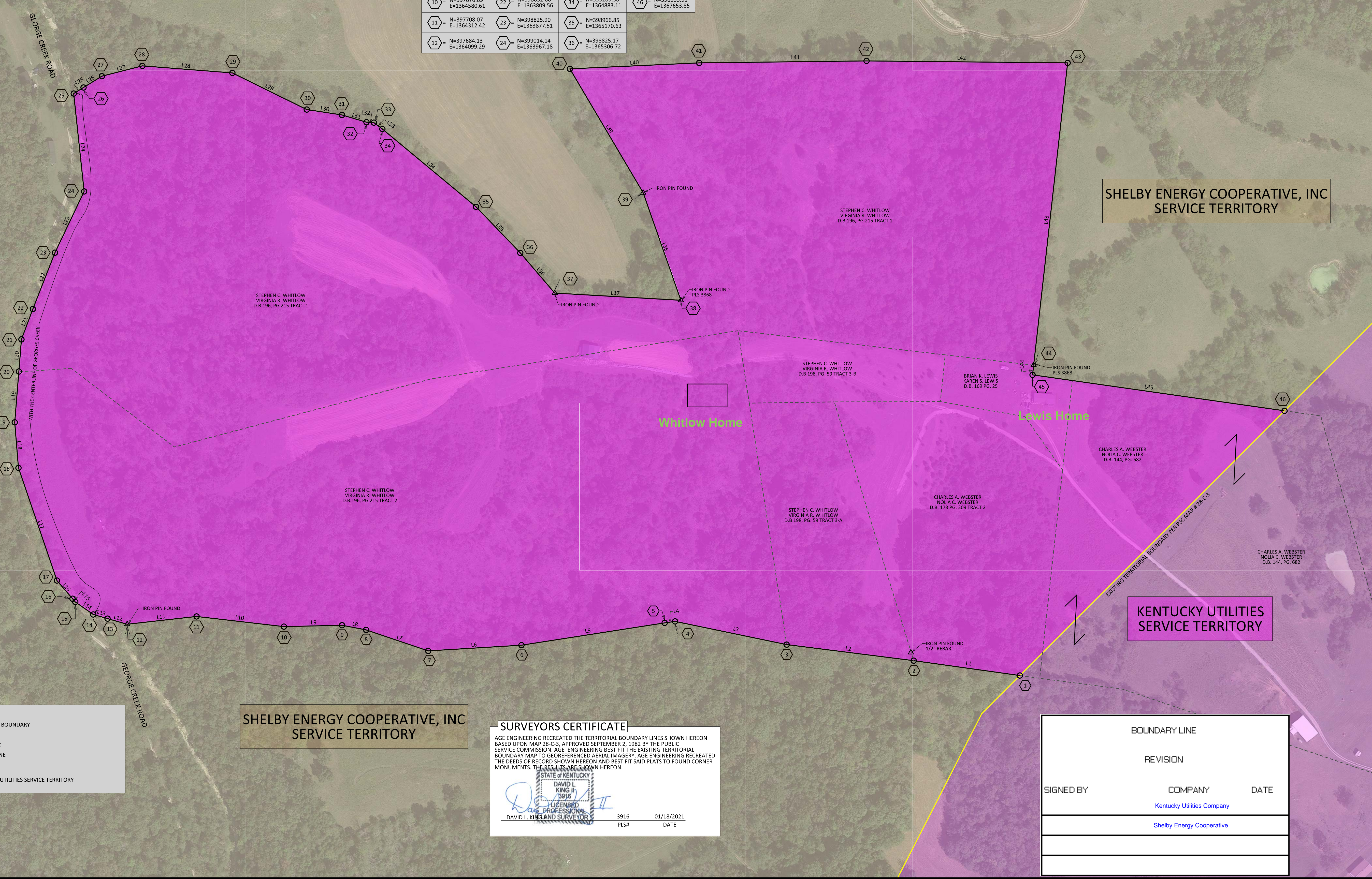
DATE: 01/18/2021
SCALE: 1" = 150'
DRAWN BY: DLA
APPROVED BY: DLK
FILENAME: 20001MAP

KENTUCKY UTILITIES - SHELBY RECC
TERRITORIAL BOUNDARY CHANGES
HWY 55
CAMPBELLSBURG, CARROLL CO., KY

P.O. BOX 204
165 FOSTER LANE
STANFORD, KY 40484
PHONE (606) 365-8362
FAX (606) 365-1097



REVISION(S)
SHEET: 1 OF 1



LEGEND

- POINT ALONG PROPOSED TERRITORIAL BOUNDARY
- △ FOUND MONUMENT
- EXISTING TERRITORIAL BOUNDARY LINE
- - - PROPOSED TERRITORIAL BOUNDARY LINE
- - - PROPERTY BOUNDARY LINES
- = AREA TO BE ADDED TO THE KENTUCKY UTILITIES SERVICE TERRITORY

SHELBY ENERGY COOPERATIVE, INC
SERVICE TERRITORY

SURVEYORS CERTIFICATE

AGE ENGINEERING RECREATED THE TERRITORIAL BOUNDARY LINES SHOWN HEREON BASED UPON MAP 28-C-3, APPROVED SEPTEMBER 2, 1982 BY THE PUBLIC SERVICE COMMISSION. AGE ENGINEERING BEST FIT THE EXISTING TERRITORIAL BOUNDARY MAP TO GEOREFERENCED AERIAL IMAGERY. AGE ENGINEERING RECREATED THE DEEDS OF RECORD SHOWN HEREON AND BEST FIT SAID PLATS TO FOUND CORNER MONUMENTS. THE RESULTS ARE SHOWN HEREON.

STATE OF KENTUCKY
DAVID L. KING JR.
1996
LICENSED PROFESSIONAL SURVEYOR

3916 01/18/2021
PLS# DATE

BOUNDARY LINE		
REVISION		
SIGNED BY	COMPANY	DATE
	Kentucky Utilities Company	
	Shelby Energy Cooperative	