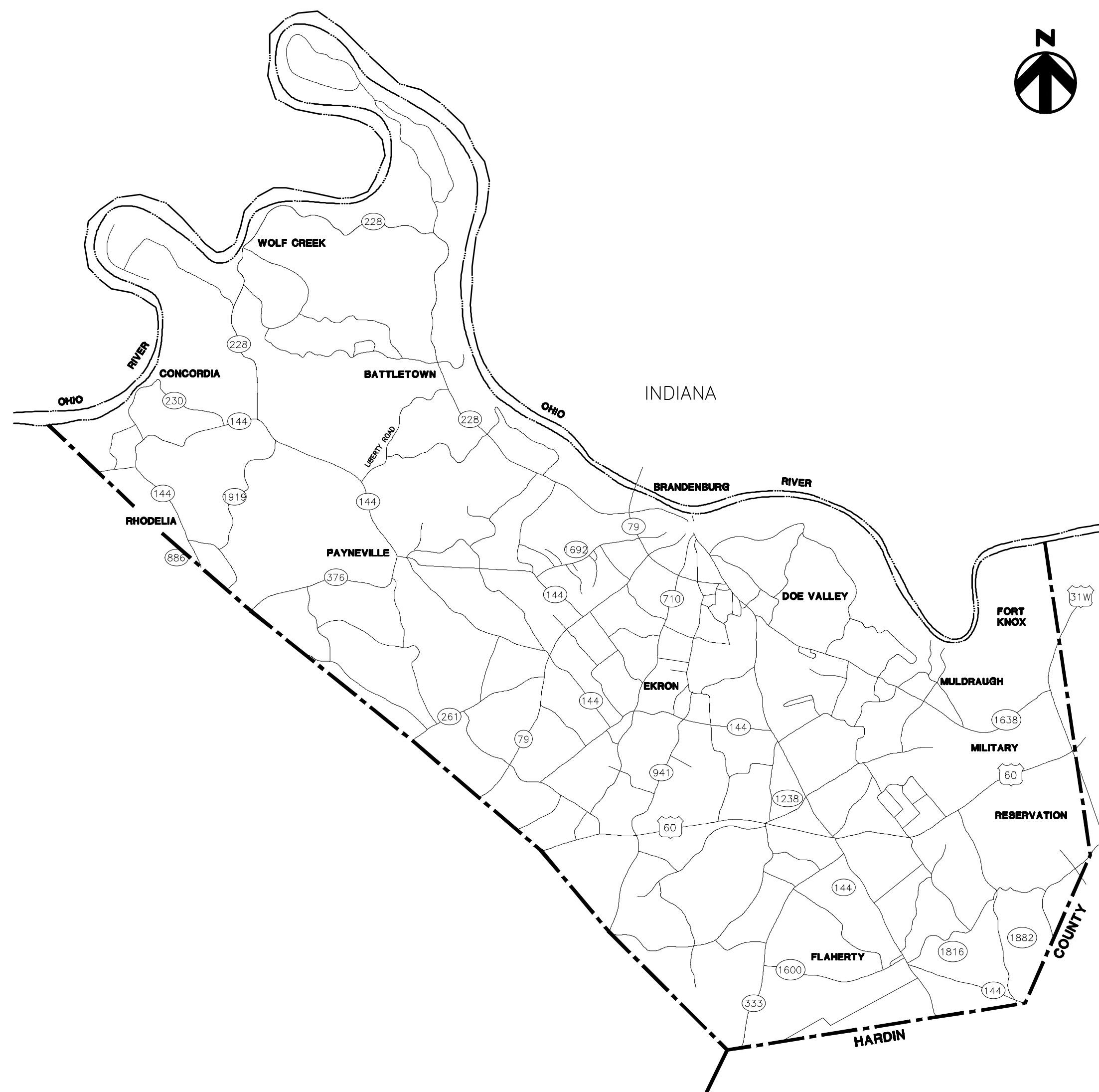


MEADE COUNTY WATER DISTRICT



VICINITY MAP NTS

Contract Drawings For

Meade County Water District 2019 Water System Improvements

General / Civil

Project No. 10175028

Louisville, KY
January 2021

INDEX OF DRAWINGS

GENERAL

- G-01 COVER
- G-02 GENERAL NOTES, UTILITY INFORMATION, AND LEGEND
- G-03 PLAN INDEX SHEET

CIVIL

LINE EXTENSIONS

NOT IN CONTRACT	C-01	LINE "A" - STA. 0+00 TO STA. 18+00	KY 1600 - ST. MARTINS ROAD	
	C-02	LINE "A" - STA. 18+00 TO STA. 36+00	KY 1600 - ST. MARTINS ROAD	
	C-03	LINE "A" - STA. 36+00 TO STA. 54+00	KY 1600 - ST. MARTINS ROAD	
	C-04	LINE "A" - STA. 54+00 TO STA. 72+00	KY 1600 - ST. MARTINS ROAD	
	C-05	LINE "A" - STA. 72+00 TO STA. 83+50	KY 1600 - ST. MARTINS ROAD	
	C-06	LINE "A1" - STA. 0+00 TO STA. 18+00	VESSELS ROAD	
	C-07	LINE "A1" - STA. 18+00 TO STA. 30+00	VESSELS ROAD	
	C-08	LINE "A2" - STA. 0+00 TO STA. 18+00	TUCKER ROAD	
	C-09	LINE "A2" - STA. 18+00 TO STA. 25+50	TUCKER ROAD	
	C-10	LINE "A3" - STA. 0+00 TO STA. 37+00	CLARKSON ROAD	
	C-11	LINE "A3" - STA. 37+00 TO STA. 74+00	CLARKSON ROAD	
	C-12	LINE "A3" - STA. 74+00 TO STA. 109+50	CLARKSON ROAD	
	ALTERNATE NO. 1	C-13	LINE "B" - STA. 0+00 TO STA. 18+00	KY 1238 - STITH VALLEY ROAD
C-14		LINE "B" - STA. 18+00 TO STA. 36+00	KY 1238 - STITH VALLEY ROAD	
C-15		LINE "B" - STA. 36+00 TO STA. 54+00	KY 1238 - STITH VALLEY ROAD	
C-16		LINE "B" - STA. 54+00 TO STA. 77+00	KY 1238 - STITH VALLEY ROAD / SPRINGDALE ROAD	
C-17		LINE "B" - STA. 77+00 TO STA. 95+00	SPRINGDALE ROAD	
C-18		LINE "C" - STA. 0+00 TO STA. 18+00	KENNEDY ROAD	
C-19		LINE "C" - STA. 18+00 TO STA. 39+00	KENNEDY ROAD / KY 710 - OLD STATE ROAD	
C-20		LINE "C" - STA. 39+00 TO STA. 57+50	KY 710 - OLD STATE ROAD	
C-21		LINE "C" - STA. 57+50 TO STA. 75+00	KY 710 - OLD STATE ROAD	
C-22		LINE "C1" - STA. 0+00 TO STA. 16+50	RIDGE POINT DRIVE	
C-23		LINE "C2" - STA. 0+00 TO STA. 17+50	POINT SALEM ROAD	
C-24		LINE "D" - STA. 0+00 TO STA. 21+00	COUNTRY LANE	
ALTERNATE NO. 2		C-25	LINE "E" - STA. 0+00 TO STA. 18+00	KY 703 - SANDY HILL ROAD
	C-26	LINE "E" - STA. 18+00 TO STA. 37+00	KY 703 - SANDY HILL ROAD	
	C-27	LINE "E1" - STA. 0+00 TO STA. 15+50	GOBLER KNOB ROAD	
	C-28	LINE "F" - STA. 0+00 TO STA. 18+00	CHARLIE PILE ROAD	
	C-29	LINE "F" - STA. 18+00 TO STA. 36+00	CHARLIE PILE ROAD	
	C-30	LINE "F" - STA. 36+00 TO STA. 42+50	CHARLIE PILE ROAD	
	C-31	LINE "F1" - STA. 0+00 TO STA. 25+00	GUY COURT	
	C-32	LINE "F2" - STA. 0+00 TO STA. 23+00	FALLEN ROAD / OAKS LANE	
	C-33	LINE "G" - STA. 0+00 TO STA. 11+00	US 60	
	C-34	LINE "H" - STA. 0+00 TO STA. 15+50	FORREST HILLS ROAD	
	C-35	LINE "I" - STA. 0+00 TO STA. 15+50	GREEN MEADOWS ROAD	
	ALTERNATE NO. 3	C-36	LINE "1" - STA. 0+00 TO STA. 13+00	FRED FACKLER ROAD
		C-37	LINE "1" - STA. 13+00 TO STA. 35+00	FRED FACKLER ROAD
C-38		LINE "1" - STA. 35+00 TO STA. 57+00	FRED FACKLER ROAD	
C-39		LINE "1" - STA. 57+00 TO STA. 66+50	FRED FACKLER ROAD	
C-40		LINE "2" - STA. 0+00 TO STA. 24+50	TAMMY LANE & WILLARDS LANE	
C-41		LINE "3" - STA. 0+00 TO STA. 21+00	BUCK GROVE ROAD	
C-42		LINE "4" - STA. 0+00 TO STA. 6+50	M. CAIN ROAD / KY 1638 - OLD MILL ROAD	
C-43		LINE "5" - STA. 0+00 TO STA. 19+00	WHELAN ROAD	
C-44		LINE "6" - STA. 0+00 TO STA. 18+00	US 60	
C-45		LINE "6" - STA. 18+00 TO STA. 37+00	US 60	
C-46		LINE "7" - STA. 0+00 TO STA. 18+00	FARRIS ROAD	
C-47		LINE "7" - STA. 18+00 TO STA. 36+50	FARRIS ROAD	
C-48		LINE "8" - STA. 0+00 TO STA. 16+00	KY 1238 - GARRETT ROAD	
C-49	LINE "8" - STA. 16+00 TO STA. 33+00	KY 1238 - GARRETT ROAD		
C-50	LINE "8" - STA. 33+00 TO STA. 50+00	KY 1238 - GARRETT ROAD		
C-51	LINE "8" - STA. 50+00 TO STA. 65+00	KY 1238 - GARRETT ROAD		
C-52	LINE "9" - STA. 0+00 TO STA. 13+00 & LINE "9A" - STA. 0+00 TO STA. 9+50	KY 1238 - GARRETT ROAD		
C-53	LINE "10" - STA. 0+00 TO STA. 12+50 & LINE "10A" - STA. 0+00 TO STA. 4+50	FAWN LANE & WHITE TAIL COURT		
GRID TIES				
STANDARD DETAILS				
C-54	STANDARD DETAILS			
C-55	MAINTENANCE OF TRAFFIC DETAILS			
C-56	EPSC NOTES AND TYPICAL SERVICE LAYOUT DETAIL			
C-57	EPSC DETAILS			



GENERAL NOTES:

- LOCATIONS SHOWN FOR EXISTING UTILITIES ARE APPROXIMATE AND ARE BASED ON AVAILABLE DRAWINGS AND FIELD INFORMATION. OTHER UTILITIES MAY EXIST WHICH ARE NOT SHOWN ON THE PLANS. CONTRACTOR SHALL DETERMINE EXACT LOCATIONS BEFORE EXCAVATING FOR NEW FACILITIES. CONTRACTOR SHALL INVESTIGATE ALL AREAS FOR THE PRESENCE OF EXISTING UTILITIES PRIOR TO ANY EXCAVATION.
- KENTUCKY STATUTE (KRS 367) REQUIRES THAT ALL EXCAVATORS PLANNING EXCAVATION OR DEMOLITION WORK SHALL NOTIFY AND ALERT ALL UTILITY COMPANIES IN THE AREA AND/OR UNDERGROUND PROTECTION SERVICE SUCH AS KENTUCKY811 (811) AT LEAST TWO (2) WORKING DAYS BEFORE COMMENCING THE PLANNED EXCAVATION OR DEMOLITION ACTIVITIES.
- WHERE THE WATERLINE IS OUTSIDE OF RIGHT-OF-WAY THE PERMANENT EASEMENT IS TYPICALLY 15 FEET WIDE, UNLESS OTHERWISE NOTED ON THE PLANS.
- THE CONTRACTOR SHALL NOTIFY THE OWNER AND ENGINEER TWO (2) WORKING DAYS IN ADVANCE OF ANY WORK THAT REQUIRES EXISTING UTILITIES TO BE TEMPORARILY TAKEN OUT OF SERVICE.
- LOCATIONS SHOWN FOR AIR RELEASE VALVES ARE APPROXIMATE. ACTUAL HIGH POINTS SHALL BE FIELD LOCATED AND APPROVED BY THE ENGINEER PRIOR TO VALVE INSTALLATION.
- STATIONS SHOWN ON THE WATER LINE ARE FOR REFERENCE ONLY AND DO NOT REFLECT THE EXACT LENGTH OF PIPE REQUIRED FOR CONSTRUCTION.

KENTUCKY DEPARTMENT OF HIGHWAYS (KDOH) GENERAL NOTES:

- WATER MAIN INSTALLED INSIDE STATE RIGHT-OF-WAY SHALL BE LOCATED WITHIN 3 TO 5 FEET OF THE RIGHT-OF-WAY UNLESS OTHERWISE SHOWN ON THE PLANS.
- WATER MAIN LOCATED MORE THAN 5 FEET FROM THE EDGE OF THE RIGHT-OF-WAY SHALL BE INSTALLED WITH A MINIMUM DEPTH OF COVER OF 42 INCHES.
- WATER VALVES, HYDRANTS AND OTHER APPURTENANCES SHALL BE INSTALLED NO CLOSER THAN 3- FEET FROM DITCH LINE.
- UNDERGROUND UTILITIES CROSSING ANY ENTRANCE OR CROSSROADS PAVED WITH CONCRETE OR ASPHALT SURFACE INSIDE STATE RIGHT-OF-WAY SHALL BE INSTALLED BY FREE BORING. OPEN CUTTING OF THESE ENTRANCES WILL BE CONSIDERED ON A CASE BY CASE BASIS. WRITTEN CONSENT MUST BE OBTAINED FROM THE PROPERTY OWNER AND APPROVED BY KDOH AND MCWD.
- WATER MAIN SHALL NOT BE INSTALLED IN EMBANKMENT FILLS OR BETWEEN EDGE OF PAVEMENT AND DITCH LINE UNLESS SPECIFICALLY NOTED ON PERMITTED PLANS.
- HYDRANTS OR UTILITY SERVICE BOXES SHOULD BE LOCATED WITHIN 2 FEET OF RIGHT-OF-WAY LINE OR OUTSIDE THE RIGHT-OF-WAY.
- CONTACT STEVE HALL AT KDOH DISTRICT #4, ELIZABETHTOWN, KY. AT (270) 766-5066 PRIOR TO BEGINNING WORK.

UTILITY INFORMATION:

WATER:	MEADE COUNTY WATER DISTRICT HARDIN COUNTY WATER DISTRICT NO. 1	(270) 422-5006 (270) 351-3222
ELECTRIC:	MEADE COUNTY RECC	(270) 422-2162
CABLE:	INTERMEDIATE	(270) 422-4994
TELEPHONE:	BRANDENBURG TELEPHONE COMPANY	(270) 422-2121
GAS:	ELIZABETHTOWN GAS CONTACT: MATTHEW HOBBS TEXAS GAS MONUMENT CHEMICAL CONTACT: DANNY WILLIAMS	(270) 765-6121 (270) 926-8686 (270) 422-6233

TRANSPORTATION INFORMATION:

STATE:	KDOH DISTRICT #4 ELIZABETHTOWN, KY. CONTACT: CHARLES MASON	(270) 766-5066
COUNTY:	MEADE COUNTY ROAD DEPARTMENT BRANDENBURG, KY. CONTACT: JEFF PADGETT	(270) 422-3577

SOURCE OF CONTROL

KENTUCKY STATE PLANE SINGLE ZONE
NORTH AMERICAN DATUM OF 1983 (NAVD83)



LEGEND

PROPOSED	EXISTING	
		WATER LINE
		GATE VALVE & BOX
		FIELD LOCATED WATER VALVE
		WATER METER
		FIELD LOCATED WATER METER
		FLUSHING HYDRANT ASSEMBLY (INCLUDES VALVE)
		AIR RELEASE VALVE
		PRESSURE REDUCING VALVE (PRV)
		BENDS (90°, 45°, 22-1/2°, 11-1/4°)
		REDUCER
		LEAK DETECTION ASSEMBLY
		FREE BORE
		PROPOSED EASEMENT
		BORE AND JACK/OPEN CUT
		LINE MARKER
		RIGHT-OF-WAY
		PROPERTY LINE
		CREEK
		GAS MAIN
		OVERHEAD UTILITY LINE
		FIBER OPTIC CABLE
		UNDERGROUND CABLE TV
		UNDERGROUND TELEPHONE
		STORM PIPE
		EDGE OF PAVEMENT
		EDGE OF SHOULDER
		GRAVEL DRIVE
		ASPHALT PAVEMENT DRIVE
		CONCRETE PAVEMENT DRIVE



PROJECT MANAGER	KEVIN J. BRIAN
DESIGNED BY	KEVIN J. BRIAN
DRAWN BY	WILLIAM M. GUMM
QA / QC	MIKE HANSEN
PROJECT NUMBER	10175028



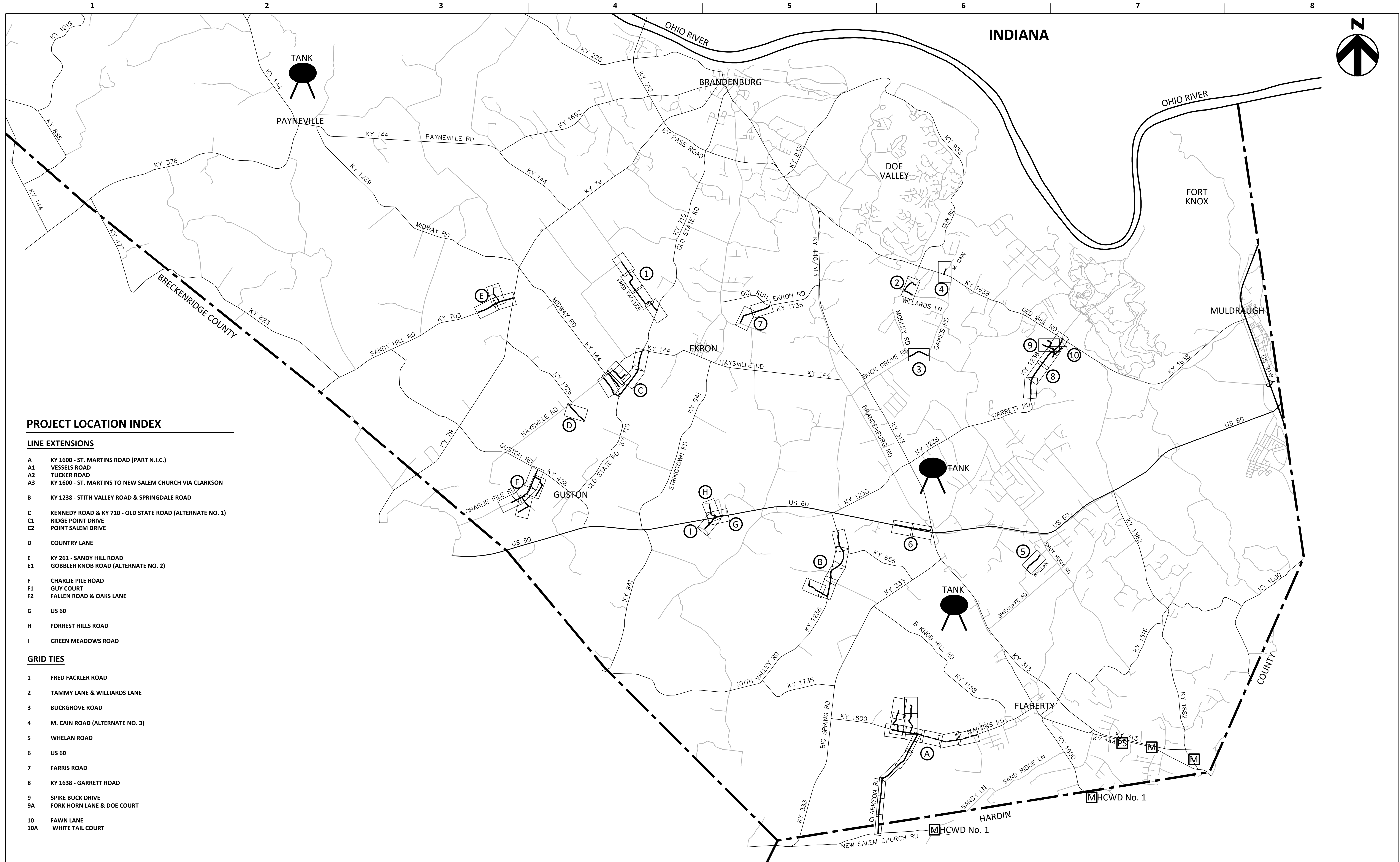
MEADE COUNTY WATER DISTRICT
2019 WATER SYSTEM IMPROVEMENTS
MEADE COUNTY, KENTUCKY



GENERAL GENERAL NOTES AND LEGEND

FILENAME | G-02.dwg
SCALE | NONE

SHEET
G-02



PROJECT LOCATION INDEX

LINE EXTENSIONS

- A KY 1600 - ST. MARTINS ROAD (PART N.I.C.)
- A1 VESSELS ROAD
- A2 TUCKER ROAD
- A3 KY 1600 - ST. MARTINS TO NEW SALEM CHURCH VIA CLARKSON
- B KY 1238 - STITH VALLEY ROAD & SPRINGDALE ROAD
- C KENNEDY ROAD & KY 710 - OLD STATE ROAD (ALTERNATE NO. 1)
- C1 RIDGE POINT DRIVE
- C2 POINT SALEM DRIVE
- D COUNTRY LANE
- E KY 261 - SANDY HILL ROAD
- E1 GOBBLER KNOB ROAD (ALTERNATE NO. 2)
- F CHARLIE PILE ROAD
- F1 GUY COURT
- F2 FALLEN ROAD & OAKS LANE
- G US 60
- H FORREST HILLS ROAD
- I GREEN MEADOWS ROAD

GRID TIES

- 1 FRED FACKLER ROAD
- 2 TAMMY LANE & WILLIARDS LANE
- 3 BUCKGROVE ROAD
- 4 M. CAIN ROAD (ALTERNATE NO. 3)
- 5 WHELAN ROAD
- 6 US 60
- 7 FARRIS ROAD
- 8 KY 1638 - GARRETT ROAD
- 9 SPIKE BUCK DRIVE
- 9A FORK HORN LANE & DOE COURT
- 10 FAWN LANE
- 10A WHITE TAIL COURT



ISSUE	DATE	DESCRIPTION

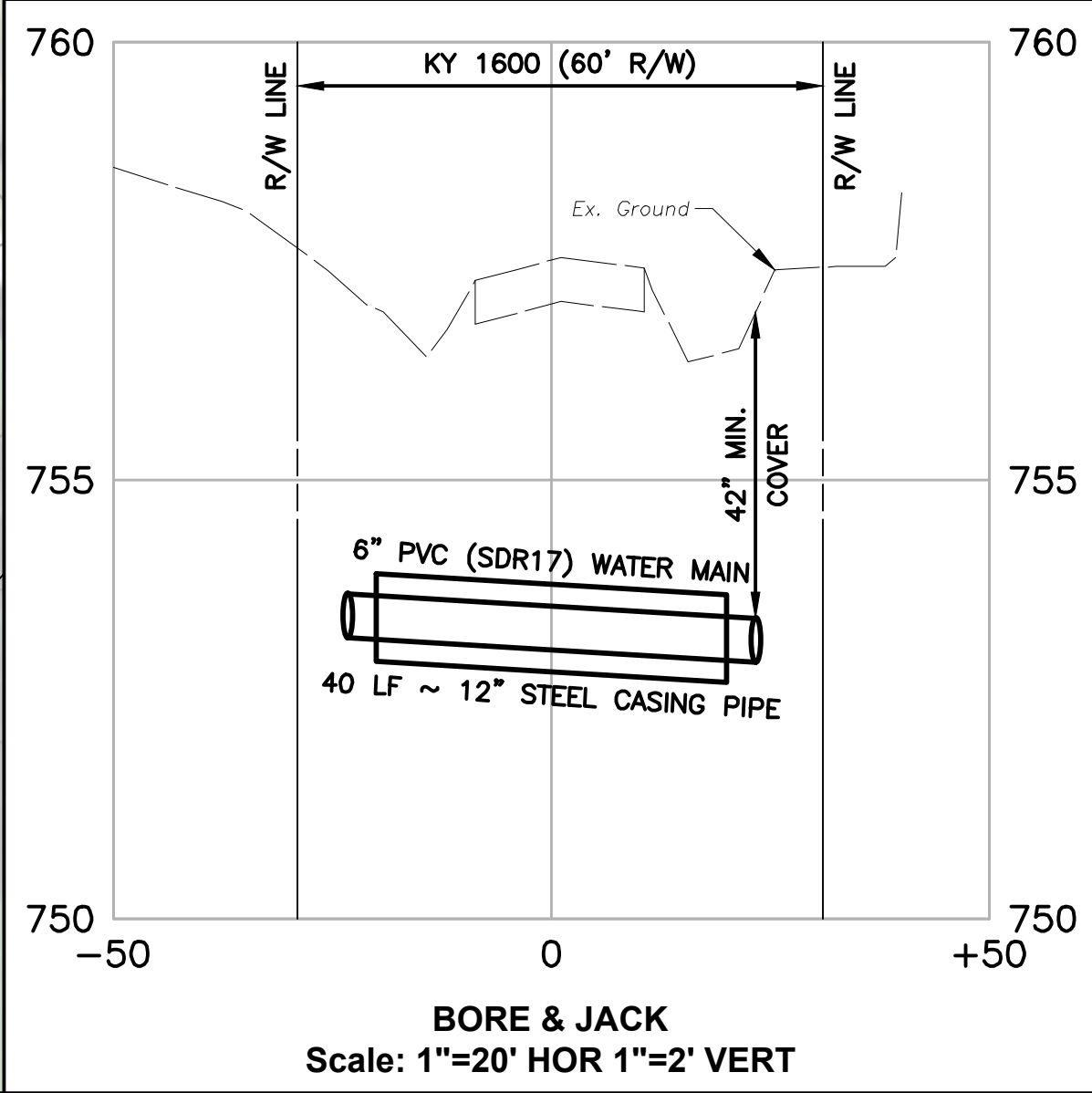
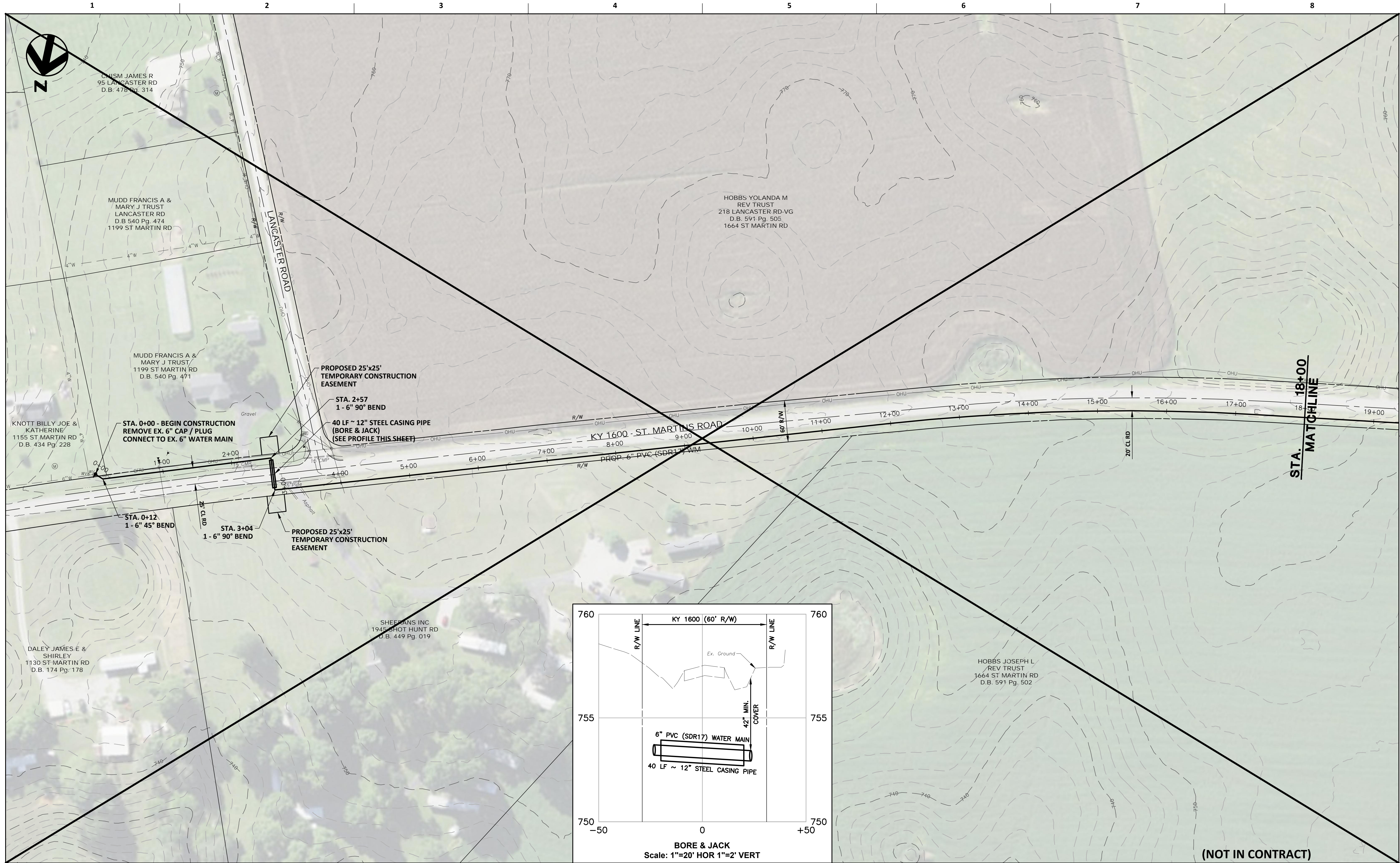
PROJECT MANAGER	KEVIN J. BRIAN
DESIGNED BY	KEVIN J. BRIAN
DRAWN BY	WILLIAM M. GUMM
QA / QC	MIKE HANSEN
PROJECT NUMBER	10175028



**MEADE COUNTY WATER DISTRICT
2019 WATER SYSTEM IMPROVEMENTS
MEADE COUNTY, KENTUCKY**

0 4000' 8000' FILENAME G-03.dwg
SCALE 1" = 4000'

**GENERAL
PLAN INDEX SHEET**



(NOT IN CONTRACT)



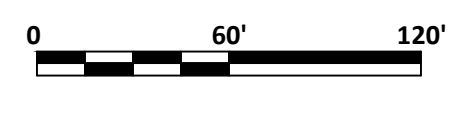
ISSUE	DATE	DESCRIPTION

PROJECT MANAGER	KEVIN J. BRIAN
DESIGNED BY	KEVIN J. BRIAN
DRAWN BY	WILLIAM M. GUMM
QA / QC	MIKE HANSEN
PROJECT NUMBER	10175028



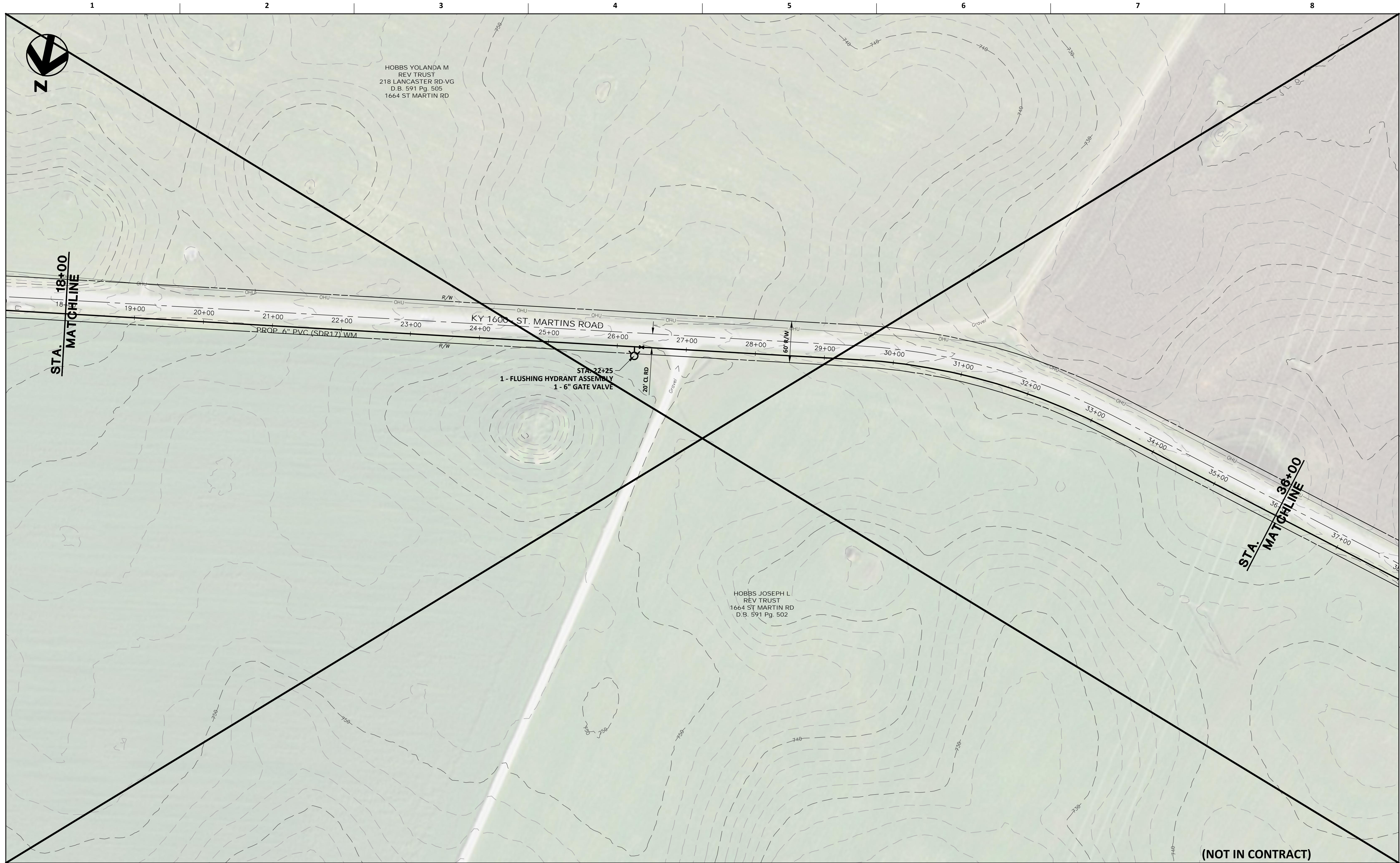
**MEADE COUNTY WATER DISTRICT
2019 WATER SYSTEM IMPROVEMENTS
PROPOSED LINE EXTENSIONS**

**LINE "A"
KY 1600 - ST. MARTINS ROAD
PLAN SHEET
STA. 0+00 TO STA. 18+00**

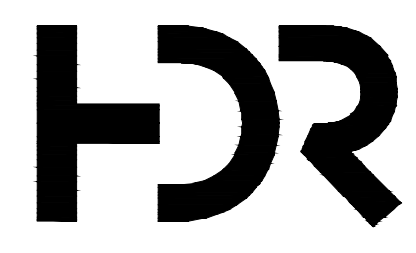


FILENAME | Plan-A.dwg
SCALE | 1" = 60'

SHEET
C-01



(NOT IN CONTRACT)



ISSUE	DATE	DESCRIPTION

PROJECT MANAGER	KEVIN J. BRIAN
DESIGNED BY	KEVIN J. BRIAN
DRAWN BY	WILLIAM M. GUMM
QA / QC	MIKE HANSEN
PROJECT NUMBER	10175028



**MEADE COUNTY WATER DISTRICT
2019 WATER SYSTEM IMPROVEMENTS
PROPOSED LINE EXTENSIONS**

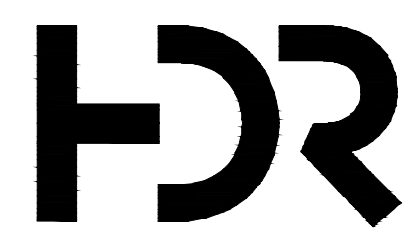
0 60' 120'
SCALE 1" = 60'

**LINE "A"
KY 1600 - ST. MARTINS ROAD
PLAN SHEET
STA. 18+00 TO STA. 36+00**

FILENAME Plan-A.dwg
SHEET C-02



(NOT IN CONTRACT)

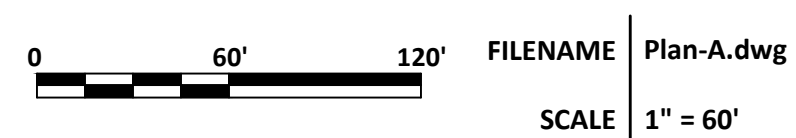


ISSUE	DATE	DESCRIPTION

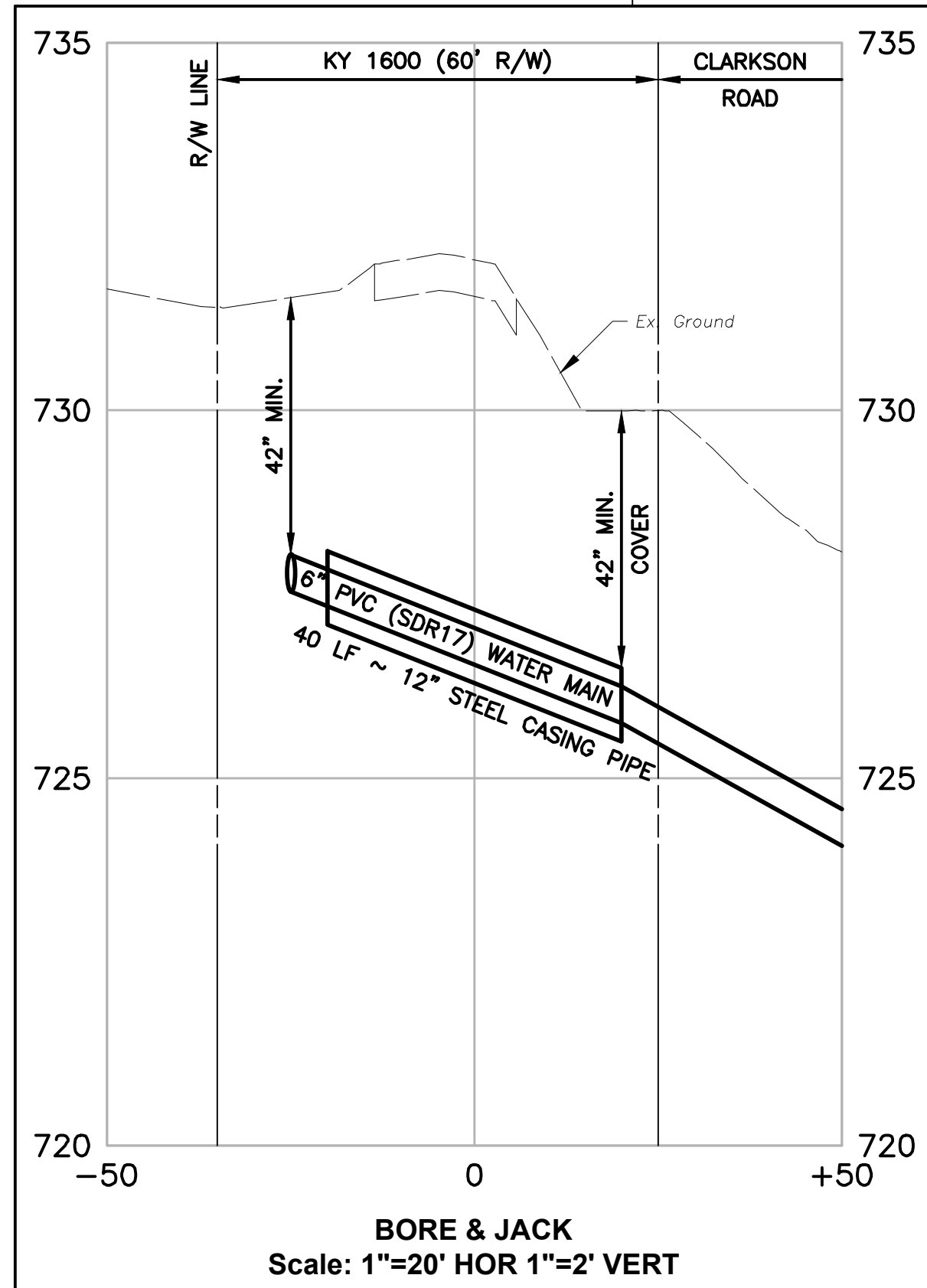
PROJECT MANAGER	KEVIN J. BRIAN
DESIGNED BY	KEVIN J. BRIAN
DRAWN BY	WILLIAM M. GUMM
QA / QC	MIKE HANSEN
PROJECT NUMBER	10175028



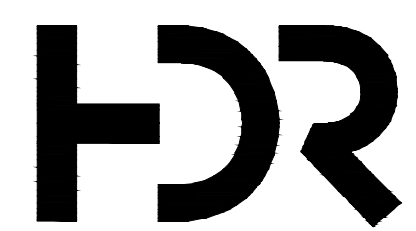
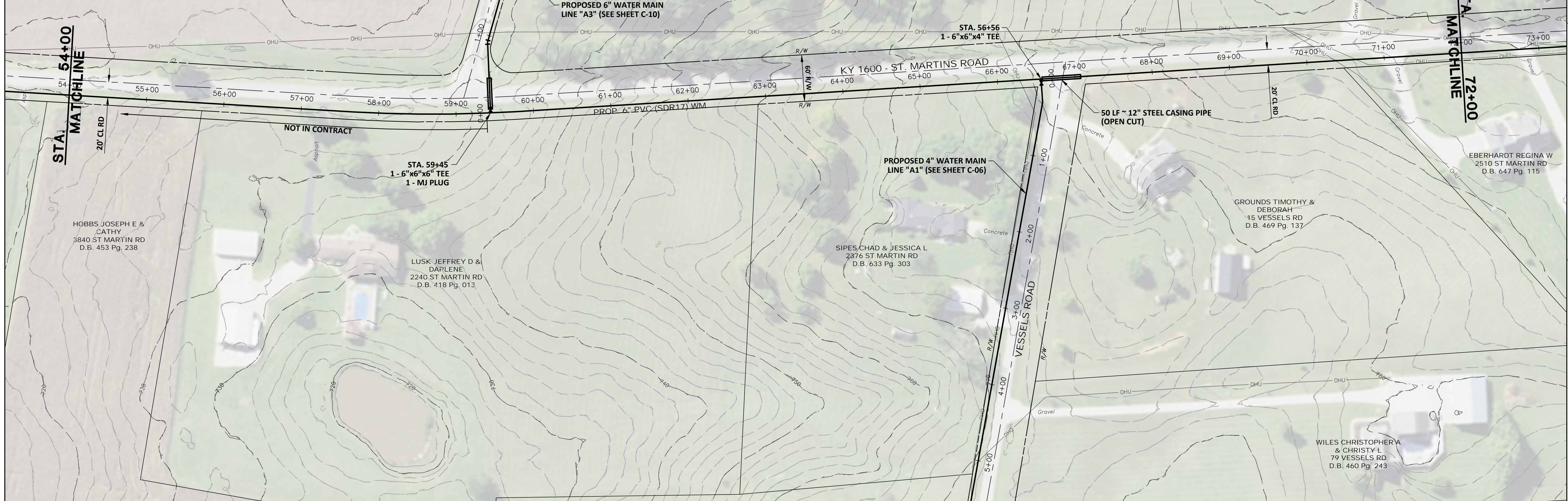
**MEADE COUNTY WATER DISTRICT
2019 WATER SYSTEM IMPROVEMENTS
PROPOSED LINE EXTENSIONS**



**LINE "A"
KY 1600 - ST. MARTINS ROAD
PLAN SHEET
STA. 36+00 TO STA. 54+00**



BORE & JACK
Scale: 1"=20' HOR 1"=2' VERT



ISSUE	DATE	DESCRIPTION

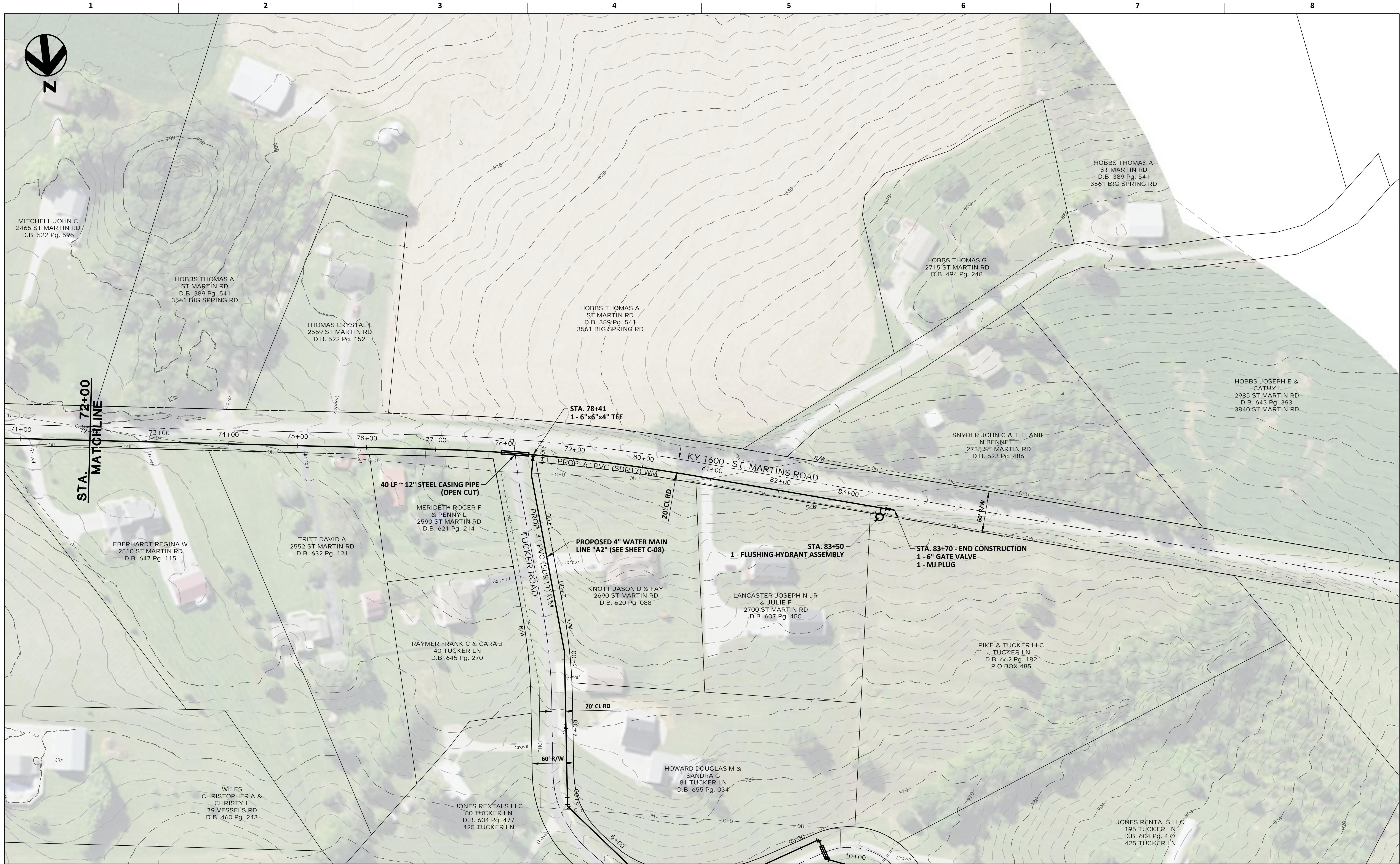
PROJECT MANAGER	KEVIN J. BRIAN
DESIGNED BY	KEVIN J. BRIAN
DRAWN BY	WILLIAM M. GUMM
QA / QC	MIKE HANSEN
PROJECT NUMBER	10175028



**MEADE COUNTY WATER DISTRICT
2019 WATER SYSTEM IMPROVEMENTS
PROPOSED LINE EXTENSIONS**



**LINE "A"
KY 1600 - ST. MARTINS ROAD
PLAN SHEET
STA. 54+00 TO STA. 72+00**



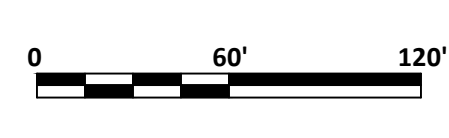
STA. MATCHLINE
72+00

PROJECT MANAGER	KEVIN J. BRIAN
DESIGNED BY	KEVIN J. BRIAN
DRAWN BY	WILLIAM M. GUMM
QA / QC	MIKE HANSEN
PROJECT NUMBER	10175028



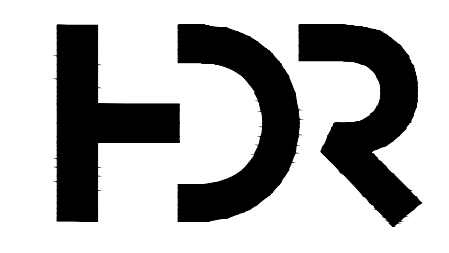
**MEADE COUNTY WATER DISTRICT
2019 WATER SYSTEM IMPROVEMENTS
PROPOSED LINE EXTENSIONS**

**LINE "A"
KY 1600 - ST. MARTINS ROAD
PLAN SHEET
STA. 72+00 TO STA. 83+50**

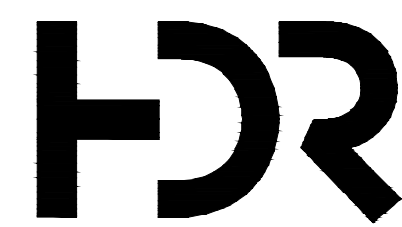
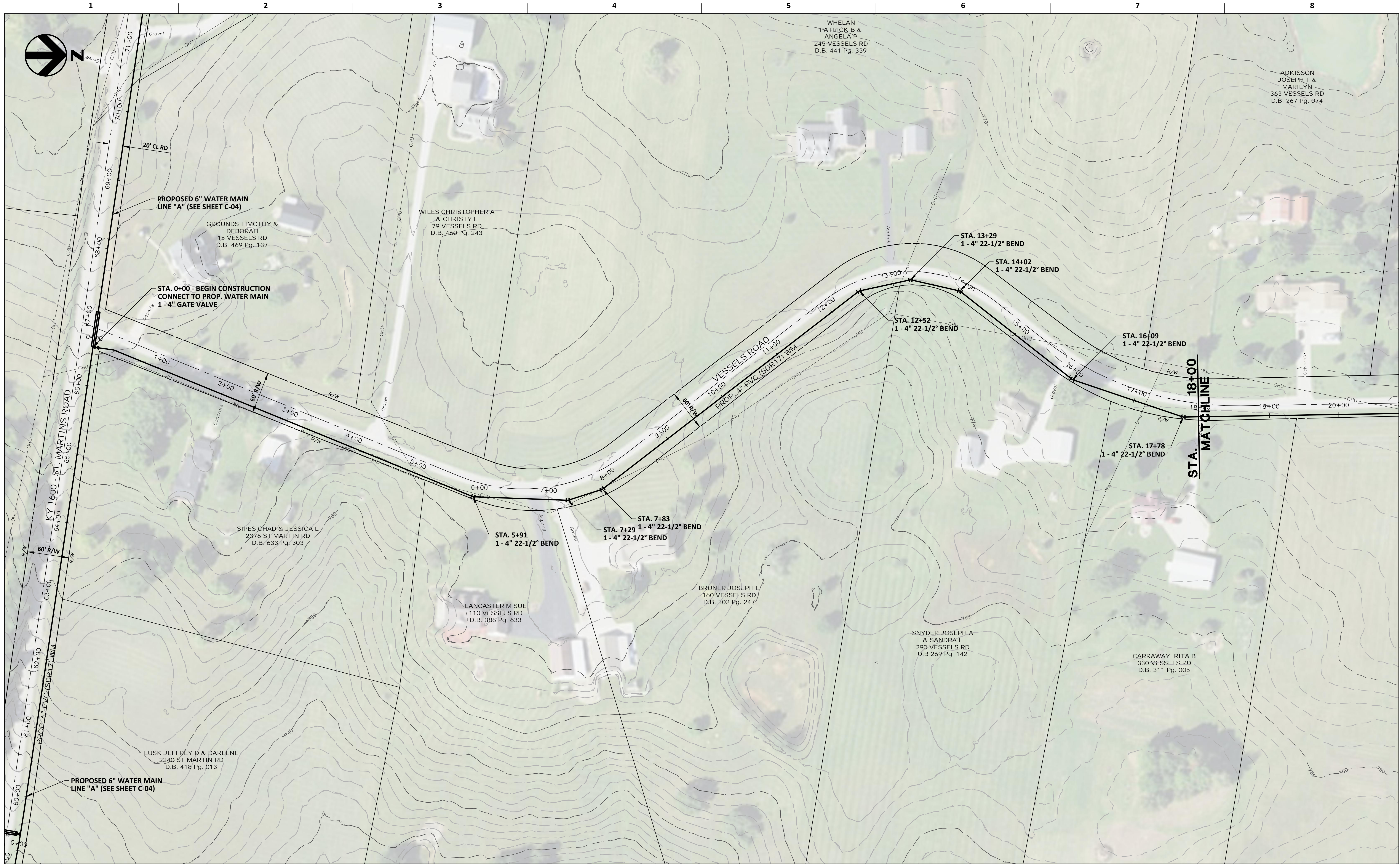


FILENAME | Plan-A.dwg
SCALE | 1" = 60'

SHEET
C-05



ISSUE	DATE	DESCRIPTION

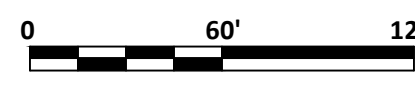


ISSUE	DATE	DESCRIPTION

PROJECT MANAGER	KEVIN J. BRIAN
DESIGNED BY	KEVIN J. BRIAN
DRAWN BY	WILLIAM M. GUMM
QA / QC	MIKE HANSEN
PROJECT NUMBER	10175028



**MEADE COUNTY WATER DISTRICT
2019 WATER SYSTEM IMPROVEMENTS
PROPOSED LINE EXTENSIONS**



**LINE "A1"
VESSELS ROAD
PLAN SHEET
STA. 0+00 TO STA. 18+00**

FILENAME | Plan-A.dwg
SCALE | 1" = 60'

SHEET
C-06



ADKISSON
JOSEPH T &
MARILYN
363 VESSELS RD
D.B. 267 Pg. 074

BOARD RUDY L
& DARLENE
409 VESSELS RD
D.B. 125 Pg. 495

HUBBARD MARK
A & JEAN E
485 VESSELS RD
D.B. 396 Pg. 390

SCHAFFNER C H &
PATRICIA
555 VESSELS RD
D.B. 302 Pg. 252

MEYER HARRY M &
JACKIE S
550 VESSELS RD
D.B. 397 Pg. 272
P.O. BOX 353

REMSBURG
HAROLD & MARY C
540 VESSELS RD
D.B. 210 Pg. 092

CASTER BRUCE
& JERRI L
424 VESSELS RD
D.B. 284 Pg. 085

CARRAWAY RITA B
330 VESSELS RD
D.B. 311 Pg. 005

VOWELS NORMAN L
& SHERRY
520 VESSELS RD
D.B. 411 Pg. 003

CASTER BRUCE L SR
& JERRI L
470 VESSELS RD
D.B. 426 Pg. 197
424 VESSELS RD

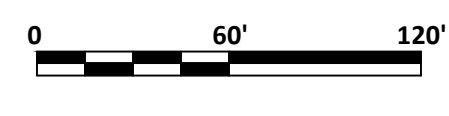


PROJECT MANAGER	KEVIN J. BRIAN
DESIGNED BY	KEVIN J. BRIAN
DRAWN BY	WILLIAM M. GUMM
QA / QC	MIKE HANSEN
PROJECT NUMBER	10175028

ISSUE	DATE	DESCRIPTION



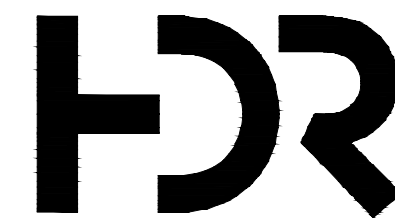
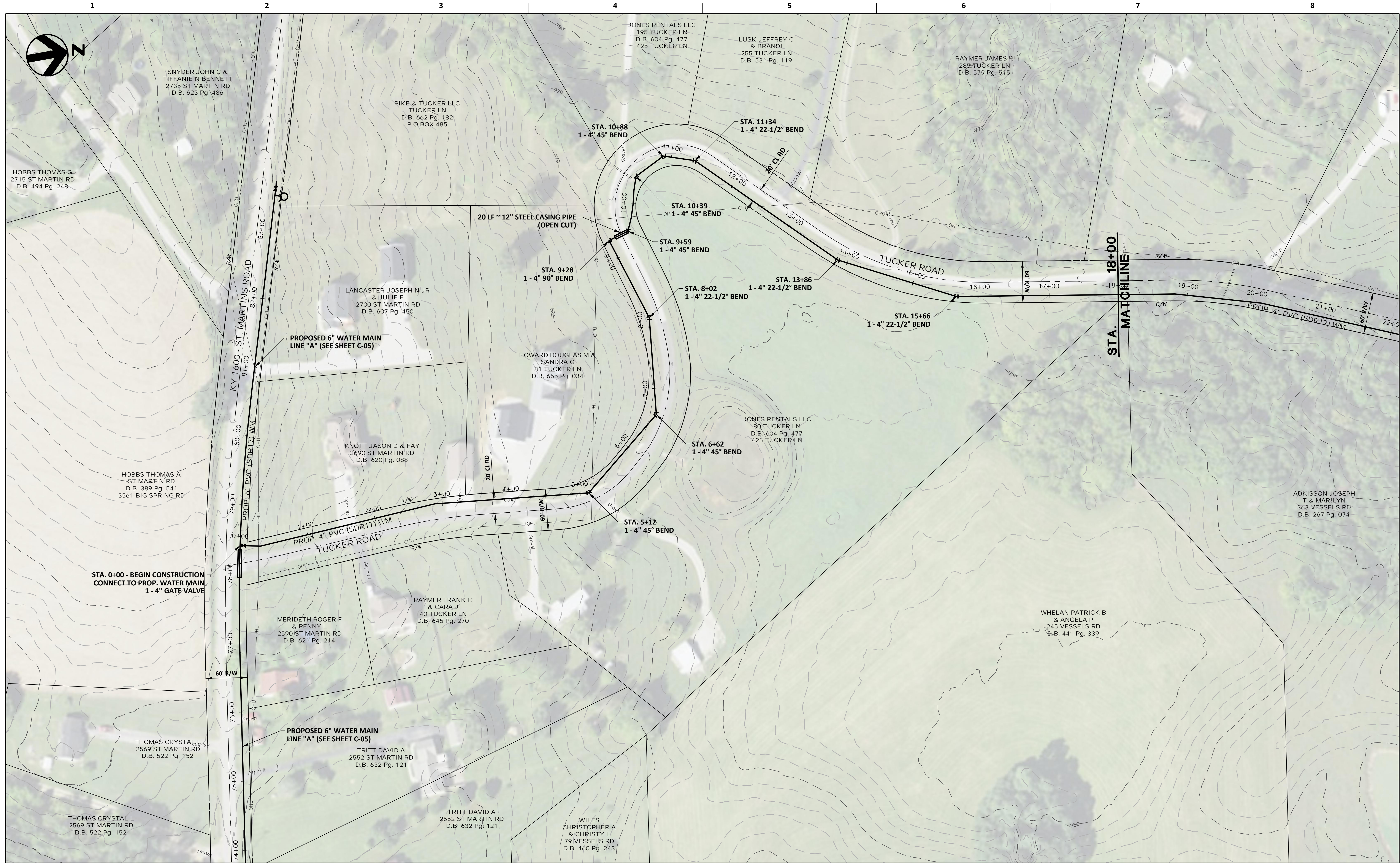
**MEADE COUNTY WATER DISTRICT
2019 WATER SYSTEM IMPROVEMENTS
PROPOSED LINE EXTENSIONS**



**LINE "A1"
VESSELS ROAD
PLAN SHEET
STA. 18+00 TO STA. 30+00**

FILENAME | Plan-A.dwg
SCALE | 1" = 60'

SHEET
C-07



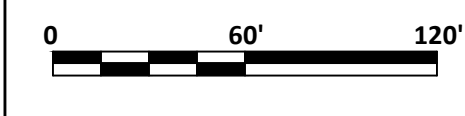
ISSUE	DATE	DESCRIPTION

PROJECT MANAGER	KEVIN J. BRIAN
DESIGNED BY	KEVIN J. BRIAN
DRAWN BY	WILLIAM M. GUMM
QA / QC	MIKE HANSEN
PROJECT NUMBER	10175028



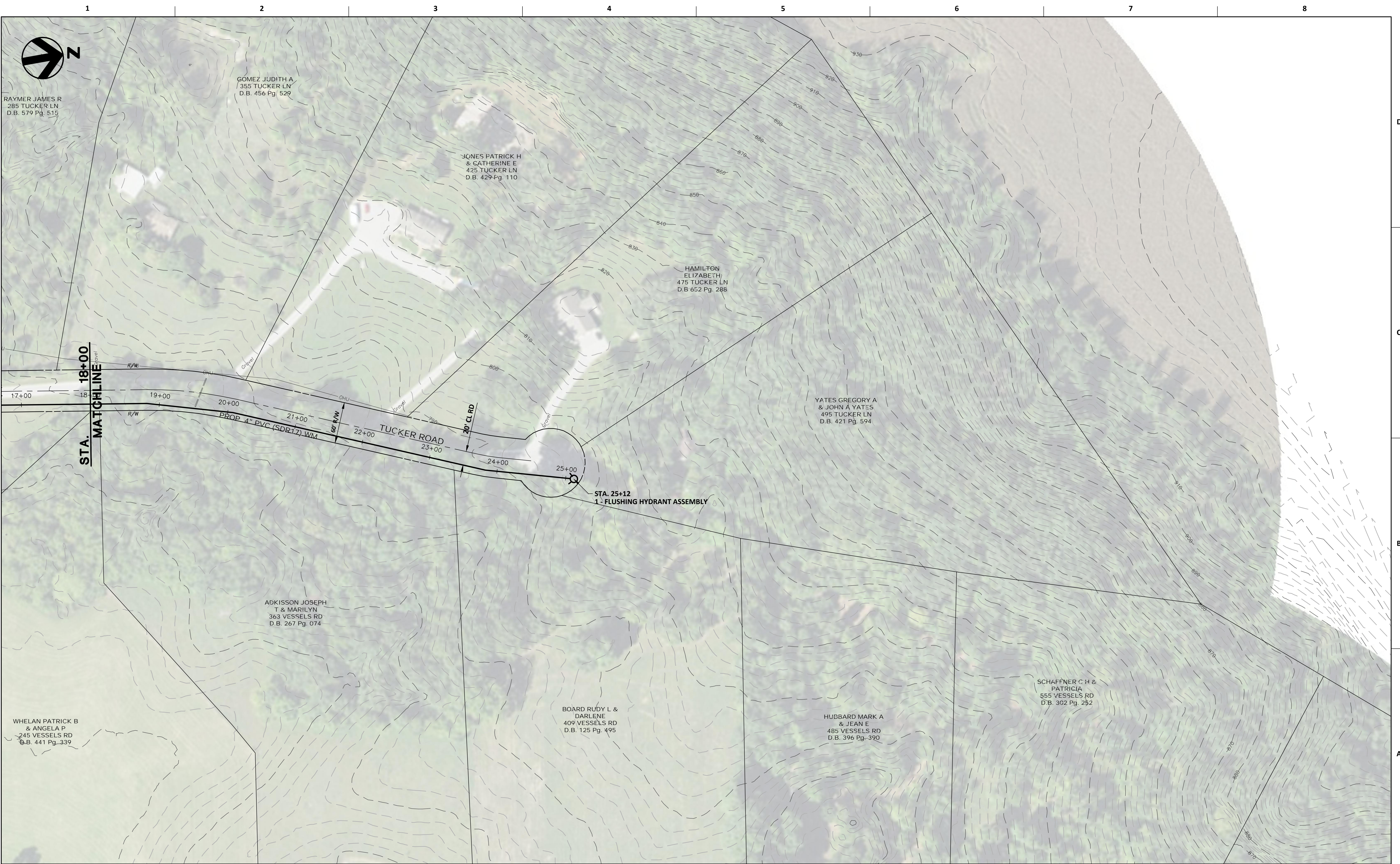
**MEADE COUNTY WATER DISTRICT
2019 WATER SYSTEM IMPROVEMENTS
PROPOSED LINE EXTENSIONS**

**LINE "A2"
TUCKER ROAD
PLAN SHEET
STA. 0+00 TO STA. 18+00**



FILENAME | Plan-A.dwg
SCALE | 1" = 60'

SHEET
C-08



RAYMER JAMES R
285 TUCKER LN
D.B. 579 Pg. 515

GOMEZ JUDITH A
355 TUCKER LN
D.B. 456 Pg. 529

JONES PATRICK H
& CATHERINE E
425 TUCKER LN
D.B. 429 Pg. 110

HAMILTON
ELIZABETH
475 TUCKER LN
D.B. 652 Pg. 288

YATES GREGORY A
& JOHN A YATES
495 TUCKER LN
D.B. 421 Pg. 594

ADKISSON JOSEPH
T & MARILYN
363 VESSELS RD
D.B. 267 Pg. 074

BOARD RUDY L &
DARLENE
409 VESSELS RD
D.B. 125 Pg. 495

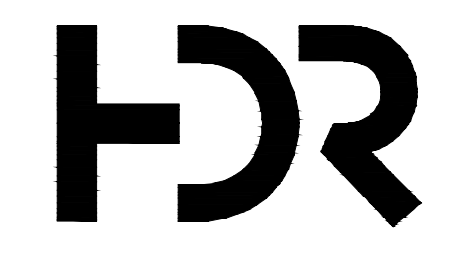
HUBBARD MARK A
& JEAN E
485 VESSELS RD
D.B. 396 Pg. 390

SCHAFFNER C H &
PATRICIA
555 VESSELS RD
D.B. 302 Pg. 252

WHELAN PATRICK B
& ANGELA P
245 VESSELS RD
D.B. 441 Pg. 339

STA. 18+00
MATCHLINE

STA. 25+12
1 - FLUSHING HYDRANT ASSEMBLY

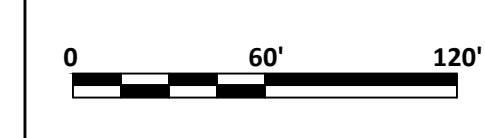


ISSUE	DATE	DESCRIPTION

PROJECT MANAGER	KEVIN J. BRIAN
DESIGNED BY	KEVIN J. BRIAN
DRAWN BY	WILLIAM M. GUMM
QA / QC	MIKE HANSEN
PROJECT NUMBER	10175028



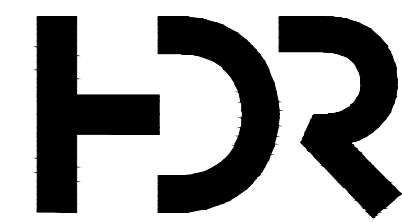
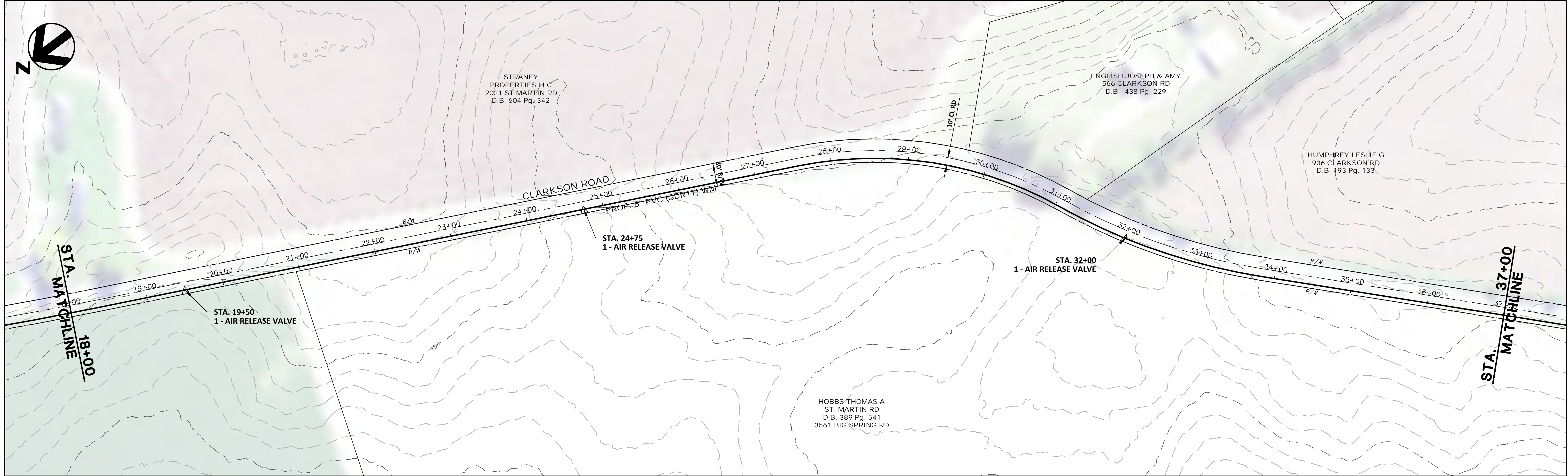
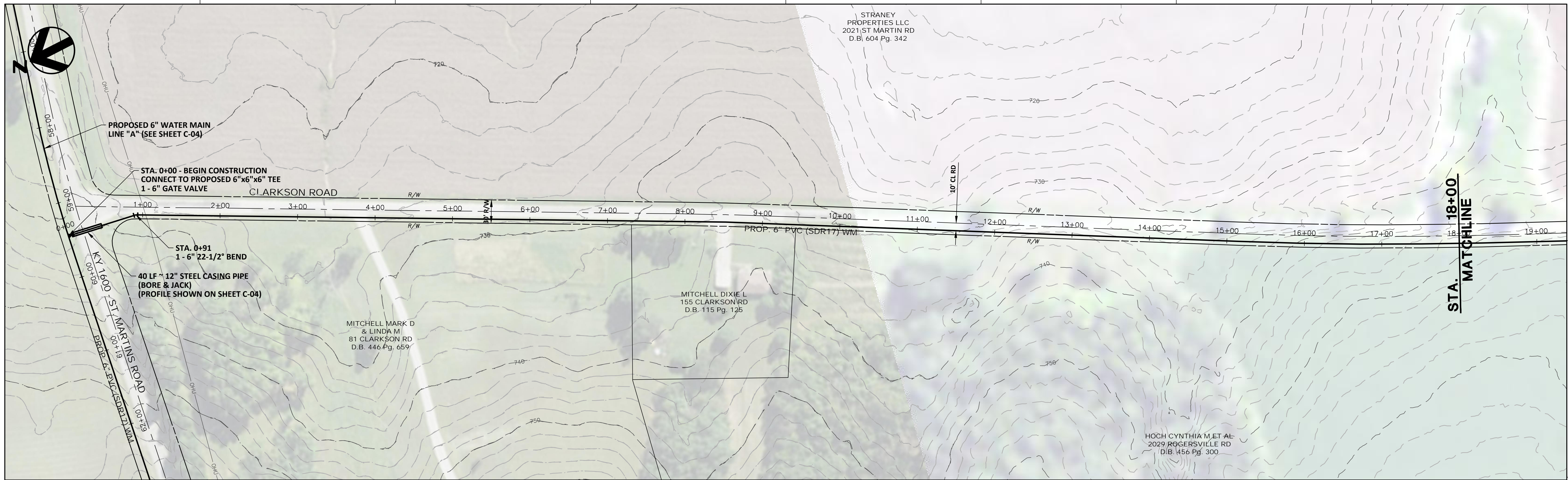
MEADE COUNTY WATER DISTRICT
2019 WATER SYSTEM IMPROVEMENTS
PROPOSED LINE EXTENSIONS



LINE "A2"
TUCKER ROAD
PLAN SHEET
STA. 18+00 TO STA. 25+50

FILENAME | Plan-A.dwg
SCALE | 1" = 60'

SHEET
C-09

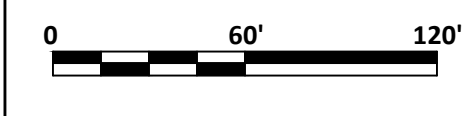


ISSUE	DATE	DESCRIPTION

PROJECT MANAGER	KEVIN J. BRIAN
DESIGNED BY	KEVIN J. BRIAN
DRAWN BY	WILLIAM M. GUMM
QA / QC	MIKE HANSEN
PROJECT NUMBER	10175028



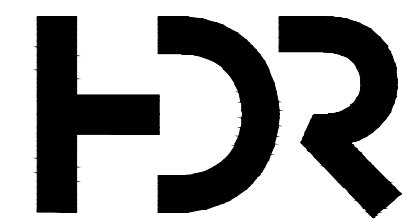
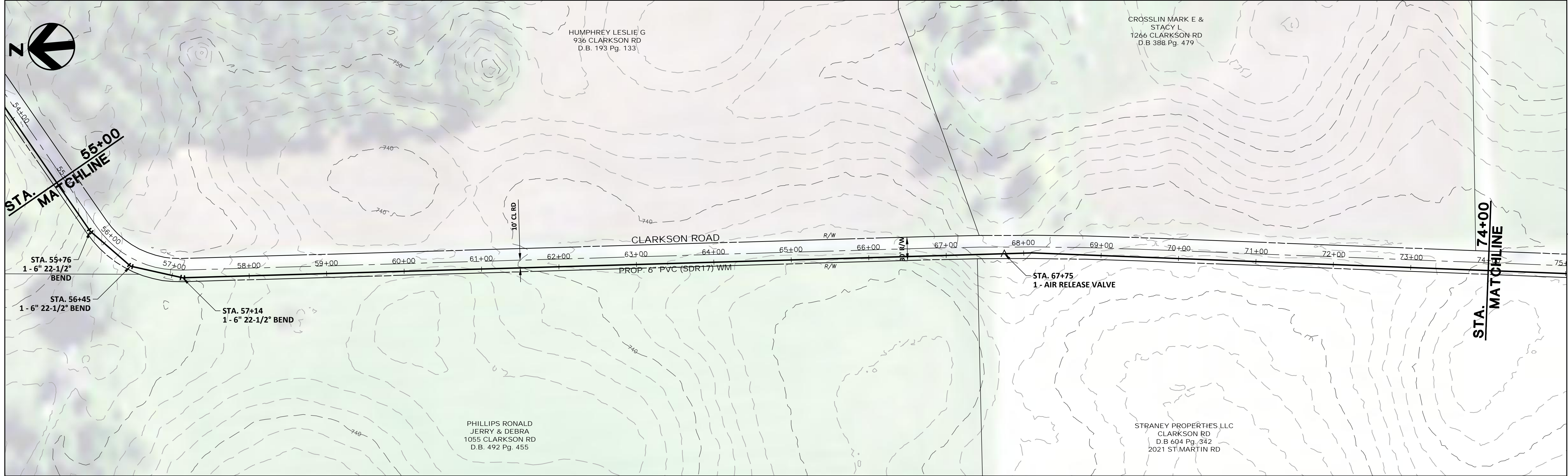
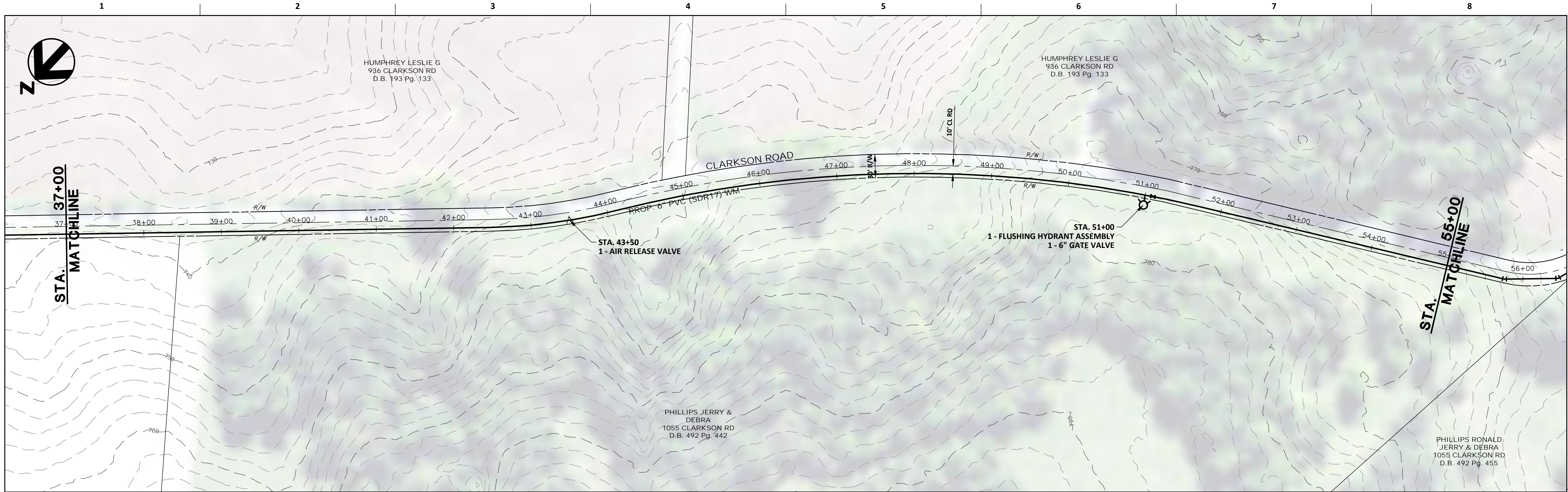
**MEADE COUNTY WATER DISTRICT
2019 WATER SYSTEM IMPROVEMENTS
PROPOSED LINE EXTENSIONS**



**LINE "A3"
CLARKSON ROAD
PLAN SHEET
STA. 0+00 TO STA. 37+00**

FILENAME | Plan-A.dwg
SCALE | 1" = 60'

SHEET
C-10

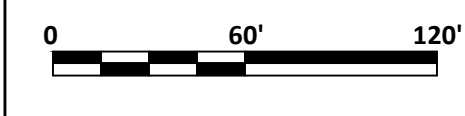


ISSUE	DATE	DESCRIPTION

PROJECT MANAGER	KEVIN J. BRIAN
DESIGNED BY	KEVIN J. BRIAN
DRAWN BY	WILLIAM M. GUMM
QA / QC	MIKE HANSEN
PROJECT NUMBER	10175028



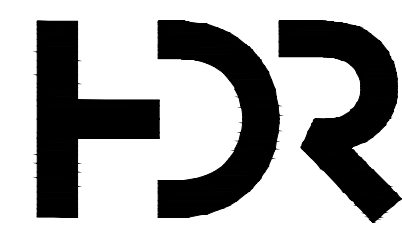
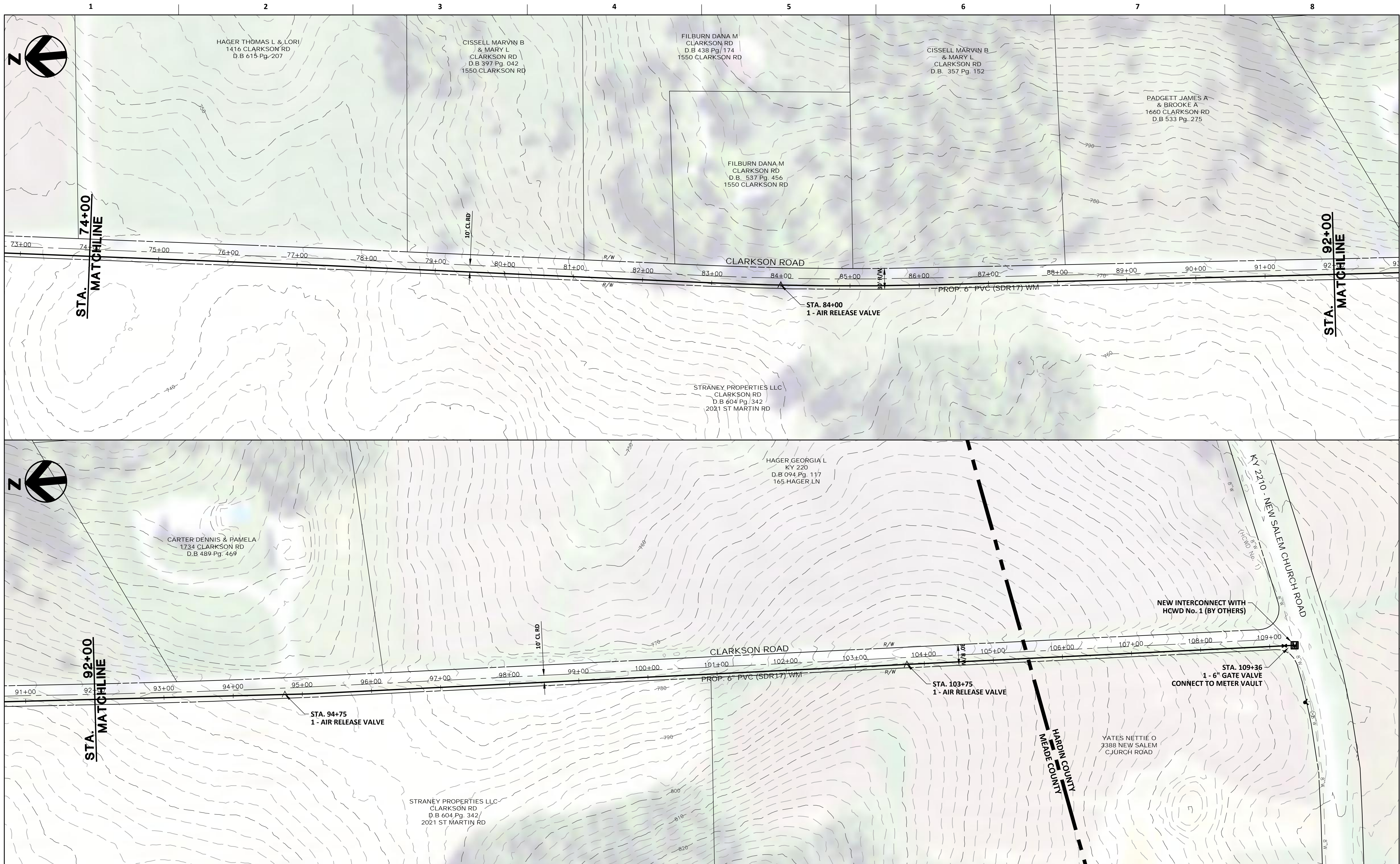
**MEADE COUNTY WATER DISTRICT
2019 WATER SYSTEM IMPROVEMENTS
PROPOSED LINE EXTENSIONS**



**LINE "A3"
CLARKSON ROAD
PLAN SHEET
STA. 37+00 TO STA. 74+00**

FILENAME | Plan-A.dwg
SCALE | 1" = 60'

SHEET
C-11

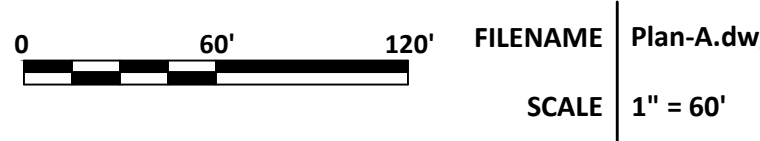


ISSUE	DATE	DESCRIPTION

PROJECT MANAGER	KEVIN J. BRIAN
DESIGNED BY	KEVIN J. BRIAN
DRAWN BY	WILLIAM M. GUMM
QA / QC	MIKE HANSEN
PROJECT NUMBER	10175028

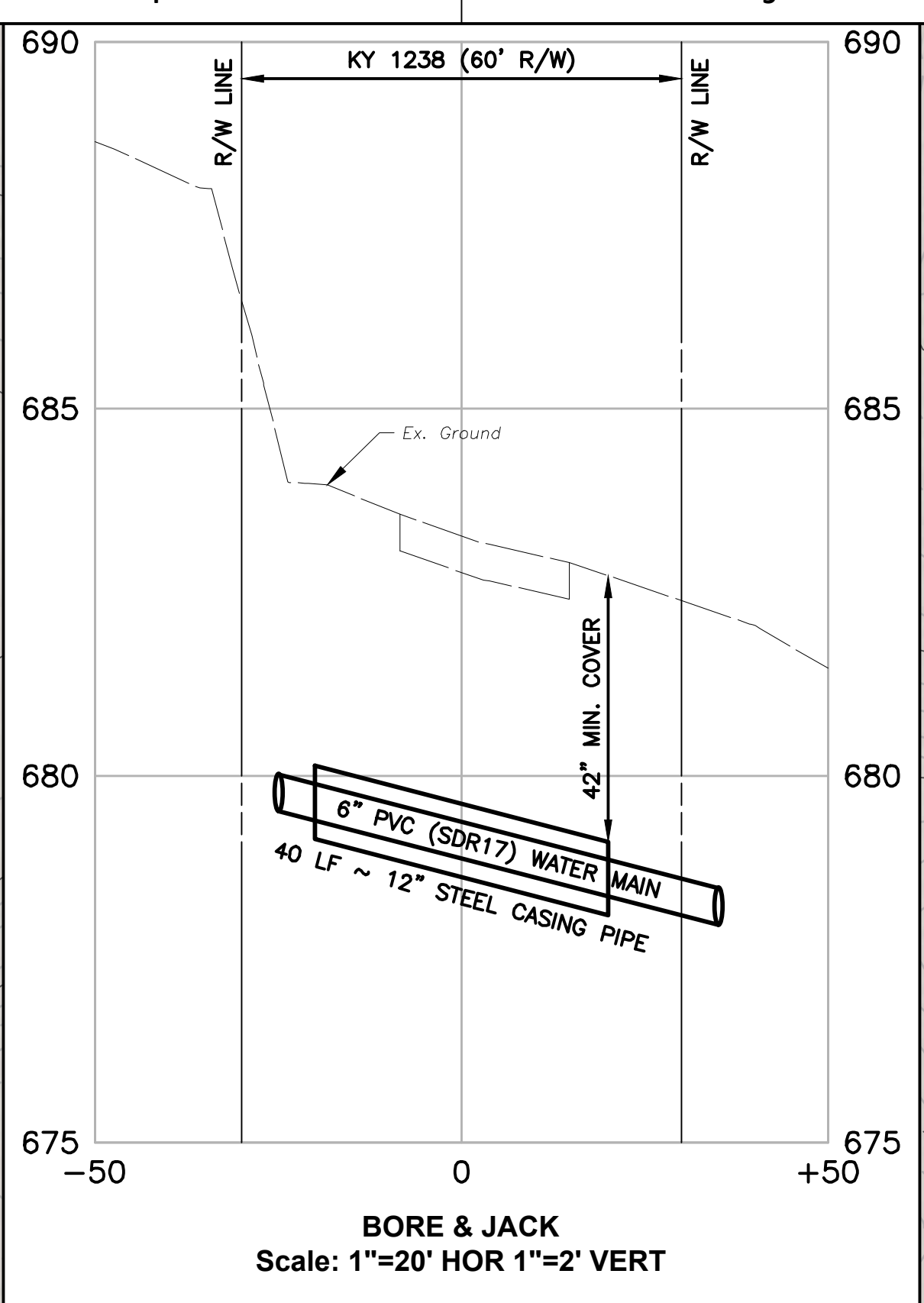
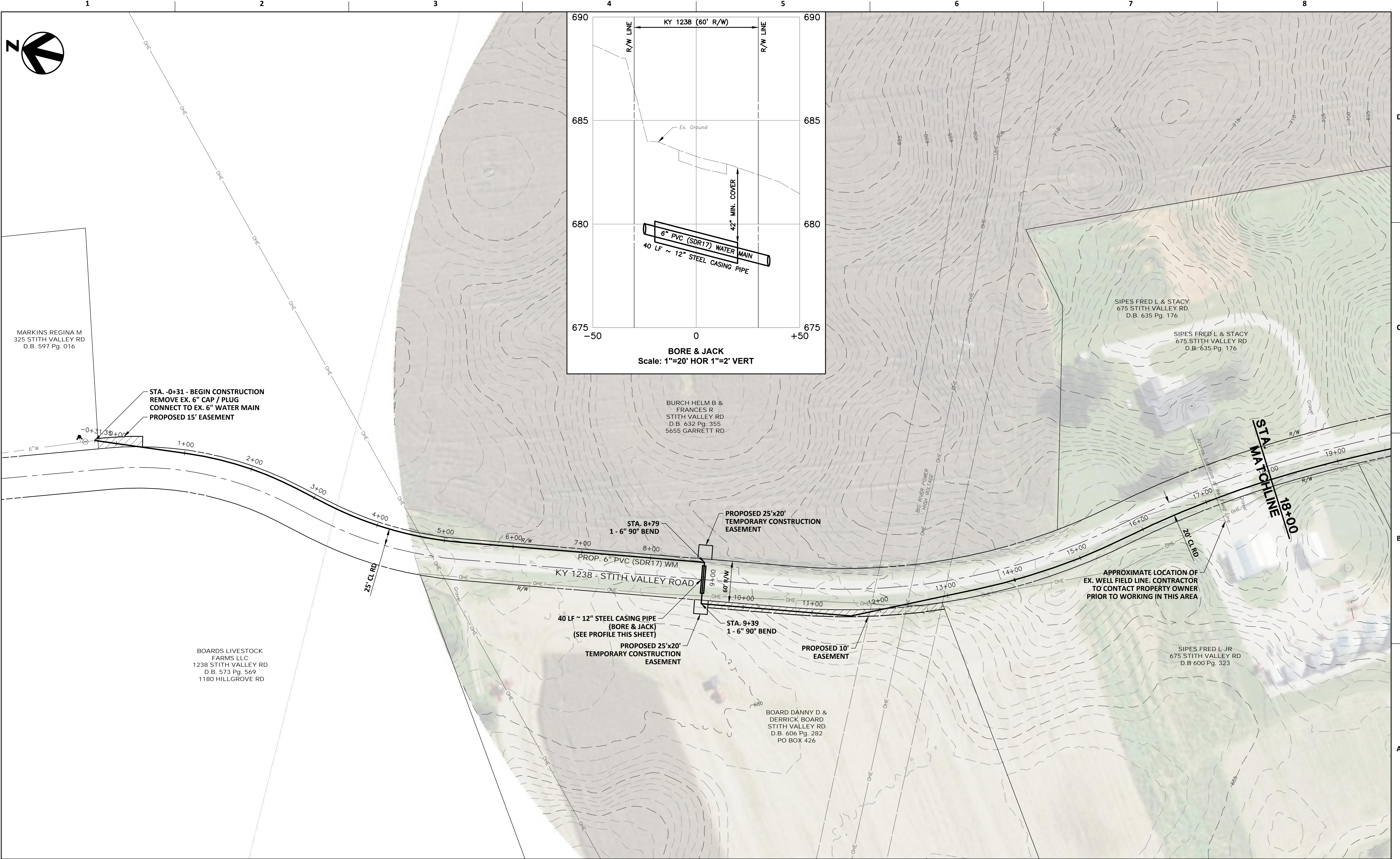


**MEADE COUNTY WATER DISTRICT
2019 WATER SYSTEM IMPROVEMENTS
PROPOSED LINE EXTENSIONS**



**LINE "A3"
CLARKSON ROAD
PLAN SHEET
STA. 74+00 TO STA. 109+50**

FILENAME | Plan-A.dwg
SCALE | 1" = 60'



MARKINS REGINA M
325 STITH VALLEY RD
D.B. 597 Pg. 016

STA. -0+31 - BEGIN CONSTRUCTION
REMOVE EX. 6\"/>

BOARDS LIVESTOCK
FARMS LLC
1238 STITH VALLEY RD
D.B. 573 Pg. 569
1180 HILLGROVE RD

BURCH HELM B &
FRANCES R
STITH VALLEY RD
D.B. 632 Pg. 355
5655 GARRETT RD

SIPES FRED L & STACY
675 STITH VALLEY RD
D.B. 635 Pg. 176

SIPES FRED L & STACY
675 STITH VALLEY RD
D.B. 635 Pg. 176

STA. 8+79
1 - 6\"/>

PROPOSED 25'x20'
TEMPORARY CONSTRUCTION
EASEMENT

40 LF ~ 12\"/>

PROPOSED 25'x20'
TEMPORARY CONSTRUCTION
EASEMENT

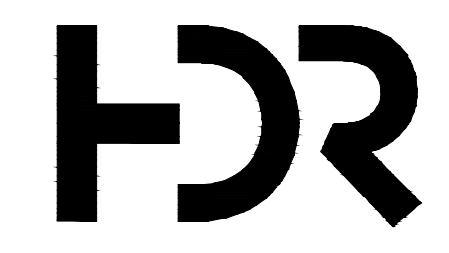
STA. 9+39
1 - 6\"/>

PROPOSED 10'
EASEMENT

APPROXIMATE LOCATION OF
EX. WELL FIELD LINE. CONTRACTOR
TO CONTACT PROPERTY OWNER
PRIOR TO WORKING IN THIS AREA

SIPES FRED L JR
675 STITH VALLEY RD
D.B. 600 Pg. 323

BOARD DANNY D &
DERRICK BOARD
STITH VALLEY RD
D.B. 606 Pg. 282
PO BOX 426

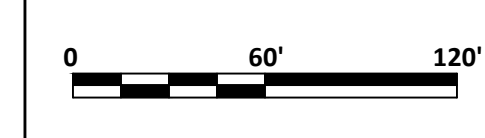


ISSUE	DATE	DESCRIPTION

PROJECT MANAGER	KEVIN J. BRIAN
DESIGNED BY	KEVIN J. BRIAN
DRAWN BY	WILLIAM M. GUMM
QA / QC	MIKE HANSEN
PROJECT NUMBER	10175028



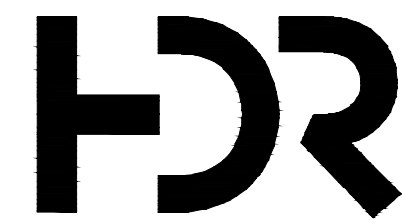
MEADE COUNTY WATER DISTRICT
2019 WATER SYSTEM IMPROVEMENTS
PROPOSED LINE EXTENSIONS



LINE "B"
KY 1238 - STITH VALLEY ROAD
PLAN SHEET
STA. 0+00 TO STA. 18+00

FILENAME | Plan-B.dwg
SCALE | 1" = 60'

SHEET
C-13

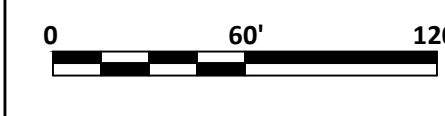


ISSUE	DATE	DESCRIPTION

PROJECT MANAGER	KEVIN J. BRIAN
DESIGNED BY	KEVIN J. BRIAN
DRAWN BY	WILLIAM M. GUMM
QA / QC	MIKE HANSEN
PROJECT NUMBER	10175028



**MEADE COUNTY WATER DISTRICT
2019 WATER SYSTEM IMPROVEMENTS
PROPOSED LINE EXTENSIONS**



FILENAME | Plan-B.dwg
SCALE | 1" = 60'

SHEET
C-14

**LINE "B"
KY 1238 - STITH VALLEY ROAD
PLAN SHEET
STA. 18+00 TO STA. 36+00**



STA. MATCHLINE
36+00

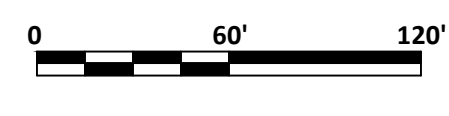
STA. MATCHLINE
54+00

PROJECT MANAGER	KEVIN J. BRIAN
DESIGNED BY	KEVIN J. BRIAN
DRAWN BY	WILLIAM M. GUMM
QA / QC	MIKE HANSEN
PROJECT NUMBER	10175028



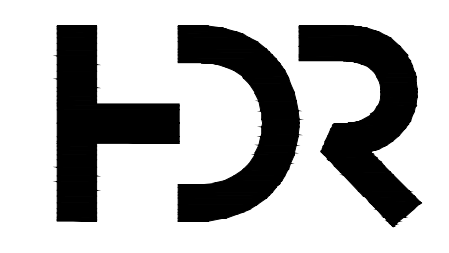
**MEADE COUNTY WATER DISTRICT
2019 WATER SYSTEM IMPROVEMENTS
PROPOSED LINE EXTENSIONS**

**LINE "B"
KY 1238 - STITH VALLEY ROAD
PLAN SHEET
STA. 36+00 TO STA. 54+00**

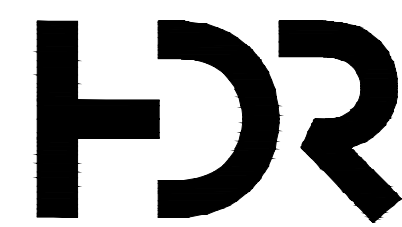


FILENAME | Plan-B.dwg
SCALE | 1" = 60'

SHEET
C-15



ISSUE	DATE	DESCRIPTION



ISSUE	DATE	DESCRIPTION

PROJECT MANAGER	KEVIN J. BRIAN
DESIGNED BY	KEVIN J. BRIAN
DRAWN BY	WILLIAM M. GUMM
QA / QC	MIKE HANSEN
PROJECT NUMBER	10175028



**MEADE COUNTY WATER DISTRICT
2019 WATER SYSTEM IMPROVEMENTS
PROPOSED LINE EXTENSIONS**

**LINE "B"
KY 1238 - STITH VALLEY ROAD / SPRINGDALE ROAD
PLAN SHEET
STA. 54+00 TO STA. 77+00**

FILENAME: Plan-B.dwg
 SCALE: 1" = 60'
 SHEET: **C-16**



SMYTH ROBERT F
JR & BONNIE S
95 SPRINGDALE RD
D.B. 383 Pg. 279

AMMONS ROBERT K
& MADONNA S
175 SPRINGDALE RD
D.B. 652 Pg. 369

AMMONS ROBERT K
& MADONNA S
175 SPRINGDALE RD
D.B. 395 Pg. 047

COTTRILL LOVELL
260 SPRINGDALE RD
D.B. 433 Pg. 434

HOBBS JOSEPH L
REV TRUST
1664 ST MARTIN RD
D.B. 591 Pg. 502

KESSINGER THOMAS
L & CELIA ANN
SPRINGDALE RD
D.B. 411 Pg. 232
119 PRAIRIE VIEW CT

COLTES ADAM &
KORI A
385 SPRINGDALE RD
D.B. 630 Pg. 281

PRATHER PAUL
SPRINGDALE RD
D.B. 53 Pg. 060
3155 FLAHERTY RD

HOBBS JOSEPH L
REV TRUST
1664 ST MARTIN RD
D.B. 591 Pg. 562

LASTER CLIFFORD A
& KATHRYN S
120 SPRINGDALE RD
D.B. 406 Pg. 135

WENGER TIMOTHY & PATRICIA
150 SPRINGDALE RD
D.B. 351 Pg. 094

COTTRILL LOVELL
260 SPRINGDALE RD
D.B. 433 Pg. 434

HAGER JAMES L &
BROOKE E
350 SPRINGDALE RD
D.B. 514 Pg. 410

CARSON KRISTI
460 SPRINGDALE RD
D.B. 642 Pg. 391

MYATT ADAM
411 SPRINGDALE RD
D.B. 639 Pg. 231

GROH JAMISON &
ASHLEY
465 SPRINGDALE RD
D.B. 654 Pg. 321

STA. 77+00
MATCHLINE

STA. 82+39
1 - 4" 22-1/2° BEND

STA. 86+46
1 - 4" 22-1/2° BEND

STA. 89+48
1 - 4" 45° BEND

STA. 90+92
1 - 4" 45° BEND

STA. 95+16 - END CONSTRUCTION
1 - FLUSHING HYDRANT ASSEMBLY



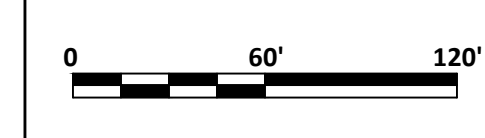
ISSUE	DATE	DESCRIPTION

PROJECT MANAGER	KEVIN J. BRIAN
DESIGNED BY	KEVIN J. BRIAN
DRAWN BY	WILLIAM M. GUMM
QA / QC	MIKE HANSEN
PROJECT NUMBER	10175028



MEADE COUNTY WATER DISTRICT
2019 WATER SYSTEM IMPROVEMENTS
PROPOSED LINE EXTENSIONS

LINE "B"
SPRINGDALE ROAD
PLAN SHEET
STA. 77+00 TO STA. 95+00



FILENAME | Plan-B.dwg
SCALE | 1" = 60'

SHEET
C-17