

2019 Water System Improvements Project

Final Engineering Report
Meade County Water District



February 2021




2/25/21

*Final Engineering Report
2019 Water System Improvements
Meade County Water District*

Table of Contents

1. Project Planning	1
Introduction	1
Existing Facilities	1
2. Design & Alternatives Considered	3
Alternative 1	3
Alternative 2	4
3. Selection of Alternative	4
4. Proposed Project	5
Project Design.....	5
Budget.....	6
Permit Requirements	6
Sustainability Considerations	7
Appendix A	8
Water Main Extensions Location Map	8
Appendix B	9
Bid Tabulation	9
Appendix C.....	10
Permits and Approvals.....	10

1. Project Planning

Introduction

Meade County Water District (MCWD) provides potable water to a majority of Meade County not including the City of Brandenburg (COB) and City of Muldraugh along the eastern part of Meade County. MCWD distributes water only and does not produce and treat water for consumption as potable water. MCWD purchases all of its water from Hardin County Water District No. 1 (HCWD1) from the south eastern section of the distribution system.

In order to improve water quality for its customers, reduce disinfection byproducts (DBPs) in the drinking water, increase system resiliency throughout the distribution system and provide water to meet existing and future system demands, MCWD is planning to implement a series of improvements to provide system redundancy, improve system hydraulics, and increase customer base for the entire MCWD distribution system.

This Preliminary Engineering Report (PER) will detail the goals of the project by reviewing and evaluating the existing interconnects and grid ties within MCWD's distribution system and extending service to additional customers. This report will also provide a current look at the project budgetary numbers.

Existing Facilities

MCWD currently serves over 4,900 residential and commercial customers in Meade County, Kentucky. MCWD also has two wholesale customers, the City of Louisville (Otter Creek Park) and Doe Valley Inc. The service area includes areas west of the Fort Knox Military Reservation and outside the limits of the City of Brandenburg. Communities currently served by MCWD include Flaherty, Ekron, Payneville-Battletown, Wolf Creek, and Concordia.

Due to the inability of the City of Brandenburg to convert their treatment process to

Final Engineering Report 2019 Water System Improvements Meade County Water District

chloramines, MCWD now purchases all of its potable water wholesale from the Hardin County Water District (HCWD) No. 1.

HCWD No. 1 provides potable water to MCWD through various interconnects. The primary interconnect is at KY 313 and KY 1882. This interconnect along with KY 313 BPS feeds the 952 Pressure Zone (PZ) and three elevated tanks. Another interconnect is provided from HCWD No. 1 at New Salem Church Rd, which feeds the Sand Hill area by gravity. Pressure is provided from HCWD No.1 Brizendine Tank/1085 PZ.

Back-up interconnects from HCWD No. 1 are provided at KY 144 BPS and KY 1600 (gravity) interconnects.

When MCWD converted to chloramines the interconnect and supply of water from the City of Brandenburg was taken out of service.

The major components of MCWD's distribution system are three water storage tanks, three booster pump stations, and water lines. The tanks and booster pump stations in the system include:

- Garrett Elevated Tank (OE 952) - 300,000 gallons
- Payneville Elevated Tank (OE 952) - 300,000 gallons
- Flaherty Elevated Tank (OE 952) - 500,000 gallons
- KY 144 BPS – two (2) constant speed pumps, rated at 350 GPM; the KY 144 Pump Station serves as an emergency/back-up station and is only utilized when HCWD No. 1 closes the KY 1600/KY 920 Interconnect.
- KY 313/1882 Interconnect and BPS– two (2) 60 HP variable speed pumps rated at 1,000 GPM; this facility is an above ground duplex pumping station, which serves as the primary pump station and interconnect that provides water supply to the entire MCWD system.

*Final Engineering Report
2019 Water System Improvements
Meade County Water District*

The existing distribution system consists of approximately:

- 4 miles of 2-inch PVC
- 5 miles of 3-inch PVC
- 48 miles of 4-inch PVC
- 75 miles of 6-inch PVC/DI
- 59 miles of 8-inch PVC/DI
- 10 miles of 10-inch PVC/DI
- 4.8 miles of 12-inch PVC
- 208 miles total

This entire distribution system, except for the Sandy Hill area, is served by a single pressure zone (952). Average daily demand is approximately 845, 000 gallons per day. During peak periods, the system's maximum daily demand is 1,000,000 GPD.

Even though recent expansions were completed in 2018 there remains numerous dead end mains which cause concerns if there is a water main break out in the system. Water quality also becomes a concern at dead end mains due to the potential of low usage in the area causing the water to not be able to turn over. By constructing grid ties it gives the water a continuous flow path to turn over more frequently. There are also households within the MCWD service area that are currently not served by the district.

2. Design & Alternatives Considered

Alternative 1

To alleviate dead end mains, increase flow and pressure, improve water quality and provide redundancy in the distribution system, MCWD plans to design and construct 11 grid ties.

MCWD also plans to design and construct 18 water main extensions throughout the distribution system, along state and county roadways, to add potentially 150 new customers. The total of the grid ties and water main extensions includes approximately 4,600 LF of 8-inch water main,

*Final Engineering Report
2019 Water System Improvements
Meade County Water District*

54,400 LF of 6-inch water main, and 26,700 LF of 4-inch water main.

Design was also advanced for three (3) additive alternates for water main extensions and one grid tie. The total of the additive alternates is 8,120 LF of 6-inch water mains and 1,550 LF of 4-inch water mains.

To help determine where the grid ties should be constructed the MCWD and HCWD No. 1 pipe networks and facilities (tanks, pump stations) were combined to perform a hydraulic analysis to determine flow rates and pressures at existing and new grid tie locations. Various scenarios were modeled for average day and peak hour demand conditions.

The line extensions were determined by looking at where the underserved areas are located and where future growth is anticipated to take place.

See Appendix A for location of water main extensions and grid ties.

Alternative 2

A do nothing alternative was considered. Under this alternative no action was taken and the MCWD continues operations as normal with inadequate redundancy and dead end lines.

3. *Selection of Alternative*

Alternative 1 was selected because it increases redundancy and resiliency in MCWD's distribution system as well as extending service to an additional 150 potential customers. If Alternative 2 was selected the dead end mains would remain and the underserved area of the service area would remain without access to water and redundancy would be lacking leaving the MCWD vulnerable to main breaks that could leave customers without water for an undetermined amount of time while the break is repaired. Alternative 2 was not a viable option for the MCWD.

*Final Engineering Report
2019 Water System Improvements
Meade County Water District*

4. Proposed Project

Project Design

The design for the base routes and additive alternates includes approximately 4,600 LF of 8-inch, 62,250 LF of 6-inch and 28,250 LF of 4-inch water mains extended along eighteen (18) roadways and providing twelve (12) grid ties.

See Appendix A for location of water main extensions and grid ties.

The project was advertised on January 19th, 2021, with a pre-bid meeting being held on January 28th, 2021. On February 4th, 2021 bids were received at the Meade County Water District's office.


Bid Results

MCWD received seven (7) bids from contractors wanting to perform the work. All of the bidders are routinely involved in this type of utility work and all were considered qualified to execute the project. The bidders and bid amounts (base bid and three additive alternates) are shown below with additional details provided in Appendix B.

Contractor	Base Bid Amount	Alternative A1 Bid Amount	Alternative A2 Bid Amount	Alternative A3 Bid Amount
Dirt Works Unlimited, LLC	\$2,088,820.00	\$182,600.00	\$46,440.00	\$77,380.00
Twin States Utilities & Excavation, Inc.	\$2,163,995.00	\$158,095.00	\$32,290.00	\$33,950.00
Cumberland Pipeline, LLC	\$2,246,581.00	\$154,792.00	\$40,352.00	\$45,260.60
Philips Brothers Construction, LLC	\$2,450,000.00	\$189,866.00	\$39,965.00	\$69,925.00
Cleary Construction, LLC	\$2,735,642.00	\$207,992.00	\$46,395.00	\$51,998.00
Utility & Water Services	\$2,539,476.00	\$195,500.00	\$44,700.00	\$40,100.00
Seven Seas Construction	\$2,536,215.75	\$219,125.75*	\$54,491.00*	\$71,238.60*

*Corrected sum

I hereby certify that this is a true and correct tabulation of the bids.



2/8/2021

Kevin J. Brian, PE/Sr. Project Manager
HDR Engineering, Inc.

*Final Engineering Report
2019 Water System Improvements
Meade County Water District*

Budget

To stay within the project budget MCWD will proceed with only the base bid routes and not do any of the additive alternates.

The table below shows the current budget for the proposed project. The project will be financed with USDA – Rural Development Loan.

BUDGET INFORMATION		
	<i>Cost Category</i>	<i>Cost</i>
1	Administrative Expenses	<i>\$10,000</i>
2	Legal Expenses	<i>\$20,000</i>
3	Land, Appraisals, Easements	<i>\$5,000</i>
4	Planning	<i>\$35,000</i>
5	Engineering Fees - Design	<i>\$120,906</i>
6	Engineering Fees - Construction	<i>\$30,226</i>
7	Engineering Fees - Inspection	<i>\$91,013</i>
8	Engineering Fees – Other	<i>\$5,000</i>
9	Construction	<i>\$2,088,820</i>
10	Miscellaneous	<i>\$30,000</i>
11	Contingencies	<i>\$70,205.00</i>
12	TOTAL PROJECT COSTS	<i>\$2,506,170</i>

Permit Requirements

A Kentucky Division of Water – Approval to Construct and KYTC encroachment permit was required for this project. Copies of the permits and approvals are provided in Appendix C.

*Final Engineering Report
2019 Water System Improvements
Meade County Water District*

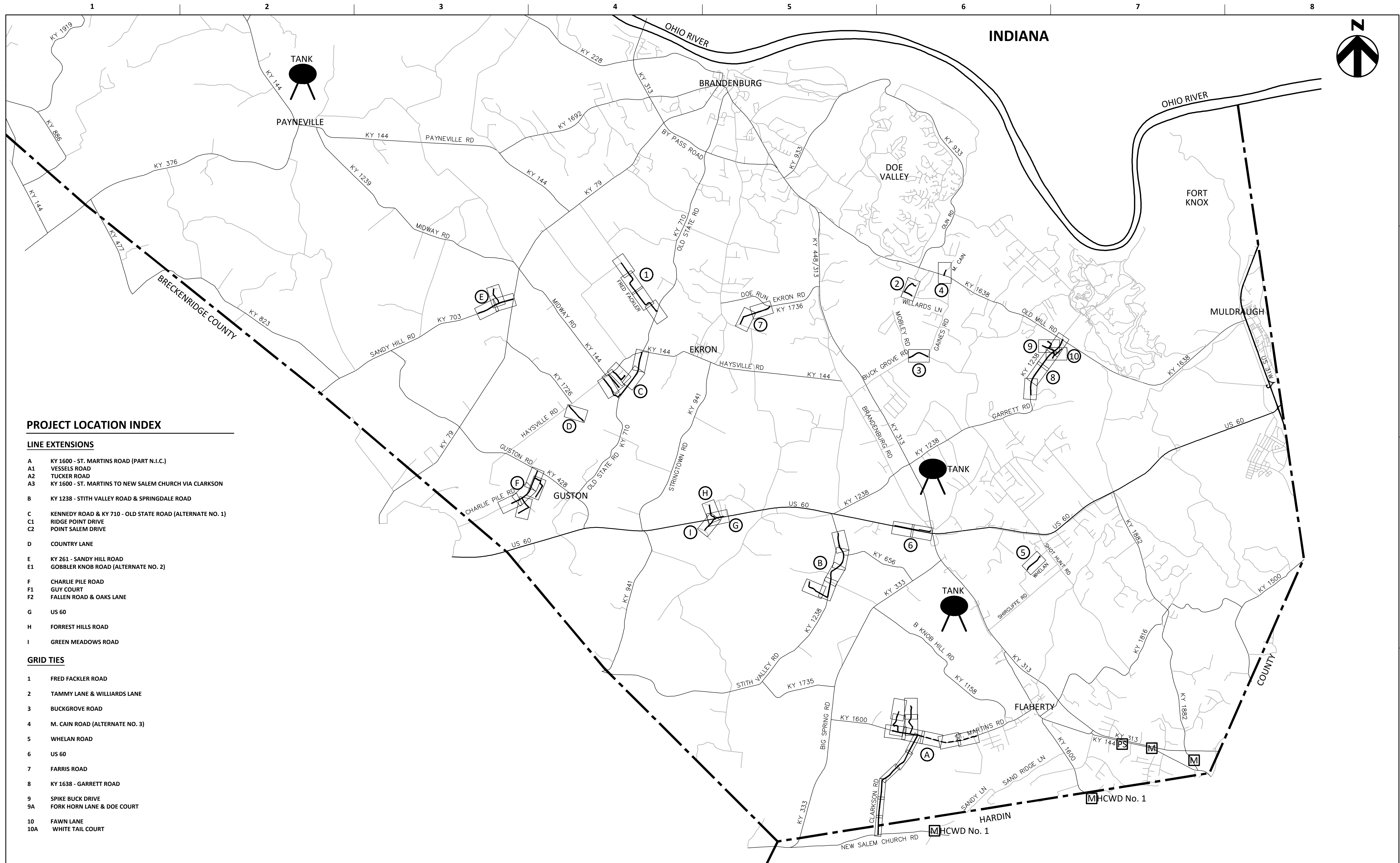
Sustainability Considerations

This project is designed to accommodate growth for the next 20 years. The pipeline assets will have a 50 plus year lifespan.

Appendix A

Water Main Extensions Location Map





PROJECT LOCATION INDEX

LINE EXTENSIONS

- A KY 1600 - ST. MARTINS ROAD (PART N.I.C.)
- A1 VESSELS ROAD
- A2 TUCKER ROAD
- A3 KY 1600 - ST. MARTINS TO NEW SALEM CHURCH VIA CLARKSON
- B KY 1238 - STITH VALLEY ROAD & SPRINGDALE ROAD
- C KENNEDY ROAD & KY 710 - OLD STATE ROAD (ALTERNATE NO. 1)
- C1 RIDGE POINT DRIVE
- C2 POINT SALEM DRIVE
- D COUNTRY LANE
- E KY 261 - SANDY HILL ROAD
- E1 GOBBLER KNOB ROAD (ALTERNATE NO. 2)
- F CHARLIE PILE ROAD
- F1 GUY COURT
- F2 FALLEN ROAD & OAKS LANE
- G US 60
- H FORREST HILLS ROAD
- I GREEN MEADOWS ROAD

GRID TIES

- 1 FRED FACKLER ROAD
- 2 TAMMY LANE & WILLIARDS LANE
- 3 BUCKGROVE ROAD
- 4 M. CAIN ROAD (ALTERNATE NO. 3)
- 5 WHELAN ROAD
- 6 US 60
- 7 FARRIS ROAD
- 8 KY 1638 - GARRETT ROAD
- 9 SPIKE BUCK DRIVE
- 9A FORK HORN LANE & DOE COURT
- 10 FAWN LANE
- 10A WHITE TAIL COURT



ISSUE	DATE	DESCRIPTION

PROJECT MANAGER	KEVIN J. BRIAN
DESIGNED BY	KEVIN J. BRIAN
DRAWN BY	WILLIAM M. GUMM
QA / QC	MIKE HANSEN
PROJECT NUMBER	10175028



**MEADE COUNTY WATER DISTRICT
2019 WATER SYSTEM IMPROVEMENTS
MEADE COUNTY, KENTUCKY**

0 4000' 8000' FILENAME G-03.dwg
SCALE 1" = 4000'

**GENERAL
PLAN INDEX SHEET**

Appendix B

Bid Tabulation

Bid Tabulation
 2019 Water System Improvements
 Bids Received: February 4, 2021

Contractor	Base Bid Amount	Alternative A1 Bid Amount	Alternative A2 Bid Amount	Alternative A3 Bid Amount
Dirt Works Unlimited, LLC	\$2,088,820.00	\$182,600.00	\$46,440.00	\$77,380.00
Twin States Utilities & Excavation, Inc.	\$2,163,995.00	\$158,095.00	\$32,290.00	\$33,950.00
Cumberland Pipeline, LLC	\$2,246,581.00	\$154,792.00	\$40,352.00	\$45,260.60
Philips Brothers Construction, LLC	\$2,450,000.00	\$189,866.00	\$39,965.00	\$69,925.00
Cleary Construction, LLC	\$2,735,642.00	\$207,992.00	\$46,395.00	\$51,998.00
Utility & Water Services	\$2,539,476.00	\$195,500.00	\$44,700.00	\$40,100.00
Seven Seas Construction	\$2,536,215.75	\$219,125.75*	\$54,491.00*	\$71,238.60*

**Corrected sum*

I hereby certify that this is a true and correct tabulation of the bids.



2/8/2021

Kevin J. Brian, PE/Sr. Project Manager
 HDR Engineering, Inc.

Item No.	DESCRIPTION	Unit	Approx.	Dirt Works Unlimited, LLC		Twin States Utilities & Excavation, Inc.		Cumberland Pipeline, LLC		Phillips Brothers Construction, LLC	
			Quantity	Bid Unit Price	Bid Amount	Bid Unit Price	Bid Amount	Bid Unit Price	Bid Amount	Bid Unit Price	Bid Amount
1	Mobilization	LS	1	\$50,000.00	\$50,000.00	\$25,000.00	\$25,000.00	\$10,000.00	\$10,000.00	\$12,000.00	\$12,000.00
2	Bonds and Insurance	LS	1	\$25,000.00	\$25,000.00	\$42,000.00	\$42,000.00	\$22,200.00	\$22,200.00	\$26,585.00	\$26,585.00
3	General Requirements	LS	1	\$245,000.00	\$245,000.00	\$25,000.00	\$25,000.00	\$30,000.00	\$30,000.00	\$124,500.00	\$124,500.00
4	4" PVC Waterline (SDR 17)	LF	26700	\$11.00	\$293,700.00	\$14.00	\$373,800.00	\$17.00	\$453,900.00	\$16.48	\$440,016.00
5	6" PVC Waterline (SDR 17)	LF	54,400	\$13.50	\$734,400.00	\$19.00	\$1,033,600.00	\$18.33	\$997,152.00	\$18.77	\$1,021,088.00
6	8" PVC Waterline (SDR 17)	LF	4,600	\$16.70	\$76,820.00	\$23.75	\$109,250.00	\$23.00	\$105,800.00	\$21.00	\$96,600.00
7	4" Gate Valve	EA	11	\$900.00	\$9,900.00	\$1,040.00	\$11,440.00	\$1,398.00	\$15,378.00	\$975.00	\$10,725.00
8	6" Gate Valve	EA	14	\$1,100.00	\$15,400.00	\$1,230.00	\$17,220.00	\$1,585.00	\$22,190.00	\$1,120.00	\$15,680.00
9	Air Release Valve Assembly	EA	55	\$2,300.00	\$126,500.00	\$2,360.00	\$129,800.00	\$1,790.00	\$98,450.00	\$2,683.00	\$147,565.00
10	12" Steel Encasement (Bored)	LF	700	\$355.00	\$248,500.00	\$150.00	\$105,000.00	\$250.00	\$175,000.00	\$343.00	\$240,100.00
11	12" Steel Encasement (Open Cut)	LF	80	\$60.00	\$4,800.00	\$130.00	\$10,400.00	\$110.00	\$8,800.00	\$91.50	\$7,320.00
12	Concrete Encasement	LF	100	\$35.00	\$3,500.00	\$45.00	\$4,500.00	\$112.00	\$11,200.00	\$35.00	\$3,500.00
13	Flushing Hydrant Assembly	EA	20	\$2,640.00	\$52,800.00	\$2,890.00	\$57,800.00	\$4,000.00	\$80,000.00	\$2,695.00	\$53,900.00
14	8" x 6" Tapping Valve & Sleeve	EA	5	\$3,500.00	\$17,500.00	\$2,740.00	\$13,700.00	\$3,513.00	\$17,565.00	\$2,685.00	\$13,425.00
15	8" x 8" Tapping Valve & Sleeve	EA	1	\$4,200.00	\$4,200.00	\$3,380.00	\$3,380.00	\$3,909.00	\$3,909.00	\$3,075.00	\$3,075.00
16	6" x 6" Tapping Valve & Sleeve	EA	7	\$3,200.00	\$22,400.00	\$2,660.00	\$18,620.00	\$3,150.00	\$22,050.00	\$2,475.00	\$17,325.00
17	6" x 4" Tapping Valve & Sleeve	EA	3	\$2,600.00	\$7,800.00	\$2,400.00	\$7,200.00	\$3,110.00	\$9,330.00	\$2,200.00	\$6,600.00
18	Insertion Valve	EA	1	\$9,500.00	\$9,500.00	\$10,200.00	\$10,200.00	\$8,371.00	\$8,371.00	\$9,600.00	\$9,600.00
19	Connection to Existing WM	EA	6	\$600.00	\$3,600.00	\$1,180.00	\$7,080.00	\$3,410.00	\$20,460.00	\$816.00	\$4,896.00
20	Freebore Driveway	EA	21	\$2,500.00	\$52,500.00	\$1,875.00	\$39,375.00	\$700.00	\$14,700.00	\$1,500.00	\$31,500.00
21	Transfer Service	EA	25	\$500.00	\$12,500.00	\$540.00	\$13,500.00	\$660.00	\$16,500.00	\$1,320.00	\$33,000.00
22	3/4" Service Line (Short)	EA	15	\$500.00	\$7,500.00	\$650.00	\$9,750.00	\$795.00	\$11,925.00	\$1,030.00	\$15,450.00
23	3/4" Service Line (Long)	EA	10	\$750.00	\$7,500.00	\$1,180.00	\$11,800.00	\$1,100.00	\$11,000.00	\$2,000.00	\$20,000.00
24	Meter Vault Relocation	EA	6	\$1,000.00	\$6,000.00	\$980.00	\$5,880.00	\$2,950.00	\$17,700.00	\$1,450.00	\$8,700.00
25	Private Service Line Tie-In	LF	200	\$10.00	\$2,000.00	\$10.00	\$2,000.00	\$10.00	\$2,000.00	\$15.50	\$3,100.00
26	Asphalt Pavement Restoration	SF	3700	\$6.00	\$22,200.00	\$5.00	\$18,500.00	\$10.00	\$37,000.00	\$6.50	\$24,050.00
27	Concrete Pavement Restoration	SF	400	\$12.00	\$4,800.00	\$8.00	\$3,200.00	\$10.00	\$4,000.00	\$14.25	\$5,700.00
28	Erosion Prevention & Sediment Control	LS	1	\$5,000.00	\$5,000.00	\$20,000.00	\$20,000.00	\$10,000.00	\$10,000.00	\$30,000.00	\$30,000.00
29	Traffic Control	LS	1	\$7,500.00	\$7,500.00	\$25,000.00	\$25,000.00	\$10,000.00	\$10,000.00	\$23,000.00	\$23,000.00
30	Demobilization	LS	1	\$10,000.00	\$10,000.00	\$10,000.00	\$10,000.00	\$1.00	\$1.00	\$1,000.00	\$1,000.00
Total Bid Amount				\$2,088,820.00		\$2,163,995.00		\$2,246,581.00		\$2,450,000.00	

ALTERNATIVE BID A1

Item No.	DESCRIPTION	Unit	Approx.	Dirt Works Unlimited, LLC		Twin States Utilities & Excavation, Inc.		Cumberland Pipeline, LLC		Phillips Brothers Construction, LLC	
			Quantity	Bid Unit Price	Bid Amount	Bid Unit Price	Bid Amount	Bid Unit Price	Bid Amount	Bid Unit Price	Bid Amount
1	Mobilization	LS	1	\$12,500.00	\$12,500.00	\$1,000.00	\$1,000.00	\$2,000.00	\$2,000.00	\$800.00	\$800.00
2	Bonds and Insurance	LS	1	\$3,000.00	\$3,000.00	\$2,000.00	\$2,000.00	\$1,500.00	\$1,500.00	\$2,200.00	\$2,200.00
3	General Requirements	LS	1	\$42,000.00	\$42,000.00	\$1,000.00	\$1,000.00	\$3,035.00	\$3,035.00	\$15,000.00	\$15,000.00
4	6" PVC Waterline (SDR 17)	LF	7,500	\$14.00	\$105,000.00	\$19.00	\$142,500.00	\$18.33	\$137,475.00	\$20.78	\$155,850.00
5	Air Release Valve Assembly	EA	2	\$2,300.00	\$4,600.00	\$2,360.00	\$4,720.00	\$1,790.00	\$3,580.00	\$2,683.00	\$5,366.00
6	Freebore Driveway	EA	1	\$2,500.00	\$2,500.00	\$1,875.00	\$1,875.00	\$700.00	\$700.00	\$1,500.00	\$1,500.00
7	Asphalt Pavement Restoration	SF	600	\$5.00	\$3,000.00	\$5.00	\$3,000.00	\$10.00	\$6,000.00	\$6.50	\$3,900.00
8	Erosion Prevention & Sediment Control	LS	1	\$1,000.00	\$1,000.00	\$500.00	\$500.00	\$500.00	\$500.00	\$2,250.00	\$2,250.00
9	Traffic Control	LS	1	\$1,500.00	\$1,500.00	\$500.00	\$500.00	\$1.00	\$1.00	\$2,200.00	\$2,200.00
10	Demobilization	LS	1	\$7,500.00	\$7,500.00	\$1,000.00	\$1,000.00	\$1.00	\$1.00	\$800.00	\$800.00
Total Bid Amount				\$182,600.00		\$158,095.00		\$154,792.00		\$189,866.00	

ALTERNATIVE BID A2

Item No.	DESCRIPTION	Unit	Approx.	Dirt Works Unlimited, LLC		Twin States Utilities & Excavation, Inc.		Cumberland Pipeline, LLC		Phillips Brothers Construction, LLC	
			Quantity	Bid Unit Price	Bid Amount	Bid Unit Price	Bid Amount	Bid Unit Price	Bid Amount	Bid Unit Price	Bid Amount
1	Mobilization	LS	1	\$7,500.00	\$7,500.00	\$1,000.00	\$1,000.00	\$2,000.00	\$2,000.00	\$800.00	\$800.00
2	Bonds and Insurance	LS	1	\$2,000.00	\$2,000.00	\$1,000.00	\$1,000.00	\$500.00	\$500.00	\$500.00	\$500.00
3	General Requirements	LS	1	\$11,000.00	\$11,000.00	\$1,000.00	\$1,000.00	\$791.00	\$791.00	\$3,600.00	\$3,600.00
4	4" Water Line (PVC SDR 17)	LF	1,550	\$11.00	\$17,050.00	\$14.00	\$21,700.00	\$17.00	\$26,350.00	\$17.00	\$26,350.00
5	Flush Hydrant Assembly	EA	1	\$2,640.00	\$2,640.00	\$2,890.00	\$2,890.00	\$4,000.00	\$4,000.00	\$2,695.00	\$2,695.00
6	Service-Long Side	EA	1	\$750.00	\$750.00	\$1,180.00	\$1,180.00	\$1,100.00	\$1,100.00	\$2,000.00	\$2,000.00
7	Meter Vault Relocation	EA	1	\$1,000.00	\$1,000.00	\$980.00	\$980.00	\$2,950.00	\$2,950.00	\$1,450.00	\$1,450.00
8	Transfer Service	EA	1	\$500.00	\$500.00	\$540.00	\$540.00	\$660.00	\$660.00	\$1,320.00	\$1,320.00
9	Erosion Prevention & Sediment Control	LS	1	\$500.00	\$500.00	\$500.00	\$500.00	\$1,000.00	\$1,000.00	\$500.00	\$500.00
10	Traffic Control	LS	1	\$500.00	\$500.00	\$500.00	\$500.00	\$1,000.00	\$1,000.00	\$250.00	\$250.00
11	Demobilization	LS	1	\$3,000.00	\$3,000.00	\$1,000.00	\$1,000.00	\$1.00	\$1.00	\$500.00	\$500.00
Total Bid Amount				\$46,440.00		\$32,290.00		\$40,352.00		\$39,965.00	

ALTERNATIVE A3

Item No.	DESCRIPTION	Unit	Approx.	Dirt Works Unlimited, LLC		Twin States Utilities & Excavation, Inc.		Cumberland Pipeline, LLC		Phillips Brothers Construction, LLC	
			Quantity	Bid Unit Price	Bid Amount	Bid Unit Price	Bid Amount	Bid Unit Price	Bid Amount	Bid Unit Price	Bid Amount
1	Mobilization	LS	1	\$7,500.00	\$7,500.00	\$1,000.00	\$1,000.00	\$2,000.00	\$2,000.00	\$800.00	\$800.00
2	Bonds and Insurance	LS	1	\$2,000.00	\$2,000.00	\$1,000.00	\$1,000.00	\$500.00	\$500.00	\$800.00	\$800.00
3	General Requirements	LS	1	\$18,000.00	\$18,000.00	\$1,000.00	\$1,000.00	\$887.00	\$887.00	\$5,000.00	\$5,000.00
4	6" Water Line (PVC SDR 17)	LF	620	\$14.00	\$8,680.00	\$19.00	\$11,780.00	\$18.33	\$11,364.60	\$26.00	\$16,120.00
5	6" Gate Valve	EA	1	\$1,100.00	\$1,100.00	\$1,230.00	\$1,230.00	\$1,585.00	\$1,585.00	\$1,120.00	\$1,120.00
6	12" Steel Casing (Bored)	LF	80	\$400.00	\$32,000.00	\$150.00	\$12,000.00	\$250.00	\$20,000.00	\$510.00	\$40,800.00
7	Connect to Existing WM	EA	1	\$600.00	\$600.00	\$1,200.00	\$1,200.00	\$3,410.00	\$3,410.00	\$1,000.00	\$1,000.00
8	8" x 6" Tapping Valve & Sleeve	EA	1	\$3,500.00	\$3,500.00	\$2,740.00	\$2,740.00	\$3,513.00	\$3,513.00	\$2,685.00	\$2,685.00
9	Erosion Prevention & Sediment Control	LS	1	\$500.00	\$500.00	\$500.00	\$500.00	\$1,000.00	\$1,000.00	\$500.00	\$500.00
10	Traffic Control	LS	1	\$500.00	\$500.00	\$500.00	\$500.00	\$1,000.00	\$1,000.00	\$500.00	\$500.00
11	Demobilization	LS	1	\$3,000.00	\$3,000.00	\$1,000.00	\$1,000.00	\$1.00	\$1.00	\$600.00	\$600.00
Total Bid Amount				\$77,380.00		\$33,950.00		\$45,260.60		\$69,925.00	

Item No.	DESCRIPTION	Cleary Construction, Inc.		Utility & Water Services		Seven Seas Construction	
		Bid Unit Price	Bid Amount	Bid Unit Price	Bid Amount	Bid Unit Price	Bid Amount
1	Mobilization	\$2,106.00	\$2,106.00	\$75,000.00	\$75,000.00	\$11,471.25	\$11,471.25
2	Bonds and Insurance	\$75,790.00	\$75,790.00	\$40,000.00	\$40,000.00	\$80,402.25	\$80,402.25
3	General Requirements	\$15,790.00	\$15,790.00	\$1,000.00	\$1,000.00	\$183,000.00	\$183,000.00
4	4" PVC Waterline (SDR 17)	\$19.20	\$512,640.00	\$21.75	\$580,725.00	\$19.25	\$513,975.00
5	6" PVC Waterline (SDR 17)	\$23.60	\$1,283,840.00	\$21.75	\$1,183,200.00	\$14.25	\$775,200.00
6	8" PVC Waterline (SDR 17)	\$27.60	\$126,960.00	\$21.75	\$100,050.00	\$17.50	\$80,500.00
7	4" Gate Valve	\$1,053.00	\$11,583.00	\$1,500.00	\$16,500.00	\$1,008.00	\$11,088.00
8	6" Gate Valve	\$1,316.00	\$18,424.00	\$1,000.00	\$14,000.00	\$1,173.00	\$16,422.00
9	Air Release Valve Assembly	\$1,685.00	\$92,675.00	\$2,000.00	\$110,000.00	\$1,708.00	\$93,940.00
10	12" Steel Encasement (Bored)	\$269.00	\$188,300.00	\$125.00	\$87,500.00	\$265.00	\$185,500.00
11	12" Steel Encasement (Open Cut)	\$148.00	\$11,840.00	\$75.00	\$6,000.00	\$111.00	\$8,880.00
12	Concrete Encasement	\$52.70	\$5,270.00	\$50.00	\$5,000.00	\$182.00	\$18,200.00
13	Flushing Hydrant Assembly	\$4,000.00	\$80,000.00	\$4,000.00	\$80,000.00	\$3,941.00	\$78,820.00
14	8" x 6" Tapping Valve & Sleeve	\$3,685.00	\$18,425.00	\$1,900.00	\$9,500.00	\$2,984.00	\$14,920.00
15	8" x 8" Tapping Valve & Sleeve	\$4,211.00	\$4,211.00	\$2,300.00	\$2,300.00	\$3,566.00	\$3,566.00
16	6" x 6" Tapping Valve & Sleeve	\$3,579.00	\$25,053.00	\$1,700.00	\$11,900.00	\$3,114.00	\$21,798.00
17	6" x 4" Tapping Valve & Sleeve	\$3,369.00	\$10,107.00	\$1,400.00	\$4,200.00	\$2,912.00	\$8,736.00
18	Insertion Valve	\$12,632.00	\$12,632.00	\$6,000.00	\$6,000.00	\$12,289.00	\$12,289.00
19	Connection to Existing WM	\$1,895.00	\$11,370.00	\$500.00	\$3,000.00	\$2,031.75	\$12,190.50
20	Freebore Driveway	\$3,158.00	\$66,318.00	\$1,500.00	\$31,500.00	\$1,953.00	\$41,013.00
21	Transfer Service	\$1,579.00	\$39,475.00	\$500.00	\$12,500.00	\$812.00	\$20,300.00
22	3/4" Service Line (Short)	\$843.00	\$12,645.00	\$500.00	\$7,500.00	\$1,564.50	\$23,467.50
23	3/4" Service Line (Long)	\$1,579.00	\$15,790.00	\$500.00	\$5,000.00	\$2,973.75	\$29,737.50
24	Meter Vault Relocation	\$527.00	\$3,162.00	\$100.00	\$600.00	\$2,841.75	\$17,050.50
25	Private Service Line Tie-In	\$10.60	\$2,120.00	\$5.00	\$1,000.00	\$24.50	\$4,900.00
26	Asphalt Pavement Restoration	\$12.70	\$46,990.00	\$5.00	\$18,500.00	\$11.50	\$42,550.00
27	Concrete Pavement Restoration	\$21.10	\$8,440.00	\$5.00	\$2,000.00	\$13.75	\$5,500.00
28	Erosion Prevention & Sediment Control	\$21,053.00	\$21,053.00	\$100,000.00	\$100,000.00	\$26,635.50	\$26,635.50
29	Traffic Control	\$10,527.00	\$10,527.00	\$25,000.00	\$25,000.00	\$192,093.75	\$192,093.75
30	Demobilization	\$2,106.00	\$2,106.00	\$1.00	\$1.00	\$2,070.00	\$2,070.00
Total Bid Amount		\$2,735,642.00		\$2,539,476.00		\$2,536,215.75	

Alternatives

ALTERNATIVE BID A1

Item No.	DESCRIPTION	Unit	Approx.	Cleary Construction, Inc.		Utility & Water Services		Seven Seas Construction	
			Quantity	Bid Unit Price	Bid Amount	Bid Unit Price	Bid Amount	Bid Unit Price	Bid Amount
1	Mobilization	LS	1	\$1,053.00	\$1,053.00	\$1,000.00	\$1,000.00	\$2,846.00	\$2,846.00
2	Bonds and Insurance	LS	1	\$6,316.00	\$6,316.00	\$500.00	\$500.00	\$2,415.00	\$2,415.00
3	General Requirements	LS	1	\$3,158.00	\$3,158.00	\$500.00	\$500.00	\$6,787.50	\$6,787.50
4	6" PVC Waterline (SDR 17)	LF	7,500	\$23.60	\$177,000.00	\$22.00	\$165,000.00	\$17.39	\$130,425.00
5	Air Release Valve Assembly	EA	2	\$1,685.00	\$3,370.00	\$5,000.00	\$10,000.00	\$1,708.00	\$3,416.00
6	Freebore Driveway	EA	1	\$3,158.00	\$3,158.00	\$1,500.00	\$1,500.00	\$22,173.00	\$22,173.00
7	Asphalt Pavement Restoration	SF	600	\$12.70	\$7,620.00	\$10.00	\$6,000.00	\$11.50	\$6,900.00
8	Erosion Prevention & Sediment Control	LS	1	\$3,158.00	\$3,158.00	\$10,000.00	\$10,000.00	\$18,492.50	\$18,492.50
9	Traffic Control	LS	1	\$2,106.00	\$2,106.00	\$500.00	\$500.00	\$24,520.75	\$24,520.75
10	Demobilization	LS	1	\$1,053.00	\$1,053.00	\$500.00	\$500.00	\$1,150.00	\$1,150.00
Total Bid Amount				\$207,992.00		\$195,500.00		\$219,125.75*	

*Corrected sum

ALTERNATIVE BID A2

Item No.	DESCRIPTION	Unit	Approx.	Cleary Construction, Inc.		Utility & Water Services		Seven Seas Construction	
			Quantity	Bid Unit Price	Bid Amount	Bid Unit Price	Bid Amount	Bid Unit Price	Bid Amount
1	Mobilization	LS	1	\$1,053.00	\$1,053.00	\$500.00	\$500.00	\$1,121.25	\$1,121.25
2	Bonds and Insurance	LS	1	\$4,211.00	\$4,211.00	\$500.00	\$500.00	\$575.00	\$575.00
3	General Requirements	LS	1	\$1,053.00	\$1,053.00	\$500.00	\$500.00	\$2,119.25	\$2,119.25
4	4" Water Line (PVC SDR 17)	LF	1,550	\$19.20	\$29,760.00	\$22.00	\$34,100.00	\$14.17	\$21,963.50
5	Flush Hydrant Assembly	EA	1	\$4,000.00	\$4,000.00	\$4,000.00	\$4,000.00	\$3,941.00	\$3,941.00
6	Service-Long Side	EA	1	\$1,579.00	\$1,579.00	\$1,500.00	\$1,500.00	\$2,841.75	\$2,841.75
7	Meter Vault Relocation	EA	1	\$527.00	\$527.00	\$500.00	\$500.00	\$2,841.75	\$2,841.75
8	Transfer Service	EA	1	\$1,579.00	\$1,579.00	\$100.00	\$100.00	\$812.00	\$812.00
9	Erosion Prevention & Sediment Control	LS	1	\$1,053.00	\$1,053.00	\$2,000.00	\$2,000.00	\$5,727.50	\$5,727.50
10	Traffic Control	LS	1	\$527.00	\$527.00	\$500.00	\$500.00	\$11,973.00	\$11,973.00
11	Demobilization	LS	1	\$1,053.00	\$1,053.00	\$500.00	\$500.00	\$575.00	\$575.00
Total Bid Amount				\$46,395.00		\$44,700.00		\$54,491.00*	

*Corrected Sum

ALTERNATIVE BID A3

Item No.	DESCRIPTION	Unit	Approx.	Cleary Construction, Inc.		Utility & Water Services		Seven Seas Construction	
			Quantity	Bid Unit Price	Bid Amount	Bid Unit Price	Bid Amount	Bid Unit Price	Bid Amount
1	Mobilization	LS	1	\$1,053.00	\$1,053.00	\$500.00	\$500.00	\$1,125.25	\$1,125.25
2	Bonds and Insurance	LS	1	\$4,211.00	\$4,211.00	\$500.00	\$500.00	\$747.50	\$747.50
3	General Requirements	LS	1	\$1,053.00	\$1,053.00	\$500.00	\$500.00	\$1,044.75	\$1,044.75
4	6" Water Line (PVC SDR 17)	LF	620	\$23.60	\$14,632.00	\$30.00	\$18,600.00	\$21.46	\$13,305.20
5	6" Gate Valve	EA	1	\$1,316.00	\$1,316.00	\$1,500.00	\$1,500.00	\$1,173.00	\$1,173.00
6	12" Steel Casing (Bored)	LF	80	\$269.00	\$21,520.00	\$150.00	\$12,000.00	\$480.58	\$38,446.40
7	Connect to Existing WM	EA	1	\$1,895.00	\$1,895.00	\$1,500.00	\$1,500.00	\$2,031.75	\$2,031.75
8	8" x 6" Tapping Valve & Sleeve	EA	1	\$3,685.00	\$3,685.00	\$2,500.00	\$2,500.00	\$2,948.00	\$2,948.00
9	Erosion Prevention & Sediment Control	LS	1	\$1,053.00	\$1,053.00	\$1,500.00	\$1,500.00	\$3,855.25	\$3,855.25
10	Traffic Control	LS	1	\$527.00	\$527.00	\$500.00	\$500.00	\$5,986.50	\$5,986.50
11	Demobilization	LS	1	\$1,053.00	\$1,053.00	\$500.00	\$500.00	\$575.00	\$575.00
Total Bid Amount				\$51,998.00		\$40,100.00		\$71,238.60*	

*Corrected sum

Appendix C

Permits and Approvals



Andy Beshear
Governor

COMMONWEALTH OF KENTUCKY
TRANSPORTATION CABINET
Department of Highways, District 4 Office
634 East Dixie Highway
Elizabethtown, Kentucky 42701
(270) 766-5066
www.transportation.ky.gov/

Jim Gray
Secretary

April 27, 2020

Meade County Water Dist.
Tim Gossett
1003 Armory Place
Brandenburg, Kentucky 40108

Subject: Permit #: 04-2020-00209
Permit Type: Utilities - Water
Approval

Dear Applicant:

Attached is your permit approval and documentation for the subject permit.

Be advised that all work must be done in conformity with permit and application conditions. If you have any questions, please contact the Permits Section at this office.

Sincerely,

A handwritten signature in cursive script that reads "Jacob Riggs".

Jacob Riggs
D4 Permits - Supervisor

Attachments



An Equal Opportunity Employer M/F/D



ENCROACHMENT PERMIT

KYTC KEPT #: 04-2020-00209

Permittee: Meade County Water Dist.

Permit Type / Subtype: Utilities / Water

Work Completion Date: 10/27/2020

INDEMNITIES		
Type	Amount Required	Tracking Number
Performance Bond	\$0.00	
Cash / Check	\$0.00	
Self-Insured	\$0.00	
Payment Bond	\$0.00	
Liability Insurance	\$0.00	

This permit has been: **APPROVED** **DENIED**

Jacob Riggs	D4 Permits - Supervisor	4/27/2020
SIGNATURE	TITLE	DATE

The TC 99-1(B), including the application TC-99 1(A) and all related and accompanying documents and drawings make up the permit. It is not a permit unless both the TC 99-1(A) and TC 99-1(B) are both present.

LOCATION(S)			
Description	County - Route	Latitude	Longitude
	Meade - KY 1638	37.950786	-86.096942
	Meade - KY 710	37.917137	-86.205489
	Meade - KY 144	37.924174	-86.208431
	Meade - US 60	37.883240	-86.106408
	Meade - KY 1600	37.828678	-86.085448
	Meade - KY 1638	37.950786	-86.096942
	Meade - US 60	37.885777	-86.174833
	Meade - KY 1238	37.865259	-86.135112



To Submit a Locate Request
 24 Hours a Day, Seven Days a Week:
 Call 811 or 800-752-6007

LOCATION(S)			
Description	County - Route	Latitude	Longitude
	Meade - KY 1238	37.918506	-86.067624



To Submit a Locate Request
24 Hours a Day, Seven Days a Week:
Call 811 or 800-752-6007



APPLICATION FOR ENCROACHMENT PERMIT

Permittee Information				KYTC No. 04-2020-00209	
Name	Meade County Water District			Permit Information	
Address	1003 Armory Place			Address	
				City	
City	Brandenburg			State	Zip
State	KY	Zip	40108	County	Meade
Phone#	270-422-5006			Route No.	KY 144 Mile-Point 21,21.1,21.7
Contact	Tim Gossett/MCWD			Longitude (X)	-86.2078
Phone	270-422-5006	Cell	270-668-2676	Latitude (Y)	37.9245
Email	mcwattg@bbtel.com			Information below to be filled out by KYTC	
Contact	Kari Nunley/HDR			<input type="checkbox"/> Air Right	<input type="checkbox"/> Entrance
Phone	502-909-3264	Cell		<input checked="" type="checkbox"/> Utilities	<input type="checkbox"/> Other: _____
Email	kari.nunley@hdrinc.com			<input type="checkbox"/> Left	<input type="checkbox"/> Right <input checked="" type="checkbox"/> X-ing
				Access:	<input type="checkbox"/> Full <input type="checkbox"/> Partial <input checked="" type="checkbox"/> by Permit

General Description of Work:

A total of three road crossings occur on KY 144, at mile marker 21, 21.1 and 21.7. Road crossings will be installed by bore and jack. One road crossing is located on KY 144 near Ridge Point Drive with a length of approximately 40 LF. The second road crossing is located on KY 144 near Point Salem Drive with a length of approximately 40 LF. The third crossing is at the intersection of KY 144 and KY 710, at mile marker 21.7 and will have a length of approximately 40 LF. All casing pipe will be 12" steel. All carrier pipe will be 6" PVC (SDR17). Installation will be at a minimum depth of 42". All disturbed areas shall be seeded and restored to KYTC Standard Specifications. See Sheets C-21-C23.

THE UNDERSIGNED PERMITTEE(S) (being duly authorized representative(s) or owner(s)) DO AGREE TO ALL TERMS AND CONDITIONS ON THE TC 99-1 (A).

Tim Gossett
 Signature

March 10, 2020
 Date

This is not a permit unless and until the permittee(s) receives an approved TC 99-1(B) from KYTC. This application shall become void if not approved by the cancellation date. The cancellation date shall be one year from the date the permittee submits their application.



Kentucky Transportation Cabinet
 Department of Highways
 Permits Branch

TC 99-1 (A)
 1/2015
 Page 1 of 4

APPLICATION FOR ENCROACHMENT PERMIT

Permittee Information		KYTC No.	04-2020-00209	
Name	Meade County Water District		Permit Information	
Address	1003 Armory Place		Address	
			City	
City	Brandenburg		State	Zip
State	KY	Zip	40108	
County	Meade		Route No.	KY 710
Phone#	270-422-5006		Mile-Point	3.9 & 2.1-3.2
Contact	Tim Gossett		Longitude (X)	-86.19262 & -86.19990
Phone	270-422-5006	Cell	270-668-2676	
Email	mcwattg@bbtel.com		Information below to be filled out by KYTC	
Contact	Kari Nunley		<input type="checkbox"/> Air Right	<input type="checkbox"/> Entrance
Phone	502-909-3264	Cell	502-909-3264	
Email	kari.nunley@hdrinc.com		<input checked="" type="checkbox"/> Utilities	<input type="checkbox"/> Other: _____
			<input type="checkbox"/> Left	<input type="checkbox"/> Right
			<input checked="" type="checkbox"/> X-ing	
Access:			<input type="checkbox"/> Full	<input type="checkbox"/> Partial
			<input checked="" type="checkbox"/> by Permit	

General Description of Work:

Installation of a 6" PVC (SDR 17) Waterline with related appurtenances within the ROW of KY 710 at two separate locations, the intersection of KY 710 and Fred Fackler Road, and down KY 710 from mile marker 2.1 to 3.2. Installation will be open trench except at road crossings. A total of 1 road crossings occur along this mile-point. The road crossing will be on KY 710 at Fred Fackler Road with a length of approximately 40 LF and installed by bore and jack method. All casing pipe will be 12" steel. Installation will be at a minimum depth of 42". All disturbed areas shall be seeded and restored to KYTC Standard Specifications. See Sheets C-19-C-21.

THE UNDERSIGNED PERMITTEE(S) (being duly authorized representative(s) or owner(s)) DO AGREE TO ALL TERMS AND CONDITIONS ON THE TC 99-1 (A).

Tim Gossett

MARCH 10, 2020

Signature

Date

This is not a permit unless and until the permittee(s) receives an approved TC 99-1(B) from KYTC. This application shall become void if not approved by the cancellation date. The cancellation date shall be one year from the date the permittee submits their application.



Kentucky Transportation Cabinet
 Department of Highways
 Permits Branch

TC 99-1 (A)
 1/2015
 Page 1 of 4

APPLICATION FOR ENCROACHMENT PERMIT

Permittee Information				KYTC No.	04-2020-00209	
Name	Meade County Water District			Permit Information		
Address	1003 Armory Place			Address		
				City		
City	Brandenburg			State	Zip	
State	KY	Zip	40108	County	Meade	
Phone#	270-422-5006			Route No.	KY 1238	Mile-Point 5.0-6.3 & 11.1-12.3
Contact	Tim Gossett			Longitude (X)	-86.13158 & -86.06369	
Phone	270-422-5006	Cell	270-668-2676	Latitude (Y)	37.87331 & 37.92722	
Email	mcwattg@bbtel.com			Information below to be filled out by KYTC		
Contact	Kari Nunley			<input type="checkbox"/> Air Right	<input type="checkbox"/> Entrance	
Phone	502-909-3264	Cell		<input checked="" type="checkbox"/> Utilities	<input type="checkbox"/> Other: _____	
Email	kari.nunley@hdrinc.com					
				<input type="checkbox"/> Left	<input type="checkbox"/> Right	<input checked="" type="checkbox"/> X-ing
				Access: <input type="checkbox"/> Full	<input type="checkbox"/> Partial	<input checked="" type="checkbox"/> by Permit

General Description of Work:

Installation of an 6" PVC (SDR 17) Waterline with related appurtences within the ROW of KY 1238 at two separate locations, from mile marker 5.0-6.3 and 11.1-12.3. Installation will be open trench except at road crossings. Road crossings will be installed by bore and jack method. A total of 2 road crossings occur along this mile-point. The first road crossing will be on KY 1238 near mile point 5.8 with a length of approximately 40 LF and be installed by bore and jack method. The last crossing will be at KY 1238 and Spike Buck Road with a length of approximately 100 LF and installed by bore and jack method. All casing pipe will be 12" steel. Installation will be at a minimum depth of 42". All disturbed areas shall be seeded and restored to KYTC Standard Specifications. C-13, C-48.

THE UNDERSIGNED PERMITTEE(S) (being duly authorized representative(s) or owner(s)) DO AGREE TO ALL TERMS AND CONDITIONS ON THE TC 99-1 (A).

Tim Gossett

MARCH 10, 2020

Signature

Date

This is not a permit unless and until the permittee(s) receives an approved TC 99-1(B) from KYTC. This application shall become void if not approved by the cancellation date. The cancellation date shall be one year from the date the permittee submits their application.



Kentucky Transportation Cabinet
 Department of Highways
 Permits Branch

TC 99-1 (A)
 1/2015
 Page 1 of 4

APPLICATION FOR ENCROACHMENT PERMIT

Permittee Information				KYTC No. 04-2020-00209	
Name	Meade County Water District			Permit Information	
Address	1003 Armory Place			Address	
				City	
City	Brandenburg			State	Zip
State	KY	Zip	40108	County	Meade
Phone#	270-422-5006			Route No.	KY 1600 Mile-Point 2.9-4.4
Contact	Tim Gossett			Longitude (X)	-86.09870
Phone	270-422-5006	Cell	270-668-2676	Latitude (Y)	37.82742
Email	mcwattg@bbtel.com			<i>Information below to be filled out by KYTC</i>	
Contact	Kari Nunley			<input type="checkbox"/> Air Right	<input type="checkbox"/> Entrance
Phone	502-909-3264	Cell		<input checked="" type="checkbox"/> Utilities	<input type="checkbox"/> Other: _____
Email	kari.nunley@gmail.com			<input type="checkbox"/> Left	<input type="checkbox"/> Right <input checked="" type="checkbox"/> X-ing
				Access: <input type="checkbox"/> Full	<input type="checkbox"/> Partial <input checked="" type="checkbox"/> by Permit

General Description of Work:

Installation of an 6" PVC (SDR 17) Waterline with related appurtences within the ROW of KY 1238 from mile marker 2.9 to 4.4. Installation will be open trench except at road crossings. A total of 3 road crossings occur along this mile-point. The first road crossing is at KY 1600 and Lancaster Road with a length of approximately 40 LF and will be installed by bore and jack method. The second road crossing will be at KY 1600 and Clarkson Road with a length of 40 LF and will be installed by bore and jack method. The third road crossing will be at KY 1600 and Vessels Road with a length of approximately 50 LF installed by bore and jack. The last crossing will be at KY 1600 and Tucker Road with a length of approximately 40 LF installed by bore and jack. All casing pipe will be 12" steel pipe. Installation will be at a minimum depth of 42". All disturbed areas shall be seeded and restored to KYTC Standard Specifications. See Sheet C-01-C-05.

THE UNDERSIGNED PERMITTEE(s) (being duly authorized representative(s) or owner(s)) DO AGREE TO ALL TERMS AND CONDITIONS ON THE TC 99-1 (A).

Tim Gossett

MARCH 10, 2020

Signature

Date

This is not a permit unless and until the permittee(s) receives an approved TC 99-1(B) from KYTC. This application shall become void if not approved by the cancellation date. The cancellation date shall be one year from the date the permittee submits their application.



Kentucky Transportation Cabinet
 Department of Highways
 Permits Branch

TC 99-1 (A)
 1/2015
 Page 1 of 4

APPLICATION FOR ENCROACHMENT PERMIT

Permittee Information		KYTC No.	04-2020-00209	
Name	Meade County Water District		Permit Information	
Address	1003 Armory Place		Address	
			City	
City	Brandenburg		State	Zip
State	KY	Zip	40108	
County	Meade		Route No.	KY 1638
Phone#	270-422-5006		Mile-Point	2.6
Contact	Tim Gossett/MCWD		Longitude (X)	-86.09691
Phone	270-422-5006	Cell	270-668-2676	
Latitude (Y)	37.95083		Information below to be filled out by KYTC	
Email	mcwattg@bbtel.com		<input type="checkbox"/> Air Right	<input type="checkbox"/> Entrance
Contact	Kari Nunley/HDR		<input checked="" type="checkbox"/> Utilities	<input type="checkbox"/> Other: _____
Phone	502-909-3264	Cell		
Email	kari.nunley@hdrinc.com		<input type="checkbox"/> Left	<input type="checkbox"/> Right
			<input checked="" type="checkbox"/> X-ing	
Access:	<input type="checkbox"/> Full	<input type="checkbox"/> Partial	<input checked="" type="checkbox"/> by Permit	

General Description of Work:

Installation of a 6" PVC (SDR17) Waterline with related appurtenances within the ROW of KY 1638 at the intersection of M. Cain Road. Road crossings will be installed by bore and jack method. The road crossing occurs on KY 1638 at M. Cain Road with a length of approximately 60 LF. Casing pipe will be 12" cast iron. Installation will be at a minimum depth of 42". All disturbed areas shall be seeded and restored to KYTC Standard Specifications. See Sheet C-42.

THE UNDERSIGNED PERMITTEE(s) (being duly authorized representative(s) or owner(s)) DO AGREE TO ALL TERMS AND CONDITIONS ON THE TC 99-1 (A)

Tim Gossett

March 10, 2020

Signature

Date

This is not a permit unless and until the permittee(s) receives an approved TC 99-1(B) from KYTC. This application shall become void if not approved by the cancellation date. The cancellation date shall be one year from the date the permittee submits their application.



Kentucky Transportation Cabinet
 Department of Highways
 Permits Branch

APPLICATION FOR ENCROACHMENT PERMIT

Permittee Information		KYTC No. 04-2020-00209	
Name	Meade County Water District	Permit Information	
Address	1003 Armory Place	Address	
		City	
City	Brandenburg	State	Zip
State	KY	County	Meade
Zip	40108	Route No.	US 60
Phone#	270-422-5006	Mile-Point	7.6-7.9 & 3.8-4.1
Contact	Tim Gossett/MCWD	Longitude (X)	-86.0939 & -86.17213
Phone	270-422-5006	Latitude (Y)	37.88268 & 37.88617
Cell	270-668-2676	Information below to be filled out by KYTC	
Email	mcwattg@bbtel.com	<input type="checkbox"/> Air Right	<input type="checkbox"/> Entrance
Contact	Kari Nunley/HDR	<input checked="" type="checkbox"/> Utilities	<input type="checkbox"/> Other: _____
Phone	502-909-3264		
Cell			
Email	kari.nunley@hdrinc.com	<input type="checkbox"/> Left	<input type="checkbox"/> Right
			<input checked="" type="checkbox"/> X-ing
		Access:	<input type="checkbox"/> Full
			<input type="checkbox"/> Partial
			<input checked="" type="checkbox"/> by Permit

General Description of Work:

Installation of a 4" PVC (SDR17) Waterline with related appurtences within the ROW of US 60 from mile marker 3.8 to 4.1. Installation will be open trench except at road crossings. Road crossings will be installed by bore and jack method. A road crossing will occur on US 60 near Forrest Hill Road with a length of approximately 60 LF. Casing pipe will be 12" steel. Installation of a 8" PVC (SDR17) Waterline with related appurtences within the ROW of US 60 from mile marker 7.6 to 7.9. A road crossing will occur near mile-point 7.2 with a length of approximately 80 LF. Casing pipe will be 14" steel. Installation will be at a minimum depth of 42". All disturbed areas shall be seeded and restored to KYTC Standard Specifications. See Sheet C-33-C-35.

THE UNDERSIGNED PERMITTEE(s) (being duly authorized representative(s) or owner(s)) DO AGREE TO ALL TERMS AND CONDITIONS ON THE TC 99-1 (A)

MARCH 10, 2020

Signature

Date

This is not a permit unless and until the permittee(s) receives an approved TC 99-1(B) from KYTC. This application shall become void if not approved by the cancellation date. The cancellation date shall be one year from the date the permittee submits their application.



APPLICATION FOR ENCROACHMENT PERMIT

TERMS AND CONDITIONS

1. The permit, including this application and all related and accompanying documents and drawings making up the permit, remains in effect and is binding upon the Applicant/Permittee, its successors and assigns, as long as the encroachment(s) exists and also until the permittee is finally relieved by the Department of Highways from all its obligations.
2. Applicant shall meet all requirements of the Clean Water Act if the project will disturb one acre or more, the applicant shall obtain a KPDES KYR10 Permit from the Kentucky Division of Water. All disturbed areas shall meet the requirements of the Department of Highway's Standard Specifications, Sections 212 and 213, as amended.
3. **INDEMNITY:**
 - A. **PERFORMANCE BOND:** The permittee shall provide to the Department a performance bond according to the Permits Manual, Section PE-203 as a guarantee of conformance with the Department's Encroachment Permit requirements.
 - B. **PAYMENT BOND:** At the discretion of the department, a payment bond shall be required of the permittee to ensure payment of liquidated damages assessed to the permittee.
 - C. **LIABILITY INSURANCE:** Liability insurance shall be required of the permittee (in an amount approved by the department) to cover all liabilities associated with the encroachment.
 - D. It shall be the responsibility of the permittee, its successors and assigns, to maintain all indemnities in full force and effect until the permittee is authorized to release the indemnity by the Department.
4. A copy of this application and all related documents making up the approved permit shall be given to the applicant and shall be made readily available for review at the work site at all times.
5. Perpetual maintenance of the encroachment is the responsibility of the permittee, its successors and assigns, with the approval of the Department as required, unless otherwise stated.
6. Permittee, its successors and assigns, shall comply with and agree to be bound by the requirements and terms of (a) this application and all related documents making up the approved permit, (b) by the Department's Permits Manual, and (c) by the Manual on Uniform Traffic Control Devices, both manuals as revised to and in effect on the date of issuance of the permit, all of which documents are made a part thereof by this reference. Compliance by the permittee, its successors and assigns, with subsequent revisions to applicable provisions of either manual or other policy of the Department may be made a condition of allowing the encroachment to persist under the permit.
7. Permittee agrees that this and any encroachment may be ordered removed by the Department at any time, and for any reason, upon thirty days written notice to the last known address of the applicant or to the address at the location of the encroachment. The permittee agrees that the cost of removing and of restoring the associated right-of-way is the responsibility of the permittee, its successors and assigns.
8. Permittee, its successors and assigns, agree that if the Department determines that motor vehicular safety deficiencies develop as a result of the installation or use of the encroachment, the permittee, its successors and assigns, shall provide and bear the expenses to adjust, relocate, or reconstruct the facilities, add signs, auxiliary lanes, or other corrective measures reasonably deemed necessary by the Department within a reasonable time after receipt of a written notice of such deficiency. The period within which such adjustments, relocations, additions, modifications, or other corrective measures must be completed will be specified in the notice.
9. Where traffic signals are required as a condition of granting the requested permit or are thereafter required to correct motor vehicular safety deficiencies, as determined by the Department, the costs for signal equipment and



APPLICATION FOR ENCROACHMENT PERMIT

installation(s) shall be borne by the permittee, its successors and assigns and the Department in its reasonable discretion and only in accordance with the Department’s current policy set forth in the Traffic Operations Manual and Permits Manual. Any modifications to the permittee’s entrance necessary to accommodate signalization (including necessary easement(s) on private property) shall be the responsibility of the permittee, its successors and assigns, at no expense to the Department.

10. The requested encroachment shall not infringe on the frontage rights of an abutting owner without their written consent as hereinafter described. Each abutting owner shall express their consent, which shall be binding on their successors and assigns, by the submission of a notarized statement as follows, “I _____ (we), _____, hereby consent to the granting of the permit requested by the applicant along Route _____, which permit does affect frontage rights along my (our) adjacent real property.” By signature(s) _____, subscribed and sworn by _____, on this date _____.

11. The permit, if approved, is subject to the agreement that it shall not interfere with any similar rights or permit(s) previously granted to any other party, except as otherwise provided by law.

12. Permittee shall include documentation which describes the facilities to be constructed. Permittee, its successors and assigns, agree as a condition of the granting of the permit to construct and maintain any and all permitted facilities or other encroachments in strict accordance with the submitted and approved permit documentation and the policies and procedures of the Department. Permittee, its successors and assigns, shall not use facilities authorized herein in any manner contrary to that prescribed by the approved permit. Only normal usage as contemplated by the parties and by this application and routine maintenance are authorized by the permit.

13. Permittee, its successors and assigns, at all times from the date permitted work is commenced until such time as all permitted facilities or other encroachments are removed from the right-of-way and the right-of-way restored, **shall defend, protect, indemnify and save harmless** the Department from any and all liability claims and demands arising out of the work, encroachment, maintenance, or other undertaking by the permittee, its successors and assigns, related or undertaken pursuant to the granted permit, due to any claimed act or omission by the permittee, its servants, agents, employees, or contractors. This provision shall not inure to the benefit of any third party nor operate to enlarge any liability of the Department beyond that existing at common law or otherwise if this right to indemnity did not exist.

14. Upon a violation of any provision of the permit, or otherwise in its reasonable discretion, the Department may require additional action by the permittee, its successors and assigns, up to and including the removal of the encroachment and restoration of the right-of-way. In the event additional actions required by the Department under the permit are not undertaken as ordered and within a reasonable time, the Department may in its discretion cause those or other additional corrective actions to be undertaken and the Department shall recover the reasonable costs of those corrective actions from the permittee, its successors and assigns.

15. Permittee, its successors and assigns, shall use the encroachment premises in compliance with all requirements of federal law and regulation, including those imposed pursuant to Title VI of the Civil Right Act of 1964 (42 U.S.C. § 2000d et seq.) and the related regulations of the U.S. Department of Transportation in Title 49 C.F.R. Part 21, all as amended.

16. Permittee, its successors and assigns, agree that if the Department determines it is necessary for the facilities or other encroachment authorized by the permit to be removed, relocated or reconstructed in connection with the reconstruction, relocation or improvement of a highway, the Department may revoke permission for the



APPLICATION FOR ENCROACHMENT PERMIT

encroachment to remain under the permit and may order its removal, relocation or reconstruction by the permittee, its successors and assigns, at the expense of the permittee, except where the Department is required by law to pay any or all of those costs.

17. Permittee agrees that the authorized permit is personal to the permittee and shall remain in effect until such time as (a) the permittee's rights to the adjoining real property to have benefitted from the requested encroachment have been relinquished, (b) until all permit obligations have been assumed by appropriate successors and assigns, and (c) unless and until a written release from permit obligations has been granted by the Department. The permit and its requirements shall also bind the real property to have benefitted from the requested encroachment to the extent permitted by law. The permit and the related encroachment become the responsibility of the successors and assigns of the permittee and the successors and assigns of each property owner benefitting from the encroachment, or the encroachment may not otherwise permissibly continue to be maintained on the right-of-way. (Does not apply to utility encroachments serving the general public.)

18. If work authorized by the permit is within a highway construction project in the construction phase, it shall be the responsibility of the permittee to make personal contact with the Department's Engineer on the project in order to coordinate all permitted work with the Department's prime contractor on the project.

19. This permit is not intended to, nor shall it, affect, alter or alleviate any requirement imposed upon the permittee, its successors and assigns, by any other agency.

20. Permittee, its successors and assigns, agree to contain and maintain all dirt, mud, and other debris emanating from the encroachment away from the surrounding right-of-way and the travel way of the highway hereafter and at all times that its obligations under the permit remain in effect.

NOTICE OF COMPLETION OF ENCROACHMENT PERMIT WORK

PERMITTEE

Name: Meade County Water Dist.
Contact Person: Tim Gossett
Address: 1003 Armory Place
City: Brandenburg
State: Kentucky
Zip: 40108
Telephone: (270) 668-2676

PROJECT IDENTIFICATION

Permit Number: 04-2020-00209

I wish to notify the Department of Highways that the above mentioned permit work and any necessary right-of-way restoration have been completed and are ready for final inspection.

Permittee

Please return this form to the address below when work is completed and ready for final inspection.

Please Return to: Permit Engineer
Department of Highways, District 4 Office
634 East Dixie Highway
Elizabethtown, Kentucky 42701
(270) 766-5066
www.transportation.ky.gov/

LOCATION(S)			
Description	County - Route	Latitude	Longitude
	Meade - KY 1638	37.950786	-86.096942
	Meade - KY 710	37.917137	-86.205489
	Meade - KY 144	37.924174	-86.208431
	Meade - US 60	37.883240	-86.106408
	Meade - KY 1600	37.828678	-86.085448
	Meade - KY 1638	37.950786	-86.096942
	Meade - US 60	37.885777	-86.174833
	Meade - KY 1238	37.865259	-86.135112
	Meade - KY 1238	37.918506	-86.067624

Kentucky Encroachment Permit Tracking

Maintenance Division



[Home](#) [Search+](#) [Reports+](#) [Add Permits](#) [Perks Data](#)

Welcome KYTC\steve.peace! [Sign Out](#)

PERMIT QUICK SEARCH

Search Criteria:

Search Value:

PERMIT GENERAL INFORMATION

Permit/Tracking #: **T04-2020-00209**
District: 04 - Elizabethtown
Filing Date: 4/27/2020
Cancellation Date: 4/27/2021
Completion Date: 10/27/2020
Permit Type: Utilities
Permit Subtype: Water

Permit Status: Active
Created By: Steve Peace
Status Date: 4/27/2020
Created Date: 4/27/2020

Address: 1003 Armory Place
Brandenburg, KY 40108

Phone: (270)668-2676
Email: mcwattg@bbtel.com

Company

[Application](#) [Attachments](#) [Routing](#) [Comments](#) [Locations/Inspections](#) [Indemnity](#) [Approvals](#)

LOCATION DATA

Description:

MOST RECENT INSPECTION

There are no inspections for this location.

County: **Meade**
Route: Multiple
BMP/EMP: Multiple

Activity: New Install
Location: Underground
Contract Agr #:
Bridge #:

Description:

Applicant to upgrade water system to supply service to customers. Multiple locations. See attached plans.

v1.1.7221.17361



Kentucky Transportation Cabinet
200 Mero Street, Frankfort, KY 40622
Copyright © 2010 Commonwealth of Kentucky. All rights reserved.
[Privacy](#) | [Security](#) | [Disclaimer](#) | [Accessibility](#)



March 18, 2020

Mr. Jake Riggs

Permits Engineer
KYTC – District 4
634 E Dixie Ave
Elizabethtown, KY 42701

RE: **Encroachment Permits**
Meade County Water District (MCWD) 2019 Water System Improvements

Dear Jacob,

To improve water system flows and pressure, improve reliability (by providing grid ties), and extend water into unserved areas, MCWD is planning to extend 96,900 miles of new water mains along/adjacent to public roadways including both County and State maintained routes.

These proposed line extensions include portions along KY 1600, KY 1238, KY 710, 261 and US 60. The grid-ties include the intersection of Fred Fackler Road and KY 710, the intersection of M. Cain Road and KY 1638, and portions of KY 1238 and US 60. The encroachments include parallel installations and perpendicular crossings.

The proposed water lines are 4", 6" or 8" in size and include both PVC/DI piping materials. Installations are proposed at the back of right-of-way at minimum cover depth of 42-inches. All proposed road crossings will be done with bore and jack with steel encasement pipe. All 4" and 6" carrier pipe will have 12" steel encasements at road crossings, and all 8" carrier pipe will have 14" steel encasements at road crossings.

Attached are plans and permits for all of the state roads involved for your review.

If you should have any questions pertaining to the approval of this project, please do not hesitate to call me at 502-909-3264.

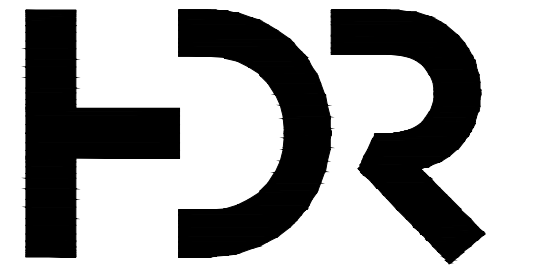
Sincerely,

Kari Nunley, EIT
Civil EIT
D. 502.909.3264
Kari.nunley@hdrinc.com

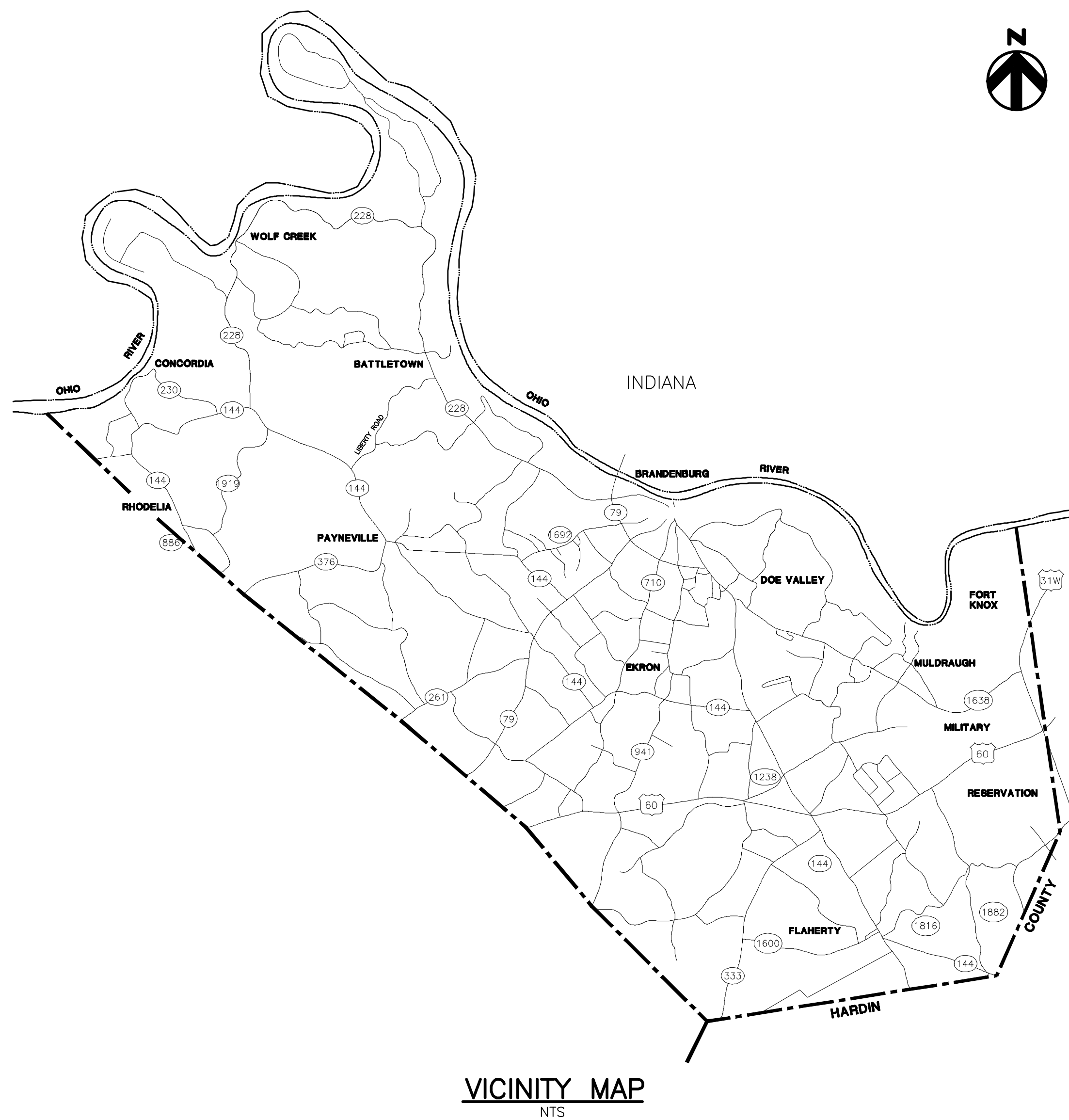
Copy: Mr. Tim Gossett, General Manager/MCWD

401 West Main Street, Suite 500
Louisville, KY 40202-2936
(502) 909-3234

hdrinc.com



MEADE COUNTY
WATER DISTRICT



Contract Drawings For

Meade County Water District 2019 Water System Improvements

General / Civil

Project No.
10175028

Louisville, KY
March 2020

INDEX OF DRAWINGS

GENERAL

- G-01 COVER
- G-02 GENERAL NOTES, UTILITY INFORMATION, AND LEGEND
- G-03 PLAN INDEX SHEET

CIVIL

LINE EXTENSIONS

C-01	LINE "A" - STA. 0+00 TO STA. 18+00	KY 1600 - ST. MARTINS ROAD
C-02	LINE "A" - STA. 18+00 TO STA. 36+00	KY 1600 - ST. MARTINS ROAD
C-03	LINE "A" - STA. 36+00 TO STA. 54+00	KY 1600 - ST. MARTINS ROAD
C-04	LINE "A" - STA. 54+00 TO STA. 72+00	KY 1600 - ST. MARTINS ROAD
C-05	LINE "A" - STA. 72+00 TO STA. 83+50	KY 1600 - ST. MARTINS ROAD
C-06	LINE "A1" - STA. 0+00 TO STA. 18+00	VESSELS ROAD
C-07	LINE "A1" - STA. 18+00 TO STA. 30+00	VESSELS ROAD
C-08	LINE "A2" - STA. 0+00 TO STA. 18+00	TUCKER ROAD
C-09	LINE "A2" - STA. 18+00 TO STA. 25+50	TUCKER ROAD
C-10	LINE "A3" - STA. 0+00 TO STA. 37+00	LANCASTER ROAD
C-11	LINE "A3" - STA. 37+00 TO STA. 74+00	LANCASTER ROAD
C-12	LINE "A3" - STA. 74+00 TO STA. 109+50	LANCASTER ROAD
C-13	LINE "B" - STA. 0+00 TO STA. 18+00	KY 1238 - STITH VALLEY ROAD
C-14	LINE "B" - STA. 18+00 TO STA. 36+00	KY 1238 - STITH VALLEY ROAD
C-15	LINE "B" - STA. 36+00 TO STA. 54+00	KY 1238 - STITH VALLEY ROAD
C-16	LINE "B" - STA. 54+00 TO STA. 77+00	KY 1238 - STITH VALLEY ROAD / SPRINGDALE ROAD
C-17	LINE "B" - STA. 77+00 TO STA. 95+00	SPRINGDALE ROAD
C-18	LINE "C" - STA. 0+00 TO STA. 18+00	KENNEDY ROAD
C-19	LINE "C" - STA. 18+00 TO STA. 39+00	KENNEDY ROAD / KY 710 - OLD STATE ROAD
C-20	LINE "C" - STA. 39+00 TO STA. 57+50	KY 710 - OLD STATE ROAD
C-21	LINE "C" - STA. 57+50 TO STA. 75+00	KY 710 - OLD STATE ROAD
C-22	LINE "C1" - STA. 0+00 TO STA. 16+50	RIDGE POINT DRIVE
C-23	LINE "C2" - STA. 0+00 TO STA. 17+50	POINT SALEM ROAD
C-24	LINE "D" - STA. 0+00 TO STA. 21+00	COUNTRY LANE
C-25	LINE "E" - STA. 0+00 TO STA. 18+00	KY 703 - SANDY HILL ROAD
C-26	LINE "E" - STA. 18+00 TO STA. 37+00	KY 703 - SANDY HILL ROAD
C-27	LINE "E1" - STA. 0+00 TO STA. 15+50	GOBBLER KNOB ROAD
C-28	LINE "F" - STA. 0+00 TO STA. 18+00	CHARLIE PILE ROAD
C-29	LINE "F" - STA. 18+00 TO STA. 36+00	CHARLIE PILE ROAD
C-30	LINE "F" - STA. 36+00 TO STA. 42+50	CHARLIE PILE ROAD
C-31	LINE "F1" - STA. 0+00 TO STA. 25+00	GUY COURT
C-32	LINE "F2" - STA. 0+00 TO STA. 23+00	FALLEN ROAD / OAKS LANE
C-33	LINE "G" - STA. 0+00 TO STA. 11+00	US 60
C-34	LINE "H" - STA. 0+00 TO STA. 15+50	FORREST HILLS ROAD
C-35	LINE "I" - STA. 0+00 TO STA. 15+50	GREEN MEADOWS ROAD
GRID TIES		
C-36	LINE "1" - STA. 0+00 TO STA. 13+00	FRED FACKLER ROAD
C-37	LINE "1" - STA. 13+00 TO STA. 35+00	FRED FACKLER ROAD
C-38	LINE "1" - STA. 35+00 TO STA. 57+00	FRED FACKLER ROAD
C-39	LINE "1" - STA. 57+00 TO STA. 66+50	FRED FACKLER ROAD
C-40	LINE "2" - STA. 0+00 TO STA. 24+50	TAMMY LANE & WILLARDS LANE
C-41	LINE "3" - STA. 0+00 TO STA. 21+00	BUCK GROVE ROAD
C-42	LINE "4" - STA. 0+00 TO STA. 6+50	M. CAIN ROAD / KY 1638 - OLD MILL ROAD
C-43	LINE "5" - STA. 0+00 TO STA. 19+00	WHELAN ROAD
C-44	LINE "6" - STA. 0+00 TO STA. 18+00	US 60
C-45	LINE "6" - STA. 18+00 TO STA. 37+00	US 60
C-46	LINE "7" - STA. 0+00 TO STA. 18+00	FARRIS ROAD
C-47	LINE "7" - STA. 18+00 TO STA. 36+50	FARRIS ROAD
C-48	LINE "8" - STA. 0+00 TO STA. 16+00	KY 1238 - GARRETT ROAD
C-49	LINE "8" - STA. 16+00 TO STA. 33+00	KY 1238 - GARRETT ROAD
C-50	LINE "8" - STA. 33+00 TO STA. 50+00	KY 1238 - GARRETT ROAD
C-51	LINE "8" - STA. 50+00 TO STA. 65+00	KY 1238 - GARRETT ROAD
C-52	LINE "9" - STA. 0+00 TO STA. 13+00 & LINE "9A" - STA. 0+00 TO STA. 9+50	SPIKE BUCK DRIVE & FORK HORN LANE / DOE COURT
C-53	LINE "10" - STA. 0+00 TO STA. 12+50 & LINE "10A" - STA. 0+00 TO STA. 4+50	FAWN LANE & WHITE TAIL COURT
STANDARD DETAILS		
C-54	STANDARD DETAILS	
C-55	MAINTENANCE OF TRAFFIC DETAILS	

GENERAL NOTES:

1. LOCATIONS SHOWN FOR EXISTING UTILITIES ARE APPROXIMATE AND ARE BASED ON AVAILABLE DRAWINGS AND FIELD INFORMATION. OTHER UTILITIES MAY EXIST WHICH ARE NOT SHOWN ON THE PLANS. CONTRACTOR SHALL DETERMINE EXACT LOCATIONS BEFORE EXCAVATING FOR NEW FACILITIES. CONTRACTOR SHALL INVESTIGATE ALL AREAS FOR THE PRESENCE OF EXISTING UTILITIES PRIOR TO ANY EXCAVATION.
2. KENTUCKY STATUTE (KRS 367) REQUIRES THAT ALL EXCAVATORS PLANNING EXCAVATION OR DEMOLITION WORK SHALL NOTIFY AND ALERT ALL UTILITY COMPANIES IN THE AREA AND/OR UNDERGROUND PROTECTION SERVICE SUCH AS KENTUCKY811 (811) AT LEAST TWO (2) WORKING DAYS BEFORE COMMENCING THE PLANNED EXCAVATION OR DEMOLITION ACTIVITIES.
3. WHERE THE WATERLINE IS OUTSIDE OF RIGHT-OF-WAY THE PERMANENT EASEMENT IS TYPICALLY 15 FEET WIDE, UNLESS OTHERWISE NOTED ON THE PLANS.
4. THE CONTRACTOR SHALL NOTIFY THE OWNER AND ENGINEER TWO (2) WORKING DAYS IN ADVANCE OF ANY WORK THAT REQUIRES EXISTING UTILITIES TO BE TEMPORARILY TAKEN OUT OF SERVICE.
5. LOCATIONS SHOWN FOR AIR RELEASE VALVES ARE APPROXIMATE. ACTUAL HIGH POINTS SHALL BE FIELD LOCATED AND APPROVED BY THE ENGINEER PRIOR TO VALVE INSTALLATION.
6. STATIONS SHOWN ON THE WATER LINE ARE FOR REFERENCE ONLY AND DO NOT REFLECT THE EXACT LENGTH OF PIPE REQUIRED FOR CONSTRUCTION.

KENTUCKY DEPARTMENT OF HIGHWAYS (KDOH) GENERAL NOTES:

1. WATER MAIN INSTALLED INSIDE STATE RIGHT-OF-WAY SHALL BE LOCATED WITHIN 3 TO 5 FEET OF THE RIGHT-OF-WAY UNLESS OTHERWISE SHOWN ON THE PLANS.
2. WATER MAIN LOCATED MORE THAN 5 FEET FROM THE EDGE OF THE RIGHT-OF-WAY SHALL BE INSTALLED WITH A MINIMUM DEPTH OF COVER OF 42 INCHES.
3. WATER VALVES, HYDRANTS AND OTHER APPURTENANCES SHALL BE INSTALLED NO CLOSER THAN 3- FEET FROM DITCH LINE.
4. UNDERGROUND UTILITIES CROSSING ANY ENTRANCE OR CROSSROADS PAVED WITH CONCRETE OR ASPHALT SURFACE INSIDE STATE RIGHT-OF-WAY SHALL BE INSTALLED BY FREE BORING. OPEN CUTTING OF THESE ENTRANCES WILL BE CONSIDERED ON A CASE BY CASE BASIS. WRITTEN CONSENT MUST BE OBTAINED FROM THE PROPERTY OWNER AND APPROVED BY KDOH AND MCWD.
5. WATER MAIN SHALL NOT BE INSTALLED IN EMBANKMENT FILLS OR BETWEEN EDGE OF PAVEMENT AND DITCH LINE UNLESS SPECIFICALLY NOTED ON PERMITTED PLANS.
6. HYDRANTS OR UTILITY SERVICE BOXES SHOULD BE LOCATED WITHIN 2 FEET OF RIGHT-OF-WAY LINE OR OUTSIDE THE RIGHT-OF-WAY.
7. CONTACT STEVE HALL AT KDOH DISTRICT #4, ELIZABETHTOWN, KY. AT (270) 766-5066 PRIOR TO BEGINNING WORK.

UTILITY INFORMATION:

WATER:	MEADE COUNTY WATER DISTRICT HARDIN COUNTY WATER DISTRICT NO. 1	(270) 422-5006 (270) 351-3222
ELECTRIC:	MEADE COUNTY RECC	(270) 422-2162
CABLE:	INTERMEDIATE	(270) 422-4994
TELEPHONE:	BRANDENBURG TELEPHONE COMPANY	(270) 422-2121
GAS:	ELIZABETHTOWN GAS CONTACT: MATTHEW HOBBS TEXAS GAS MONUMENT CHEMICAL CONTACT: DANNY WILLIAMS	(270) 765-6121 (270) 926-8686 (270) 422-6233

TRANSPORTATION INFORMATION:

STATE:	KDOH DISTRICT #4 ELIZABETHTOWN, KY. CONTACT: CHARLES MASON	(270) 766-5066
COUNTY:	MEADE COUNTY ROAD DEPARTMENT BRANDENBURG, KY. CONTACT: JEFF PADGETT	(270) 422-3577

SOURCE OF CONTROL

KENTUCKY STATE PLANE SINGLE ZONE
NORTH AMERICAN DATUM OF 1983 (NAVD83)



LEGEND

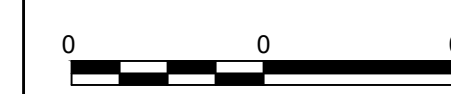
PROPOSED	EXISTING	
		WATER LINE
		GATE VALVE & BOX
		FIELD LOCATED WATER VALVE
		WATER METER
		FIELD LOCATED WATER METER
		FLUSHING HYDRANT ASSEMBLY (INCLUDES VALVE)
		AIR RELEASE VALVE
		PRESSURE REDUCING VALVE (PRV)
		BENDS (90°, 45°, 22-1/2°, 11-1/4°)
		REDUCER
		LEAK DETECTION ASSEMBLY
		FREE BORE
		PROPOSED EASEMENT
		BORE AND JACK/OPEN CUT
		LINE MARKER
		RIGHT-OF-WAY
		PROPERTY LINE
		CREEK
		GAS MAIN
		OVERHEAD UTILITY LINE
		FIBER OPTIC CABLE
		UNDERGROUND CABLE TV
		UNDERGROUND TELEPHONE
		STORM PIPE
		EDGE OF PAVEMENT
		EDGE OF SHOULDER
		GRAVEL DRIVE
		ASPHALT PAVEMENT DRIVE
		CONCRETE PAVEMENT DRIVE



PROJECT MANAGER	KEVIN J. BRIAN
DESIGNED BY	KEVIN J. BRIAN
DRAWN BY	WILLIAM M. GUMM
QA / QC	
PROJECT NUMBER	10175028

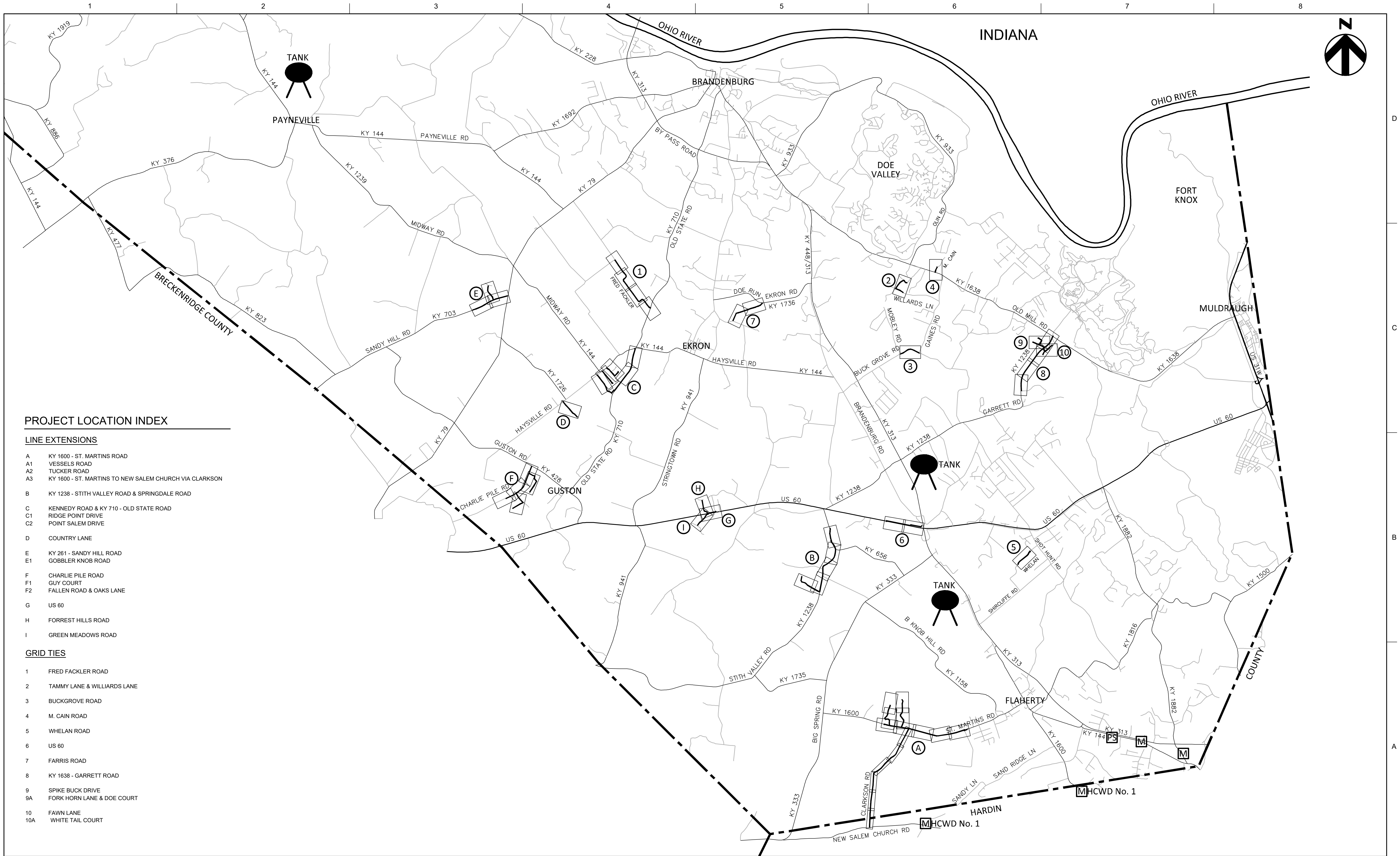
**MEADE COUNTY WATER DISTRICT
WATER SYSTEM IMPROVEMENTS
MEADE COUNTY, KENTUCKY**

**GENERAL
GENERAL NOTES
AND LEGEND**



FILENAME | G-02.dwg
SCALE | NONE

SHEET
G-02



PROJECT LOCATION INDEX

LINE EXTENSIONS

- A KY 1600 - ST. MARTINS ROAD
- A1 VESSELS ROAD
- A2 TUCKER ROAD
- A3 KY 1600 - ST. MARTINS TO NEW SALEM CHURCH VIA CLARKSON

- B KY 1238 - STITH VALLEY ROAD & SPRINGDALE ROAD

- C KENNEDY ROAD & KY 710 - OLD STATE ROAD
- C1 RIDGE POINT DRIVE
- C2 POINT SALEM DRIVE

- D COUNTRY LANE

- E KY 261 - SANDY HILL ROAD
- E1 GOBBLER KNOB ROAD

- F CHARLIE PILE ROAD
- F1 GUY COURT
- F2 FALLEN ROAD & OAKS LANE

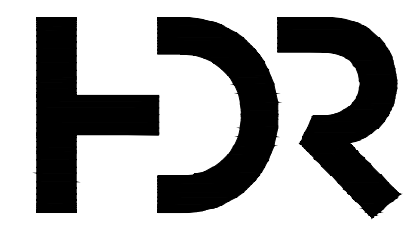
- G US 60

- H FORREST HILLS ROAD

- I GREEN MEADOWS ROAD

GRID TIES

- 1 FRED FACKLER ROAD
- 2 TAMMY LANE & WILLIARDS LANE
- 3 BUCKGROVE ROAD
- 4 M. CAIN ROAD
- 5 WHELAN ROAD
- 6 US 60
- 7 FARRIS ROAD
- 8 KY 1638 - GARRETT ROAD
- 9 SPIKE BUCK DRIVE
- 9A FORK HORN LANE & DOE COURT
- 10 FAWN LANE
- 10A WHITE TAIL COURT



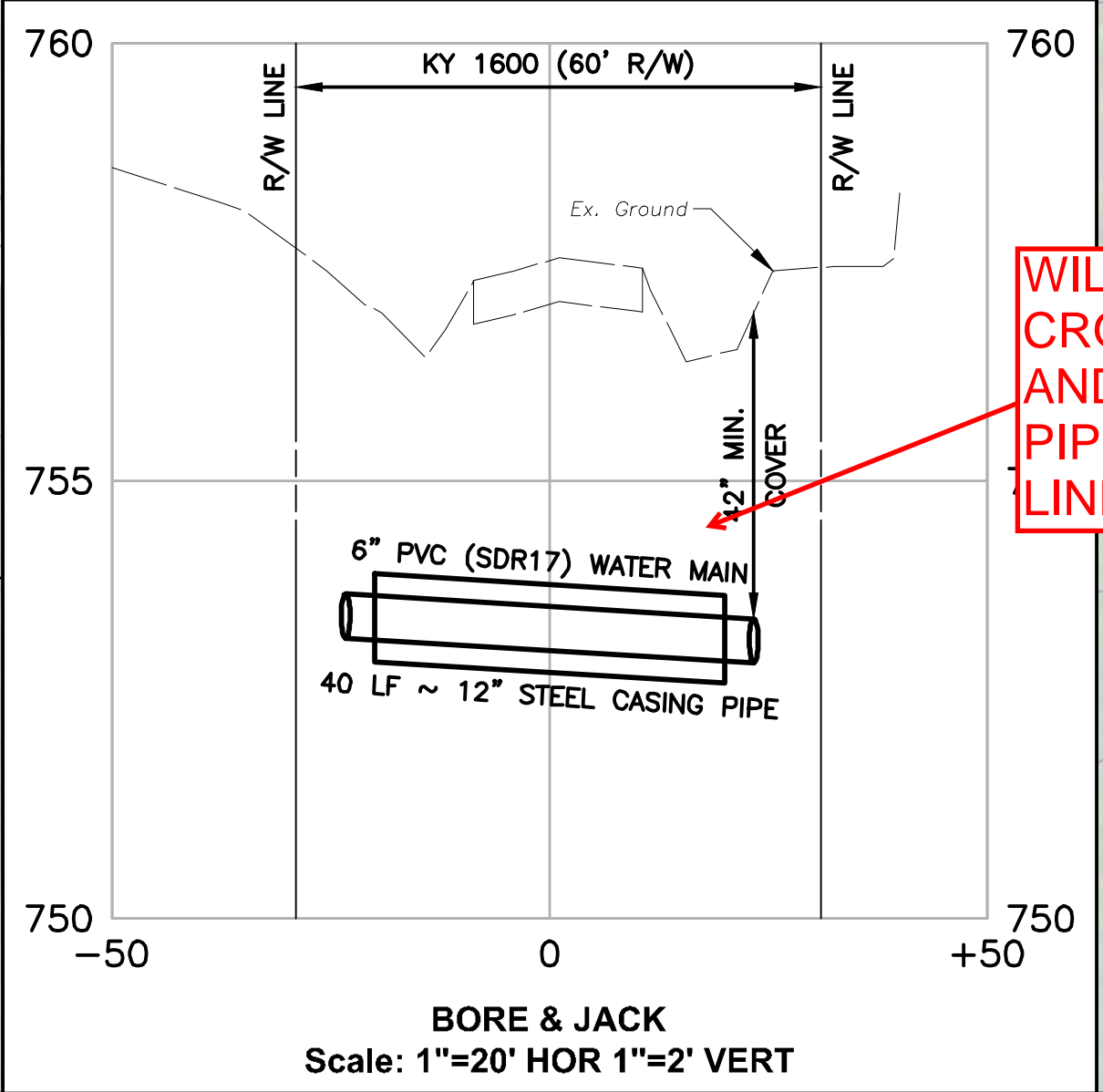
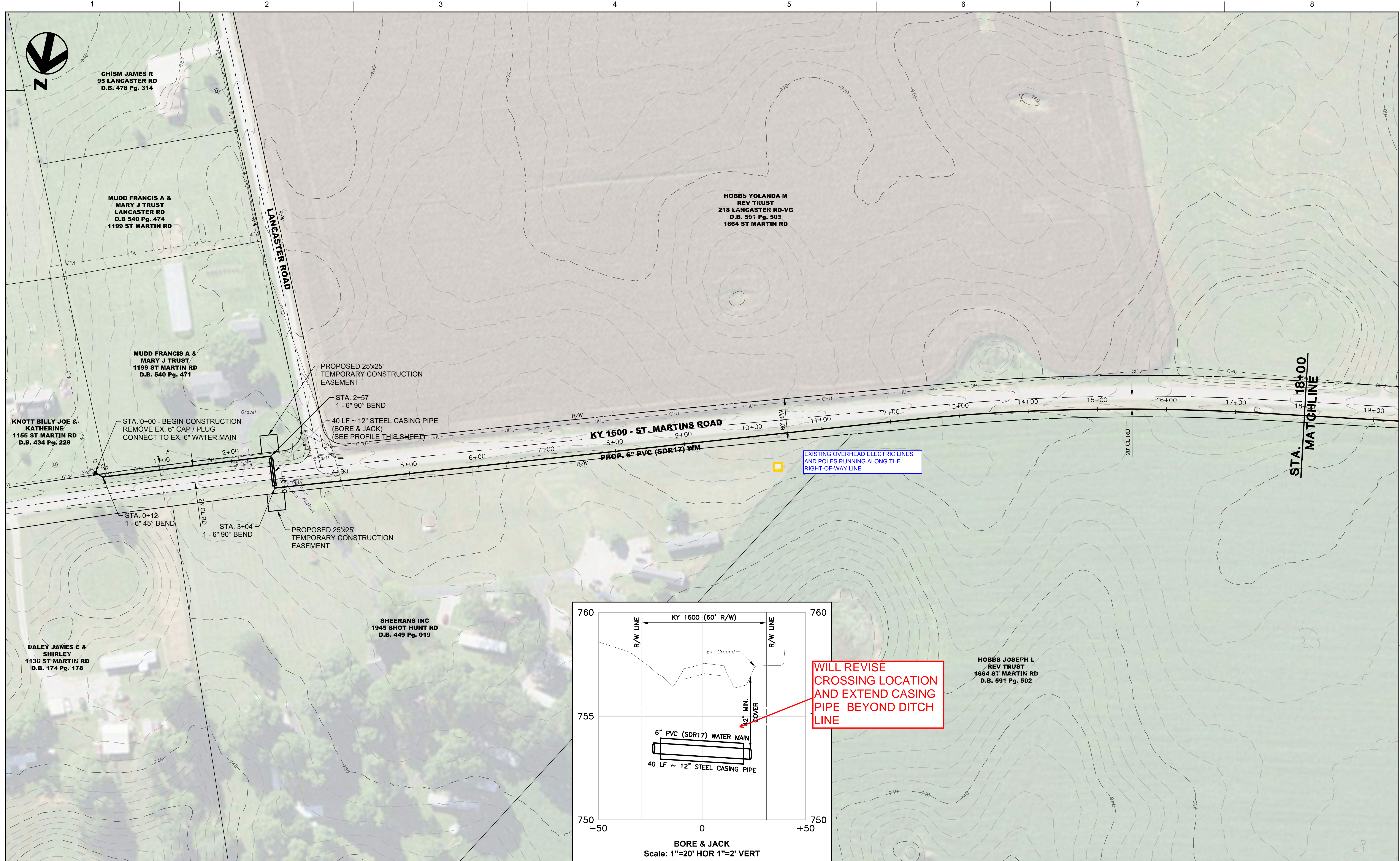
PROJECT MANAGER	KEVIN J. BRIAN
DESIGNED BY	KEVIN J. BRIAN
DRAWN BY	WILLIAM M. GUMM
QA / QC	
PROJECT NUMBER	10175028

ISSUE	DATE	DESCRIPTION

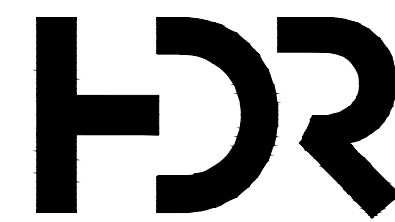
**MEADE COUNTY WATER DISTRICT
WATER SYSTEM IMPROVEMENTS
MEADE COUNTY, KENTUCKY**

**GENERAL
PLAN INDEX SHEET**





WILL REVISE CROSSING LOCATION AND EXTEND CASING PIPE BEYOND DITCH LINE



PROJECT MANAGER	KEVIN J. BRIAN
DESIGNED BY	KEVIN J. BRIAN
DRAWN BY	WILLIAM M. GUMM
QA / QC	
PROJECT NUMBER	10175028

**MEADE COUNTY WATER DISTRICT
WATER SYSTEM IMPROVEMENTS
PROPOSED LINE EXTENSIONS**



**LINE "A"
KY 1600 - ST. MARTINS ROAD
PLAN SHEET
STA. 0+00 TO STA. 18+00**

FILENAME Plan-A.dwg
SCALE 1" = 60'
SHEET
C-01

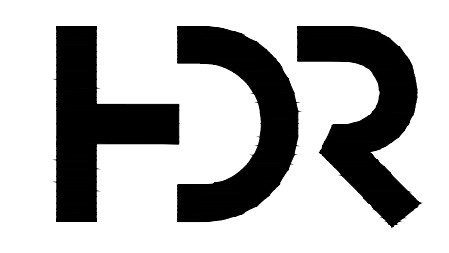


HOBBS YOLANDA M
REV TRUST
218 LANCASTER RD-VG
D.B. 591 Pg. 505
1664 ST MARTIN RD

HOBBS JOSEPH L
REV TRUST
1664 ST MARTIN RD
D.B. 591 Pg. 502

AVOID EXISTING SINKHOLE SIDE SLOPES

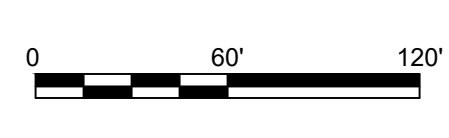
EXISTING OVERHEAD ELECTRIC LINES
AND POLES RUNNING ALONG THE
RIGHT-OF-WAY LINE



ISSUE	DATE	DESCRIPTION

PROJECT MANAGER	KEVIN J. BRIAN
DESIGNED BY	KEVIN J. BRIAN
DRAWN BY	WILLIAM M. GUMM
QA / QC	
PROJECT NUMBER	10175028

**MEADE COUNTY WATER DISTRICT
WATER SYSTEM IMPROVEMENTS
PROPOSED LINE EXTENSIONS**



FILENAME | Plan-A.dwg
SCALE | 1" = 60'

**LINE "A"
KY 1600 - ST. MARTINS ROAD
PLAN SHEET
STA. 18+00 TO STA. 36+00**

SHEET
C-02



HOBBS YOLANDA M
REV TRUST
218 LANCASTER RD-VG
D.B. 591 Pg. 505
1664 ST MARTIN RD

STRANEY
PROPERTIES LLC
2021 ST MARTIN RD
D.B. 604 Pg. 342

HOBBS JOSEPH L REV
TRUST
1664 ST MARTIN RD
D.B. 591 Pg. 502

HOBBS JOSEPH E &
CATHY
3840 ST MARTIN RD
D.B. 453 Pg. 238

KY 1600 - ST. MARTINS ROAD

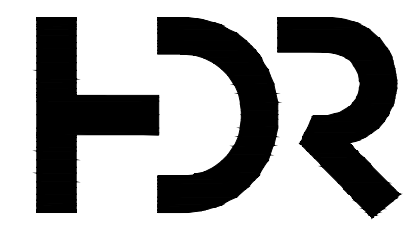
PROP. 6" PVC (SDR17) WM

EXISTING OVERHEAD ELECTRIC LINES
AND POLES RUNNING ALONG THE
RIGHT-OF-WAY LINE

STA. 52+75
1 - FLUSHING HYDRANT ASSEMBLY

STA. 36+00
MATCHLINE

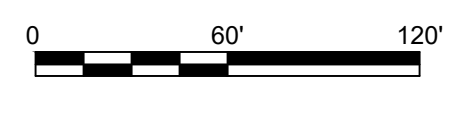
STA. 54+00
MATCHLINE



ISSUE	DATE	DESCRIPTION

PROJECT MANAGER	KEVIN J. BRIAN
DESIGNED BY	KEVIN J. BRIAN
DRAWN BY	WILLIAM M. GUMM
QA / QC	
PROJECT NUMBER	10175028

MEADE COUNTY WATER DISTRICT
WATER SYSTEM IMPROVEMENTS
PROPOSED LINE EXTENSIONS



FILENAME | Plan-A.dwg
SCALE | 1" = 60'

LINE "A"
KY 1600 - ST. MARTINS ROAD
PLAN SHEET
STA. 36+00 TO STA. 54+00

SHEET
C-03