

## Architectural Survey

Horus Kentucky 1 Solar ■ Simpson Co., Kentucky

June 2021 ■ Terracon Project No. 7320P073



In regard to the National Register Criteria for Evaluation (National Register Bulletin 15):

**Criterion A** – This resource has no association with significant events or periods in our history's past.

**Criterion B** – This resource has no known association with the lives of significant persons in our past.

**Criterion C** – This resource has been significantly altered and no longer conveys significance as a ca. 1900s central hallway house.

**Criterion D** – This resource is unlikely to yield significant information about the history of Simpson County, Kentucky.

This property is not associated with significant events or periods in our history's past, has no known association with the lives of significant persons, no longer retains a majority of its character defining features, and no longer conveys significance as a ca. 1900s central hallway house. Based on this evaluation, Resource No. SI 142 – Minis Hammond Place is recommended ineligible for inclusion in the NRHP.



Figure 20. Resource No. SI 142, facing northeast.



---

**Figure 21. Resource No. SI 142, facing southeast.**

#### **4.11 Resource No. SI 516**

Resource No. SI 516 is a ca. 1920s agricultural complex located at [REDACTED] that is surrounded by the project area (Figures 1, 22, and 23). The resource consists of two front gable barns dating from ca. 1920 and ca. 1950, respectively. Located south of the barns are three metal grain bins, with the earliest being a type manufactured between ca. 1940-1970 (United States Department of Agriculture 1975), and the second type being a modern style dating between ca. 1990-present day (AgCo 2020). The older of the two barns is a two-story front gabled barn with vertical board siding with the principal façade facing east. Located on the east façade is a rectangular gable vent. Extending off of the north elevation of the barn is a shed roof addition with a double door large entry bay. Covering the barn is a pressed sheet metal roof. The second barn, dating from the ca. 1950s, is a single-story front gable barn facing the east. Located on the east façade of the barn is a single-entry bay covered by a sliding door. Covering the barn is pressed sheet metal siding and roofing. Located to the south of the barns are three metal grain bins. The two smaller bins, dating as early as ca. 1940, are covered by corrugated steel sides and standing seam roofing. The third and largest bin, dating between the 1990s and present day, is constructed from the same materials with the addition of ladders for access and venting in the roof. All three bins are constructed on concrete slab foundations.

## Architectural Survey

Horus Kentucky 1 Solar ■ Simpson Co., Kentucky

June 2021 ■ Terracon Project No. 7320P073



This resource no longer retains a majority of its original design and materials. Alterations have obscured its historic fabric, and it no longer exhibits a vernacular workmanship style. Due to the addition of modern structures, this resource no longer evokes an early twentieth century agricultural feeling. The resource has remained on its original site of construction and is still located in a rural setting. Therefore, it has only retained integrity in location and setting but does not retain integrity in design, materials, feeling, or workmanship style.

In regard to the National Register Criteria for Evaluation (National Register Bulletin 15):

**Criterion A** – This resource has no association with significant events or periods in our history's past.

**Criterion B** – This resource has no known association with the lives of significant persons in our past.

**Criterion C** – This resource has been significantly altered and no longer conveys significance as a ca. 1920s agricultural complex.

**Criterion D** – This resource is unlikely to yield significant information about the history of Simpson County, Kentucky.

This property is not associated with significant events or periods in our history's past, has no known association with the lives of significant persons, no longer retains a majority of its character defining features, and no longer conveys significance as a ca. 1920s agricultural complex. Based on this evaluation, Resource No. SI 516 is recommended ineligible for inclusion in the NRHP.

**Architectural Survey**

Horus Kentucky 1 Solar ■ Simpson Co., Kentucky  
June 2021 ■ Terracon Project No. 7320P073



---

**Figure 22. Resource No. SI 516, facing east.**



---

**Figure 23. Resource No. SI 516, facing northeast.**



#### 4.12 Resource No. SI 517

Resource No. SI 517 is a ca. 1970s linear ranch house located at [REDACTED], approximately 600 meters south of the project area (Figures 1, 24, and 25). The resource consists of an asymmetrical, rectangular plan facing the east. Located on the east façade are two front entry doors beneath a partial veranda, supported by scrolled metal porch supports. Part of the veranda has been enclosed with non-historic screening and vertical board siding. Located on the north end of the east façade is a front gable projection with a single non-historic one-over-one double hung sash window. On the south side of the east façade is an integral garage with a single-bay entry door, and a newer metal roof. Exterior materials on the resource consist of brick veneer siding, non-historic standing seam metal roofing, and a single corbeled internal brick chimney offset toward the north elevation. The resource has been heavily altered with a large shed roof addition on the west elevation, and the replacement of historic windows.

This resource no longer retains a majority of its original design and materials. Alterations consisting of replaced window sashes and roof materials have obscured its historic fabric and it no longer exhibits a vernacular workmanship style. It has remained on its original site of construction, is still located in a rural setting, and evokes a mid-century rural residence feeling. Therefore, it has only retained integrity in location, setting, and feeling but does not retain integrity in design, materials, or workmanship style.

In regard to the National Register Criteria for Evaluation (National Register Bulletin 15):

**Criterion A** – This resource has no association with significant events or periods in our history's past.

**Criterion B** – This resource has no known association with the lives of significant persons in our past.

**Criterion C** – This resource has been significantly altered and no longer conveys significance as a ca. 1970s linear ranch house.

**Criterion D** – This resource is unlikely to yield significant information about the history of Simpson County, Kentucky.

This property is not associated with significant events or periods in our history's past, has no known association with the lives of significant persons, no longer retains a majority of its character defining features, and no longer conveys significance as a ca. 1970s linear ranch house. Based on this evaluation, Resource No. SI 517 is recommended ineligible for inclusion in the NRHP.

**Architectural Survey**

Horus Kentucky 1 Solar ■ Simpson Co., Kentucky

June 2021 ■ Terracon Project No. 7320P073



---

**Figure 24. Resource No. SI 517, facing east.**



---

**Figure 25. Resource No. SI 517, facing southeast.**

#### **4.13 Resource No. SI 518**

Resource No. SI 518 is a ca. 1940s linear ranch house located at [REDACTED], approximately 275 meters south of the project area (Figures 1, 26, and 27). The resource consists of a rectangular plan facing the east. Located on the east façade is a central front entry door, flanked by non-historic one-over-one double hung sash windows. Located on the north elevation of the house is a gabled addition that was likely a garage or carport that has been enclosed. Exterior materials consist of non-historic vinyl siding, and pressed sheet metal roofing. Located within the roof surface is a single brick chimney, offset to the north elevation.

This resource no longer retains a majority of its original design and materials. Alterations, including the replacement of windows and roof materials have obscured its historic fabric and it no longer exhibits a vernacular workmanship style. The resource has remained on its original site of construction is still located in a rural setting, and evokes a mid-century rural residence feeling. Therefore, it has only retained integrity in location, setting, and feeling but does not retain integrity in design, materials, or workmanship style.

In regard to the National Register Criteria for Evaluation (National Register Bulletin 15):

**Criterion A** – This resource has no association with significant events or periods in our history's past.

**Criterion B** – This resource has no known association with the lives of significant persons in our past.

**Criterion C** – This resource has been significantly altered and no longer conveys significance as a ca. 1940s linear ranch house.

**Criterion D** – This resource is unlikely to yield significant information about the history of Simpson County, Kentucky.

This property is not associated with significant events or periods in our history's past, has no known association with the lives of significant persons, no longer retains a majority of its character defining features, and no longer conveys significance as a ca. 1940s linear ranch house. Based on this evaluation, Resource No. SI518 is recommended ineligible for inclusion in the NRHP.



**Architectural Survey**

Horus Kentucky 1 Solar ■ Simpson Co., Kentucky

June 2021 ■ Terracon Project No. 7320P073



---

**Figure 26. Resource No. SI 518, facing west.**



---

**Figure 27. Resource No. SI 518, facing southwest.**



#### 4.14 Resource No. SI 519 – Tyree Chapel Church of Christ

Resource No. SI 519 -Tyree Chapel Church of Crist is a ca. 1910 hipped roof church located at [REDACTED], approximately 430 meters south of the project area (Figures 1, 28, and 29). The resource consists of a rectangular, symmetrical plan with the principal facade facing east. Located on the east façade is a front gabled addition with a central double door entryway. Two non-historic additions are located on the north and south elevations, consisting of side-oriented gable structures with concrete block foundations and secondary single-entry doors. Windows consist of non-historic one-over-one double hung sash windows. The resource has been heavily altered with multiple additions and the replacement of exterior materials, consisting of vinyl siding and pressed sheet metal roofing.

Located north of the church building is a small cemetery (Figure 30). The cemetery consists of approximately 50 burials dating between 1898 and 2020. Tombstones in the cemetery consist of a combination of upright, die-in-socket, and horizontal monuments. The most common tombstone materials are marble and granite. All burials in the cemetery are oriented facing the east and are evenly spaced in rows running north to south. Common family names that appear in the cemetery are Tyree, Kitchens, Mayes, Hicks, Summers, and Langston.

These resources no longer retain a majority of their original design and materials. Alterations have obscured its historic fabric, consisting of replaced siding multiple additions, and it no longer exhibits a vernacular workmanship style. The resources have remained on their original site of construction is still located in a rural setting and evokes an early nineteenth century rural church and cemetery feeling. Therefore, the have only retained integrity in location, setting, and feeling but does not retain integrity in design, materials, or workmanship style.

In regard to the National Register Criteria for Evaluation (National Register Bulletin 15):

**Criterion A** – This resource has no association with significant events or periods in our history’s past.

**Criterion B** – This resource has no known association with the lives of significant persons in our past.

**Criterion C** – This resource has been significantly altered and no longer conveys significance as a ca. 1910 hip roofed church.

**Criterion D** – This resource is unlikely to yield significant information about the history of Simpson County, Kentucky.

This property is not associated with significant events or periods in our history’s past, has no known association with the lives of significant persons, no longer retains a majority of its character defining features, and no longer conveys significance as a ca. 1910 hipped roof church.

## Architectural Survey

Horus Kentucky 1 Solar ■ Simpson Co., Kentucky

June 2021 ■ Terracon Project No. 7320P073



Cemeteries and graves do not normally qualify for NRHP listing unless they are associated with persons of exceptional significance and are the only or best physical representation associated with that person; of outstanding age within its geographic and cultural context; feature distinctive design features; or were part of noteworthy historic events (Potter and Boland 1992, National Register Bulletin 41). The Tyree Chapel Cemetery is not associated with a significant historic figure or event and is unlikely to yield information important to the history of the area. The Cemetery does represent distinctive characteristics of a type, period, and method of construction, however the cemetery is not the best example of a late nineteenth century rural cemetery. Based on this evaluation, Resource No. SI 519 – Tyree Chapel Church of Christ and Tyree Chapel Cemetery is recommended ineligible for inclusion in the NRHP.



Figure 28. Resource No. SI 519 - Tyree Chapel Church of Christ, facing northwest.

**Architectural Survey**

Horus Kentucky 1 Solar ■ Simpson Co., Kentucky

June 2021 ■ Terracon Project No. 7320P073



---

**Figure 29. Resource No. SI 519- Tyree Chapel Church of Christ, facing northeast.**



---

**Figure 30. Resource No. SI 519 - Tyree Chapel Church of Christ Cemetery, facing northwest.**



#### **4.15 Resource No. SI 520**

Resource No. SI 520 consists of a ca. 1930s cross gabled bungalow located at [REDACTED] and is surrounded by the project area on the north, south, and west (Figures 1, 31, and 32). The resource consists of an asymmetrical rectangular plan with the principal façade facing the southeast. Located on the southeast façade of the resource is a front facing gable offset to the east side of the front façade with paired one-over-one double hung sash windows and a front entry door covered by a gabled stoop. Flanking the front entry door to the west is a large non-historic single pane picture window. A secondary entry is located on the west façade covered by a gabled stoop with brick arched supports. Exterior materials consist of brick veneer and asphalt shingle roofing.

This resource retains a majority of its original design and materials and represents design characteristics of an early twentieth century residential structure. The resource has remained on its original site of construction, is still located in a rural setting, and evokes a mid-century rural residence feeling. Therefore, it has retained integrity in design, materials, workmanship style, location, setting, and feeling.

In regard to the National Register Criteria for Evaluation (National Register Bulletin 15):

**Criterion A** – This resource has no association with significant events or periods in our history’s past.

**Criterion B** – This resource has no known association with the lives of significant persons in our past.

**Criterion C** – This resource does not represent a significant example of a ca. 1930s cross gable bungalow house.

**Criterion D** – This resource is unlikely to yield significant information about the history of Simpson County, Kentucky.

This property is not associated with significant events or periods in our history's past and has no known association with the lives of significant persons. Although it retains a majority of its character defining features, it does not represent a significant example of a ca. 1930s cross gable bungalow house. Based on this evaluation, Resource No. SI 520 is recommended ineligible for inclusion in the NRHP.



**Architectural Survey**

Horus Kentucky 1 Solar ■ Simpson Co., Kentucky

June 2021 ■ Terracon Project No. 7320P073



---

**Figure 31. Resource No. SI 520, facing northwest.**



---

**Figure 32. Resource No. SI 520, facing north.**

#### 4.16 Resource No. SI 522

Resource No. SI 522 is a ca. 1970s linear ranch house located at [REDACTED], approximately 650 meters southwest of the project area (Figures 1 and 33). The resource consists of a rectangular, asymmetrical plan with the principal facade facing east. Located on the east facade is a single front entry door offset to the north. Covering the front entry door is a small front gabled porch supported by scrolled mid-century metal supports. Covering the porch is a front gabled roof with non-historic vinyl siding in the gable. Flanking the front entry door are paired non-historic six-over-six double hung sash windows to the north and single non-historic six-over-six double hung sash windows to the south. A secondary entry door is located on the north elevation flanked by non-historic six-over-six double hung sash windows. Exterior materials on the resource consist of a painted brick veneer and non-historic pressed sheet metal roofing.

Located to the west of the resource is a ca. 1900s front gabled barn facing the north (Figure 34). On the north façade of the barn is a large painting that reads, “See Beautiful Rock City Atop Lookout Mt.” Exterior materials on the barn consist of vertical board siding and pressed sheet metal roofing. Two shed roof additions are located on the east and west of the resource. The barn is heavily deteriorated and no longer retains integrity as a ca. 1900s front gabled barn.

This resource no longer retains a majority of its original design and materials. Alterations have obscured its historic fabric, consisting of replaced windows, pressed sheet metal roofing, and the addition of vinyl siding in the gables, it no longer exhibits a vernacular workmanship style. The resource has remained on its original site of construction is still located in a rural setting, and evokes a mid-century rural residence feeling. Therefore, it has only retained integrity in location, setting, and feeling but does not retain integrity in design, materials, or workmanship style.

In regard to the National Register Criteria for Evaluation (National Register Bulletin 15):

**Criterion A** – This resource has no association with significant events or periods in our history’s past.

**Criterion B** – This resource has no known association with the lives of significant persons in our past.

**Criterion C** – This resource has been significantly altered and no longer conveys significance as a ca. 1970s linear ranch house. The Barn associated with the resource has deteriorated and no longer represents an example of a ca. 1900s front gabled barn.

**Criterion D** – This resource is unlikely to yield significant information about the history of Simpson County, Kentucky.

This property is not associated with significant events or periods in our history's past, has no known association with the lives of significant persons, no longer retains a majority of its character



**Architectural Survey**

Horus Kentucky 1 Solar ■ Simpson Co., Kentucky

June 2021 ■ Terracon Project No. 7320P073



defining features, and no longer conveys significance as a ca. 1970s linear ranch house. Based on this evaluation, Resource No. SI 522 is recommended as being ineligible for inclusion in the NRHP.



---

**Figure 33. Resource No. SI 522, facing northwest.**



---

**Figure 34. Resource No. SI 522, facing southwest.**

#### **4.17 Resource No. SI 523**

Resource No. SI 523 is a ca. 1920s rural store located at [REDACTED], approximately 650 meters southwest of the project area (Figures 1, 35, and 36). The resource consists of an asymmetrical, rectangular plan with the principal facade facing east. Centrally located on the east facade is a front entry door flanked by paired historic three-over-one double hung sash windows. Covering the front entry door is a front gabled porte-cochere supported by wooden supports. Exterior materials consist of a non-historic concrete block foundation, wooden clapboard siding, and non-historic asphalt shingle roofing. Located southwest of the resource is a small side gabled outbuilding. The building consists of two central entry doors, wooden clapboard siding, and pressed sheet metal roofing.

This resource retains a majority of its original design and materials and represents design characteristics of an early twentieth century commercial structure. The resource has remained on its original site of construction, is still located in a rural setting, and evokes a mid-century rural residence feeling. Therefore, it has retained integrity in design, materials, workmanship style, location, setting, and feeling.

In regard to the National Register Criteria for Evaluation (National Register Bulletin 15):

**Criterion A** – This resource has no association with significant events or periods in our history's past.

**Criterion B** – This resource has no known association with the lives of significant persons in our past.

**Criterion C** – This resource does not represent a significant example of a ca. 1920s rural store.

**Criterion D** – This resource is unlikely to yield significant information about the history of Simpson County, Kentucky.

This property is not associated with significant events or periods in our history's past, has no known association with the lives of significant persons, no longer retains a majority of its character defining features, and no longer conveys significance as a ca. 1920s rural store. Based on this evaluation, Resource No. SI 523 is recommended ineligible for inclusion in the NRHP.



**Architectural Survey**

Horus Kentucky 1 Solar ■ Simpson Co., Kentucky

June 2021 ■ Terracon Project No. 7320P073



---

**Figure 35. Resource No. SI 523, facing west.**



---

**Figure 36. Resource No. SI 523, facing southwest.**

#### 4.18 Resource No. SI 524

Resource No. SI 524 is a ca. 1910s central hallway house located at [REDACTED], approximately 700 meters southwest of the project area (Figures 1, 37, and 38). The resource consists of a symmetrical, rectangular plan facing the west. Located on the west façade is a partial veranda covered by a shed roof and supported by non-historic mid-century metal porch supports over brick piers. Located between the brick piers are low brick screen walls serving as guard rails on the veranda. Beneath the veranda is a central entry door, flanked by non-historic paired one-over-one double hung sash windows on the north and a single non-historic one-over-one double hung sash window on the south. Directly above the front entry door, a gabled dormer has been added to the resource with paired, non-historic one-over-one double hung sash windows. A side gabled addition is located on the north elevation of the resource with a secondary entry door facing the west, covered by a small gabled roof. Exterior materials consist of a non-historic concrete block foundation, non-historic asbestos shingle siding, and non-historic asphalt shingle roofing. Landscape features surrounding the resource consist of large old-growth trees and ornamental foundation plantings.

This resource no longer retains a majority of its original design and materials. Alterations have obscured its historic fabric, consisting of replaced windows, the addition of concrete block infill on the foundation, and the addition of asbestos siding. The resource has remained on its original site of construction, is still located in a rural setting, and evokes an early nineteenth century rural residence feeling. Therefore, it has only retained integrity in

location, setting, and feeling but does not retain integrity in design, materials, or workmanship style.

In regard to the National Register Criteria for Evaluation (National Register Bulletin 15):

**Criterion A** – This resource has no association with significant events or periods in our history's past.

**Criterion B** – This resource has no known association with the lives of significant persons in our past.

**Criterion C** – This resource has been significantly altered and no longer conveys significance as a ca. 1910s central hallway house.

**Criterion D** – This resource is unlikely to yield significant information about the history of Simpson County, Kentucky.

This property is not associated with significant events or periods in our history's past, has no known association with the lives of significant persons, no longer retains a majority of its character



**Architectural Survey**

Horus Kentucky 1 Solar ■ Simpson Co., Kentucky

June 2021 ■ Terracon Project No. 7320P073



defining features, and no longer conveys significance as a ca. 1910s central hallway house. Based on this evaluation, Resource No. SI 524 is recommended ineligible for inclusion in the NRHP.



---

**Figure 37. Resource No. SI 524, facing east.**



---

**Figure 38. Resource No. SI 524, facing southeast.**

#### **4.19 Resource No. SI 525**

Resource No. SI 525 is a ca. 1970s linear ranch house located at [REDACTED], approximately 95 meters northwest of the project area (Figures 1 and 39). The resource consists of a rectangular, asymmetrical façade with the principal facade facing northwest. Located on the northwest façade is a partial veranda covered by a half-hipped roof and supported by metal porch supports. Beneath the veranda is a front entry door, flanked on the east by a Chicago window. Flanking the entry door to the west is an integral carport that is covered in non-historic vinyl siding. Exterior materials on the resource consist of a poly-chromatic brick veneer, non-historic vinyl siding, and asphalt shingle roofing.

This resource no longer retains a majority of its original design and materials. Alterations have obscured its historic fabric, consisting of the replacement of historic windows and the addition of vinyl siding, it no longer exhibits a vernacular workmanship style. The resource has remained on its original site of construction, is still located in a rural setting, and evokes a mid-century rural residence feeling. Therefore, it has only retained integrity in location, setting, and feeling but does not retain integrity in design, materials, or workmanship style.

In regard to the National Register Criteria for Evaluation (National Register Bulletin 15):

**Criterion A** – This resource has no association with significant events or periods in our history's past.

**Criterion B** – This resource has no known association with the lives of significant persons in our past.

**Criterion C** – This resource has been significantly altered and no longer conveys significance as a ca. 1970s linear ranch house.

**Criterion D** – This resource is unlikely to yield significant information about the history of Simpson County, Kentucky.

This property is not associated with significant events or periods in our history's past, has no known association with the lives of significant persons, no longer retains a majority of its character defining features, and no longer conveys significance as a ca. 1970s linear ranch house. Based on this evaluation, Resource No. SI 525 is recommended ineligible for inclusion in the NRHP.





Figure 39. Resource No. SI 525, facing southwest.

#### 4.20 Resource No. SI 526

Resource No. SI 526 is a ca. 1920s farm complex located at [REDACTED], approximately 520 meters northwest of the project area (Figures 1 and 40). The resource consists of a one-story side gabled house and several historic and non-historic outbuildings set back from the right-of-way. Due to the resources long distance from the right-of-way, Resource No. SI 526 was not able to be assessed. However, the project area is separated from the resource by I-65 and a wooded area, and the proposed solar farm will not be visible from this resource (Figure 41). Along with this a viewshed analysis conducted in January 2021 shows that the proposed solar farm will not be visible from the resource (Figure 56).

**Architectural Survey**

Horus Kentucky 1 Solar ■ Simpson Co., Kentucky

June 2021 ■ Terracon Project No. 7320P073



---

**Figure 40. Resource No. SI 526, facing northeast.**



---

**Figure 41. View from Resource No. SI 526 back to the project area, facing southeast.**

#### **4.21 Resource No. SI 527**

Resource No. SI 527 is a ca. 1930s cross gabled bungalow located at [REDACTED], approximately 470 meters northeast of the project area (Figures 1 and 42). The resource consists of a rectangular, symmetrical plan with the principal facade facing northwest. Located on the northwest façade of the resource is a central front door flanked by non-historic one-over-one double hung sash windows. The front entry door is covered by a front gable roof supported by wooden supports. This resource has been heavily altered with a small gable addition located on the east elevation and a shed roof addition on the south elevation. Most of the exterior materials have been replaced and consist of non-historic vinyl siding and non-historic asphalt shingle roofing.

This resource no longer retains a majority of its original design and materials. Alterations have obscured its historic fabric, consisting of the replacement of historic window and addition of vinyl siding. The resource has remained on its original site of construction is still located in a rural setting, and evokes an early twentieth century rural residence feeling. Therefore, it has only retained integrity in location, setting, and feeling but does not retain integrity in design, materials, or workmanship style.

In regard to the National Register Criteria for Evaluation (National Register Bulletin 15):

**Criterion A** – This resource has no association with significant events or periods in our history's past.

**Criterion B** – This resource has no known association with the lives of significant persons in our past.

**Criterion C** – This resource has been significantly altered and no longer conveys significance as a ca. 1930s side gabled bungalow.

**Criterion D** – This resource is unlikely to yield significant information about the history of Simpson County, Kentucky.

This property is not associated with significant events or periods in our history's past, has no known association with the lives of significant persons, no longer retains a majority of its character defining features, and no longer conveys significance as a ca. 1930s cross gabled bungalow. Based on this evaluation, Resource No. SI 527 is recommended ineligible for inclusion in the NRHP.





Figure 42. Resource No. SI 527, facing southeast.

#### 4.22 Resource No. SI 528

Resource No. SI 528 is a ca. 1970s courtyard ranch house located at [REDACTED], approximately 760 meters northeast of the project area (Figures 1, 43, and 44). The resource consists of a U-shaped plan with the principal facade facing northeast. Located on the northeast facade is a front entry door off set to the north side of the recessed area. Flanking the entry door to the south are two paired six-over-nine double hung sash windows. Located on either end of the front facade are two front facing gables with non-historic single six-over-six double hung sash windows. Exterior materials consist of a poly-chromatic brick veneer and asphalt shingle roofing. Located within the roof surface is a large three flued chimney.

This resource retains a majority of its original design and materials representing design characteristics of a late twentieth century residential structure. The resource has remained on its original site of construction, is still located in a rural setting, and evokes a mid-century rural residence feeling. Therefore, it has retained integrity in design, materials, workmanship style, location, setting, and feeling.

In regard to the National Register Criteria for Evaluation (National Register Bulletin 15):

**Criterion A** – This resource has no association with significant events or periods in our

**Architectural Survey**

Horus Kentucky 1 Solar ■ Simpson Co., Kentucky

June 2021 ■ Terracon Project No. 7320P073



history's past.

**Criterion B** – This resource has no known association with the lives of significant persons in our past.

**Criterion C** – This resource does not represent a significant example of a ca. 1970s courtyard ranch house.

**Criterion D** – This resource is unlikely to yield significant information about the history of Simpson County, Kentucky.

This property is not associated with significant events or periods in our history's past, has no known association with the lives of significant persons, and retains a majority of its character defining features, but does not represent a significant example of a ca. 1970s courtyard ranch house. Based on this evaluation, Resource No. SI 528 is recommended ineligible for inclusion in the NRHP.



---

**Figure 43. Resource No. SI 528, facing east.**



Figure 44. Resource No. SI 528, facing northeast.

#### 4.23 Resource No. SI 529

Resource No. SI 529 is a ca. 1970s linear ranch house located at [REDACTED], approximately 700 meters east of the project area (Figures 1 and 45). The resource consists of an asymmetrical, rectangular plan with the principal facade facing west. Located on the west façade is a front entry door offset to the south, flanked by non-historic one-over-one double hung sash windows. Covering the house is a projecting hip roof along the five bays around the front-entry door. Exterior materials consist of a poly-chromatic brick veneer and non-historic pressed sheet metal roofing, with a large brick chimney located within the roof surface. Landscape features surrounding the resource consist of a paved driveway and large trees.

This resource retains a majority of its original design and materials and represents design characteristics of a mid-century residential structure. The resource has remained on its original site of construction, is still located in a rural setting, and evokes a mid-century rural residence feeling. Therefore, it has retained integrity in design, materials, workmanship style, location, setting, and feeling.

In regard to the National Register Criteria for Evaluation (National Register Bulletin 15):

**Criterion A** – This resource has no association with significant events or periods in our history's past.



## Architectural Survey

Horus Kentucky 1 Solar ■ Simpson Co., Kentucky

June 2021 ■ Terracon Project No. 7320P073



**Criterion B** – This resource has no known association with the lives of significant persons in our past.

**Criterion C** – This resource does not represent a significant example of a ca. 1970s linear ranch house.

**Criterion D** – This resource is unlikely to yield significant information about the history of Simpson County, Kentucky.

This property is not associated with significant events or periods in our history's past and has no known association with the lives of significant persons. Although it retains a majority of its character defining features, it does not represent a significant example of a ca. 1970s linear ranch house. Based on this evaluation, Resource No. SI 529 is recommended ineligible for inclusion in the NRHP.



---

**Figure 45. Resource No. 529, facing east.**

### 4.24 Resource No. SI 530

Resource No. SI 530 is a ca. 1970s cross-gable ranch house located at [REDACTED], approximately 900 meters east of the project area (Figures 1 and 46). The resource consists of an asymmetric, rectangular plan with the principal facade facing south. Located on the south

## Architectural Survey

Horus Kentucky 1 Solar ■ Simpson Co., Kentucky

June 2021 ■ Terracon Project No. 7320P073



façade is a front gable projection located on the east side of the south façade. Centrally located on the south façade is a porch, covered by a shed roof supported by turned wooden porch supports. Flanking the front entry door to the west is a large 12 pane fixed window. Other windows on the house consist of non-historic one-over-one double hung sash windows. Located on the rear elevation is a large gabled two-bay garage sheathed in non-historic vinyl siding. Exterior materials on the original plan of the house consist of a poly-chromatic brick veneer and asphalt shingle roofing. Located within each gable is a small rectangular gable vent. Landscape features surrounding the resource consist of ornamental foundation plantings.

This resource no longer retains a majority of its original design and materials. Alterations have obscured its historic fabric. The resource has remained on its original site of construction, is still located in a rural setting, and evokes a late twentieth century rural residence feeling. Therefore, it has only retained integrity in location, setting, and feeling, but does not retain integrity in design, materials, or workmanship style.

In regard to the National Register Criteria for Evaluation (National Register Bulletin 15):

**Criterion A** – This resource has no association with significant events or periods in our history's past.

**Criterion B** – This resource has no known association with the lives of significant persons in our past.

**Criterion C** – This resource has been significantly altered and no longer conveys significance as a ca. 1970s cross gable ranch house.

**Criterion D** – This resource is unlikely to yield significant information about the history of Simpson County, Kentucky.

This property is not associated with significant events or periods in our history's past, has no known association with the lives of significant persons, no longer retains a majority of its character defining features, and no longer conveys significance as a ca. 1970s linear ranch house. Based on this evaluation, Resource No. SI 530 is recommended ineligible for inclusion in the NRHP.



---

**Figure 46. Resource No. SI 530, facing north.**

#### **4.25 Resource No. SI 531**

Resource No. SI 531 is a ca. 1950s linear ranch house located at [REDACTED], approximately 270 meters southeast of the project area (Figures 1, 47, and 48). The resource consists of an asymmetrical, rectangular plan with the principal façade facing southeast. Located on the southeast façade is a front entry door, flanked on the south by a non-historic Chicago Window. Other windows on the southeast façade consist of non-historic six-over-six double hung sash windows. The side elevations consist of two bays with non-historic six-over-six double hung sash windows. Exterior materials consist of a painted brick veneer siding and asphalt shingle roofing.

Two non-historic outbuildings are located to the north and west of the resource and consist of a prefabricated carport and a shed roof outbuilding with one-over-one windows and vinyl siding.

This resource no longer retains a majority of its original design and materials. Alterations have obscured its historic fabric, and it no longer exhibits a vernacular workmanship style. The resource has remained on its original site of construction, is still located in a rural setting, and evokes a mid-century rural residence feeling. Therefore, it has only retained integrity in location, setting, and feeling but does not retain integrity in design, materials, or workmanship style.

In regard to the National Register Criteria for Evaluation (National Register Bulletin 15):



**Architectural Survey**

Horus Kentucky 1 Solar ■ Simpson Co., Kentucky

June 2021 ■ Terracon Project No. 7320P073



**Criterion A** – This resource has no association with significant events or periods in our history's past.

**Criterion B** – This resource has no known association with the lives of significant persons in our past.

**Criterion C** – This resource has been significantly altered and no longer conveys significance as a ca. 1950s linear ranch house.

**Criterion D** – This resource is unlikely to yield significant information about the history of Simpson County, Kentucky.

This property is not associated with significant events or periods in our history's past, has no known association with the lives of significant persons, no longer retains a majority of its character defining features, and no longer conveys significance as a ca. 1950s linear ranch house. Based on this evaluation, Resource No. SI 531 is recommended ineligible for inclusion in the NRHP.



---

**Figure 47. Resource No. SI 531, facing west.**



Figure 48. Resource No. SI 531, facing southwest.

#### 4.26 Resource No. SI 532 – Briant Cemetery

Resource No. SI 532 is a ca. 1860–1910 rural cemetery located [REDACTED], approximately 260 meters southeast of the project area (Figures 1, 49, and 50). The resource consists of a small, rectangular cemetery containing approximately 25 burials. Grave markers in the cemetery consist of a variety of upright, die-in-socket, gothic, and cross-vault markers. Burials are oriented facing the east, and headstone materials consist of granite, limestone, and marble. The oldest marked grave in the cemetery dates to 1864. Landscape elements located within the cemetery consist of several large old growth cedar trees.

This cemetery retains a majority of its original design and materials, and retains a rural workmanship style. The resource has remained on its original site of construction, is still located in a rural setting, and evokes the feeling of a rural cemetery. Therefore, it has retained integrity in location, setting, feeling, design, materials, and workmanship style.

In regard to the National Register Criteria for Evaluation (National Register Bulletin 15):

**Criterion A** – This resource has no association with significant events or periods in our history's past.

## Architectural Survey

Horus Kentucky 1 Solar ■ Simpson Co., Kentucky

June 2021 ■ Terracon Project No. 7320P073



**Criterion B** – This resource has no known association with the lives of significant persons in our past

**Criterion C** – The Briant Cemetery embodies some characteristics of a mid to late nineteenth century rural cemetery through retention of its rural workmanship style along with its original materials and design.

**Criterion D** – Given that most of the cemetery dates to the late nineteenth and twentieth centuries, it is unlikely to yield significant information important in understanding the history of the area.

Cemeteries and graves do not qualify for NRHP listing unless they are associated with persons of exceptional significance (and is the only or best physical representation associated with that person); of outstanding age within its geographic and cultural context; feature distinctive design features; or were part of noteworthy historic events (Potter and Boland 1992, National Register Bulletin 41). The Briant Cemetery is not associated with a significant historic figure or event and is unlikely to yield information important to the history of the area. The Briant Cemetery does represent distinctive characteristics of a type, period, and method of construction; however, the cemetery is not the best example of a late nineteenth rural cemetery. For these reasons, Resource No. SI 532 – Briant Cemetery is recommended ineligible for inclusion in the NRHP.



Figure 49. Resource No. SI 532 - Briant Cemetery, facing southwest.





---

**Figure 50. Resource No. SI 532 – Briant Cemetery, facing northwest.**

#### **4.27 Resource No. SI 533**

Resource No. SI 533 is a ca. 1960s Colonial Revival house located at [REDACTED], approximately 380 meters southeast of the project area (Figures 1 and 51). The resource consists of a large two-story rectangular plan with the principal facade facing east. Located on the east façade is a central non-historic front door and handicap ramp with concrete lintel and key stone framing the entry. Flanking the front door are non-historic single nine-over-nine double hung sash windows with concrete keystones over vertical brick lintels. The original plan consists of a five-bay front façade and two-bay side elevations. Located on the south elevation is a two-story gabled addition with single non-historic nine-over-nine double hung sash windows. The addition houses a single bay garage on the first story, opening to the south.

This resource no longer retains a majority of its original design and materials. Alterations have obscured its historic fabric, consisting of replaced windows. The resource has remained on its original site of construction, is still located in a rural setting, and evokes a mid-century rural residence feeling. Therefore, it has only retained integrity in location, setting, and feeling, but does not retain integrity in design, materials, or workmanship style.

In regard to the National Register Criteria for Evaluation (National Register Bulletin 15):

## Architectural Survey

Horus Kentucky 1 Solar ■ Simpson Co., Kentucky

June 2021 ■ Terracon Project No. 7320P073



**Criterion A** – This resource has no association with significant events or periods in our history's past.

**Criterion B** – This resource has no known association with the lives of significant persons in our past.

**Criterion C** – This resource has been significantly altered and no longer conveys significance as a ca. 1960s Colonial Revival house.

**Criterion D** – This resource is unlikely to yield significant information about the history of Simpson County, Kentucky.

This property is not associated with significant events or periods in our history's past, has no known association with the lives of significant persons, no longer retains a majority of its character defining features, and no longer conveys significance as a ca. 1960s Colonial Revival house. Based on this evaluation, Resource No. SI 533 is recommended ineligible for inclusion in the NRHP.



Figure 51. Resource No. SI 533, facing northwest.

#### **4.28 Resource No. SI 535**

Resource No. SI 535 is a ca. 1950s front gabled bungalow house located at [REDACTED] Road, approximately 490 meters south of the project area (Figures 1 and 52). The resource consists of an asymmetrical, rectangular plan with the principal facade facing east. Located on the east facade is a partial veranda supported by synthetic Doric columns. Beneath the veranda is a front entry door, flanked on the north by a Chicago window. Other windows on the front facade consist of non-historic six-over-six double hung sash windows. Located on the north side of the east facade is an integral carport that has been enclosed with vinyl siding and paired six-over-six windows. The south elevation consists of two single non-historic six-over-six double hung sash windows on the first story and the addition of a window to the gable. Exterior materials have been significantly altered and consist of non-historic vinyl siding and pressed sheet metal roofing.

This resource no longer retains a majority of its original design and materials. Alterations have obscured its historic fabric consisting of replacement windows and the addition of vinyl siding. The resource has remained on its original site of construction, is still located in a rural setting, and evokes a mid-century rural residence feeling. Therefore, it has only retained integrity in location, setting, and feeling, but does not retain integrity in design, materials, or workmanship style.

In regard to the National Register Criteria for Evaluation (National Register Bulletin 15):

**Criterion A** – This resource has no association with significant events or periods in our history’s past.

**Criterion B** – This resource has no known association with the lives of significant persons in our past.

**Criterion C** – This resource has been significantly altered and no longer conveys significance as a ca. 1950s front gabled bungalow house.

**Criterion D** – This resource is unlikely to yield significant information about the history of Simpson County, Kentucky.

This property is not associated with significant events or periods in our history's past, has no known association with the lives of significant persons, no longer retains a majority of its character defining features, and no longer conveys significance as a ca. 1950s front gabled bungalow house. Based on this evaluation, Resource No. SI 535 is recommended ineligible for inclusion in the NRHP.





---

**Figure 52. Resource No. SI 535, facing west.**

#### **4.29 Resource No. SI 536 – Kitchens Cemetery**

Resource No. SI 536 – Kitchens Cemetery (Archeological Site No. 15Si64) is a ca. 1920s rural cemetery located off of [REDACTED], within the project boundary (Figures 1, 53, and 54). The resource consists of a small, rectangular, planned cemetery consisting of approximately 10 burials. Headstones located in the cemetery consist of upright and die-in-socket headstones facing the west. Headstone materials consist of marble. The cemetery is located within an agricultural field enclosed by a wire fence. Several small trees are located within the cemetery and it is severely overgrown. Some headstones may be obscured by vegetation.

This cemetery retains a majority of its original design and materials, and retains a rural workmanship style. The resource has remained on its original site of construction, is still located in a rural setting, and evokes the feeling of a rural cemetery. Therefore, it has retained integrity in location, setting, feeling, design, materials, and workmanship style.

In regard to the National Register Criteria for Evaluation (National Register Bulletin 15):

**Criterion A** – This resource has no association with significant events or periods in our history's past.

## Architectural Survey

Horus Kentucky 1 Solar ■ Simpson Co., Kentucky

June 2021 ■ Terracon Project No. 7320P073



**Criterion B** – This resource has no known association with the lives of significant persons in our past

**Criterion C** – The Kitchens Cemetery embodies some characteristics of a late nineteenth century rural cemetery through retention of its rural workmanship style, along with its original materials and design.

**Criterion D** – Given that the cemetery dates to twentieth century, it is unlikely to yield significant information important in understanding the history of the area.

Cemeteries and graves do not qualify for NRHP listing unless they are associated with persons of exceptional significance (and is the only or best physical representation associated with that person); of outstanding age within its geographic and cultural context; feature distinctive design features; or were part of noteworthy historic events (Potter and Boland 1992, National Register Bulletin 41). The Kitchens Cemetery is not associated with a significant historic figure or event and is unlikely to yield information important to the history of the area. The Kitchens Cemetery does represent distinctive characteristics of a type, period, and method of construction; however, the cemetery is not the best example of an early twentieth century rural cemetery. For these reasons, Resource No. SI 536 – Kitchens Cemetery is recommended ineligible for inclusion in the NRHP.



Figure 53. Resource No. SI 536, facing east.





---

Figure 54. Resource No. SI 536, facing east.

#### 4.30 Resource No. SI 537

Resource No. SI 537 is a nineteenth century railroad line located along the western boundary of the project area (Figures 1 and 55). The resource consists of two railroad tracks traveling north and south over a gravel bed. The railroad line appears in 1874, listed as the Louisville and Nashville Railroad (Figure 5). The line has been altered with the replacement of wooden railroad ties with modern concrete ties.

This resource retains a majority of its original design and materials and represents design characteristics of a mid-century residential structure. The resource has remained on its original site of construction, is still located in a rural setting, and evokes a nineteenth century transportation feeling. Therefore, it has retained integrity in design, materials, workmanship style, location, setting, and feeling.

In regard to the National Register Criteria for Evaluation (National Register Bulletin 15):

**Criterion A** – This resource has no association with significant events or periods in our history's past.



## Architectural Survey

Horus Kentucky 1 Solar ■ Simpson Co., Kentucky

June 2021 ■ Terracon Project No. 7320P073



**Criterion B** – This resource has no known association with the lives of significant persons in our past.

**Criterion C** – This resource does not represent a significant example of a nineteenth century railroad line.

**Criterion D** – This resource is unlikely to yield significant information about the history of Simpson County, Kentucky.

This property is not associated with significant events or periods in our history's past and has no known association with the lives of significant persons. Although it retains a majority of its character defining features, it does not represent a significant example of a nineteenth century railroad line. Based on this evaluation, Resource No. SI 537 is recommended ineligible for inclusion in the NRHP.



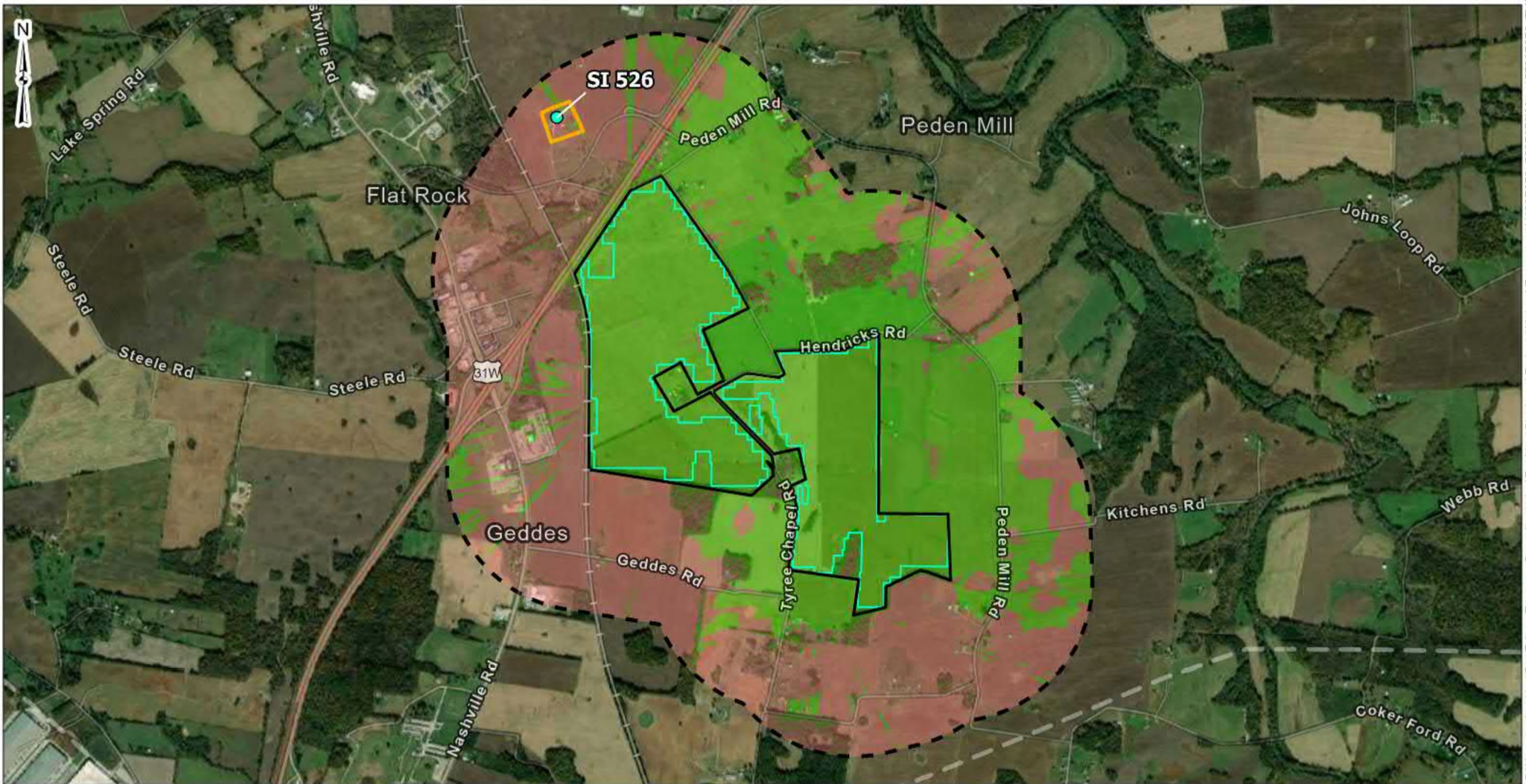
---

Figure 55. Resource No. SI 537, facing north.

## **5.0 CONCLUSIONS**

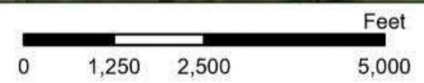
Terracon has completed an Architectural Survey of the proposed Horus Kentucky 1 Solar Site, located approximately 3.75 miles south of the town of Franklin in Simpson County, Kentucky. As a result of the survey, 26 historic resources were identified (Figure 1). These resources include 22 houses, two agricultural properties, and two cemeteries that range in age from ca. 1850 to ca. 2020. One resource, SI 526, was unable to be evaluated due to its distance from the right-of-way. Resource No. SI 526 is separated from the project area by I-65 and a wooded area, and the proposed solar farm will not be visible from this resource, as shown in a viewshed analysis conducted in January 2021 (Figure 56). An archaeological survey is also being conducted for the project, with results of that investigation being included in a separate report per Kentucky state guidelines (Gengenbach et al 2021).





- Project Site Boundary
- PV Panel Area
- APE (0.5-Mile Radius)
- SI 526 Boundary

- SI 526 House Location
- ### Viewshed Analysis
- Visible
  - Not Visible



DATA SOURCES:  
ESRI WMS - World Aerial Imagery, OpenStreetMap

Project No.:  
5720P073  
Date:  
Jun 2021  
Drawn By:  
MDP  
Reviewed By:  
WGG

611 Lunken Park Drive Cincinnati, OH 45226  
PH. (513) 321-5816 terracon.com

**Viewshed Analysis**

Horus Renewables  
TVA Hoffman Solar  
Tyree Chapel Road  
Simpson County, Kentucky

**Exhibit**

**A1**



## **6.0 REFERENCES CITED**

Adelman, Garry and Mary Bays Woodside

2010 A House Divided: Civil War Kentucky, American Battlefield Trust, Electronic Document, <https://www.battlefields.org/learn/articles/house-divided-civil-war-kentucky>, accessed March 1, 2021.

AgCo

2020 4020: Stiffened Bins, GSI, Electronic Document, <https://www.grainsystems.com/master/products/storage/grain-bins/4024.html>, accessed April 30, 2021.

City of Franklin Kentucky

2021 Welcome to Franklin. Electronic document, <http://www.franklinky.org/visitors>, accessed March 1, 2021.

Encyclopedia Britannica, Inc.

2021 Kentucky in the Early 20th Century. Electronic document, <http://www.britannica.com/EBchecked/topic/315026/Kentucky/279939/Kentucky-in-the-early-20th-century.htm>, accessed August 20, 2018.

Gengenbach, Barbara, Mills Dorn, William Green

2021 *Phase I Archaeological Survey of Approximately 530 Acres at the Horus Kentucky 1 Solar Site and Approximately 7 Miles of TVA Transmission Line*. Report prepared for Horus Renewables Corp., West Sacramento, California, by Terracon Consultants, Inc., Columbia, South Carolina.

Kentucky Department of Fish and Wildlife Resources

2014 West Fork of Drakes Creek, Electronic document, <https://fw.ky.gov/Education/Pages/West-Fork-of-Drakes-Creek.aspx>, accessed March 2, 2021.

McBride, Kim A., and W. Stephen McBride

1996 From Colonization to the Twentieth Century. In *Kentucky Archaeology*, edited by Barry Lewis, pp. 183-212. University of Kentucky Press.

McBride, W. Stephen, and Kim A. McBride

2008 Chapter 8: Historic Period. In *the Archaeology of Kentucky: An Update Volume One*, edited by David Pollack, pp. 109-192. State Historic Preservation Comprehensive Plan Report No. 3, Kentucky Heritage Council, Frankfurt, Kentucky.

## **Architectural Survey**

Horus Kentucky 1 Solar ■ Simpson Co., Kentucky  
June 2021 ■ Terracon Project No. 7320P073



Moody, Tom

2021 The Founding of Franklin and Simpson County. Electronic document,  
<https://sites.rootsweb.com/~kyschs/pages/history.htm>, accessed March 1, 2021.

Talbott, Tim

2021 Explore Simpson County, Kentucky, Electronic document, <https://explorekyhistory.ky.gov/tours/show/52>, accessed March 1, 2021.

United States Department of Agriculture

1975 History of CCC Bin Storage Program 1933 – 1975, Agriculture Stabilization and  
Conservation Service, Washington, D.C.