

**COMMONWEALTH OF KENTUCKY
BEFORE THE KENTUCKY STATE BOARD
ON ELECTRIC GENERATION AND TRANSMISSION SITING**

**In the Matter of the Application of Horus Kentucky 1)
LLC for a Construction Certificate to Construct a) Case No. 2020-00417
Merchant Electric Generating Facility)**

**RESPONSE OF HORUS KENTUCKY 1 LLC TO THE SITING BOARD
CONSULTANT'S SITE ASSESSMENT REPORT AND INCORPORATED
VERIFICATION**

I, Braden Houston, Managing Director of Solar Development for OPDEnergy, state that I am authorized to make this Response on behalf of the Horus Kentucky 1 LLC. In response to the Siting Board Consultant's Site Assessment Report, Horus Kentucky 1 LLC states as follows:

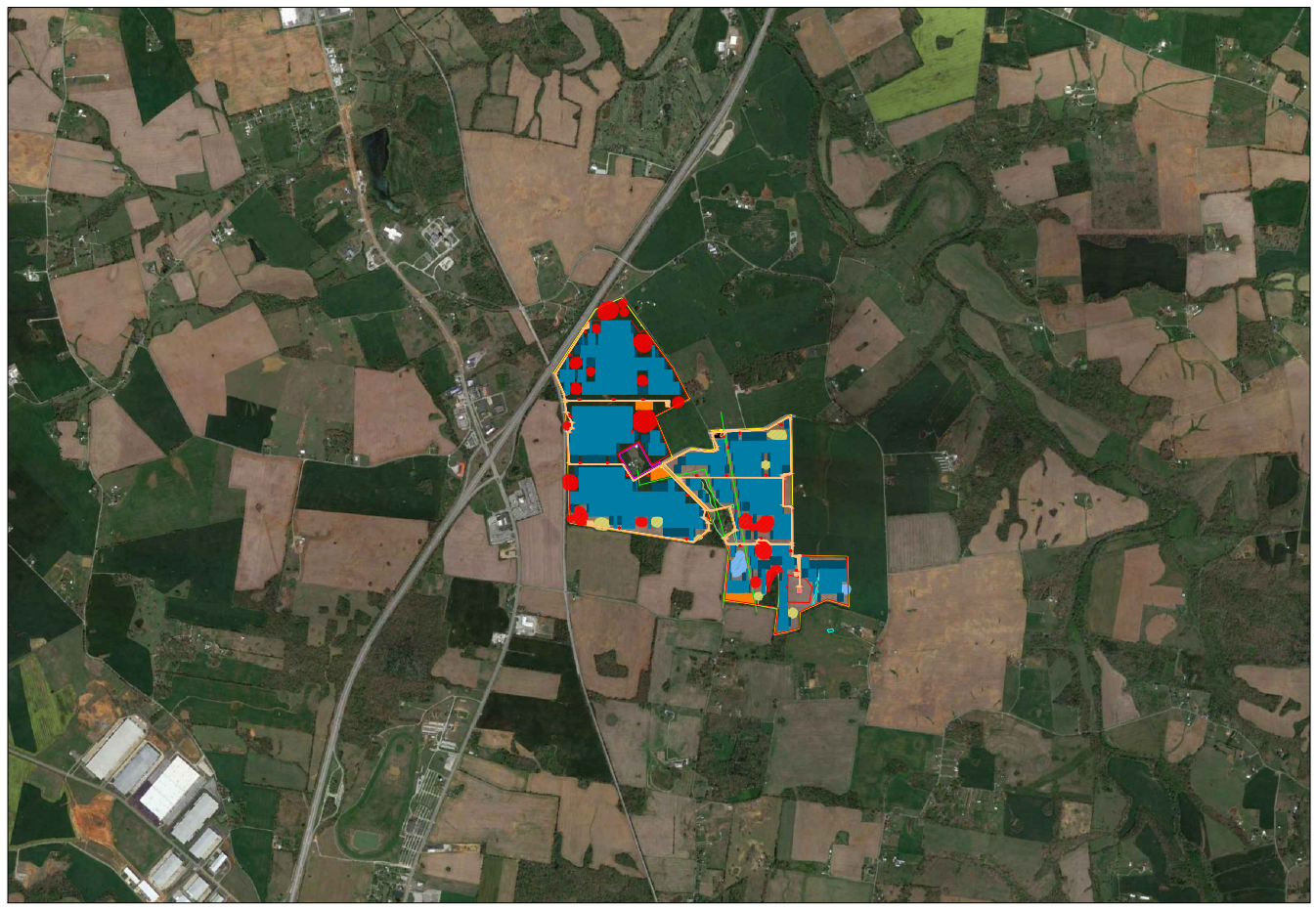
1. Horus Kentucky 1 LLC has attached an updated Site Plan to this Response consistent with the county setback requirements for the Siting Board's consideration as recommended within the Siting Board Consultant's Site Assessment Report.

2. Horus Kentucky 1 LLC is continuing work closely with County officials to develop a mutually favorable detailed Development Plan for the Franklin-Simpson County Planning and Zoning Board to consider and approve as required as a condition of the previously granted conditional use permits. The final Development Plan will conform with the requirements set forth within 9.8 of the Franklin-Simpson County Zoning Regulations.

Executed this 28th day of October 2021.



Braden Houston



SCALE: 1"=5000'-0"

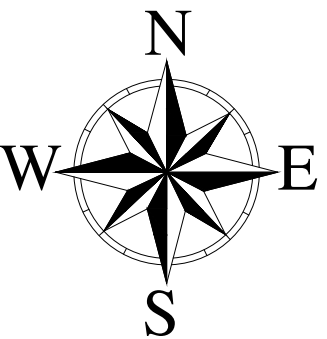
SYSTEM SPECIFICATIONS			
MAX NET EXPORT CAPABILITY AT POI	69,300 kW _{ac}	TOTAL MODULES	168,224
POWER AC (NAMEPLATE CAPACITY)	74,360 kW _{ac}	MOD PER STRING	28
POWER DC	89,999 kW _{dc}	N° STRINGS	6,008
MODULE POWER	535 Wp	N° INVERTERS	22
INVERTER CAPACITY DC/AC	3,380 kW / 1,299	MODULE TEC.	Bifacial
		PITCH	24.61 Ft

SITE DETAILS	
LATITUDE	36°40'6.65"N
LONGITUDE	86°32'37.86"W
PARCEL BOUNDARY AREA	547.6 acres
PV PLANT AREA	501.2 acres

PULL-OFF STRUCTURE LOCATION	
LATITUDE	36°40'1.94"N
LONGITUDE	86°32'15.24"W

Legend:

- HV LINE
- FENCED AREA
- PARCEL BOUNDARY
- ROADS
- EXCLUDED ZONES
- CEMETERY
- SUBSTATION
- LAYDOWN AREA
- FOREST
- WETLANDS
- AVOIDANCE AREA: HIGH RISK AREA
- AVOIDANCE AREA: MEDIUM RISK AREA
- AVOIDANCE AREA: LOWER RISK AREA
- ACCESS ROADS
- INVERTER
- MAIN ACCESS



GENERAL NOTES

- THE LOCATION OF PROPOSED EQUIPMENT INCLUDING BUT NOT LIMITED TO: FENCING, SOLAR ARRAY RACKING, ELECTRICAL EQUIPMENT, OVERHEAD PDL'S AND LINES, ETC. SHOWN ARE APPROXIMATE AND MAY BE SUBJECT TO MODIFICATION DUE TO SITE CONDITIONS, ADDITIONAL PERMITTING REQUIREMENTS, EQUIPMENT SPECIFICATIONS AND/OR OTHER CONSTRAINTS.
- PROPERTY BOUNDARIES, TOPOGRAPHIC DATA, AND EXISTING IMPROVEMENTS SHOWN ARE APPROXIMATE PER AERIAL PHOTOGRAPHY AND GIS MAPS.
- THIS PLAN IS PRELIMINARY AND WILL NOT BE RELEASED FOR CONSTRUCTION.
- 16' WIDE ROAD.
- INVERTER ACCESS ADJACENT TO EXISTING ROADS.
- OFFICIAL SITE SURVEY IS NOT AVAILABLE. PULL-OFF STRUCTURE LOCATION IS ESTIMATE.
- SUBSTATION GATES ALLOW FOR ENTRANCE FROM EAST AND EXIT FROM NORTH OF A 50FT TRUCK.

THIS DRAWING OR BILL OF MATERIAL IS CONFIDENTIAL AND MAY NOT BE LOANED, REPRODUCED OR COPIED, EITHER WHOLLY OR IN PART, OR MADE PUBLIC IN ANY MANNER WITHOUT THE WRITTEN CONSENT OF ASSET ENGINEERING.

REV	DATE	DESCRIPTION	DRN	CKD	APPD	REV	DATE	DESCRIPTION	DRN	CKD	APPD	REV	DATE	DESCRIPTION	DRN	CKD	APPD

PROJECT: OPDENERGY -- PVF FRANKLIN

LOCATION: FRANKLIN, KENTUCKY

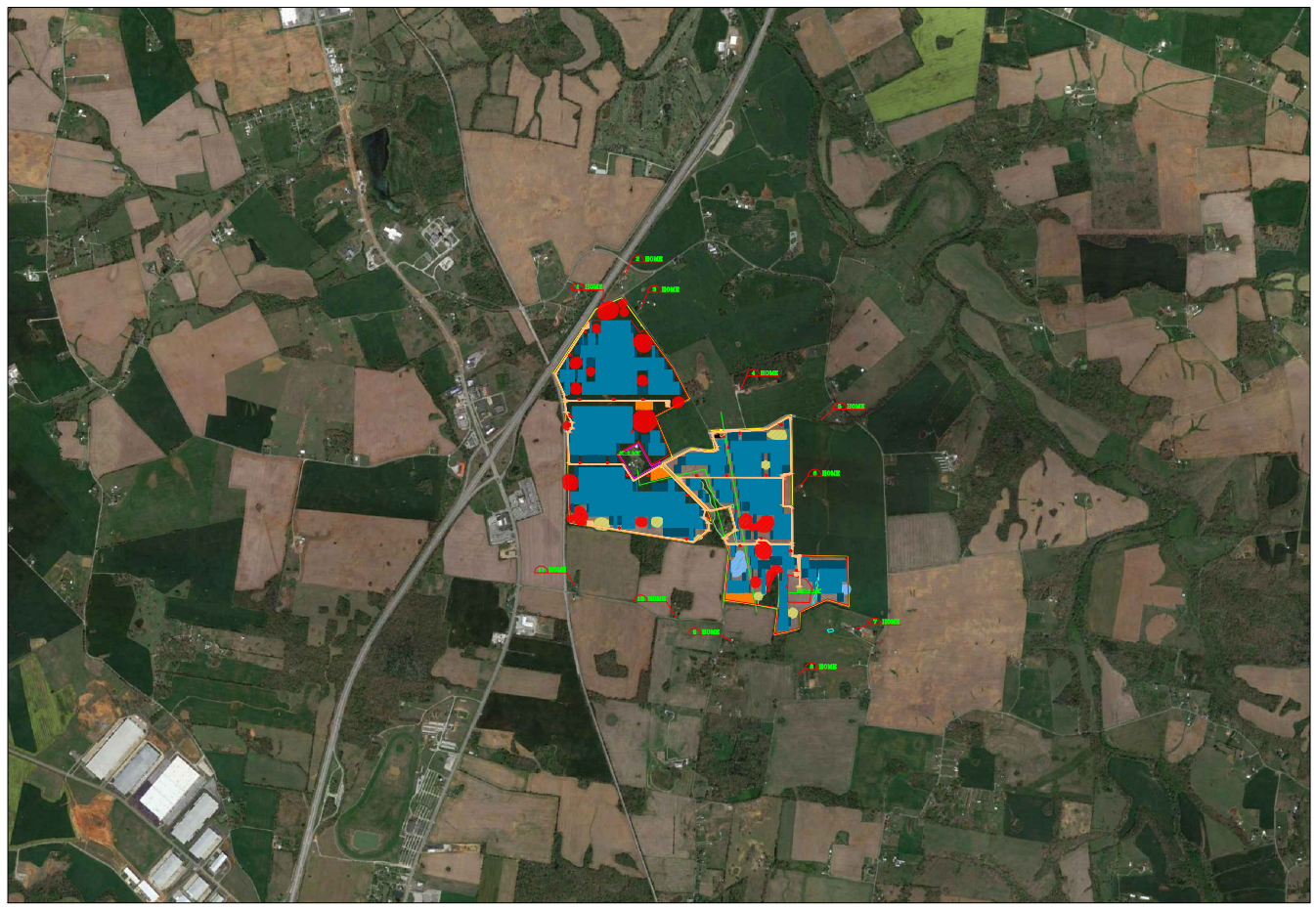
TITLE: SITE PLAN LAYOUT

DATE: 04/10/2021 SCALE: 1"=500'-0" DRAWN BY: CHECKED BY: APPROVED BY:

JOB NUMBER

DRAWING NUMBER

SP01

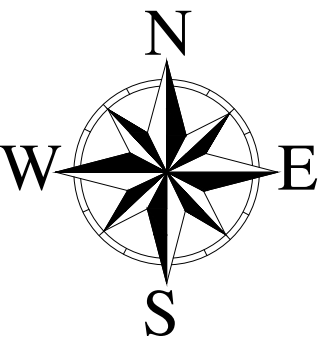


SCALE: 1"=5000'-0"

LIST OF DISTANCES			
RESIDENTIAL PROPERTY	LATITUDE	LONGITUDE	DISTANCE TO THE PROJECT
1	36°40'32.26"N	86°32'49.24"W	500 Ft
2	36°40'38.26"N	86°32'42.49"W	330 Ft
3	36°40'30.62"N	86°32'38.35"W	250 Ft
4	36°40'11.42"N	86°32'6.63"W	850 Ft
5	36°40'4.72"N	86°31'45.53"W	640 Ft
6	36°39'48.36"N	86°31'51.93"W	250 Ft
7	36°39'14.58"N	86°31'34.29"W	350 Ft
8	36°39'4.33"N	86°31'51.93"W	1000 Ft
9	36°39'12.46"N	86°32'10.77"W	850 Ft
10	36°39'19.19"N	86°32'27.26"W	975 Ft
11	36°39'28.67"N	86°32'55.60"W	1082 Ft

Legend:

- HV LINE
- ▨ FOREST
- FENCED AREA
- ▨ WETLANDS
- PARCEL BOUNDARY
- ▨ AVOIDANCE AREA: HIGH RISK AREA
- ROADS
- ▨ AVOIDANCE AREA: MEDIUM RISK AREA
- EXCLUDED ZONES
- ▨ AVOIDANCE AREA: LOWER RISK AREA
- CEMETERY
- ▨ ACCESS ROADS
- SUBSTATION
- INVERTER
- ▨ LAYDOWN AREA
- SITE ENTRANCE



GENERAL NOTES

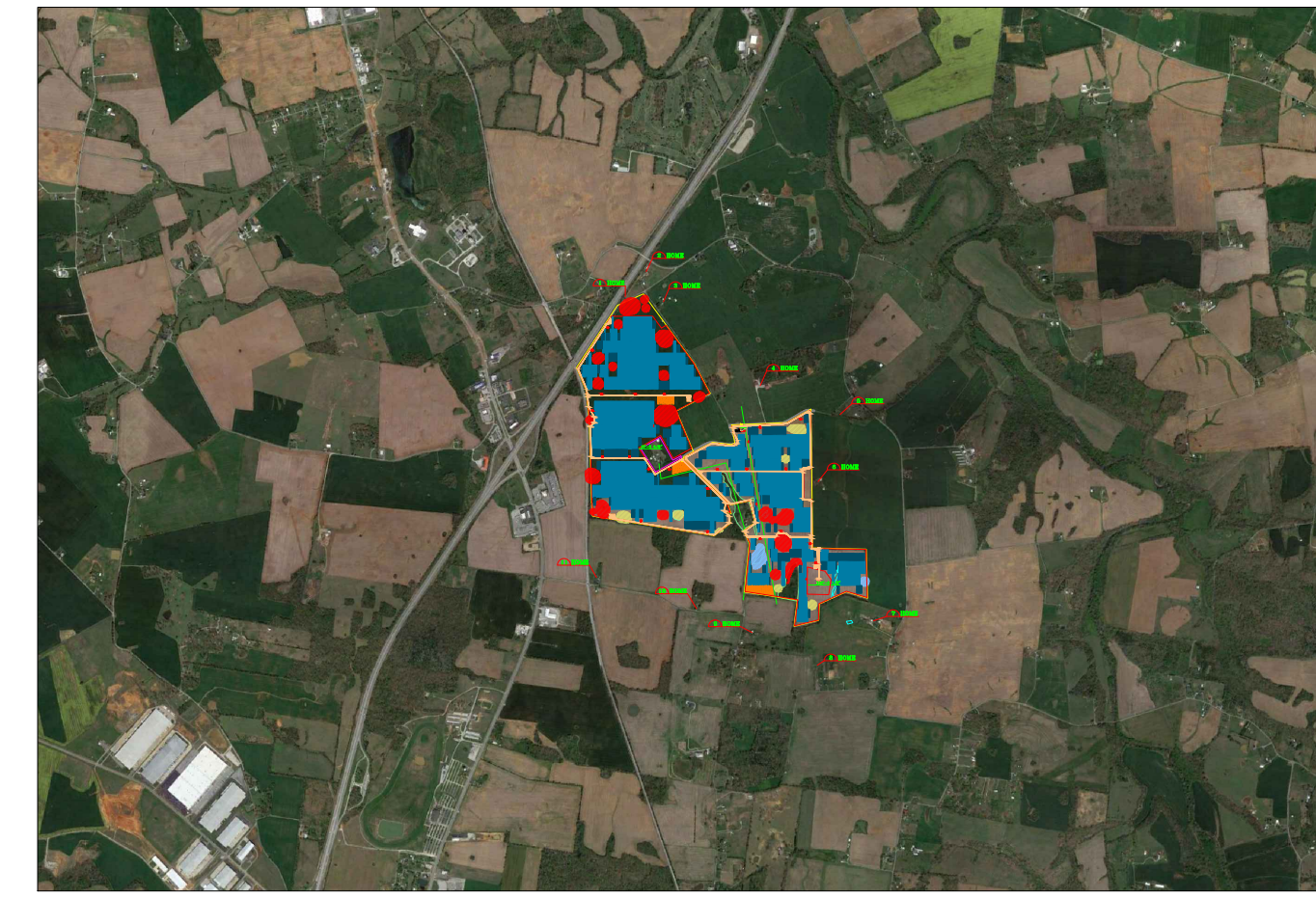
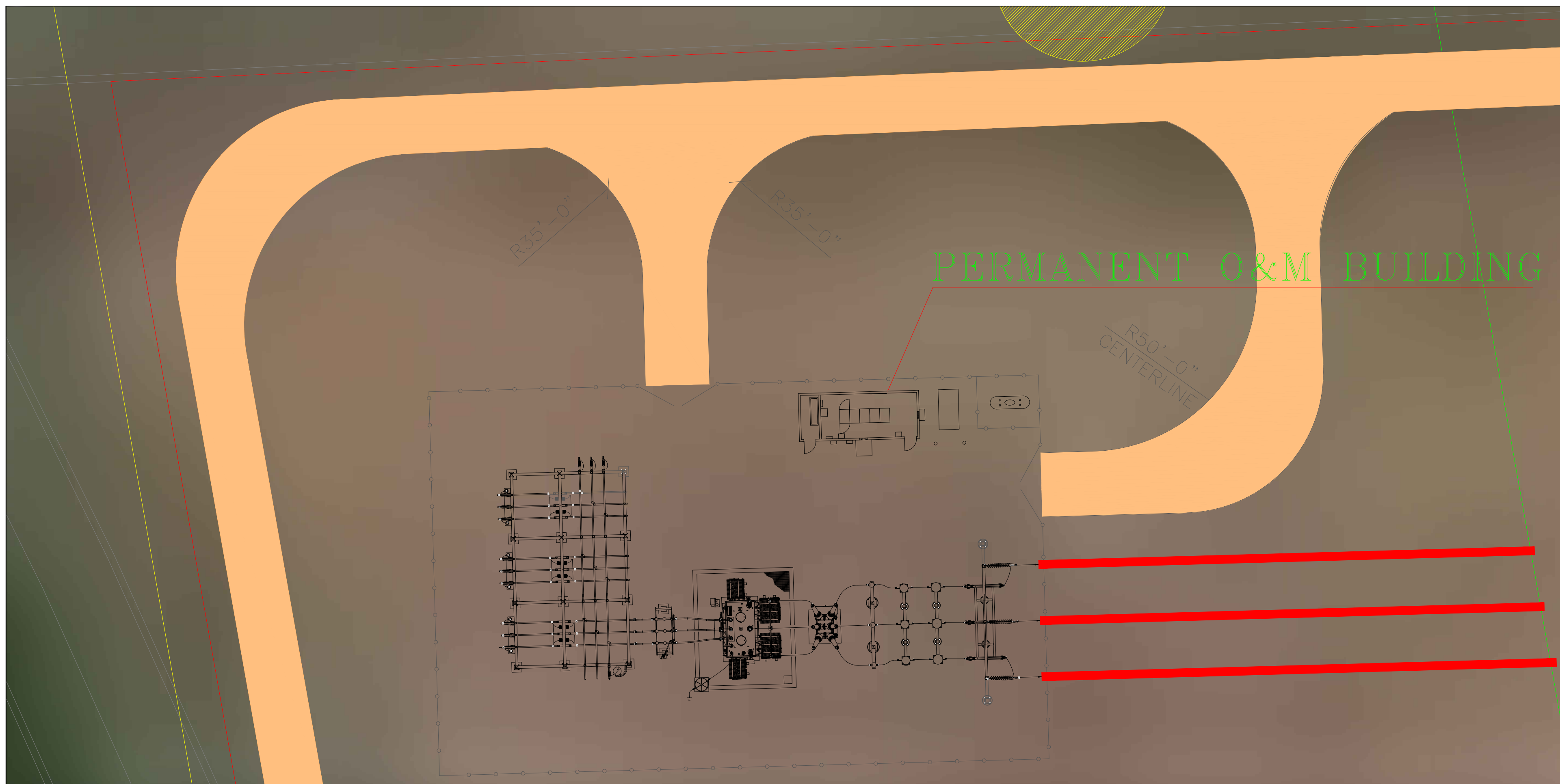
1. THE LOCATION OF PROPOSED EQUIPMENT INCLUDING BUT NOT LIMITED TO: FENCING, SOLAR ARRAY RACKING, ELECTRICAL EQUIPMENT, OVERHEAD PDL'S AND LINES, ETC. SHOWN ARE APPROXIMATE AND MAY BE SUBJECT TO MODIFICATION DUE TO SITE CONDITIONS, ADDITIONAL PERMITTING REQUIREMENTS, EQUIPMENT SPECIFICATIONS AND/OR OTHER CONSTRAINTS.
2. PROPERTY BOUNDARIES, TOPOGRAPHIC DATA, AND EXISTING IMPROVEMENTS SHOWN ARE APPROXIMATE PER AERIAL PHOTOGRAPHY AND GIS MAPS.
3. THIS PLAN IS PRELIMINARY AND WILL NOT BE RELEASED FOR CONSTRUCTION.
4. 16' WIDE ROAD.
5. INVERTER ACCESS ADJACENT TO EXISTING ROADS.
6. OFFICIAL SITE SURVEY IS NOT AVAILABLE. PULL-OFF STRUCTURE LOCATION IS ESTIMATE.
7. SUBSTATION GATES ALLOW FOR ENTRANCE FROM EAST AND EXIT FROM NORTH OF A 50FT TRUCK.

THIS DRAWING OR BILL OF MATERIAL IS CONFIDENTIAL AND MAY NOT BE LOANED, REPRODUCED OR COPIED, EITHER WHOLLY OR IN PART, OR MADE PUBLIC IN ANY MANNER WITHOUT THE WRITTEN CONSENT OF ASSET ENGINEERING.

REV	DATE	DESCRIPTION	DRN	CKD	APPD	REV	DATE	DESCRIPTION	DRN	CKD	APPD	REV	DATE	DESCRIPTION	DRN	CKD	APPD



PROJECT	OPDENERGY -- PVF FRANKLIN			JOB NUMBER	
LOCATION	FRANKLIN, KENTUCKY			DRAWING NUMBER	SP02
TITLE	RESIDENTIAL PROPERTY LAYOUT			DATE	04/10/2021
SCALE	1"=500'-0"			DRN BY	
CHECKED BY				APPROVED BY	

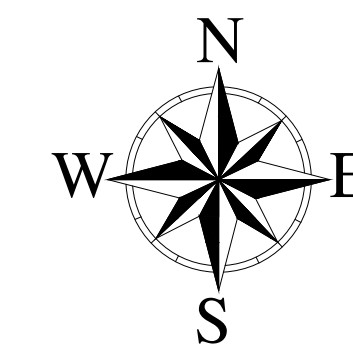
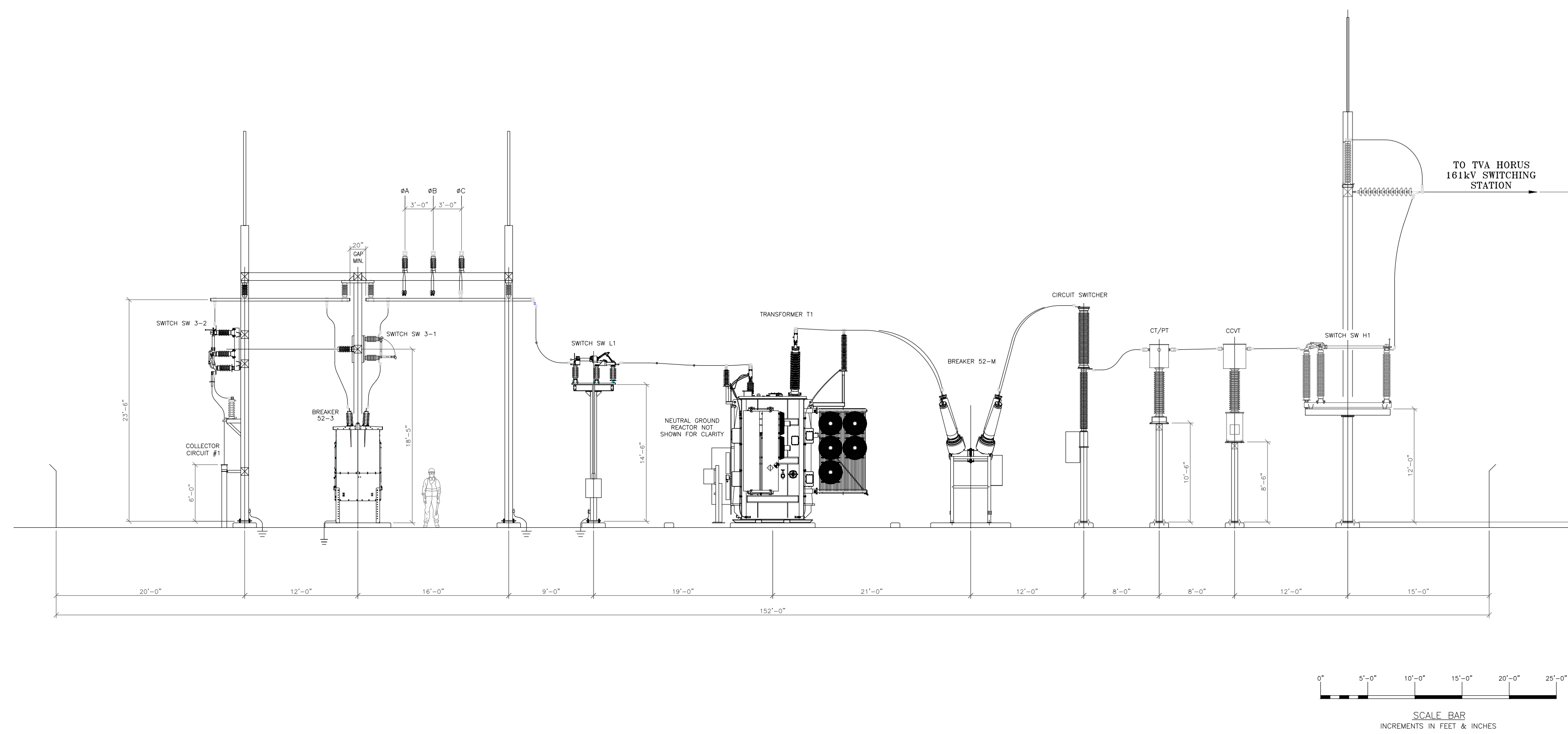


SCALE: 1"=5000'-0"

SYSTEM SPECIFICATIONS			
MAX NET EXPORT CAPABILITY AT POI	69,300 kW _{ac}	TOTAL MODULES	168,224
POWER AC (NAMEPLATE CAPACITY)	74,360 kW _{ac}	MOD PER STRING	28
POWER DC	89,999 kW _{dc}	N° STRINGS	6,008
MODULE POWER	535 Wp	N° INVERTERS	22
INVERTER CAPACITY DC/AC	3,380 kW / 1,299	MODULE TEC.	Bifacial
		PITCH	24.61 Ft

SITE DETAILS	
LATITUDE	36°40'6.65"N
LONGITUDE	86°32'37.86"W
PARCEL BOUNDARY AREA	547.6 acres
PV PLANT AREA	501.2 acres

PULL-OFF STRUCTURE LOCATION	
LATITUDE	36°40'1.94"N
LONGITUDE	86°32'15.24"W



GENERAL NOTES

- THE LOCATION OF PROPOSED EQUIPMENT INCLUDING BUT NOT LIMITED TO: FENCING, SOLAR ARRAY RACKING, ELECTRICAL EQUIPMENT, OVERHEAD PDLES AND LINES, ETC. SHOWN ARE APPROXIMATE AND MAY BE SUBJECT TO MODIFICATION DUE TO SITE CONDITIONS, ADDITIONAL PERMITTING REQUIREMENTS, EQUIPMENT SPECIFICATIONS AND/OR OTHER CONSTRAINTS.
- PROPERTY BOUNDARIES, TOPOGRAPHIC DATA, AND EXISTING IMPROVEMENTS SHOWN ARE APPROXIMATE PER AERIAL PHOTOGRAPHY AND GIS MAPS.
- THIS PLAN IS PRELIMINARY AND WILL NOT BE RELEASED FOR CONSTRUCTION.
- 16' WIDE ROAD.
- INVERTER ACCESS ADJACENT TO EXISTING ROADS.
- OFFICIAL SITE SURVEY IS NOT AVAILABLE. PULL-OFF STRUCTURE LOCATION IS ESTIMATE.
- SUBSTATION GATES ALLOW FOR ENTRANCE FROM EAST AND EXIT FROM NORTH OF A 50FT TRUCK.

THIS DRAWING OR BILL OF MATERIAL IS CONFIDENTIAL AND MAY NOT BE LOANED, REPRODUCED OR COPIED, EITHER WHOLLY OR IN PART, OR MADE PUBLIC IN ANY MANNER WITHOUT THE WRITTEN CONSENT OF ASSET ENGINEERING.																	
REV	DATE	DESCRIPTION	DRN	CKD	APPD	REV	DATE	DESCRIPTION	DRN	CKD	APPD	REV	DATE	DESCRIPTION	DRN	CKD	APPD



PROJECT	OPDENERGY -- PVF FRANKLIN							JOB NUMBER	
LOCATION	FRANKLIN, KENTUCKY							DRAWING NUMBER	
TITLE	SUBSTATION LAYOUT AND SECTION VIEW								
DATE	09/30/21	SCALE	1"=47"	DRN BY	CHECKED BY	APPROVED BY			

SP03