

COMMONWEALTH OF KENTUCKY
BEFORE THE PUBLIC SERVICE COMMISSION

In the Matter of:

The Application of)	
Kentucky Frontier Gas, LLC)	Case No.
for Approval of Financing)	2020-00400

APPLICATION

Kentucky Frontier Gas, LLC (Kentucky Frontier), by counsel, petitions the Commission for an order approving the assumption of debt for the financing of three trucks as required by KRS 278.300.

1. Kentucky Frontier Gas, LLC is a Colorado company in good standing authorized to do business in Kentucky. It was organized in Kentucky on August 25, 2005. A copy of its articles of organization was filed in Case No. 2005-00348. Frontier attests that it is in good standing to operate and transact business in Kentucky.

2. Kentucky Frontier is a natural gas utility as defined by KRS 278.010(3). Its owner and managing member is Steven Shute.

Its Prestonsburg office address is:

2963 KY Rt. 321
P. O. Box 408
Prestonsburg, KY 41653
Phone (606) 886-2431
Fax (606) 889-9196
www.kyfrontiergas.com
steve@kyfrontiergas.com

3. A description of the original cost of Frontier's property is in the PSC Annual Report, incorporated by reference.

4. The proceeds of the financing will be used for the acquisition of three new service trucks. The approximate total cost of the three vehicles is expected to \$100,000.00. Terms and conditions of the purchases are stated in exhibit1. Frontier will finance through Toyota or Community Trust Bank, depending on the most favorable terms available at the time of closing. The terms and conditions are time sensitive and may vary at the time of closing of the purchases. The financing is for 60 months at approximately 1.9% interest. No amortization schedule or interest rate is available until the loan is approved.

Frontier will take the best financing package available at the time of purchase. Financing might be through Toyota Financial Services or directly through the dealer and a local bank. Several auto loans have been purchased from auto dealers by Frontier's primary financier Community Trust. The finance packages offered by auto manufacturers vary by model and change almost weekly as do the terms offered by banks.

Frontier is a small company and cannot risk making an open-ended commitment to a dealer before the PSC approves a purchase. The specifics of which truck is purchased, the sale price, the amount financed, the lender, the APR and monthly payments etc. are all unknowable, due to the uncertainty of when or even whether the PSC will give approval.

5. The proceeds of the financing are not being used to refund any outstanding obligations.

6. Kentucky Frontier is an LLC and has no stock. There is no preferred stock issued. No stock is to be issued in conjunction with this financing.

7. No other debt is to be issued

8. There are no trust deeds.

9. The current mortgages, notes and other debt are listed in exhibit 2. Mortgages were previously filed in Case Nos. 2005-00348; 2005-00426; 20008-00394; 2009-00492; 2010-00076; 2012-00099; and 2015-00299.

10. No dividends have been paid by Kentucky Frontier in the last five years.

11. A balance sheet and income statement are included in exhibit 3.

12. The USoA account is 392 – motor truck.

13. 807 KAR 5:001: Section 18 (1) (c) – If Bonds or Notes or Other

Indebtedness is proposed requires:

(1) If Bonds or Notes or Other Indebtedness is proposed: Full description of all terms; Interest rates(s); whether the debt is to be secured and if so a description of how it is to be secured.

(2) 807 KAR 5:001: Section 18 (1) (e) - If proceeds will be used to acquire, construct, improve, or extend property, provide a detailed description and all contracts

The terms and interest rate for the proposed notes to finance three trucks cannot be known until the loans are executed. The notes cannot be executed until Frontier has received approval to incur the debt as required by KRS 278.300.

The proposed terms were included in exhibit 1 of the application. Frontier cannot obtain the final terms and interest rate unless and until it executes the notes.

Toyota does not have a sales contract that is contingent on third party approval.

The purchase contract is final when signed. Toyota is offering 1.9% interest rate. This rate is subject to change at the time the loans are signed. Because Frontier cannot execute the notes prior to Commission approval, it cannot provide the information requested.

14. These trucks replace three existing 2013 and 2015 trucks with mileage in excess of 150,000 miles, all of which require extensive maintenance.

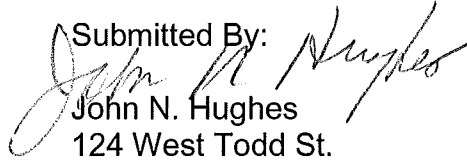
15. The contracts for the purchase of the trucks cannot be provided until executed. The final sales documents will not be available until Frontier is authorized to incur the debt associated with the purchase of the trucks. Frontier will submit the final documents when the sales are finalized.

16. If the information provided is inadequate to meet the requirements of the regulations, Frontier requests a deviation from 807 KAR 5:001(18)(1) (c) and (e) pursuant to 807 KAR 5:001(22).

17. Based on this information, the Applicant believes the financing is in the public interest, for a lawful purpose, is necessary for the proper performance of the utility to serve its customers and is reasonably necessary as required by KRS 278.300. Frontier was granted approval for similar loans in Case No. 2019-00379.

For these reasons, Kentucky Frontier requests that the Commission issue an order approving the financing of approximately \$100,000.00 and any other approvals necessary to complete the transactions related to the financing of the vehicles.

Submitted By:



John N. Hughes

124 West Todd St.

Frankfort, KY 40601

502 227 7270

jnhughes@johnnhughespsc.com

Attorney for

Kentucky Frontier Gas, LLC

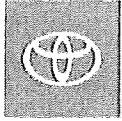
DECLARATION OF STEVEN SHUTE

I, Steven Shute, am a Member of Kentucky Frontier Gas, LLC, the Applicant in the referenced matter. I have read the application and I have full authority to sign this declaration. The facts set forth therein are true and correct to the best of my knowledge, information and belief. Pursuant to KRS 523.020-040, I certify under penalty of false swearing that the foregoing is true and correct.

Dated this 11th day of December 2020.

A handwritten signature in black ink, appearing to read "Steven Shute", is written over a horizontal line. The signature is stylized and somewhat cursive.

Steven Shute, Member,
Kentucky Frontier Gas, LLC



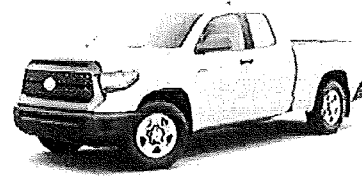
TOYOTA

Mann Toyota
 1811 U.S. Highway 23 North
 Prestonsburg KY 41653
 606-886-3861

2021 Tundra-SR

4x4-Tundra Double Cab SR 5.7L V8 6.5-Ft. Bed

Model: 8342A
 VIN: 5TFUY5F14MX966906
 Engine: 5.7L-V8 Engine
 Transmission: 6-Speed-automatic transmission



EXTERIOR
 Super-White

INTERIOR
 Graphite-Vinyl

PRICE

Vehicle Base Model	\$36,725.00
Total Installed Packages & Accessories	\$1,701.00
Delivery Processing and Handling	\$1,595.00
Total MSRP*	\$40,021.00

FUEL-ECONOMY



INSTALLED PACKAGES & ACCESSORIES

50-State Emissions	\$0.00
SR-Work Truck Package	-\$275.00
SR-Work Truck Package—adds durable vinyl seating and flooring, and removes wireless door lock feature.	
All-Weather-Floor Liners & Door Sill Protectors	\$239.00
All-Weather-Floor Liners, Door Sill Protectors.	
Door-Edge Guards	\$140.00
Helps prevent door edge dings and chipped paint with this protective finishing touch. Thermoplastic-coated stainless steel is precisely matched to the exterior finish. Compression-fitted to door edge contours. Blend seamlessly to complement exterior styling.	
Preferred-Owner's Portfolio	\$0.00
Spray-On-Bedliner	\$579.00
Get the spray-on bedliner that's as tough and durable as your Tundra. Protect your bed from damage with this permanently bonded fixture. Toyota quality standards assure uniform thickness and a consistent texture. Textured surface is designed to prevent cargo from sliding. No lost cargo space, minimal added weight. Features a Tundra logo. Proprietary application method helps create a straight and crisp edge. Fully warranted; repairs completed quickly and easily at a Toyota dealership.	
Predator-Steps	\$749.00
A highly functional and stylish upgrade for your truck, the predator tube step complements the Tundra's rugged design and improves access to the cab. Black powder-coated finish. Drop steps for easy access. Durable, 6061 aluminum construction is chip- and rust-resistant.	

Remote-Tailgate Lock

\$269.00

Lock your tailgate the fast and easy way with your existing key fob. This Genuine Toyota Accessory will give you an added peace of mind when locking and unlocking your truck. Using your existing key fob you can lock/unlock your tailgate conveniently with one click. Designed to help prevent tailgate theft. Fully integrates with the Toyota factory key fob so there is no need for an additional remote. Automatically locks/unlocks tailgate with door locks so there are no extra steps. Extensive testing ensures power tailgate lock meets and exceeds Toyota's stringent standards.

Total Optional Equipment

\$1,701.00

Vehicle Base Model

\$36,725.00

Delivery Processing and Handling

\$1,595.00

FEATURES

Tundra

Mechanical & Performance

- Engine:-5.7-liter Aluminum I-FORCE V8 with DOHC 32-Valve cylinder heads with Acoustic Control Induction System (ACIS), Dual Independent Variable Valve Timing with Intelligence (VVT-i) and 4-2-1 tubular stainless steel exhaust manifold; 381 hp @ 5600 rpm; 401 lb.-ft. @ 3600 rpm
- Ignition-system: Heavy-duty battery and heavy-duty alternator
- Emission-rating: Low Emission Vehicle II (LEV-II)
- Drivetrain:-4WDemand part-time 4WD with electronically controlled transfer case, Active Traction Control (A-TRAC) and Automatic Limited-Slip Differential (Auto LSD)
- Steering:-Hydraulic power rack-and-pinion
- Ignition-system: Electronic, with Toyota Direct Ignition (TDI)
- Exhaust-system: Standard stainless steel exhaust system
- Transmission:-6-speed Electronically Controlled automatic Transmission with intelligence (ECT-i), sequential shift mode and uphill/downhill shift logic (5.7L V8 models add TOW/HAUL Mode)
- Suspension:-Independent coil-spring high-mounted double-wishbone front suspension with stabilizer bar and low-pressure nitrogen gas-filled shock absorbers; live axle with trapezoidal multi-leaf rear suspension with staggered outboard-mounted low-pressure nitrogen gas-filled shock absorbers
- Brakes:-Power-assisted ventilated 13.9-in. front disc brakes with opposed 4-piston brake calipers; ventilated 13.6-in. rear disc brakes, and Star Safety System™

Exterior

- Halogen-headlights with LED accent lights, with manual level control and auto on/off feature
- Taillights-and stop lights with dual vortex generators
- Two-speed-windshield wipers
- High-Solar Energy-Absorbing (HSFA) glass
- Front-and rear mudguards
- Chrome-"5.7L I-FORCE V8" engine badge (driver and front passenger door)
- Black-outside door handles
- 6.5-ft.-Standard Bed
- Deck-rail and tailgate caps
- Black-heated power outside mirrors
- Windshield-wiper de-icer
- Easy-lower and lift tailgate
- Front-tow hooks
- Chrome-4x4 badge (lower-left portion of tailgate)
- Black-roof-mounted antenna

Interior

- Air-conditioning with dust and pollen air filter and single temperature setting for driver and front passenger
- 6-passenger-seating capacity
- 60/40-split fold-up rear seats
- Urethane-tilt 4-spoke steering wheel with column shifter, Multi-Information Display (MID), Bluetooth® hands-free phone, voice command, Dynamic Radar Cruise Control (DRCC), and Lane Departure Alert (LDA) controls
- Power-door locks with shift-linked automatic lock/unlock feature
- Day/night-rearview mirror
- Two-front 12V auxiliary power outlets; one rear 12V auxiliary power outlet
- Front-and rear cup and bottle holders (quantity varies by model, package and grade)
- Integrated-backup camera
- Fabric-trimmed-40/20/40 split fold-down front bench seat; 4-way adjustable driver's seat; 4-way adjustable front passenger seat
- Carpet-flooring (not available with Work Truck Package)
- Power-windows with driver's-side one-touch auto down
- Remote-keyless entry system with lock, unlock and panic functions (not available with Work Truck Package)
- Fixed-rear window
- Front-and rear maplights
- Audio—includes-six speakers, 7-in. touchscreen, AM/FM, Android Auto™ & Apple CarPlay® & Amazon Alexa compatible, SiriusXM® with 3-month All Access trial, USB media port, two USB charge ports, hands-free phone capability, advanced voice recognition and music streaming via Bluetooth® wireless technology. Connected Services—Safety Connect® with 1-year trial, Wi-Fi Connect with up to 2 GB within 3-month trial. See toyota.com/audio-multimedia for details.

Safety & Convenience

- Toyota-Safety Sense™ P (TSS-P) —Pre-Collision System with Pedestrian Detection (PCS w/PD), Lane Departure Alert (LDA)
- Star-Safety System™—Includes Vehicle Stability Control (VSC), Traction Control (TRAC), Anti-lock Brake System (ABS) with

- Automatic High Beams (AHB) and Dynamic Radar Cruise Control (DRCC)
- Eight-airbags
- Driver-and front outboard passenger seat-mounted side airbags, driver and front passenger knee airbags, and front and rear Roll-sensing Side Curtain Airbags (RSCA)
- Driver-and front passenger seatbelt pretensioners with force limiters
- Child-protector-rear door locks
- Trailer-Sway-Control (TSC)
- Anti-theft-system with engine immobilizer

- Electronic Brake-force Distribution (EBD), Brake Assist (BA) and Smart Stop Technology¹ (SST)
- Driver-and front outboard passenger Advanced Airbag System
- 3-point-seatbelts for all seating positions; driver-side Emergency Locking Retractor (ELR) and Automatic/Emergency Locking Retractor (ALR/ELR) on all passenger seatbelts
- LATCH-(Lower Anchors and Tethers for Children) includes lower anchors on outboard rear seats and tether anchor on rear center seat
- Tire-Pressure Monitor System (TPMS)
- Integrated-Trailer Brake Controller with Multi-Information Display (MID) monitoring screen and trailer brake type, gain and manual trailer brake output controls (5.7L V8 only)
- (www.toyota.com/toyota-care.html)- featuring a no cost maintenance plan with roadside assistance

¹2021 Manufacturer's Suggested Retail Price, excludes the Delivery, Processing and Handling Fee, taxes, license, title and available or regionally required equipment. Actual Dealer price may vary. Pricing, fuel economy, specification, standard features and available equipment are based on information available when this page was produced and subject to change without notice.

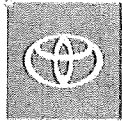
Disclaimer: This document is only representative of some of the information contained on an actual window sticker, and is not meant to replace or substitute for the actual window sticker on the vehicle. Please see your retailer for further information.

Created Date: December 4, 2020

Tundra
If we can get this one!

\$36,883
2660.¹³ ← TAX & LIC

\$39,543.¹³
ON THE ROAD



TOYOTA

Mann Toyota
 1811 U.S. Highway 23 North
 Prestonsburg KY 41653
 606-886-3861

2021 Tacoma-SR

SR-4x4 Access Cab V6 Engine 6-Speed
 Automatic Transmission 6-Ft. Bed



Model: 7552A
 VIN: 3TYSZ5AN9MT50A451
 Engine: 3.5L-V6 Engine
 Transmission: 6-Speed-Automatic Transmission

EXTERIOR
 Super-White

INTERIOR
 SR-Fabric In Cement Gray

PRICE

Vehicle Base Model	\$31,875.00
Total Installed Packages & Accessories	\$1,816.00
Delivery Processing and Handling	\$1,175.00
Total MSRP*	\$34,866.00

FUEL ECONOMY



INSTALLED PACKAGES & ACCESSORIES

50-State Emissions	\$0.00
SX-Package	\$840.00
SX-Package: black 16-in. alloy wheels, overfenders, mirror caps, door handles and headlight bezels.	
All-Weather-Floor Liners and Door Sill Protectors	\$248.00
All-Weather-Floor Liners, Door Sill Protectors.	
Bed-Lighting Kit	\$149.00
Why-go fumbling in the dark when you don't have to? The bed lighting kit will effectively light up your truck bed so you can actually see what you're loading and unloading. High-performance LED truck bed lighting helps improve cargo management at night or in dark locations. Two separate light assemblies each including six LEDs—on the inside bed walls and near the rear of the cargo area—provide excellent light distribution while loading and unloading. Precise placement angles illuminate toward important cargo locations. Constructed of high-quality, durable materials.	
Door-Edge Guards	\$110.00
Help-prevent door edge dings and chipped paint with this protective finishing touch. Thermoplastic-coated stainless steel is precisely matched to the exterior finish. Compression-fitted to door edge contours. Blend seamlessly to complement exterior styling.	
Preferred-Owner's Portfolio	\$0.00
5-In.-Oval Tube Steps - Black	\$469.00
Whether-or not your truck is lifted, you might need a step up. Tube steps ease entry into the cab while complementing Tacoma's good looks. 5-in. oval tube steps provide dual-molded and skid-resistant heavy-duty step pads on both sides of the vehicle to help channel water off the step. Durable, lightweight aluminum construction is chio and rust resistant; choice of chrome-plated or black powder-coat finish. Meets all Toyota-required load, cyclic and durability testing.	
Total Optional Equipment	\$1,816.00
Vehicle Base Model	\$31,875.00

FEATURES

Tacoma

Mechanical & Performance

- Engine:-3.5-Liter V6 Direct-Injection Atkinson Cycle Engine with 278 hp @ 6000 rpm/265 lb.-ft. @ 4600 rpm
- Emission-Rating: Low Emission Vehicle III (LEV-III)
- Drivetrain:-4WDemand part-time 4WD with electronically controlled transfer case and Automatic Limited-Slip Differential (Auto LSD)
- Body-Construction: One-piece frame rails with eight cross members and fully boxed front sub-frame
- Steering:-Variable-assist power rack-and-pinion steering
- Engine:-3.5-Liter V6 DOHC 24-Valve Direct-Injection Atkinson Cycle Engine with VVT-iW (Variable Valve Timing-intelligent Wider Intake) and VVT-i (Variable Valve Timing-intelligent Exhaust), with 278 hp @ 6000 rpm/265 lb.-ft. @ 4600 rpm (Bore x Stroke: 94.0 x 83.0 mm; Compression Ratio: 11.8)
- Transmission:-6-speed Electronically Controlled automatic Transmission with Intelligence (ECT-I)
- Off-road:-Hill Start Assist Control (HAC)
- Suspension:-Coil-spring double-wishbone front suspension and stabilizer bar; leaf spring rear suspension with staggered outboard-mounted gas shock absorbers and stabilizer bar
- Brakes:-Power-assisted ventilated front disc brakes; rear drum brakes with tandem booster and Star Safety System™

Exterior

- 6-ft.-Standard Bed
- Dark-gray grille with black surround, color-keyed heated power outside mirrors, color-keyed door handles and rear bumper
- Deck-rail system with four adjustable tie-down cleats and four fixed cargo bed tie-down points
- Variable-intermittent and mist windshield wiper
- Skid-plate(s): on engine/front suspension
- Projector-beam-headlights with turn Daytime Running Lights (DRL)
- Fiber-reinforced-Sheet-Molded Composite (SMC) inner bed with steel outer panels, storage compartments and rail caps, with easy lower, lockable and removable tailgate
- 16-in.-styled steel wheels with P245/75R16 tires
- Sliding-rear glass with privacy glass
- Integrated-color-keyed tailgate spoiler

Interior

- Analog-instrumentation with speedometer, tachometer, coolant temperature and fuel gauges; 4.2-in. color Multi-Information Display (MID) with outside temperature, odometer, tripmeters and average fuel economy
- Three-total USB ports: one USB media port, two USB charge ports
- Fabric-trimmed-seats; 4-way adjustable driver's seat with lumbar support; 4-way adjustable front passenger seat
- Remote-keyless entry system with lock, unlock and panic functions
- Audio—includes-7-in. touchscreen, six speakers, Android Auto™ & Apple CarPlay® & Amazon Alexa compatible, hands-free phone capability and music streaming via Bluetooth® wireless technology, SiriusXM® with 3-month All Access trial subscription. See toyota.com/audio-multimedia for details. Connected Services—Safety Connect® with 1-year trial, Wi-Fi Connect with up to 2 GB within 3-month trial. See toyota.com/connected-services for details.
- Front-dual zone automatic climate control with air filter and individual temperature settings for driver and front passenger
- Manual-day/night rearview mirror
- Urethane-lit/telescopic steering wheel with audio controls
- Power-windows and door locks

Safety & Convenience

- Star-Safety System™—includes Vehicle Stability Control (VSC), Traction Control (TRAC), Anti-lock Brake System (ABS) with Electronic Brake-force Distribution (EBD), Brake Assist (BA) and Smart Stop Technology® (SST)
- Driver-and front passenger Advanced Airbag System
- Driver-and front passenger active headrests
- Tire-Pressure Monitor System (TPMS)
- Engine-immobilizer
- Toyota-Safety Sense™ P (TSS-P) —includes Pre-Collision System with Pedestrian Detection (PCS w/PD), Lane Departure Alert (LDA), Automatic High Beams (AHB) and Dynamic Radar Cruise Control (DRCC)
- Driver-and front passenger seat-mounted side airbags, driver and front passenger knee airbags and front and rear Roll-sensing Side Curtain Airbags (RSCA)
- LATCH-(Lower Anchors and Tethers for CHildren) includes lower anchors for front passenger seats on Access Cab and outboard rear seats on Double Cab
- Class-IV-towing hitch receiver, ATF cooler (not available on manual transmission), engine oil cooler, power steering cooler, 130-amp alternator, 4- and 7-pin connector with converter, and Trailer-Sway Control (TSC) (V6 only)
- ToyotaCare- featuring a complimentary maintenance plan with

Roadside Assistance

*2021 Manufacturer's Suggested Retail Price, excludes the Delivery, Processing and Handling Fee, taxes, license, title and available or regionally required equipment. Actual Dealer price may vary. Pricing, fuel economy, specification, standard features and available equipment are based on information available when this page was produced and subject to change without notice.

Disclaimer: This document is only representative of some of the information contained on an actual window sticker, and is not meant to replace or substitute for the actual window sticker on the vehicle. Please see your retailer for further information.

Created Date: December 4, 2020

TACOMA

IF we can get this exact one
By JAN 4th!

#32,745
2379 38 ← Tax & Lic

#35,124.38
ON THE ROAD

Form M: Customer Debt Schedule

Customer Name: Kentucky Frontier Gas, LLC

Date: 12/11/2020

Lender	Loan Type ¹	Commitment/Loan Balance	Interest Rate	Fixed/Variable	Payment Frequency ²	Scheduled Payment Amount ³
CTB-SBA#2	T	\$ 129,300.92	5.00%	V	Monthly	\$ 1,888.40
CTB-SBA#3	T	\$ 1,153,736.76	5.00%	V	Monthly	\$ 13,175.96
CTB-USDA #1	T	\$ 615,519.82	6%	V	Monthly	\$ 13,272.60
CTB-USDA #2	T	\$ 68,389.17	6%	V	Monthly	\$ 1,474.71
CTB-2020 Tacoma ACAB/SR5	T	\$ 29,770.10	4.73%	F	Monthly	\$ 654.10
CTB-2020 Tacoma Access Cab	T	\$ 29,737.39	4.73%	F	Monthly	\$ 653.38
CTB-2016 Tacoma	T	\$ 1,123.51	2.99%	F	Monthly	\$ 376.53
CTB-2017 Tacoma	T	\$ 6,820.78	2.99%	F	Monthly	\$ 496.43
CTB-2018 Chevy 2500	T	\$ 19,198.91	4.25%	F	Monthly	\$ 654.92
Vermeer Vactron Hydro Excavator	T	\$ 34,206.00	5.25%	F	Monthly	\$ 750.97
TOYOTA FINANCIAL-19 Tacoma	T	\$ 15,170.95	3.90%	F	Monthly	\$ 387.36
TOYOTA FINANCIAL-19 Tundra	T	\$ 26,726.05	0.90%	F	Monthly	\$ 646.70
CTB-2018 Chevy 2500	T	\$ 30,708.55	4.25%	F	Monthly	\$ 615.49

TOTALS **\$ 2,160,408.91** **\$ 35,047.55**

1. Enter one of the following choices:

- T-Term Loan
- L-Line of Credit
- D-Demand

2. Enter monthly, quarterly, annually, etc.

3. Enter N/A for demand notes, lines of credit, and floor plans.

Kentucky Frontier Gas, LLC
Profit & Loss YTD Comparison
 October 2020

	<u>Oct 20</u>	<u>Jan - Oct 20</u>
Income		
405 · Management Fee Income		
405.1 · Management Fee Income - Auxier	12,596.65	364,501.24
405.3 · Management Fee Income- DLR	10,000.00	10,000.00
Total 405 · Management Fee Income	22,596.65	374,501.24
419 · Interest Income	1.67	103.30
480 · Residential Sales	53,057.93	1,108,691.58
481 · Commercial & Industrial Sales	17,620.34	376,386.59
482 · Commercial Tax Exempt	6,157.58	317,057.51
487 · Penalties & Forfeited Discounts	470.53	20,320.84
488 · Miscellaneous Service Revenues		
488.11 · Reconnection Fee	576.00	2,718.00
488.12 · Transfer Fee	210.00	2,790.00
488.14 · Damaged Meter Fee	0.00	100.00
488.3 · Reimbursed Expenses - Income	0.00	443.00
488.4 · Service Charges	400.00	4,550.00
488.6 · Relocate Meter Chg	150.00	1,485.00
488.7 · NSF	0.00	300.00
488.8 · Connection Fee	1,150.00	4,775.00
Total 488 · Miscellaneous Service Revenues	2,486.00	17,161.00
489 · Sales Tax Commission	24.49	327.90
490 · Other Income	0.00	48,572.44
491 · Customer Charge	57,350.90	578,111.17
496 · Non taxable Income	0.00	170,300.00
Total Income	159,766.09	3,011,533.57
Cost of Goods Sold		
800 · Gas Supply Expenses		
804 · Natural Gas Purchases & Transp		
804.1 · Gas Purch - Quality	6,016.57	115,260.77
804.10 · Gas Purch-Hi Energy Gas	3,660.13	24,399.38
804.11 · Gas Purch - Jefferson Gas	19,971.68	428,586.56
804.12 · Gas Purch - Nytis Exploration	405.27	16,191.46
804.13 · Gas Purch - HTC Gas Company	1,051.59	13,836.21
804.14 · Gas Purch - Interstate Natural	0.00	-213.87
804.15 · Transportation Expense-DLR	42,673.00	42,673.00
804.16 · Southern Energy, LLC	0.00	189,654.74
804.17 · Gas Purch - Spirit Energy	981.11	12,047.85
804.18 · Alternative Capital Partners	2,188.88	13,255.67
804.2 · Gas Purch - Columbia	2,924.98	54,505.53
804.24 · Gas Purch-Diversified Energy	0.00	4,191.30
804.3 · Gas Purch - KLC	0.00	21,066.46
804.5 · Gas Purch - Slone Energy	0.00	2,505.83
804.6 · Gas Purch - Tackett & Sons	0.00	16,176.60
804.9 · Gas Purch - Magnum Drilling	1,543.50	19,481.70

Kentucky Frontier Gas, LLC
Profit & Loss YTD Comparison
 October 2020

	<u>Oct 20</u>	<u>Jan - Oct 20</u>
Total 804 · Natural Gas Purchases & Transp	81,416.71	973,619.19
Total 800 · Gas Supply Expenses	81,416.71	973,619.19
Total COGS	81,416.71	973,619.19
Gross Profit	78,349.38	2,037,914.38
Expense		
408 · Taxes Other Than Income Taxes		
408.3 · Property Tax	1,572.42	9,872.21
408.4 · Annual PSC Assessment	0.00	7,328.46
408.8 · NET PROFITS RET-CITY OF JACKSON	0.00	796.91
408 · Taxes Other Than Income Taxes - Other	0.00	0.00
Total 408 · Taxes Other Than Income Taxes	1,572.42	17,997.58
409 · Income Taxes		
409.4 · KY NONRESIDENT INCOME TAX WH	0.00	2,280.00
Total 409 · Income Taxes	0.00	2,280.00
427 · Interest on Long-Term Debt		
427.12 · Int Exp- CTB SBA #3	5,600.00	44,387.45
427.13 · Int Exp-2016 Tacoma Access	11.53	148.72
427.15 · Int Exp-CTB (2017 Tacoma)	32.17	373.29
427.16 · INT EXP- 2018 CHEVY 2500 HD	89.44	977.49
427.17 · INT EXP-2019 TACOMA	61.36	592.24
427.18 · INT EXP-2019 TUNDRA	25.70	242.30
427.2 · Interest on USDA Loan #1	0.00	0.00
427.21 · Int Exp-CTB 20 TACOMA ACCESS	119.38	1,143.42
427.23 · Int Exp-CTB 20 Tacoma ACAB/SR5	117.10	1,142.90
427.24 · Int Exp-CTB on Vermeer Hydro Ex	156.64	1,485.67
427.25 · Interest Exp-2018 Chevy (Auto)	120.49	609.45
427.3 · Interest on USDA Loan #2	359.11	3,775.86
427.8 · Interest on SBA Loan #2	544.90	4,692.79
Total 427 · Interest on Long-Term Debt	7,237.82	59,571.58
768 · Contract Labor	390.00	1,560.00
806 · Gas Purch-Aei Kaars	0.00	7,148.60
809 · Gas Purch-Cumberland Valley	0.00	0.00
849 · TRANSMISSION EXPENSES		
861 · MAINTENANCE		
867 · Maint of Other Equipment	215.35	2,338.64
Total 861 · MAINTENANCE	215.35	2,338.64
Total 849 · TRANSMISSION EXPENSES	215.35	2,338.64
870 · DISTRIBUTION EXPENSES		
871 · DISTRIBUTION OPERATION		
874 · Mains & Services Expenses	1,319.20	21,047.96
878 · Meter & House Regulator Exp		
878.2 · Uniforms	0.00	338.16
Total 878 · Meter & House Regulator Exp	0.00	338.16
880 · Other Expenses		

Kentucky Frontier Gas, LLC Profit & Loss YTD Comparison October 2020

	<u>Oct 20</u>	<u>Jan - Oct 20</u>
880.10 · DIMP Program	0.00	359.45
880.11 · PSC 811 Fines	0.00	35,000.00
880.3 · Drug Testing	154.70	419.27
880.4 · Licenses & Permits	0.00	4,919.59
880.5 · Travel for Members	256.55	354.43
880.6 · Training	0.00	6,488.35
880.8 · Easements	0.00	394.75
Total 880 · Other Expenses	<u>411.25</u>	<u>47,935.84</u>
Total 871 · DISTRIBUTION OPERATION	<u>1,730.45</u>	<u>69,321.96</u>
884 · DISTRIBUTION MAINTENANCE		
893 · Maint of Meters & House Reg	0.00	8,384.66
894 · Maint of Other Equipment	443.07	6,203.18
Total 884 · DISTRIBUTION MAINTENANCE	<u>443.07</u>	<u>14,587.84</u>
Total 870 · DISTRIBUTION EXPENSES	<u>2,173.52</u>	<u>83,909.80</u>
900 · CUSTOMER ACCOUNTS EXPENSES		
900.1 · CUSTOMER ACCT OPERATION		
905 · Misc Customer Accounts Exp		
905.2 · Postage and Delivery	1,475.61	19,529.19
905.3 · Printing and Reproduction	454.73	4,579.31
Total 905 · Misc Customer Accounts Exp	<u>1,930.34</u>	<u>24,108.50</u>
Total 900.1 · CUSTOMER ACCT OPERATION	<u>1,930.34</u>	<u>24,108.50</u>
Total 900 · CUSTOMER ACCOUNTS EXPENSES	<u>1,930.34</u>	<u>24,108.50</u>
906 · CUSTOMER SERVICE & INFORMATION		
906.1 · C S & I OPERATION		
909 · Inform & Instruc Advert Exp		
909.1 · Web Support	187.29	2,249.78
909.2 · Public Awareness Exp	1,997.34	1,997.34
Total 909 · Inform & Instruc Advert Exp	<u>2,184.63</u>	<u>4,247.12</u>
910 · Misc Cust Serv & Infor Exp	504.50	504.50
Total 906.1 · C S & I OPERATION	<u>2,689.13</u>	<u>4,751.62</u>
Total 906 · CUSTOMER SERVICE & INFORMATION	<u>2,689.13</u>	<u>4,751.62</u>
918 · ADMINISTRATIVE & GENERAL EXP		
919 · ADMIN & GEN OPERATION		
920 · Admin & General Salaries		
920.2 · Payroll Administration Expenses	675.19	4,944.86
Total 920 · Admin & General Salaries	<u>675.19</u>	<u>4,944.86</u>
921 · Office Supplies and Expenses		
921.11 · Travel	57.53	8,642.59
921.12 · Credit Cd Charges	1,733.60	20,724.13
921.2 · Office Supplies & Expense	937.13	18,704.57
921.3 · Bank Service Charges	10.00	135.00
921.4 · Computer Software	3,572.56	35,758.03
921.7 · Dues and Subscriptions	12.46	430.54
921.8 · Telephone and Fax	3,360.72	31,827.98

Kentucky Frontier Gas, LLC
Profit & Loss YTD Comparison
 October 2020

	<u>Oct 20</u>	<u>Jan - Oct 20</u>
921.9 · Utilities	679.88	7,273.40
921 · Office Supplies and Expenses - Other	0.00	201.93
Total 921 · Office Supplies and Expenses	10,363.88	123,698.17
923 · Outside Services Employed		
923.2 · Outside Services - Accounting	0.00	4,313.15
923.3 · Outside Services - Engineering	2,555.28	38,289.16
923.4 · Outside Services - Legal	0.00	227.50
923.6 · Outside Serv-Go Hire Employment	0.00	4,176.72
Total 923 · Outside Services Employed	2,555.28	47,006.53
924 · Insurance		
924.1 · Auto Insurance	0.00	36,414.56
924.3 · Life Insurance	0.00	2,207.80
924.4 · Property Insurance	0.00	4,816.00
924.5 · Worker's Compensation	0.00	24,411.66
Total 924 · Insurance	0.00	67,850.02
926 · Employee Pensions & Benefits	11,544.51	107,012.54
930.2 · Miscellaneous General Expenses	118.30	915.59
931 · Rents	2,730.00	27,300.00
Total 919 · ADMIN & GEN OPERATION	27,987.16	378,727.71
Total 918 · ADMINISTRATIVE & GENERAL EXP	27,987.16	378,727.71
932 · MAINTENANCE OF GENERAL PLANT		
932.0 · Maint of General Plant - Garage	0.00	344.07
932.1 · Repairs		
Building Repairs	0.00	328.97
Equipment Repairs		
Transportation Equipment	1,674.03	9,487.05
Equipment Repairs - Other	0.00	7,242.92
Total Equipment Repairs	1,674.03	16,729.97
Total 932.1 · Repairs	1,674.03	17,058.94
932.2 · Depreciation Expense	250,000.00	250,000.00
932.3 · Tools & Equipment	0.00	5,952.74
932.4 · Transportalon Equipment Fuel	3,180.32	30,753.17
Total 932 · MAINTENANCE OF GENERAL PLANT	254,854.35	304,108.92
981 · Interest Expense-Meter Deposit	20.47	120.44
990 · PAYROLL		
Employer CO State Unemployment	0.00	264.20
991 · Employee Wages	48,197.26	548,208.66
992 · Employer Social Security	3,070.08	34,879.34
993 · Employer Medicare	718.05	8,157.66
994 · Employer FUTA	0.00	797.96
995 · Employer KY State Unemployment	33.60	2,847.54
996 · Garnishment	120.00	1,320.00
Total 990 · PAYROLL	52,138.99	596,475.36
Total Expense	351,209.55	1,483,098.75

Kentucky Frontier Gas, LLC
Profit & Loss YTD Comparison
October 2020

	<u>Oct 20</u>	<u>Jan - Oct 20</u>
Net Income	<u>-272,860.17</u>	<u>554,815.63</u>