

SCALE:	DESIGNED BY:	1"=50'	ARR	REVISION:	BY:	DATE:
DRAWN BY:	WBD	ARR	ARR	ARR	ARR	ARR
CHECKED BY:	ARR	ARR	ARR	ARR	ARR	ARR
PROJECT NO.:	19016	ARR	ARR	ARR	ARR	ARR
DATE:	AUGUST 2020	ARR	ARR	ARR	ARR	ARR
CAD DWG ID:	JOB 19016 SANITARY SEWER	ARR	ARR	ARR	ARR	ARR

McCREARY COUNTY
WATER DISTRICT
 456 N. HWY 27
 WHITLEY CITY, KENTUCKY 42653

PLAN
SANITARY SEWER COLLECTION SYSTEM EXPANSION
PHASE ONE - CONTRACT No. 39

SHEET NUMBER:
35

ECLIPSE ENGINEERS, PLLC
 113 WEST MT. VERNON STREET
 SOMERSET, KENTUCKY 40501
 PHONE: 606-451-0959

Alan R. Robinson
 STATE OF KENTUCKY
 1-16-20
 ALAN R. ROBINSON
 23,414
 LICENSED PROFESSIONAL ENGINEER



FSA, USDA, NAIP, DGI

NOTE: NEAR STA 40+00 CONTRACTOR SHALL CONNECT EX 3" FM TO PROPOSED 4" FM AND ABANDONED EX 3" FM.

LOCKHART LARRY & KATHERINE
 PO BOX 506
 STEARNS KY 42647

STEARNS PROPERTIES LLC
 PO BOX 425
 STEARNS KY 42647

MCCOY JANE CLARK
 PO BOX 203
 STEARNS KY 42647

STEARNS CEMETERY
 STEARNS KY 42647

STEARNS PROPERTIES LLC
 PO BOX 425
 STEARNS KY 42647

NO INFO

MATCH LINE REV 1
 STA 33+82

MATCH LINE REV 1
 STA 46+07



CORDLELL RUTH T - TRUST
PO BOX 517
STEARNS KY 42647

GENTRY JOE & GERALDINE
206 HWY 741
STEARNS KY 42647

RIDNER JULIE
PO BOX 414
STEARNS KY 42647

NEAL JUANITA & TAYLOR INEZ
10433 MICHAEL DR
FLORENCE KY 41042

GENTRY JOE & GERALDINE
206 HWY 741
STEARNS KY 42647

COLLINS JEREMY - ESTATE
PO BOX 21
STRUNK KY 42649

KING DANNY D.
244 S MAIN ST
PARKER CITY IN 47340

LEWIS JOYCE
PO BOX 88
STEARNS KY 42647

PHILLIPS RAY & FRED A
278 HWY 741
STEARNS KY 42647

HILL RICHARD & ROSE
PO BOX 444
PINE KNOT KY 42635

PHILLIPS RAY & FRED A
278 HWY 741
STEARNS KY 42647

KING CARL B JR
296 HWY 741
STEARNS KY 42647

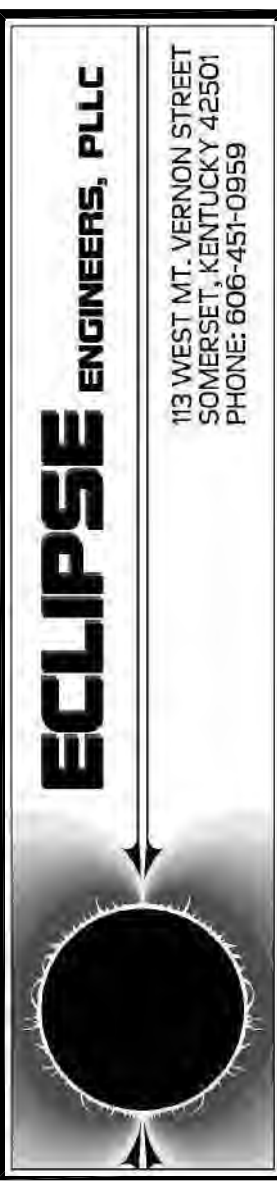
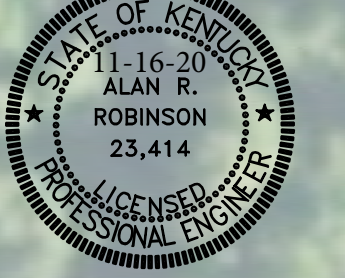
PHILLIPS VICTOR
3098 N HWY 1651
WHITLEY CITY KY 42653

KING DUANE & VERA ELLEN
PO BOX 531
STEARNS KY 42647

HEATH RODNEY
370 HWY 741
STEARNS KY 42647

HEATH RODNEY & FAYE
370 HWY 741
STEARNS KY 42647

Alan R. Robison

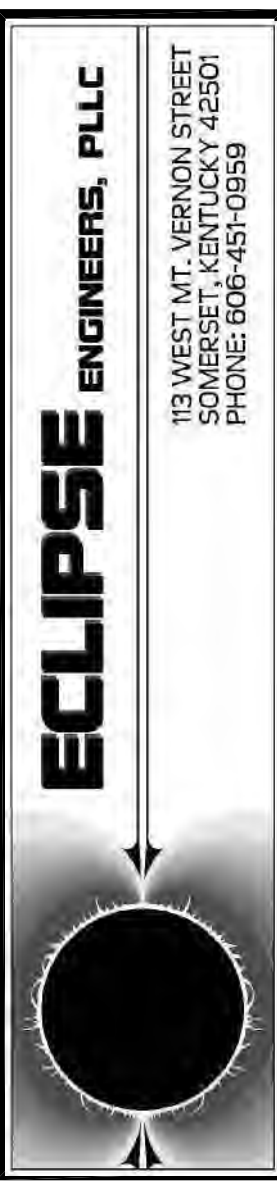


SCALE:	DESIGNED BY:	ARR	DATE:
1"=50'	DRAWN BY:	WBD	
	CHECKED BY:	ARR	
	PROJECT NO.:	19016	
	DATE:	AUGUST 2020	
	CAD DWG ID:	JOB 19016 SANITARY SEWER	

McCREARY COUNTY
WATER DISTRICT
456 N. HWY 27
WHITLEY CITY, KENTUCKY 42653

PLAN
SANITARY SEWER COLLECTION SYSTEM EXPANSION
PHASE ONE - CONTRACT NO. 39

SHEET NUMBER:
37

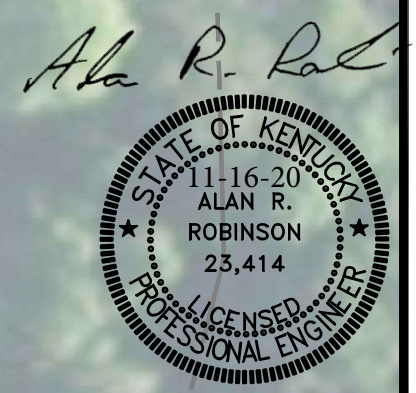


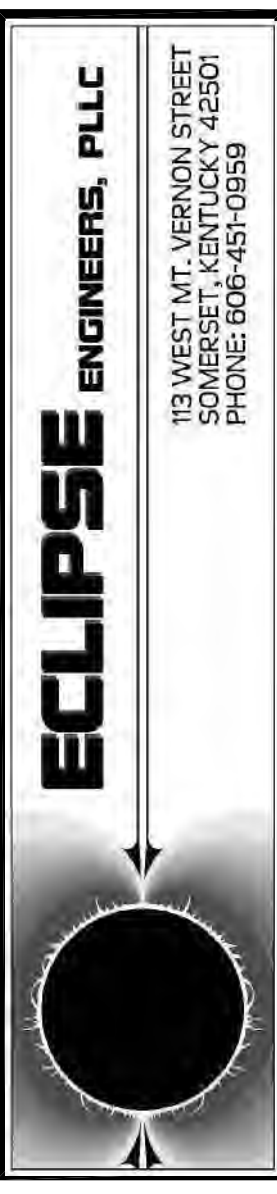
SCALE:	DESIGNED BY:	1"=50'
DRAWN BY:	ARR	ARR
CHECKED BY:	WBD	WBD
DATE:	ARR	ARR
CAD DWG ID:	PROJECT NO:	19016
	DATE:	AUGUST 2020
		JOB NO: 19016 SANITARY SEWER

McCREARY COUNTY
 WATER DISTRICT
 456 N. HWY 27
 WHITLEY CITY, KENTUCKY 42653

PLAN
 SANITARY SEWER COLLECTION SYSTEM EXPANSION
 PHASE ONE - CONTRACT No. 39

SHEET NUMBER:
38





SCALE:	DESIGNED BY:	1"=50'	ARR	DATE:
DRAWN BY:	WBD	BY:	ARR	
CHECKED BY:	ARR	REVISION:	ARR	
PROJECT NO.:	19016		ARR	
DATE:	AUGUST 2020		ARR	
CAD DWG ID:	JOB 19016 SANITARY SEWER			

McCREARY COUNTY
WATER DISTRICT
 456 N. HWY 27
 WHITLEY CITY, KENTUCKY 42653

PLAN
SANITARY SEWER COLLECTION SYSTEM EXPANSION
PHASE ONE - CONTRACT NO. 39

SHEET NUMBER:
39

Alan R. Robinson
 STATE OF KENTUCKY
 11-16-20
 ALAN R. ROBINSON
 23,414
 LICENSED PROFESSIONAL ENGINEER



MCKEE LEROY & DELLA
 450 WILBURN K ROSS HWY
 STEARNS KY 42647