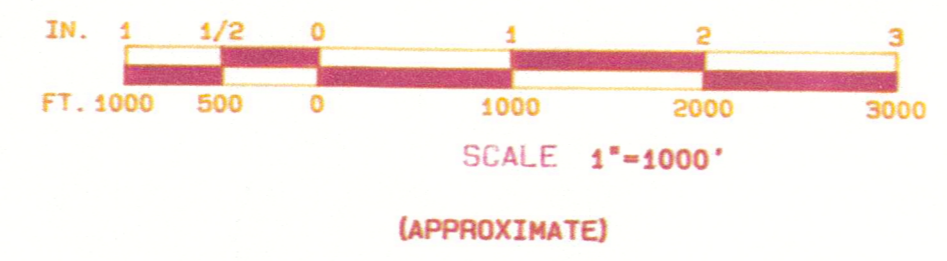


VALVE DESIGNATION KEY

SYSTEM DESIGNATION	214	VALVE NUMBER
(1 - KY/W, VA)	8	SHEET NUMBER
(2 - COLUMBIA)		

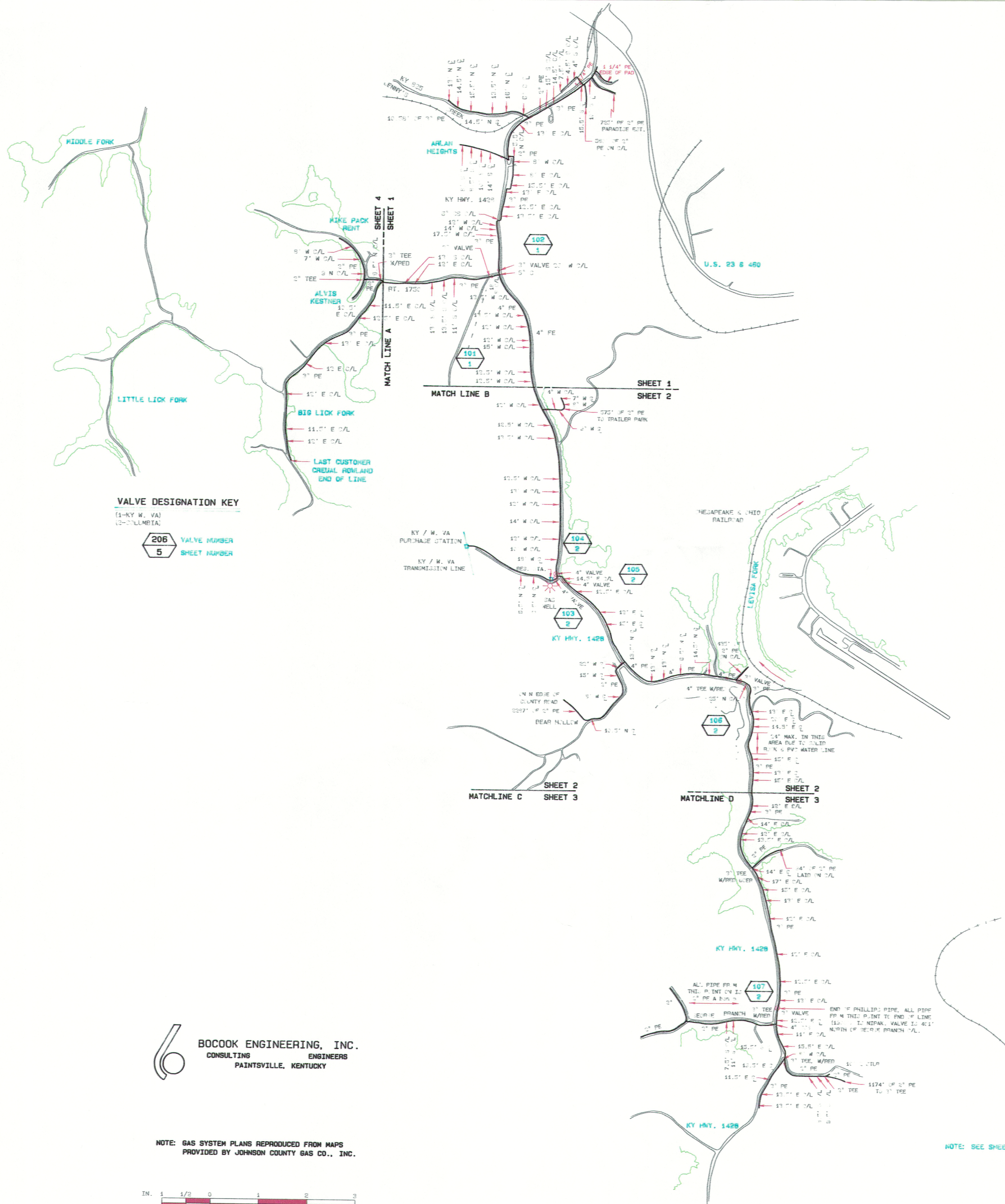
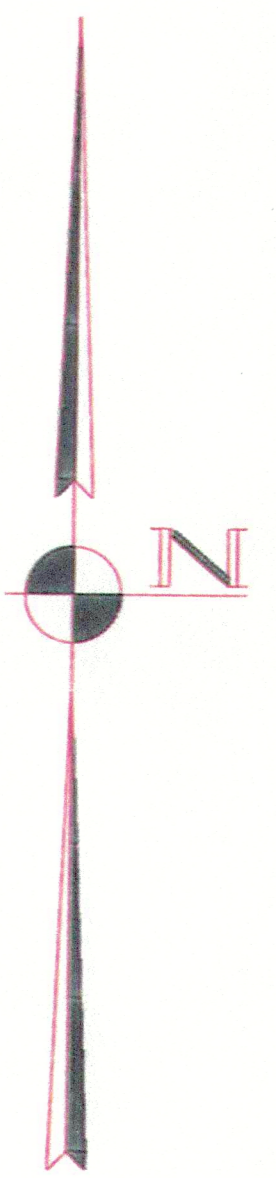
NOTE: CROSSHATCHING INDICATES APPROX. AREA EXTENT OF STRIP MINING.

NOTE: GAS SYSTEM PLANS REPRODUCED FROM MAPS PROVIDED BY JOHNSON COUNTY GAS CO., INC.



BOCCHOK ENGINEERING, INC.
CONSULTING ENGINEERS
PAINTSVILLE, KENTUCKY

AS-BUILT

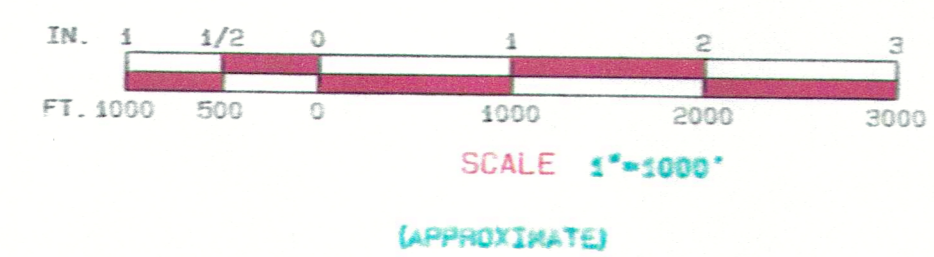


VALVE DESIGNATION KEY
 (1-KY W. VA)
 (2-COLUMBIA)

206	VALVE NUMBER
5	SHEET NUMBER

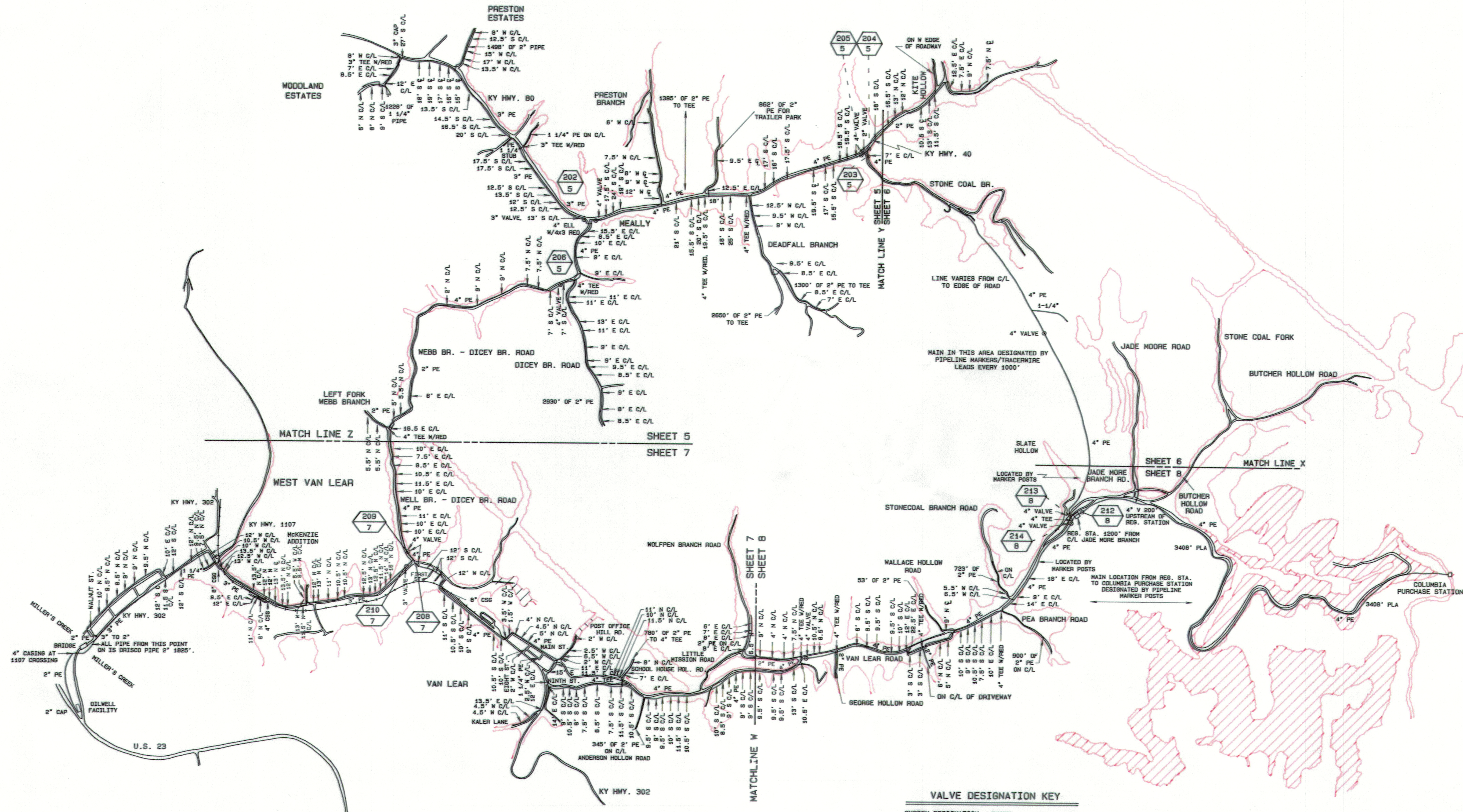
BOCOOK ENGINEERING, INC.
 CONSULTING ENGINEERS
 PAINTSVILLE, KENTUCKY

NOTE: GAS SYSTEM PLANS REPRODUCED FROM MAPS PROVIDED BY JOHNSON COUNTY GAS CO., INC.



NOTE: SEE SHEET 11 FOR EXISTING SYSTEM IN THIS AREA.

AS-BUILT

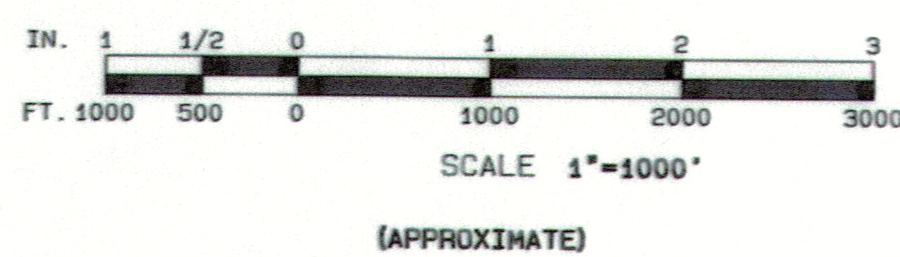


VALVE DESIGNATION KEY

SYSTEM DESIGNATION (1 - KY/W. VA) (2 - COLUMBIA)	214 - VALVE NUMBER 8 - SHEET NUMBER
--	--

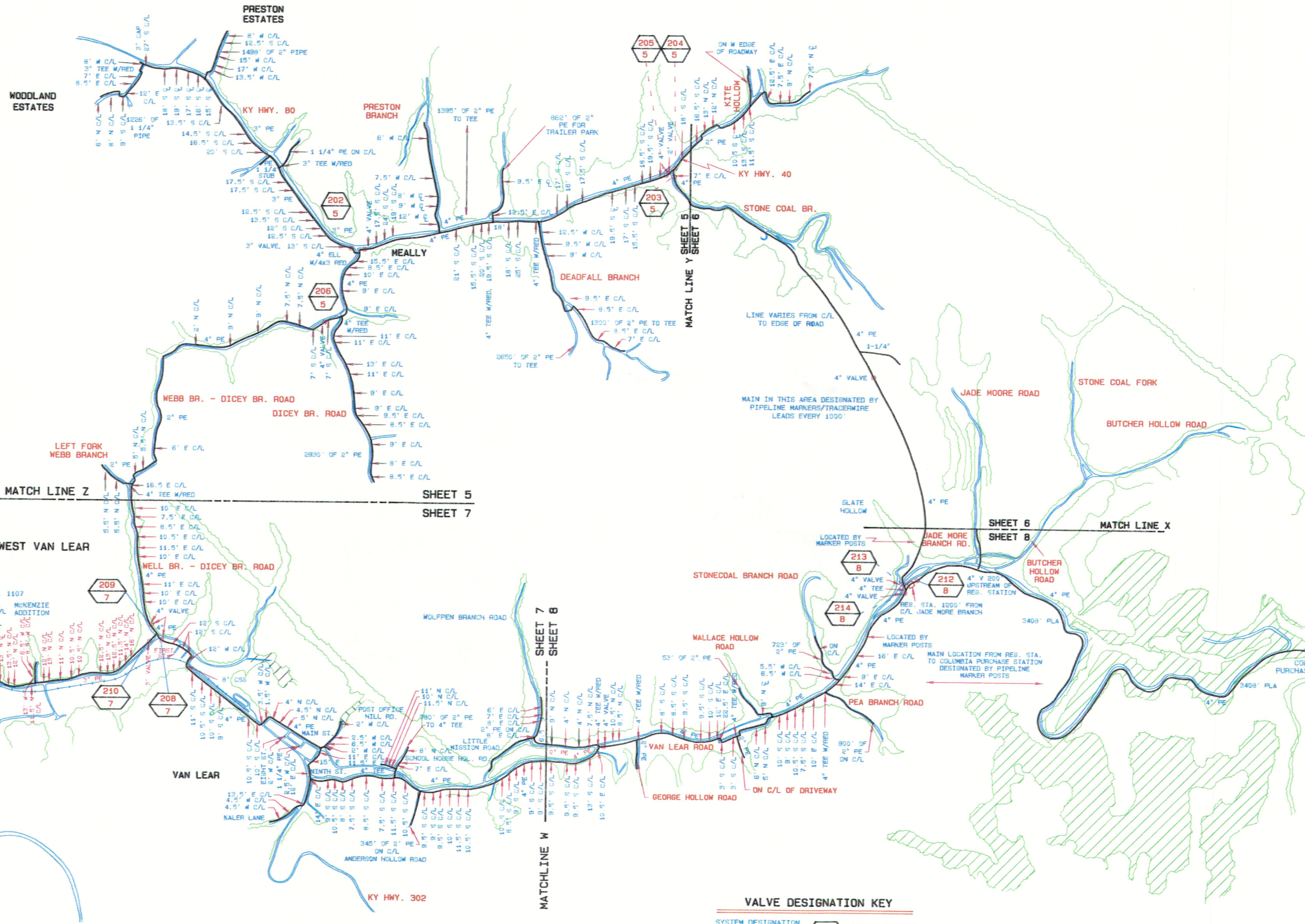
NOTE: CROSSHATCHING INDICATES APPROX. AREA EXTENT OF STRIP MININGS.

NOTE: GAS SYSTEM PLANS REPRODUCED FROM MAPS PROVIDED BY JOHNSON COUNTY GAS CO., INC.



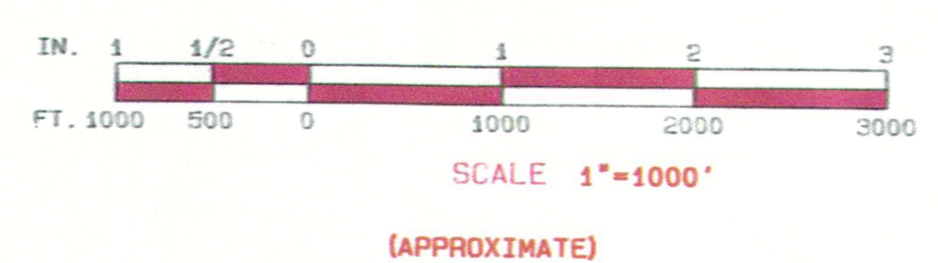
BOCOOK ENGINEERING, INC.
CONSULTING ENGINEERS
PAINTSVILLE, KENTUCKY
W.O. #2033

AS-BUILT



BCCOOK ENGINEERING, INC.
 CONSULTING ENGINEERS
 PAINTSVILLE, KENTUCKY

NOTE: GAS SYSTEM PLANS REPRODUCED FROM MAPS
 PROVIDED BY JOHNSON COUNTY GAS CO., INC.

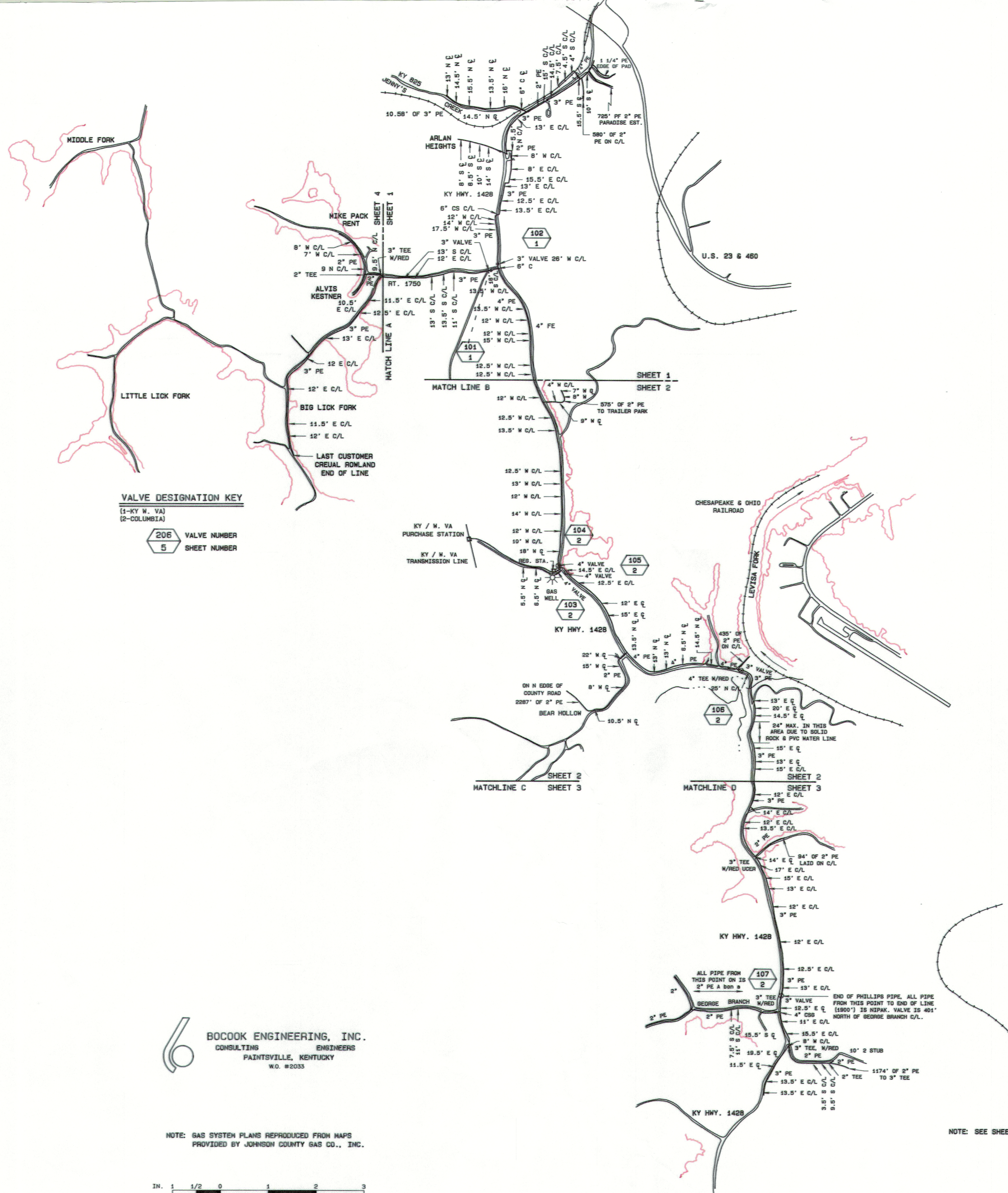


VALVE DESIGNATION KEY

SYSTEM DESIGNATION	214	8
1 - KY/W. VA	VALVE NUMBER	SHEET NUMBER
2 - COLUMBIA		

NOTE: CROSSHATCHING INDICATES APPROX. AREA

AS-BUILT

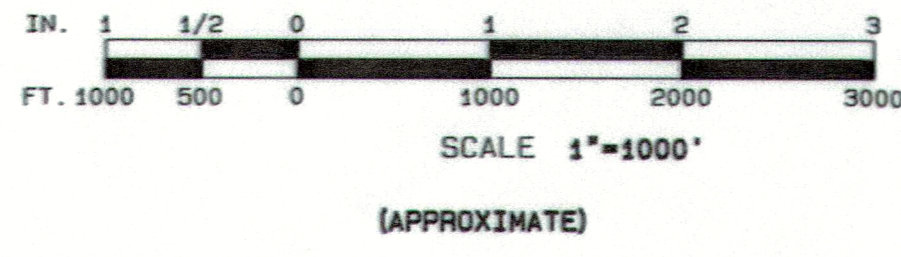


VALVE DESIGNATION KEY
 (1-KY W. VA)
 (2-COLUMBIA)

206	VALVE NUMBER
5	SHEET NUMBER

BOCOOK ENGINEERING, INC.
 CONSULTING ENGINEERS
 PAINTSVILLE, KENTUCKY
 N.O. #2033

NOTE: GAS SYSTEM PLANS REPRODUCED FROM MAPS PROVIDED BY JOHNSON COUNTY GAS CO., INC.



NOTE: SEE SHEET 11 FOR EXISTING SYSTEM IN THIS AREA.

AS-BUILT