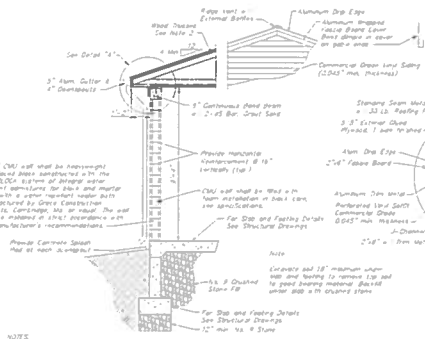




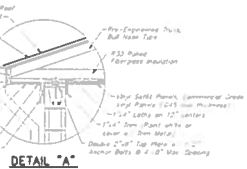
PUMP STATION DETAILS



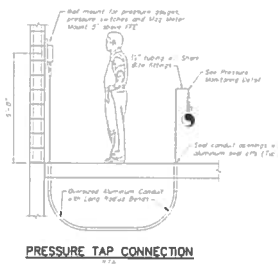
NOTES

- CONCRETE WALL
 - 4\"/>
- WOOD ROOFING
 - Roof trusses to be designed by the manufacturer. Support shall meet all applicable building codes and the requirements of the State Water Control Board. Design details shall be as follows:
 - Span: 12'-0\"/>
- Pressure joints over all openings with better block attached with 2x4 Bar. Length of better shall be at least equal to the rough opening plus 2-foot bearing on each side of opening. The better block shall have the same face as the wall block.

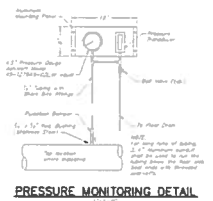
WALL SECTION
 N7.1



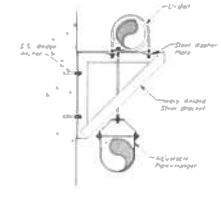
DETAIL 'A'
 N7.2



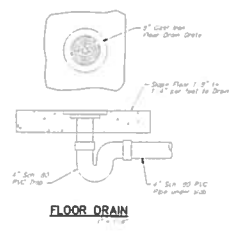
PRESSURE TAP CONNECTION
 N7.3



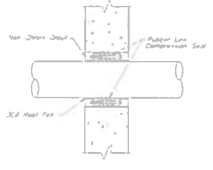
PRESSURE MONITORING DETAIL
 N7.4



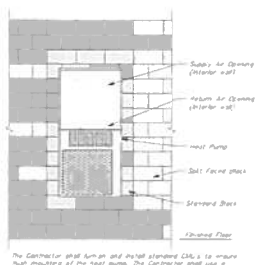
PIPE BRACKET AND HANGER DETAIL
 N7.5



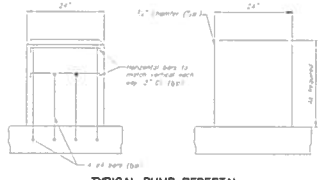
FLOOR DRAIN
 N7.6



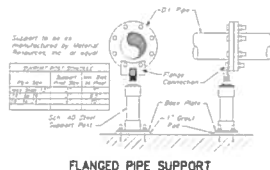
WALL/FLOOR PENETRATION SEAL
 N7.7



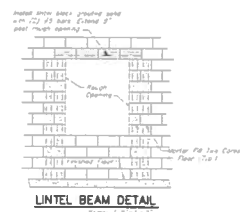
CMU DETAIL AT HEAT PUMP
 N7.8



TYPICAL PUMP PEDESTAL CONCRETE SUPPORT REINFORCEMENT
 N7.9

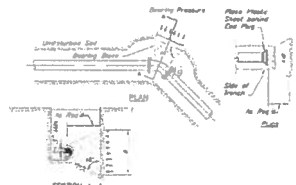


FLANGED PIPE SUPPORT
 N7.10

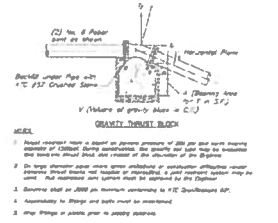


INTEL BEAM DETAIL
 N7.11

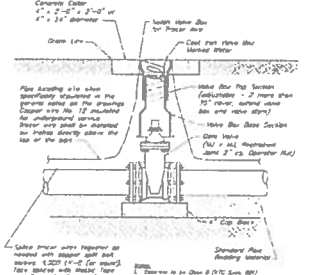
P:\2017\2017036\2017036.dwg, 12/15/17, 10:00 AM, KENVIRONS, INC.



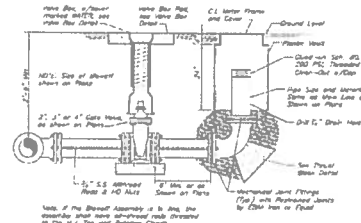
HORIZONTAL THRUST BLOCK
 July 2012
 Scale: 1/4" = 1'-0"



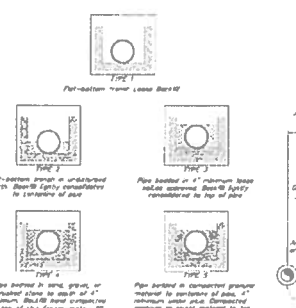
VERTICAL THRUST BLOCK
 July 2012
 Scale: 1/4" = 1'-0"



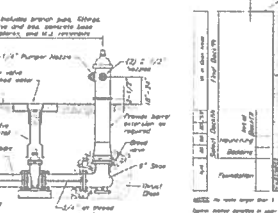
VALVE BOX INSTALLATION
 July 2012
 Scale: 1/2" = 1'-0"



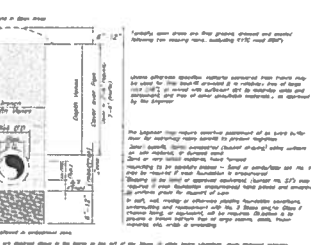
BLOWOFF ASSEMBLY DETAIL
 Feb 2012
 Scale: 1/4" = 1'-0"



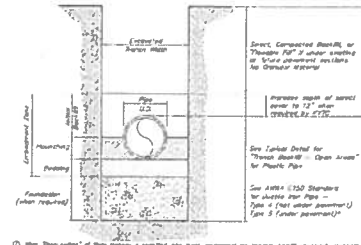
LAYING CONDITIONS FOR DUCTILE IRON PIPE
 Dec. 2009
 N.T.S.
 Rev. April 2010



FIRE HYDRANT
 Dec. 2014
 Scale: 1/4" = 1'-0"

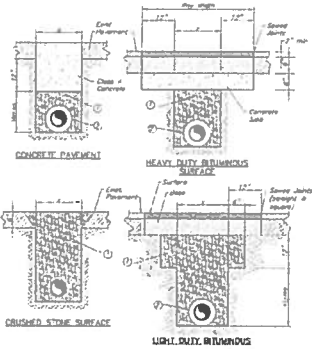


TRENCH BACKFILL ON PLASTIC PIPE
 Dec. 2014
 Scale: 1/4" = 1'-0"



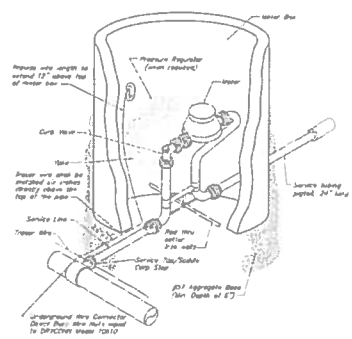
TRENCH BACKFILL ON HIGHWAY ROW
 Dec. 2014
 Scale: 1/4" = 1'-0"

MISCELLANEOUS DETAILS



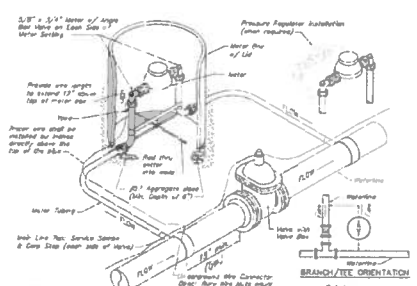
- NOTES:**
1. The above minimum thickness for pavement 7" and up indicated on Figure P-21 - Pipe Size.
 2. The above minimum thickness for pavement 12" and up indicated on Figure P-21 - Pipe Size.
 3. The above minimum thickness for pavement 12" and up indicated on Figure P-21 - Pipe Size.
 4. The above minimum thickness for pavement 12" and up indicated on Figure P-21 - Pipe Size.

PAVEMENT REPLACEMENT
Scale: 1/4" = 1'-0"



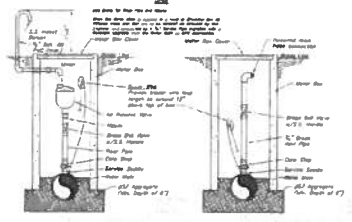
- NOTES:**
1. The above meter for meters 1/2" and up indicated on Figure P-21 - Pipe Size.
 2. The above meter for meters 1/2" and up indicated on Figure P-21 - Pipe Size.
 3. The above meter for meters 1/2" and up indicated on Figure P-21 - Pipe Size.

METER SETTING
Scale: 1/4" = 1'-0"



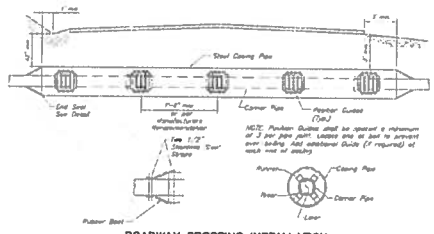
- NOTES:**
1. The above meter for meters 1/2" and up indicated on Figure P-21 - Pipe Size.
 2. The above meter for meters 1/2" and up indicated on Figure P-21 - Pipe Size.
 3. The above meter for meters 1/2" and up indicated on Figure P-21 - Pipe Size.

LEAK DETECTION METER
Scale: 1/4" = 1'-0"

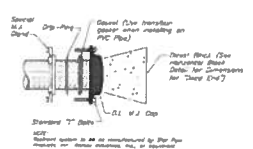


AUTOMATIC ARV INSTALLATION
Scale: 1/4" = 1'-0"

MANUAL ARV INSTALLATION
Scale: 1/4" = 1'-0"



ROADWAY CROSSING INSTALLATION
Scale: 1/4" = 1'-0"



END CAP
Scale: 1/4" = 1'-0"

MISCELLANEOUS DETAILS

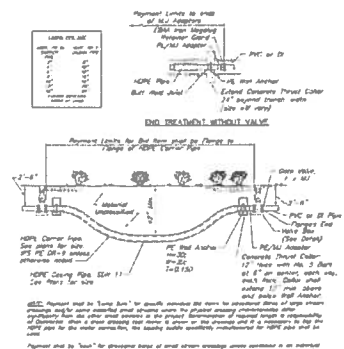
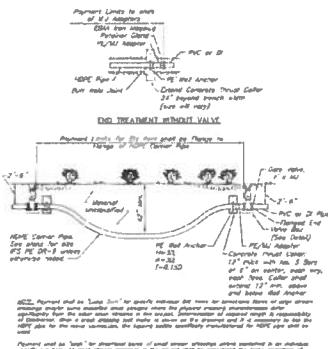
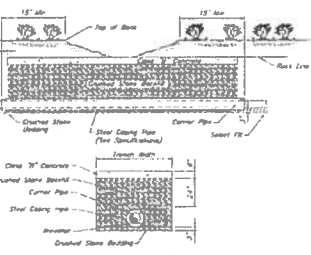
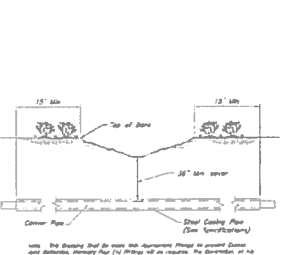
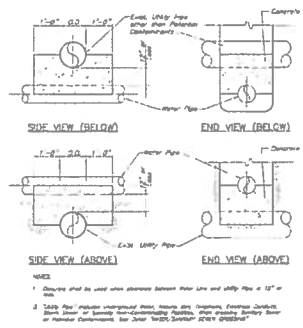
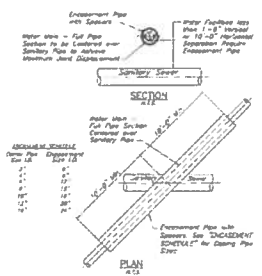
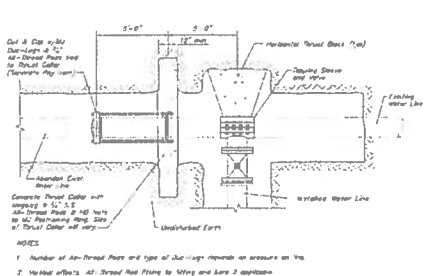
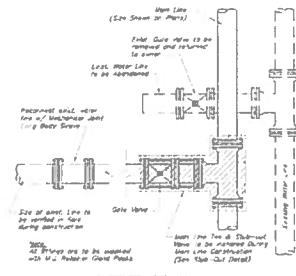
WOOD CREEK WATER DISTRICT
KY 490 / US 25 N. WATERLINE REPLACEMENT
LAUREL COUNTY, KENTUCKY



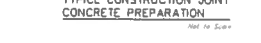
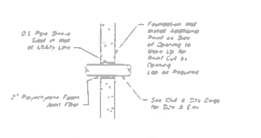
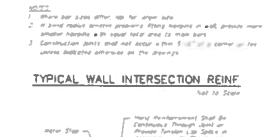
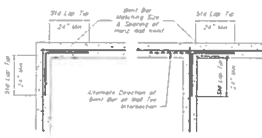
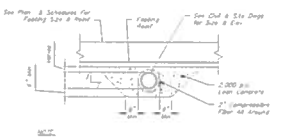
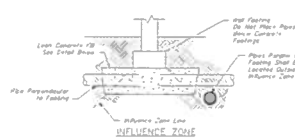
KENVIRONS, INC.
FRANKFORT, KENTUCKY



PROJECT NO.
2017036
SHEET NO.
D-2



MISCELLANEOUS DETAILS



MARK	DATE	D	BOTTOM REINF.	TOP REINF.	STAIRS
MB-1	3-8-17	8"	2#3	None	None
MB-2	8-8-17	18"	2#3	None	None
MB-3	11-21-17	24"	2#3	None	None
MB-4	12-14-17	24"	2#3	None	None

MARK	DATE	D	BOTTOM REINF.	TOP REINF.	STAIRS
MB-1	3-8-17	8"	2#3	None	None
MB-2	8-8-17	18"	2#3	None	None
MB-3	11-21-17	24"	2#3	None	None
MB-4	12-14-17	24"	2#3	None	None

MARK	DATE	D	BOTTOM REINF.	TOP REINF.	STAIRS
MB-1	3-8-17	8"	2#3	None	None
MB-2	8-8-17	18"	2#3	None	None
MB-3	11-21-17	24"	2#3	None	None
MB-4	12-14-17	24"	2#3	None	None

MARK	DATE	D	BOTTOM REINF.	TOP REINF.	STAIRS
MB-1	3-8-17	8"	2#3	None	None
MB-2	8-8-17	18"	2#3	None	None
MB-3	11-21-17	24"	2#3	None	None
MB-4	12-14-17	24"	2#3	None	None

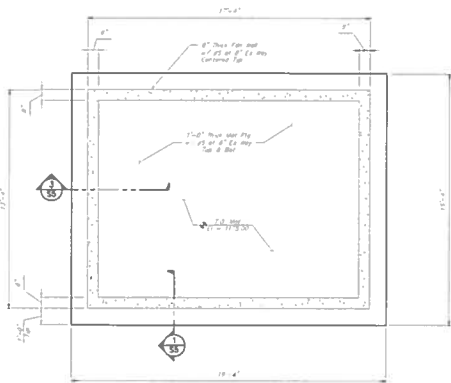
MARK	DATE	D	BOTTOM REINF.	TOP REINF.	STAIRS
MB-1	3-8-17	8"	2#3	None	None
MB-2	8-8-17	18"	2#3	None	None
MB-3	11-21-17	24"	2#3	None	None
MB-4	12-14-17	24"	2#3	None	None

MARK	DATE	D	BOTTOM REINF.	TOP REINF.	STAIRS
MB-1	3-8-17	8"	2#3	None	None
MB-2	8-8-17	18"	2#3	None	None
MB-3	11-21-17	24"	2#3	None	None
MB-4	12-14-17	24"	2#3	None	None



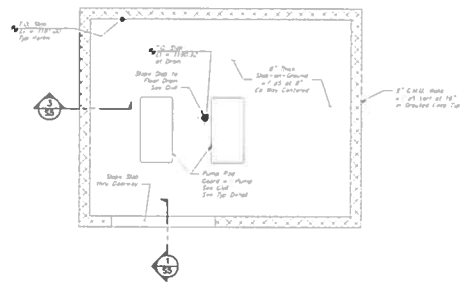
SDG LLC
 305 N. Main St. Ste. 110
 Frankfort, KY 40601
 (502) 625-1111

STRUCTURAL TYPICAL DETAILS



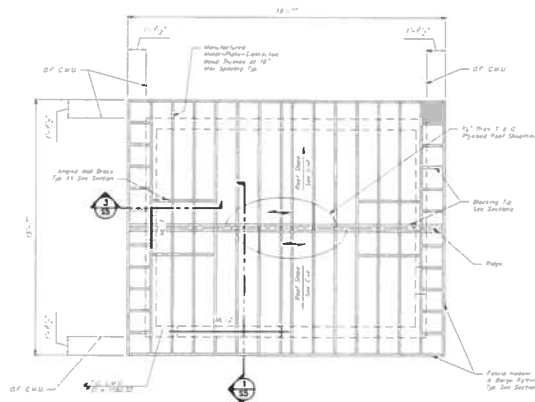
FOUNDATION PLAN
1/2" = 1'-0"

Note:
Backfill specification was obtained from and set so that the grade elevation difference on either side of the walls is no more than 24" at any time.



SLAB PLAN
1/2" = 1'-0"

Note:
Consult the location of joist and steel beam to be used the location of submittals. Consult with Engineer and Owner if necessary.



ROOF FRAMING PLAN
1/2" = 1'-0"

SDG SDG LLC
325 N. Main St. Ste. 410
Frankfort, KY 40601
(502) 251-7800

KY 490 P.S. - STRUCTURAL PLANS

WOOD CREEK WATER DISTRICT
WATER SYSTEM IMPROVEMENTS
LAUREL COUNTY, KENTUCKY

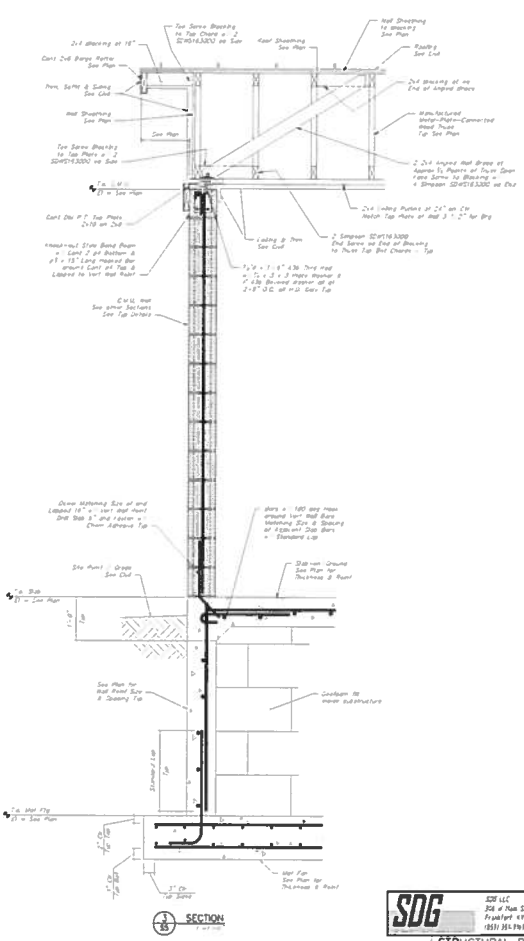
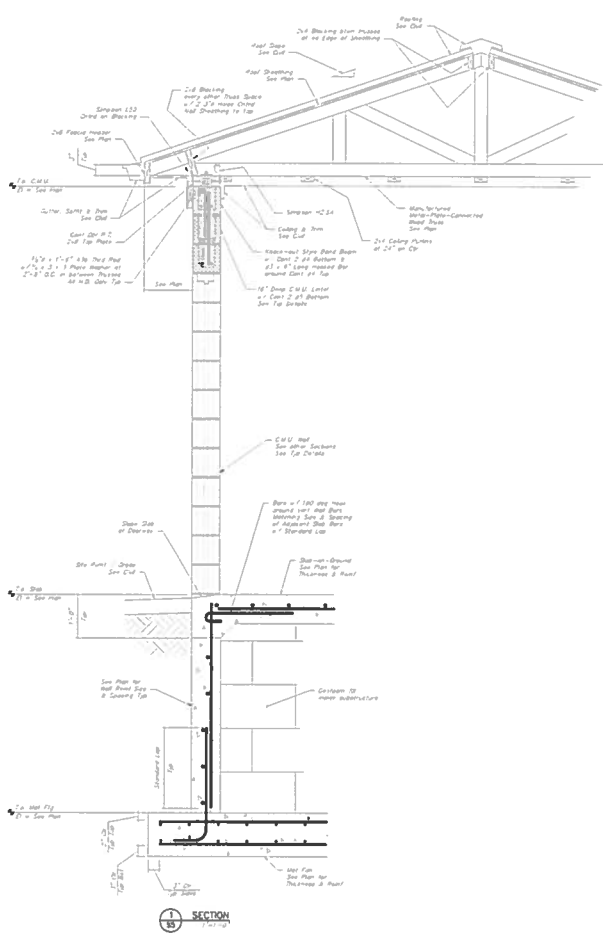


KENVIRONS, INC.
FRANKFORT, KENTUCKY



PROJECT NO
2017036

SHEET NO
54

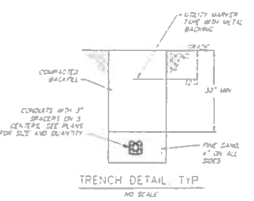


SDG 200 LLC
303 N. Park St. Ste. 115
Frankfort, KY 40601
(502) 363-7480

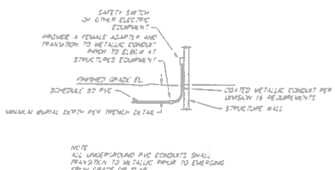
STRUCTURAL DETAILS



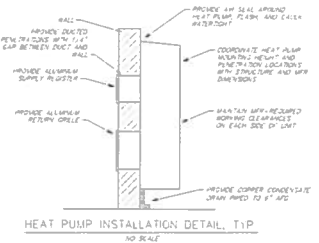
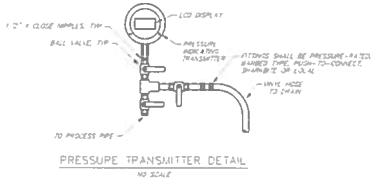
LOVO
 SYSTEMS
 ELECTRICAL DETAILS



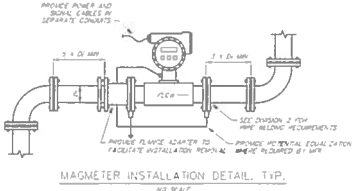
- TRENCHING NOTES**
- PROVIDE PULL CORD IN ALL CONDUITS
 - UTILITY MARKER TAPE SHALL RUN THE ENTIRE LENGTH OF TRENCH
 - MAINTAIN MINIMUM 12" SPACING BETWEEN INSTALLATIONS AND PIPES
 - MAINTAIN MINIMUM 36" SPACING BETWEEN OTHER UTILITY MARKING INCLUDING WATER MAINS



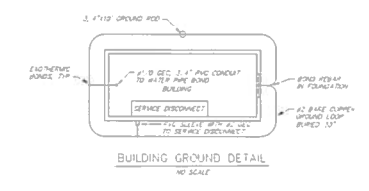
TYPICAL UNDERGROUND PVC CONDUIT TRANSITION TO METALLIC CONDUIT
 NO SCALE



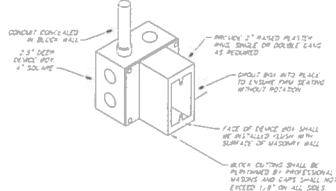
HEAT PUMP INSTALLATION DETAIL, TYP
 NO SCALE



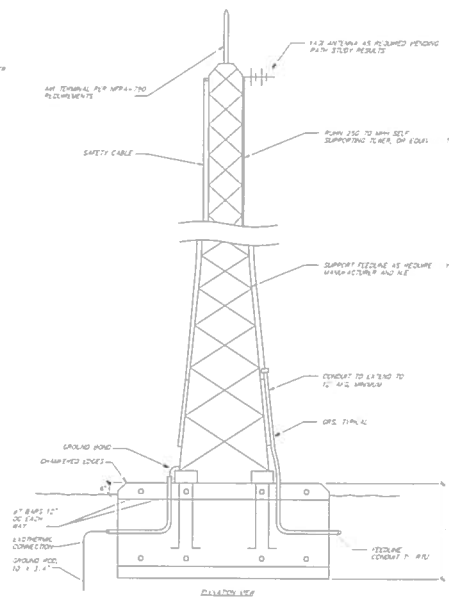
MAGNETER INSTALLATION DETAIL, TYP.
 NO SCALE



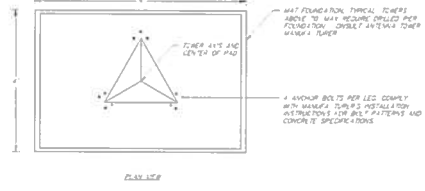
BUILDING GROUND DETAIL
 NO SCALE



MOTOR & DEVICE BOX DETAIL
 NOT TO SCALE



ANTENNA TOWER DETAIL
 ELEVATION VIEW
 NOT TO SCALE

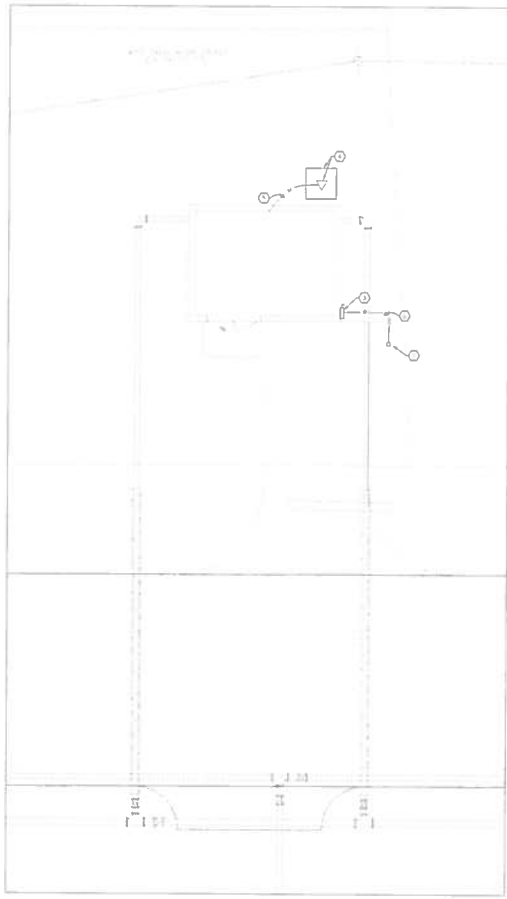


ANTENNA TOWER DETAIL
 PLAN VIEW
 NOT TO SCALE

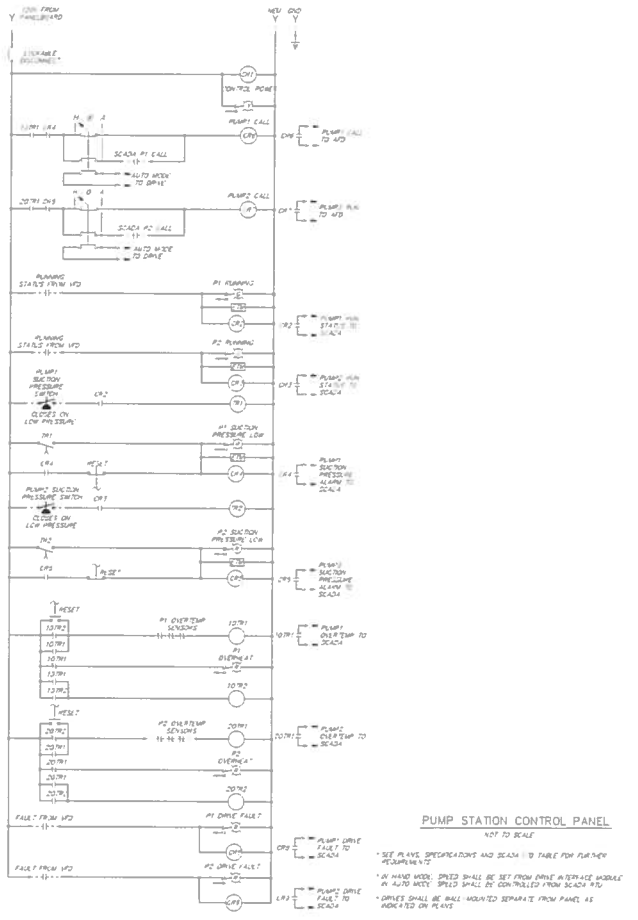


SHEET NOTES:

- NEW TRANSMISSION POLE BY UTILITY, APPROXIMATE LOCATION COORDINATE ACTUAL LOCATION WITH UTILITY
- PROVIDE UTILITY SERVICE CONDUIT WITH HEIGHT PER POLE PER UTILITY REQUIREMENTS
- PROVIDE NEW LINE, SEE NON-CODED SAFETY SWITCH PER UTILITY REQUIREMENTS
- PROVIDE 20 ANTENNA TOWER WITH CONCRETE MAT FOUNDATION PER DETAIL
- PROVIDE ANTENNA CABLE 1/2" TO SCADA BUS



PUMP STATION ELECTRICAL SITE PLAN
 SCALE 1" = 10'



PUMP STATION CONTROL PANEL
 NOT TO SCALE

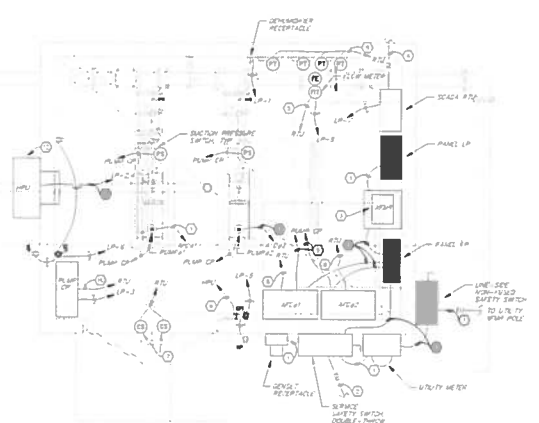
- *SEE PLAVE SPECIFICATIONS AND DETAILS TABLE FOR PARTS AND REQUIREMENTS
- *IN HARD WIRE, SPEED SHALL BE SET FROM DRIVE AS SERVICE MODULE IN AUTO WIRE, SPEED SHALL BE CONTROLLED FROM SCADA W/5
- *DRIVES SHALL BE WALL MOUNTED SEPARATE FROM PANEL AS INDICATED ON PLAVE



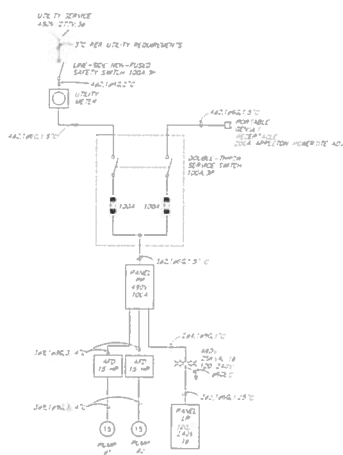
PROJECT NO. 2017036
 SHEET NO. E-4



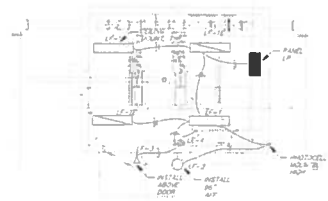
- GENERAL NOTES:**
- 1. ALL ELECTRICAL EQUIPMENT SHALL BE NEMA 1 ENCLOSURE EXCEPT G.E. SPECIAL EQUIPMENT SHALL BE NEMA 1E 2.2.
- SHEET NOTES:**
1. SEE ONE-LINE DIAGRAM FOR REQUIREMENTS
 2. PROVIDE 60 GALLON 4" AND 40 GALLON GROUND LOOP PIPE BUCKING GROUND DETAIL
 3. PROVIDE TRANSFORMER INSTALLED ON 4" CONCRETE AND USE ONE-LINE DIAGRAM FOR REQUIREMENTS
 4. PROVIDE 40 AMPER HOUR BATTERY SEE ELECTRICAL SITE PLAN FOR CONNECTION TO BATTERY TOWER
 5. PROVIDE 2-1/2" DIA. STEEL PIPES 4" DIA.
 6. PROVIDE THERMOCOUSTIC CABLE TRAY 4" DIA.
 7. PROVIDE MAGNETIC COVER CONTACT SWITCHES INSTALLED TO SEND A SIGNAL WHEN COVER IS OPEN
 8. PROVIDE 4-1/2" DIA. STEEL PIPES 4" DIA.
 9. PROVIDE 40 AMPER HOUR BATTERY 4" DIA.
 10. PROVIDE CONTACTS 40 AMPER 125V 1/2" DIA.
 11. PROVIDE CONTACTS 4" DIA.
 12. PROVIDE 40 AMPER HOUR BATTERY 4" DIA.



PUMP STATION POWER PLAN
 SCALE: 1/2" = 1'



PUMP STATION ONE-LINE DIAGRAM
 NO TO SCALE



PUMP STATION LIGHTING PLAN
 SCALE: 1/4" = 1'

CONDUCTORS	NO. TUB	TYPE	LINE	CONDUIT	WIRE	WIRE	WIRE	WIRE	WIRE	WIRE	NOTES
SS1A	1	POWER LOSS ALARM	10	1	1	1	1	1	1	1	
SS1B	1	DOOR OPEN ALARM	10	1	1	1	1	1	1	1	
SS1C	1	PUMP 1 CALL TO START	10	1	1	1	1	1	1	1	
SS1D	1	PUMP 1 RUNNING STATUS	10	1	1	1	1	1	1	1	REPORT 1'S STATUS & RUNTIME
SS1E	1	PUMP 2 CALL TO START	10	1	1	1	1	1	1	1	
SS1F	1	PUMP 2 RUNNING STATUS	10	1	1	1	1	1	1	1	
SS1G	1	PUMP 3 CALL TO START	10	1	1	1	1	1	1	1	
SS1H	1	PUMP 3 RUNNING STATUS	10	1	1	1	1	1	1	1	
SS1I	1	PUMP 1 RUNNING STATUS	10	1	1	1	1	1	1	1	REPORT 1'S STATUS & RUNTIME
SS1J	1	PUMP 2 RUNNING STATUS	10	1	1	1	1	1	1	1	
SS1K	1	PUMP 3 RUNNING STATUS	10	1	1	1	1	1	1	1	
SS1L	1	PUMP 1 RUNNING STATUS	10	1	1	1	1	1	1	1	REPORT 1'S STATUS & RUNTIME
SS1M	1	PUMP 2 RUNNING STATUS	10	1	1	1	1	1	1	1	
SS1N	1	PUMP 3 RUNNING STATUS	10	1	1	1	1	1	1	1	
SS1O	1	PUMP 1 RUNNING STATUS	10	1	1	1	1	1	1	1	REPORT 1'S STATUS & RUNTIME
SS1P	1	PUMP 2 RUNNING STATUS	10	1	1	1	1	1	1	1	
SS1Q	1	PUMP 3 RUNNING STATUS	10	1	1	1	1	1	1	1	
SS1R	1	PUMP 1 RUNNING STATUS	10	1	1	1	1	1	1	1	REPORT 1'S STATUS & RUNTIME
SS1S	1	PUMP 2 RUNNING STATUS	10	1	1	1	1	1	1	1	
SS1T	1	PUMP 3 RUNNING STATUS	10	1	1	1	1	1	1	1	
SS1U	1	PUMP 1 RUNNING STATUS	10	1	1	1	1	1	1	1	REPORT 1'S STATUS & RUNTIME
SS1V	1	PUMP 2 RUNNING STATUS	10	1	1	1	1	1	1	1	
SS1W	1	PUMP 3 RUNNING STATUS	10	1	1	1	1	1	1	1	
SS1X	1	PUMP 1 RUNNING STATUS	10	1	1	1	1	1	1	1	REPORT 1'S STATUS & RUNTIME
SS1Y	1	PUMP 2 RUNNING STATUS	10	1	1	1	1	1	1	1	
SS1Z	1	PUMP 3 RUNNING STATUS	10	1	1	1	1	1	1	1	

SCADA IO TABLE

