

- NOT A PROPERTY BOUNDARY SURVEY -

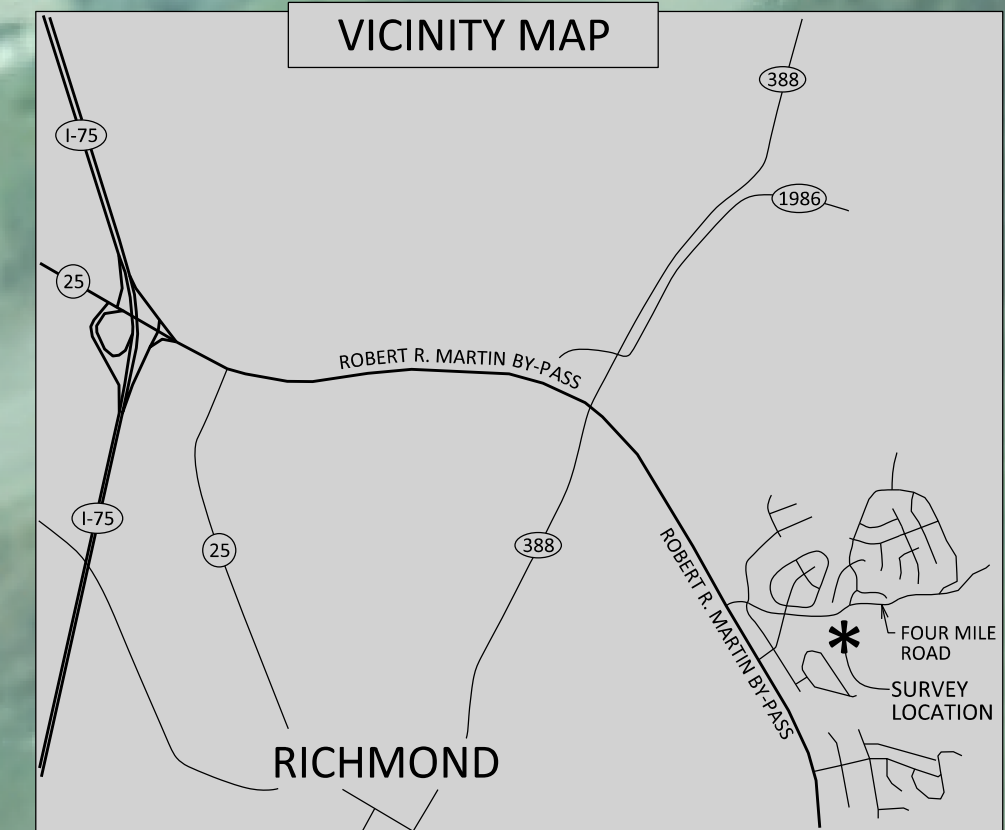
PRIMROSE CIRCLE

FOUR MILE ROAD

CLARK ENERGY SERVICE TERRITORY

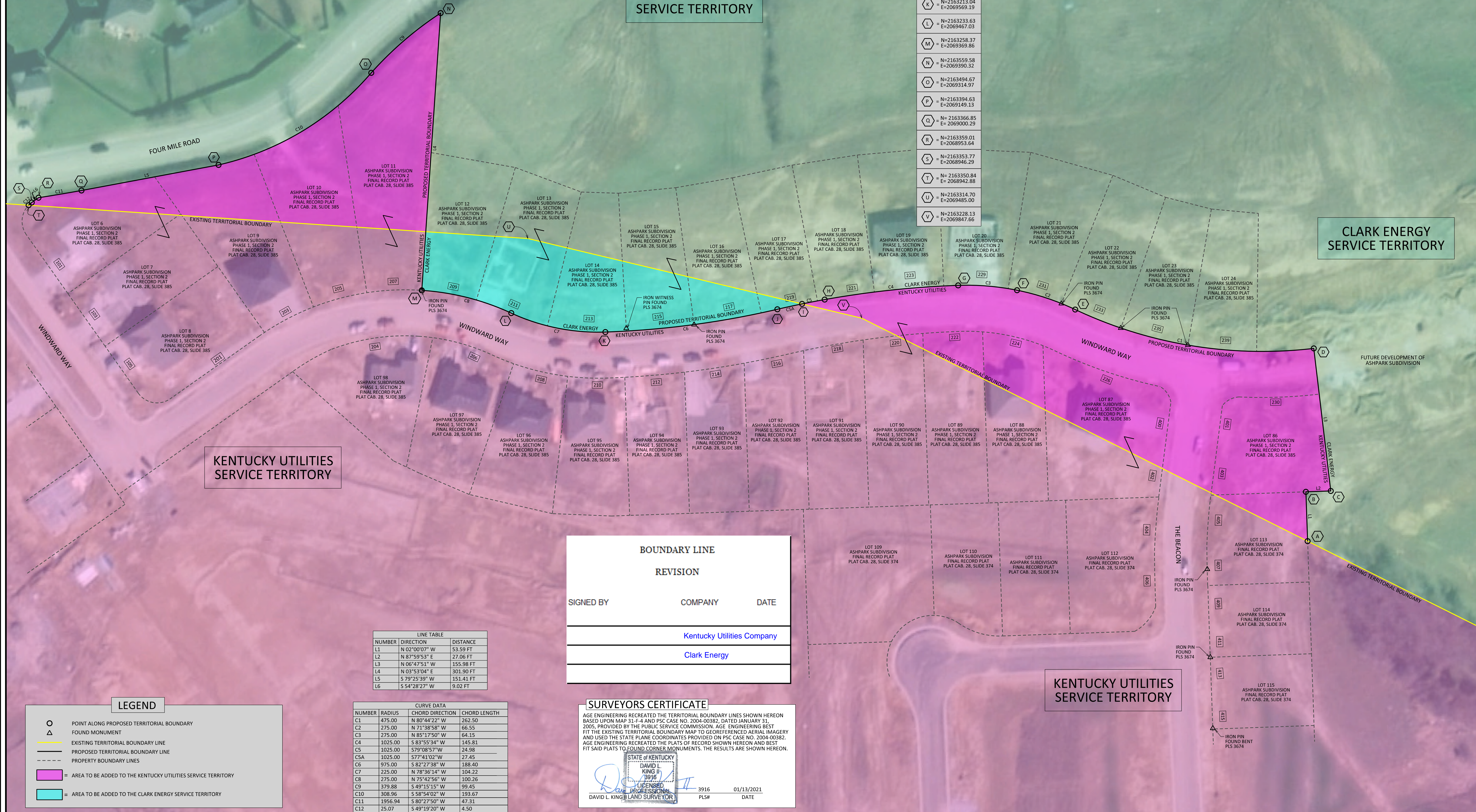
NOTES

- 1) SURVEY DATUM:  
SURVEY CONTROL WAS BASED ON A KYTC VRS ENABLED GPS ROVER.  
HORIZONTAL: KENTUCKY SOUTH ZONE (NAD83)  
VERTICAL: NORTH AMERICAN VERTICAL DATUM 1988 - GEOID 12A  
ALL BEARINGS, DISTANCES, AND COORDINATES SHOWN HEREON ARE REFERENCED TO GRID NORTH OF THE KENTUCKY SOUTH ZONE STATE PLANE COORDINATE SYSTEM (NAD83).  
ALL HORIZONTAL MEASUREMENTS SHOWN HEREON ARE EXPRESSED IN US SURVEY FEET.
- 2) THE EXISTING TERRITORIAL BOUNDARY LINES SHOWN HEREON ARE BASED UPON MAP 31-F-4, APPROVED BY THE PUBLIC SERVICE COMMISSION (PSC) ON DECEMBER 11, 1995 AND PER PSC CASE NO. 2004-00382, DATED JANUARY 31 2005.
- 3) AGE ENGINEERING PERFORMED A FIELD SURVEY ON JUNE 1ST, 2020 TO LOCATE CORNER MONUMENTATION OF THE PLATS OF RECORD SHOWN HEREON. MONUMENTS FOUND ARE NOTED ON THIS MAP. THE PLATS SHOWN HEREON ARE OF RECORD IN THE MADISON CO. CLERKS OFFICE.
- 4) IT IS THE INTENT OF THE PROPOSED TERRITORIAL BOUNDARY LINES TO RUN COINCIDENT WITH EXISTING AND PROPOSED LOT DIVISION LINES.



COORDINATES

A	N=2162985.90 E=2070331.77
B	N=2163039.46 E=2070329.90
C	N=2163040.41 E=2070356.94
D	N=2163195.29 E=2070338.48
E	N=2163237.54 E=2070079.40
F	N=2163258.49 E=2070016.24
G	N=2163263.75 E=2069952.30
H	N=2163248.32 E=2069807.31
I	N=2163243.62 E=2069782.78
J	N=2163237.76 E=2069755.96
K	N=2163213.04 E=2069569.19
L	N=2163233.63 E=2069467.03
M	N=2163258.37 E=2069369.86
N	N=2163559.58 E=2069390.32
O	N=2163494.67 E=2069314.97
P	N=2163394.63 E=2069149.13
Q	N=2163366.85 E=2069000.29
R	N=2163359.01 E=2068953.64
S	N=2163353.77 E=2068946.29
T	N=2163350.84 E=2068942.88
U	N=2163314.70 E=2069485.00
V	N=2163228.13 E=2069847.66



CLARK ENERGY SERVICE TERRITORY

KENTUCKY UTILITIES SERVICE TERRITORY

BOUNDARY LINE REVISION

SIGNED BY	COMPANY	DATE
	Kentucky Utilities Company	
	Clark Energy	

LINE TABLE

NUMBER	DIRECTION	DISTANCE
L1	N 02°00'07" W	53.59 FT
L2	N 87°59'53" E	27.06 FT
L3	N 06°47'51" W	155.98 FT
L4	N 03°53'04" E	301.90 FT
L5	S 79°25'39" W	151.41 FT
L6	S 54°28'27" W	9.02 FT

CURVE DATA

NUMBER	RADIUS	CHORD DIRECTION	CHORD LENGTH
C1	475.00	N 80°44'22" W	262.50
C2	275.00	N 71°38'58" W	66.55
C3	275.00	N 85°17'50" W	64.15
C4	1025.00	S 83°55'34" W	145.81
C5	1025.00	S 79°08'57" W	24.98
CSA	1025.00	S 77°41'02" W	27.45
C6	975.00	S 82°27'38" W	188.40
C7	225.00	N 78°36'14" W	104.22
C8	275.00	N 75°42'56" W	100.26
C9	379.88	S 49°15'15" W	99.45
C10	308.96	S 58°54'02" W	193.67
C11	1956.94	S 80°27'50" W	47.31
C12	25.07	S 49°19'20" W	4.50

SURVEYORS CERTIFICATE

AGE ENGINEERING RECREATED THE TERRITORIAL BOUNDARY LINES SHOWN HEREON BASED UPON MAP 31-F-4 AND PSC CASE NO. 2004-00382, DATED JANUARY 31, 2005, PROVIDED BY THE PUBLIC SERVICE COMMISSION. AGE ENGINEERING BEST FIT THE EXISTING TERRITORIAL BOUNDARY MAP TO GEOREFERENCED AERIAL IMAGERY AND USED THE STATE PLANE COORDINATES PROVIDED ON PSC CASE NO. 2004-00382. AGE ENGINEERING RECREATED THE PLATS OF RECORD SHOWN HEREON AND BEST FIT SAID PLATS TO FOUND CORNER MONUMENTS. THE RESULTS ARE SHOWN HEREON.

STATE OF KENTUCKY  
DAVID L. KING  
LICENSED PROFESSIONAL SURVEYOR  
3916  
01/13/2021  
DAVID L. KING LAND SURVEYOR PLS# DATE

LEGEND

- POINT ALONG PROPOSED TERRITORIAL BOUNDARY
- △ FOUND MONUMENT
- EXISTING TERRITORIAL BOUNDARY LINE
- - - PROPOSED TERRITORIAL BOUNDARY LINE
- PROPERTY BOUNDARY LINES
- = AREA TO BE ADDED TO THE KENTUCKY UTILITIES SERVICE TERRITORY
- = AREA TO BE ADDED TO THE CLARK ENERGY SERVICE TERRITORY

KENTUCKY UTILITIES - CLARK ENERGY  
TERRITORIAL BOUNDARY CHANGES  
ASHPARK SUBDIVISION  
RICHMOND, MADISON COUNTY, KENTUCKY

P.O. BOX 204  
165 FOSTER LANE  
STANFORD, KY 40484  
PHONE (606) 365-8362  
FAX (606) 365-1097



REVISION(S)

SHEET: 1 OF 1

DATE: 01/12/2021  
SCALE: 1" = 50'  
DRAWN BY: DRD  
APPROVED BY: KING  
FILENAME: 19544MAP-V2