

- NOT A PROPERTY BOUNDARY SURVEY -

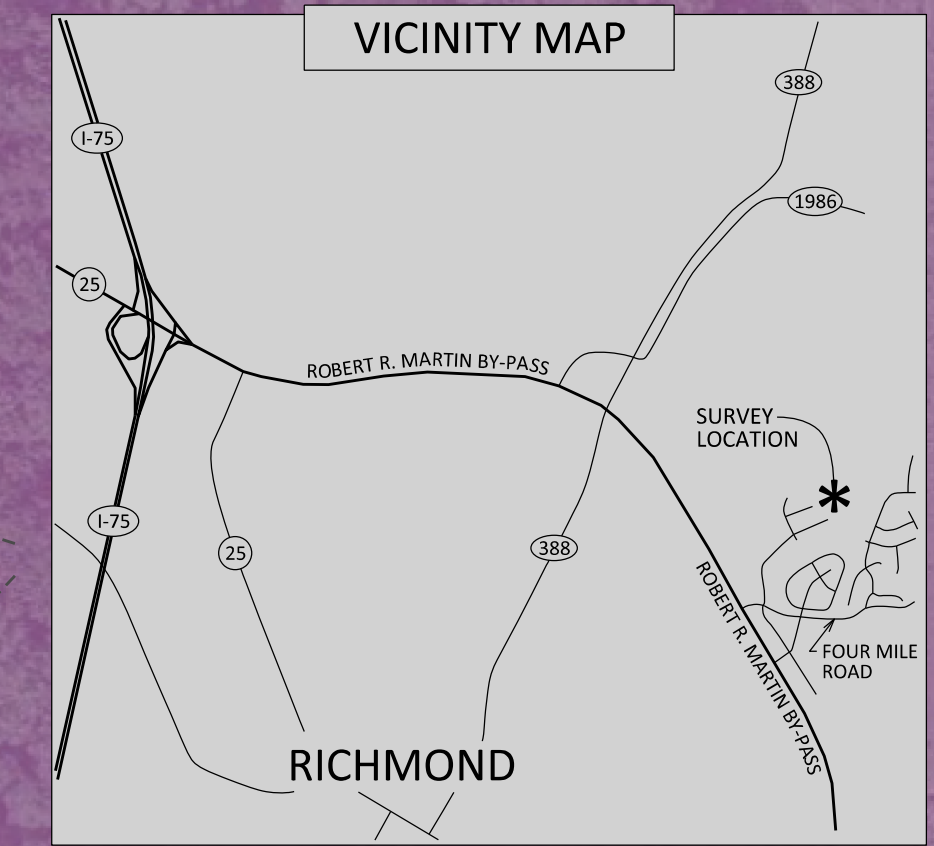
**NOTES**

- 1.) SURVEY DATUM:  
SURVEY CONTROL WAS BASED ON A KYTC VRS ENABLED GPS ROVER.  
HORIZONTAL: KENTUCKY SOUTH ZONE (NAD83)  
VERTICAL: NORTH AMERICAN VERTICAL DATUM 1988 - GEOID 12A  
ALL BEARINGS, DISTANCES, AND COORDINATES SHOWN HEREON ARE REFERENCED TO GRID NORTH OF THE KENTUCKY SOUTH ZONE STATE PLANE COORDINATE SYSTEM (NAD83).  
ALL HORIZONTAL MEASUREMENTS SHOWN HEREON ARE EXPRESSED IN US SURVEY FEET.
- 2.) THE EXISTING TERRITORIAL BOUNDARY LINES SHOWN HEREON ARE BASED UPON CASE NO. 2004-00382, DATED JANUARY 31, 2005.  
AGE ENGINEERING RECREATED AND DEPICTED THE EXISTING TERRITORIAL BOUNDARY LINES SHOWN USING THE NORTHINGS AND EASTINGS PROVIDED ON THE MAP FROM CASE NO. 2004-00382, DATED JANUARY 31, 2005.
- 3.) AGE ENGINEERING PERFORMED A FIELD SURVEY ON SEPTEMBER 4TH, 2019 TO LOCATE CORNER MONUMENTATION OF THE PLATS OF RECORD SHOWN HEREON (MONUMENTS FOUND ARE NOTED ON THIS MAP). THE PLATS SHOWN HEREON ARE OF RECORD IN THE MADISON CO. CLERKS OFFICE.
- 4.) THE PROPOSED LOTS SHOWN FOR FUTURE PHASES OF MAGNOLIA POINTE ARE PRELIMINARY AND SUBJECT TO CHANGE.  
AGE ENGINEERING WAS PROVIDED THE PRELIMINARY LOT LINES FROM SPENCER LAND SURVEYING. AGE ENGINEERING BEST FIT THE PRELIMINARY LOT LINES TO THE PLATS OF RECORD SHOWN HEREON.
- 5.) IT IS THE INTENT OF THE PROPOSED TERRITORIAL BOUNDARY LINES TO RUN COINCIDENT WITH EXISTING AND PROPOSED LOT DIVISIONS.

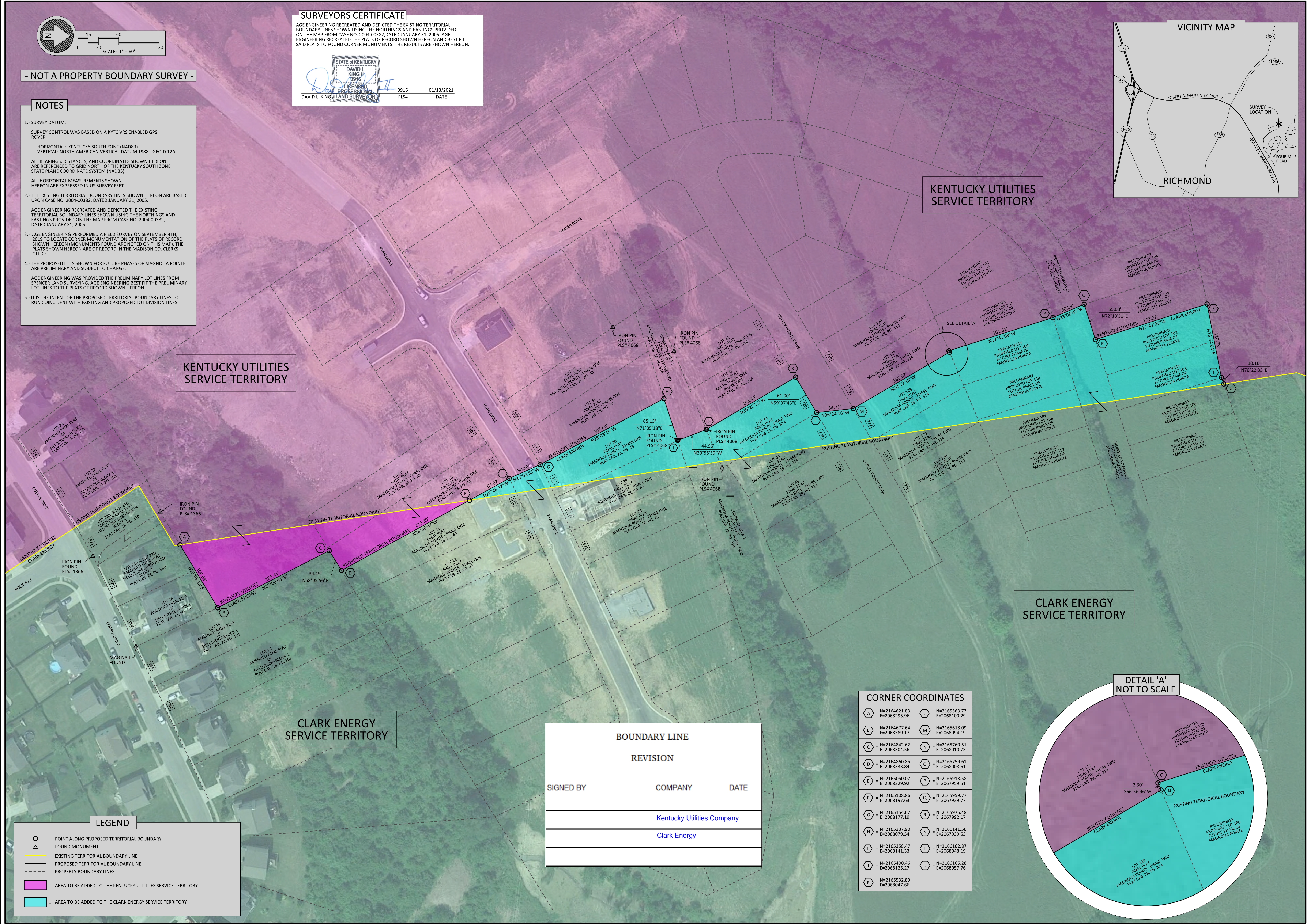
**SURVEYORS CERTIFICATE**

AGE ENGINEERING RECREATED AND DEPICTED THE EXISTING TERRITORIAL BOUNDARY LINES SHOWN USING THE NORTHINGS AND EASTINGS PROVIDED ON THE MAP FROM CASE NO. 2004-00382, DATED JANUARY 31, 2005. AGE ENGINEERING RECREATED THE PLATS OF RECORD SHOWN HEREON AND BEST FIT SAID PLATS TO FOUND CORNER MONUMENTS. THE RESULTS ARE SHOWN HEREON.

STATE OF KENTUCKY  
DAVID L. KING, II  
19916  
LICENSED PROFESSIONAL SURVEYOR  
3916 01/13/2021  
PLS# DATE



DATE: 01/13/2021  
SCALE: 1" = 60'  
DRAWN BY: DRD  
APPROVED BY: KING  
FILENAME: 19543MAP



KENTUCKY UTILITIES SERVICE TERRITORY

KENTUCKY UTILITIES SERVICE TERRITORY

CLARK ENERGY SERVICE TERRITORY

CLARK ENERGY SERVICE TERRITORY

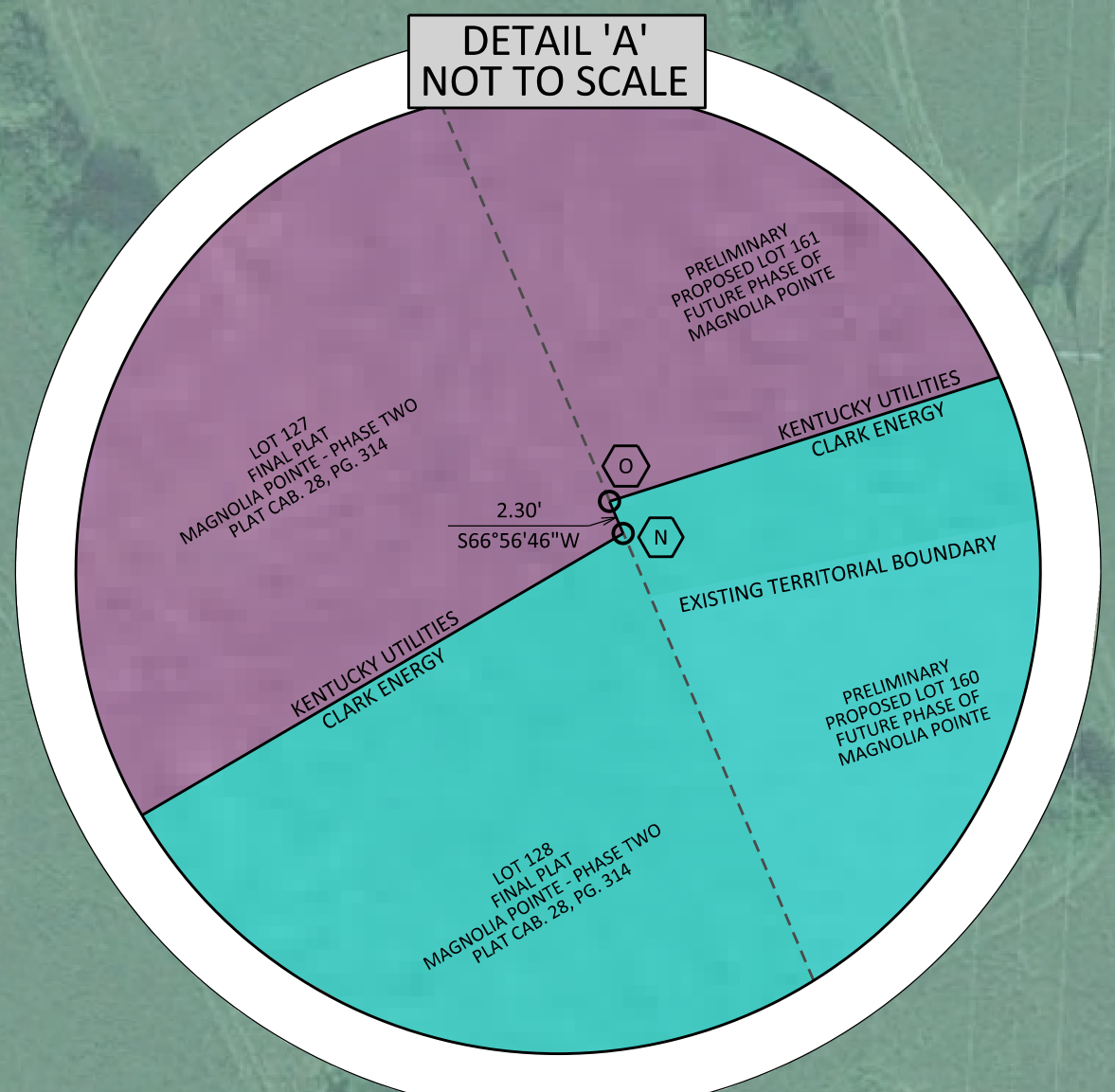
**LEGEND**

- POINT ALONG PROPOSED TERRITORIAL BOUNDARY
- △ FOUND MONUMENT
- EXISTING TERRITORIAL BOUNDARY LINE
- - - PROPOSED TERRITORIAL BOUNDARY LINE
- - - PROPERTY BOUNDARY LINES
- AREA TO BE ADDED TO THE KENTUCKY UTILITIES SERVICE TERRITORY
- AREA TO BE ADDED TO THE CLARK ENERGY SERVICE TERRITORY

BOUNDARY LINE REVISION		
SIGNED BY	COMPANY	DATE
	Kentucky Utilities Company	
	Clark Energy	

**CORNER COORDINATES**

A = N=2164621.83 E=2068295.96	L = N=2165563.73 E=2068100.29
B = N=2164677.64 E=2068389.17	M = N=2165618.09 E=2068094.19
C = N=2164842.62 E=2068504.56	N = N=2165760.51 E=2068010.73
D = N=2164860.85 E=2068333.84	O = N=2165759.61 E=2068008.61
E = N=2165050.07 E=2068229.92	P = N=2165913.58 E=2067959.51
F = N=2165108.86 E=2068197.63	Q = N=2165959.77 E=2067939.77
G = N=2165154.67 E=2068177.19	R = N=2165976.48 E=2067992.17
H = N=2165337.90 E=2068079.54	S = N=2166141.56 E=2067939.53
I = N=2165358.47 E=2068141.33	T = N=2166162.87 E=2068048.19
J = N=2165400.46 E=2068125.27	U = N=2166166.28 E=2068057.76
K = N=2165521.89 E=2068047.66	



KENTUCKY UTILITIES - CLARK ENERGY  
TERRITORIAL BOUNDARY CHANGES  
MAGNOLIA POINTE  
RICHMOND, MADISON COUNTY, KENTUCKY

P.O. BOX 204  
165 FOSTER LANE  
STANFORD, KY 40484  
PHONE (606) 365-8362  
FAX (606) 365-1097



REVISION(S)  
  
  
  
  
  
  
SHEET:  
1 OF 1