

- NOT A PROPERTY BOUNDARY SURVEY -

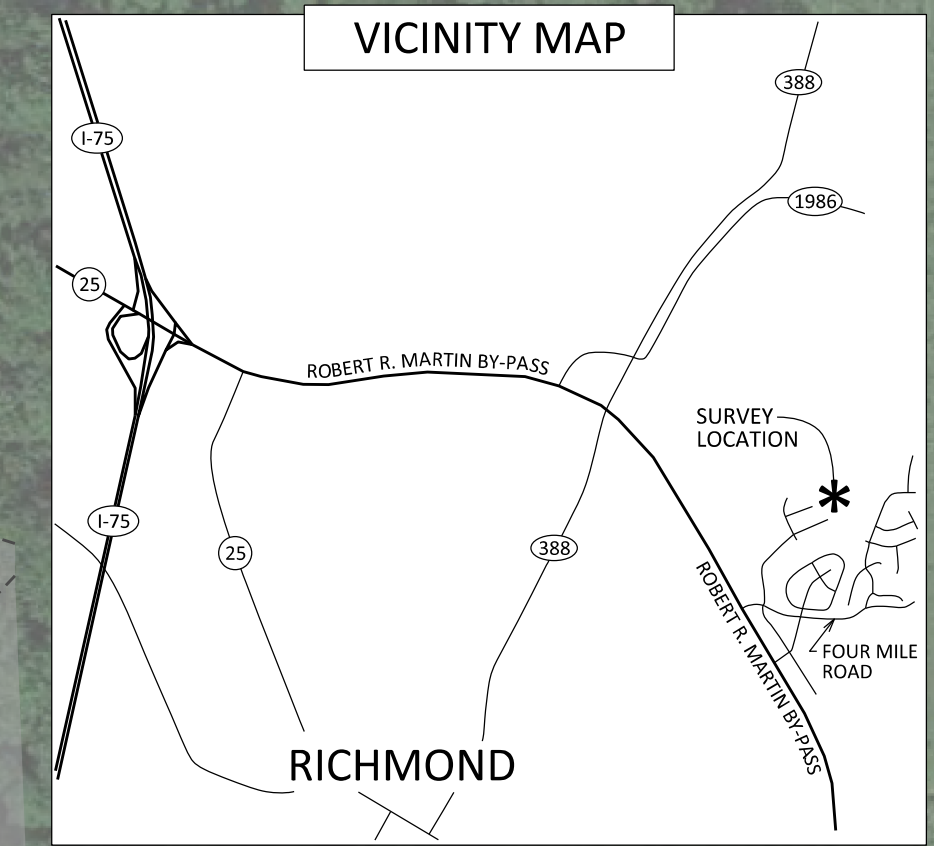
NOTES

- 1.) SURVEY DATUM:
SURVEY CONTROL WAS BASED ON A KYTC VRS ENABLED GPS ROVER.
HORIZONTAL: KENTUCKY SOUTH ZONE (NAD83)
VERTICAL: NORTH AMERICAN VERTICAL DATUM 1988 - GEOID 12A
ALL BEARINGS, DISTANCES, AND COORDINATES SHOWN HEREON ARE REFERENCED TO GRID NORTH OF THE KENTUCKY SOUTH ZONE STATE PLANE COORDINATE SYSTEM (NAD83).
ALL HORIZONTAL MEASUREMENTS SHOWN HEREON ARE EXPRESSED IN US SURVEY FEET.
- 2.) THE EXISTING TERRITORIAL BOUNDARY LINES SHOWN HEREON ARE BASED UPON MAP 31-F-4, APPROVED BY THE PUBLIC SERVICE COMMISSION ON DECEMBER 11, 1995. AGE ENGINEERING ALSO USED THE ONLINE ARC GIS MAPS (https://www.arcgis.com/home/webmap/viewer.html?webmap=111b3574f58e46639b8a97c6af565f37) TO DEFINE THE BOUNDARY OF THE EXISTING SERVICE TERRITORY.
AGE ENGINEERING RECREATED AND DEPICTED THE EXISTING TERRITORIAL BOUNDARY LINES SHOWN HEREON BY SCALING AND BEST FITTING THE PROVIDED MAP TO GEOREFERENCED AERIAL IMAGERY.
- 3.) AGE ENGINEERING PERFORMED A FIELD SURVEY ON SEPTEMBER 4TH, 2019 TO LOCATE CORNER MONUMENTATION OF THE PLATS OF RECORD SHOWN HEREON MONUMENTS FOUND ARE NOTED ON THIS MAP. THE PLATS SHOWN HEREON ARE OF RECORD IN THE MADISON CO. CLERKS OFFICE.
- 4.) THE LOT LINES SHADED IN GREY ARE PRELIMINARY AND SUBJECT TO CHANGE. THESE LINES ARE PROPOSED LOT LINES FOR FUTURE PHASES OF MAGNOLIA POINTE. NO PLATS HAVE BEEN RECORDED FOR THESE LOTS.
- 5.) IT IS THE INTENT OF THE PROPOSED TERRITORIAL BOUNDARY LINES TO RUN COINCIDENT WITH EXISTING AND PROPOSED LOT DIVISION LINES.

SURVEYORS CERTIFICATE

AGE ENGINEERING RECREATED THE TERRITORIAL BOUNDARY LINES SHOWN HEREON BASED UPON MAP 31-F-4, PROVIDED BY THE PUBLIC SERVICE COMMISSION, AND SHOWN ON ARC GIS MAP (https://www.arcgis.com/home/webmap/viewer.html?webmap=111b3574f58e46639b8a97c6af565f37). AGE ENGINEERING BEST FIT THE EXISTING TERRITORIAL BOUNDARY TO GEOREFERENCED AERIAL IMAGERY. AGE ENGINEERING RECREATED THE PLATS OF RECORD SHOWN HEREON AND BEST FIT SAID PLATS TO FOUND CORNER MONUMENTS. THE RESULTS ARE SHOWN HEREON.

STATE OF KENTUCKY
DAVID L. KING
19916
LICENSED PROFESSIONAL SURVEYOR
3916 04/13/2020
DAVID L. KING LAND SURVEYOR PLS# DATE



DATE: 04/13/2020
SCALE: 1" = 60'
DRAWN BY: DRD
APPROVED BY: KING
FILENAME: 19543MAP

KENTUCKY UTILITIES - CLARK ENERGY
TERRITORIAL BOUNDARY CHANGES
MAGNOLIA POINTE
RICHMOND, MADISON COUNTY, KENTUCKY

P.O. BOX 204
165 FOSTER LANE
STANFORD, KY 40484
PHONE (606) 365-8362
FAX (606) 365-1097



REVISION(S)

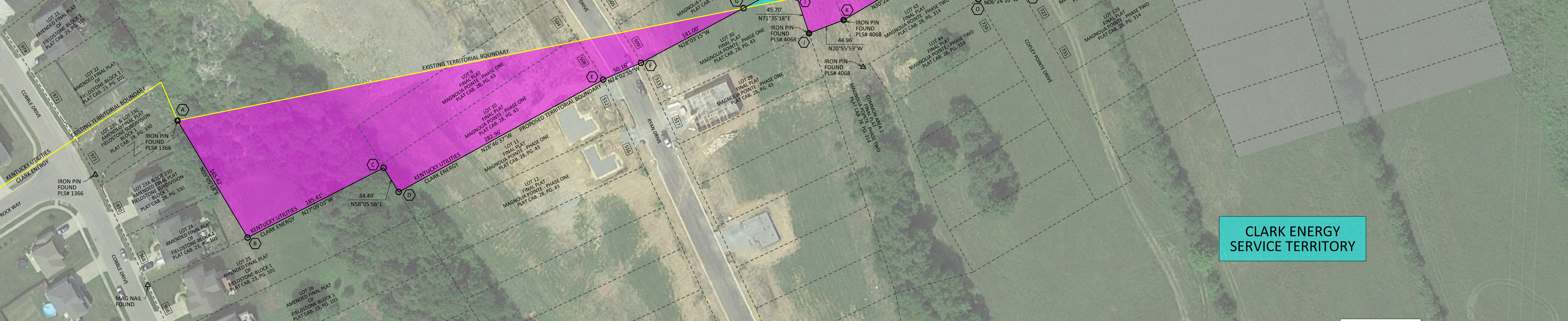
SHEET:
1 OF 1

KENTUCKY UTILITIES SERVICE TERRITORY

KENTUCKY UTILITIES SERVICE TERRITORY

CLARK ENERGY SERVICE TERRITORY

CLARK ENERGY SERVICE TERRITORY



LEGEND

- POINT ALONG PROPOSED TERRITORIAL BOUNDARY
- △ FOUND MONUMENT
- EXISTING TERRITORIAL BOUNDARY LINE
- - - PROPOSED TERRITORIAL BOUNDARY LINE
- - - PROPERTY BOUNDARY LINES
- ▨ PRELIMINARY LOTS - FUTURE PHASES OF MAGNOLIA POINTE (NO PLAT OF RECORD FOR THESE LOTS (SEE NOTE 4))
- AREA TO BE ADDED TO THE KENTUCKY UTILITIES SERVICE TERRITORY
- AREA TO BE ADDED TO THE CLARK ENERGY SERVICE TERRITORY

BOUNDARY LINE REVISION

SIGNED BY	COMPANY	DATE
	KU CO.	
	CLARK CO.	

CORNER COORDINATES

A = N=2164592.66 E=2068247.25	M = N=2165532.89 E=2068047.66
B = N=2164677.64 E=2068389.17	N = N=2165539.60 E=2068059.12
C = N=2164842.62 E=2068304.56	O = N=2165563.73 E=2068100.29
D = N=2164860.85 E=2068333.84	P = N=2165618.09 E=2068094.19
E = N=2165108.86 E=2068197.63	Q = N=2165748.88 E=2068017.54
F = N=2165154.67 E=2068177.19	R = N=2165760.51 E=2068010.73
G = N=2165270.10 E=2068110.87	S = N=2165759.61 E=2068008.61
H = N=2165337.90 E=2068079.54	T = N=2165913.58 E=2067959.51
I = N=2165344.04 E=2068097.97	U = N=2165959.77 E=2067959.77
J = N=2165358.47 E=2068141.33	V = N=2165970.53 E=2067973.51
K = N=2165400.46 E=2068125.27	W = N=2165976.48 E=2067992.17
L = N=2165499.86 E=2068067.01	X = N=2166141.56 E=2067939.53

