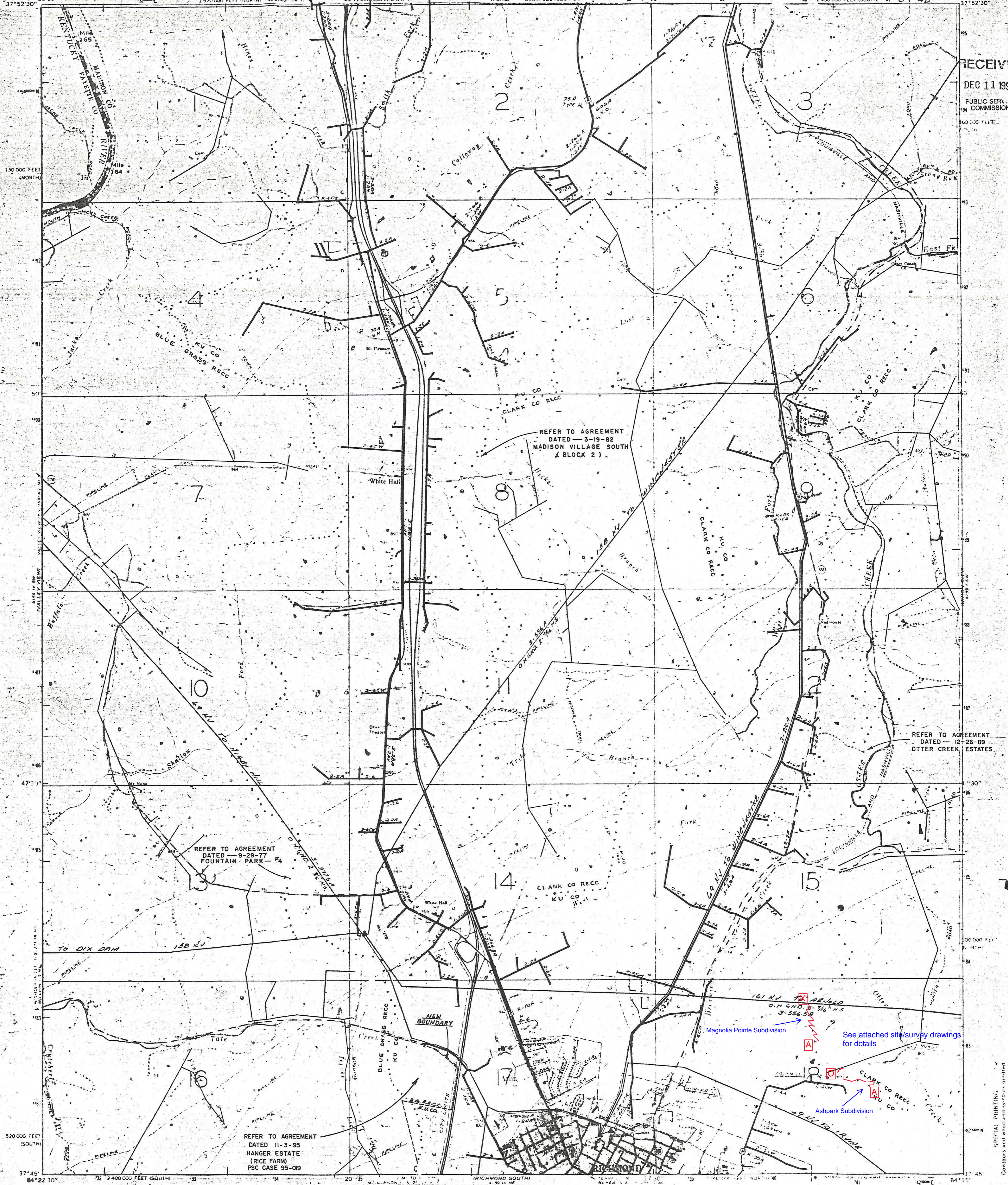


RECEIVED
DEC 11 1995
PUBLIC SERVICE
COMMISSION



ELECTRIC SERVICE AREAS - 1972	
OTHER DISTRIBUTION NEAR BOUNDARY LINE	UTILITIES INVOLVED
KU. CO. DISTRIBUTION NEAR BOUNDARY LINE	KU. CO.
BOUNDARY LINE	BLUE GRASS R.E.C.C.
	CLARK CO. R.E.C.C.
	KU. CO.
	CLARK CO. R.E.C.C.

PUBLIC SERVICE COMMISSION OF KENTUCKY	
CERTIFIED BY	
KU. CO.	<i>[Signature]</i> 11/29/95
BLUE GRASS R.E.C.C.	<i>[Signature]</i> 11/29/95
KU. CO.	<i>[Signature]</i> 12/16/95
CLARK CO. R.E.C.C.	<i>[Signature]</i> 12/16/95

ENGINEERING DIVISION
CASE NO. 95-019... DATE 11/24/95
CHECKED BY: *[Signature]*

31-F-4