

**CASE NO. 2020-00280**  
**ASHWOOD SOLAR I, LLC**  
**RESPONSES TO POST-HEARING DATA RESPONSES**

---

1. Refer to Ashwood Solar’s response to Siting Board Staff’s Second Requests for Information, Item 6. Regarding the four residential properties identified in this response, explain how Ashwood Solar intends to address the viewshed concerns of these four residential properties. Provide along with this response the map that was shown during the hearing and identify the distance to the nearest solar panel from each of these residential properties.

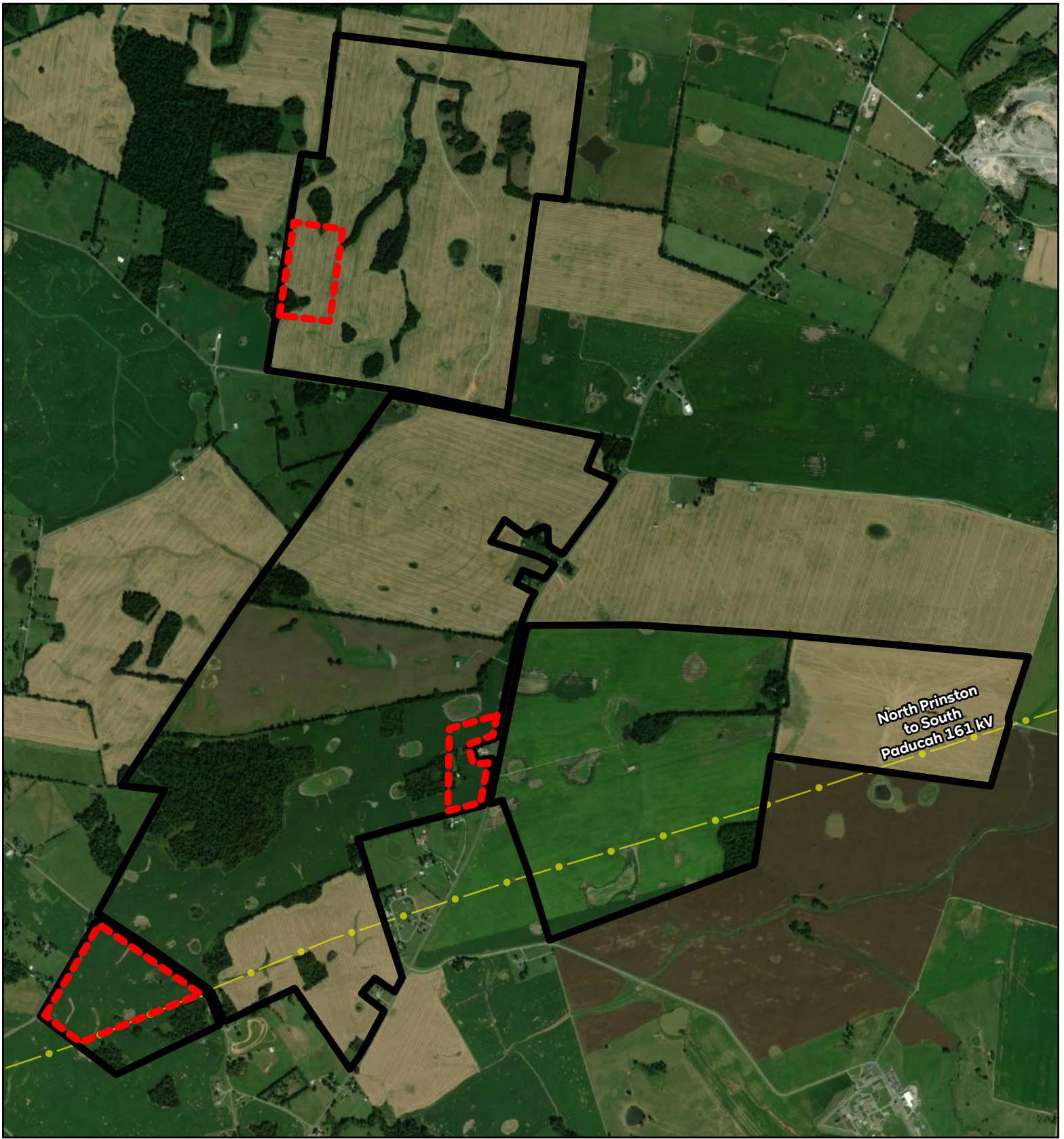
RESPONSE: As mentioned in the Ashwood Solar I LLC testimony on May 11, 2021, prior to the hearing, it was determined after further discussion the landowners that one of the four areas (Point R3 on the map showing distances) in question was no longer an issue since the rolling topography near the residence provided a natural visual buffer from the proposed location of the solar project. After proving the visual simulations, further discussions with this landowner determined that no further mitigation measures were needed, and that the landowner was satisfied with the information provided. For the remaining three areas, the Project has proposed eliminating panels from designated areas to further mitigate remaining viewshed concerns. These ‘exclusion areas’ were depicted in the map shown during the May 11 testimony.

Both the map shown during the hearing and an updated map, showing the distances as requested, have been attached for review.




WITNESS: Joshua McNeely

# PHDR 1a

## Hearing Map



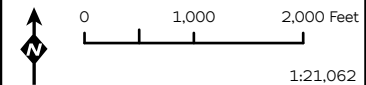
**Ashwood**  
**Lyon County, KY**

-  Transmission Line
-  Project Boundary
-  Proposed Exclusions

Map produced by RWE Renewables Americas, LLC for internal use only. Site locations are approximate. Map is not to be reproduced or redistributed without expressly written permission from RWE.



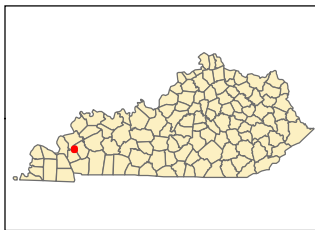
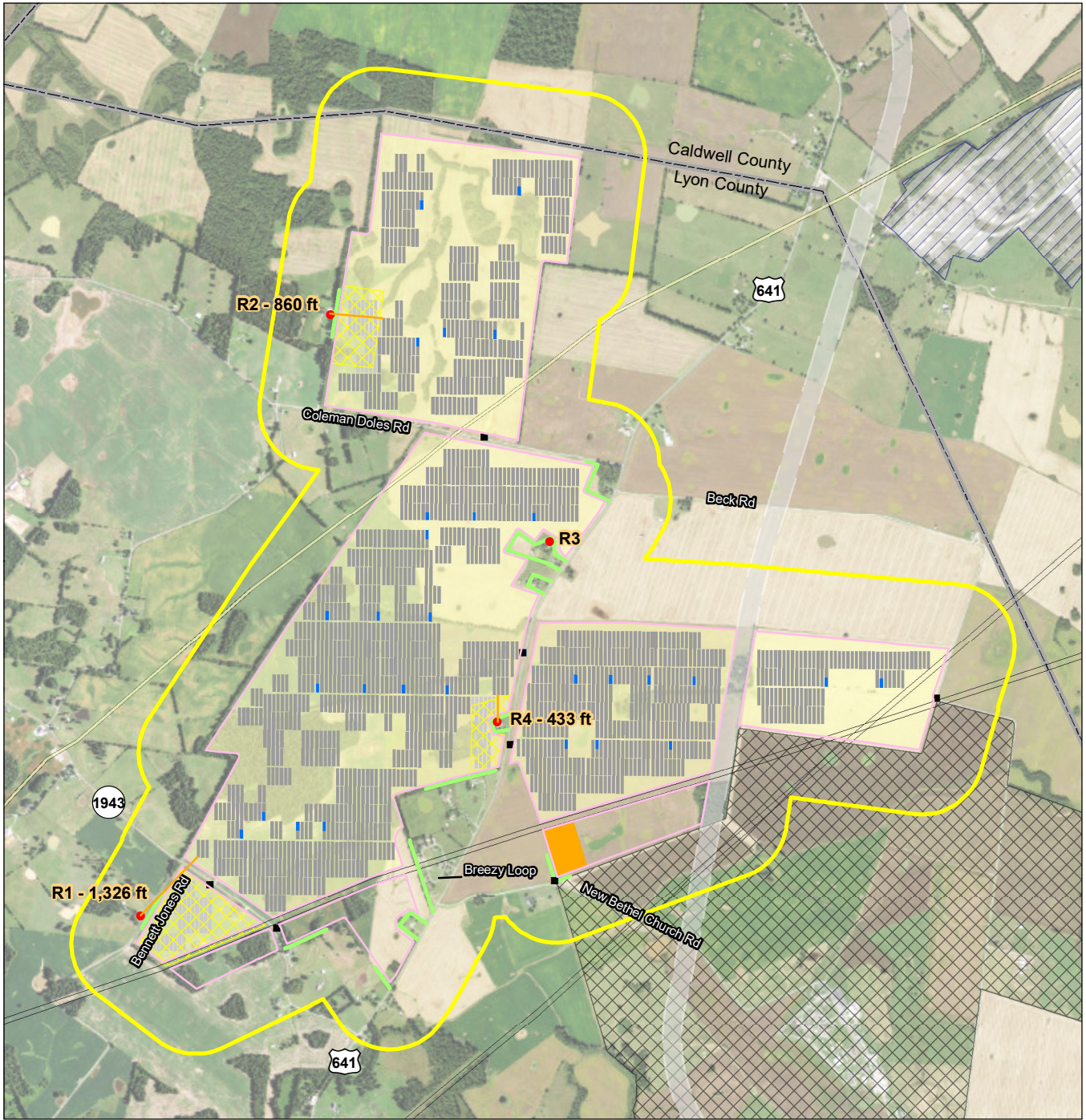
May 05, 2021  
 NAD 1983 2011 StatePlane Kentucky South  
 FIPS 1602 Ft US



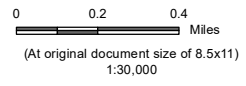
# PHDR 1b

## Updated Map

sers\acoleman\OneDrive - Stantec Office\365\PROJECTS\KY\_Solar\_Noise\mapping\ashwood\_figures2\_receptors\_revised3.mxd Revised: 2021-05-25 By: acoleman



- Legend**
- Noise Sensitive Receptors of Concern
  - 1000 ft Noise Assessment Area
  - Proposed Setbacks
  - Potential Access Points
  - Natural Gas Pipeline
  - Potential Vegetation Buffer
  - Transmission Lines
  - Fredonia Valley Quarry
  - US 641 Preliminary Preferred Alignment
  - Proposed Exclusion Areas
  - Potential Inverter Location
  - Potential PV Layout - 86MW - Revised
  - Removed from Potential PV Layout
  - Potential Project Footprint Area
  - Substation & Potential Battery Storage Location
  - Western Kentucky Correctional Complex
  - County Boundary



*Project Location*  
Lyon County, KY

Prepared by ALC on 2021-05-25  
TR by MMM on 2021-05-25  
IR Review by JA on 2021-05-25

*Client/Project*  
RWE Renewables  
Ashwood Solar Project  
Noise Assessment

172658236 REVA

*Figure No.*  
**1**

*Title*  
**Revised Distances for Post Hearing  
Data Request**

**Notes**

1. Coordinate System: NAD 1983 2011 StatePlane Kentucky South FIPS 1602 Ft US
2. Data Sources: RWE, Stantec
3. Background: 2018 USDA-NAIP-FSA Imagery - Kentucky (60cm resolution)

Disclaimer: This document has been prepared based on information provided by others as cited in the Notes section. Stantec has not verified the accuracy and/or completeness of this information and shall not be responsible for any errors or omissions which may be incorporated herein as a result. Stantec assumes no responsibility for data supplied in electronic format, and the recipient accepts full responsibility for verifying the accuracy and completeness of the data.

**CASE NO. 2020-00280**  
**ASHWOOD SOLAR I, LLC**  
**RESPONSES TO POST-HEARING DATA RESPONSES**

---

2. Regarding the noise reduction measures identified by Christi Thomas to mitigate noise generated during the pile driving process, provide additional details of the two measures described by Mrs. Thomas, i.e., the semi tractor with canvas method and the sound blankets on fence method, including the level of noise reduction that can be achieved by these two measures, if known.

RESPONSE: One of the noise reduction measures discussed during the May 11, 2021, testimony that can be implemented to dampen and/or mitigate noise generated during the pile driving process is to utilize temporary acoustic barriers during the pile installation. The attached cutsheet provides an example of the acoustic barriers, which is installed onto temporary fencing that will move with the pile drivers as they sequence their way through the installation of the piles for the racking structure foundation. According to the product's specifications provided by the manufacturer, there can be as low as 10dB noise reduction and as high as 20dB noise reduction when implemented in the field. This mitigation (or any other comparable method) would only be utilized during the pile driving construction process and not during operations or any other time of the project. The semi-truck trailer with canvas mentioned during the hearing is not described or included with this response as we do not have data on the amount of noise reduction that could be seen when implemented in the field but expect that it would be comparable to other noise reduction techniques available.

WITNESS: Kevin Macklin

# PHDR 2

# ECHO BARRIER



## ECHO BARRIER H9 & H10 NOISE CONTROL SYSTEMS

Whether you are working inside a building or outside, you can now quickly and easily protect local communities, site workers, pedestrians, students and employees from the harmful effects of excessive noise.

The Echo Barrier H2 noise barrier is the most effective temporary noise control solution on the market. Scientifically developed by our team of acoustic experts, the H2 produces best-in-class sound attenuation and absorption helping you cut noise pollution by up to 99%.

All H2 Series acoustic barriers are lightweight, weatherproof, easy to install, built to last and fire resistant to BS7837:1996. Their flexibility allows you to create the ideal solution for your work site or location, whether you're operating a construction, demolition, rail-works or public transportation site, or a live event.

### FEATURES

- Sound absorbing
- Lightweight
- Weatherproof
- Fire resistant

### BENEFITS

- Easy-Hook for quick mounting
- Reflective safety stripes







### Waterproof outer layer

Extremely durable and waterproof, highest quality PVC makes our acoustic barrier easy to clean and professional looking.



### Acoustic absorbent

Top grade lightweight acoustic absorbent made from recycled material prevents sound from reflecting off the barrier



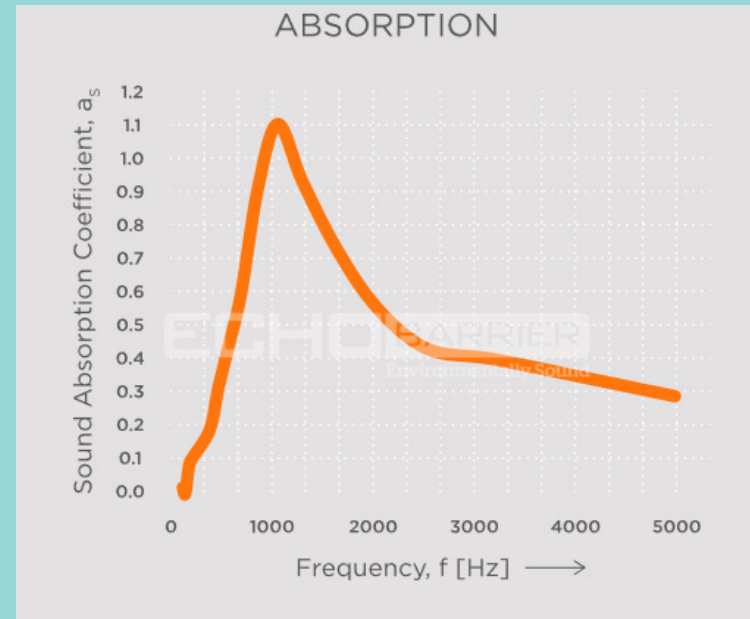
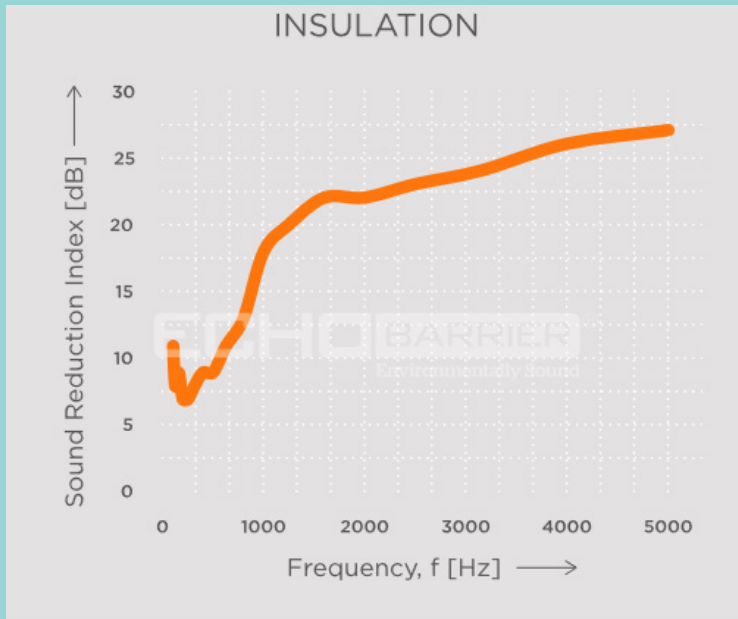
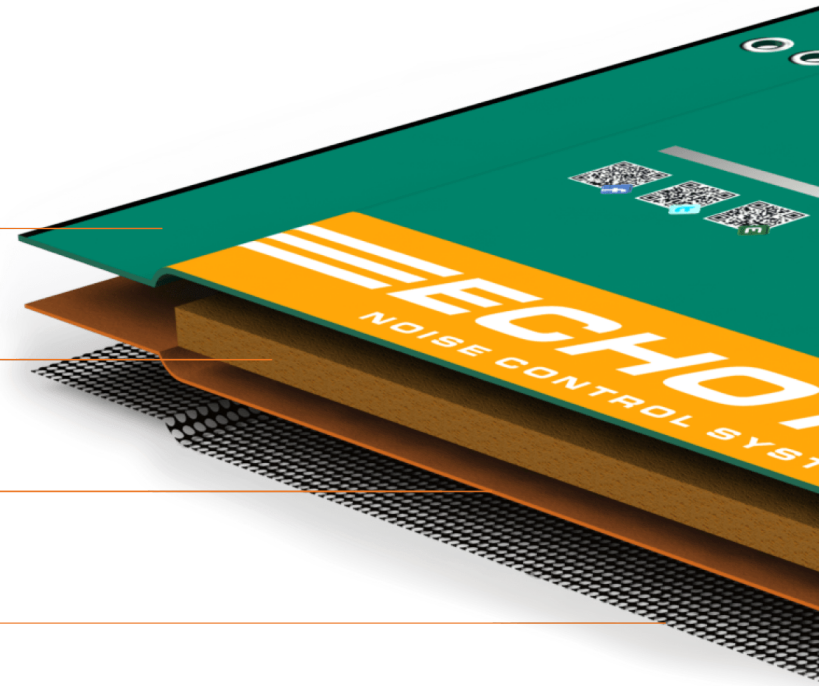
### Waterproof breathable membrane

Allows sound to be absorbed but keeps water out.



### Durable reinforced mesh

Extends product life to retain acoustic performance in harsh working environments.



# DESIGNED TO BE EASY FENCE MOUNT



## Easy Hook

Install in seconds without the need for permanent fixings



## Reflective Strips

For extra visibility at night



## Interactive Links

Get information and advice quickly



## Key Information

For safety and long product life



## Product Features



## Secure Linking

Join barriers together and to the fence



## ATTACHMENT ACCESSORIES FOR RAPID INSTALLATION

### Hooks

Our robust hooks have been designed to securely attach Echo Barrier products to most temporary fencing systems for smaller diameter fencing, simply reverse the hook. When additional noise control is needed, our barriers are designed to be double layered on the same hooks



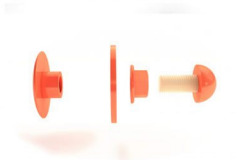
### Fitting Kit

Echo Barrier supplies the only purpose-designed acoustic barrier fitting kit on the market. Available for fencing or scaffolding, each kit contains two elastic ties and a hook: the corner of one barrier hangs on the hook of its adjoining barrier. You only need one kit per barrier



### Vertical Fitting Kit

Our vertical fitting kits allow you to hang barrier-from-barrier securely to create a vertical screen. Perfect for addressing challenges on more unusual—and difficult—projects



### Elastic Ties

Our specially designed elastic ties help you rapidly secure our barriers in place, making sure there's no acoustic leakage.



### Anti-theft Cable

Simply weave our vinyl-covered multi-strand cable through the eyes of each barrier and the fencing, and secure with a padlock through each looped end.



### Double Palm Safety Glove

Heavy-duty, reinforced gloves with extra palm and index finger fortification protect workers' hands while handling and installing our barriers.



ENDOTO CORP  
43 Franklin St East Hartford CT 06108  
[www.endotocorp.com](http://www.endotocorp.com)

## ECHO BARRIER H2 NOISE CONTROL SYSTEM

Echo Barrier enclosures provide temporary noise control for a wide range of generators, compressors and workstations. Echo barrier enclosures are lightweight, waterproof, easily assembled in a few minutes and portable enough to move with the job.

They provide temporary noise control in sensitive sites, screening generators, compressors or HVAC equipment. As a workstation they provide a safe working environment to allow the siting of cutting stations or other noise sources close to work areas.

- **Lightweight**
- **Weatherproof**
- **Fire Resistant**



INDIVIDUAL



FOLD FOR STORAGE



H2O ENCLOSURE



DEMOLITION - CONSTRUCTION



CUTTING STATION

**CASE NO. 2020-00280**  
**ASHWOOD SOLAR I, LLC**  
**RESPONSES TO POST-HEARING DATA RESPONSES**

---

3. State when Ashwood Solar will have more information on the school tax revenue requirement under an industrial revenue bond or payment in lieu of taxes.

RESPONSE: Final confirmation of the school district PILOT payment amount and structure will require adoption of an inducement bond resolution by Lyon County. The inducement resolution will approve the form of a PILOT Agreement between the County and Ashwood Solar I LLC that will establish the PILOT payments to be made by Ashwood Solar I LLC to the Lyon County School District. Further, the resolution will be required to be submitted to the Kentucky Economic Development Finance Authority (“KEDFA”) once the inducement bond resolution has been adopted by Lyon County. As stated in testimony during the May 11, 2021, hearing it is our understanding that KEDFA, specifically based on guidance from the Commissioner for Department of Financial Services is requesting that IRBs be required to maintain “full payment” of any property taxes for the local school district throughout the life of a project. It is Ashwood’s intent to adhere to the requirement and pay property taxes to the local school district in full for the life of the project under a proposed IRB.

Once the project is ready to be constructed, Lyon County will adopt an ordinance giving final approval of the bonds, but the terms of the PILOT Agreement approved in the inducement bond resolution with respect to the Lyon County School District will not be modified or changed to the School District’s detriment.

WITNESS: Joshua McNeely