

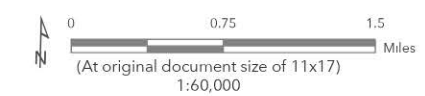
Figure No.
1

Title
Project Buffers Map

Client/Project
Golden Solar Project

Project Location
Caldwell County, Kentucky

- Project Area
 - Schools
 - + Hospitals
 - Residences
 - Railway
 - Fencing
 - Access Roads
 - Residential Communities
 - Solar Panels
- Buffer Distance**
- 1000 Ft
 - 2000 Ft
 - 1 Mile
 - 2 Miles



Notes

1. Coordinate System: StatePlane Kentucky FIPS 1600 Feet
2. Basemap Sources: Esri, NASA, NGA, USGS, FEMA, Esri, HERE, Garmin, SafeGraph, GeoTechnologies, Inc, METI/NASA, USGS, EPA, NPS, USDA, Sources: Esri, USGS



Path: K:\Project_Data\Geonimo\Golden\Projects\Map\Golden.aprx Revised: 8/22/2022 By: leonard.luz

Disclaimer: This map and all data contained within are supplied as is with no warranty. Cardno Inc. expressly disclaims responsibility for damages or liability from any claims that may arise out of the use or misuse of this map. It is the sole responsibility of the user to determine if the data on this map meets the user's needs. This map was not created as survey data, nor should it be used as such. It is the user's responsibility to obtain proper survey data, prepared by a licensed surveyor, where required by law.

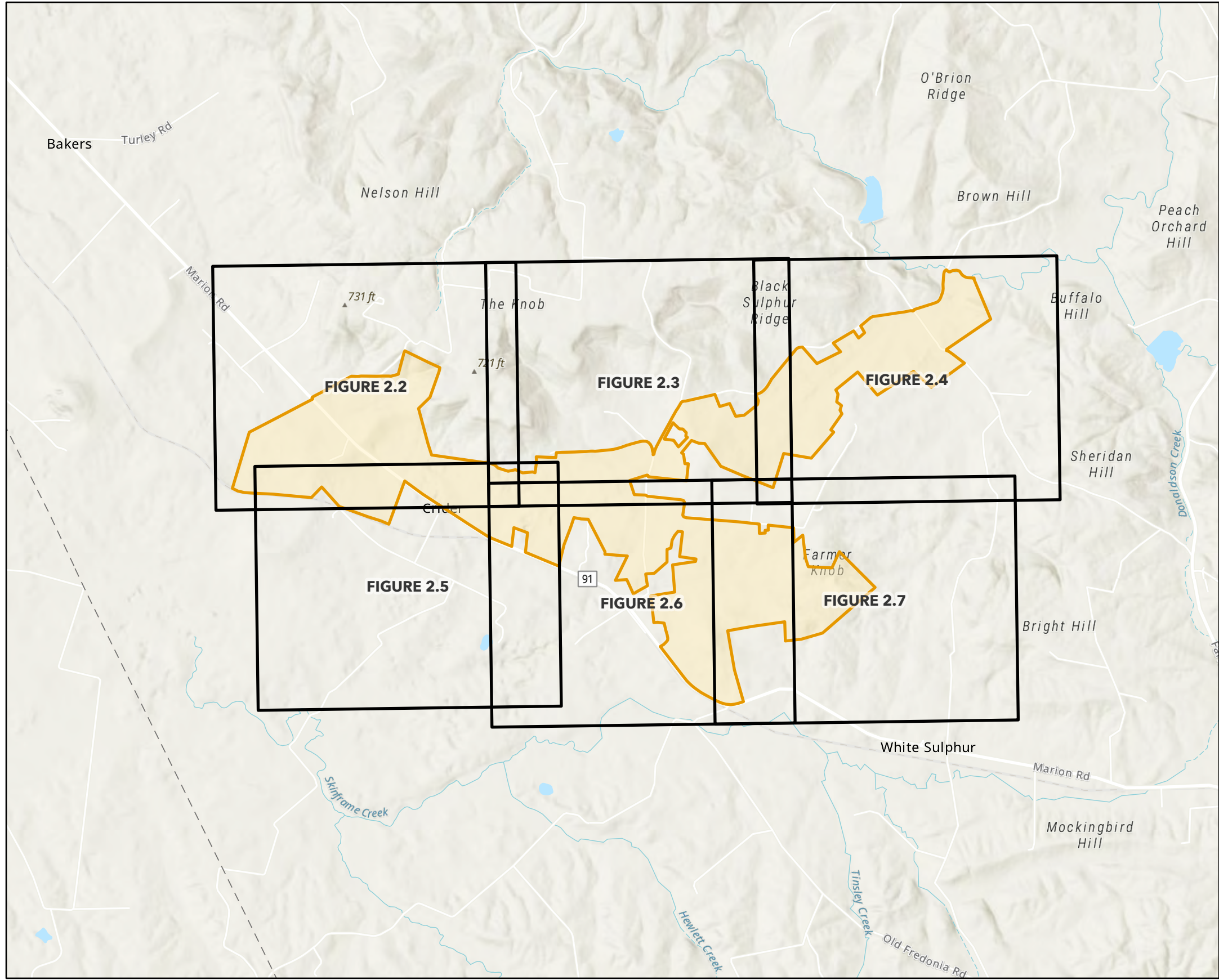


Figure No.
2.1

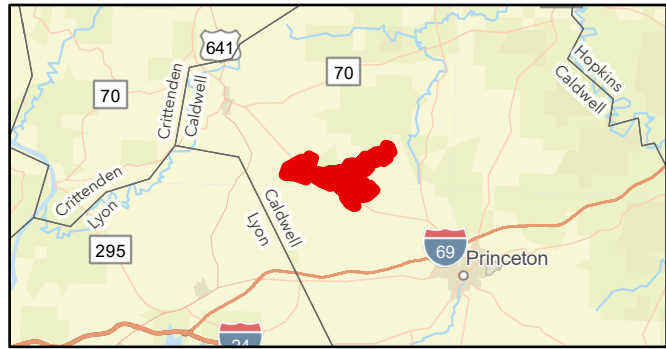
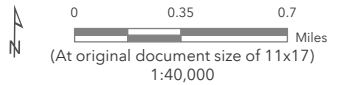
Title
Project Layout Map Key

Client/Project E320201200

Golden Solar Project

Project Location
Caldwell County, Kentucky

-  Project Area
-  Map Page



Notes
 1. Coordinate System: NAD 1983 2011 StatePlane Kentucky FIPS 1600 Ft US
 2. Background Source: Esri, NASA, NGA, USGS, FEMA, Esri, HERE, Garmin, SafeGraph, GeoTechnologies, Inc, METI/NASA, USGS, EPA, NPS, USDA, Esri, HERE, Garmin, SafeGraph, FAO, METI/NASA, USGS, EPA, NPS



Path: K:\Project_Data\Geronimo\Golden\Project\Mxds\Golden.aprx Revised: 6/17/2022 By: leonard.luz



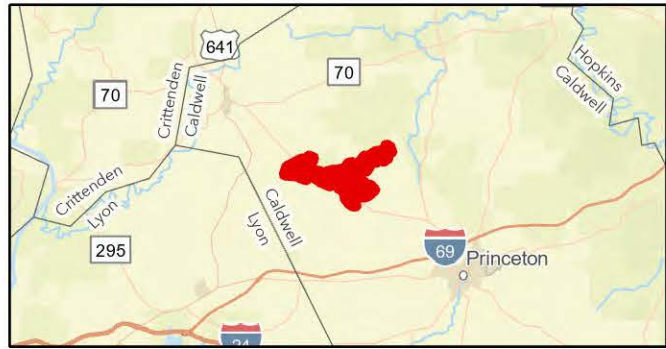
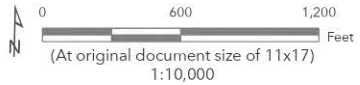
Figure No.
2.2

Title
Project Layout Map

Client/Project
Golden Solar Project

Project Location
Caldwell County, Kentucky

- Project Area
- Residence
- Business
- Church
- + Railroad



Notes
 1. Coordinate System: NAD 1983 2011 StatePlane Kentucky FIPS 1600 Ft US
 2. Background Source: Esri, HERE, Garmin, SafeGraph, FAO, METI/NASA, USGS, EPA, NPS, Maxar



Path: K:\Project_Data\Geonimo\Golden\Projects\MapDocs\Golden.aprx Revised: 8/10/2022 By: leonard.luz



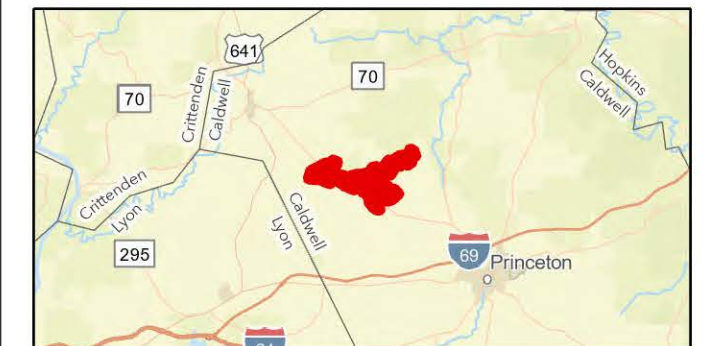
Figure No.
2.3

Title
Project Layout Map

Client/Project
Golden Solar Project

Project Location
Caldwell County, Kentucky

- Project Area
- Residence
- Church



Notes
 1. Coordinate System: NAD 1983 2011 StatePlane Kentucky FIPS 1600 Ft US
 2. Background Source: Esri, HERE, Garmin, SafeGraph, FAO, METI/NASA, USGS, EPA, NPS, Maxar



Path: K:\Project_Data\Geonimo\Golden\Projects\Mxd\Golden.aprx Revised: 8/10/2022 By: leonard.luz



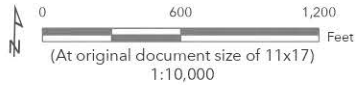
Figure No.
2.4

Title
Project Layout Map

Client/Project
Golden Solar Project

Project Location
Caldwell County, Kentucky

- Project Area
- Residence



- Notes**
1. Coordinate System: NAD 1983 2011 StatePlane Kentucky FIPS 1600 Ft US
 2. Background Source: Esri, HERE, Garmin, SafeGraph, FAO, METI/NASA, USGS, EPA, NPS, Maxar



Path: K:\Project_Data\Geronimo\Golden\Projects\Mxds\Golden.aprx Revised: 8/10/2022 By: leonard.luz



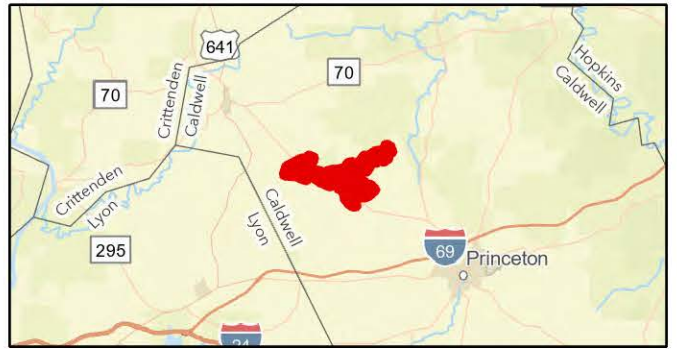
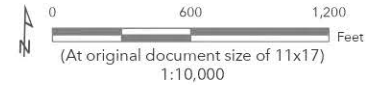
Figure No.
2.5

Title
Project Layout Map

Client/Project
Golden Solar Project

Project Location
Caldwell County, Kentucky

- Project Area
- Residence
- Business
- +— Railroad



Notes
 1. Coordinate System: NAD 1983 2011 StatePlane Kentucky FIPS 1600 Ft US
 2. Background Source: Esri, HERE, Garmin, SafeGraph, FAO, METI/NASA, USGS, EPA, NPS, Maxar



Path: K:\Project_Data\Geonimo\Golden\Projects\Mxds\Golden.aprx Revised: 8/10/2022 By: leonard.luz

Path: K:\Project_Data\Geonimo\Golden\Projects\Mxd\Golden.aprx
Revised: 8/10/2022 By: leonard.luz

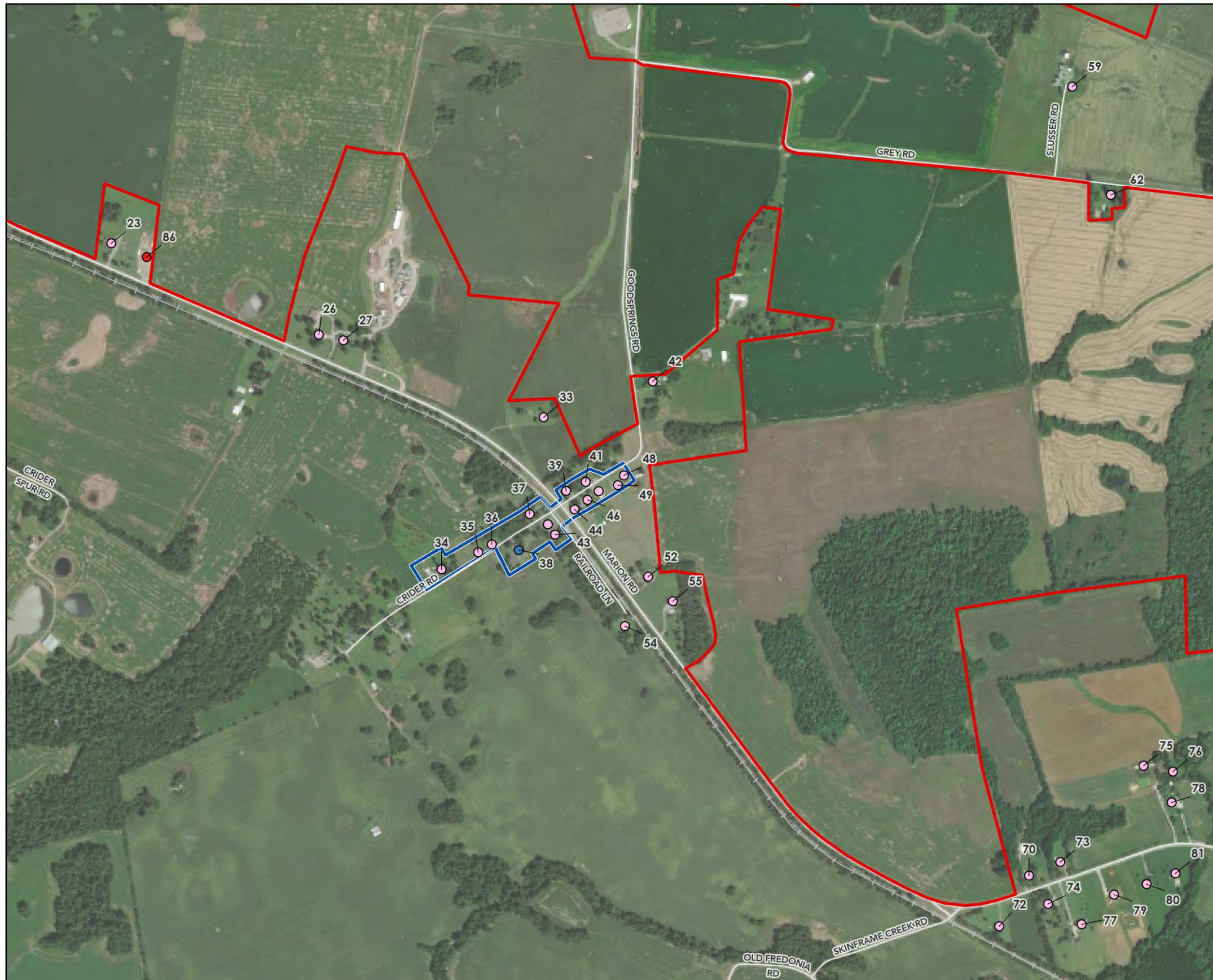

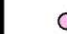






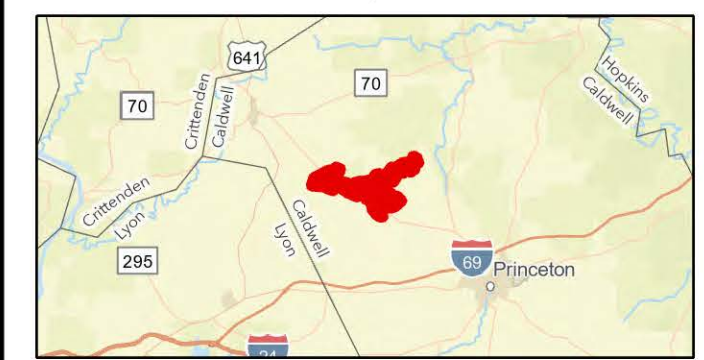
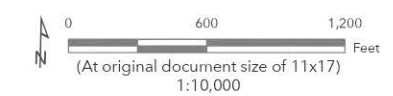
Figure No.
2.6

Title
Project Layout Map

Client/Project
Golden Solar Project

Project Location
Caldwell County, Kentucky

-  Project Area
-  Residence
-  Business
-  Church
-  Railroad
-  Residential Communities



Notes
1. Coordinate System: NAD 1983 2011 StatePlane Kentucky FIPS 1600 Ft US
2. Background Source: Esri, HERE, Garmin, SafeGraph, FAO, METI/NASA, USGS, EPA, NPS, Maxar



Path: K:\Project_Data\Geonimo\Golden\Projects\Mxd\Golden.aprx Revised: 8/10/2022 By: leonard.luz

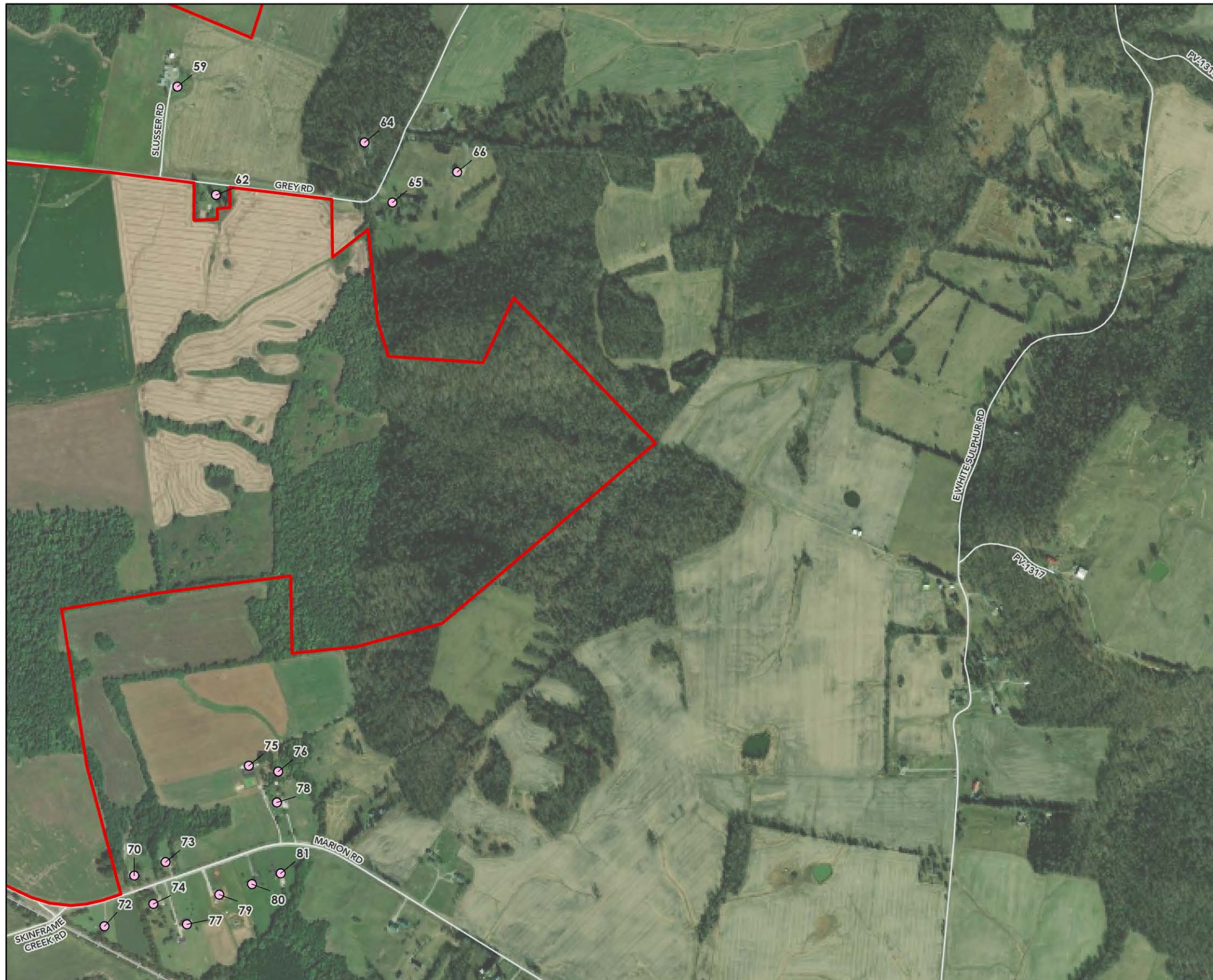


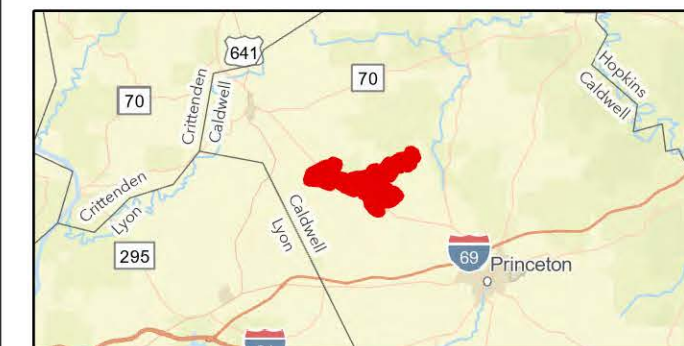
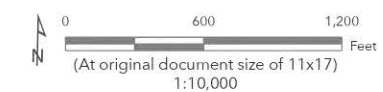
Figure No.
2.7

Title
Project Layout Map

Client/Project
Golden Solar Project

Project Location
Caldwell County, Kentucky

- Project Area
- Residence
- Railroad



Notes
 1. Coordinate System: NAD 1983 2011 StatePlane Kentucky FIPS 1600 Ft US
 2. Background Source: Esri, HERE, Garmin, SafeGraph, FAO, METI/NASA, USGS, EPA, NPS, Maxar





Figure No.
3

Title
Property Owners

Client/Project
Golden Solar Project

Project Location
Caldwell County, Kentucky

 Project Area
 Property Boundary



Notes
1. Coordinate System: StatePlane Kentucky FIPS 1600 Feet
2. Basemap Sources: Maxar



Path: K:\Project_Data\Geonimo\Golden\Projects\Kxds\Golden.aprx Revised: 8/23/2022 By: leonard.luz

Disclaimer: This map and all data contained within are supplied as is with no warranty. Cardno Inc. expressly disclaims responsibility for damages or liability from any claims that may arise out of the use or misuse of this map. It is the sole responsibility of the user to determine if the data on this map meets the user's needs. This map was not created as survey data, nor should it be used as such. It is the user's responsibility to obtain proper survey data, prepared by a licensed surveyor, where required by law.