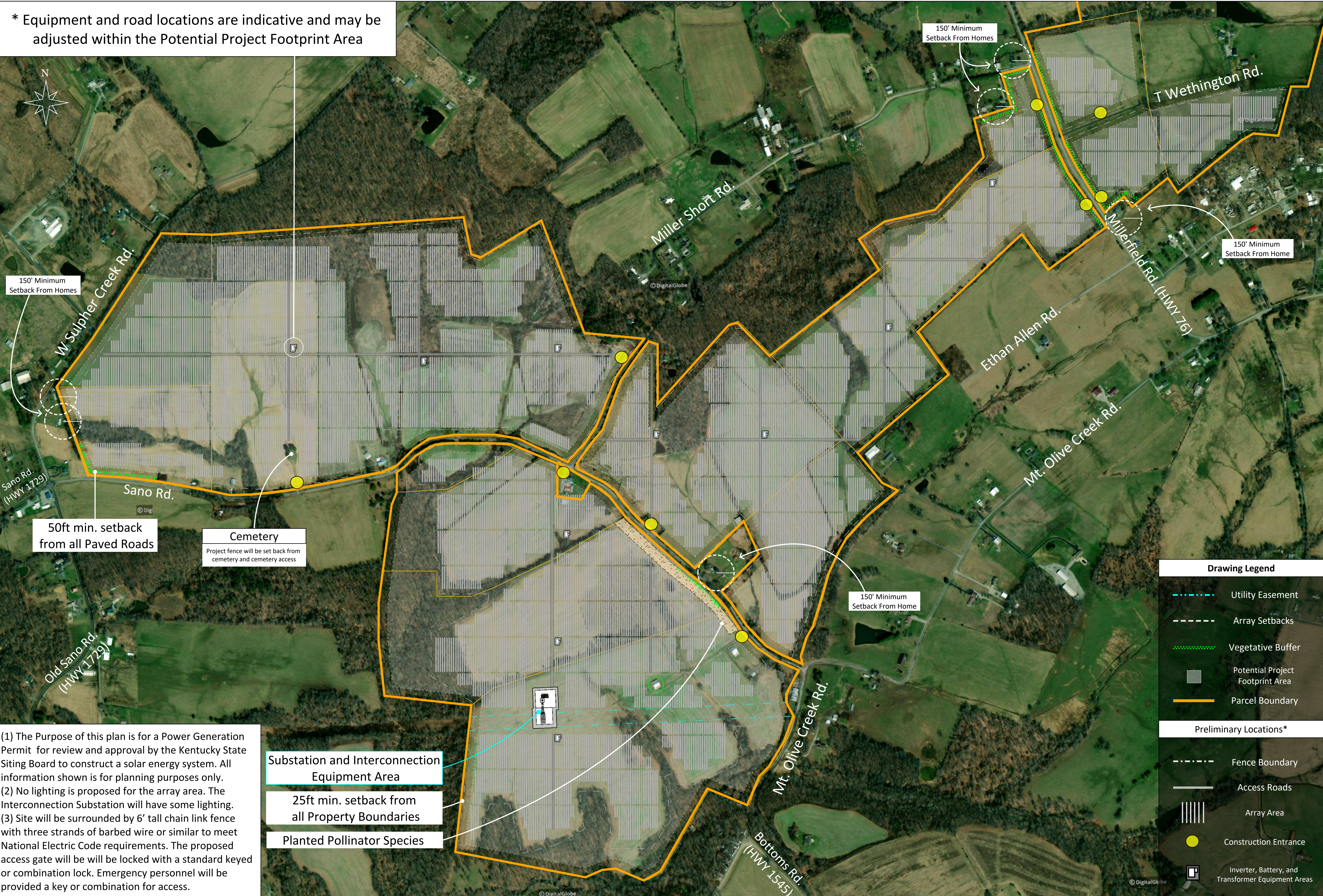






\* Equipment and road locations are indicative and may be adjusted within the Potential Project Footprint Area



(1) The Purpose of this plan is for a Power Generation Permit for review and approval by the Kentucky State Siting Board to construct a solar energy system. All information shown is for planning purposes only.  
 (2) No lighting is proposed for the array area. The Interconnection Substation will have some lighting.  
 (3) Site will be surrounded by 6' tall chain link fence with three strands of barbed wire or similar to meet National Electric Code requirements. The proposed access gate will be will be locked with a standard keyed or combination lock. Emergency personnel will be provided a key or combination for access.

**Substation and Interconnection Equipment Area**  
 25ft min. setback from all Property Boundaries  
 Planted Pollinator Species

Drawing Legend	
	Utility Easement
	Array Setbacks
	Vegetative Buffer
	Potential Project Footprint Area
	Parcel Boundary
Preliminary Locations*	
	Fence Boundary
	Access Roads
	Array Area
	Construction Entrance
	Inverter, Battery, and Transformer Equipment Areas

**Carolina Solar Energy**  
 400 W Main St  
 Durham, NC 27701  
 Suite 503

**Mt Olive Creek Farm**  
 60 MWAC

**ISSUE**  
 05.14.21  
 05.04.21  
 04.29.21  
 09.23.20  
 08.21.20

**PROJECT**  
 Mt Olive Creek

**DRAWN BY**  
 CJ

**DESCRIPTION**  
 Array Layout