

A

B

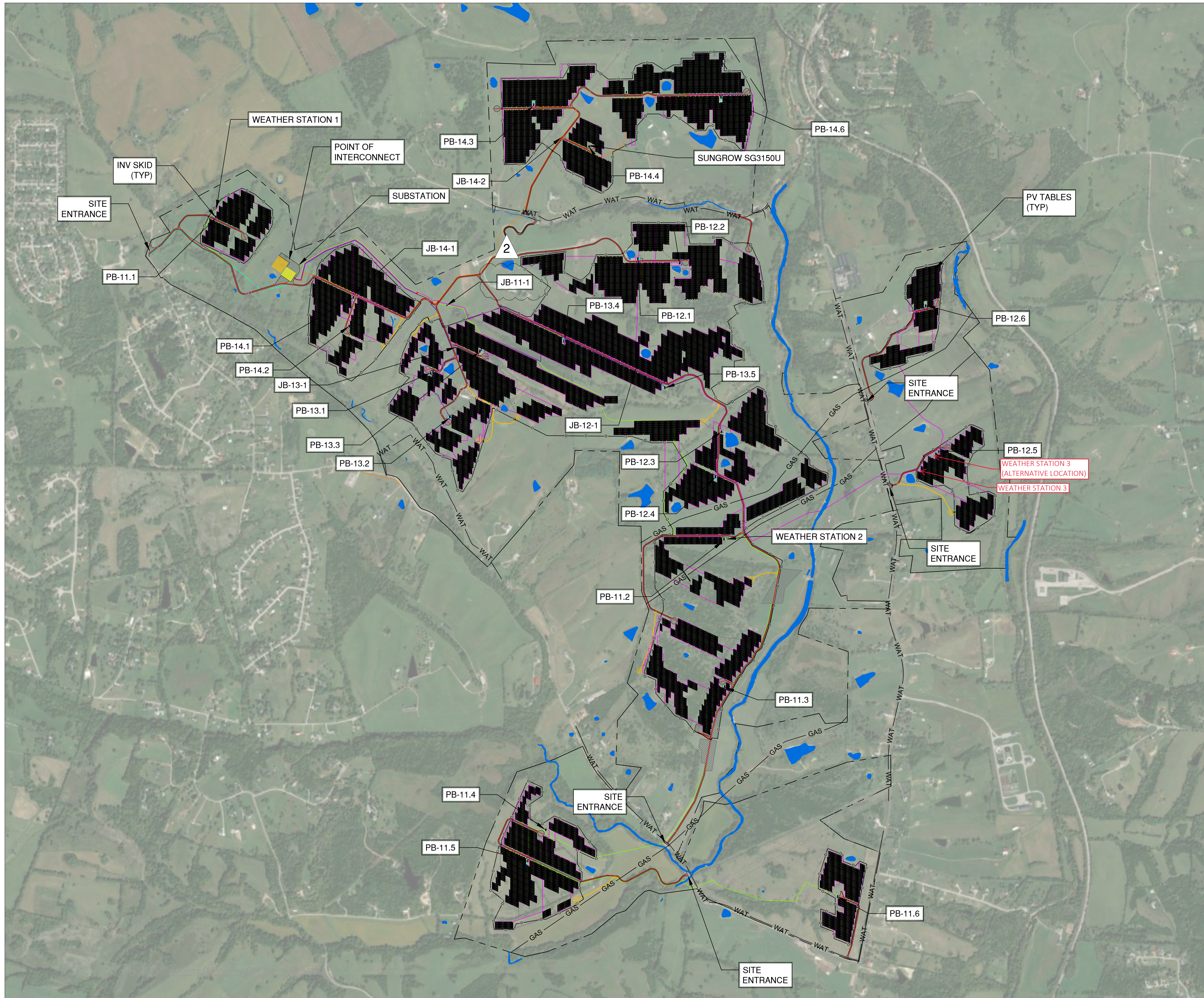
C

D

E

F

6
5
4
3
2
1



MADISON SOLAR PROJECT			
INTERCONNECTION VOLTAGE	138 kV		
GEN-TIE LENGTH	150 FEET		
DC/AC RATIO AT POI	1.25		
DESIGN HIGH TEMP	34°C		
DESIGN MINIMUM TEMP	-13°C		
INVERTERS	(35) INGETEAM INGECON SUN 3000TL C630 3.274KVA @30C, (1) SUNGROW SG3150U 3150KVA @45C		
INVERTER SKIDS	(9) 1-INVERTER INGETEAM SKID, (13) 2-INVERTER INGETEAM SKIDS, (1) 1-INVERTER SUNGROW SKID		
TRANSFORMERS	(9) 3600 kVA, (13) 7200 kVA, (1) 3150 kVA		
SYSTEM SIZE (AC-POI)	100.0 MW		
RACKING TYPE	SUNFOLDING SAT 40% GCR, 18.69° PITCH ±45° RANGE OF MOTION		
RACKING QUANTITIES	(8,565) 1 STRING TRACKERS		
MODULE TYPE	JA	JA	TOTAL
MODULES (MOD)	(71,118) JA JAM72S30- 539/MR	(160,137) JA JAM72S30- 540/MR	(231,255) TOTAL MODS
SYSTEM SIZE (DC-STC)	38.048 MW	86.474 MW	124.522 MW
STRINGING (STG)	(27) MOD/STG; (2,634) STGS	(27) MOD/STG; (5,931) STGS	(8,565) TOTAL STRINGS
MAX STRING VOC (NEC CALC)	1405.98 V	1410.47 V	N/A

LEGEND	
	PROJECT BOUNDARIES
	SUBSTATION
	POWER BLOCK OUTLINES
	PROJECT ROAD
	TEMPORARY ROAD
	FENCE
	FO FIBER OPTIC LINES
	OHP OVERHEAD POWER LINES
	GAS ABOVE GROUND GAS PIPELINES
	GAS UNDERGROUND GAS PIPELINES
	WAT UNDERGROUND WATER LINE
	WATER FEMA LINE
	SAS SAS COMMUNICATIONS & POWER
	AC FEEDER 11
	AC FEEDER 12
	AC FEEDER 13
	AC FEEDER 14
	STATION SERVICE
	WEATHER WIRING
	WEATHER STATION
	CALIBRATED MODULE
	1 STRING BLOCK
	SUNFOLDING SUPPLY AIR SYSTEM (SAS)
	MV CROSSING

NO.	DATE	CHK.	ISSUED FOR CONSTRUCTION		ISSUED FOR CONSTRUCTION		ISSUED FOR CONSTRUCTION		REVISES WEATHER STATION INSTALLATION
			DWN.	NFB.	SLH.	NFB.	SLH.	AGF.	
0	12/17/2021								
1	02/04/2022								
2	07/08/2022								
3	05/31/2023								

MADISON SOLAR PROJECT
MADISON COUNTY, KENTUCKY

OVERALL SITE PLAN

OWNER

PRIMARY CONTRACTOR

SECONDARY CONTRACTOR

THIS SHALL NOT BE CONSIDERED A CERTIFIED DOCUMENT

DRAWN BY S. HARTMAN	CHECKED BY N. BARNES
APPROVED BY A. MELVIN	QA/QC BY D. O'ROURKE
DATE 02/04/2022	SCALE NTS
JOB NO. R21.00106	DWG NO.

C02245_P_ULI_EN_LYT_ELE_200000001

SHEET NO. **1**

