

MONTHLY WATER LOSS REPORT

Farmdale Water District
Case No. 2020-00217

July 2023

PUBLIC SERVICE COMMISSION

Monthly Water Loss Report

Water Utility: Farmdale Water District

For the Month of: July Year: 2023

LINE #	ITEM	GALLONS (Omit 000's)
1	WATER PRODUCED AND PURCHASED	
2	Water Produced	
3	Water Purchased	16,386,300
4	TOTAL PRODUCED AND PURCHASED	16,386,300
5		
6	WATER SALES	
7	Residential	9,833,800
8	Commercial	2,401,600
9	Industrial	500
10	Bulk Loading Stations	
11	Wholesale	
12	Public Authorities	
13	Other Sales (explain)	
14	TOTAL WATER SALES	12,235,900
15		
16	OTHER WATER USED	
17	Utility and/or Water Treatment Plant	
18	Wastewater Plant	
19	System Flushing	58,500
20	Fire Department	9,400
21	Other Usage (explain) DBP Flushing	6700
22	TOTAL OTHER WATER USED	74,600
23		
24	WATER LOSS	
25	Tank Overflows	
26	Line Breaks	
27	Line Leaks	
28	Excavation Damages	
29	Theft	
30	Other Loss (explain) Unknown Loss	4,075,800
31	TOTAL WATER LOSS	4,075,800
32		
33	Note: Line 14 + Line 22 + Line 31 MUST Equal Line 4	
34		
35	WATER LOSS PERCENTAGE	
36	(Line 31 divided by Line 4)	24.87%

SURCHARGE ACTIVITY REPORT

Farmdale Water District
Case No. 2020-00217

Reporting Period: August 2023

Surcharge Billings: \$8,241.00. 2,747 customers were billed \$3.00 each on August 11, 2023. Please see the attached highlighted billing summary.

Surcharge Collections: \$7,737.46. Farmdale collected \$7,737.46 of surcharges during the month of August. This entire amount was transferred on September 8, 2023 into Farmdale's surcharge bank account named "FWD Water Loss Surcharge Account." A copy of the check and deposit slip is attached, as well as the surcharge bank statement showing the account balance as of August 31, 2023.

Surcharge Disbursements: None.

PKTR Temp-Return Service Requested

Direct inquiries to:
502 696-0720

Community Trust Bank, Inc.
1205 US Highway 127 S
Frankfort KY 40601-4329

005714 0.4500 AV 0.498 TR00019
FWD WATER LOSS SURCHARGE ACCOUNT
100 HIGHWOOD DR
FRANKFORT KY 40601-9701



0

Summary of Account Balance

Account	Number	Ending Balance
INTEREST BEARING CHECKING		\$266,793.54

INTEREST BEARING CHECKING

Date	Description	Additions	Subtractions	Balance
07-31	Beginning balance			\$259,084.81
08-09	#Deposit	7,663.80		266,748.61
08-31	#Interest	44.93		266,793.54
08-31	Ending totals	7,708.73	.00	\$266,793.54

Annual percentage yield earned 0.20%
Interest-bearing days 31
Average balance for APY \$264,523.63
Interest earned \$44.93

FORM NO. CTB 101



DEPOSIT TICKET

DATE 9-8-23

NAME FWD Water Loss Surcharge Acct

EXPLANATION _____

DEPOSITS MAY NOT BE AVAILABLE FOR IMMEDIATE WITHDRAWAL

USER ID _____

CUSTOMER SIGNATURE FOR CASH BACK
ACCOUNT NUMBER _____

CASH	CURRENCY		
	COIN		
LIST CHECKS SINGLY		7737	46
TOTAL			
LESS CASH RECEIVED			

*

NET DEPOSIT \$

7737.46

FARMDALE WATER DISTRICT
 GENERAL ACCOUNT
 DONALD MORSE, TREASURER
 100 HIGHWOOD DR. FRANKFORT, KY 40601



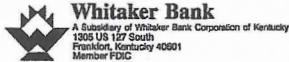
73-416/421

DATE 9-8-23

PAY TO THE ORDER OF

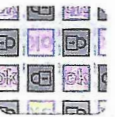
FWD Water Loss Surcharge Account \$ 7737.46

Seven thousand seven hundred thirty-seven - 46/100 DOLLARS



FOR _____

Grone Poole
Scott Waldhuse



Service	Rate	Number Active	Number Inactive	Charges	Arrears	Total	Usage	Adjustment Amount	Adjusted Total
SW SEWER	04 Sewer Cons.	2	1	\$69.81	\$65.64	\$135.45	6,500		
Surcharge 1	05 Loss Reduction	2	1	\$6.00	\$0.00	\$6.00			
Local Tax	01 School Tax	2	1	\$1.73	\$0.00	\$1.73			
Penalty	01 Penalty	4	2	\$12.75	\$0.00	\$12.75			
***** Route 0018 *****									
WT WATER	01 Residential 3/4"	46	5	\$1,194.93	\$635.40	\$1,830.33	113,300		
	21 Commercial 3/4"	2	0	\$39.38	\$0.00	\$39.38	0		
		48	5	\$1,234.31	\$635.40	\$1,869.71	113,300		
SW SEWER	04 Sewer Cons.	47	5	\$1,432.71	\$1,800.37	\$3,233.08	113,300		
Surcharge 1	05 Loss Reduction	48	5	\$144.00	\$0.00	\$144.00			
Local Tax	01 School Tax	47	5	\$36.38	\$0.00	\$36.38			
State Tax	01 Sales Tax	2	0	\$2.44	\$0.00	\$2.44			
Penalty	01 Penalty	95	10	\$266.79	\$0.00	\$266.79			
Overpayment		10	0	\$0.00	(\$289.81)	(\$289.81)			
***** Summary For All Routes *****									
WT WATER	01 Residential 3/4"	2,540	127	\$85,306.60	\$35,808.82	\$121,115.42	9,375,100		
	02 Residential 1"	50	0	\$3,652.16	\$898.77	\$4,550.93	407,500		
	11 Res. 3/4" W/trailer	4	0	\$232.39	\$130.78	\$363.17	26,200		
	12 Res. 1" W/1-trailer	2	0	\$194.00	\$0.00	\$194.00	18,300		
	13 Res 3/4" W/2-trailer	2	0	\$123.28	\$0.00	\$123.28	6,700		
	21 Commercial 3/4"	125	1	\$4,953.09	\$1,354.43	\$6,307.52	483,400		
	22 Commercial 1"	23	0	\$4,126.34	\$1,691.06	\$5,817.40	565,000		
	23 Stewart Home	3	0	\$8,290.95	\$0.00	\$8,290.95	1,346,000		
	31 1 Trailer 3/4"	3	0	\$59.07	\$0.00	\$59.07			
	32 2 Trailers 3/4"	1	0	\$39.38	\$0.00	\$39.38			
	34 Four Apts	1	0	\$78.76	\$0.00	\$78.76	7,200		
		2,754	128	\$107,056.02	\$39,883.86	\$146,939.88	12,235,400		
SW SEWER	01 Residential	194	18	\$11,558.00	\$8,370.45	\$19,928.45	604,400		
	02 Residential	255	28	\$15,279.00	\$11,794.43	\$27,073.43	811,800		
	03 Residential	461	30	\$28,282.50	\$19,363.68	\$47,646.18	1,599,700		
	04 Sewer Cons.	380	23	\$13,951.25	\$10,389.53	\$24,340.78	1,202,100		
	05 Residential	40	5	\$2,295.50	\$1,876.25	\$4,171.75	107,100		
	06 Commercial -cons	59	0	\$5,989.70	\$305.05	\$6,294.75	505,700		
	07 Residential	120	1	\$7,585.00	\$141.47	\$7,726.47	461,000		
	08 Comerical-cons	1	0	\$50.00	\$0.00	\$50.00			
	09 Comerical-cons	1	0	\$150.00	\$0.00	\$150.00			
		1,511	105	\$85,140.95	\$52,240.86	\$137,381.81	5,291,800		
SV Service Ch	01 Reconnect Fee	0	1	\$0.00	\$33.34	\$33.34			
	04 Post Office	1	7	\$0.78	\$4.56	\$5.34			
	05 Disconnect Fee	0	1	\$0.00	\$50.00	\$50.00			
		1	9	\$0.78	\$87.90	\$88.68			
Surcharge 1	05 Loss Reduction	2,747	99	\$8,241.00	\$0.00	\$8,241.00			
Surcharge 2	06 911 fee	44	0	\$185.24	\$0.00	\$185.24			

Billing 7/7/23 — 8/4/23

Service	Rate	Number Active	Number Inactive	Charges	Arrears	Total	Usage	Adjustment Amount	Adjusted Total
Local Tax	01 School Tax	2,753	128	\$3,210.28	\$0.00	\$3,210.28			
State Tax	01 Sales Tax	128	1	\$934.02	\$0.00	\$934.02			
Penalty	01 Penalty	4,265	233	\$19,221.45	\$0.00	\$19,221.45			
Overpayment		474	3	\$0.00	(\$22,290.61)	(\$22,290.61)			
Report Totals				\$223,989.74	\$69,922.01	\$293,911.75	17,527,200		

Service Type	Rate Code	Adjustments	Payments	Deposit Receipts	Applied Deposits	Bad Debt Writeoffs	Applied Unapp Csh
WT Commercial 3/4"	21	-\$19.69	-\$1,879.64	\$0.00	\$0.00	\$0.00	-\$19.69
WT Commercial 1"	22	\$0.00	-\$831.01	\$0.00	\$0.00	\$0.00	-\$24.34
WT 1 Trailer 3/4"	31	\$0.00	-\$59.07	\$0.00	\$0.00	\$0.00	\$0.00
WT 2 Trailers 3/4"	32	\$0.00	-\$39.38	\$0.00	\$0.00	\$0.00	\$0.00
WT WATER Totals		-\$444.76	-\$101,977.03	\$0.00	\$0.00	\$0.00	-\$6,487.98
SW Residential	01	-\$49.50	-\$11,722.99	\$0.00	\$0.00	\$0.00	-\$154.00
SW Residential	02	-\$289.50	-\$15,553.52	\$0.00	\$0.00	\$0.00	-\$279.52
SW Residential	03	-\$22.00	-\$28,481.71	\$0.00	\$0.00	\$0.00	-\$449.12
SW Sewer Cons.	04	-\$165.39	-\$16,110.36	\$0.00	\$0.00	\$0.00	-\$609.21
SW Residential	05	\$0.00	-\$2,391.46	\$0.00	\$0.00	\$0.00	-\$95.10
SW Commercial -cons	06	\$0.00	-\$1,526.40	\$0.00	\$0.00	\$0.00	\$0.00
SW Residential	07	\$0.00	-\$7,835.85	\$0.00	\$0.00	\$0.00	-\$293.40
SW SEWER Totals		-\$526.39	-\$83,622.29	\$0.00	\$0.00	\$0.00	-\$1,880.35
SV Post Office	04	-\$0.62	\$0.00	\$0.00	\$0.00	\$0.00	\$0.00
SV Service Charge Totals		-\$0.62	\$0.00	\$0.00	\$0.00	\$0.00	\$0.00
Surcharge 1 Loss	05	-\$24.00	-\$7,461.46	\$0.00	\$0.00	\$0.00	-\$463.53
Surcharge 1 Totals		-\$24.00	-\$7,461.46	\$0.00	\$0.00	\$0.00	-\$463.53
Surcharge 2 911 fee	06	-\$3.03	-\$168.16	\$0.00	\$0.00	\$0.00	-\$8.54
Surcharge 2 Totals		-\$3.03	-\$168.16	\$0.00	\$0.00	\$0.00	-\$8.54
Local Tax School Tax	01	-\$12.63	-\$3,143.67	\$0.00	\$0.00	\$0.00	-\$127.45
Local Tax Totals		-\$12.63	-\$3,143.67	\$0.00	\$0.00	\$0.00	-\$127.45
State Tax Sales Tax	01	-\$1.22	-\$104.92	\$0.00	\$0.00	\$0.00	\$0.00
State Tax Totals		-\$1.22	-\$104.92	\$0.00	\$0.00	\$0.00	\$0.00
Penalty Penalty	01	-\$1,015.55	-\$4,296.06	\$0.00	\$0.00	\$0.00	\$0.00
Penalty Totals		-\$1,015.55	-\$4,296.06	\$0.00	\$0.00	\$0.00	\$0.00
Total W/O Unapp Cash		-\$2,028.20	-\$200,773.59	\$0.00	\$0.00	\$0.00	-\$8,967.85
Cust Unapp Cash		\$23.91	-\$9,937.64	\$0.00	\$0.00	\$0.00	\$8,967.85
R Residential All Routes Totals		-\$2,004.29	-\$210,711.23	\$0.00	\$0.00	\$0.00	\$0.00
<i>Collections for August 2023</i>							
Route All Customer Type All							
WT Residential 3/4"	01	-\$425.07	-\$94,693.61	\$0.00	\$0.00	\$0.00	-\$6,180.36
WT Residential 1"	02	\$0.00	-\$3,951.29	\$0.00	\$0.00	\$0.00	-\$263.59
WT Res. 3/4" W/trailer	11	\$0.00	-\$325.61	\$0.00	\$0.00	\$0.00	\$0.00
WT Res. 1" W/1-trailer	12	\$0.00	-\$188.86	\$0.00	\$0.00	\$0.00	\$0.00
WT Res 3/4" W/2-trailer	13	\$0.00	-\$147.50	\$0.00	\$0.00	\$0.00	\$0.00
WT Commercial 3/4"	21	-\$5,908.69	-\$4,357.23	\$0.00	\$0.00	\$0.00	-\$213.27
WT Commercial 1"	22	\$0.00	-\$4,109.31	\$0.00	\$0.00	\$0.00	-\$416.52
WT Stewart Home	23	\$0.00	-\$10,673.67	\$0.00	\$0.00	\$0.00	\$0.00
WT 1 Trailer 3/4"	31	\$0.00	-\$59.07	\$0.00	\$0.00	\$0.00	\$0.00
WT 2 Trailers 3/4"	32	\$0.00	-\$39.38	\$0.00	\$0.00	\$0.00	\$0.00
WT Four Apts	34	\$0.00	-\$117.66	\$0.00	\$0.00	\$0.00	\$0.00
WT WATER Totals		-\$6,333.76	-\$118,663.19	\$0.00	\$0.00	\$0.00	-\$7,073.74
SW Residential	01	-\$49.50	-\$11,847.72	\$0.00	\$0.00	\$0.00	-\$154.00
SW Residential	02	-\$289.50	-\$15,553.52	\$0.00	\$0.00	\$0.00	-\$279.52
SW Residential	03	-\$22.00	-\$28,591.71	\$0.00	\$0.00	\$0.00	-\$449.12
SW Sewer Cons.	04	-\$165.39	-\$16,388.52	\$0.00	\$0.00	\$0.00	-\$609.21
SW Residential	05	\$0.00	-\$2,391.46	\$0.00	\$0.00	\$0.00	-\$95.10
SW Commercial -cons	06	-\$10,674.49	-\$6,751.37	\$0.00	\$0.00	\$0.00	-\$89.20
SW Residential	07	\$0.00	-\$7,835.85	\$0.00	\$0.00	\$0.00	-\$293.40

Service Type	Rate Code	Adjustments	Payments	Deposit Receipts	Applied Deposits	Bad Debt Writeoffs	Applied Unapp Csh
SW Comerical-cons	08	\$0.00	-\$117.04	\$0.00	\$0.00	\$0.00	-\$50.00
SW Comerical-cons	09	\$0.00	-\$150.00	\$0.00	\$0.00	\$0.00	\$0.00
SW SEWER Totals		-\$11,200.88	-\$89,627.19	\$0.00	\$0.00	\$0.00	-\$2,019.55
SV Post Office	04	-\$0.62	\$0.00	\$0.00	\$0.00	\$0.00	\$0.00
SV Service Charge Totals		-\$0.62	\$0.00	\$0.00	\$0.00	\$0.00	\$0.00
Surcharge 1 Loss	05	-\$24.00	-\$7,737.46	\$0.00	\$0.00	\$0.00	-\$487.53
Surcharge 1 Totals		-\$24.00	-\$7,737.46	\$0.00	\$0.00	\$0.00	-\$487.53
Surcharge 2 911 fee	06	-\$3.03	-\$168.16	\$0.00	\$0.00	\$0.00	-\$8.54
Surcharge 2 Totals		-\$3.03	-\$168.16	\$0.00	\$0.00	\$0.00	-\$8.54
Local Tax School Tax	01	-\$189.30	-\$3,648.90	\$0.00	\$0.00	\$0.00	-\$145.84
Local Tax Totals		-\$189.30	-\$3,648.90	\$0.00	\$0.00	\$0.00	-\$145.84
State Tax Sales Tax	01	-\$365.16	-\$1,079.06	\$0.00	\$0.00	\$0.00	-\$11.94
State Tax Totals		-\$365.16	-\$1,079.06	\$0.00	\$0.00	\$0.00	-\$11.94
Penalty Penalty	01	-\$1,015.55	-\$4,379.73	\$0.00	\$0.00	\$0.00	\$0.00
Penalty Totals		-\$1,015.55	-\$4,379.73	\$0.00	\$0.00	\$0.00	\$0.00
Total W/O Unapp Cash		-\$19,132.30	-\$225,303.69	\$0.00	\$0.00	\$0.00	-\$9,747.14
Cust Unapp Cash		\$15.84	-\$10,277.02	\$0.00	\$0.00	\$0.00	\$9,747.14
All Customer Types All Routes Totals		-\$19,116.46	-\$235,580.71	\$0.00	\$0.00	\$0.00	\$0.00