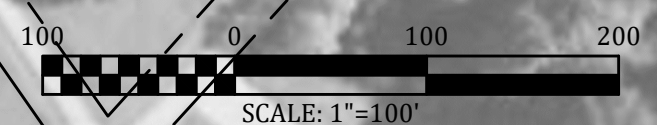


REFERENCE NOTES:

- 1. BORTH BARBARA A & ROBERT A - DB-293 PG.-350
- 2. BORTH BARBARA A & ROBERT A - DB-293 PG.-350
- 3. WARDMAN MARGARET (DOLPH) - DB-180 PG.-528
- 4. TRABITS SYLVIA JEAN - DB-167 PG.-618
- 5. FENTRESS GEORGE JR FAMILY LLC - DB-310 PG.-137
- 6. WOODRIGE DANIEL R - DB-361 PG.-129
- 7. MARREN JOHN P & INGA N - DB-391 PG.-023
- 8. COX ALMA R REVOCABLE LIVING TRUST - DB-340 PG.-093
- 9. FENTRESS GEORGE JR FAMILY LLC - DB-310 PG.-137
- 10. WOODRIGE DANIEL R - DB-361 PG.-129
- 11. MARREN JOHN P & INGA N - DB-391 PG.-023
- 12. COX ALMA R REVOCABLE LIVING TRUST - DB-340 PG.-093
- 13. HODGE JAMES G - DB-375 PG.-134
- 14. HODGE JAMES G - DB-406 PG.-069
- 15. FENTRESS GEORGE JR FAMILY LLC - DB-310 PG.-137
- 16. FENTRESS GEORGE JR FAMILY LLC - DB-310 PG.-137
- 17. FENTRESS GEORGE JR FAMILY LLC - DB-310 PG.-137
- 18. FENTRESS GEORGE JR FAMILY LLC - DB-310 PG.-137
- 19. HODGE JAMES G - DB-375 PG.-134
- 20. HODGE JAMES G - DB-406 PG.-069
- 21. FENTRESS GEORGE JR FAMILY LLC - DB-310 PG.-137
- 22. FENTRESS GEORGE JR FAMILY LLC - DB-310 PG.-137
- 23. FENTRESS GEORGE JR FAMILY LLC - DB-310 PG.-137
- 24. KHUN PETER K - DB-282 PG.-518
- 25. KHUN PETER K - DB-300 PG.-387
- 26. KHUN NANCY GILMER - DB-287 PG.-418
- 27. SMITH LUCINDA - DB-475 PG.-295
- 28. CANNON STEVE - DB-475 PG.-027
- 29. CITY OF LITCHFIELD - DB-093 PG.-177
- 30. CITY OF LITCHFIELD - DB-404 PG.-312
- 31. CANNON ROBERT & MELANIE J - DB-440 PG.-299
- 32. SMITH LUCINDA - DB-475 PG.-295
- 33. CANNON ROBERT STEVEN - DB-352 PG.-209
- 34. JACKIE ERIC T & TAMMIE G - DB-462 PG.-125
- 35. SIMS THOMAS S & SUZANNE E - DB-463 PG.-449
- 36. FORWITH KEITH D & SUSAN M TRUSTEES - DB-440 PG.-158
- 37. FORWITH KEITH D & SUSAN M TRUSTEES - DB-456 PG.-447
- 38. SIMS THOMAS S & SUZANNE E - DB-463 PG.-449
- 39. FORWITH MEGAN - DB-462 PG.-168
- 40. FORWITH MEGAN - DB-462 PG.-168
- 41. FORWITH KEITH D & SUSAN M TRUSTEES - DB-440 PG.-158
- 42. FORWITH KEITH D & SUSAN M TRUSTEES - DB-440 PG.-158
- 43. FORWITH KEITH D & SUSAN M TRUSTEES - DB-390 PG.-653
- 44. FORWITH KEITH D & SUSAN M TRUSTEES - DB-390 PG.-653
- 45. FORWITH KEITH D & SUSAN M TRUSTEES - DB-462 PG.-165
- 46. FORWITH KEITH D & SUSAN M TRUSTEES - DB-390 PG.-653
- 47. CARTER CHARLES KEITH - DB-440 PG.-054
- 48. FORWITH KEITH D & SUSAN M TRUSTEES - DB-390 PG.-653
- 49. US GOVERNMENT



P:\PROJECTS\Grayson County Water District\18021-East - West Interconnect PH 1\DWG\18021-PETERCAVE-7-8.dwg KEG 3/09/20

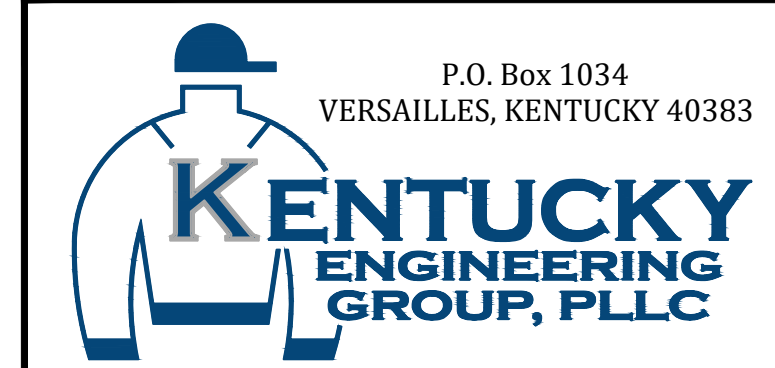


IT IS A VIOLATION OF LAW FOR ANY PERSON TO ALTER THIS DRAWING WITHOUT WRITTEN PERMISSION FROM KENTUCKY ENGINEERING GROUP, PLLC AND ACTING UNDER THE DIRECTION OF A LICENSED ENGINEER.

THIS DRAWING WAS PREPARED AT THE SCALE INDICATED. INACCURACIES IN THE STATED SCALE MAY BE INTRODUCED WHEN DRAWINGS ARE REPRODUCED BY ANY MEANS. USE THE GRAPHIC SCALE BAR IN THE DRAWING OR TITLE BLOCK TO DETERMINE THE ACTUAL SCALE.

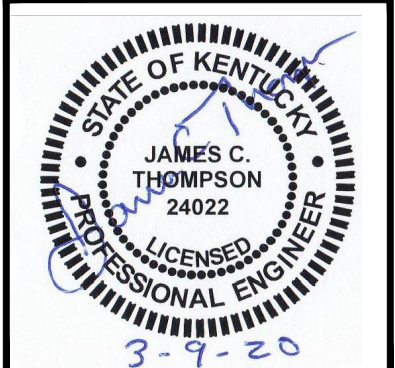
NO.	DATE	REVISIONS	BY

DATE:	MAY 2019
PROJECT MGR:	RET
DRAWN BY:	JAB
CHECKED BY:	JCT
SCALE:	AS NOTED
2019 © Kentucky Engineering Group, PLLC	



GRAYSON COUNTY WATER DISTRICT
EAST - WEST
INTERCONNECT PROJECT

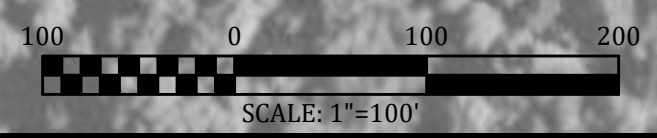
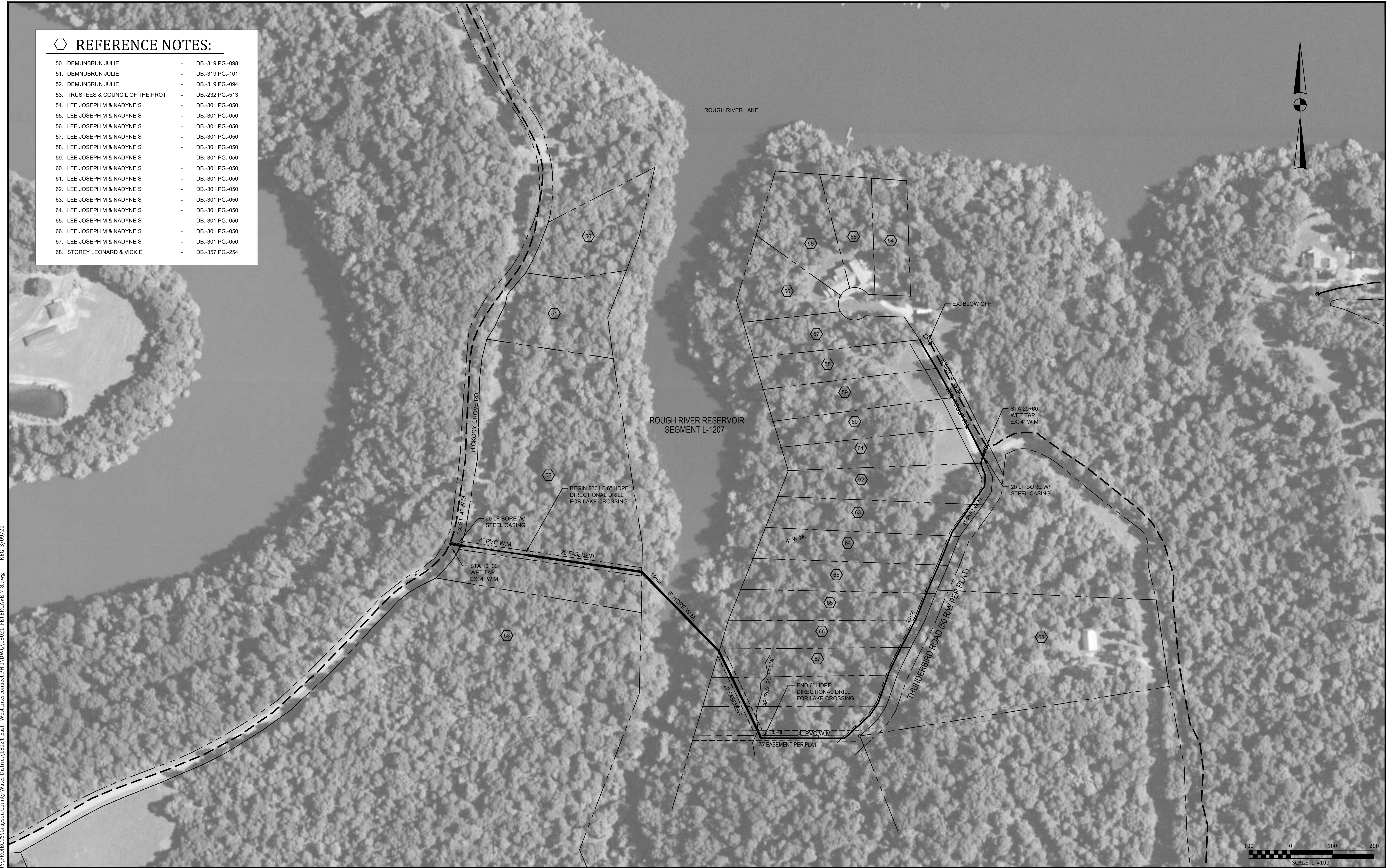
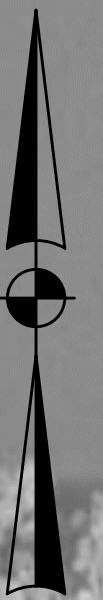
AERIAL PLAN
PETER CAVE TO JOHNNY
FRANK RD.



PROJECT NO.	18021
SHEET NO.	7

REFERENCE NOTES:

- 50. DEMUNBRUN JULIE - DB-319 PG-098
- 51. DEMNUBRUN JULIE - DB-319 PG-101
- 52. DEMUNBRUN JULIE - DB-319 PG-094
- 53. TRUSTEES & COUNCIL OF THE PROT - DB-232 PG-513
- 54. LEE JOSEPH M & NADYNE S - DB-301 PG-050
- 55. LEE JOSEPH M & NADYNE S - DB-301 PG-050
- 56. LEE JOSEPH M & NADYNE S - DB-301 PG-050
- 57. LEE JOSEPH M & NADYNE S - DB-301 PG-050
- 58. LEE JOSEPH M & NADYNE S - DB-301 PG-050
- 59. LEE JOSEPH M & NADYNE S - DB-301 PG-050
- 60. LEE JOSEPH M & NADYNE S - DB-301 PG-050
- 61. LEE JOSEPH M & NADYNE S - DB-301 PG-050
- 62. LEE JOSEPH M & NADYNE S - DB-301 PG-050
- 63. LEE JOSEPH M & NADYNE S - DB-301 PG-050
- 64. LEE JOSEPH M & NADYNE S - DB-301 PG-050
- 65. LEE JOSEPH M & NADYNE S - DB-301 PG-050
- 66. LEE JOSEPH M & NADYNE S - DB-301 PG-050
- 67. LEE JOSEPH M & NADYNE S - DB-301 PG-050
- 68. STOREY LEONARD & VICKIE - DB-357 PG-254

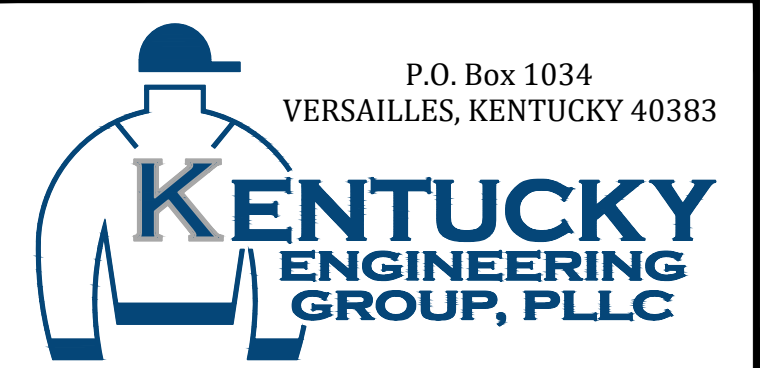


IT IS A VIOLATION OF LAW FOR ANY PERSON TO ALTER THIS DRAWING WITHOUT WRITTEN PERMISSION FROM KENTUCKY ENGINEERING GROUP, PLLC AND ACTING UNDER THE DIRECTION OF A LICENSED ENGINEER.

THIS DRAWING WAS PREPARED AT THE SCALE INDICATED. INACCURACIES IN THE STATED SCALE MAY BE INTRODUCED WHEN DRAWINGS ARE REPRODUCED BY ANY MEANS. USE THE GRAPHIC SCALE BAR IN THE DRAWING OR TITLE BLOCK TO DETERMINE THE ACTUAL SCALE.

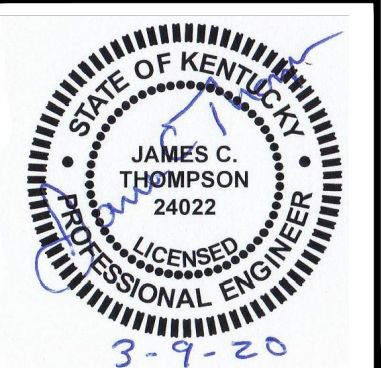
NO.	DATE	REVISIONS	BY

DATE:	MAY 2019
PROJECT MGR:	RET
DRAWN BY:	JAB
CHECKED BY:	JCT
SCALE:	AS NOTED
2019 © Kentucky Engineering Group, PLLC	



GRAYSON COUNTY WATER DISTRICT
EAST - WEST
INTERCONNECT PROJECT

AERIAL PLAN
LILAC TO PETER CAVE

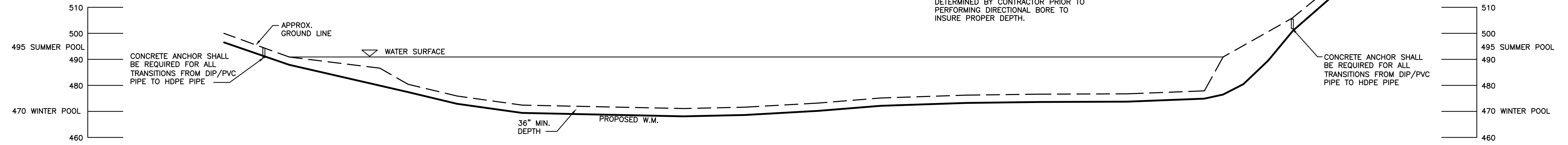


PROJECT NO.	18021
SHEET NO.	8

P:\PROJECTS\Grayson County Water District\18021-East - West Interconnect PH 1\DWG\18021-PETERCAVE-7-8.dwg KEG 3/09/20

BID DOCUMENTS

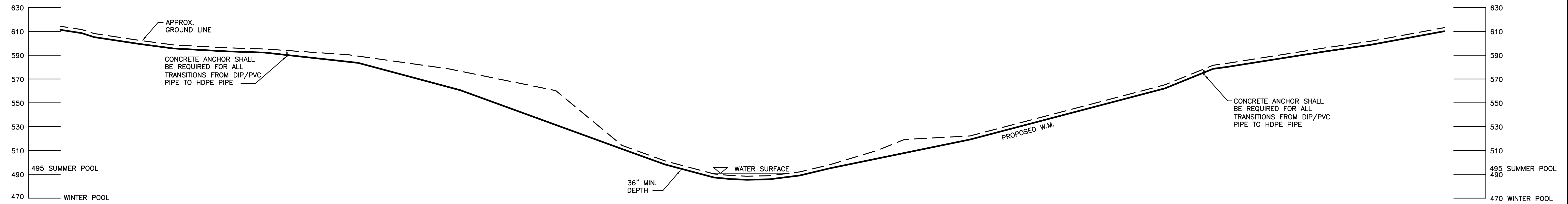
NOTE:
ACTUAL GROUND PROFILE SHALL BE DETERMINED BY CONTRACTOR PRIOR TO PERFORMING DIRECTIONAL BORE TO INSURE PROPER DEPTH.



PETER CAVE TO JOHNNY FRANK DIRECTIONAL BORE

DETAIL

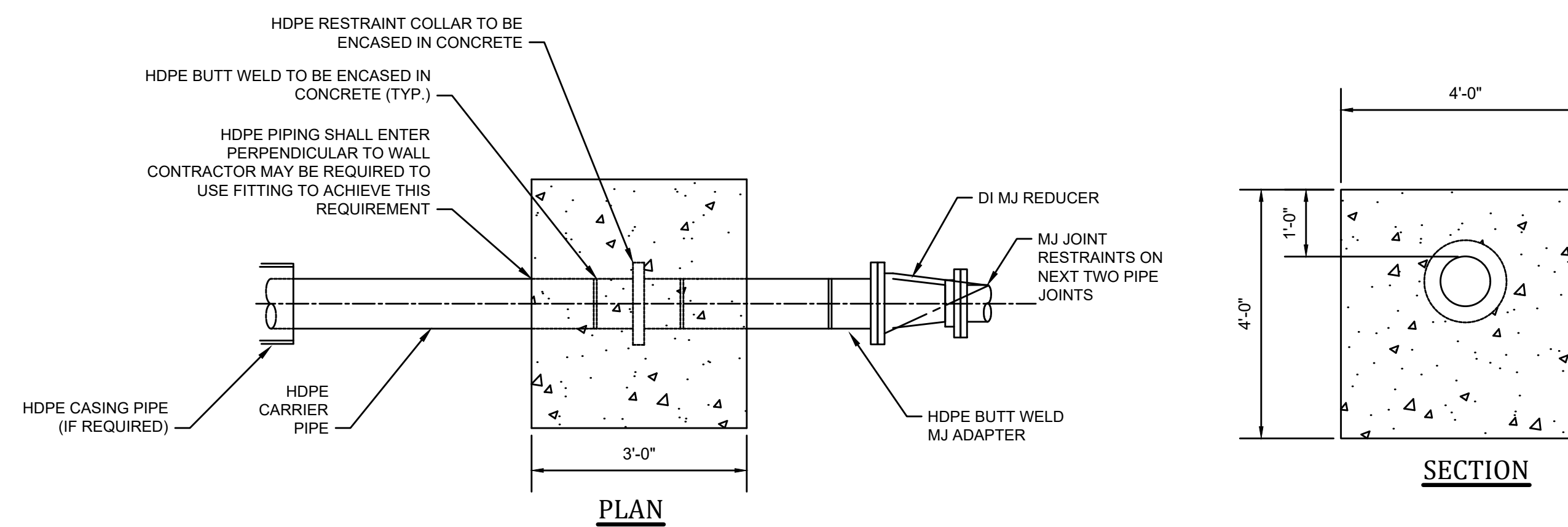
NOT TO SCALE



HICKORY GROVE TO TUNDERBIRD DIRECTIONAL BORE

DETAIL

NOT TO SCALE



HDPE RESTRAINT WALL

NOT TO SCALE

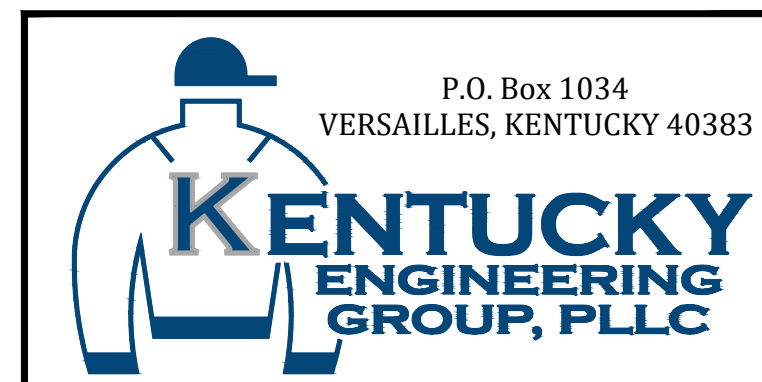
P:\PROJECTS\Grayson County Water District\18021-East - West Interconnect PH 1\DWG\18021-09.dwg REC: 3/09/20

IT IS A VIOLATION OF LAW FOR ANY PERSON TO ALTER THIS DRAWING WITHOUT WRITTEN PERMISSION FROM KENTUCKY ENGINEERING GROUP, PLLC AND ACTING UNDER THE DIRECTION OF A LICENSED ENGINEER.

THIS DRAWING WAS PREPARED AT THE SCALE INDICATED. INACCURACIES IN THE STATED SCALE MAY BE INTRODUCED WHEN DRAWINGS ARE REPRODUCED BY ANY MEANS. USE THE GRAPHIC SCALE BAR IN THE DRAWING OR TITLE BLOCK TO DETERMINE THE ACTUAL SCALE.

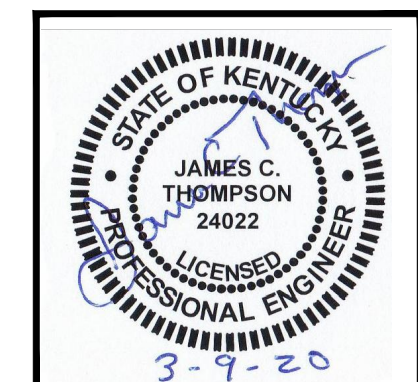
NO.	DATE	REVISIONS	BY

DATE:	MAY 2019
PROJECT MGR:	RET
DRAWN BY:	JAB
CHECKED BY:	JCT
SCALE:	AS NOTED
2019 © Kentucky Engineering Group, PLLC	



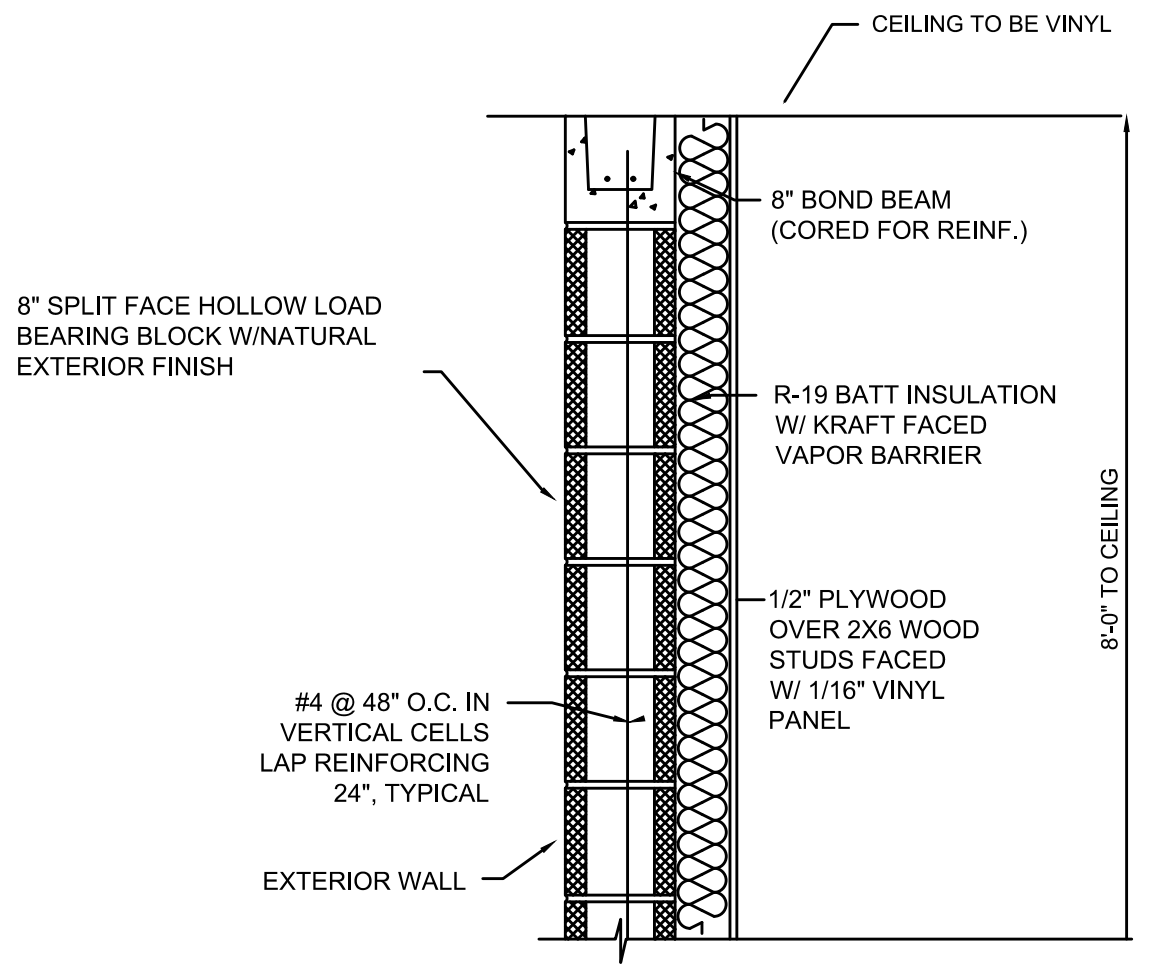
GRAYSON COUNTY WATER DISTRICT
EAST - WEST
INTERCONNECT PROJECT

DIRECTIONAL BORE
DETAILS

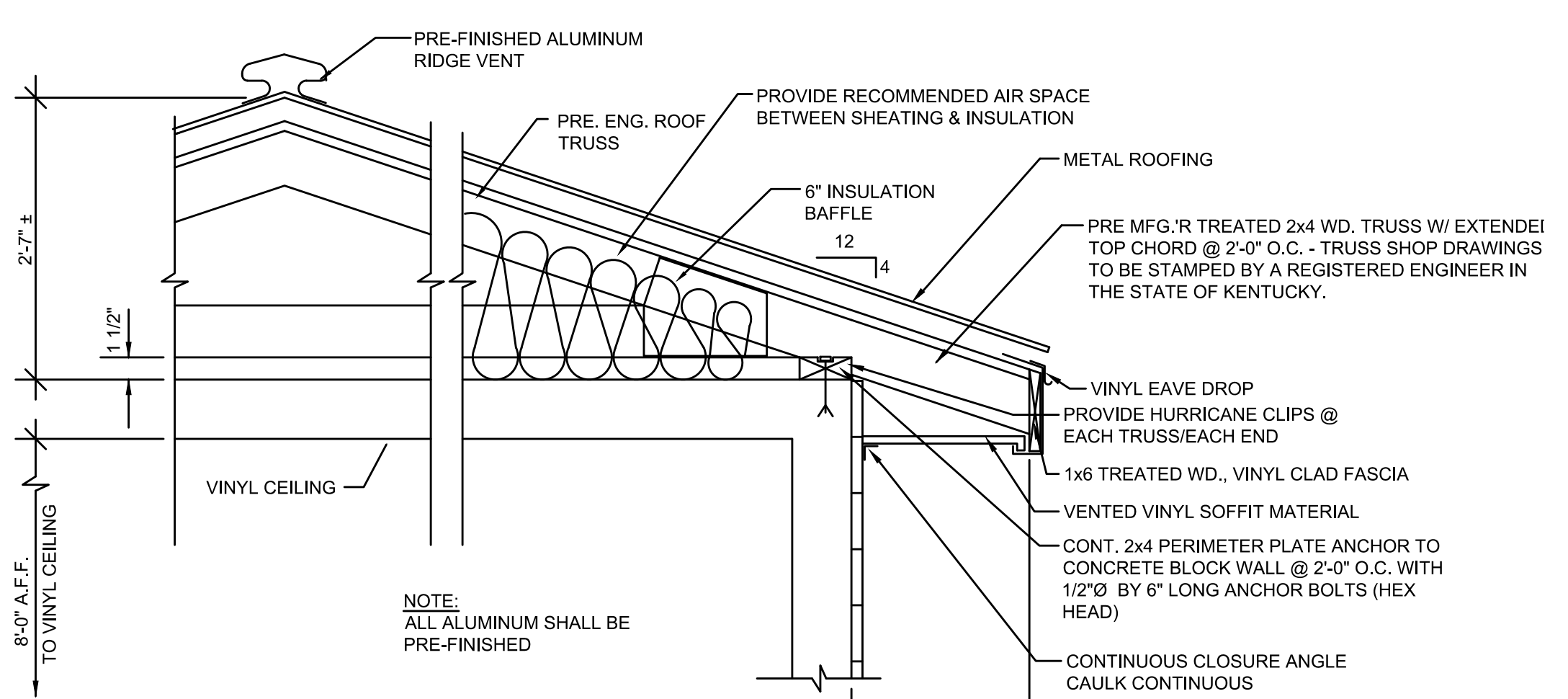


PROJECT NO.	18021
SHEET NO.	9

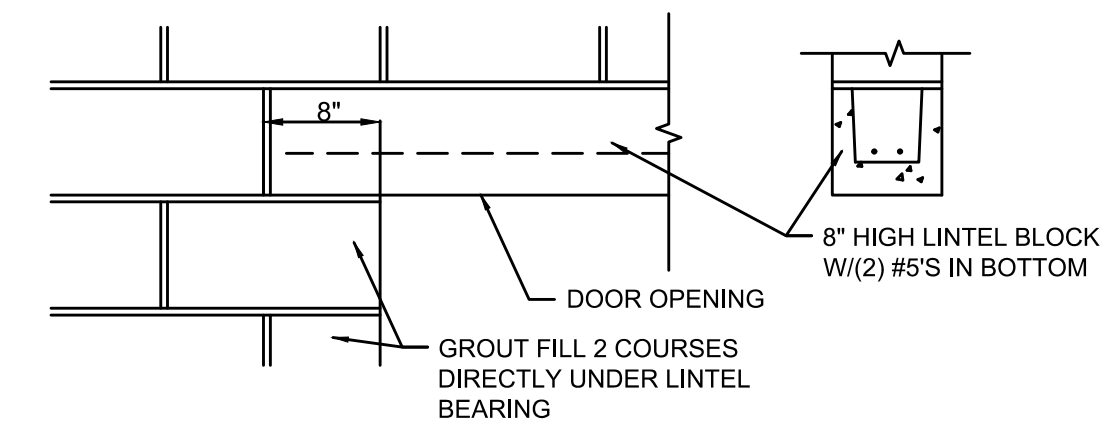
BID DOCUMENTS



TYPICAL WALL SECTION
NOT TO SCALE

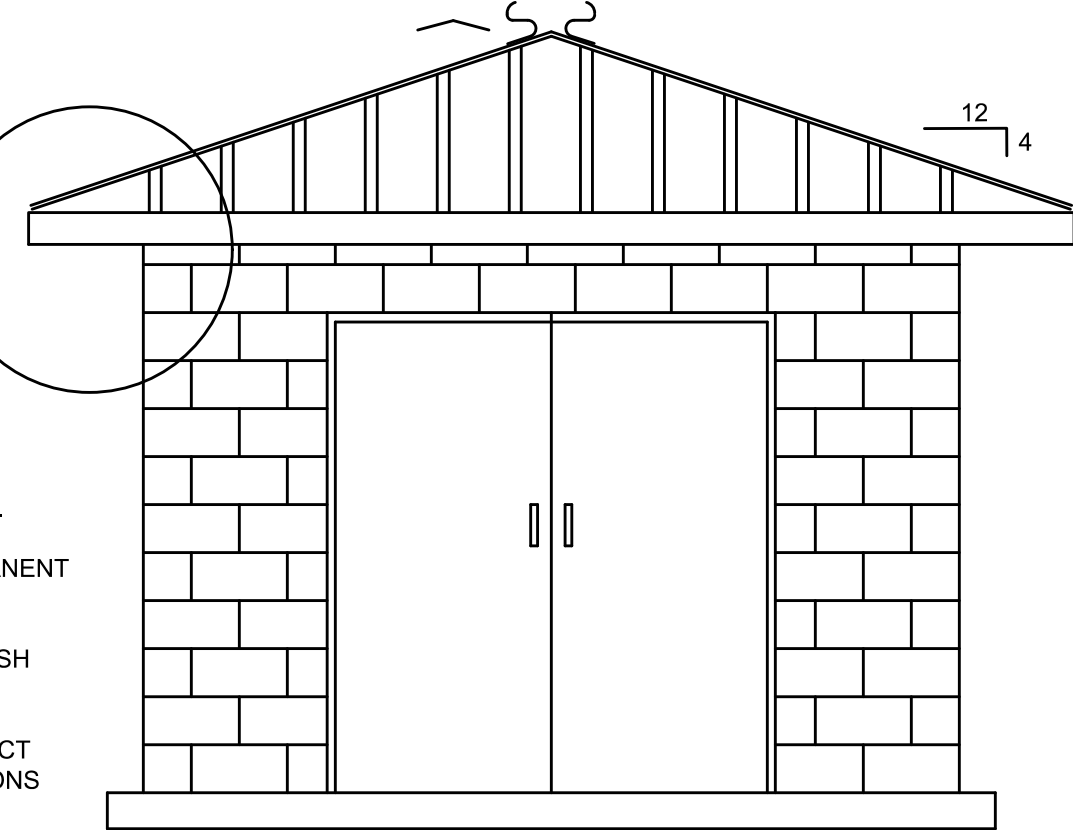


ROOF TRUSS DETAIL
NOT TO SCALE



LINTEL DETAIL
NOT TO SCALE

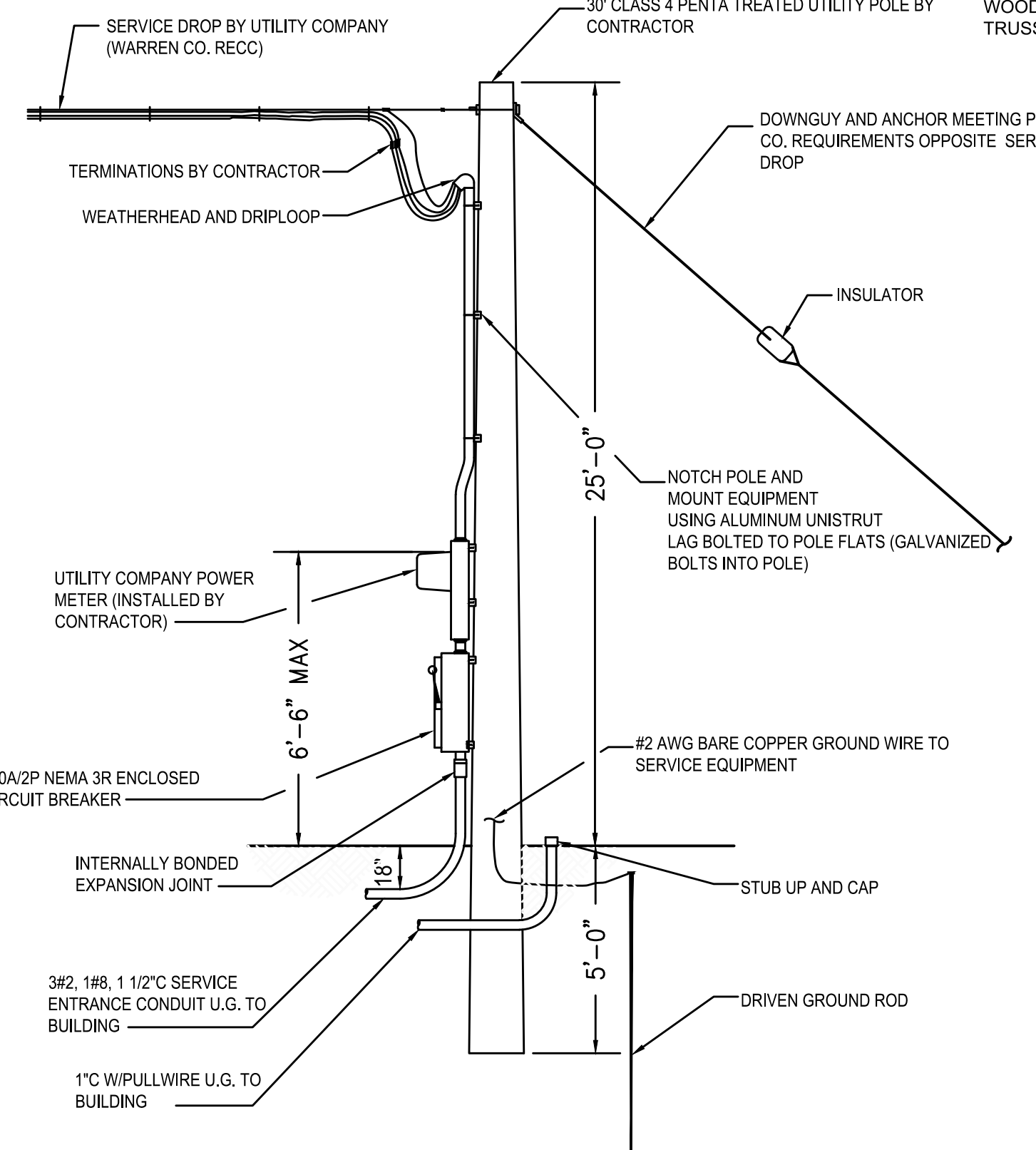
- TRUSS NOTES:**
- TRUSS SPACING: 24" O.C. UNLESS NOTED OTHERWISE.
 - ROOF TRUSS LOADING: 40 P.S.F.
 - MAXIMUM TOTAL DEFLECTION = L/240
 - ROOF TRUSS MATERIALS SHALL BE - SOUTHERN PINE (MIN. GRADE 2).
 - TRUSS MANUFACTURER SHALL DESIGN ALL TEMPORARY AND PERMANENT LATERAL BRIDGING AND BRACING.
 - ENGINEERING CERTIFICATION: TRUSS MANUFACTURER SHALL FURNISH THE SERVICES OF A REGISTERED STRUCTURAL ENGINEER FOR THE DESIGN AND CERTIFICATION OF PREFABRICATED COMPONENTS (TRUSSES). THE ENGINEER SHALL BE RESPONSIBLE FOR THE CORRECT MANUFACTURING OF THE TRUSSES AND FOR THE LOADING CONDITIONS TO WHICH THE TRUSSES WILL BE SUBJECTED IN THE COMPLETED PROJECT.
 - ALLOWABLE TRUSS SPANS: BASED UPON METAL PLATE CONNECTED WOOD TRUSSES, TPI-78, RECOMMENDED DESIGN PRACTICE BY THE TRUSS PLATE INSTITUTE.



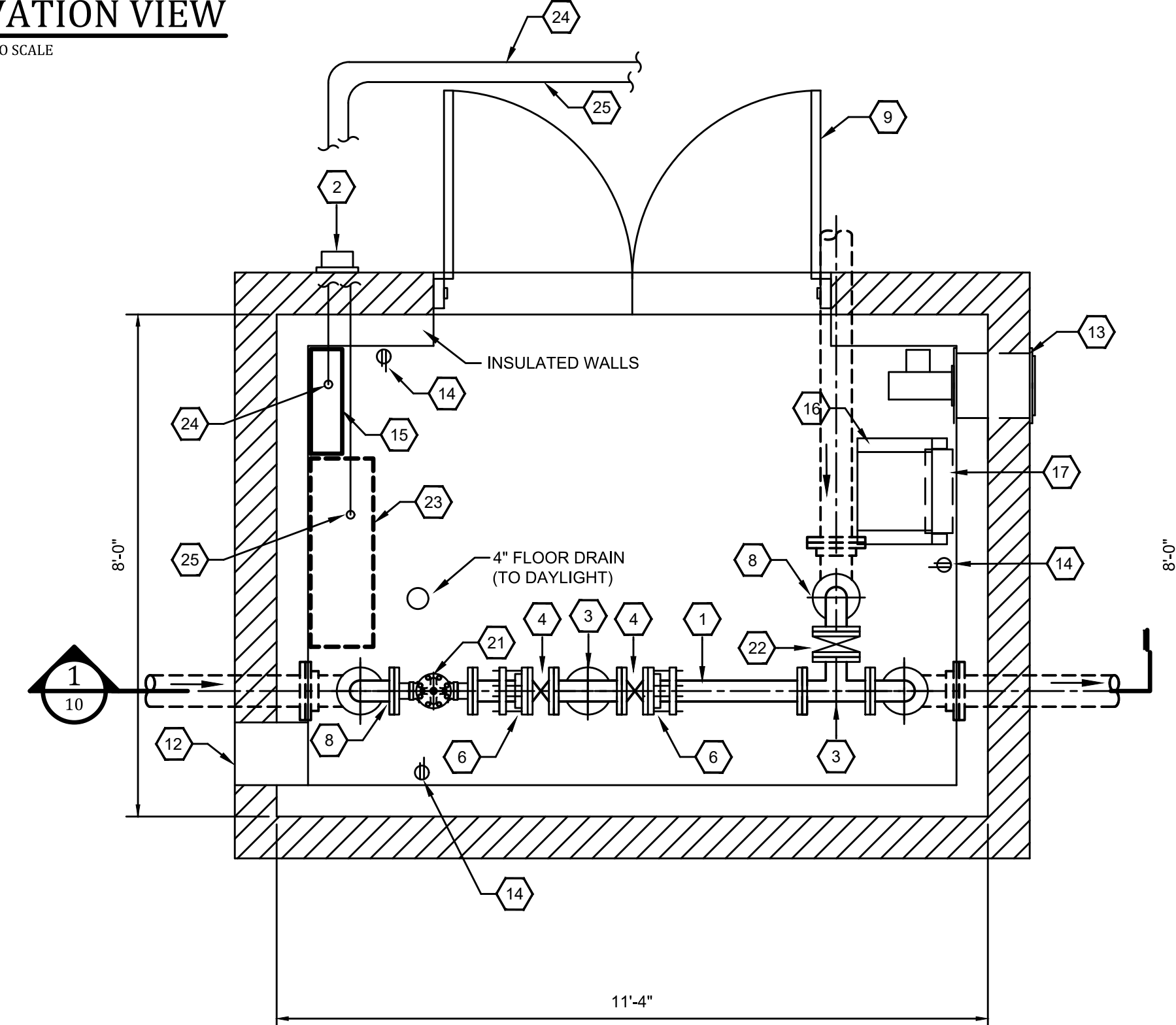
FRONT ELEVATION VIEW
NOT TO SCALE

REFERENCE NOTES:

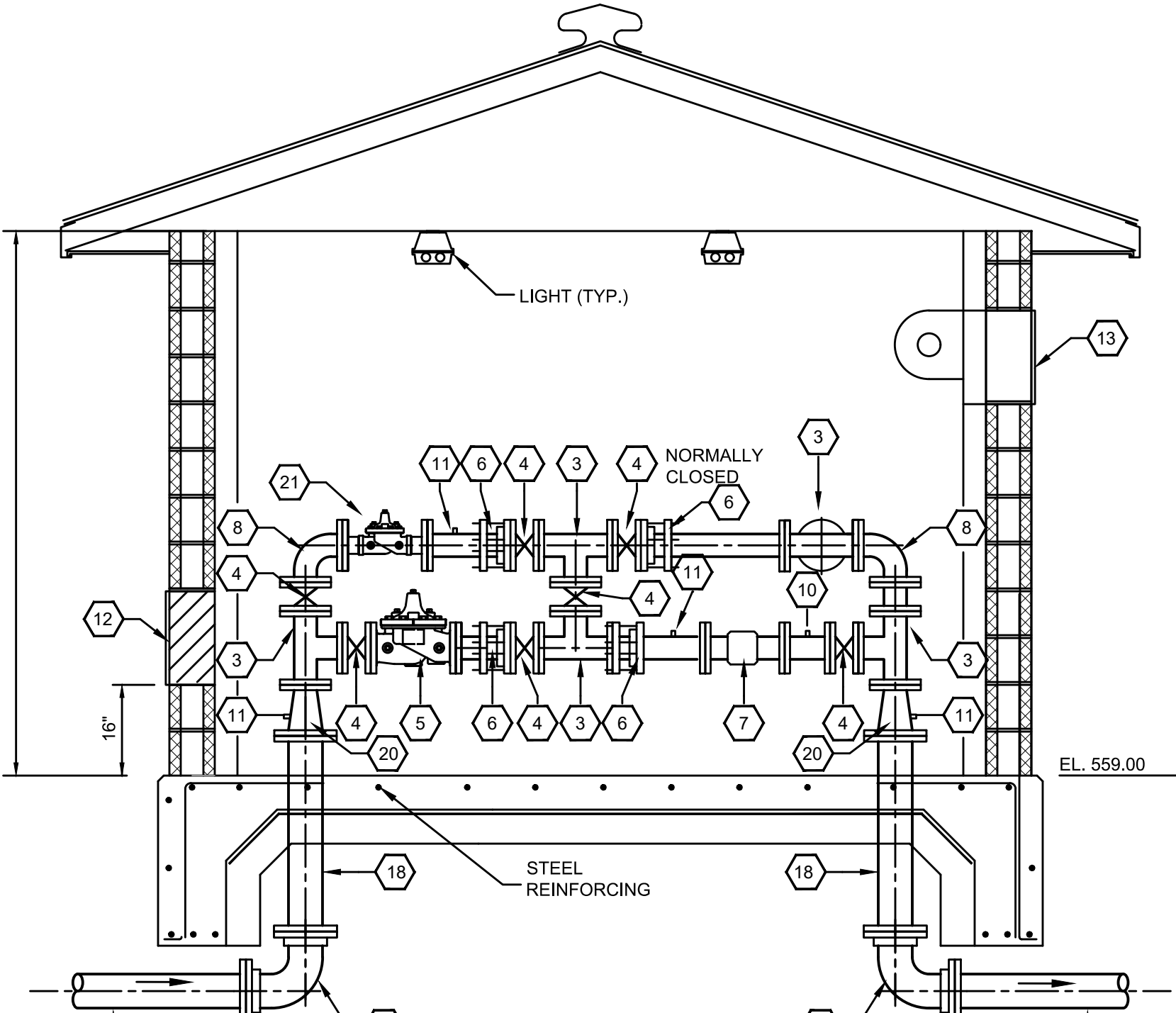
- 4" DI PIPE
- EXTERIOR LIGHT
- 4" DI TEE
- 4" BUTTERFLY VALVE
- 4" PRV
- 4" FLANGE COUPLING ADAPTER
- 4" ULTRASONIC METER (PROVIDED BY OWNER)
- 4" 90° ELBOW
- DOUBLE DOOR
- TEST PORT
- 1/4" TAP AND BALL VALVE
- 12" X 24" INTAKE 16" FROM FLOOR
- LOUVERED OUTLET W/ EXHAUST FAN
- ELECTRICAL OUTLET
- ELECTRICAL PANEL
- MOUNT HEATER 30" FROM FLOOR
- FLOOR MOUNT DEHUMIDIFIER
- 6" DI PIPE
- 6" DI MJ 90° ELBOW
- 6" X 4" DI REDUCER
- 2" PRV
- 4" BUTTERFLY VALVE W/ ACTUATOR
- TELEMETRY PANEL (BY ALLOWANCE)
- 3#2, 1#8, 1 1/2" C TO SERVICE / ANTENNA POLE. ROUTE UNDERGROUND AND UNDER SLAB TO PANEL.
- 1" C W/ PULL WIRE U.G. TO BUILDING



SERVICE / ANTENNA POLE DETAIL
HIGHWAY 259 SOUTH MASTER METER
SCALE: 1" = 20'

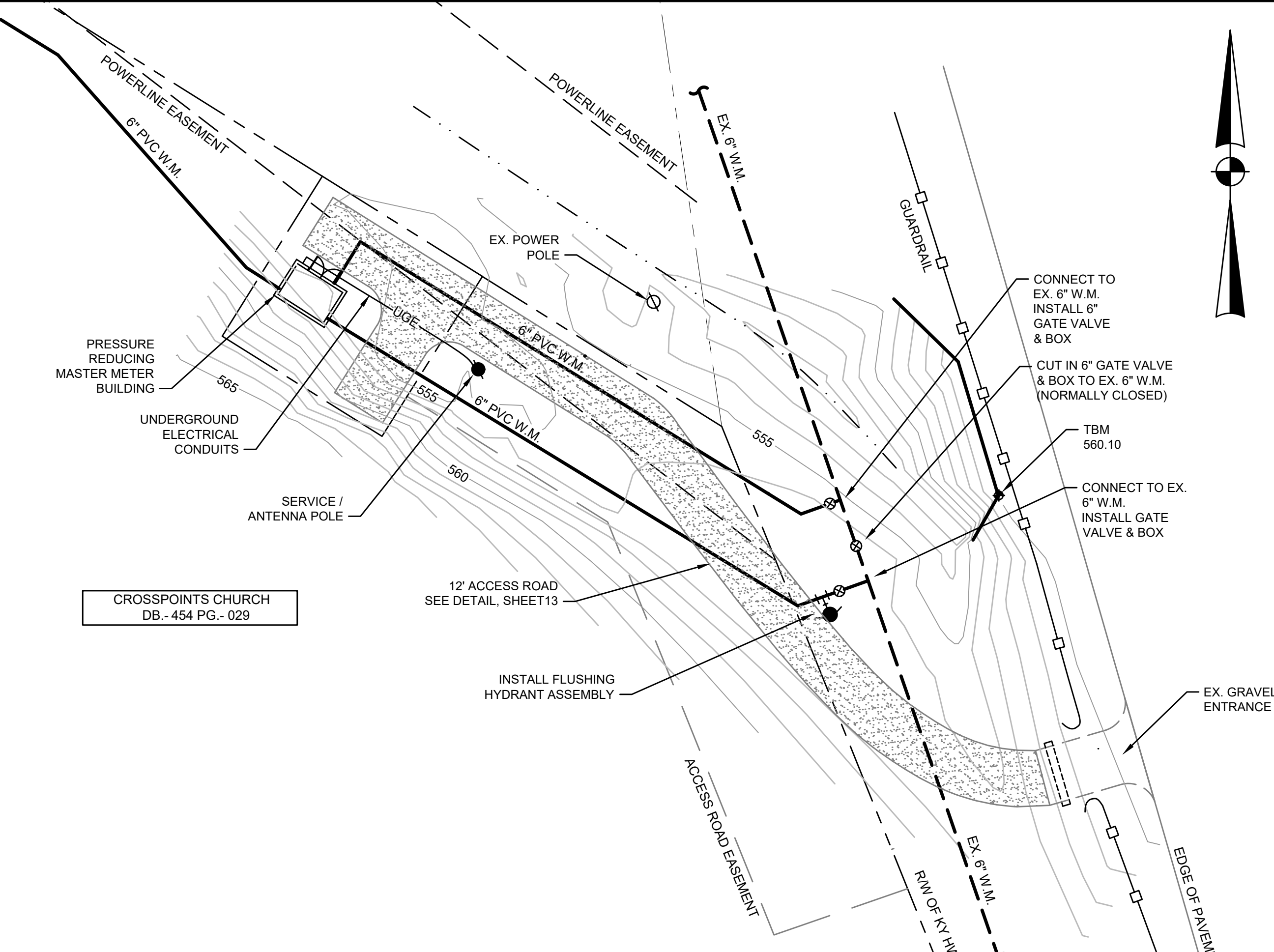


ABOVE GROUND MASTER METER - PLAN
SCALE: 1/2" = 1'-0"



SECTION
SCALE: 1/2" = 1'-0"

HWY 259 SOUTH PRESSURE REDUCING MASTER METER - SITE PLAN
SCALE: 1" = 20'



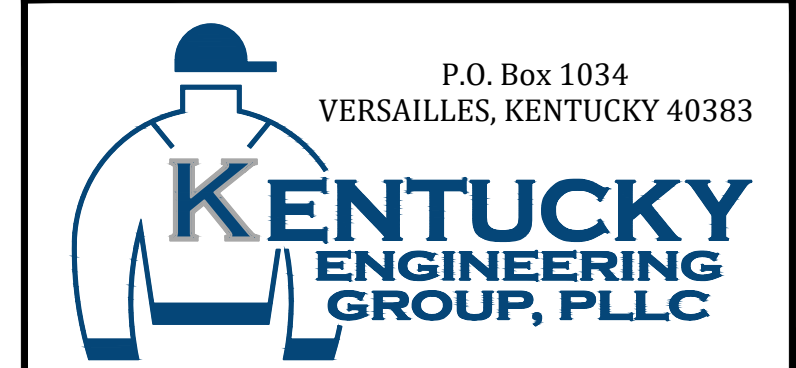
P:\PROJECTS\Grayson County Water District\18021-East - West Interconnect PH 1.DWG\18021-10.dwg REC: 3/09/20

IT IS A VIOLATION OF LAW FOR ANY PERSON TO ALTER THIS DRAWING WITHOUT WRITTEN PERMISSION FROM KENTUCKY ENGINEERING GROUP, PLLC AND ACTING UNDER THE DIRECTION OF A LICENSED ENGINEER.

THIS DRAWING WAS PREPARED AT THE SCALE INDICATED. INACCURACIES IN THE STATED SCALE MAY BE INTRODUCED WHEN DRAWINGS ARE REPRODUCED BY ANY MEANS. USE THE GRAPHIC SCALE BAR IN THE DRAWING OR TITLE BLOCK TO DETERMINE THE ACTUAL SCALE.

NO.	DATE	REVISIONS	BY

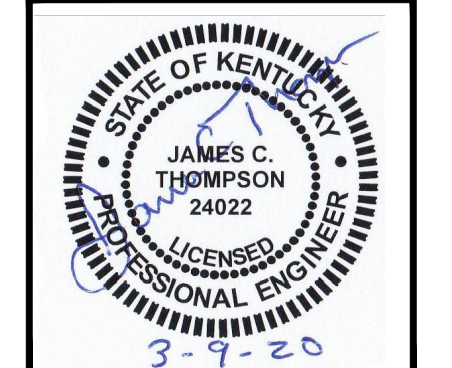
DATE:	MAY 2019
PROJECT MGR:	RET
DRAWN BY:	JAB
CHECKED BY:	JCT
SCALE:	AS NOTED
2019 © Kentucky Engineering Group, PLLC	



P.O. Box 1034
VERSAILLES, KENTUCKY 40383

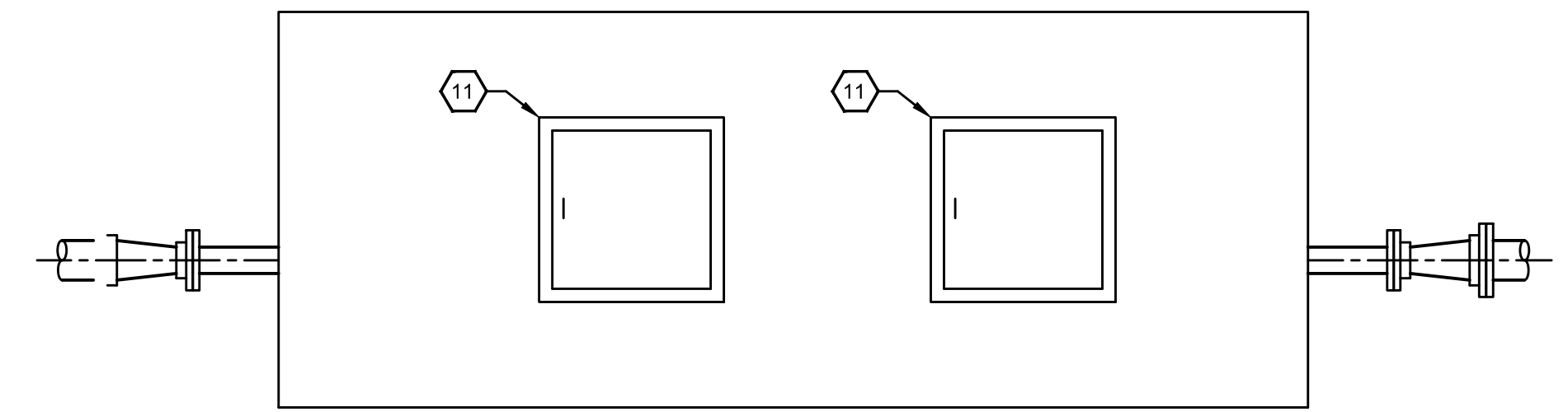
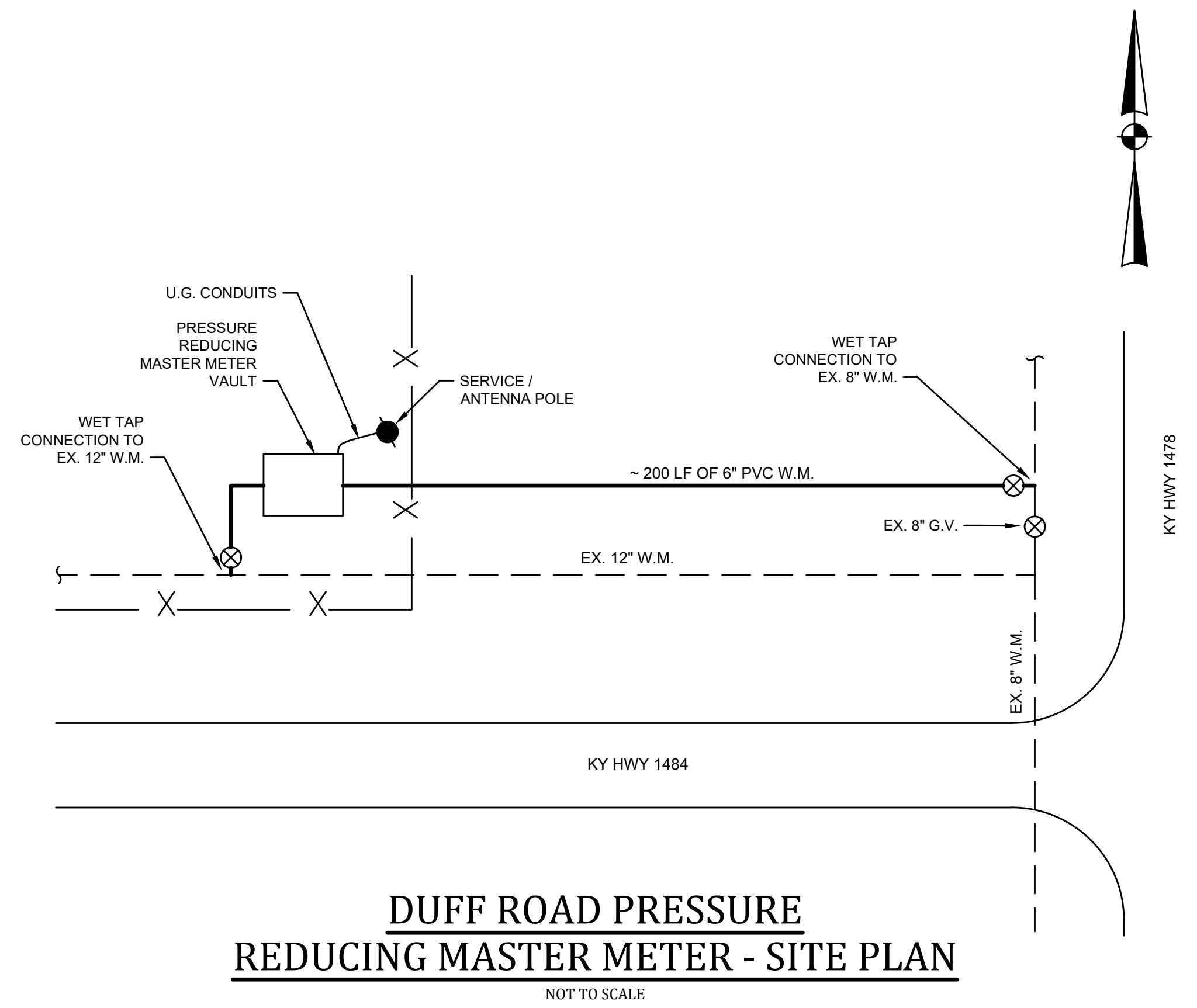
GRAYSON COUNTY WATER DISTRICT
EAST - WEST
INTERCONNECT PROJECT

HWY 259 SOUTH PRESSURE REDUCING MASTER METER DETAILS

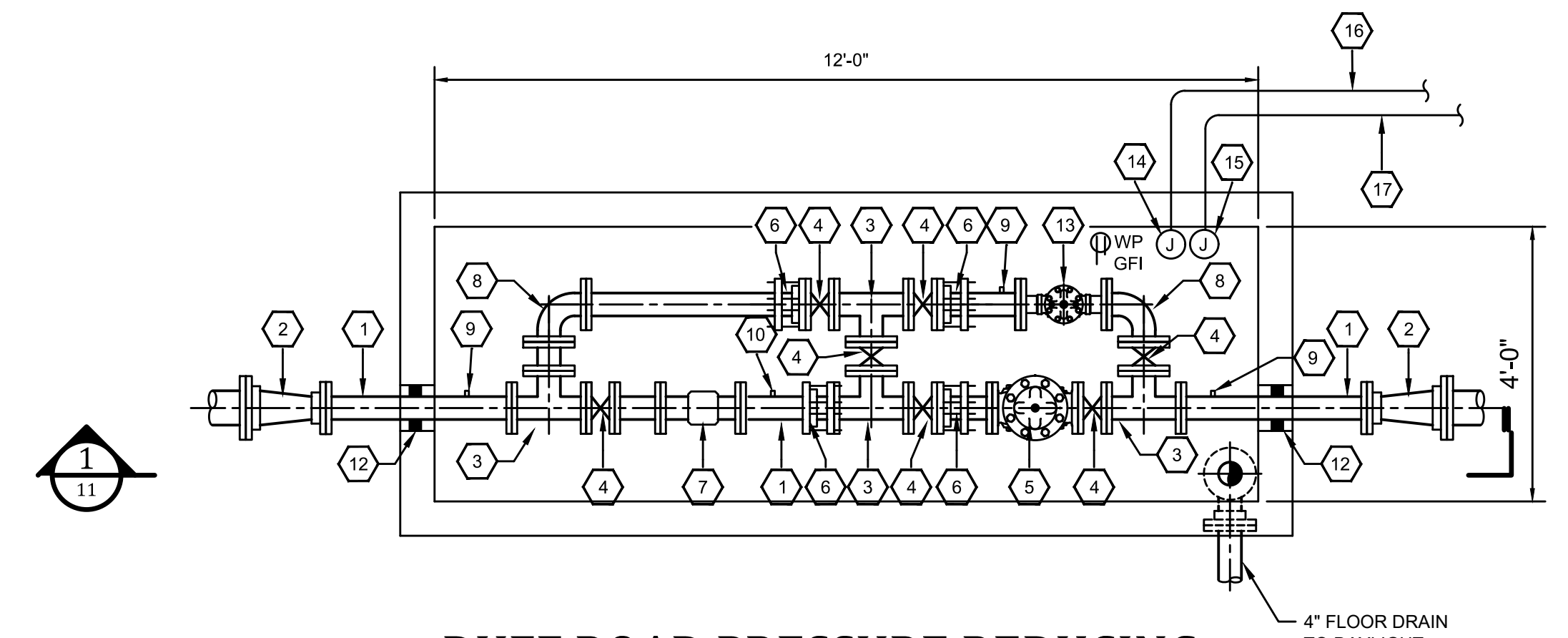


PROJECT NO.	18021
SHEET NO.	10

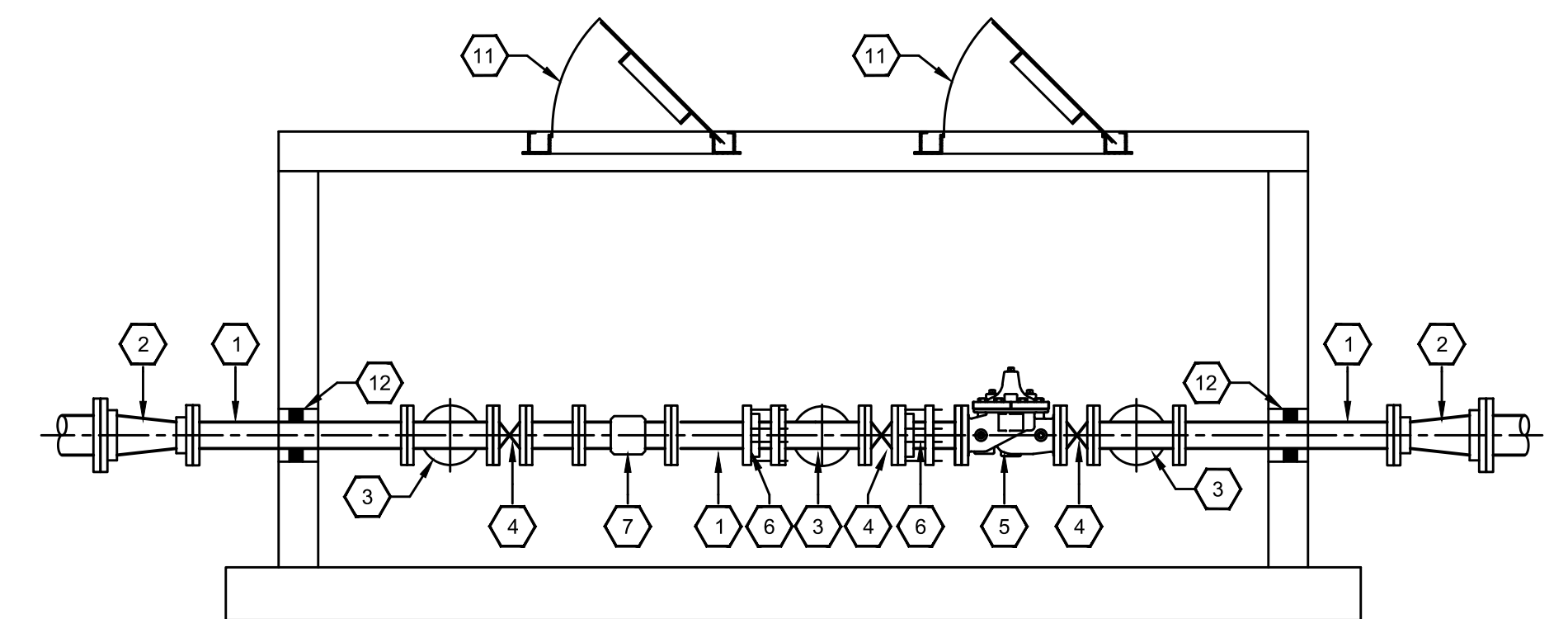
BID DOCUMENTS



DUFF ROAD PRESSURE REDUCING MASTER METER - TOP SLAB PLAN
SCALE: 1/2" = 1'-0"



DUFF ROAD PRESSURE REDUCING MASTER METER - PLAN
SCALE: 1/2" = 1'-0"

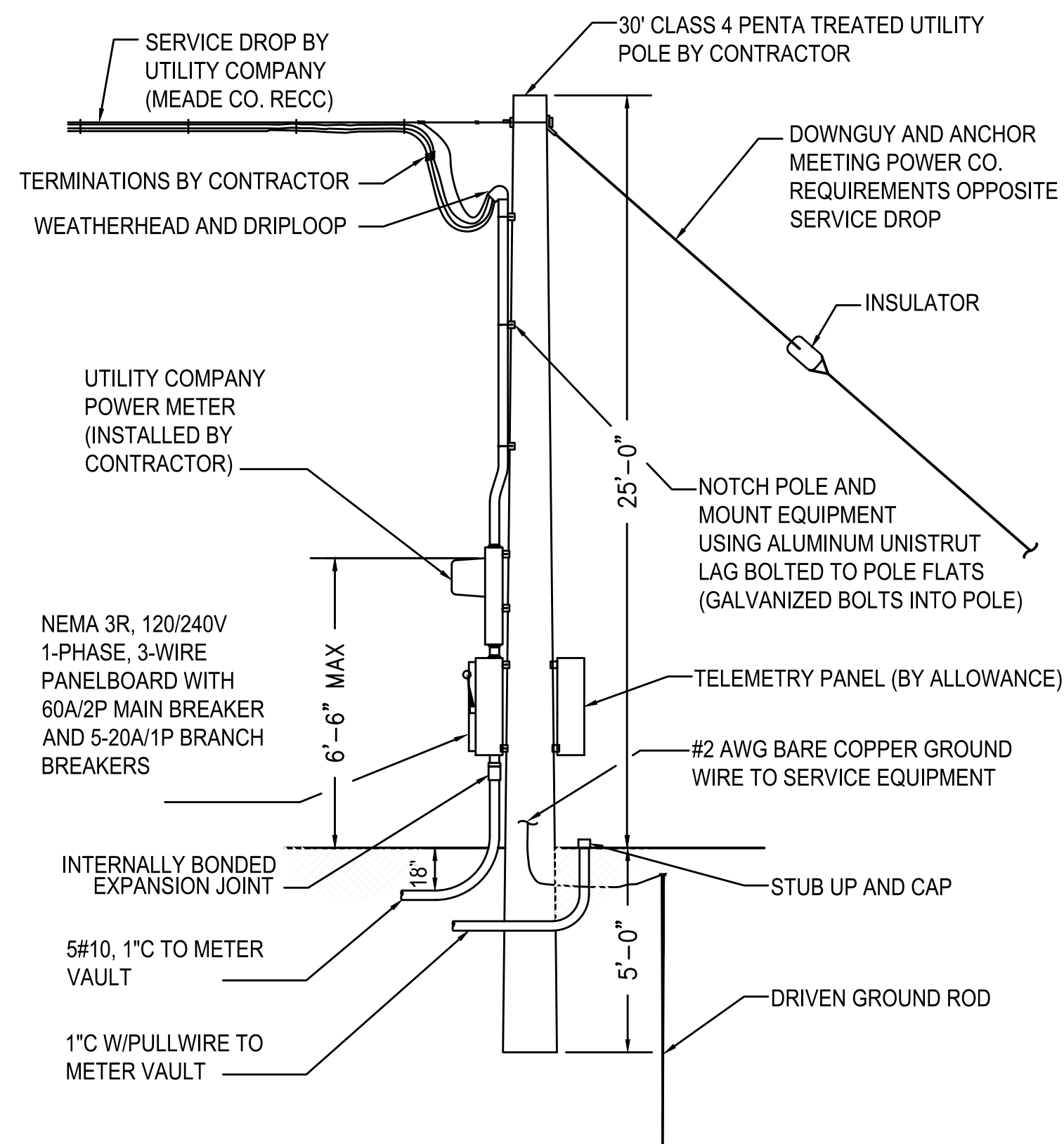


SECTION
SCALE: 1/2" = 1'-0"

REFERENCE NOTES:

1. 4" DI PIPE
2. 6" X 4" DI MJ REDUCER
3. 4" DI TEE
4. 4" BUTTERFLY VALVE
5. 4" PRV
6. 4" FLANGE COUPLING ADAPTER (PROVIDED BY OWNER)
7. 4" ULTRASONIC METER
8. 4" DI 90° ELBOW
9. 1/4" TAP W/ BALL VALVE
10. TEST PORT
11. 2'-0" X 2'-0" ALUMINUM WATER TIGHT ACCESS HATCH
12. LINK SEAL
13. 2" PRV
14. NEMA 4X JUNCTION BOX FOR POWER TO FLOW METER AND RECEPTACLE
15. NEMA 4X JUNCTION BOX FOR FUTURE SIGNALS
16. 5#10, 1" C TO PANELBOARD
17. 1" C W/ PULL WIRE TO POLE

NOTE:
2" LIQUID FILLED PRESSURE GAUGES
LOCATED AT COMMON INLET/OUTLET,
W/ 1/4" TAP AND BALL VALVE



SERVICE / ANTENNA POLE DETAIL
DUFF ROAD MASTER METER
NOT TO SCALE

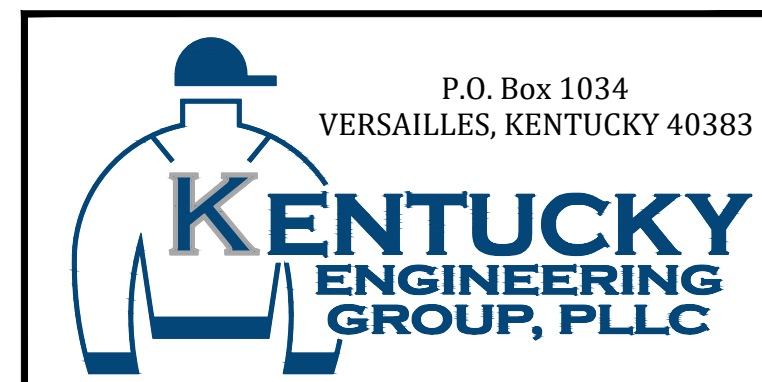
P:\PROJECTS\Grayson County Water District\18021-East - West Interconnect PH 1.DWG\18021-11.dwg REC: 3/09/20

IT IS A VIOLATION OF LAW FOR ANY PERSON TO ALTER THIS DRAWING WITHOUT WRITTEN PERMISSION FROM KENTUCKY ENGINEERING GROUP, PLLC AND ACTING UNDER THE DIRECTION OF A LICENSED ENGINEER.

THIS DRAWING WAS PREPARED AT THE SCALE INDICATED. INACCURACIES IN THE STATED SCALE MAY BE INTRODUCED WHEN DRAWINGS ARE REPRODUCED BY ANY MEANS. USE THE GRAPHIC SCALE BAR IN THE DRAWING OR TITLE BLOCK TO DETERMINE THE ACTUAL SCALE.

NO.	DATE	REVISIONS	BY

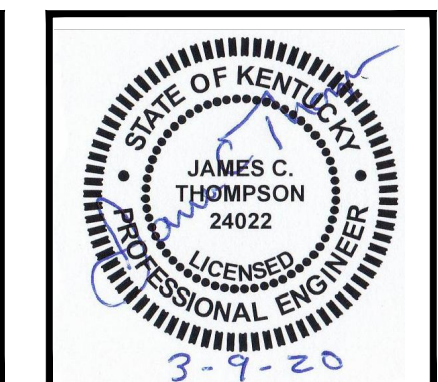
DATE:	MAY 2019
PROJECT MGR:	RET
DRAWN BY:	JAB
CHECKED BY:	JCT
SCALE:	AS NOTED
2019 © Kentucky Engineering Group, PLLC	



P.O. Box 1034
VERSAILLES, KENTUCKY 40383

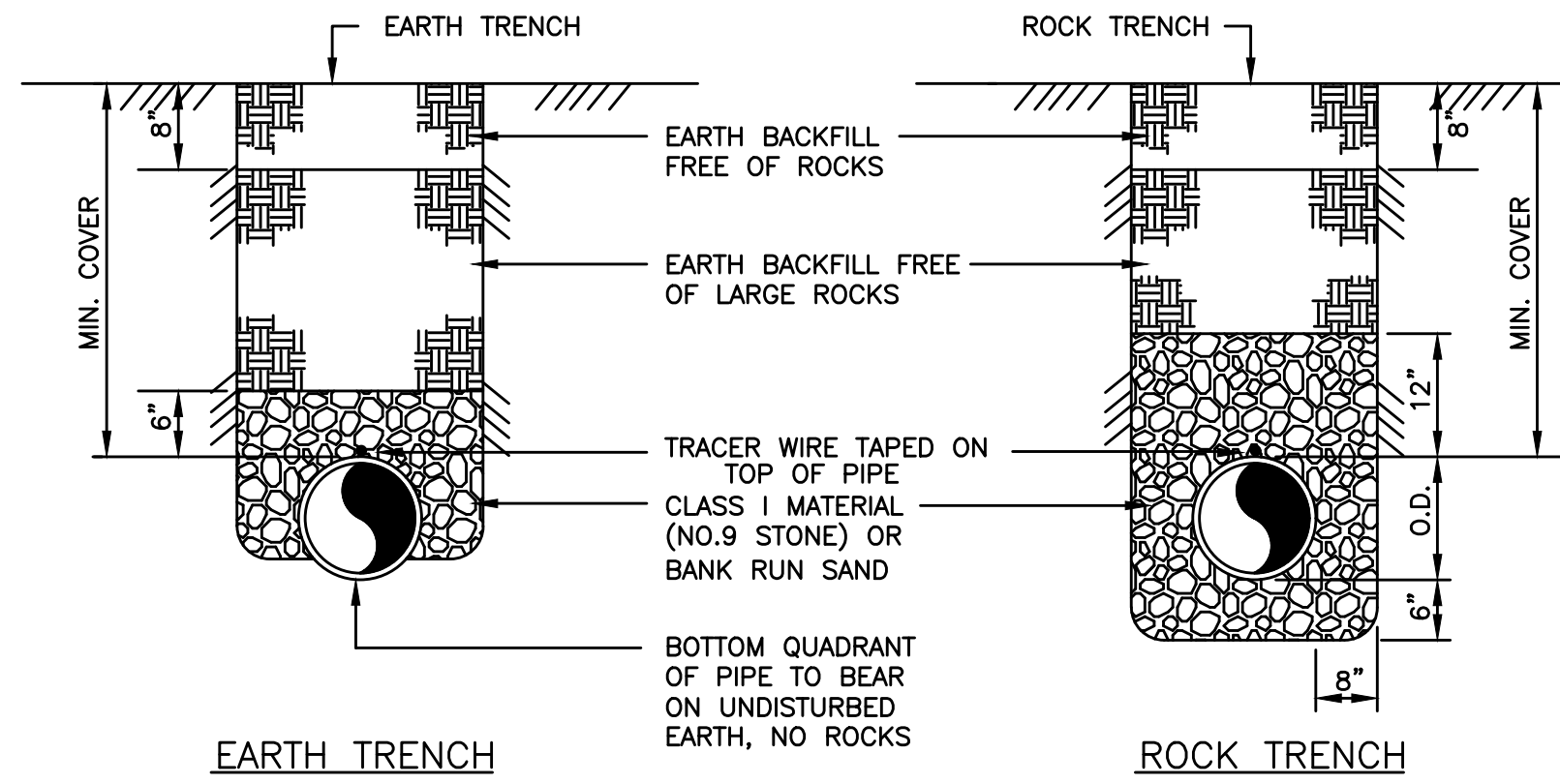
GRAYSON COUNTY WATER DISTRICT
EAST - WEST
INTERCONNECT PROJECT

DUFF ROAD
PRESSURE REDUCING
MASTER METER
DETAILS



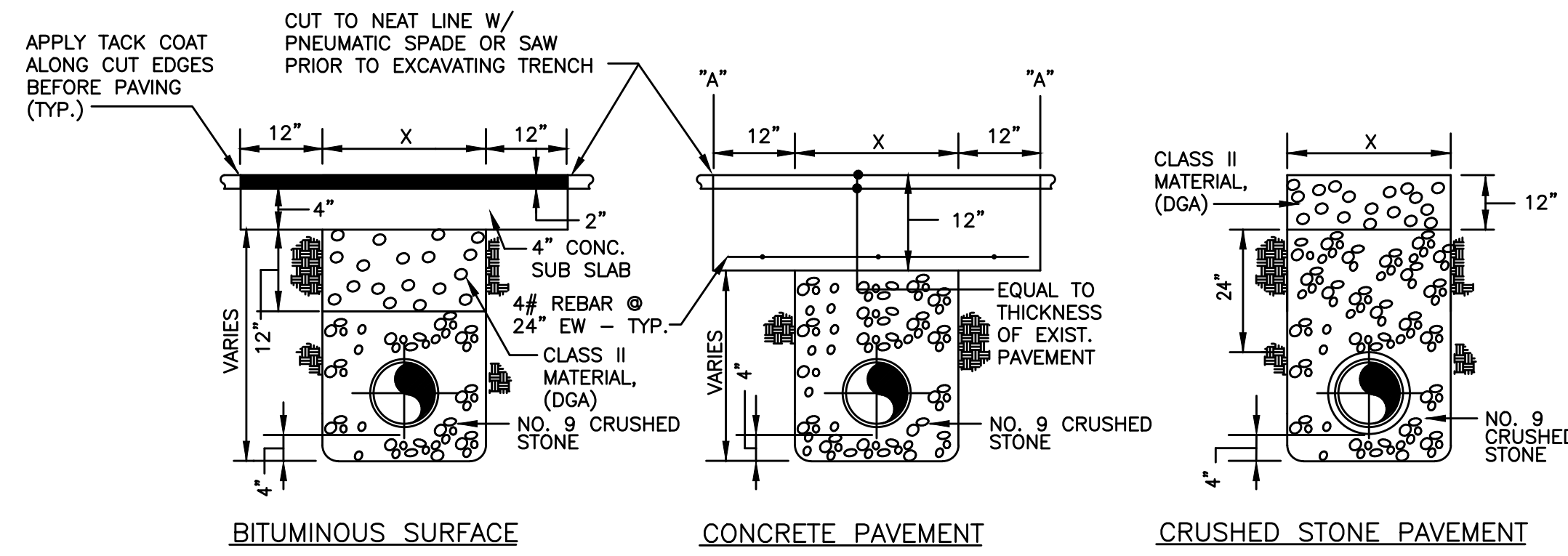
PROJECT NO.	18021
SHEET NO.	11

BID DOCUMENTS



TYPICAL BEDDING and BACKFILL

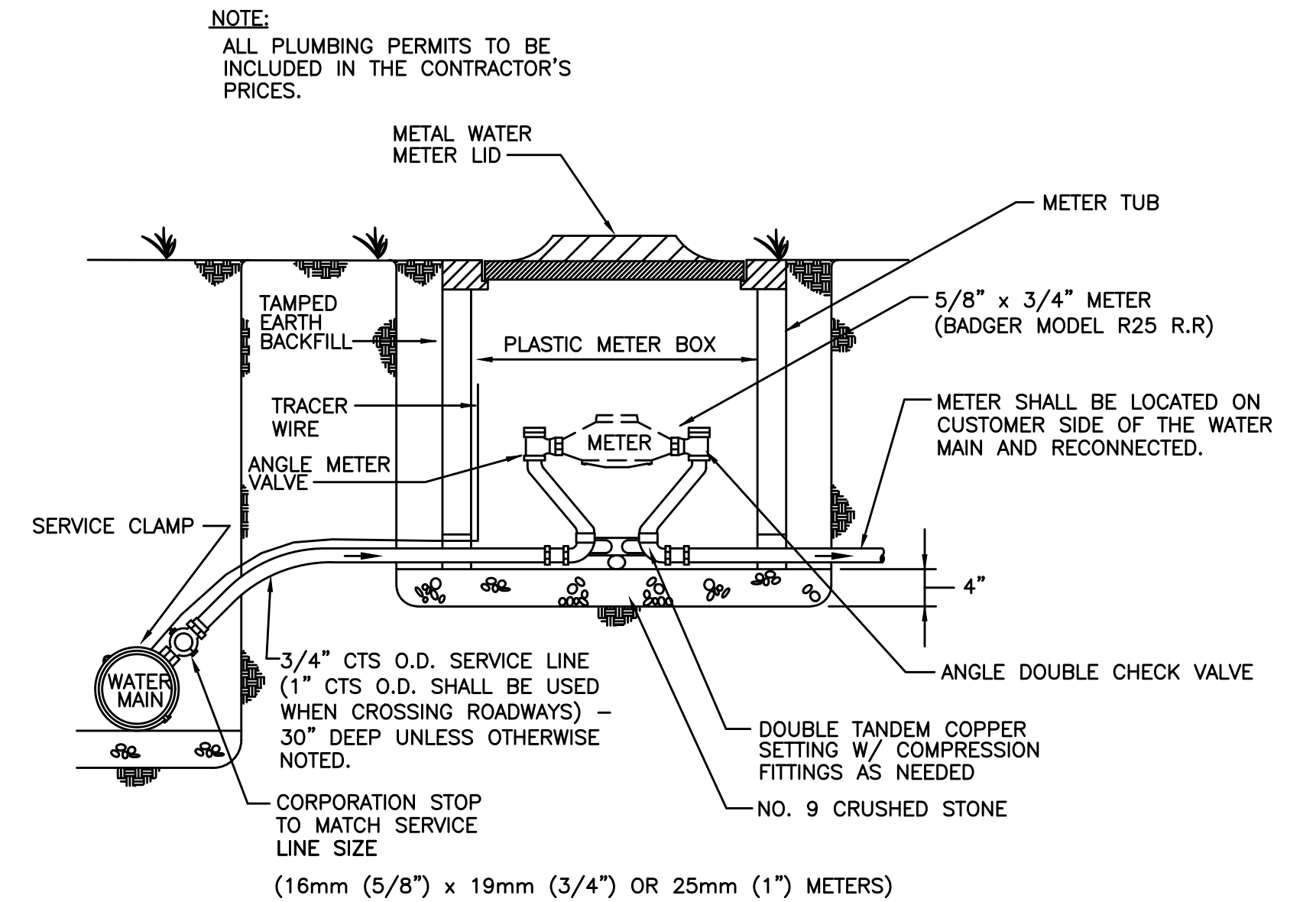
NOT TO SCALE



PAVEMENT REPLACEMENT

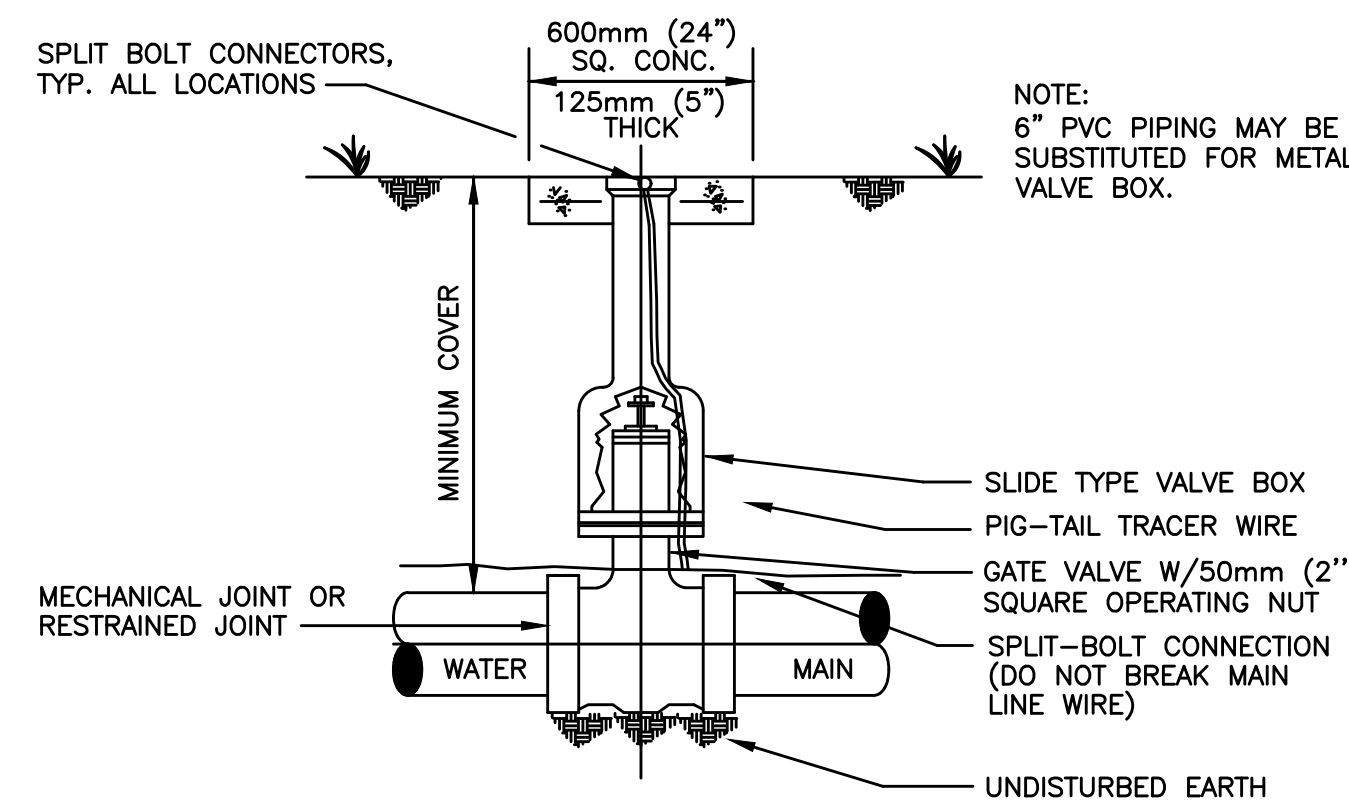
NOT TO SCALE

NOTE:
WATER MAIN INSTALLED WHERE FUTURE PAVEMENT IS TO BE CONSTRUCTION SHALL BE BACKFILLED IN ACCORDANCE WITH CRUSHED STONE PAVEMENT REPLACEMENT



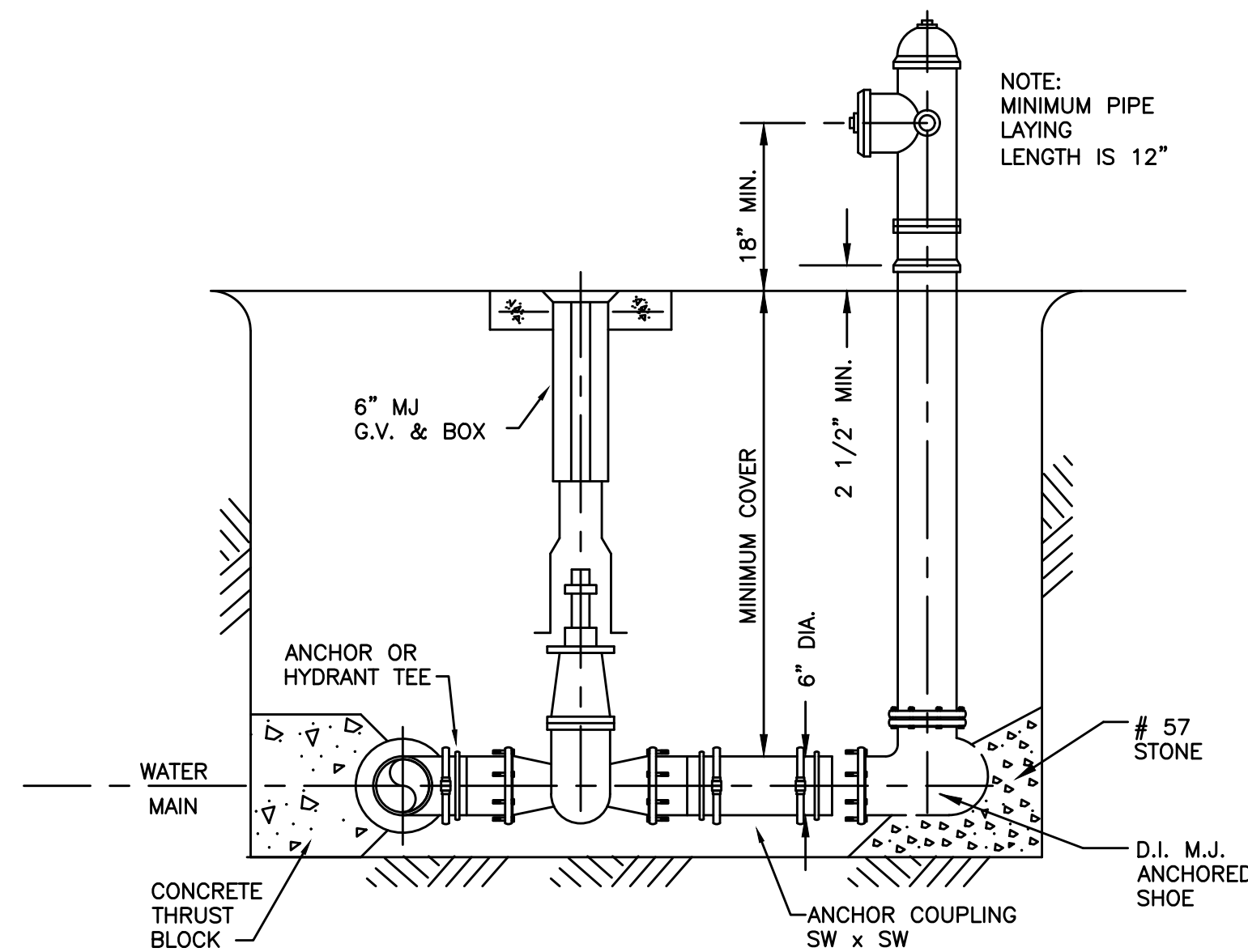
TYPICAL SERVICE CONNECTION

NOT TO SCALE



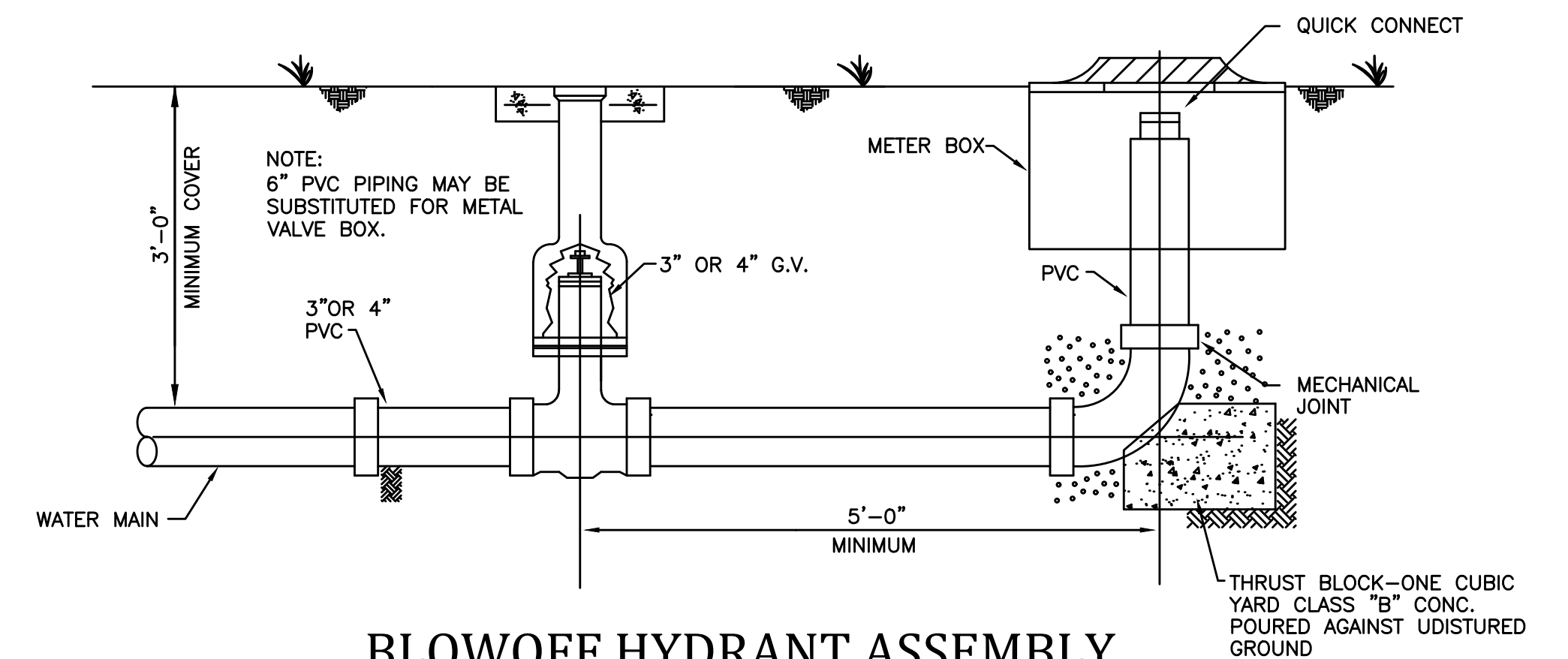
GATE VALVE INSTALLATION

NOT TO SCALE



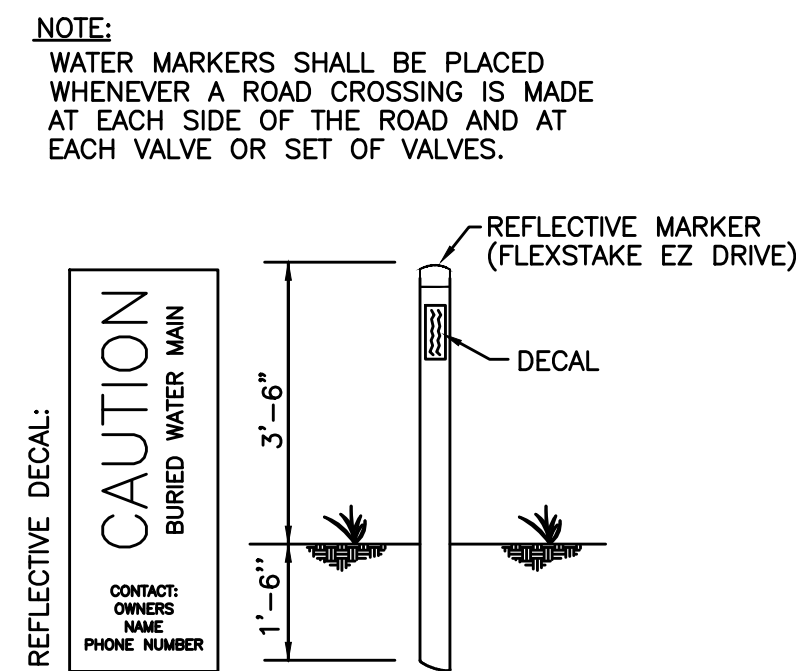
FLUSHING HYDRANT ASSEMBLY

NOT TO SCALE



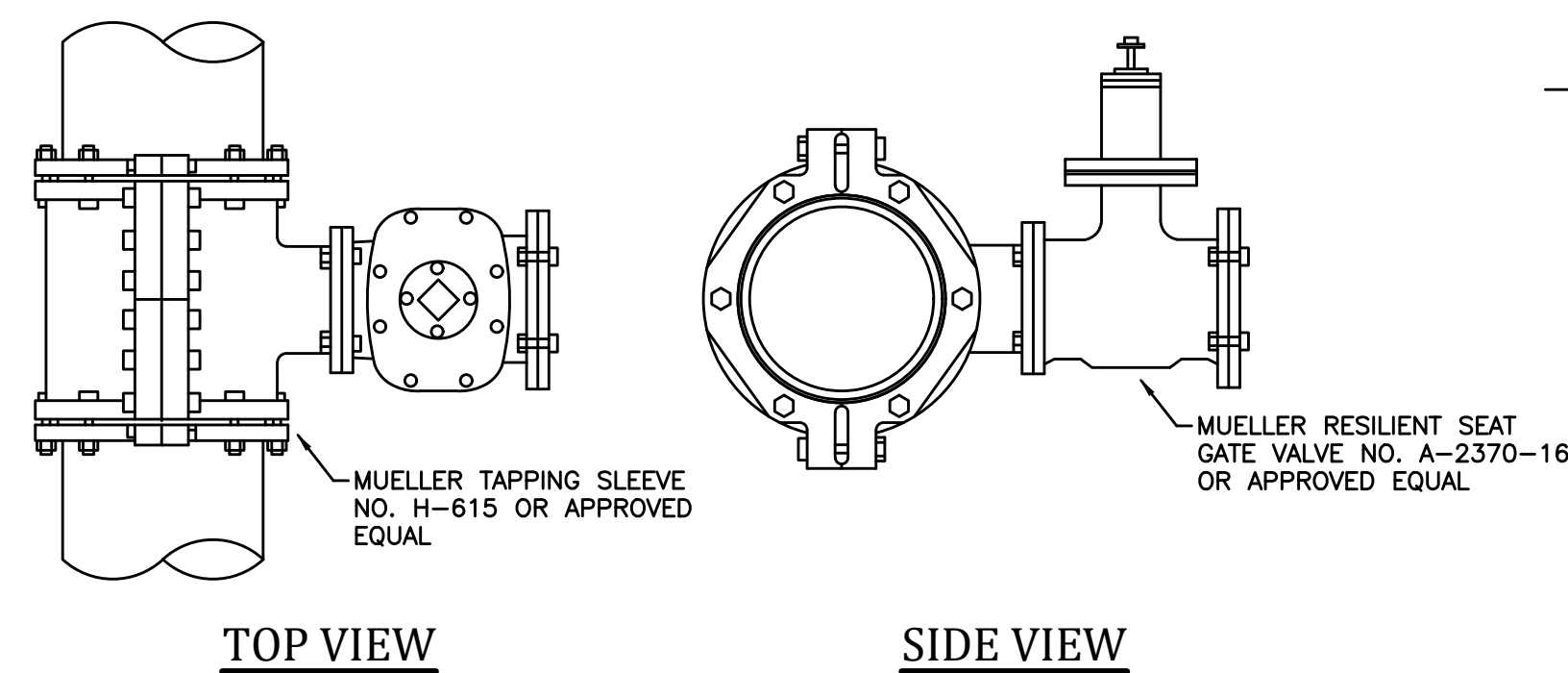
BLOWOFF HYDRANT ASSEMBLY

NOT TO SCALE



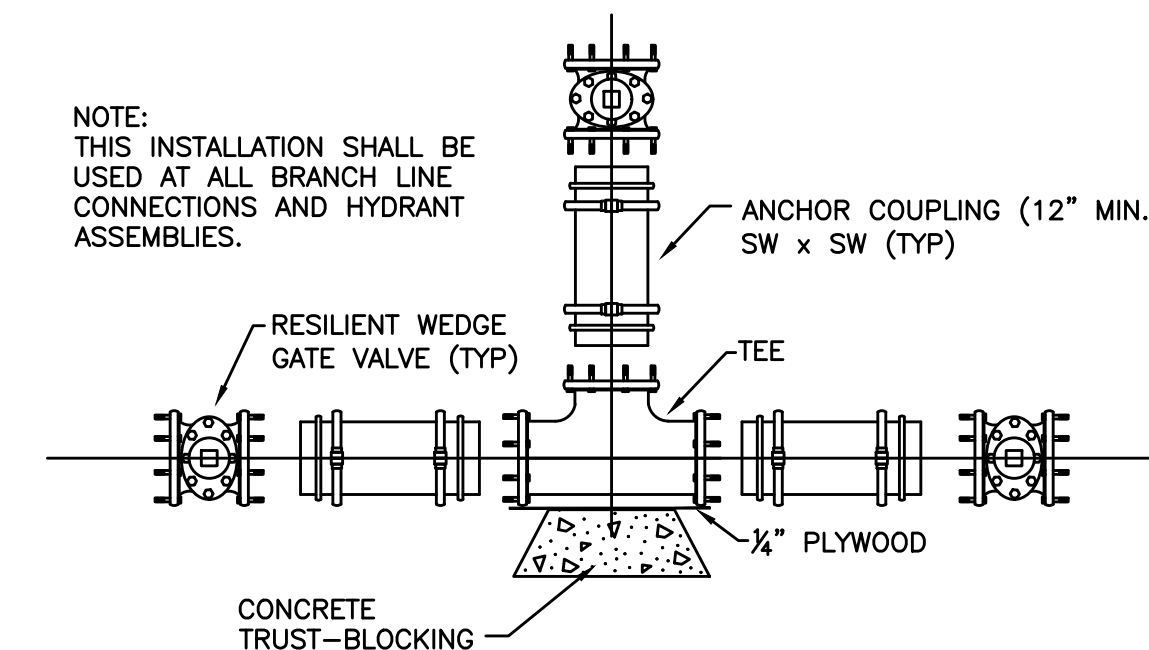
WATER MARKER DETAIL

NOT TO SCALE



TYPICAL - WET TAP

NOT TO SCALE



TEE INSTALLATION

NOT TO SCALE

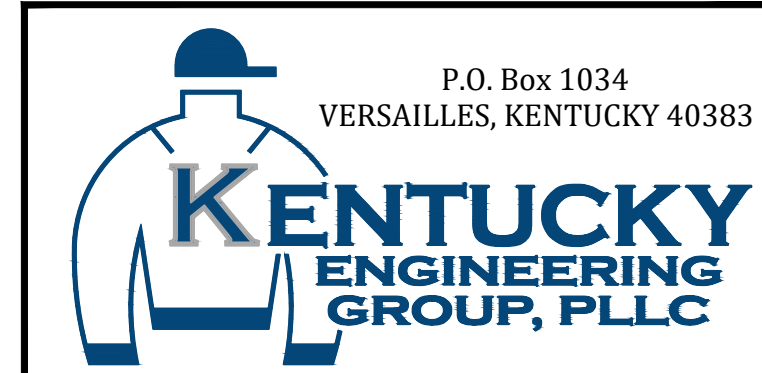
P:\PROJECTS\Grayson County Water District\18021-East - West Interconnect PH 1.DWG\18021-12.dwg REC: 3/09/20

IT IS A VIOLATION OF LAW FOR ANY PERSON TO ALTER THIS DRAWING WITHOUT WRITTEN PERMISSION FROM KENTUCKY ENGINEERING GROUP, PLLC AND ACTING UNDER THE DIRECTION OF A LICENSED ENGINEER.

THIS DRAWING WAS PREPARED AT THE SCALE INDICATED. INACCURACIES IN THE STATED SCALE MAY BE INTRODUCED WHEN DRAWINGS ARE REPRODUCED BY ANY MEANS. USE THE GRAPHIC SCALE BAR IN THE DRAWING OR TITLE BLOCK TO DETERMINE THE ACTUAL SCALE.

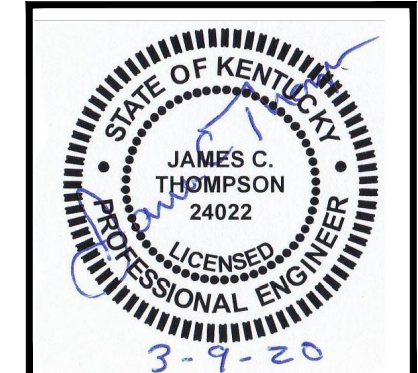
NO.	DATE	REVISIONS	BY

DATE:	MAY 2019
PROJECT MGR:	RET
DRAWN BY:	JAB
CHECKED BY:	JCT
SCALE:	AS NOTED
2019 © Kentucky Engineering Group, PLLC	



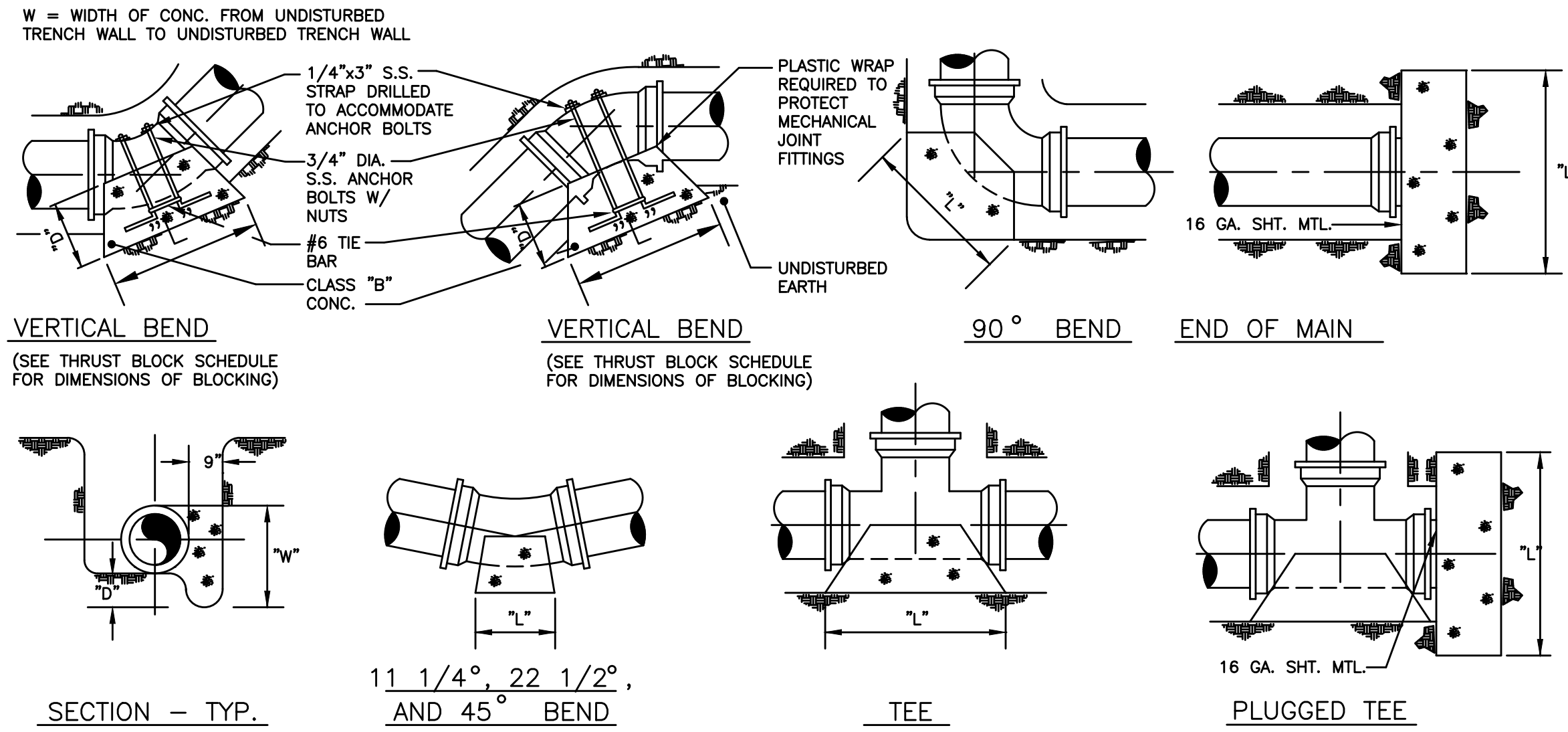
GRAYSON COUNTY WATER DISTRICT
EAST - WEST
INTERCONNECT PROJECT

STANDARD DETAILS



PROJECT NO.	18021
SHEET NO.	12

BID DOCUMENTS



NOTE: ALL FITTINGS AND VALVES SHALL INCLUDE GRIP RING GLAND

THRUST BLOCK SCHEDULE - CLASS 250 PVC

SOIL TYPE - SAND & GRAVEL BEARING STRENGTH = 3000 PSF

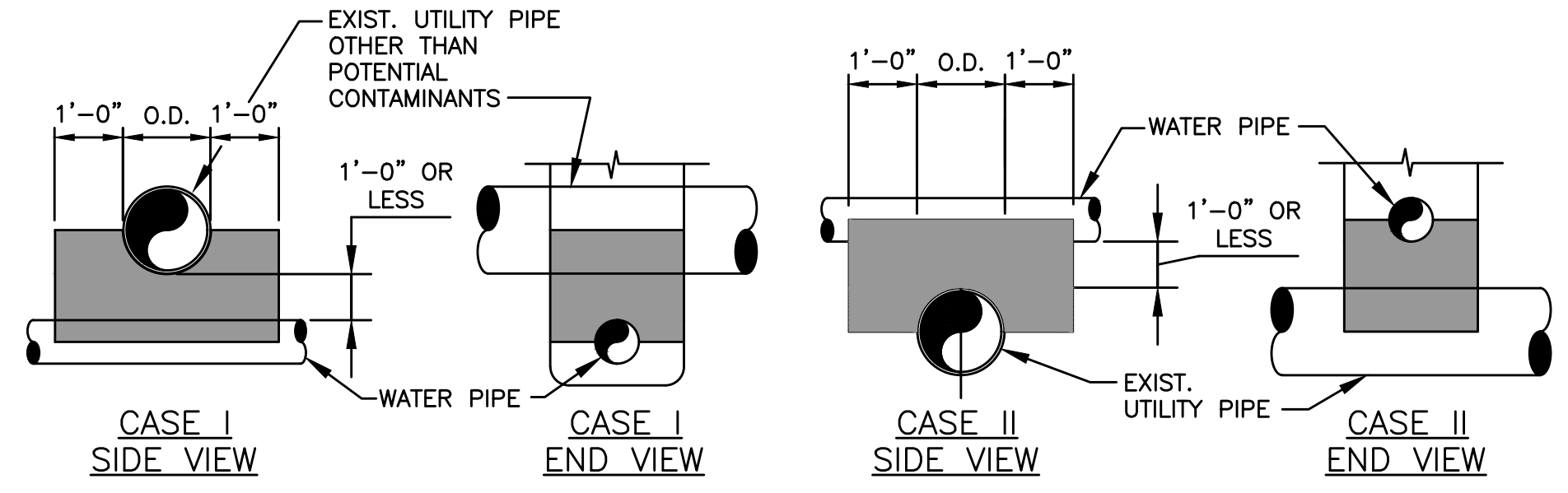
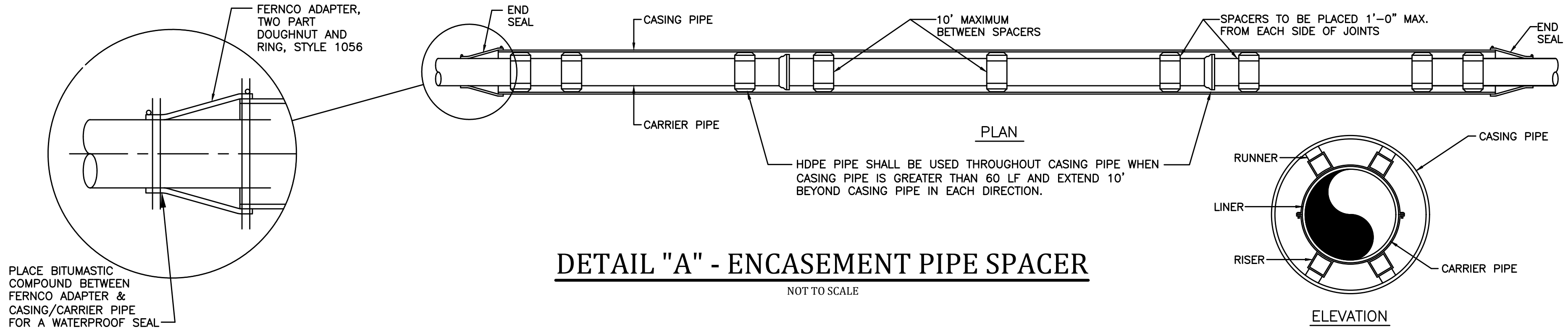
PIPE SIZE	90° BEND				45° BEND				22 1/2° BEND				11 1/4° BEND				TEE & DEAD ENDS								
	BEARING AREA	YDS OF CONCRETE	D	W	L	BEARING AREA	YDS OF CONCRETE	D	W	L	BEARING AREA	YDS OF CONCRETE	D	W	L	BEARING AREA	YDS OF CONCRETE	D	W	L	BEARING AREA	YDS OF CONCRETE	D	W	L
4"	2.667	.10	12	24	16	1.500	.06	12	18	12	.750	.03	12	12	9	.500	.01	6	12	6	1.667	.06	12	24	10
6"	5.000	.19	12	36	20	3.000	.11	12	24	18	1.500	.06	12	18	12	.750	.01	6	12	9	4.000	.15	12	24	24
8"	9.000	.50	18	36	36	5.000	.28	18	36	20	3.000	.17	18	24	18	1.500	.06	12	18	12	7.000	.39	18	42	24
10"	9.255	.78	18	48	42	7.500	.42	18	36	30	4.167	.23	18	30	20	2.250	.08	12	18	18	10.500	.58	18	42	36
12"	13.327	1.11	18	60	48	12.000	.67	18	48	36	6.000	.33	18	36	24	3.000	.11	12	24	18	14.000	.78	18	48	42
14"	18.139	2.00	24	72	54	15.750	1.17	24	54	42	7.500	.56	24	36	30	4.000	.22	18	24	24	20.000	1.48	24	60	48
16"	23.692	2.65	24	78	66	20.000	1.48	24	60	48	10.500	.78	24	42	36	5.000	.28	18	30	24	27.000	2.00	24	72	54

THRUST BLOCK SCHEDULE - CLASS 350 D.I.P.

SOIL TYPE - SAND & GRAVEL BEARING STRENGTH = 3000 PSF

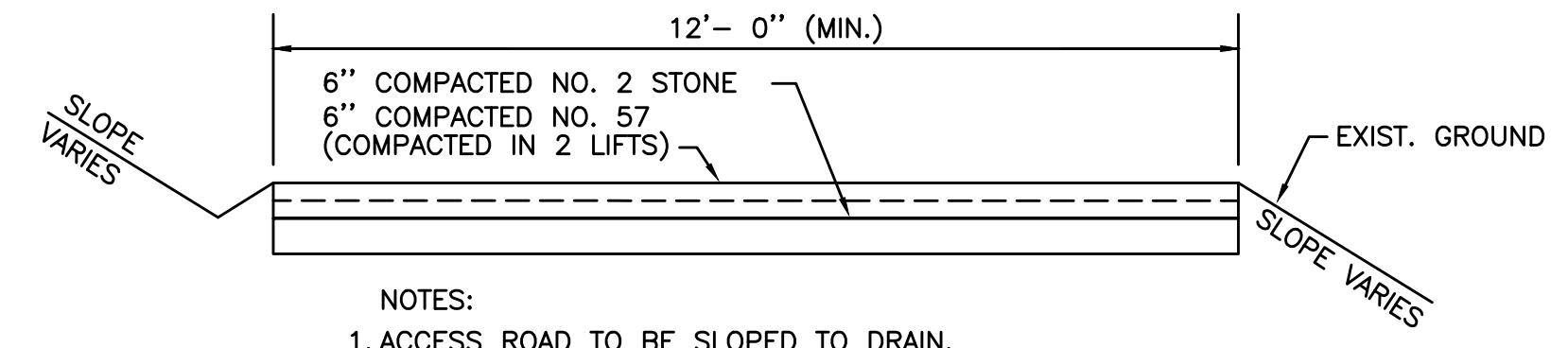
PIPE SIZE	90° BEND				45° BEND				22 1/2° BEND				11 1/4° BEND				TEE & DEAD ENDS								
	BEARING AREA	YDS OF CONCRETE	D	W	L	BEARING AREA	YDS OF CONCRETE	D	W	L	BEARING AREA	YDS OF CONCRETE	D	W	L	BEARING AREA	YDS OF CONCRETE	D	W	L	BEARING AREA	YDS OF CONCRETE	D	W	L
4"	3.750	.21	18	30	18	1.750	.10	18	18	14	1.000	.06	18	12	12	.500	.02	12	12	6	2.250	.13	18	18	18
6"	7.000	.39	18	42	24	3.750	.21	18	30	18	2.000	.11	18	24	12	1.000	.04	12	12	12	5.000	.28	18	30	24
8"	12.250	.91	24	42	42	7.500	.56	24	36	30	4.000	.30	24	24	24	2.000	.11	18	24	12	9.000	.67	24	36	36
10"	20.000	1.48	24	60	48	10.500	.78	24	42	36	6.000	.44	24	36	24	3.000	.17	18	24	18	14.000	1.04	24	48	42
12"	30.000	2.78	30	72	60	15.750	1.46	30	54	42	7.500	.69	30	36	30	4.000	.30	24	24	24	20.000	1.85	30	60	48
14"	39.000	4.33	36	78	72	20.000	2.22	36	60	48	10.500	1.17	36	42	36	6.000	.56	30	36	24	27.500	3.06	36	66	60
16"	49.000	6.35	42	84	84	27.500	3.56	42	66	60	14.000	1.81	42	48	42	7.500	.83	36	36	30	37.750	4.63	42	78	66

THRUST-BLOCKING SCHEDULE
NOT TO SCALE



- NOTES:
- CONCRETE SEPARATOR SHALL BE USED WHEN CLEARANCE BETWEEN WATER LINE AND UTILITY PIPE IS 12" OR LESS.
 - "UTILITY PIPE" INCLUDES UNDERGROUND WATER, NATURAL GAS, TELEPHONE, ELECTRICAL CONDUITS, STORM SEWER OR TYPICALLY NON-CONTAMINATING FACILITIES. WHEN CROSSING SANITARY SEWER OR POTENTIAL CONTAMINANTS SEE DETAIL "WATER/SANITARY SEWER CROSSING".
 - STEEL ENCASEMENT PIPE MAY BE USED IN LIEU OF CONCRETE ENCASEMENT AS SHOWN IN WATER/SANITARY SEWER CROSSING - ENCASEMENT DETAIL.
- W = WIDTH OF CONC. FROM UNDISTURBED

UTILITY CROSSING CONCRETE SEPARATOR
NOT TO SCALE



- NOTES:
- ACCESS ROAD TO BE SLOPED TO DRAIN.
 - REMOVE TOPSOIL TO A MINIMUM DEPTH OF 10".
 - COMPACT EXISTING SUBGRADE TO 95% STD. PROCTOR.
 - CROSS DRAINS SHALL BE INSTALLED AS REQUIRED.

ACCESS ROAD
NOT TO SCALE

P:\PROJECTS\Grayson County Water District\18021-East - West Interconnect PH 1.DWG\18021-13.dwg REC: 3/09/20

IT IS A VIOLATION OF LAW FOR ANY PERSON TO ALTER THIS DRAWING WITHOUT WRITTEN PERMISSION FROM KENTUCKY ENGINEERING GROUP, PLLC AND ACTING UNDER THE DIRECTION OF A LICENSED ENGINEER.

THIS DRAWING WAS PREPARED AT THE SCALE INDICATED. INACCURACIES IN THE STATED SCALE MAY BE INTRODUCED WHEN DRAWINGS ARE REPRODUCED BY ANY MEANS. USE THE GRAPHIC SCALE BAR IN THE DRAWING OR TITLE BLOCK TO DETERMINE THE ACTUAL SCALE.

NO.	DATE	REVISIONS	BY

DATE:	MAY 2019
PROJECT MGR:	RET
DRAWN BY:	JAB
CHECKED BY:	JCT
SCALE:	AS NOTED
2019 © Kentucky Engineering Group, PLLC	

P.O. Box 1034
VERSAILLES, KENTUCKY 40383

KENTUCKY ENGINEERING GROUP, PLLC

GRAYSON COUNTY WATER DISTRICT
EAST - WEST
INTERCONNECT PROJECT

STANDARD DETAILS

JAMES C. THOMPSON
24022
LICENSED PROFESSIONAL ENGINEER
3-9-20

PROJECT NO.	18021
SHEET NO.	13

BID DOCUMENTS