

**COMMONWEALTH OF KENTUCKY
BEFORE THE PUBLIC SERVICE COMMISSION**

In the Matter of:

Electronic Application Of Kentucky Power)	
Company For A Certificate Of Public Convenience)	
And Necessity To Construct A 138 kV)	
Transmission Line And Associated Facilities)	Case No. 2020-00062
In Pike and Floyd Counties (Kewanee-Enterprise)	
Park 138 kV Transmission Line Project))	

Kentucky Power Company's Notice of Filing Survey

In conformity with ordering paragraph four of the Public Service Commission of Kentucky's December 29, 2020 order in this case, Kentucky Power Company hereby files a survey of the final location of the transmission facilities that are the subject of this proceeding.

Respectfully submitted,



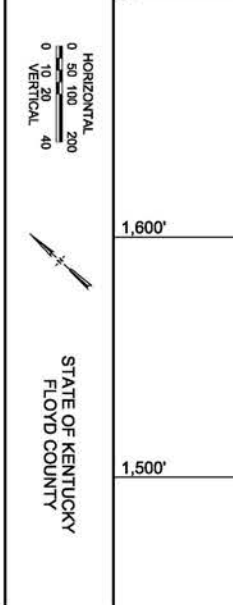
Katie M. Glass
STITES & HARBISON PLLC
421 West Main Street
P. O. Box 634
Frankfort, Kentucky 40602-0634
Telephone: (502) 223-3477
Facsimile: (502) 779-8349
kglass@stites.com

COUNSEL FOR KENTUCKY POWER
COMPANY

SW LT: (1) 7#6 ALUMOWELD @ 6,750 LBS NESV HVY (KYPCO)
 OPGW RT: (1) SFPCO-SFSJ-J-2471 @ 8,000 LBS NESV HVY (KYPCO)
 COND LT: (3) 1033.5 KCMIL ACSR CURLEW @ 11,300 LBS NESV HVY (KYPCO)
 COND RT: (3) 1033.5 KCMIL ACSR CURLEW @ 11,300 LBS NESV HVY (KYPCO)

STATE OF KENTUCKY
 PROFESSIONAL ENGINEER
 TIMOTHY N. KRITTS
 28328

REV	DESCRIPTION	DATE	BY
A	ISSUED FOR CONSTRUCTION	11/04/2021	MCG



AMERICAN ELECTRIC POWER

POWER ENGINEERS

REGISTRATION NO.: 1994010322

DATE: 11/04/2021

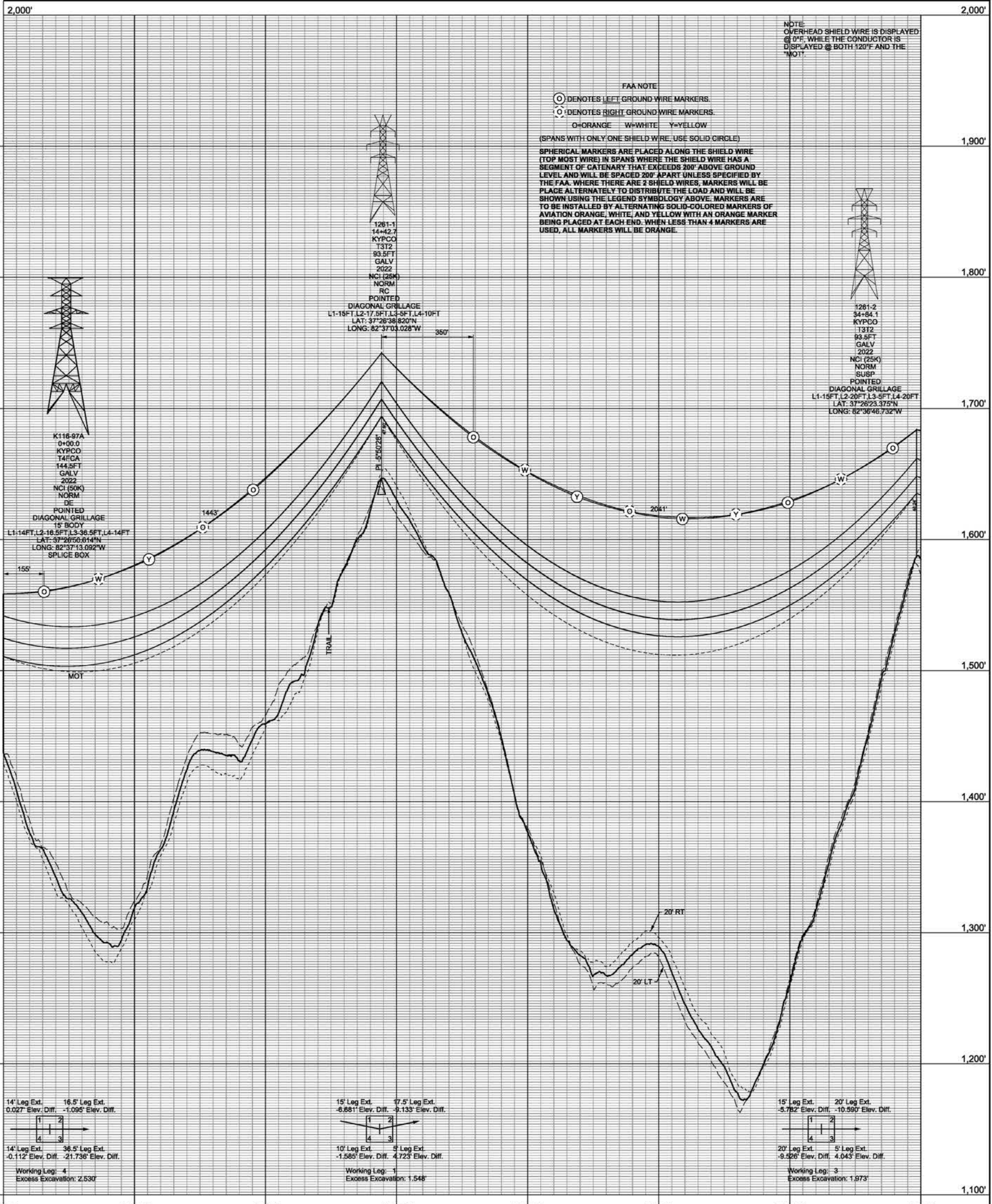
ENG BY: N.S.	CHKD BY: M.T.
DRN BY: MCG	APP BY: TNK
R/W MAP NO.:	VIA:

THIS DRAWING IS THE PROPERTY OF AMERICAN ELECTRIC POWER COMPANY AND IS TO BE USED ONLY FOR THE PROJECT AND SITE SPECIFICALLY IDENTIFIED HEREON. ANY REUSE OR MODIFICATION OF THIS DRAWING WITHOUT THE WRITTEN CONSENT OF AMERICAN ELECTRIC POWER COMPANY IS STRICTLY PROHIBITED. THE USER ASSUMES ALL LIABILITY FOR ANY ERRORS OR OMISSIONS IN THIS DRAWING.

KEWANEE 138KV EXTENSION
 (ENTERPRISE PARK ECONOMIC & AREA IMPROVEMENTS PROJECT)

PLANNING & PROFILE

EQUIP: TLM18001261
 DWG: 01281903
 SHEET: 3 REV: A

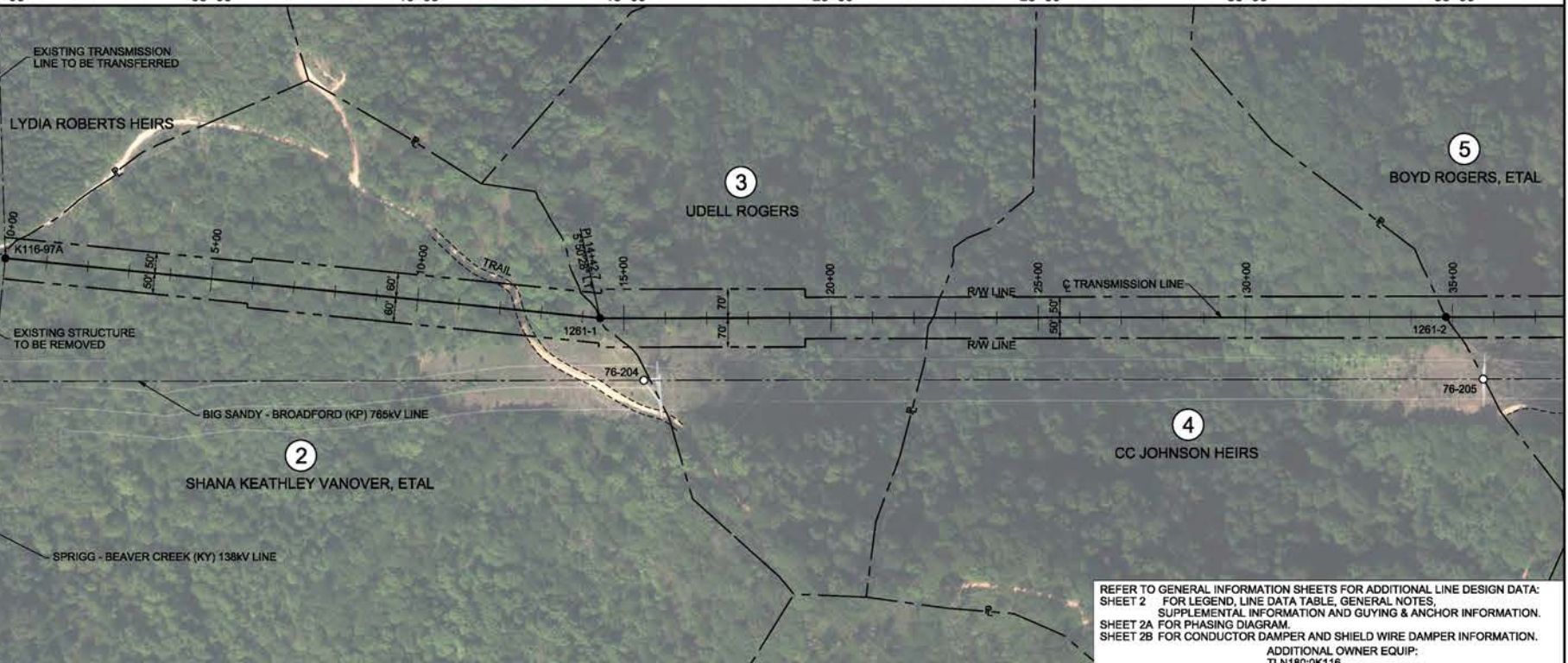


FAA NOTE

○ DENOTES LEFT GROUND WIRE MARKERS.
 ○ DENOTES RIGHT GROUND WIRE MARKERS.
 O=ORANGE W=WHITE Y=YELLOW
 (SPANS WITH ONLY ONE SHIELD WIRE, USE SOLID CIRCLE)

SPHERICAL MARKERS ARE PLACED ALONG THE SHIELD WIRE (TOP MOST WIRE) IN SPANS WHERE THE SHIELD WIRE HAS A SEGMENT OF CATENARY THAT EXCEEDS 200' ABOVE GROUND LEVEL AND WILL BE SPACED 200' APART UNLESS SPECIFIED BY THE FAA. WHERE THERE ARE 2 SHIELD WIRES, MARKERS WILL BE PLACED ALTERNATELY TO DISTRIBUTE THE LOAD AND WILL BE SHOWN USING THE LEGEND SYMBOLOLOGY ABOVE. MARKERS ARE TO BE INSTALLED BY ALTERNATING SOLID-COLORED MARKERS OF AVIATION ORANGE, WHITE, AND YELLOW WITH AN ORANGE MARKER BEING PLACED AT EACH END. WHEN LESS THAN 4 MARKERS ARE USED, ALL MARKERS WILL BE ORANGE.

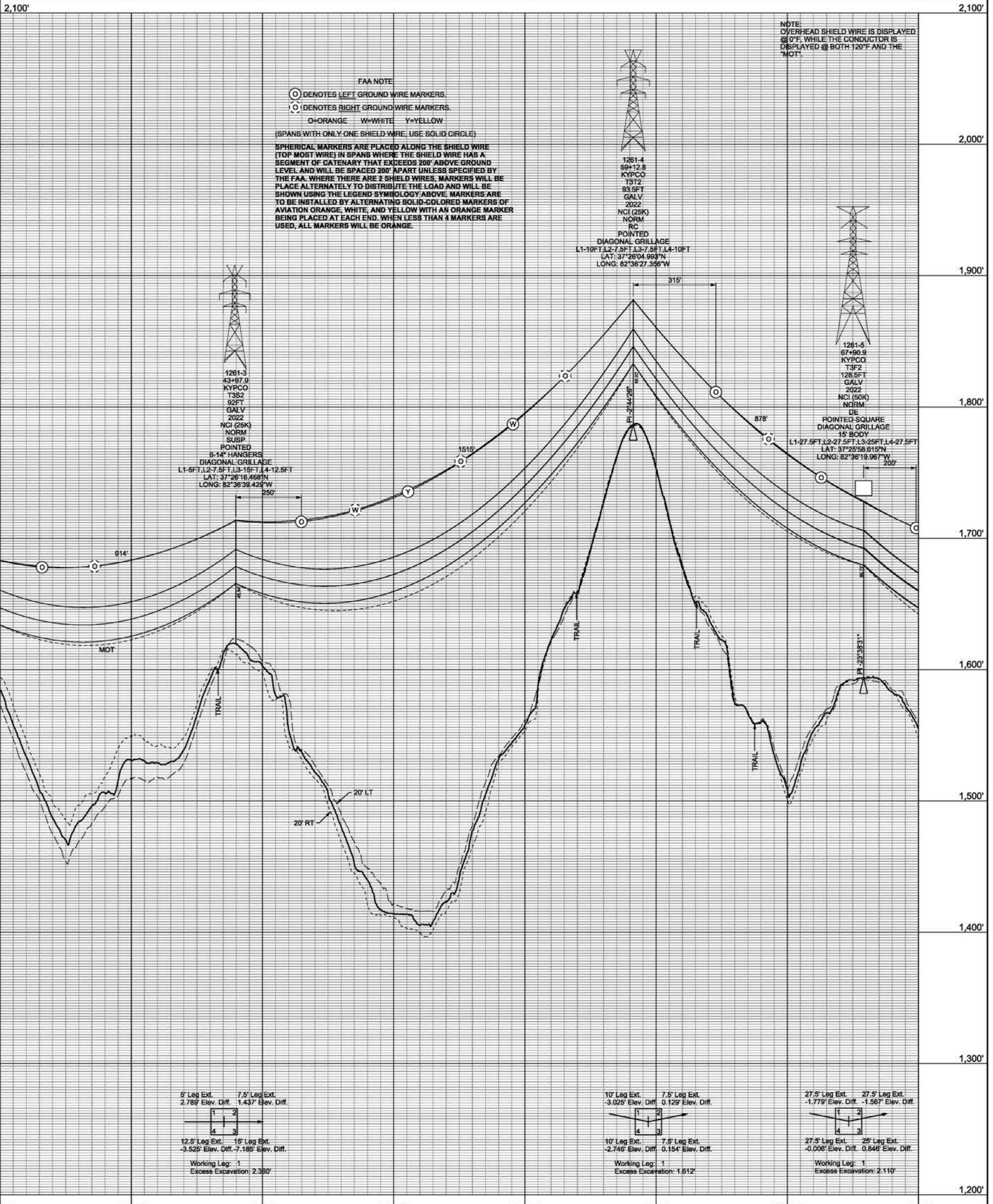
NOTE: OVERHEAD SHIELD WIRE IS DISPLAYED @ 0" P, WHILE THE CONDUCTOR IS DISPLAYED @ BOTH 120" P AND THE "MOT".



REFER TO GENERAL INFORMATION SHEETS FOR ADDITIONAL LINE DESIGN DATA:
 SHEET 2 FOR LEGEND, LINE DATA TABLE, GENERAL NOTES,
 SUPPLEMENTAL INFORMATION AND GUYING & ANCHOR INFORMATION.
 SHEET 2A FOR PHASING DIAGRAM.
 SHEET 2B FOR CONDUCTOR DAMPER AND SHIELD WIRE DAMPER INFORMATION.
 ADDITIONAL OWNER EQUIP:
 TLM18001261

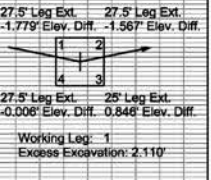
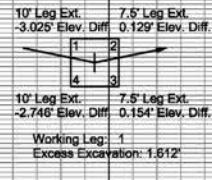
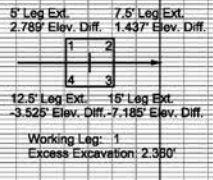
SW LT: (1) 7#6 ALUMOWELD @ 6,750 LBS NESC HVY (KYPCO)
 OPGW RT: (1) SFPOC-SFSJ-J-2471 @ 8,000 LBS NESC HVY (KYPCO)
 COND LT: (3) 1033.5 KCMIL ACSR CURLEW @ 11,300 LBS NESC HVY (KYPCO)
 COND RT: (3) 1033.5 KCMIL ACSR CURLEW @ 11,300 LBS NESC HVY (KYPCO)

SW LT: (1) 7#6 ALUMOWELD @ 6,550 LBS NESC HVY (KYPCO)
 OPGW RT: (1) SFPOC-SFSJ-J-2471 @ 7,750 LBS NESC HVY (KYPCO)
 COND LT: (3) 1033.5 KCMIL ACSR CURLEW @ 11,300 LBS NESC HVY (KYPCO)
 COND RT: (3) 1033.5 KCMIL ACSR CURLEW @ 11,300 LBS NESC HVY (KYPCO)



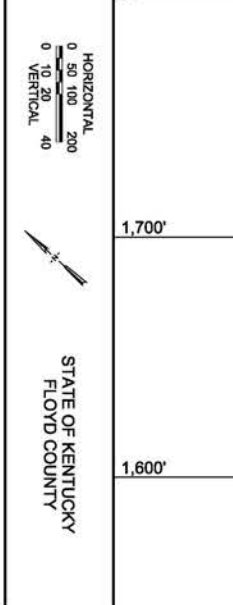
FAA NOTE
 ○ DENOTES LEFT GROUND WIRE MARKERS.
 ○ DENOTES RIGHT GROUND WIRE MARKERS.
 O=ORANGE W=WHITE Y=YELLOW
 (SPANS WITH ONLY ONE SHIELD WIRE, USE SOLID CIRCLE)
 SPHERICAL MARKERS ARE PLACED ALONG THE SHIELD WIRE (TOP MOST WIRE) IN SPANS WHERE THE SHIELD WIRE HAS A SEGMENT OF CATENARY THAT EXCEEDS 200' ABOVE GROUND LEVEL AND WILL BE SPACED 200' APART UNLESS SPECIFIED BY THE FAA. WHERE THERE ARE 2 SHIELD WIRES, MARKERS WILL BE PLACED ALTERNATELY TO DISTRIBUTE THE LOAD AND WILL BE SHOWN USING THE LEGEND SYMBOLOLOGY ABOVE. MARKERS ARE TO BE INSTALLED BY ALTERNATING SOLID-COLORED MARKERS OF AVIATION ORANGE, WHITE, AND YELLOW WITH AN ORANGE MARKER BEING PLACED AT EACH END. WHEN LESS THAN 4 MARKERS ARE USED, ALL MARKERS WILL BE ORANGE.

NOTE:
 OVERHEAD SHIELD WIRE IS DISPLAYED @ 0' F. WHILE THE CONDUCTOR IS DISPLAYED @ BOTH 120' F AND THE 'MOT'.



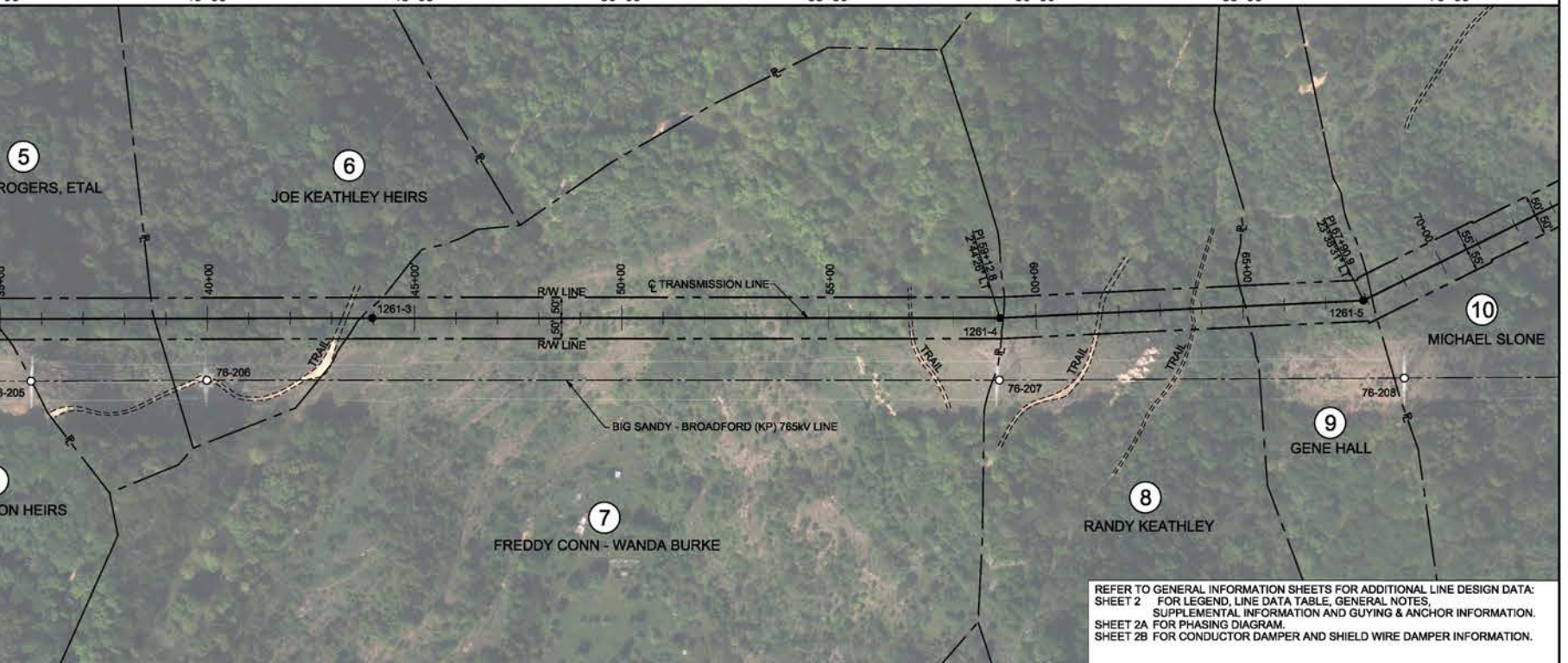
STATE OF KENTUCKY
 PROFESSIONAL ENGINEER
 TIMOTHY N. KRIBBS
 28328

REV	DESCRIPTION	DATE	BY
A	ISSUED FOR CONSTRUCTION	11/04/2021	MCG



AMERICAN ELECTRIC POWER
 POWER ENGINEERS
 REGISTRATION NO.: 1994010322
 DATE: 11/04/2021
 ENG BY: N.S.
 CHD BY: M.J.T.
 DSN BY: MCG
 APP BY: TNK
 RW MAP NO. VIA

KEWANEE 138KV EXTENSION
 (ENTERPRISE PARK ECONOMIC & AREA IMPROVEMENTS PROJECT)
 SHEET: 4 REV: A



REFER TO GENERAL INFORMATION SHEETS FOR ADDITIONAL LINE DESIGN DATA:
 SHEET 2 FOR LEGEND, LINE DATA TABLE, GENERAL NOTES,
 SUPPLEMENTAL INFORMATION AND GUYING & ANCHOR INFORMATION.
 SHEET 2A FOR PHASING DIAGRAM.
 SHEET 2B FOR CONDUCTOR DAMPER AND SHIELD WIRE DAMPER INFORMATION.

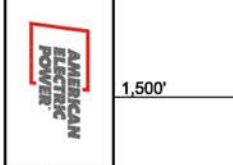
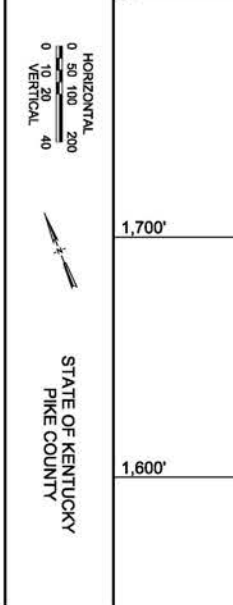
THE SEAL APPEARING ON THIS DOCUMENT IS THE PROPERTY OF THE REGISTERED PROFESSIONAL ENGINEER AND IS TO BE USED ONLY IN CONNECTION WITH THE PROJECT AND DATE ON THIS SEAL.

PROFESSIONAL ENGINEER
STATE OF KENTUCKY
TIMOTHY N. KRITTS
28328

SW LT: (1) 7#6 ALUMOWELD @ 6,550 LBS NESC HVY (KYPCCO)
 OPGW RT: (1) SFPOC-SFSJ-J-2471 @ 7,750 LBS NESC HVY (KYPCCO)
 COND LT: (3) 1033.5 KCMIL ACSR CURLEW @ 11,300 LBS NESC HVY (KYPCCO)
 COND RT: (3) 1033.5 KCMIL ACSR CURLEW @ 11,300 LBS NESC HVY (KYPCCO)

SW LT: (1) 7#6 ALUMOWELD @ 7,250 LBS NESC HVY (KYPCCO)
 OPGW RT: (1) SFPOC-SFSJ-J-2471 @ 8,500 LBS NESC HVY (KYPCCO)
 COND LT: (3) 1033.5 KCMIL ACSR CURLEW @ 11,300 LBS NESC HVY (KYPCCO)
 COND RT: (3) 1033.5 KCMIL ACSR CURLEW @ 11,300 LBS NESC HVY (KYPCCO)

REV	DESCRIPTION	DATE	BY
A	ISSUED FOR CONSTRUCTION	11/04/2021	MCG

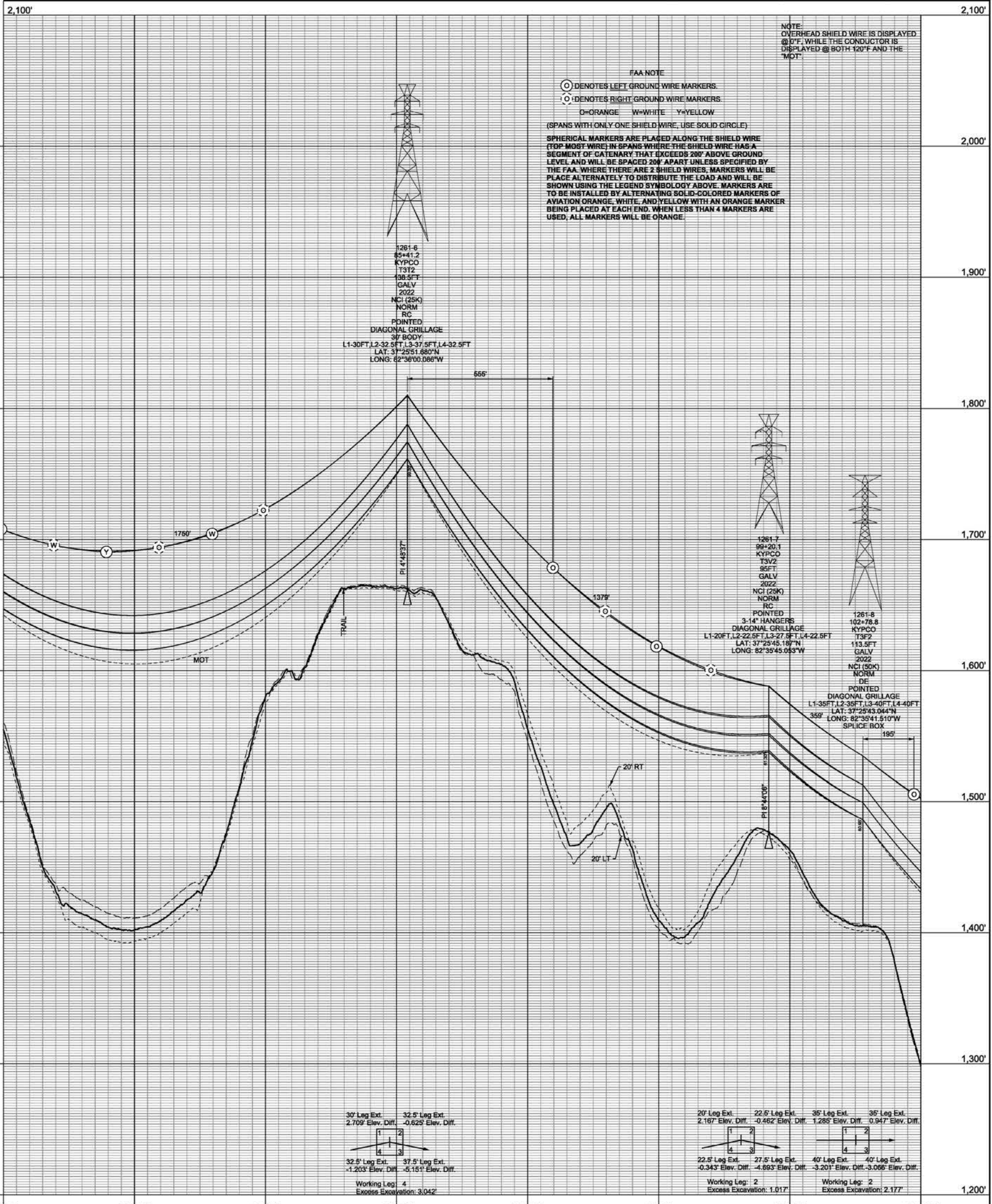


REGISTRATION NO.: 1994010222DATE: 11/04/2021	ENG BY: N.S.	CHKD BY: M.T.
DRN BY: MCG	APP BY: TNK	R/W MAP VIA NO.

KEWANEE 138KV EXTENSION
 (ENTERPRISE PARK ECONOMIC & AREA IMPROVEMENTS PROJECT)

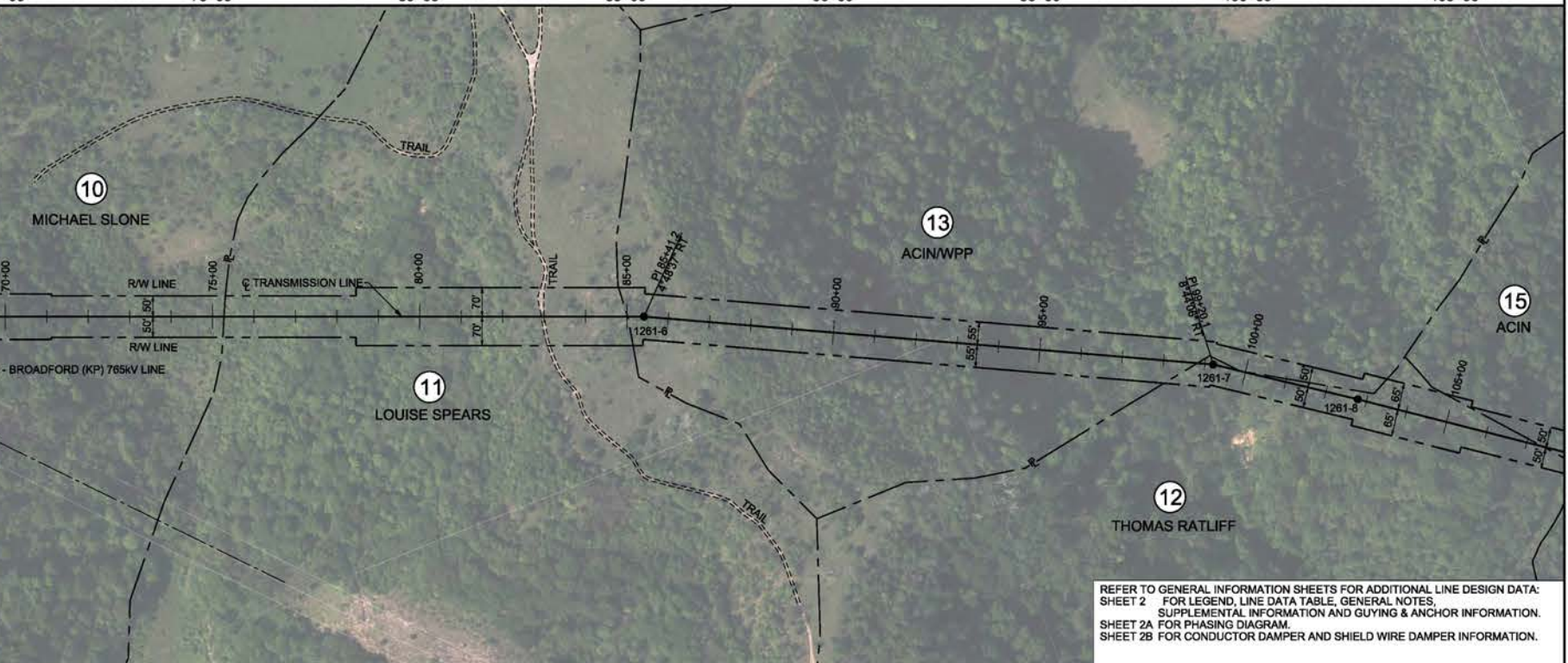
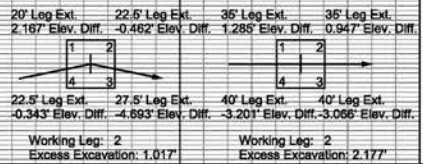
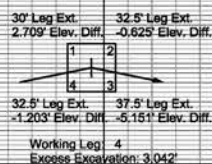
KENTUCKY POWER COMPANY

EQUIP. TLM18001261
 DWG: 01281906
 SHEET: 5 REV: A



FAA NOTE
 ○ DENOTES LEFT GROUND WIRE MARKERS.
 ○ DENOTES RIGHT GROUND WIRE MARKERS.
 O=ORANGE W=WHITE Y=YELLOW
 (SPANS WITH ONLY ONE SHIELD WIRE, USE SOLID CIRCLE)

NOTE:
 OVERHEAD SHIELD WIRE IS DISPLAYED @ 12" WHILE THE CONDUCTOR IS DISPLAYED @ BOTH 120" AND THE "MOT".



REFER TO GENERAL INFORMATION SHEETS FOR ADDITIONAL LINE DESIGN DATA:
 SHEET 2 FOR LEGEND, LINE DATA TABLE, GENERAL NOTES,
 SUPPLEMENTAL INFORMATION AND GUYING & ANCHOR INFORMATION.
 SHEET 2A FOR PHASING DIAGRAM.
 SHEET 2B FOR CONDUCTOR DAMPER AND SHIELD WIRE DAMPER INFORMATION.

SW LT: (1) 7#6 ALUMOWELD @ 7,350 LBS NESV HVY (KYPCO)
 OPGW RT: (1) SFPOC-SFSJ-J-2471 @ 8,600 LBS NESV HVY (KYPCO)
 COND LT: (3) 1033.5 KCMIL ACSR CURLEW @ 11,300 LBS NESV HVY (KYPCO)
 COND RT: (3) 1033.5 KCMIL ACSR CURLEW @ 11,300 LBS NESV HVY (KYPCO)

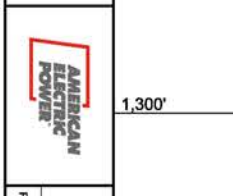
SW LT: (1) 7#6 ALUMOWELD @ 7,150 LBS NESV HVY (KYPCO)
 OPGW RT: (1) SFPOC-SFSJ-J-2471 @ 8,400 LBS NESV HVY (KYPCO)
 COND LT: (3) 1033.5 KCMIL ACSR CURLEW @ 11,300 LBS NESV HVY (KYPCO)
 COND RT: (3) 1033.5 KCMIL ACSR CURLEW @ 11,300 LBS NESV HVY (KYPCO)

STATE OF KENTUCKY
 PROFESSIONAL ENGINEER
 TIMOTHY N. KRITTS
 28328
 11/04/2021

REV	DESCRIPTION	DATE	BY
A	ISSUED FOR CONSTRUCTION	11/04/2021	MCG

HORIZONTAL SCALE: 0 50 100 200
 VERTICAL SCALE: 0 10 20 40

STATE OF KENTUCKY
 PIKE COUNTY



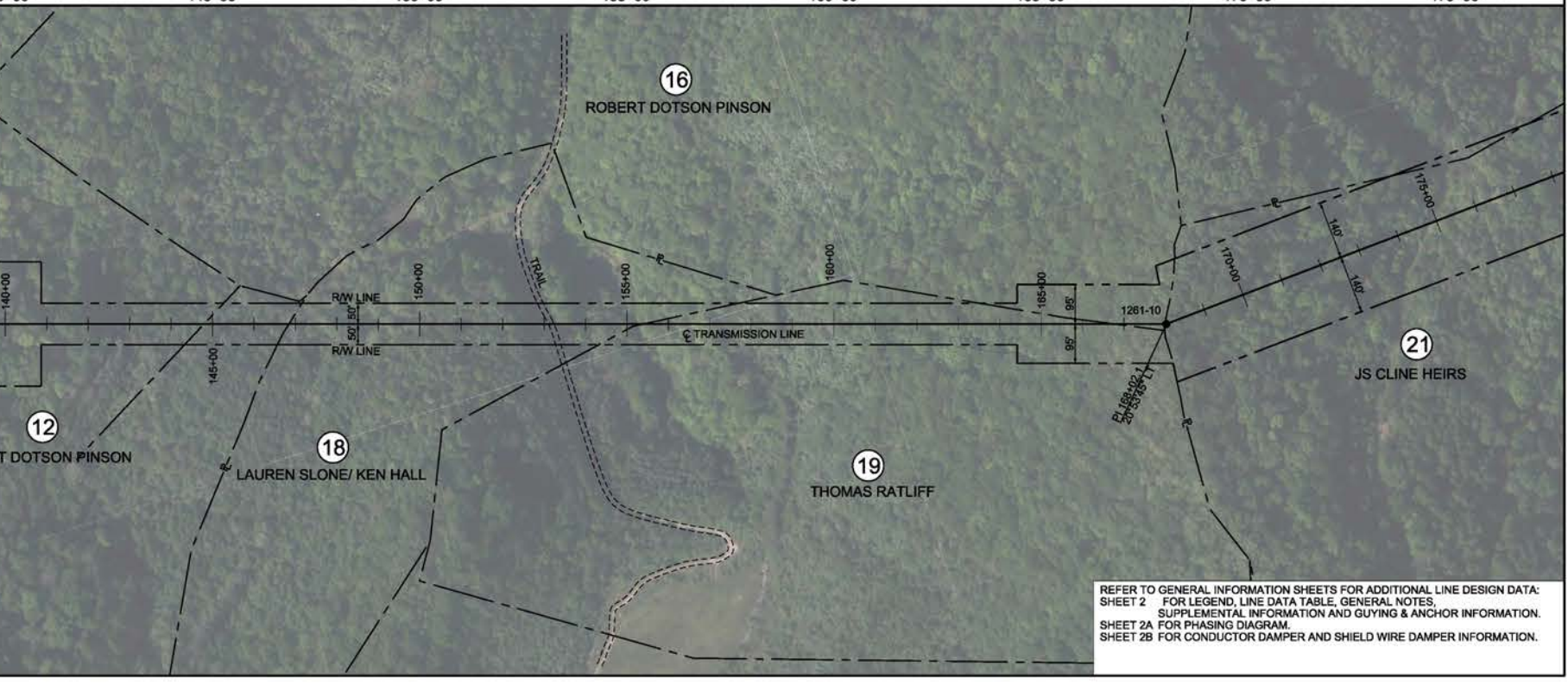
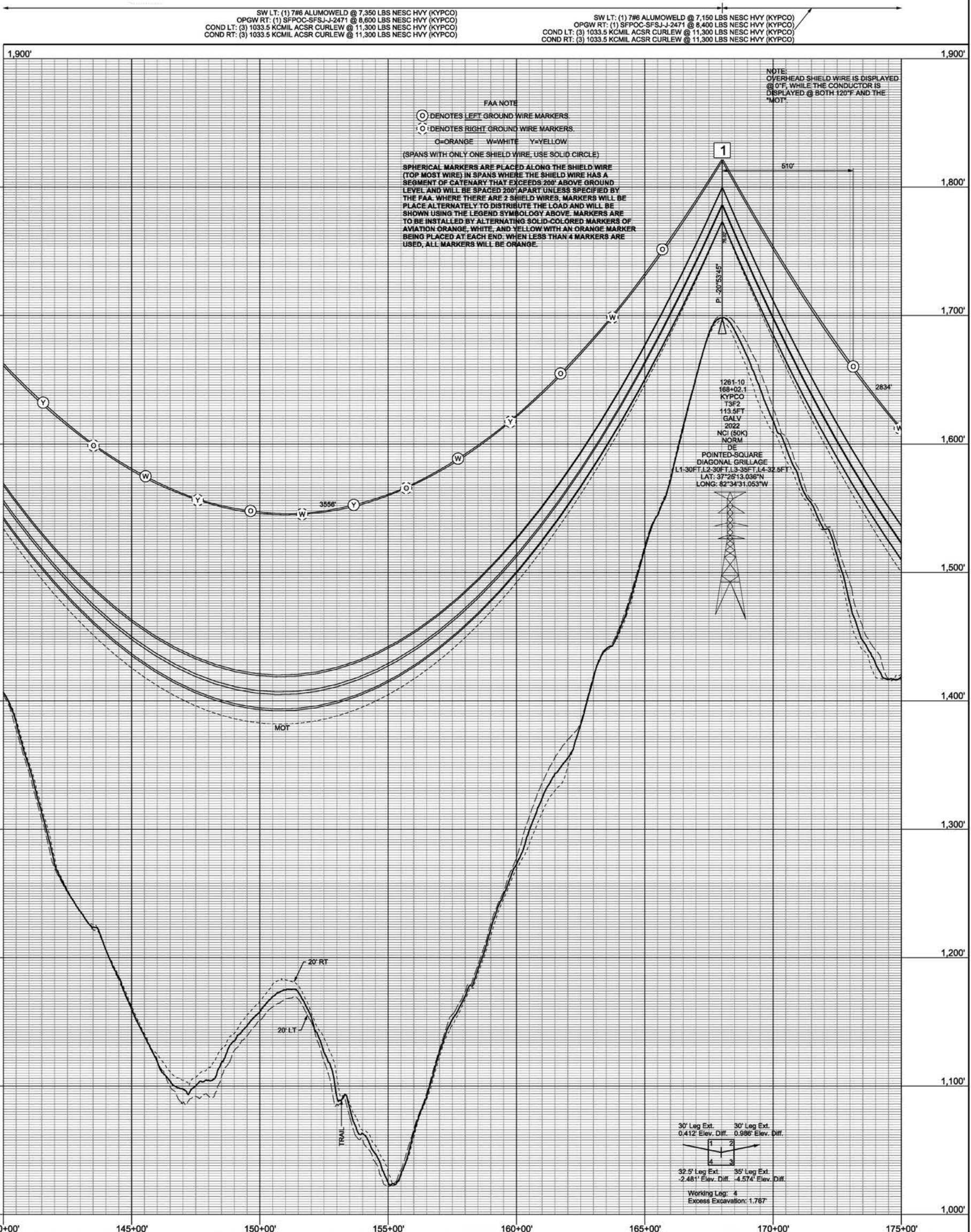
POWER ENGINEERS
 REGISTRATION NO. 1994010322

ENG BY: N.S.	CHKD BY: M.T.
DRN BY: MCG	APP BY: TNK
DATE: 11/04/2021	R/W MAP NO.:

KEWANEE 138KV EXTENSION
 (ENTERPRISE PARK ECONOMIC & AREA IMPROVEMENTS PROJECT)

PLANNING & DESIGN

EQUIP: TLM18001261
 DWG: 01281907
 SHEET: 7 REV: A



REFER TO GENERAL INFORMATION SHEETS FOR ADDITIONAL LINE DESIGN DATA:
 SHEET 2 FOR LEGEND, LINE DATA TABLE, GENERAL NOTES,
 SUPPLEMENTAL INFORMATION AND GUYING & ANCHOR INFORMATION.
 SHEET 2A FOR PHASING DIAGRAM.
 SHEET 2B FOR CONDUCTOR DAMPER AND SHIELD WIRE DAMPER INFORMATION.

SW LT: (1) 7#6 ALUMOWELD @ 7,150 LBS NESC HVY (KYPCC)
 OPGW RT: (1) SFPOC-SFSJ-J-2471 @ 8,400 LBS NESC HVY (KYPCC)
 COND LT: (3) 1033.5 KCMIL ACSR CURLEW @ 11,300 LBS NESC HVY (KYPCC)
 COND RT: (3) 1033.5 KCMIL ACSR CURLEW @ 11,300 LBS NESC HVY (KYPCC)

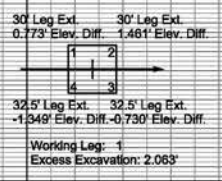
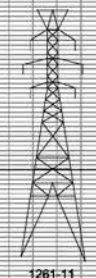
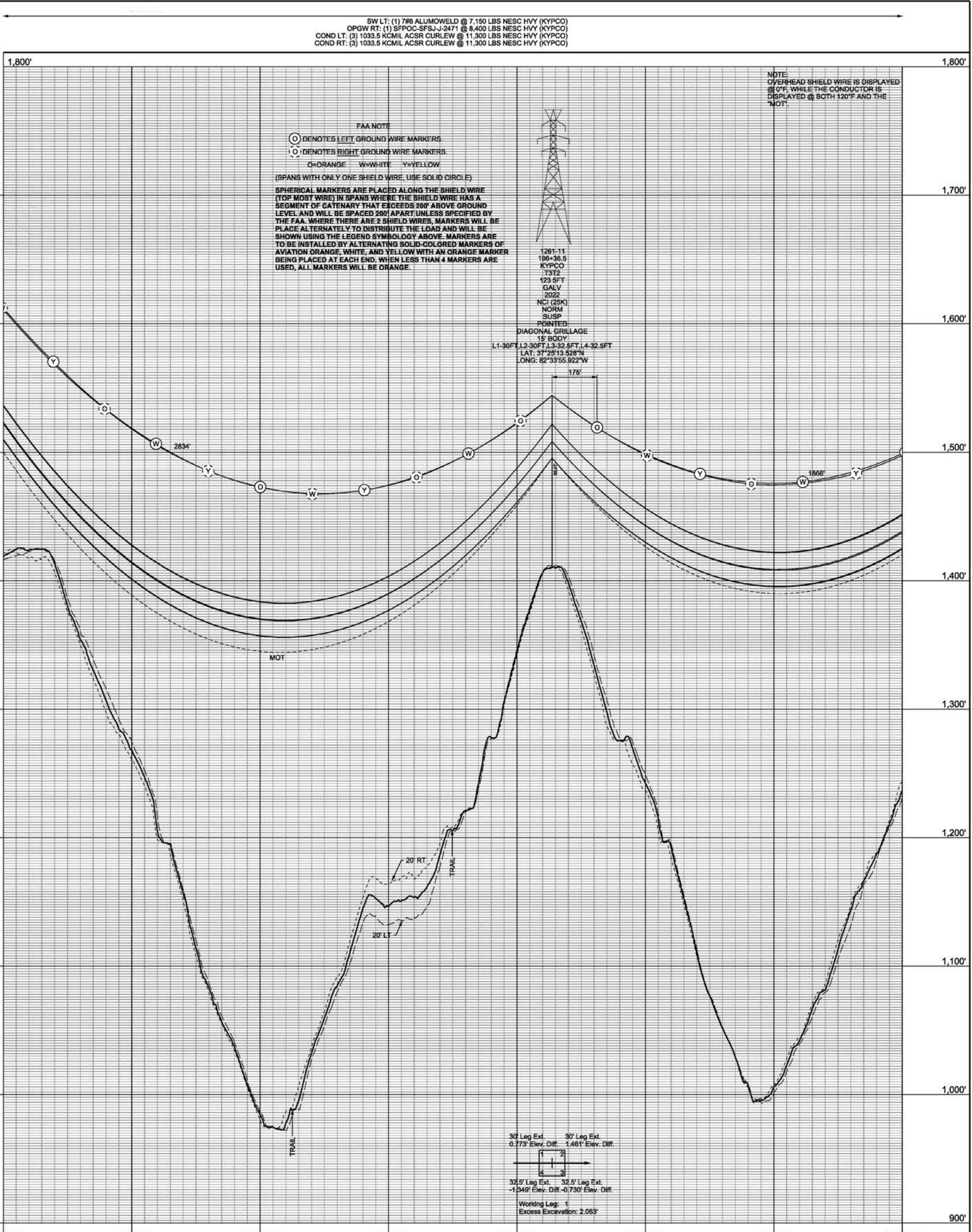
STATE OF KENTUCKY
 PROFESSIONAL ENGINEER
 TIMOTHY N. KRITTS
 28328
 LICENSE NO. 110042021

REV	DESCRIPTION	DATE	BY
A	ISSUED FOR CONSTRUCTION	11/04/2021	MCG

HORIZONTAL SCALE: 0 50 100 200
 VERTICAL SCALE: 0 10 20 40
 STATE OF KENTUCKY
 PIKE COUNTY

AMERICAN ELECTRIC POWER
 POWER ENGINEERS
 REGISTRATION NO.: 1994010322
 DATE: 11/04/2021
 ENG BY: N.S.
 CHD BY: M.J.T.
 DSN BY: MCG
 APP BY: T.N.K.
 RW MAP NO. VIA

KEWANEE 138KV EXTENSION
 (ENTERPRISE PARK ECONOMIC & AREA IMPROVEMENTS PROJECT)
 SHEET: 8 REV: A

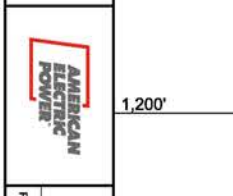
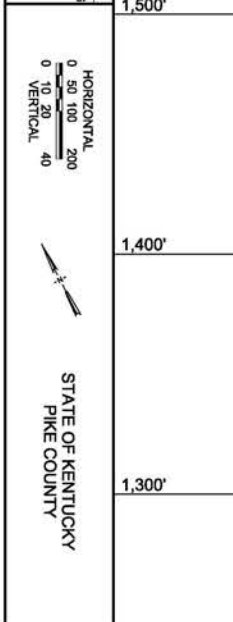


NOTE: OVERHEAD SHIELD WIRE IS DISPLAYED @ 0\"/>



THE SEAL APPEARING ON THIS DOCUMENT IS THE PROPERTY OF THE BOARD OF PROFESSIONAL ENGINEERS OF THE STATE OF KENTUCKY. IT IS TO BE USED ONLY BY THE ENGINEER TO WHOM IT IS ISSUED AND IS NOT TO BE REPRODUCED OR COPIED IN ANY MANNER WITHOUT THE WRITTEN PERMISSION OF THE BOARD OF PROFESSIONAL ENGINEERS OF THE STATE OF KENTUCKY.

REV	DESCRIPTION	DATE	BY
A	ISSUED FOR CONSTRUCTION	11/04/2021	MCG

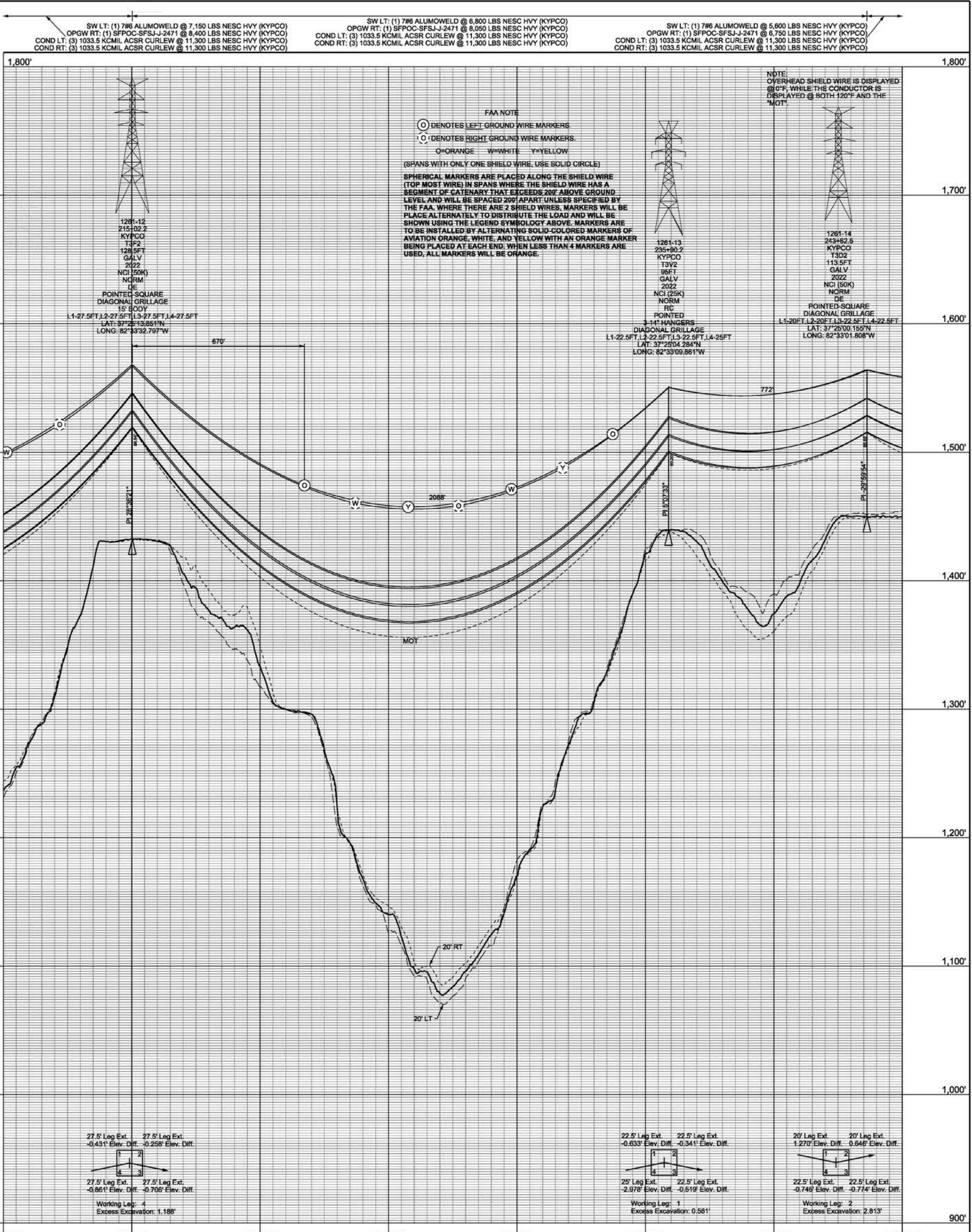


REGISTRATION NO.: 1994010322	ENG BY: N.S.	CHKD BY: M.T.
DATE: 11/04/2021	DEN BY: MCG	APP BY: TNK
	R/W MAP NO.:	VIA:

THIS DRAWING IS THE PROPERTY OF AMERICAN ELECTRIC POWER AND IS TO BE USED ONLY FOR THE PROJECT AND SITE SPECIFICALLY IDENTIFIED HEREON. IT IS NOT TO BE REPRODUCED OR COPIED IN ANY MANNER WITHOUT THE WRITTEN PERMISSION OF AMERICAN ELECTRIC POWER. ANY REUSE OF THIS DRAWING FOR ANY OTHER PROJECT WITHOUT THE WRITTEN PERMISSION OF AMERICAN ELECTRIC POWER IS STRICTLY PROHIBITED.

KEMAWEE 138KV EXTENSION
(ENTERPRISE PARK ECONOMIC & AREA IMPROVEMENTS PROJECT)

EQUIP. TLM18001261
DWG. 01261S08
SHEET: 9 REV: A



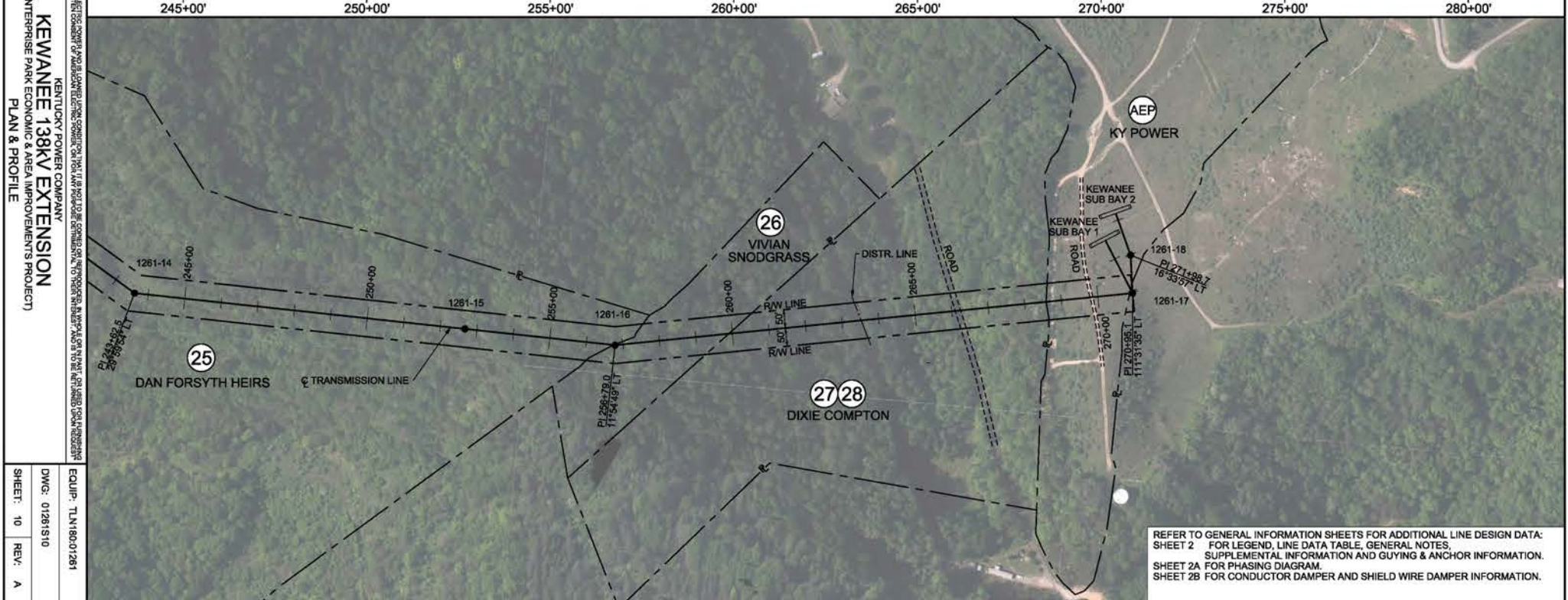
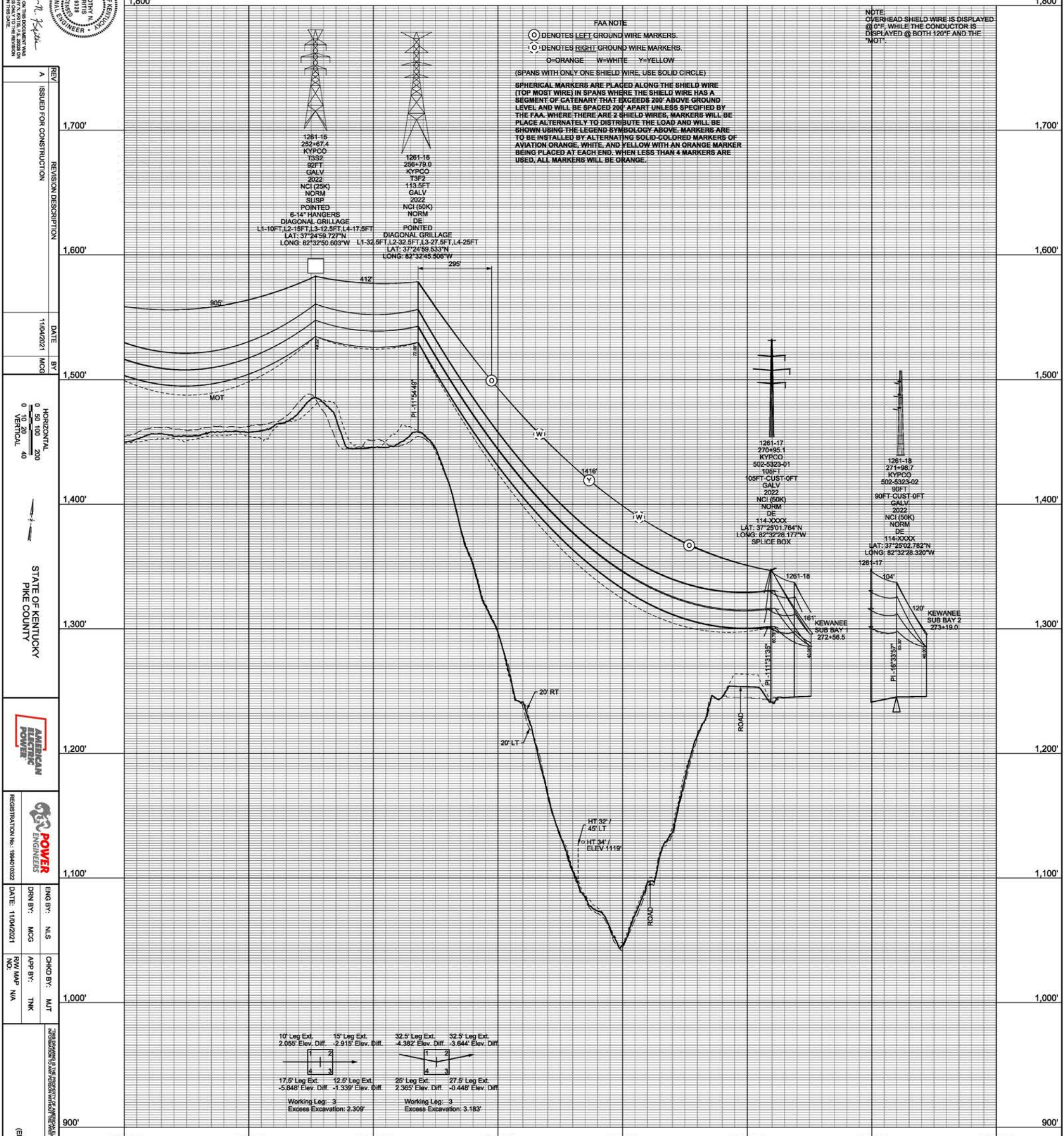
SW LT: (1) 7#6 ALUMOWELD @ 5,600 LBS NESCH HVY (KYPCO)
 OPGW RT: (1) SFPOC-SFS-J-2471 @ 6,750 LBS NESCH HVY (KYPCO)
 COND LT: (3) 1033.5 KCMIL ACSR CURLEW @ 11,300 LBS NESCH HVY (KYPCO)
 COND RT: (3) 1033.5 KCMIL ACSR CURLEW @ 11,300 LBS NESCH HVY (KYPCO)

SW LT: (1) 7#6 ALUMOWELD @ 6,450 LBS NESCH HVY (KYPCO)
 OPGW RT: (1) SFPOC-SFS-J-2471 @ 7,650 LBS NESCH HVY (KYPCO)
 COND LT: (3) 1033.5 KCMIL ACSR CURLEW @ 11,300 LBS NESCH HVY (KYPCO)
 COND RT: (3) 1033.5 KCMIL ACSR CURLEW @ 11,300 LBS NESCH HVY (KYPCO)

SW: (1) 7#6 ALUMOWELD @ 1,050 LBS NESCH HVY (KYPCO)
 COND: (3) 1033.5 KCMIL ACSR CURLEW @ 3,000 LBS NESCH HVY (KYPCO)

SW LT: (1) 7#6 ALUMOWELD @ 1,800 LBS NESCH HVY (KYPCO)
 SW RT: (1) 7#6 ALUMOWELD @ 1,800 LBS NESCH HVY (KYPCO)
 COND: (3) 1033.5 KCMIL ACSR CURLEW @ 2,900 LBS NESCH HVY (KYPCO)

SW LT: (1) 7#6 ALUMOWELD @ 1,350 LBS NESCH HVY (KYPCO)
 SW RT: (1) 7#6 ALUMOWELD @ 1,350 LBS NESCH HVY (KYPCO)
 COND: (3) 1033.5 KCMIL ACSR CURLEW @ 2,900 LBS NESCH HVY (KYPCO)

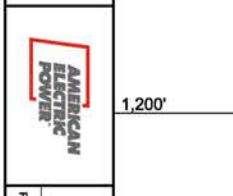


STATE OF KENTUCKY
 PROFESSIONAL ENGINEER
 TIMOTHY N. KRITTS
 28328

REV	DESCRIPTION	DATE	BY
A	ISSUED FOR CONSTRUCTION	11/04/2021	MCG

HORIZONTAL SCALE: 1" = 100'
 VERTICAL SCALE: 1" = 40'

STATE OF KENTUCKY
 PIKE COUNTY



REGISTRATION NO.: 1994010322	ENG BY: N.S.	CHKD BY: M.T.
DATE: 11/04/2021	DEN BY: MCG	APP BY: T.N.K.
	R/W MAP NO.:	VIA:

THIS DRAWING IS THE PROPERTY OF AMERICAN ELECTRIC POWER COMPANY AND IS NOT TO BE REPRODUCED OR TRANSMITTED IN ANY FORM OR BY ANY MEANS, ELECTRONIC OR MECHANICAL, INCLUDING PHOTOCOPYING, RECORDING, OR BY ANY INFORMATION STORAGE AND RETRIEVAL SYSTEM, WITHOUT THE WRITTEN PERMISSION OF AMERICAN ELECTRIC POWER COMPANY.

KEWANEE 138KV EXTENSION
 (ENTERPRISE PARK ECONOMIC & AREA IMPROVEMENTS PROJECT)

EQUIP. T.N.18001261
 DWG. 01261S10
 SHEET: 10 REV: A

FAA NOTE
 ○ DENOTES LEFT GROUND WIRE MARKERS.
 ○ DENOTES RIGHT GROUND WIRE MARKERS.
 O=ORANGE W=WHITE Y=YELLOW
 (SPANS WITH ONLY ONE SHIELD WIRE, USE SOLID CIRCLE)
 SPHERICAL MARKERS ARE PLACED ALONG THE SHIELD WIRE (TOP MOST WIRE) IN SPANS WHERE THE SHIELD WIRE HAS A SEGMENT OF CATERWY THAT EXCEEDS 200' ABOVE GROUND LEVEL AND WILL BE SPACED 200' APART UNLESS SPECIFIED BY THE FAA. WHERE THERE ARE 2 SHIELD WIRES, MARKERS WILL BE PLACED ALTERNATELY TO DISTRIBUTE THE LOAD AND WILL BE SHOWN USING THE LEGEND SYMBOLOLOGY ABOVE. MARKERS ARE TO BE INSTALLED BY ALTERNATING SOLID-COLORED MARKERS OF AVIATION ORANGE, WHITE, AND YELLOW WITH AN ORANGE MARKER BEING PLACED AT EACH END. WHEN LESS THAN 4 MARKERS ARE USED, ALL MARKERS WILL BE ORANGE.

NOTE:
 OVERHEAD SHIELD WIRE IS DISPLAYED @ 0°F. WHILE THE CONDUCTOR IS DISPLAYED @ BOTH 120°F AND THE "MOT".

10' Leg Ext. 2.065' Elev. Diff.	15' Leg Ext. -2.915' Elev. Diff.	32.5' Leg Ext. -4.362' Elev. Diff.	32.5' Leg Ext. -3.644' Elev. Diff.
17.5' Leg Ext. -5.848' Elev. Diff.	12.5' Leg Ext. -1.339' Elev. Diff.	25' Leg Ext. 2.365' Elev. Diff.	27.5' Leg Ext. -0.448' Elev. Diff.
Working Leg: 3 Excess Excavation: 2.309'		Working Leg: 3 Excess Excavation: 3.183'	

REFER TO GENERAL INFORMATION SHEETS FOR ADDITIONAL LINE DESIGN DATA:
 SHEET 2 FOR LEGEND, LINE DATA TABLE, GENERAL NOTES,
 SUPPLEMENTAL INFORMATION AND GUYING & ANCHOR INFORMATION.
 SHEET 2A FOR PHASING DIAGRAM.
 SHEET 2B FOR CONDUCTOR DAMPER AND SHIELD WIRE DAMPER INFORMATION.