

SMALL LINE REPLACEMENTS CONTRACT 1



**Warren County
Water District**

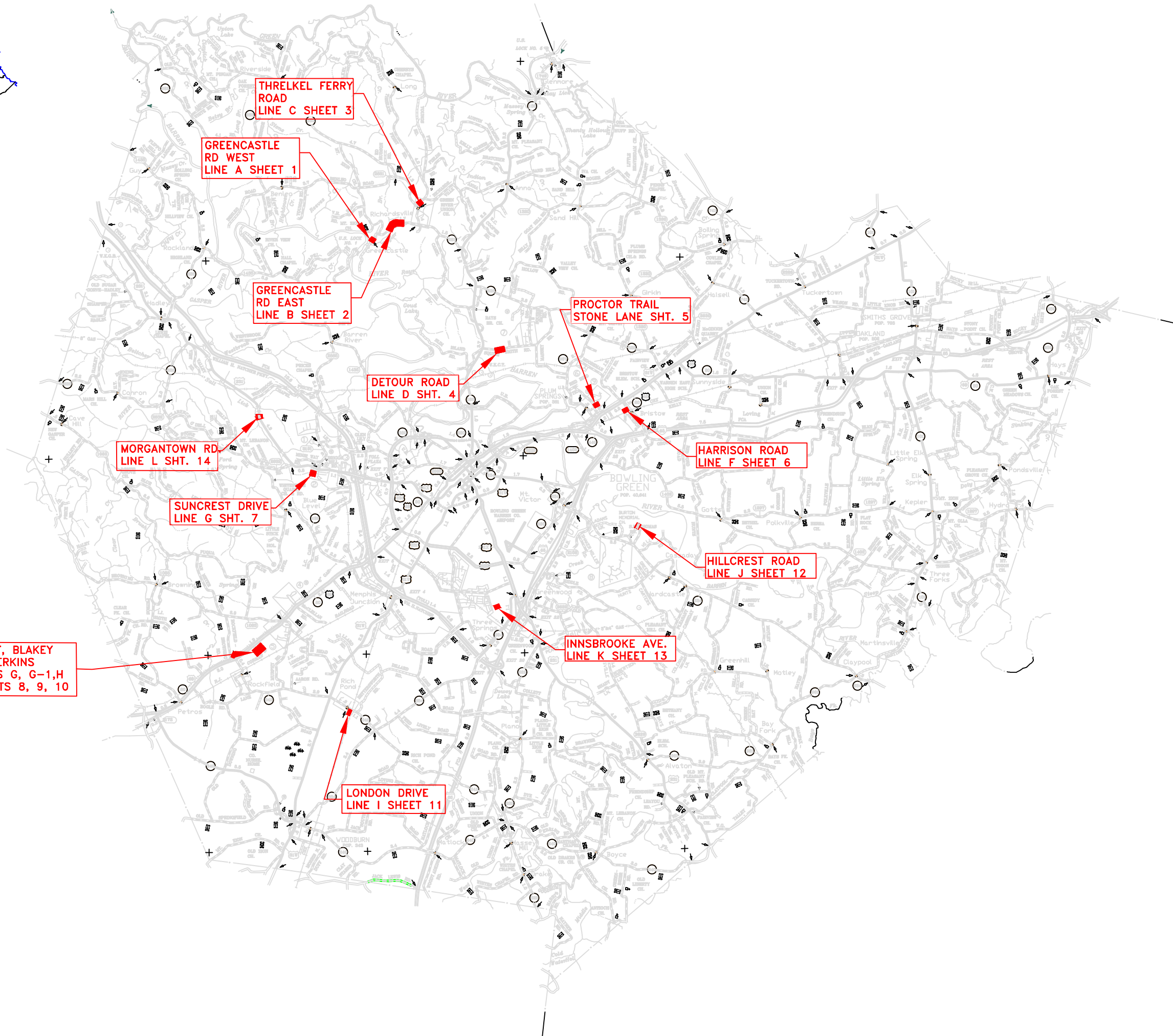
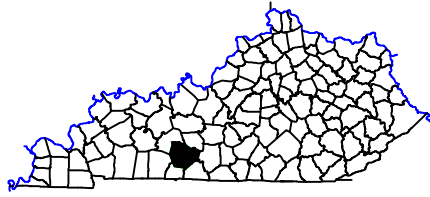


2018 LINE REPLACEMENTS INDEX OF DRAWINGS

<u>SHEET #</u>	<u>DESCRIPTION</u>	<u>SHEET #</u>	<u>DESCRIPTION</u>
1	LINE A GREENCASTLE ROAD WEST	9	METER CONNECTIONS PERKINS & BLAKEY STREETS
2	LINE B GREENCASTLE ROAD EAST	10	LINE H & H2 PERKINS & BLAKEY STREETS
3	LINE C THRELKEL FERRY ROAD	11	LINE I LONDON DRIVE
4	LINE D DETOUR ROAD	12	LINE J HILLCREST ROAD
5	LINE E PROCTOR TRAIL AREA	13	LINE K INNSBROOKE AVENUE
6	LINE F HARRISON ROAD	14	LINE L MORGANTOWN ROAD
7	LINE G SUNCREST DRIVE	WD	WATER DETAIL
8	LINE G & G-1 DUKE STREET	ECD	EROSION CONTROL DETAIL

523 US Hwy 31-W Bypass / P.O. Box 10180
Bowling Green, KY 42102-4780
TEL 270.842.0052
FAX 270.842.8360
www.warrenwater.com

SET # _____



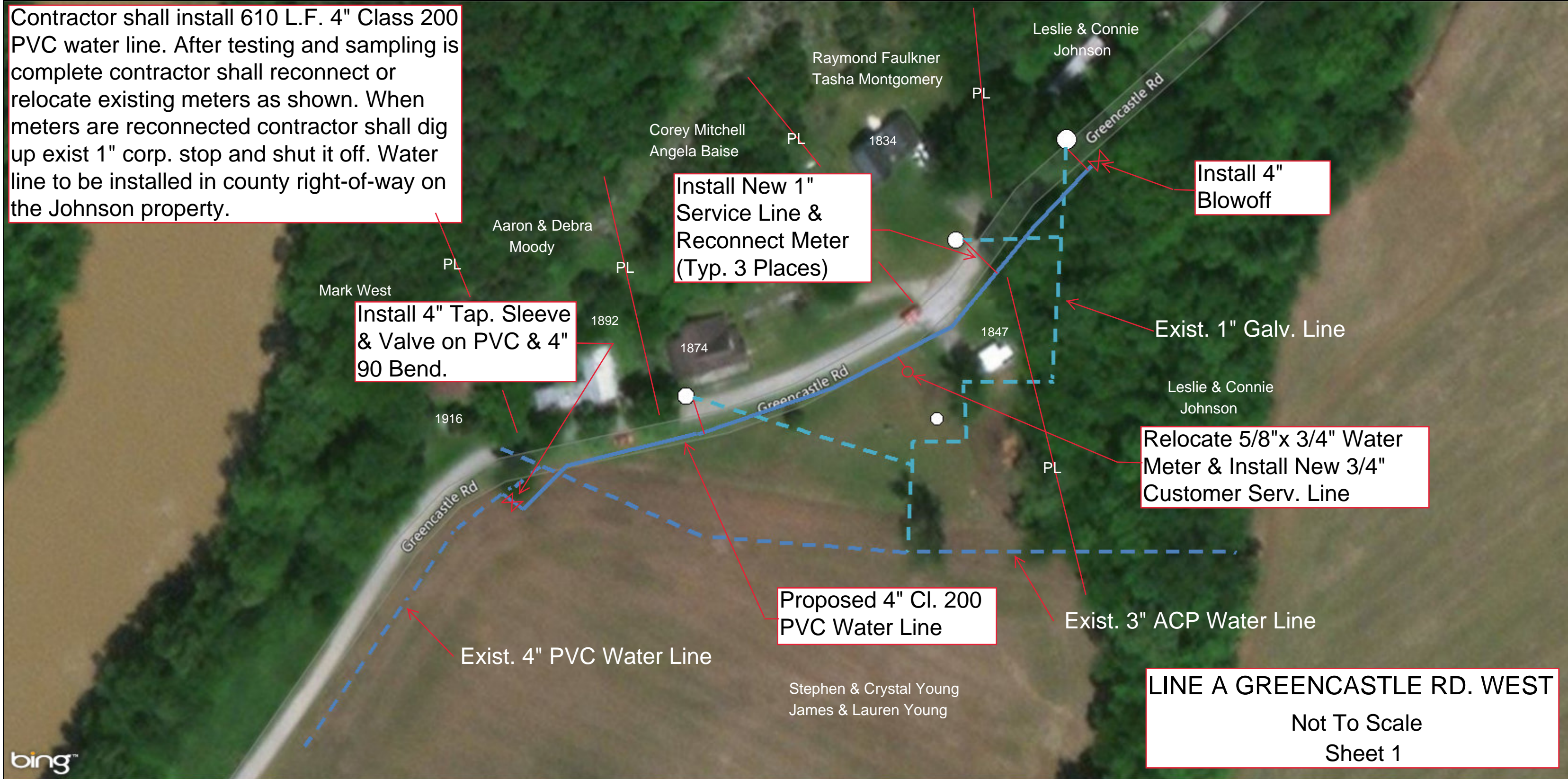
SCALE:
DATE: 8/29/2018
PROJECT #: 4088
DESIGNED:
DRAWN:
CHECKED:

REVISIONS:	
NO.:	DATE:
1	12/16/19

SHEET:

ArcGIS Web Map

Contractor shall install 610 L.F. 4" Class 200 PVC water line. After testing and sampling is complete contractor shall reconnect or relocate existing meters as shown. When meters are reconnected contractor shall dig up exist 1" corp. stop and shut it off. Water line to be installed in county right-of-way on the Johnson property.



Install 4" Tap. Sleeve & Valve on PVC & 4" 90 Bend.

Install New 1" Service Line & Reconnect Meter (Typ. 3 Places)

Install 4" Blowoff

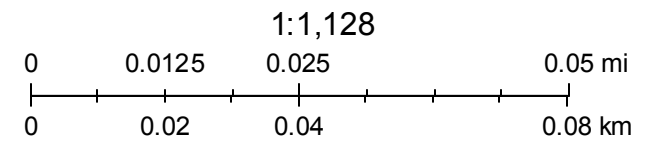
Relocate 5/8"x 3/4" Water Meter & Install New 3/4" Customer Serv. Line

Proposed 4" Cl. 200 PVC Water Line

LINE A GREENCASTLE RD. WEST
Not To Scale
Sheet 1

December 27, 2017

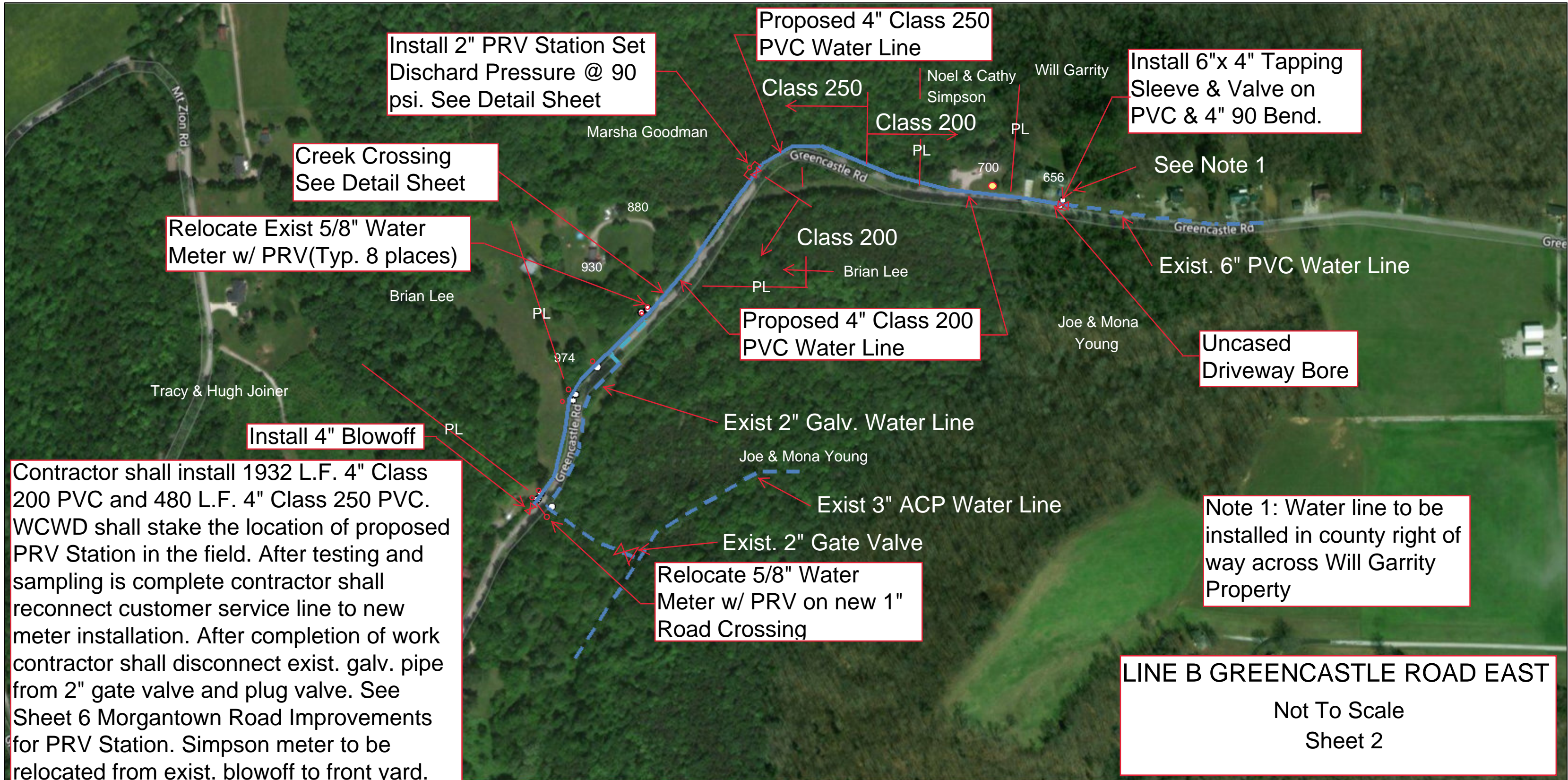
- | | | | | | |
|-----------------------|-----------------------------|-------------|---------------|----------------------|--------------|
| ssCasingPipe | ssMasterMeter | Bend 22 1/2 | Plug | Force Main | Tank Service |
| ssControlValve | SystemValve | Bend 45 | Reducer | Lateral | |
| Air Release | Gate | Bend 90 | Sleeve | Gravity Main | |
| Simple Check | Manhole | Cap | Tap | SewerAsBuiltDrawings | |
| SewerService | SanitarySewerFitting | Coupling | Tee | ConstructionLine | |
| Network Structure | Bend | Cross | ssPointOnLine | AbandonedLine | |
| | Bend 11 1/4 | | | | |



© 2017 DigitalGlobe ©CNES (2017) Distribution Airbus DS © 2017 HERE © 2017 Microsoft Corporation

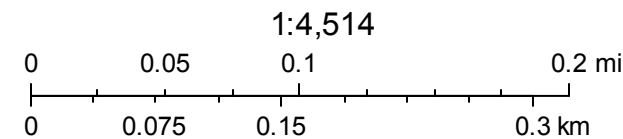


ArcGIS Web Map



December 27, 2017

ssCasingPipe	SystemValve	Bend 45	Reducer	SewerAsBuiltDrawings
ssControlValve	Gate	Bend 90	Sleeve	ConstructionLine
Air Release	Manhole	Cap	Tap	AbandonedLine
Simple Check	SanitarySewerFitting	Coupling	Tee	Tank Service
Network Structure	Bend	Cross	Force Main	
ssMasterMeter	Bend 11 1/4	Plug	Gravity Main	
	Bend 22 1/2			



© 2017 DigitalGlobe ©CNES (2017) Distribution Airbus DS © 2017 HERE © 2017 Microsoft Corporation



ArcGIS Web Map



Contractor shall install 150 L.F. 2" Class 200 PVC water line. After testing and sampling is complete contractor shall reconnect exist service line to new 2" PVC water line.

Reconnect 5/8" Water meter to New 3/4" Service Line (Typ. 3 Places This Sht.)

Proposed 2" Cl. 200 PVC Water Line

Contractor shall plug exist 2" water line

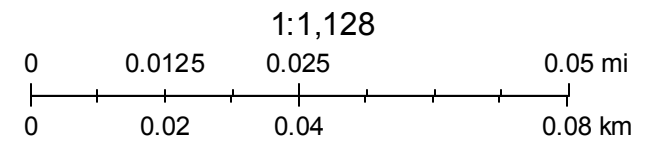
Install 3"x 2" Service Saddle on ACP & 2" Gate Valve

Install 2" Blowoff

LINE C THRELKEL FERRY ROAD
Not To Scale
Sheet 3

December 27, 2017

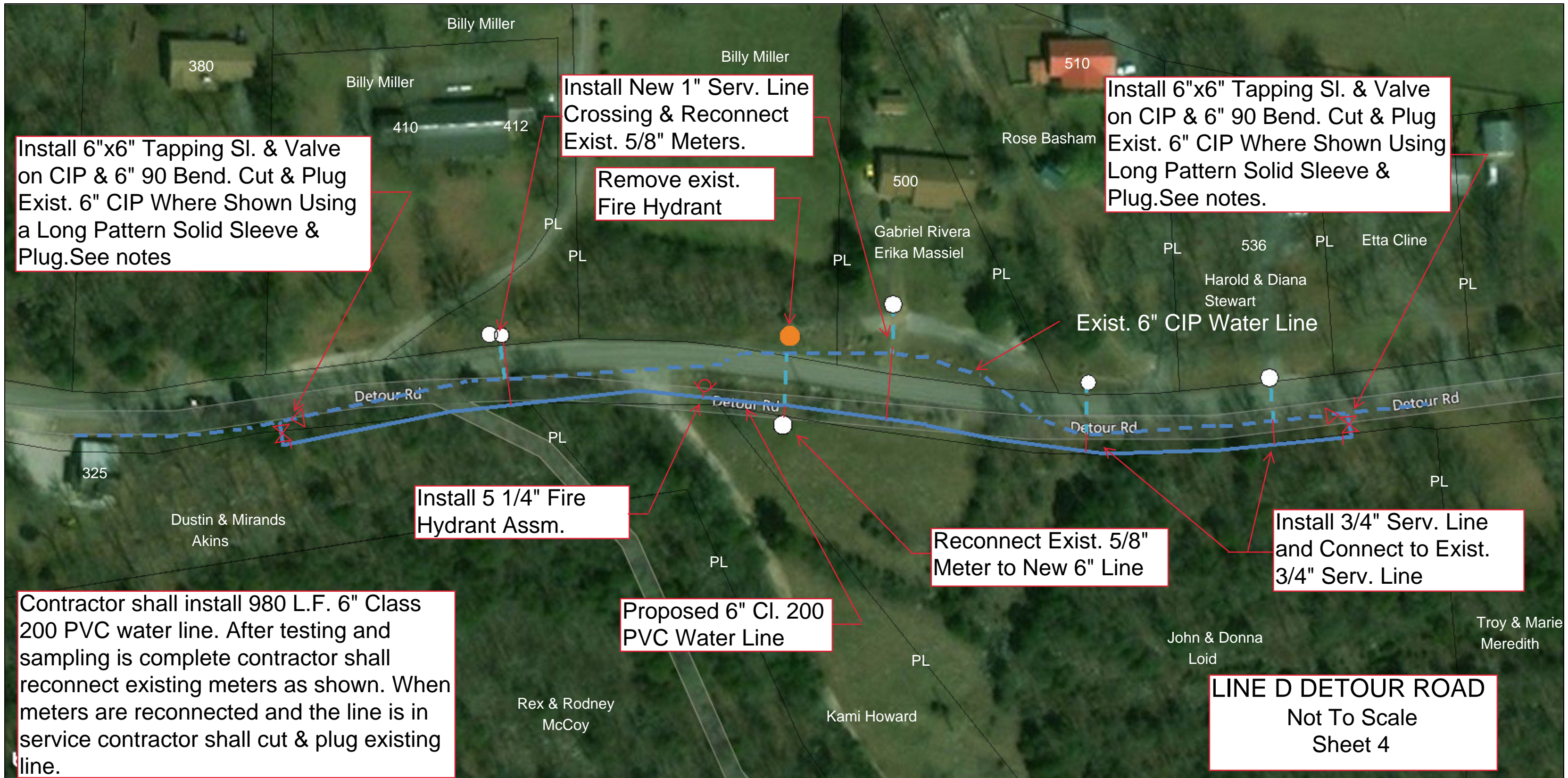
- ssCasingPipe
- ssControlValve**
- Air Release
- Simple Check
- SewerService
- Network Structure
- ssMasterMeter
- SystemValve**



Esri, HERE, DeLorme, MapmyIndia, © OpenStreetMap contributors
Esri, HERE, DeLorme, MapmyIndia, © OpenStreetMap contributors, and the GIS user community
Source: Esri, DigitalGlobe, GeoEye, Earthstar Geographics, CNES/Airbus DS, USDA, USGS, AeroGRID, IGN, and the GIS User Community

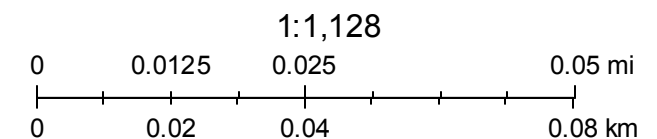


ArcGIS Web Map



December 29, 2017

- █ ssCasingPipe
- ssControlValve**
 - Air Release
 - Simple Check
 - SewerService
 - Network Structure
 - ssMasterMeter
- SystemValve**



© 2017 DigitalGlobe ©CNES (2017) Distribution Airbus DS © 2017 HERE © 2017 Microsoft Corporation

ArcGIS Web Map

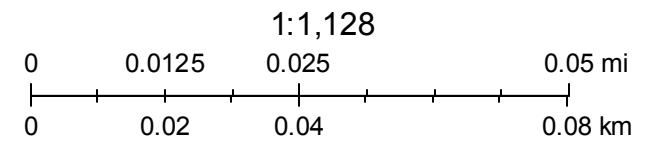


Contractor shall relocate or reconnect existing meters as shown and install new customer service lines on three meters. Contractor shall bore Stone Lane in 2 locations and relocate meters. Contractor shall install Smith Blair 313 service saddle on the 14" DIP water line. After all meters are reconnected contractor shall dig up existing 2" gate valve and plug valve.

LINE E PROCTOR TRAIL & STONE LANE
Not To Scale
Sheet 5

January 17, 2018

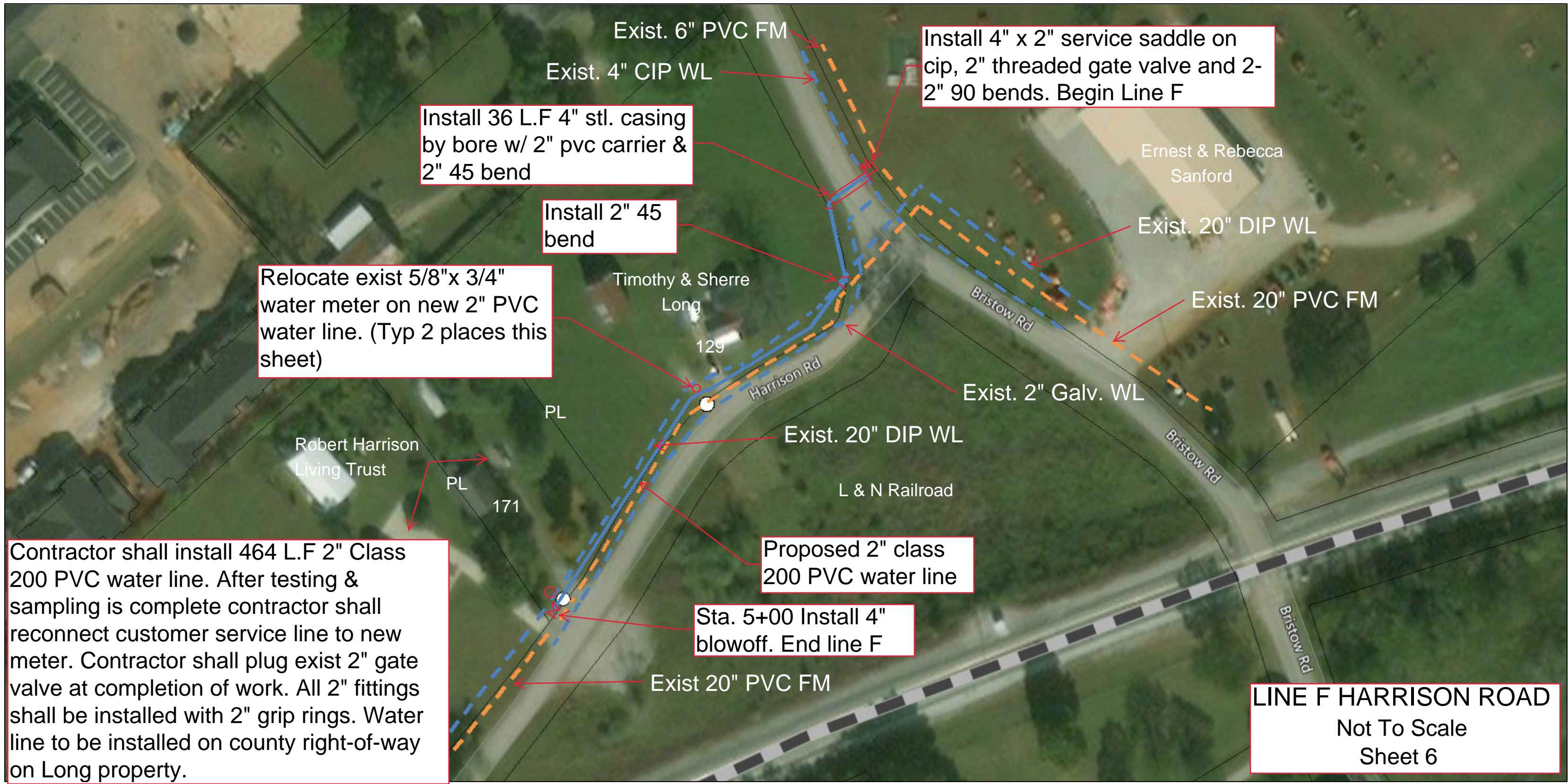
- Tank Service
- Address Points



© 2018 Microsoft Corporation © 2018 DigitalGlobe ©CNES (2018) Distribution Airbus DS © 2018 HERE

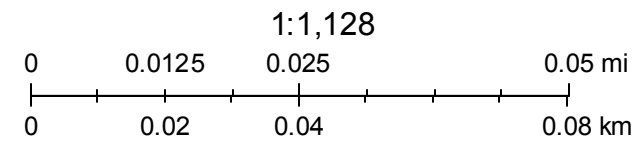


ArcGIS Web Map



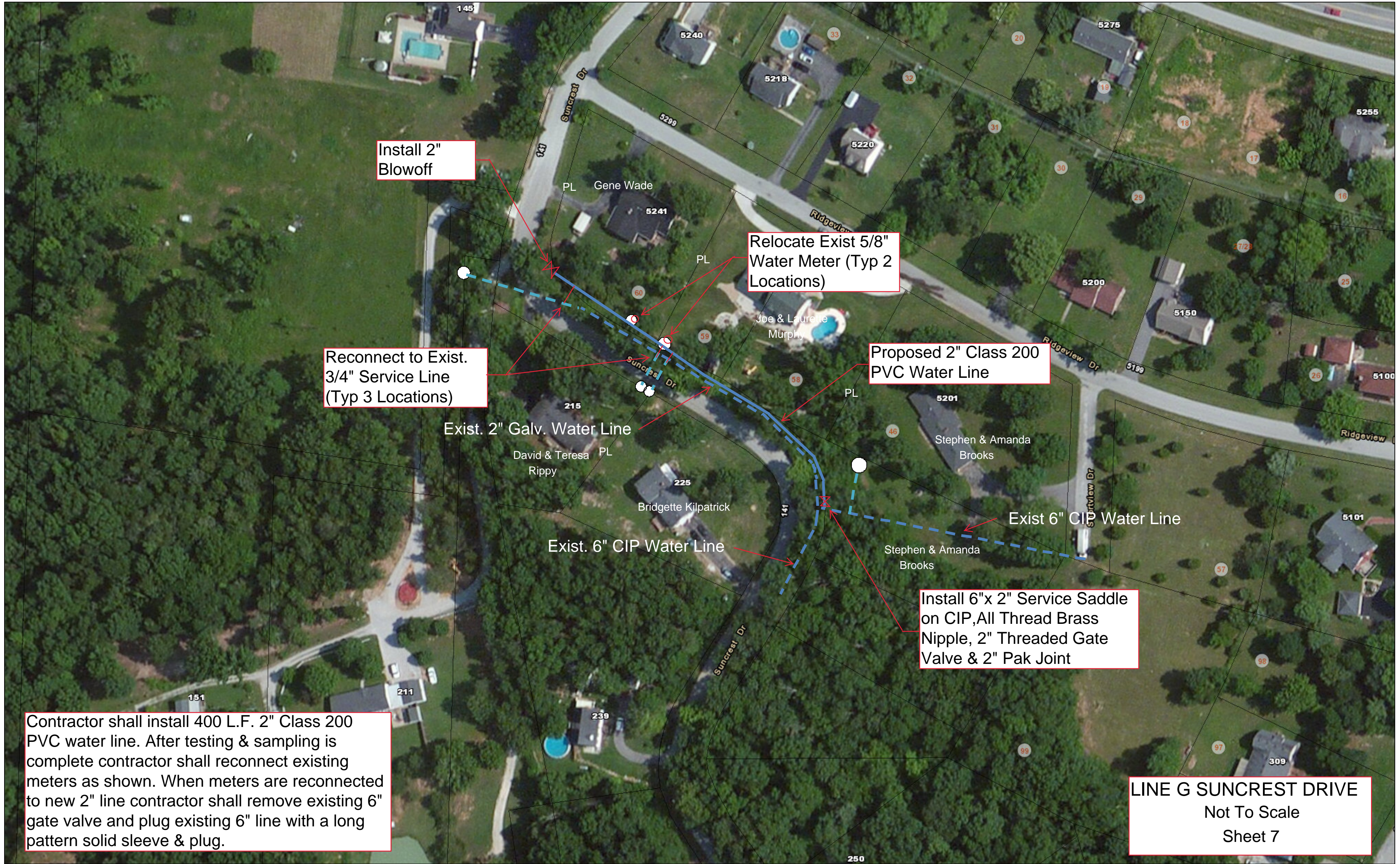
August 24, 2018

- | | | |
|-----------------------------------|-------------------------------------|-------------------------------------|
| BaseMap.DBO.LotNumbers | Leaks 2018 | ☒ Main Line Leak (Line Replaced) |
| BaseMap.DBO.SubdivisionBoundaries | ● Main Line Leak | ● Service Line Leak |
| BaseMap.DBO.SubdivisionParcels | ☒ Main Line Leak (Line Replaced) | ☒ Service Line Leak (Line Replaced) |
| BaseMap.DBO.WarrenPva | ● Service Line Leak | ☐ County Boundaries |
| BaseMap.DBO.SimpsonPVA | ☒ Service Line Leak (Line Replaced) | ≡ SICRA |
| BaseMap.DBO.ButlerPVA | Leaks 2017 | - Tank Service |
| | - Main Line Leak | |



© 2018 Microsoft Corporation © 2018 DigitalGlobe ©CNES (2018) Distribution Airbus DS © 2018 HERE

ArcGIS Web Map



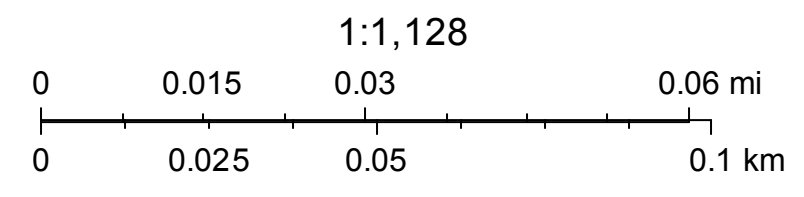
Contractor shall install 400 L.F. 2" Class 200 PVC water line. After testing & sampling is complete contractor shall reconnect existing meters as shown. When meters are reconnected to new 2" line contractor shall remove existing 6" gate valve and plug existing 6" line with a long pattern solid sleeve & plug.

LINE G SUNCREST DRIVE
Not To Scale
Sheet 7

December 29, 2017



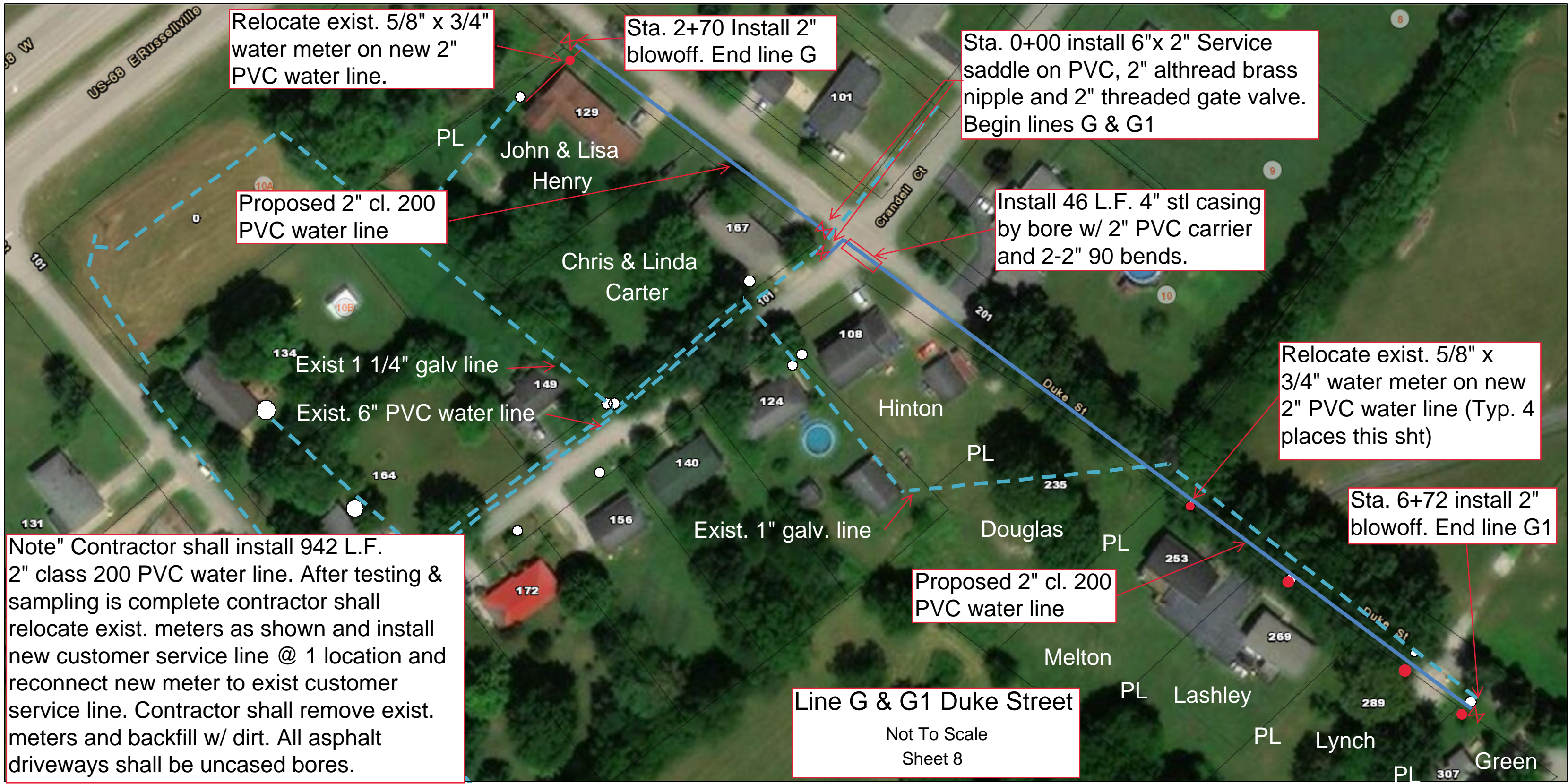
ssCasingPipe	Manhole	Cross	Gravity Main	BaseMap.DBO.ButlerPVA	Service Line Leak	Tank Service
ssControlValve	SanitarySewerFitting	Plug	SewerAsBuiltDrawings	Leaks 2016	Service Line Leak (Line Replaced)	
Air Release	Bend	Reducer	ConstructionLine	Main Line Leak		
Simple Check	Bend 11 1/4	Sleeve	AbandonedLine	Main Line Leak (Line Replaced)		
SewerService	Bend 22 1/2	Tap	BaseMap.DBO.LotNumbers	Service Line Leak	Leaks 2014	
Network Structure	Bend 45	Tee	BaseMap.DBO.SubdivisionBoundaries	Service Line Leak (Line Replaced)	Main Line Leak	
ssMasterMeter	Bend 90	ssPointOnLine	BaseMap.DBO.SubdivisionParcels		Main Line Leak (Line Replaced)	
System Valve	Cap	Force Main	BaseMap.DBO.WarrenPva	Leaks 2015	Service Line Leak	
Gate	Coupling	Lateral	BaseMap.DBO.SimpsonPVA	Main Line Leak	Service Line Leak (Line Replaced)	
				Main Line Leak (Line Replaced)	County Boundaries	
					SICRA	



Esri, HERE, DeLorme, MapmyIndia, © OpenStreetMap contributors, and the GIS user community
Source: Esri, DigitalGlobe, GeoEye, Earthstar Geographics, CNES/Airbus DS, USDA, USGS, AeroGRID, IGN, and the GIS User Community

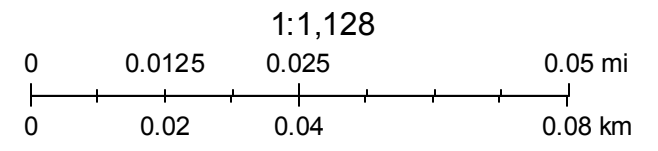
Web AppBuilder for ArcGIS
Esri, HERE, iPC | Esri, HERE, Garmin, iPC | Microsoft |

ArcGIS Web Map



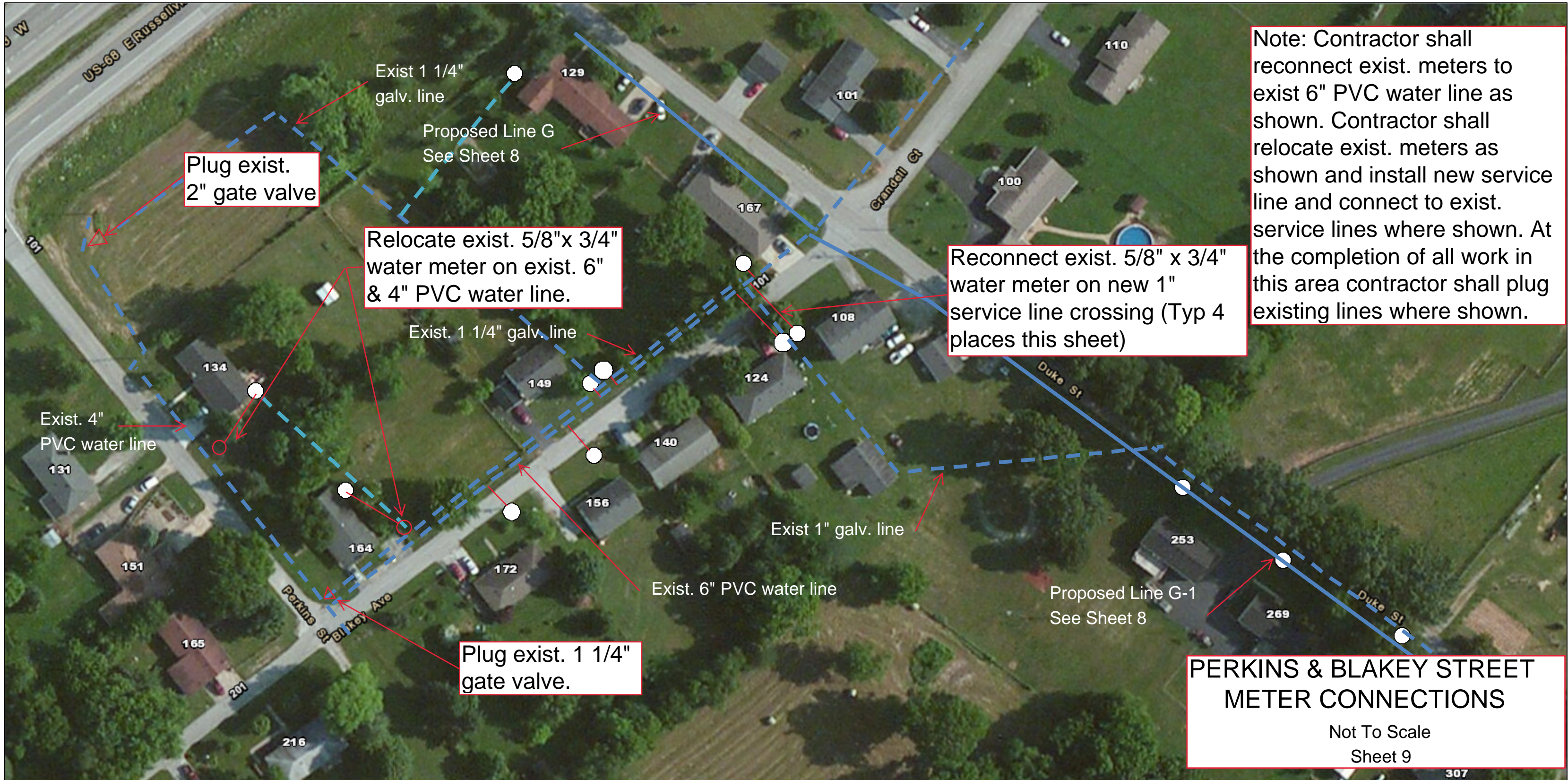
December 12, 2019

- ssCasingPipe
- ssControlValve**
- Air Release
- Simple Check
- SewerService
- Network Structure
- ssMasterMeter
- SystemValve**



Esri, HERE, Garmin, (c) OpenStreetMap contributors
 Esri, HERE, Garmin, (c) OpenStreetMap contributors, and the GIS user community
 Source: Esri, DigitalGlobe, GeoEye, Earthstar Geographics, CNES/Airbus DS, USDA, USGS, AeroGRID, IGN, and the GIS User Community

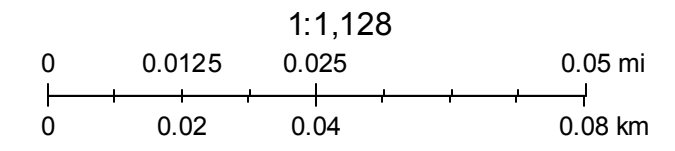
ArcGIS Web Map



**PERKINS & BLAKEY STREET
METER CONNECTIONS**
Not To Scale
Sheet 9

January 4, 2018

ssCasingPipe	ssMasterMeter	Bend 22 1/2	Plug	Force Main	Tank Service
ssControlValve	SystemValve	Bend 45	Reducer	Lateral	
Air Release	Gate	Bend 90	Sleeve	Gravity Main	
Simple Check	Manhole	Cap	Tap	SewerAsBuiltDrawings	
SewerService	SanitarySewerFitting	Coupling	Tee	ConstructionLine	
Network Structure	Bend	Cross	ssPointOnLine	AbandonedLine	
	Bend 11 1/4				

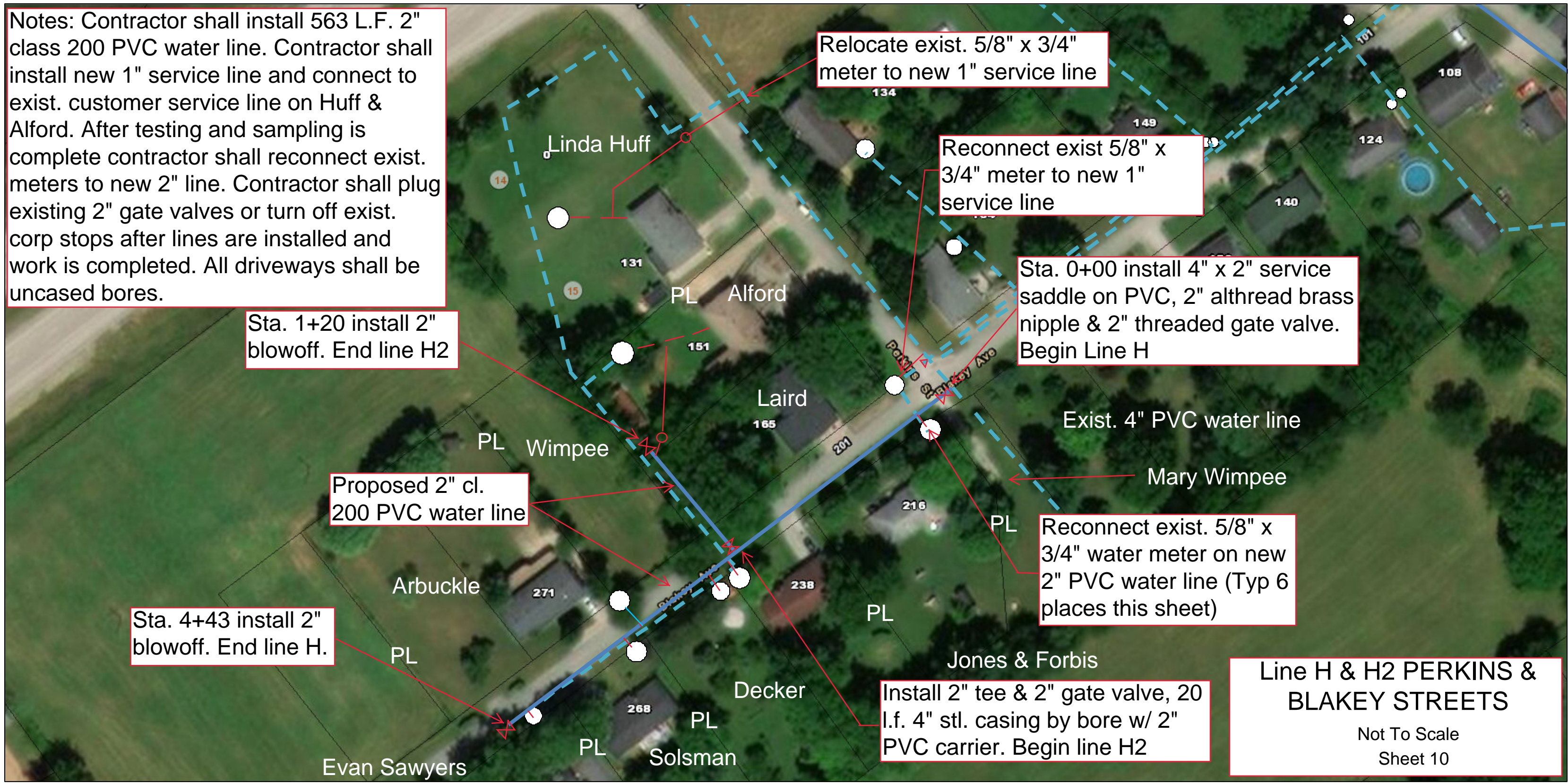


Esri, HERE, DeLorme, MapmyIndia, © OpenStreetMap contributors
Esri, HERE, DeLorme, MapmyIndia, © OpenStreetMap contributors, and the GIS user community
Source: Esri, DigitalGlobe, GeoEye, Earthstar Geographics, CNES/Airbus DS, USDA, USGS, AeroGRID, IGN, and the GIS User Community



ArcGIS Web Map

Notes: Contractor shall install 563 L.F. 2" class 200 PVC water line. Contractor shall install new 1" service line and connect to exist. customer service line on Huff & Alford. After testing and sampling is complete contractor shall reconnect exist. meters to new 2" line. Contractor shall plug existing 2" gate valves or turn off exist. corp stops after lines are installed and work is completed. All driveways shall be uncased bores.



Sta. 1+20 install 2" blowoff. End line H2

Relocate exist. 5/8" x 3/4" meter to new 1" service line

Reconnect exist 5/8" x 3/4" meter to new 1" service line

Sta. 0+00 install 4" x 2" service saddle on PVC, 2" althread brass nipple & 2" threaded gate valve. Begin Line H

Proposed 2" cl. 200 PVC water line

Exist. 4" PVC water line

Reconnect exist. 5/8" x 3/4" water meter on new 2" PVC water line (Typ 6 places this sheet)

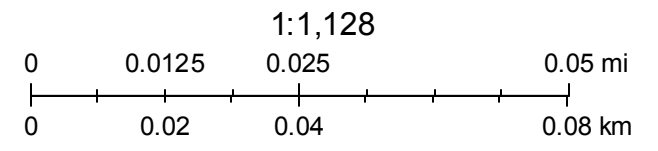
Sta. 4+43 install 2" blowoff. End line H.

Install 2" tee & 2" gate valve, 20 l.f. 4" stl. casing by bore w/ 2" PVC carrier. Begin line H2

Line H & H2 PERKINS & BLAKEY STREETS
Not To Scale
Sheet 10

December 12, 2019

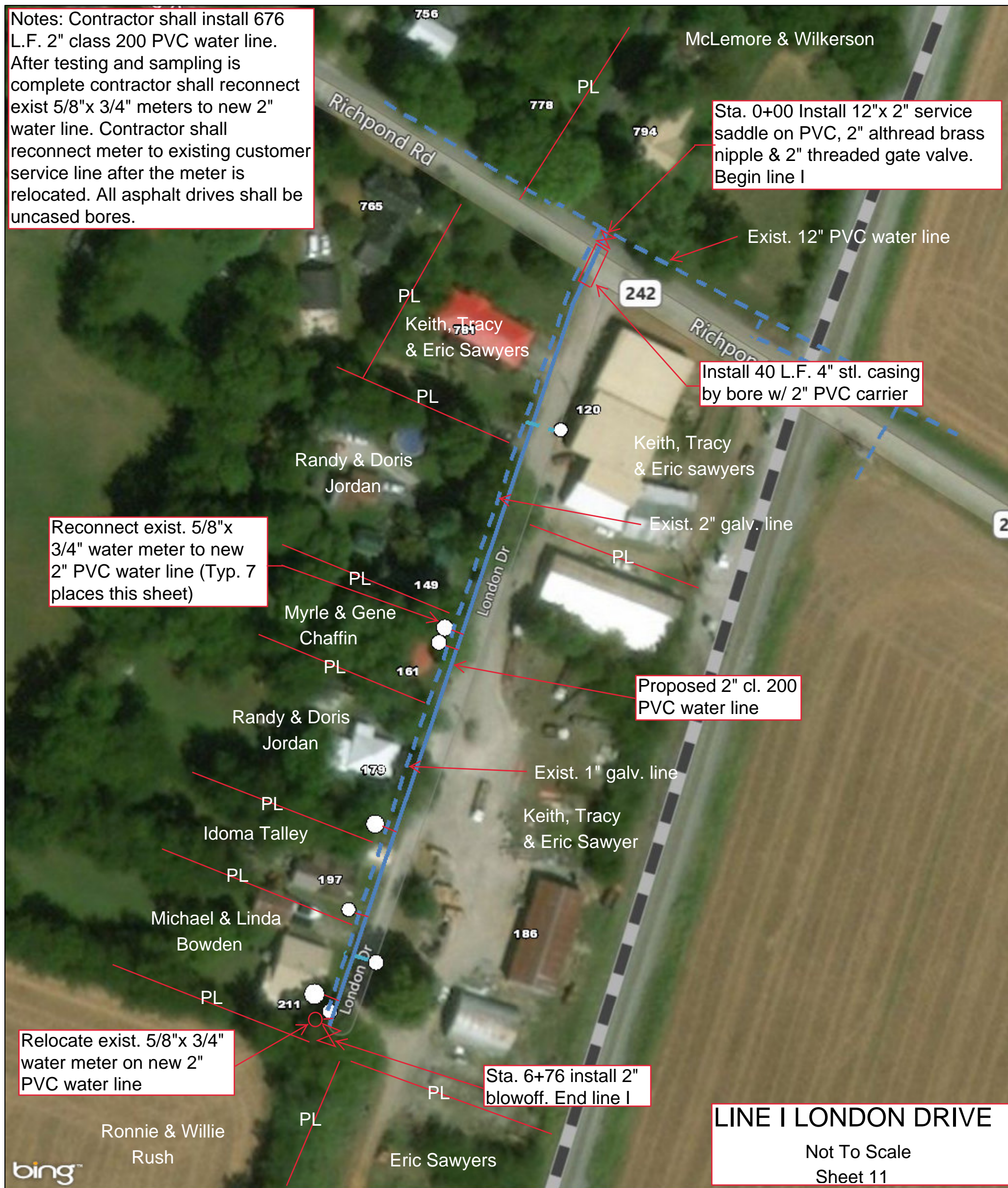
- ssCasingPipe
- ssControlValve**
 - Air Release
 - Simple Check
 - SewerService
 - Network Structure
 - ssMasterMeter
- SystemValve**



Esri, HERE, Garmin, (c) OpenStreetMap contributors
Esri, HERE, Garmin, (c) OpenStreetMap contributors, and the GIS user community
Source: Esri, DigitalGlobe, GeoEye, Earthstar Geographics, CNES/Airbus DS, USDA, USGS, AeroGRID, IGN, and the GIS User Community

ArcGIS Web Map

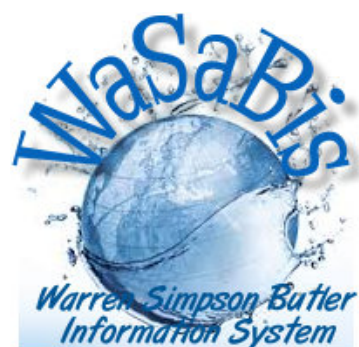
Notes: Contractor shall install 676 L.F. 2" class 200 PVC water line. After testing and sampling is complete contractor shall reconnect exist 5/8"x 3/4" meters to new 2" water line. Contractor shall reconnect meter to existing customer service line after the meter is relocated. All asphalt drives shall be uncased bores.



December 29, 2017

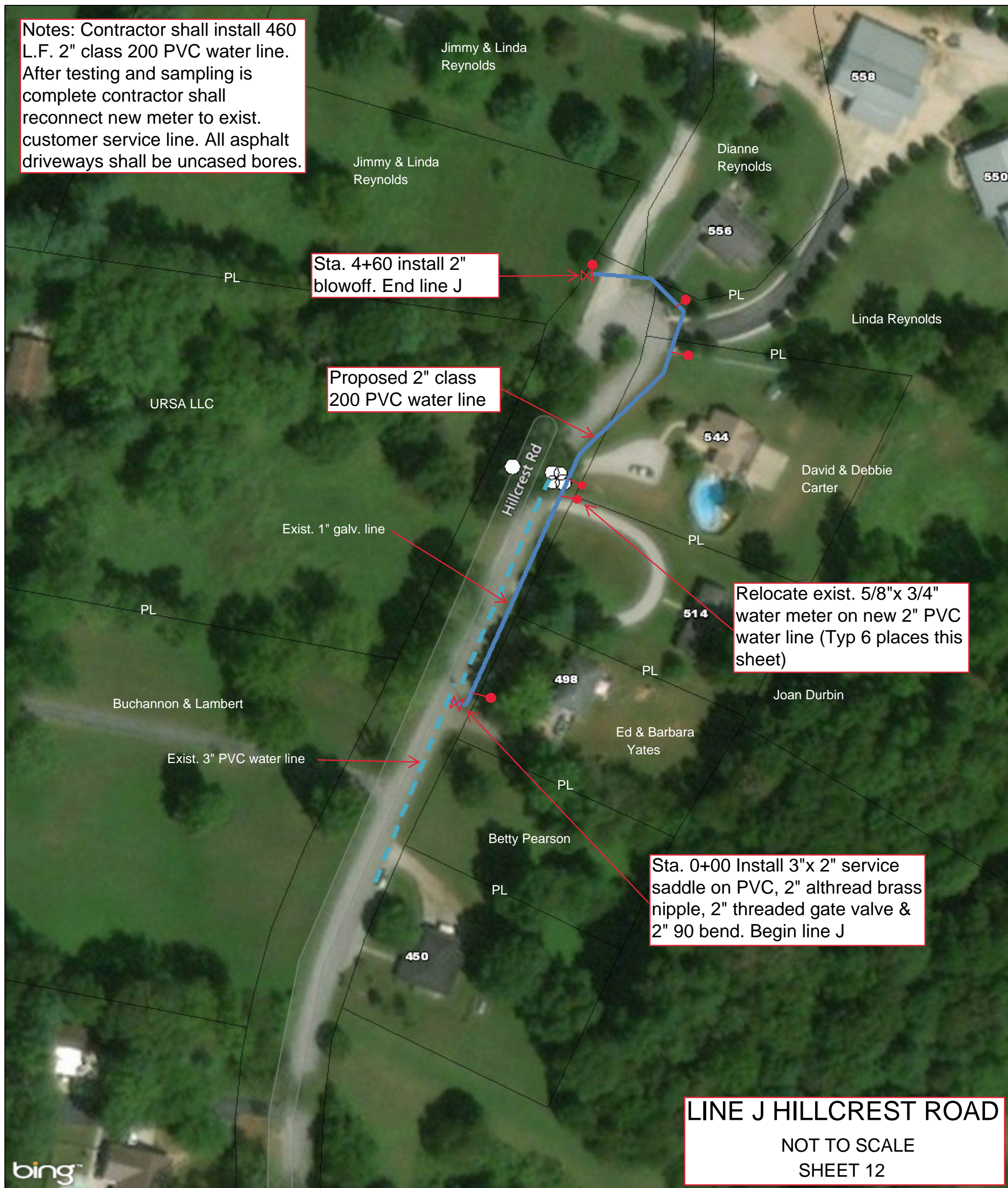
ssCasingPipe	Manhole	Cross	Gravity Main
ssControlValve	SanitarySewerFitting	Plug	SewerAsBuiltDrawings
Air Release	Bend	Reducer	ConstructionLine
Simple Check	Bend 11 1/4	Sleeve	AbandonedLine
SewerService	Bend 22 1/2	Tap	Tank Service
Network Structure	Bend 45	Tee	Address Points
ssMasterMeter	Bend 90	ssPointOnLine	
SystemValve	Cap	Force Main	
Gate	Coupling	Lateral	

© 2017 DigitalGlobe ©CNES (2017) Distribution Airbus DS © 2017 HERE © 2017 Microsoft Corporation



ArcGIS Web Map

Notes: Contractor shall install 460 L.F. 2" class 200 PVC water line. After testing and sampling is complete contractor shall reconnect new meter to exist. customer service line. All asphalt driveways shall be uncased bores.



LINE J HILLCREST ROAD
NOT TO SCALE
SHEET 12

December 24, 2019

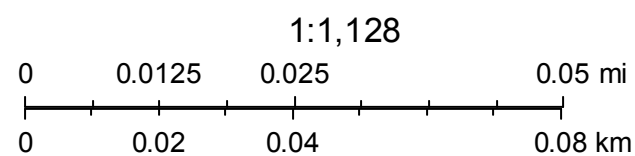
- ssCasingPipe
- ssControlValve**
 - Air Release
 - + Simple Check
 - ⊠ SewerService
 - ⊠ Network Structure
 - ⊠ ssMasterMeter

- SystemValve**
 - ⊠ Gate
 - ⊠ Manhole

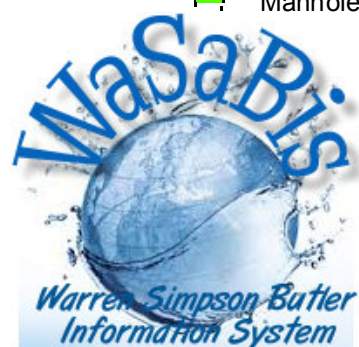
fitting

1/4

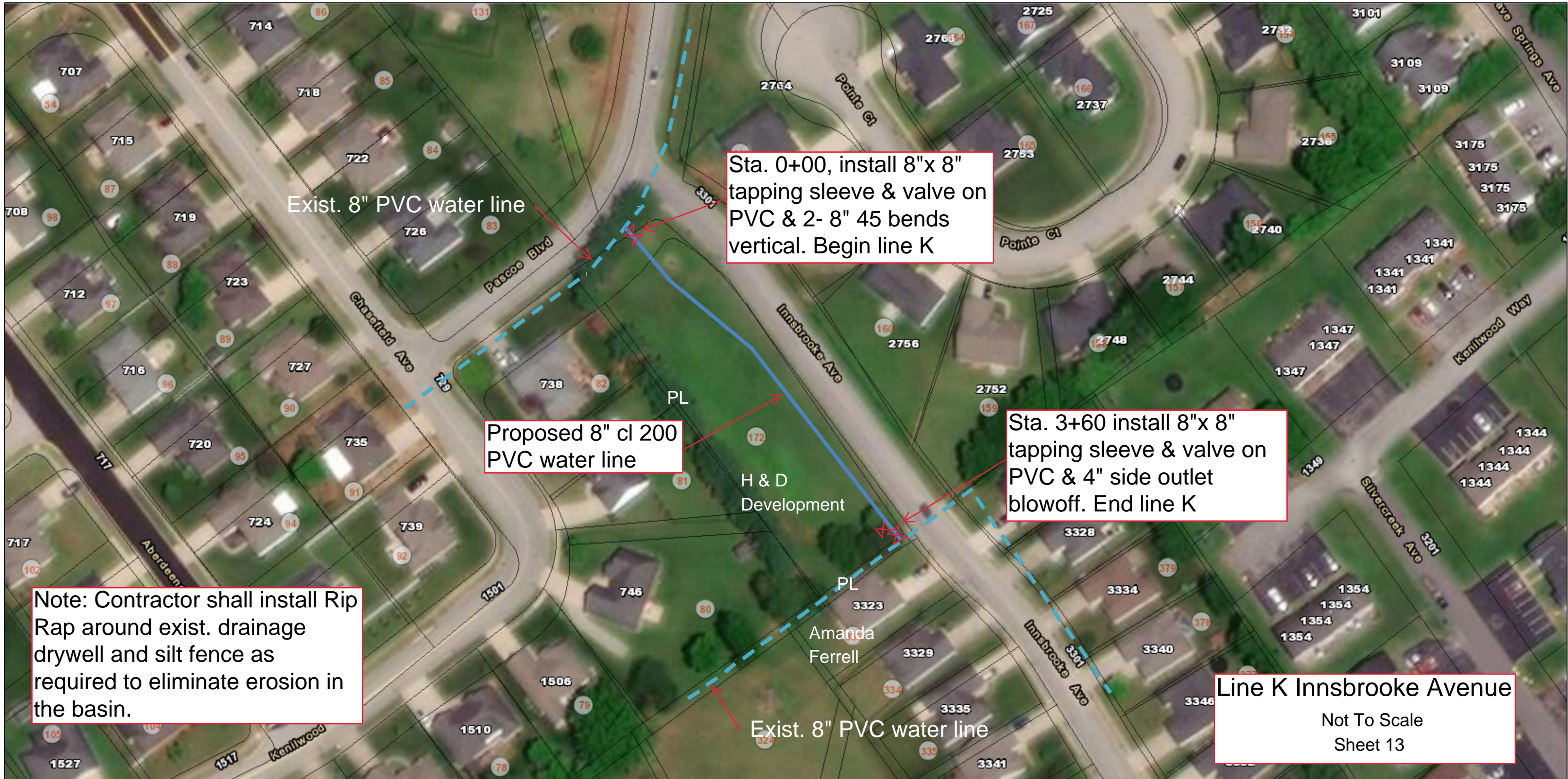
1/2



© 2019 Microsoft Corporation © 2019 DigitalGlobe ©CNES (2019) Distribution Airbus DS © 2019 HERE



ArcGIS Web Map



Sta. 0+00, install 8"x 8" tapping sleeve & valve on PVC & 2- 8" 45 bends vertical. Begin line K

Proposed 8" cl 200 PVC water line

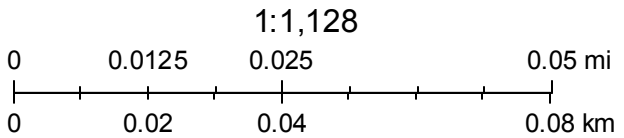
Sta. 3+60 install 8"x 8" tapping sleeve & valve on PVC & 4" side outlet blowoff. End line K

Note: Contractor shall install Rip Rap around exist. drainage drywell and silt fence as required to eliminate erosion in the basin.

Line K Innsbrooke Avenue
Not To Scale
Sheet 13

December 15, 2019

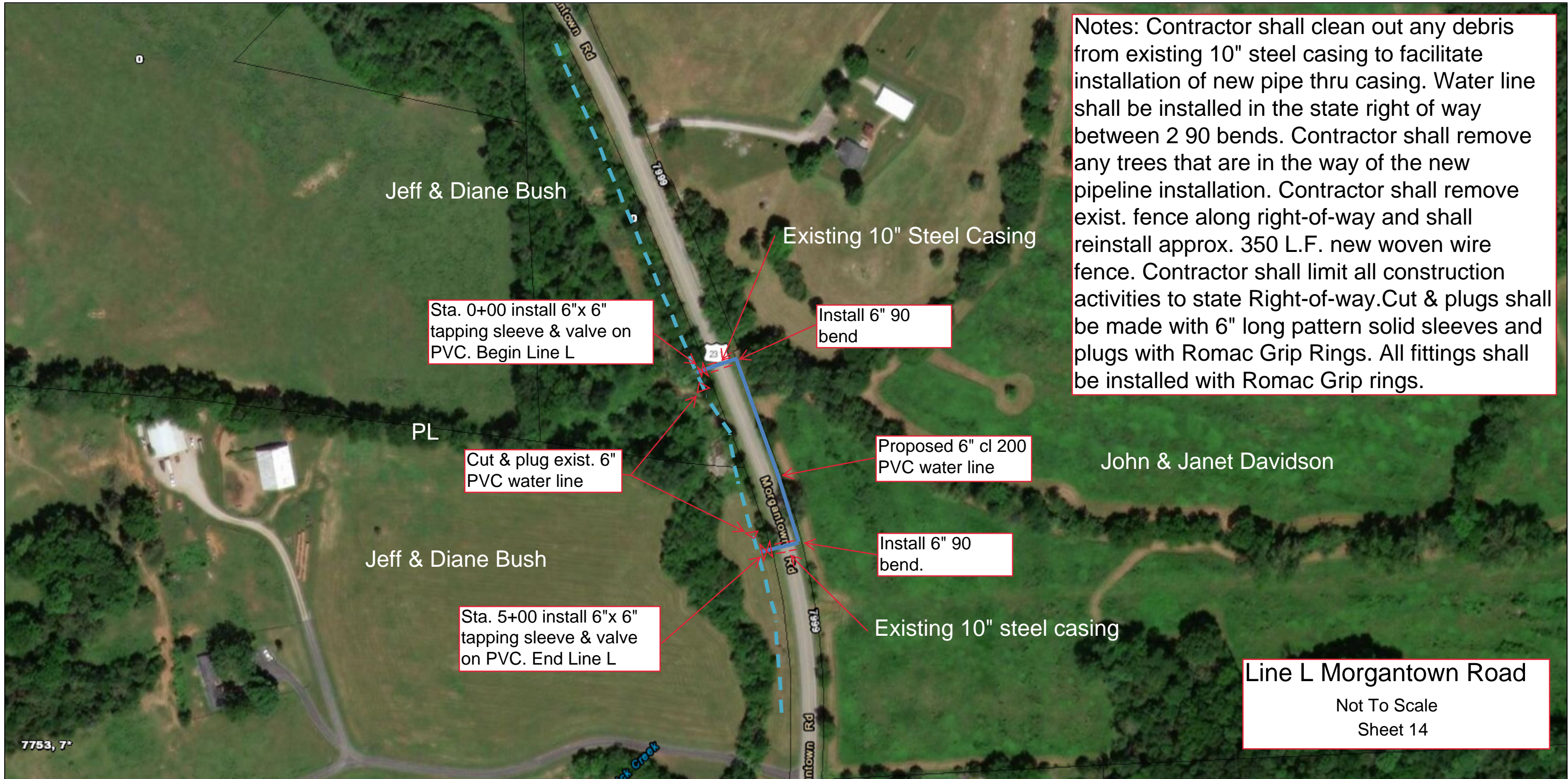
- ssCasingPipe
- ssControlValve**
 - Air Release
 - Simple Check
 - SewerService
 - Network Structure
 - ssMasterMeter
- SystemValve**



Esri, HERE, Garmin, (c) OpenStreetMap contributors
Esri, HERE, Garmin, (c) OpenStreetMap contributors, and the GIS user community
Source: Esri, DigitalGlobe, GeoEye, Earthstar Geographics, CNES/Airbus DS, USDA, USGS, AeroGRID, IGN, and the GIS User Community



ArcGIS Web Map

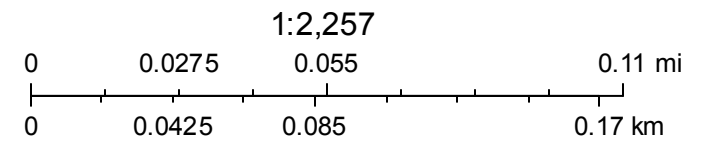


Notes: Contractor shall clean out any debris from existing 10" steel casing to facilitate installation of new pipe thru casing. Water line shall be installed in the state right of way between 2 90 bends. Contractor shall remove any trees that are in the way of the new pipeline installation. Contractor shall remove exist. fence along right-of-way and shall reinstall approx. 350 L.F. new woven wire fence. Contractor shall limit all construction activities to state Right-of-way. Cut & plugs shall be made with 6" long pattern solid sleeves and plugs with Romac Grip Rings. All fittings shall be installed with Romac Grip rings.

Line L Morgantown Road
 Not To Scale
 Sheet 14

December 15, 2019

- ssCasingPipe
- ssControlValve**
 - Air Release
 - Simple Check
 - SewerService
 - Network Structure
 - ssMasterMeter
- SystemValve**



Esri, HERE, Garmin, (c) OpenStreetMap contributors
 Esri, HERE, Garmin, (c) OpenStreetMap contributors, and the GIS user community
 Source: Esri, DigitalGlobe, GeoEye, Earthstar Geographics, CNES/Airbus DS, USDA, USGS, AeroGRID, IGN, and the GIS User Community