

**COMMONWEALTH OF KENTUCKY
BEFORE THE KENTUCKY STATE BOARD
ON ELECTRIC GENERATION AND TRANSMISSION SITING**

**In the Matter of the Application of Glover Creek Solar,)
LLC, for a Construction Certificate to Construct a) Case No. 2020-00043
Merchant Electric Generating Facility)**

NOTICE OF FILING

Glover Creek Solar, LLC) (“Glover Creek”), by counsel, hereby provides notice that it is filing its final site layout plan.

In its Order dated September 23, 2020, the Siting Board required Glover Creek to comply with the following mitigation measure: “a final site layout plan shall be submitted to the Siting Board. Material deviations from the preliminary site layout plan which formed the basis for the instant review shall be clearly indicated on the revised graphic.” In compliance with this Order, Glover Creek is filing its final site layout plan, which is attached hereto as Exhibit 1. A comparison of the final plan and the site layout plan that was submitted with the Motion To Amend Project Boundaries and attached hereto as Exhibit 2 reveals that there are no material deviations. Glover Creek further confirms that there is no change in Glover Creek’s boundaries from the information that formed the basis of the Siting Board’s decision on October 1, 2021, approving the amended project boundaries.

Respectfully submitted,

/s/ M. Todd Osterloh

STURGILL, TURNER, BARKER & MOLONEY, PLLC

JAMES W. GARDNER

M. TODD OSTERLOH

333 W. Vine Street, Suite 1500

Lexington, Kentucky 40507

Telephone No. (859) 255-8581

Fax No. (859) 231-0851

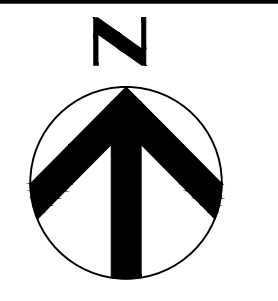
tosterloh@sturgillturner.com

jgardner@sturgillturner.com

ATTORNEYS FOR GLOVER CREEK SOLAR, LLC

x:\wdox\clients\66432\0001\pleading\01673128.docx

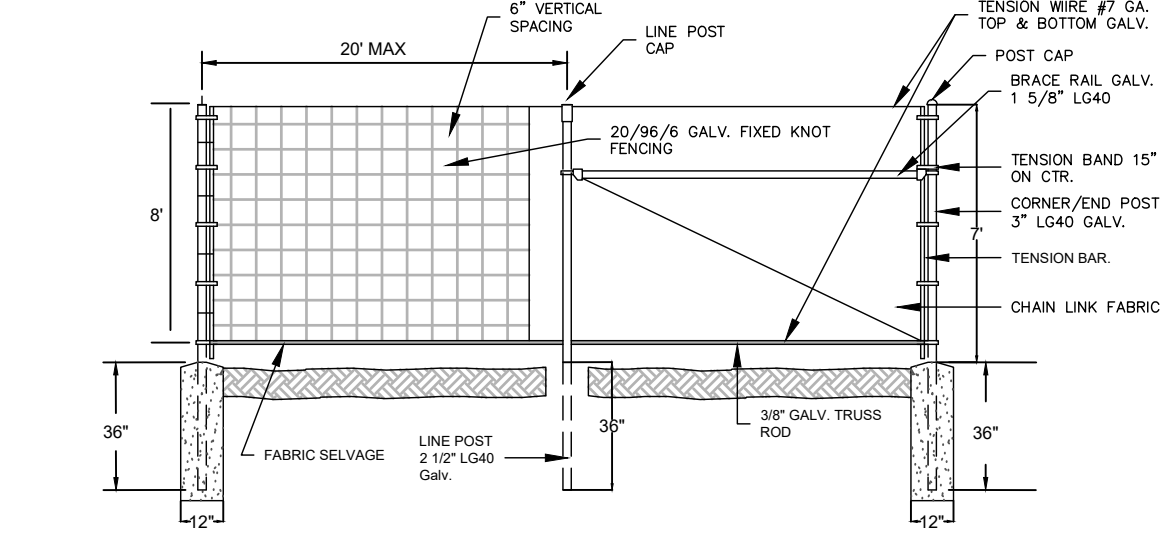
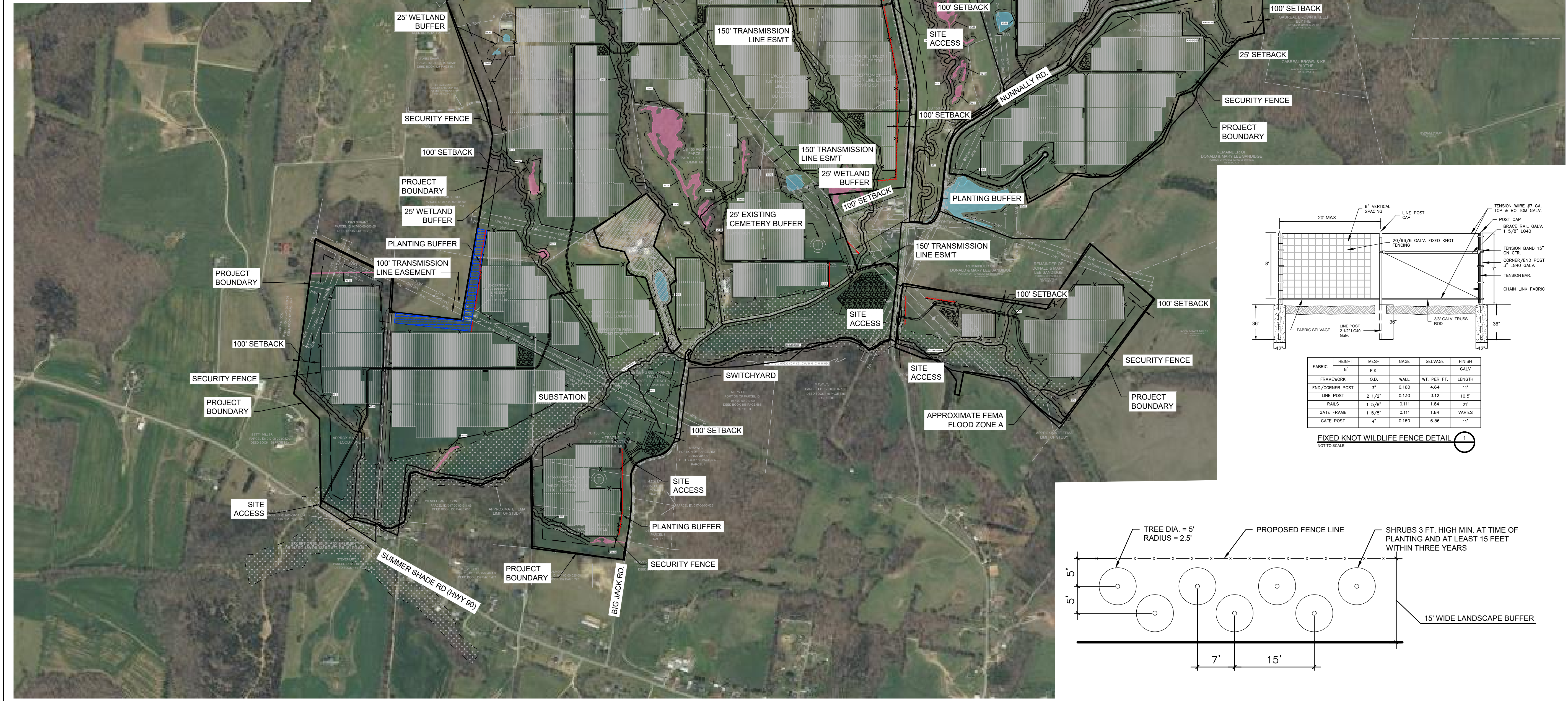
Exhibit 1



UTILITY/CIVIL LINE SYMBOLOGY

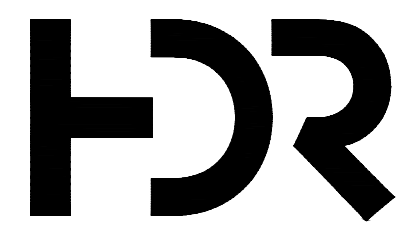
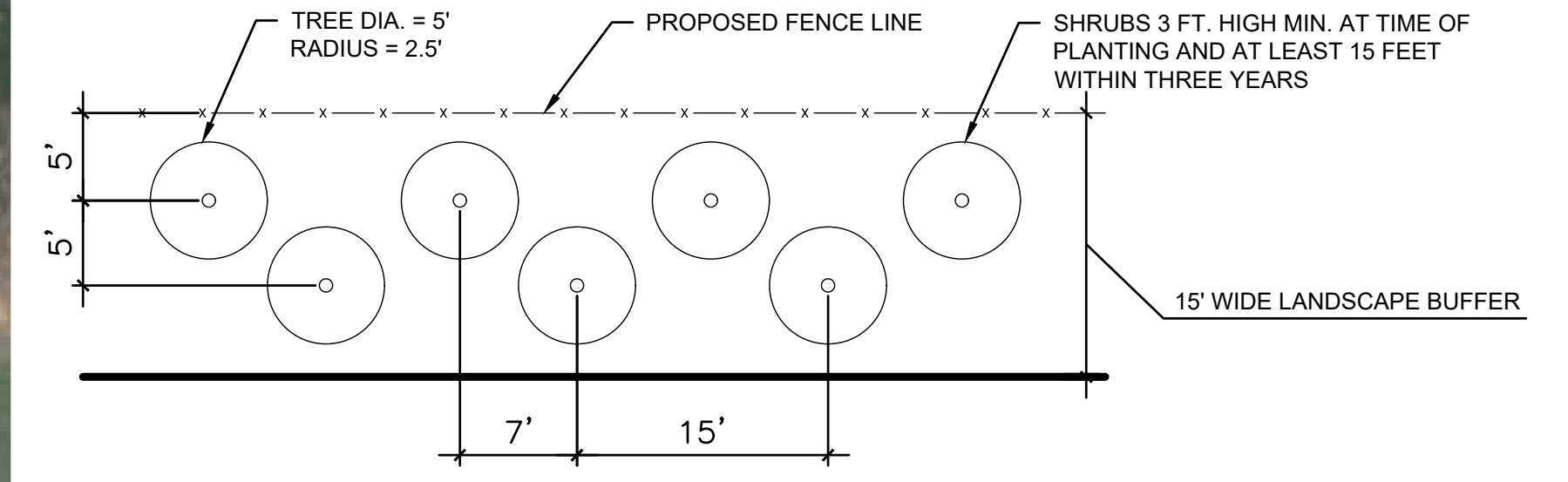
- LAYDOWN AREA
- DITCH/STREAM
- PLANTING BUFFER
- POLLINATOR PLANTINGS
- FIELD DELINEATED WETLAND
- FEMA FLOOD ZONE A
- EXCLUSION AREA
- JURISDICTIONAL WETLANDS
- ISOLATED WETLANDS

SYSTEM SUMMARY	
MODULE	(141,723) ADANI SOLAR ASB-M10-144-540
INVERTER	(71) 840 KWDC TMEIC SOLAR WARE NINJA PVU-L0840GR
TRANSFORMERS	(7) 5040 KVA, 630V-34.5KV (3) 4200 KVA, 630V-34.5KV (2) 3360 KVA, 630V-34.5KV (2) 2520 KVA, 630V-34.5KV
RACKING	GAMECHANGE GENIUS
AZIMUTH	180°
MAX ROTATION ANGLE OR TILT	±52° ONE AXIS HORIZONTAL
GROUND COVER RATIO	40.00%
CLEAR ROW SPACING	18.5'
QTY STRINGS	5,249 STRINGS (27 MODS/STRING)
DC CAPACITY	76.53 MWDC
AC CAPACITY	55 MWAC @POI
LOADING RATIO DC/AC	1.39 @POI
INTERCONNECTION UTILITY	EASTERN KENTUCKY POWER COOPERATIVE (69 KV)
SITE LOCATION	36.895695°, -85.714148°



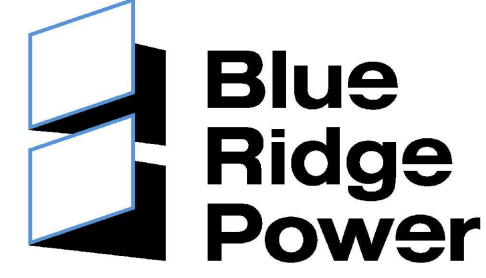
FABRIC	HEIGHT	MESH	GAGE	SELVAGE	FINISH
FRAMEWORK	8'	F.K.			GALV
END/CORNER POST	3"	O.D.	WALL	WT. PER FT.	LENGTH
LINE POST	2 1/2"	0.130	3.12	10.5'	
RAILS	1 5/8"	0.111	1.84	20"	
GATE FRAME	1 5/8"	0.111	1.84	VARIES	
GATE POST	4"	0.160	6.56	11"	

FIXED KNOT WILDLIFE FENCE DETAIL
NOT TO SCALE



REV	DATE	DESCRIPTION
6/2/2022	ZONING	
5/26/2022	IFP	
3/25/2022	IFP	

PROJECT MANAGER	COREY SCHMITT, P.E.
DESIGNED BY	J. DUCKWORTH, P.E.
DRAWN BY	K. REYNOLDS
CHECKED BY	M. BRAWLEY, P.E.
PROJECT NUMBER	10334011



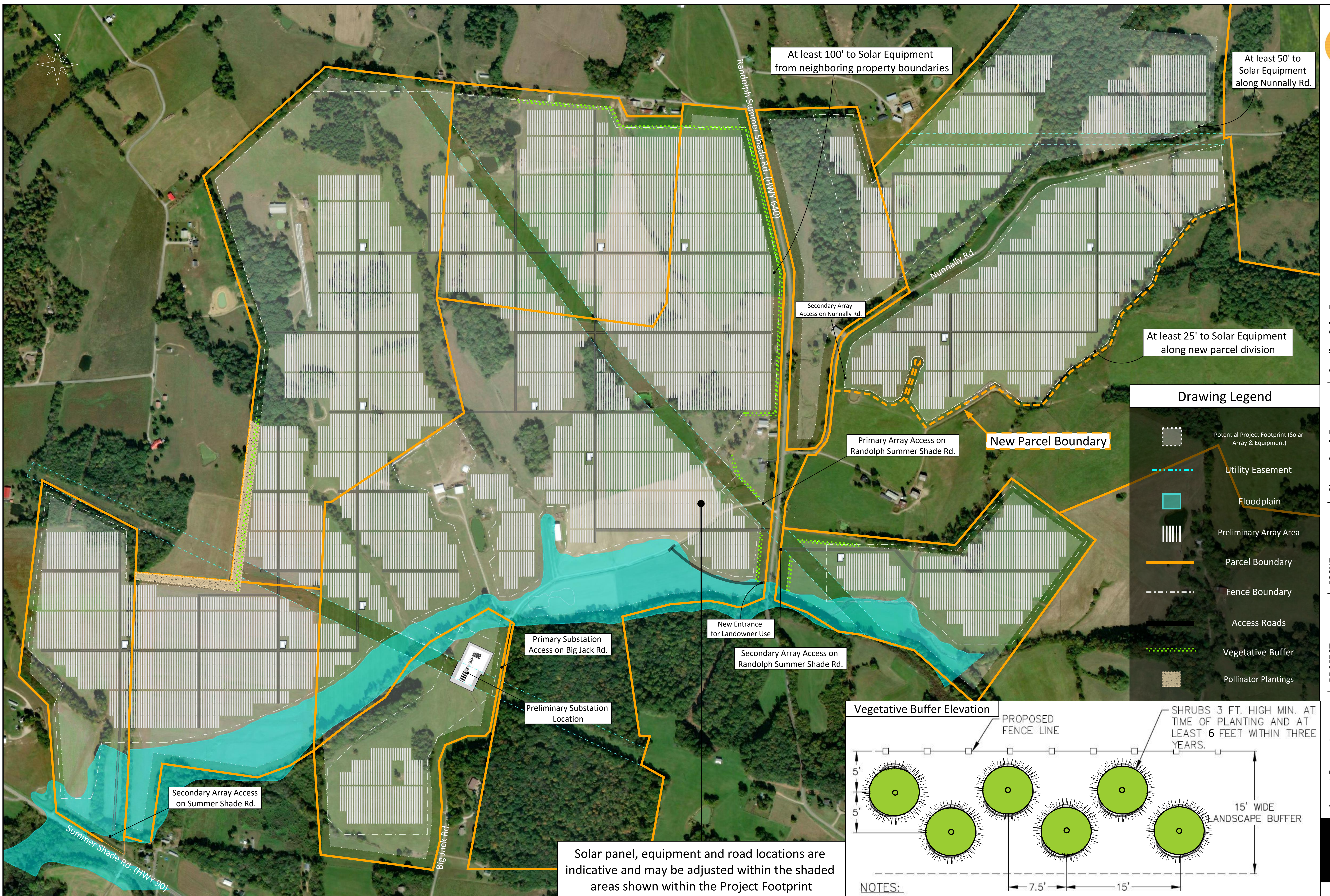
**BLUE RIDGE POWER (BRP)
GLOVER CREEK SOLAR**

ZONING PLAN

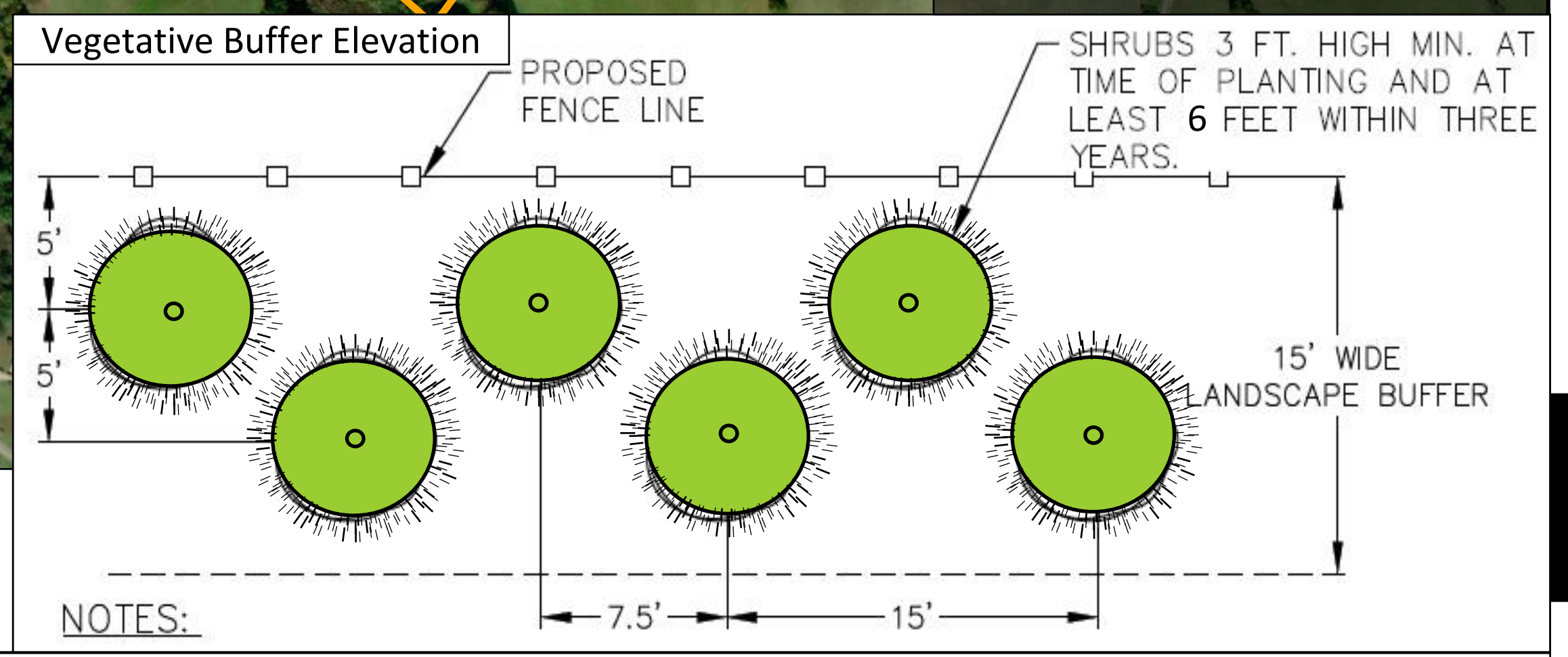
FILENAME | Z101.DWG
SCALE | 1:500

SHEET
Z101

Exhibit 2



Drawing Legend	
	Potential Project Footprint (Solar Array & Equipment)
	Utility Easement
	Floodplain
	Preliminary Array Area
	Parcel Boundary
	Fence Boundary
	Access Roads
	Vegetative Buffer
	Pollinator Plantings



Solar panel, equipment and road locations are indicative and may be adjusted within the shaded areas shown within the Project Footprint